

# CELEBRATING 50 YEARS OF STUDENT SUCCESS



2013-2014 Annual Report to the Community

SAN DIEGO MESA COLLEGE



# Contents

A Look Back: The 1960s - 2010s	4-9
2014 in Review	10
Leadership on the Mesa	11
A Walk Through Time	12, 13
Our Time, Our Future	14
Vision, Mission and Values; Strategic Directions	15
New Funding Sources Support Underrepresented Students	16
Equity Matters	17
Graduating to a Four-year Degree	18
Wave of Talent Infuses New Energy	19
Models for Student Success	20
The San Diego Mesa College Foundation	21
Mesa at a Glance	22
Mesa College 2013-2014 Actual Expenses	23

## From the President



As we celebrate our 50th anniversary this year, it is an opportunity to look back at the college's accomplishments and how far we have traveled. Since 1964, San Diego Mesa College has awarded degrees and certificates to nearly 50,000 individuals and has developed and delivered programs to meet the demands of our local community.

Today, I am proud to say that Mesa College offers more than 195 degree, diploma and industry-recognized certifications to meet workforce needs. Annually, the college serves more than 25,000 individuals through online and classroom programs situated on a 104-acre college in the geographic heart of San Diego.

You only need to look at our roster of alumni: successful actors, business owners, educators, politicians, and yes, teachers, to see our contributions to the world.

This is a special time. Our future is filled with promise, built upon the legacy of those that have come before us.

We have survived the great recession. We are in a period of growth, energized by the 27 new faculty we welcomed this year, and the expanse of knowledge of our tenured faculty and support staff. We now work and teach in a campus that has been transformed into state-of-the art learning environment – on par with many universities – thanks to the voters of San Diego.

We are, if I may dare say, come to a point in time that is our time. We now have the opportunity to define our contributions to higher education for the next five, 10... and yes, 50 years. Our time together on the Mesa will define our legacy.

Pamela T. Luster, Ed.D., President

*(Excerpted from comments made at Fall 2014 Convocation.)*

WE ARE *Mesa*



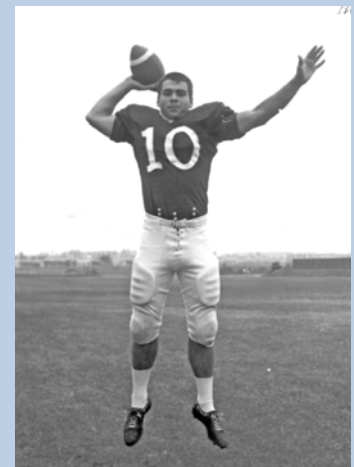
# 1960s

The year was 1964. You could be one of the first to buy a Ford Mustang for \$3,400, and pay 30 cents a gallon to fill it up. President Lyndon Johnson declares a “War on Poverty,” and Sea World opens on the shores of Mission Bay. “I Want to Hold Your Hand” tops the charts.

On Feb. 5, San Diego Mesa College opened its doors to 1,400 students enrolled at the college but taking classes at Kearny High School. Within months, enrollment swelled to 1,900 students – the largest number ever enrolled for the opening semester of a California junior college.

During this tumultuous decade, marked by the war in Vietnam, and the assassinations of President John F. Kennedy, Robert Kennedy and Dr. Martin Luther King, Jr., two major social movements – civil rights and women’s rights – helped to promote education as the means to eliminate prejudice and poverty.

One of the first students to enroll at Mesa College was 17-year old Gracie Gray (pictured at left). Active in student life, Gracie was involved in student government and was one of the founders of the Associated Women Students. Today, Grace Gray-Adams is an accomplished artist; she also teaches multi-media classes at Mesa College.



- 1960 – A \$5,725,000 bond issue approves the construction of a junior college on a 104-acre site in the geographic heart of San Diego.
- 1965 – Congress passes the Higher Education Act, which essentially guarantees federal support to any student who can show financial need.

- 1966 – The Olympian football team wins its first Conference title; with repeat wins in 1967, 1969, 1978, 1979, 1981 and 2008.
- 1969 – A primitive People’s Park was hastily constructed on the mesa, modeled after the original park at UC Berkeley.



# 1970s

Campus unrest triggered by the Vietnam War lingered on colleges and universities well into the '70s. At least twice weekly, Mesa College faculty and students took to a newly constructed free-speech stage to express opinions and debate social issues.

But unlike many institutions of higher learning, the student protests at Mesa were peaceful.

Enrollment rose. New buildings opened and new programs were offered: Animal Health Technology, Physical Therapist Assistant, and Medical Records Technology. New classrooms, including the music addition, opens. The Olympic Singers win a Gold Medal at the Hawaiian Music Festival.

In 1979, Artists Guillermo-Chavez Rosette and Ramses Noriega joined M.E.Ch.A. students to paint one of three Chicano murals on the Mesa.



- 1973 – The Independent Learning Center begins operations. That same year, Artillery Drive is officially renamed Mesa College Drive.
- 1976 – Enrollment rises to 10,000. The I-300 Building was constructed. The college opened lighted tennis courts, the Child

Development Center, music classrooms and offices.

- 1976 – Actress Jane Fonda stumps on campus for her then husband, state legislature candidate Tom Hayden.

- 1976 – Arnie Robinson, Mesa grad and future Track Coach (1982-2009), takes gold at the 1976 Olympic Games. From 1976-78, he was the top-ranking long jumper in the world. In 2012, Arnie received the Mesa College Distinguished Alumni Award.



# 1980s

In 1980, San Diego County's five community college districts signed a "free flow" agreement eliminating the need for students to get inter-district permits to attend classes outside their district of residency. Now, a specialized academic program could be offered exclusively at one community college, drawing students from throughout the county.

Campus events and student activities reflected the growing diversity of Mesa students. The Festival of Colors, a signature annual celebration of world cultures, debuted in 1983. A year later, the college offered its first Study Abroad classes in Spain, and the Humanities Awareness Month and awards began. The first went to actor Cliff Robertson for his contributions to arts and culture. Subsequent recipients include Steve Allen, Jayne Meadows and Mesa alumnae Annette Bening.



- 1980 – The first Disability Awareness Week highlights the abilities and special needs of disabled students.
- 1986 – Mr. Charles M. Robertson makes a significant gift of African art valued (then) at \$70,000 to Mesa College.

- 1986 – The Mesa Choir performs at the World EXPO in Vancouver, Canada, with a repeat visit to the 1988 EXPO in Australia. The baseball team wins its first conference title.
- 1988 – The Transfer Admission Guarantee (TAG) program is created between Mesa and UCSD.



# 1990s

The fast-track '90s was marked by a rapid success of achievements at Mesa College that many have regarded as "taking the college to the next level."

Dr. Constance M. Carroll was named president on Feb. 1, 1993. Under her leadership, the administration was reorganized and shared governance was established. New instructional programs were created, including biotechnology, geographic information systems, Microsoft Certification and CBTE Open Entry/Open Exit.

In 1998, the \$20 million Learning Resource Center opened and was dubbed as the "campus crown jewel." Four years of construction – and 1,550 truckloads of concrete – created a library that "rivals any in town" and a state-of-the art Center for Independent Learning that drew students from two- and four-year colleges throughout the region.



- 1990 – Tibetan monks from Dharmasala, India, create a showcase sand mandala – from one grain of sand at a time – in the LRC atrium.
- 1990 – San Diego Mesa College Humanities Institute opens as a regional center for the California Humanities Project.
- 1992 – Rosa Parks visits Mesa College on her 79th birthday, Feb. 4, with repeat visits in 1993 and 1995. In 1993, the college is named the Mexico-San Diego branch of the Rosa Parks Institute for Human Rights and Self Development.
- 1997 – The Mesa campus community builds a Habitat to Humanity home in City Heights for a student.
- 1998 – More than \$60,000 is raised by the campus community for student scholarships.
- 1998 – The family photo history project "Faces of San Diego" debuts. On the eve of the new millennium, a county-wide version of the project launches on board the historical Star of India. The project then goes national. (Photo below)





# 2000s

The '00s decade was defined by 9-11, the growth of the internet, environmental consequences, and diminishing energy resources. Our country was unified by the Iraq and Afghanistan wars, disputed presidential elections, and Hurricane Katrina.

Responding to the state's budget deficits in the early-to-mid 2000s, student fees rose, ending the decade at \$36 per unit – still the lowest enrollment fee of any college in the nation.

On the Mesa, it was a good news-bad news decade. In November 2002, San Diego voters overwhelmingly approved Proposition S, the SDCCD's \$685 capital construction bond measure that would dramatically transform the campus for decades to come. Just two months later, then Governor Gray Davis lowered the boom with unscheduled mid-year budget cuts. Deeper cuts would follow through the decade that, at the same time, saw an increased demand as students turned to college to improve their job and employment skills during the "great recession."



- 2002 – Graduate and actress Annette Bening (Class of 1977) returns as commencement speaker. She recognizes Mesa faculty, saying “we all need teachers like this.”

- 2003 – San Diego voters overwhelmingly approve Proposition S, the SDCCD's

\$685 capital construction bond measure. That followed in 2006 with approval of Proposition N.

- 2008 – The \$28.9 million Allied Health Education and Training Facility, the Mesa College police station and parking facility open, and the football and track fields get a face-lift.

- 2009 – Mesa's world-class Olympian Speech and Debate Team return from Berlin as reigning international champions.

- 2009 – President Barack Obama's education team makes a stop at Mesa College to host a community forum addressing educational reform.



# 2010s

Across higher education, 2010 was a difficult year, with effects of the great recession widely apparent. Huge enrollment increases took a toll on institutional resources, and even when aggregate revenues and spending increased, colleges in general found themselves serving more students with less.

In 2011, Dr. Pamela T. Luster is welcomed as the sixth president of Mesa College.

Fueled by dedicated and resourceful faculty and staff, Mesa students excelled. Funded by voter approved Propositions S and N, the college was in the middle of its transformation into a state-of-the-art academic institution.

After five years of fiscal crisis and severe budget reductions, the passage of Proposition 30 in November 2012 resulted in partial restoration funding that took effect in 2013-14. Prop 30 brought a restoration of funds, and ushered in the first wave of recovery and increased funding for public institutions.



- **2010 – Civil Rights legend and activist Rosa Parks is memorialized with the opening of the Rosa Parks Transit Center.**
- **2011 – Ten of Mesa’s 20 men’s and women’s athletics teams – a full 50% – win their conference titles. The next year, Mesa College wins California’s most-coveted athletics award, the Chet DeVore Trophy.**
- **2011 – Community College Week magazine names Mesa College the fastest-growing community college in California and the 7th fastest-growing in the nation.**
- **2012 – Mesa opens the long-awaited one-stop shop for student success, the Student Services Center.**



# 2013/14 in Review

Mesa College's 50th year was filled with celebration and marked by major advancements. Anniversary celebrations were woven in to annual activities, and celebrated at Founders Day and Homecoming.

Also among this year's achievements and accolades...

- Mesa College celebrated the 84th birthday of educator, feminist, mentor, activist and philanthropist, **Gracia Molina de Pick**, with an unveiling and dedication of the Gracia Molina de Pick Glass Gallery in March.
- The **Math+Science Complex** – the largest instructional facility at a California Community College – officially opened in March, and its unique student study areas were an immediate hit with students.
- The **Communication Studies Program** was named the 2014 Model Communication Program by the Western States Communication Association.
- Professors **Ed Helscher**, **Madeleine Hinkes**, and **Michelle "Toni" Parsons** were recognized by the League for Innovation in the Community College as John & Suanne Roueche Excellence Awards recipients.
- Senior Secretary **Kathy Fennessy** was named Mesa's Unsung Hero of the year.
- Students **Sarah Farmer** and **William Keck** were named to the 2014 Coca-Cola All-California Academic Team (see page 20).
- Professor **Carl Luna**, whose work to create the Institute for Civic Engagement, has built community consensus in the greater San Diego community.
- **Physical Therapy Assistant** students won the Student Bowl at the California Physical Therapy Association's Annual Student Conclave.
- The **iMESA Mobile App** launched, providing online services and college information in the palm of your hand.
- **New faculty hires** bring an infusion of new talent and energy (see page 19).





# Leadership on the Mesa

A college campus is a town, a community of people. Think of everything that happens in a town, and it happens on a college campus. There are parking and infrastructure issues, champion sports teams, favorite places to hang-out with friends, places of learning and work, and outdoor places to gather. It's where members of the community achieve professionally and build a sense of family. But more than anything, it's a place of discovery, a place where opportunities for student success abound.

San Diego Mesa College has had six presidents since the college opened in 1964. As the COO and top executive – and yes, sometimes even as the town mayor – these six individuals have guided the college's growth and transformation and seen its academic programs grow to more than 195, and student population grow from 1,600 to more than 25,000 per semester.

A recent article in *Inside Higher Ed* listed top qualities for today's college presidents, including a collaborative mind-set, team development, tech savvy, globally focused and culturally attuned, and future focused.

"I would only add that one does not lead alone," said President Pamela T. Luster. "I am constantly amazed and thrive on the innovative contributions made by every member of our campus community – the campus leadership team, our faculty, staff and our students."

## Mesa College Presidents

Robert F. Heilbron, M.A., 1964-1968

Ellis Benson, Ed.D., 1968-1979

Allen Brooks, Ph.D., 1979-1993

Constance M. Carroll, Ph.D., 1993-2004

Rita M. Cepeda, Ed.D., 2005-2010

Pamela T. Luster, Ed.D., 2011-present



# A WALK THROUGH TIME



1964 - During San Diego's construction hey-days in the late 1950s and early '60s, huge tracks of homes rose in Clairemont and Linda Vista. In 1964, Mesa College rose above the mesa. It was originally built to serve 3,500 students.

## 1964

2002 - San Diego voters approve the SDCCD Proposition S Bond measure.

### 2003 - Humanities, Languages & Multicultural Studies Building

Project Budget: \$8.8 million; Proposition S  
Construction: 2001-2003  
Architect: Delawie Wilkes Rodrigues Barker  
Architects (A|DWRB)



## 2002



### 2009 - Merrill Douglas Football Stadium Renovation

Project Budget: \$4.9 million; Proposition N  
Construction: 2007-2009  
Architect: SDCCD, Lloyd Engineering, SDCA and Manuel Oncina Architects

## 2009

## 1992

1992 - Campus enrollment peaks at 29,000 students

1992 - Facilities updates begin

1996 - Learning Resource Center (LRC)

Project Budget: \$20 million; California State "Partnership for Excellence"



2006 - Proposition N passes. Voter passage of this SDCCD construction bond launches the second stage of a \$870 million, massive building, renovation and repair era for the 92-year-old San Diego Community College District.



### 2007 - Mesa College Art Gallery Renovation

Project Budget: \$1.51 million; Proposition S  
Architect: Mesquita & Associates

### 2009 - Allied Health Education and Training Facility

Project Budget: \$26.9 million; Proposition N  
Construction: 2008-2009  
Architect: Delawie Wilkes Rodrigues Barker Architects and SDCA  
Awards: LEED Gold Certification



### 2009 - East Gateway Entrance Projects Parking Structure, Police Substation, Rosa Parks Transit Center

Project Budget: \$34.92 million; Proposition S  
Construction: 2007-2010  
Architect: Delawie Wilkes Rodrigues Barker Architects (A|DWRB) and SDCA



# The Transformation of San Diego Mesa College



## 2010 - Mesa College Design Center

Project Budget: \$5.3 million;  
Proposition S  
Construction: 2010  
Architect: Delawie Wilkes Rodrigues  
Barker Architects (A|DWRB)



## 2014 - Social & Behavioral Sciences Building

Project Budget: \$40.5 million; Proposition S  
Construction: 2013-2014  
Architect: Joseph Wong Design Associates

# 2013

## 2015 - "Mesa Commons" Cafeteria, Bookstore, Reprographics and Stockroom

Project Budget: \$44.34 million; Proposition N  
Construction: 2014-2015  
Design-Build Team: Balfour Beatty Construction, SGPA, and Miller Hull Partnership  
Awards: On Track for LEED Silver Certification



# 2015



## 2018 - Central Promenade and Quad

Construction: 2017-2018

# 2017

# 2010

## 2012 - Student Services Center

Project Budget: \$45.8 million; Proposition S  
Construction: 2010-2012  
Architect: Architects Hanna Gabriel Wells  
Awards: LEED Gold Certification



## 2013 - Language Center and LRC Renovation

Project Budget: \$2.3 million;  
Proposition N  
Construction: 2013  
Architect: Architects Mosher Drew



## 2015 - Exercise Science Center

Project Budget: \$15.3 million;  
Proposition S  
Construction: 2014-2015  
Design-Build Team: Balfour Beatty Construction and gkgworks  
Awards: On Track for LEED Silver Certification



## 2017 - Center for Business and Technology

Project Budget: \$32.18 million; Proposition N  
Construction: 2014-2015  
Design-Build Team: Balfour Beatty Construction and Gensler

## 2017 - Fine Arts Remodel

Construction: 2016 - 2017  
Funding: \$9.1 million; Proposition N



## 2013 - Math+Science Complex

Project Budget: \$109.3 million; Proposition N  
Construction: 2011-2013  
Architect: Delawie Wilkes Rodrigues Barker Architects (A | DWRB)  
Awards: LEED Silver Certification

# OUR TIME OUR FUTURE

Now in its 51st year, San Diego Mesa College is at a pivotal point in its development as a community college. After many challenging years during the great recession, we are showing signs of recovery.

New university transfer degrees, new programs for students, and massive improvements in student support services designed to ensure student success, completion, and equity are among the new directions for San Diego Mesa College. Self-assessment efforts required in preparation for the comprehensive accreditation reviews in October 2016 will also be a focus for the college.

With these new directions, and a state-of-the-art campus environment made possible by the voters of San Diego, the timing is right to put into place plans that meet the demands that come with being a regional leader in higher education.

The college's 2013-19 Education Master Plan, and its Strategic Directions and Goals, will help to 'write the script' for Mesa's future. It establishes a vision for growth and addresses critical resource allocation questions for the near- and long-term.



- How do we build and best sustain our comprehensive community college mission?
- How do we assure student access, success and equity?
- How can we foster a vibrant student life, innovative teaching, and professional growth for those that work here?
- How do we build a sense of community, and advance a dynamic environment of teaching and learning?

The strategic directions provide a framework to answer these questions and many more. It takes the best qualities that already exist on the Mesa College campus and enhances them. Above all, it establishes a sense of place for those who work and teach here, and for the students whose chosen path to a successful future is San Diego Mesa College.



## College Mission

San Diego Mesa College empowers our diverse student body to reach their educational goals and shape the future. As a comprehensive community college committed to access and success, we promote student learning and achievement leading to degrees and certificates in support of transfer education and workforce training, and lifelong learning opportunities. Faculty and staff collaborate with our students to foster scholarship, leadership, and responsibility to effect positive change within our community.

## Vision

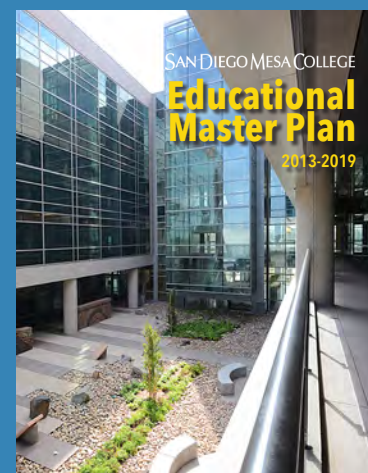
San Diego Mesa College shall be a key force in our community to educate our students to shape the future.

## Values

**Access**  
**Accountability**  
**Diversity**  
**Equity**  
**Excellence**  
**Freedom of Expression**  
**Integrity**  
**Respect**  
**Scholarship**  
**Sustainability**

## Strategic Directions

- Strategic Direction 1:** Deliver, advance, and support an inclusive teaching and learning environment that enables all students to achieve their educational goals.
- Strategic Direction 2:** Build and sustain a sense of community that extends across campus and constituencies, nurturing collaboration, learning, growth, and diversity.
- Strategic Direction 3:** Build and sustain pathways in support of the comprehensive community college mission.
- Strategic Direction 4:** Support innovation in our practices.
- Strategic Direction 5:** Support personal growth and professional development of our employees.
- Strategic Direction 6:** Serve as stewards of our resources and advance effective practices in support of accountability.



The entire San Diego Mesa College Education Master Plan can be viewed at [www.sdmesa.edu/institutional-effectiveness](http://www.sdmesa.edu/institutional-effectiveness).

# New Funding Sources Support Underrepresented Students



“One of the things we learned from the great recession is that we cannot assume that traditional funding sources will sustain us into the future,” notes President Pamela Luster. As Mesa College looks to its future, securing funding from grants, partnerships, and other private revenue streams will become part of the status quo.”

So far, so good. Grants received during fall 2014 alone totalled \$3.7 million.

Mesa was among 20 colleges and universities across the U.S. chosen as part of the government’s \$60 million Title V program, which supports opportunities for Latino students.

Mesa’s “Proyecto de Exitó” – which translates to Project Success – was funded at \$2.62 million, to be administered over five years. The project outlines innovative instructional and student support programs to strengthen the college’s ability to serve Latinos, which now make up about 32 percent of the student population.

Mesa also recently learned it would be getting nearly \$1.1 million over five years from the National Institutes of Health to extend the Bridges to the Baccalaureate Program that helps underrepresented groups studying biomedical or behavioral sciences to pursue careers in research.

Historically one of the college most successful programs for underrepresented students, the Bridges program focuses on academic research and provides for faculty mentors, tutors, counselors and training workshops.

“Our student population mirrors that of the greater San Diego area, and as such our commitment to our growing population of Latino and underrepresented students is critical,” said Dr. Luster. “Their success is our success, and as educated citizens our students contribute to greater economic advances for our community and the region.”





# Equity Matters

Equity is more than a buzzword at San Diego Mesa College. The college, which co-hosted the 2014 Region X Student Equity Conference in August, has made it a top priority, and is actively engaged in bringing fresh, new ideas and research-based practices into its student equity efforts.

Leading the cross-college effort are Dr. Julianna Barnes, VP/Student Services (pictured here), and Tim McGrath, VP/Instruction, who are quick to explain that everyone at Mesa – students, staff, faculty and administrators – are engaged in its student equity efforts.

“Our goal and my prediction is that Mesa College is on its way to becoming a leader in student equity,” said Barnes, “and that student equity will be woven into the fabric of what we do each day on the Mesa.”

Indeed. In 2014 alone, Mesa participated in a number of important professional development opportunities including the national conference of the Hispanic Association of Colleges and Universities, the National Conference on Race and Ethnicity, and USC’s Center for Urban Education Student Equity Institute. In spring, Mesa was re-designated as an Hispanic Serving Institution, with over 30% of students being Latino.

The college is currently developing a comprehensive student equity plan, which will be rolled out in 2015.





# Graduating to a Four-year Degree



Among the exciting possibilities for San Diego Mesa College moving into its 51st year is that it could be one of 15 community colleges in California to offer a baccalaureate as early as spring semester 2015.

On September 29th, Gov. Jerry Brown signed into law Senate Bill 850, authored by State Sen. Marty Block (D-San Diego), and passed by the State Senate on August 21.

SB 850 authorizes the California community college system to establish a pilot program that would allow no more than 15 campuses from 15 different districts to offer one baccalaureate degree each starting Jan. 1, 2015, and ending July 1, 2023.

City, Mesa, and Miramar colleges have each submitted possible plans, but the proposal from Mesa for a Health Information Technology degree is the closest match for the criteria and affordability requirements.

Among the bill's champions is San Diego Community College District Chancellor Constance Carroll.

"One of the most important community college missions is preparation for the workforce," notes Dr. Carroll. "Having an accessible, affordable, and high-quality bachelor's degree option will enable community colleges to ensure that our students are competitive in the job market. This is a win-win proposition for California."



# Wave of Talent Infuses New Energy

In 2014-15, Mesa College also saw an infusion of new talent, welcoming 27 new faculty-tenure members. Thirteen faculty members, including three counselors, started in spring 2014, and 14 more assumed Assistant Professor positions in fall 2014.

The newly minted Class of 2014 includes seven current adjunct professors at Mesa College, a Mesa graduate, and four doctoral degree holders.

In addition to their professional knowledge and love of teaching, the professors bring a passion for community involvement, global awareness, citizenship, the environment and having fun in the sun. The background photo here shows Sim Barhoum catching a wave in Indonesia.

"It has been an amazing experience," reflected Dr. Luster. "I couldn't be more pleased and appreciative of the time, effort and commitment so many made to the hiring process."

To help new faculty assimilate into the Mesa culture, the college has launched its Teaching and Learning Academy, which offers a series of professional development workshops for all faculty and staff. Recent topics included Student Learning Outcomes, best-practices for engaging students, and integrating technology into every discipline's classroom.



**Spring 2014 Hires:** Uriel Ornelas, French; Dr. N. Scott Robinson, Music; Howard Eskew, Jr., Business; Lisa Shapiro, Business; Lauren Wade, Accounting; Troy Clark, Geographic Information Systems (GIS); Dr. Jennifer Sime, Anthropology; Amy Beeman, Psychology; Dr. Justin Estep, Psychology; Dr. Helen Greenbergs, Psychology; Irma Dagnino, Counseling; Adam Erlenbusch, Counseling; Kirsten Pogue-Cely, Counseling.



**Fall 2014 Hires:** Front row (l-r): Pegah Motaleb, English; Marie Alfonsi, English; Gina Abbiate, Mathematics; Dr. Waverly Ray, Geography; Dr. Jennifer Carmichael-Jenkin, Biology.

Center row (l-r): Rick Cassoni, Computer Information Science (CISC); Meegan Feori, Fashion Design; Tonya Whitfield, Culinary Arts; Dr. Amanda Hernandez, Chemistry.

Back row (l-r): George Ye, Dramatic Arts/Theater; Anne Kincade, Communication Studies; Emily Kay, Web Development; Sim Barhoum, English; Dr. Ryan Mongelluzzo, Anthropology/ Archeology.



# Models for Student Success

## Sarah Farmer

There is no better example of student success than Mesa's own **Sarah Farmer**. This spring Sarah, 21, of Poway, was named to the 2014 All-USA Community College Academic Team. This all-star academic team consists of only 20 students from the entire country, selected from more than 1,700 students, and nominated by more than 800 community colleges.

She and fellow student **William Keck** were also honored as All-California Academic team members. Sarah was the top scorer in the state, earning the title of 2014 Coca-Cola New Century Scholar for California, which comes with a \$2,000 scholarship and a plaque from the Coca-Cola Foundation and Coca-Cola Scholars Foundation.

"At Mesa, I found the encouragement and programs to thrive – both in and outside the classroom," Sarah told fellow graduates at commencement 2014. Sarah entered UCLA this fall on full scholarship and plans to pursue a doctorate in psychology.

## Carlos and Linda LeGerrette

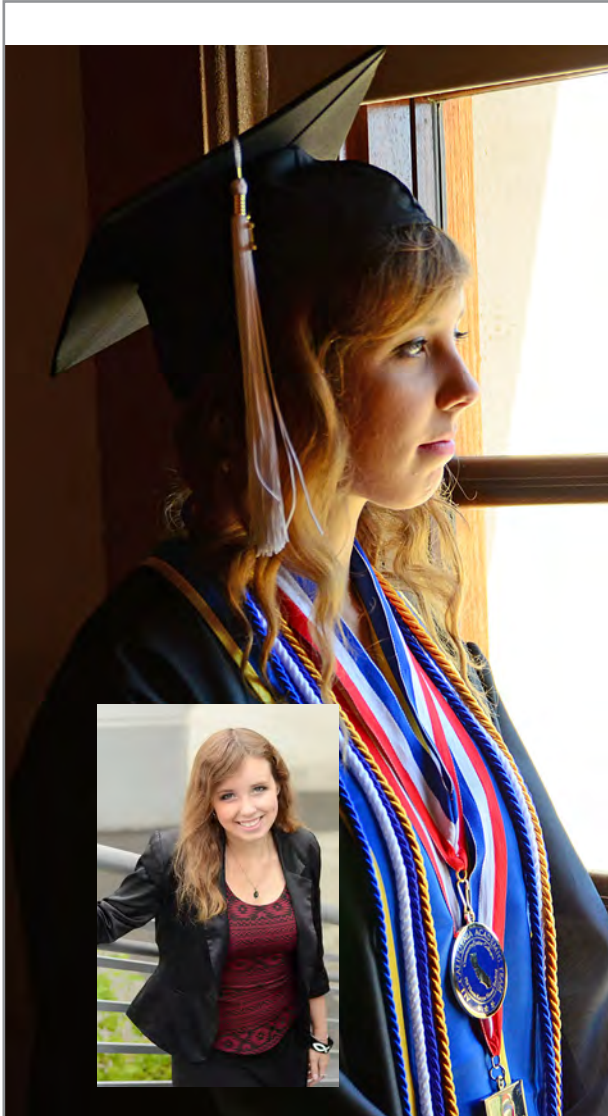
For more than 50 years, **Carlos and Linda LeGerrette** have been committed to service, equality, education, and social justice. In May, at the college's 50th commencement exercises, the couple was named 2014 Distinguished Alumni.

The LeGerrettes were students at Mesa College during the mid and late '60s – a tumultuous time in our nation's history. Their life's work was influenced by that time, by their professors, and a then-new academic program now called Chicana/Chicano Studies.

While students, the LeGerrettes joined Cesar Chavez in fighting for the rights of farmworkers. They worked closely with Chavez for more than a decade, and later continued to work on democratic causes.

In 2001, they founded the Cesar Chavez Service Clubs, which teaches young students civic responsibility and leadership based on values Cesar Chavez promoted.

"Mesa College is where we cut our teeth. It was our beginning. Without the great teaching and guidance from our professors I doubt very seriously that we would have the foundation necessary in making the wonderful and challenging decisions that have brought us to where we are today," said Linda LeGerrette.





# The San Diego Mesa College Foundation

The San Diego Mesa College Foundation is a non-profit organization that focuses on the critically important task of raising funds to support a broad array of student success programs.

Scholarships have been a priority for the foundation, as studies continually show that students receiving some sort of financial assistance do better in college. This past year, 114 scholarships totaling \$86,175 were awarded.

Three endowments were added, increasing the value of the foundation's endowments to \$934,384. The foundation also received \$206,667 in non-endowed contributions.

In addition to scholarships, the foundation provided \$89,021 in support for programs that increase student success.

In 2013-14, the foundation focused its efforts to support the more than 4,000 student veterans who attend Mesa College. A Veterans Resource Center (VRC) was created with help from Jerome's Furniture, which generously donated a roomful of furniture for the VRC. The foundation also provided funds for a veterans speakers program, increased outreach efforts, and created an emergency assistance fund to keep a financial crisis from derailing a veteran's college goals.

For the 2014-15 year, the foundation is creating new scholarships, expanding its support of student veterans, and exploring additional ways to support student success.

If you or your organization would like to discuss opportunities to invest in students and programs at Mesa College, please contact Anne Zacovic at 619-388-2285.

*"The San Diego Mesa College Foundation builds its community, inspires excellence and creates an enlightened tomorrow."*



## SAN DIEGO MESA COLLEGE FOUNDATION

### BOARD of DIRECTORS

Steve Cooke, President

Jeremy Sanders, Vice President

Kathy Fennessey, Secretary

Petar Kralev, Treasurer

Rachelle Agatha

Elizabeth Armstrong

Dr. Julianna Barnes

Will Burfitt

Barbara Busch

Jesus Escudero, IV

Lina Heil

Tom Kaye

Celeste Kupperbusch

Laurie Mackenzie

Jeff Marston

Ricky Maveety

Tim McGrath

Dr. Denise Rogers

Jerry Roxas

Susan Topham

**Dr. Pamela T. Luster, President**

San Diego Mesa College

**Anne Zacovic**

Director of Resource Development

# Mesa at a Glance

Among the largest community colleges in California and the nation, San Diego Mesa College is a fully accredited, comprehensive two-year college serving 25,000 students and offering more than 195 associate degree and certificate programs. With its premier fine art and music programs, robust language offerings and rigorous math and science curricula, Mesa ranks as San Diego's top transfer institution. The college also serves as an important economic catalyst for the region. Its career programs include allied health fields, biopharmaceutical, multimedia, animal health technology, American Sign Language, hospitality, culinary art, fashion, architecture, interior design and more. Situated on a beautiful, suburban 104-acre mesa in the geographic center of San Diego, the college's small classes, outstanding faculty, and reputation for quality offer an unparalleled academic experience. As an HSI and AANAPISI (Title V and Title III) eligible institution, Mesa College is committed to the success of all students, including underrepresented students, and more than 1,000 veterans and their families.

## Founded 1964

Fall 2013 Enrollment: 25,280

Cost: \$46 per credit unit, CA resident

## Student Profile

52% female, 48% male

27% First Generation College Students

48% Students receiving financial aid

4% Students receiving DSPS services

24% Full time students (12 or more credits)

75% Part time students

## Age

64% under 25

17% between 25-29

12% between 30-39

7% over 40

## Ethnicity

33% White

32% Latino

14% Asian/Pacific Islander

7% African American

5% Filipino

9% Other/Unreported

## Top Five Majors Selected by Students

Undeclared AA/AS 3,793

Transfer 2,819

Business Administration 2,327

Biology 1,617

Unclassified Restricted Tech Program 1,550

## Degrees and Certificates Awarded 2013-2014

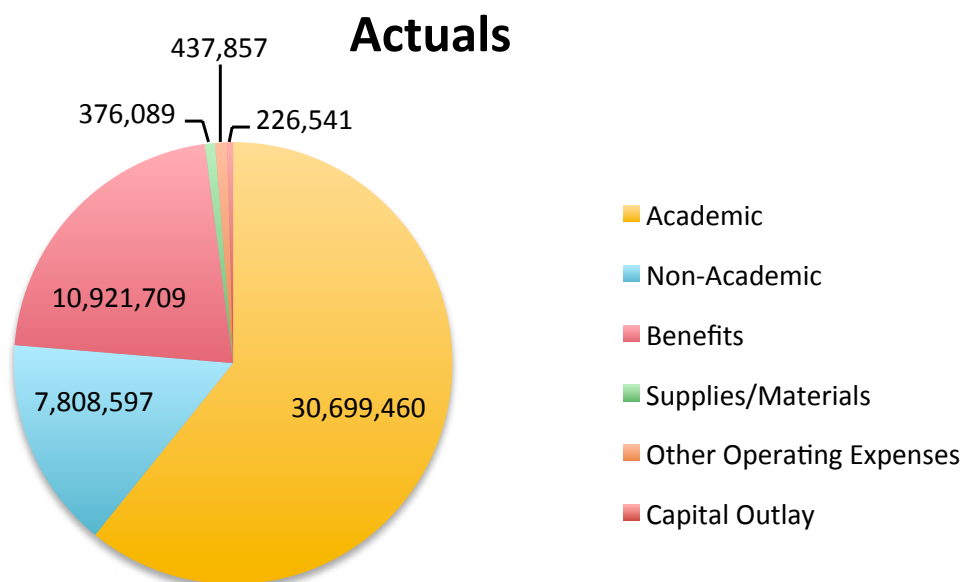
AA/AS Degrees 1,003

Certificate of Achievement 308

Source: SDCCD Facts on File 2013-2014, 2014-15 Edition



# Mesa College 2013-2014 Actual Expenses



Category	Adopted	Adjusted	Actuals	Balance
Academic	30,823,525	30,855,207	30,699,460	155,747
Non-Academic	7,949,566	8,048,838	7,808,597	240,241
Benefits	10,325,512	10,342,811	10,921,709	-578,898
Supplies/Materials	707,268	707,635	376,089	331,546
Other Operating Expenses	429,005	481,643	437,857	43,786
Capital Outlay	227,623	227,623	226,541	1,082
<b>Totals</b>	<b>\$50,462,499</b>	<b>\$50,663,757</b>	<b>\$50,470,253</b>	<b>\$193,504</b>

The San Diego Mesa College Report to the Community has been published online since 2006 at [www.sdmesa.edu/news](http://www.sdmesa.edu/news). A minimum quantity is printed on 100% recycled paper. To request a printed

copy, please call 619-388-2759. Published by: San Diego Mesa College Communication Services. Editor: Lina Heil. Photography: Anabel Pulido, Carol Beilstein and Alan Decker. Design: Carol Beilstein.

# SAN DIEGO MESA COLLEGE

7250 Mesa College Drive  
San Diego, California 92111-4998  
619-388-2600  
858-627-2600  
[www.sdmesa.edu](http://www.sdmesa.edu)  
[www.facebook.com/sandiegomesacollege](http://www.facebook.com/sandiegomesacollege)

**Pamela T. Luster, Ed.D., President**

Tim McGrath, JD, Vice President, Instruction  
Julianna Barnes, Ed.D., Vice President, Student Services  
Rachelle Agatha, CPA Vice President, Administrative Services

The San Diego Community College District includes City College, Mesa College, Miramar College and Continuing Education. The SDCCD is governed by its Board of Trustees. No oral or written representation is binding on the San Diego Community College District without the express approval of the Board of Trustees.

San Diego Community College District Board of Trustees:  
Mary Graham; Rich Grosch; Bernie Rhinerson; Maria Nieto Senour, Ph.D.; Peter Zschiesche  
Constance M. Carroll, Ph.D., Chancellor



**SAN DIEGO COMMUNITY COLLEGE DISTRICT**

CITY COLLEGE • MESA COLLEGE • MIRAMAR COLLEGE • CONTINUING EDUCATION