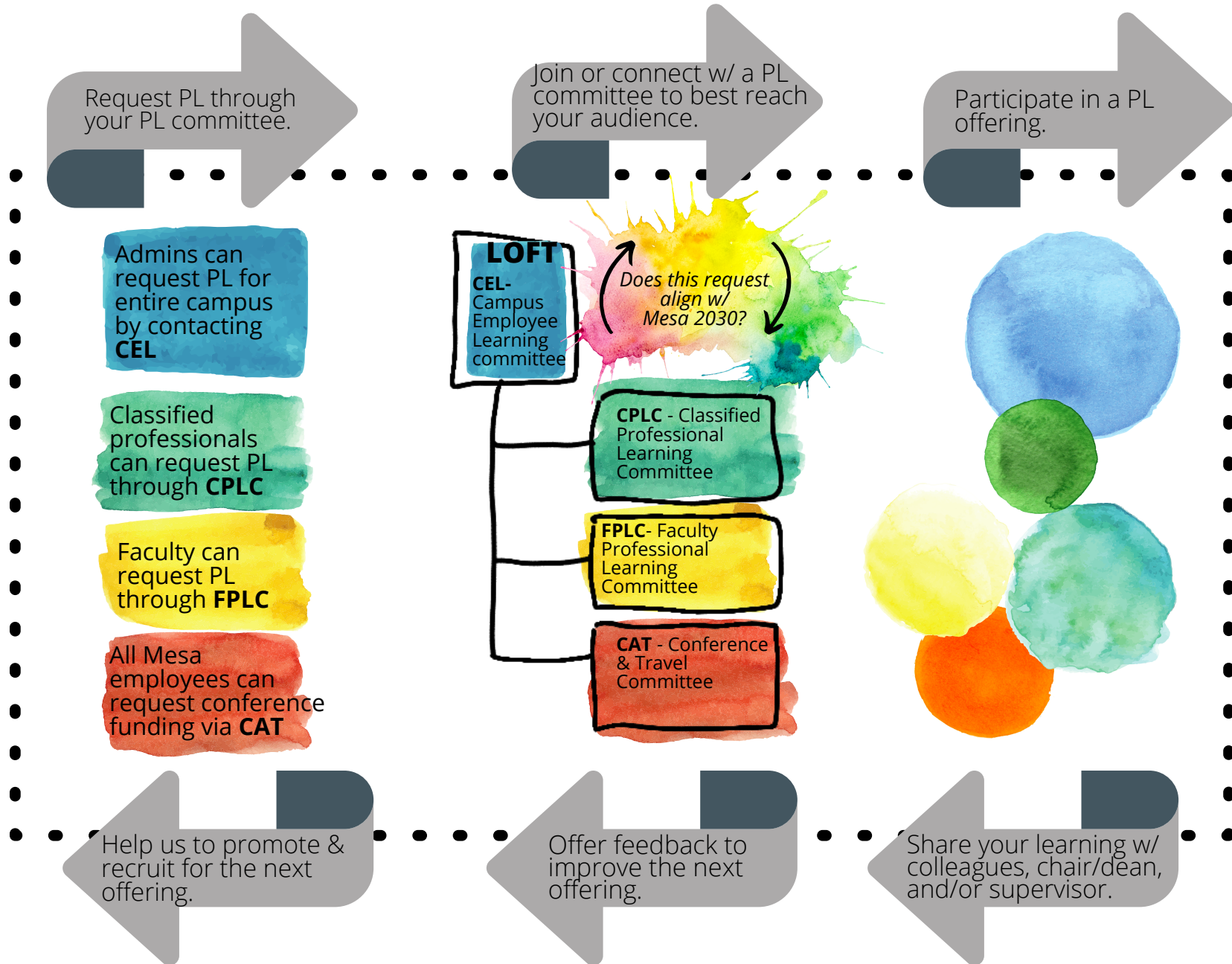
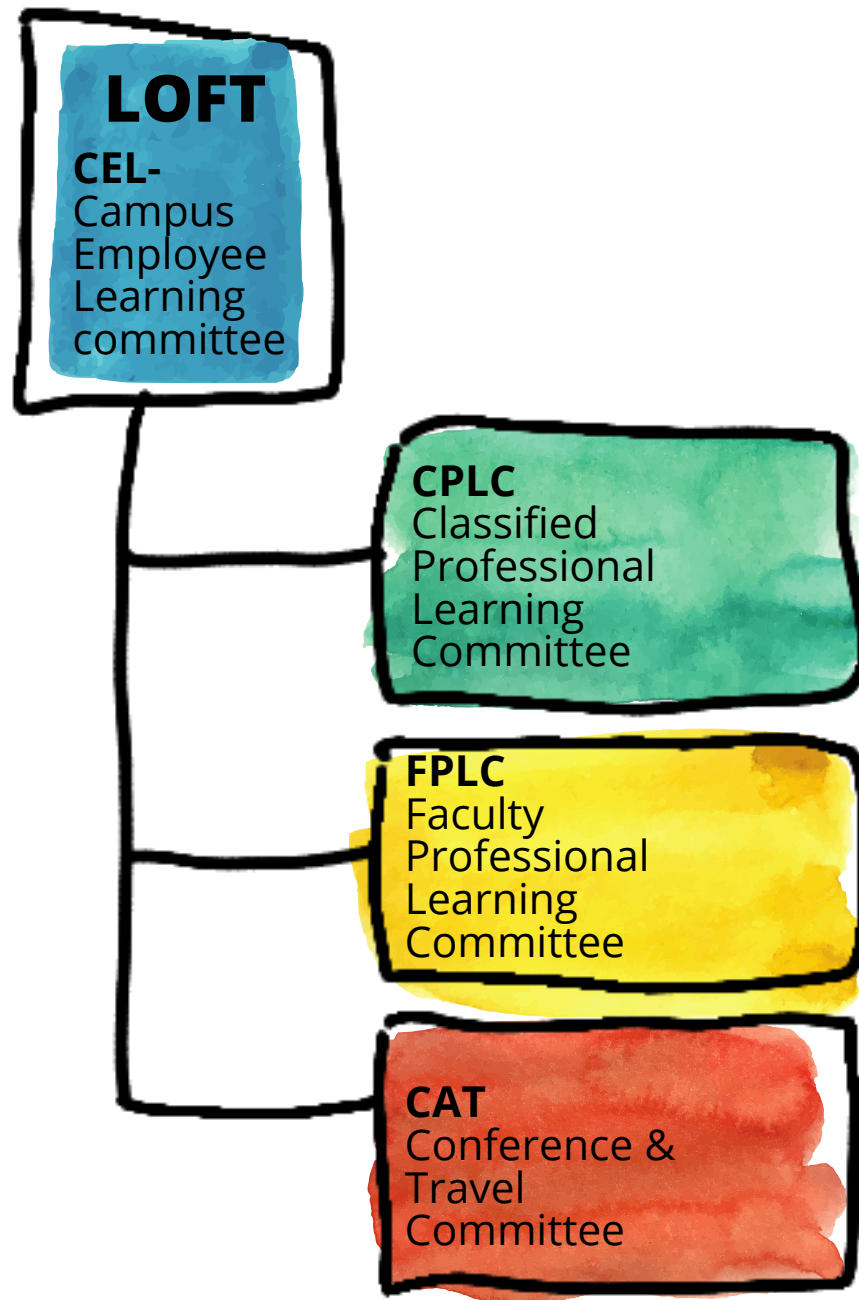


# Be Part of PL\* @ Mesa

\*PL = professional learning



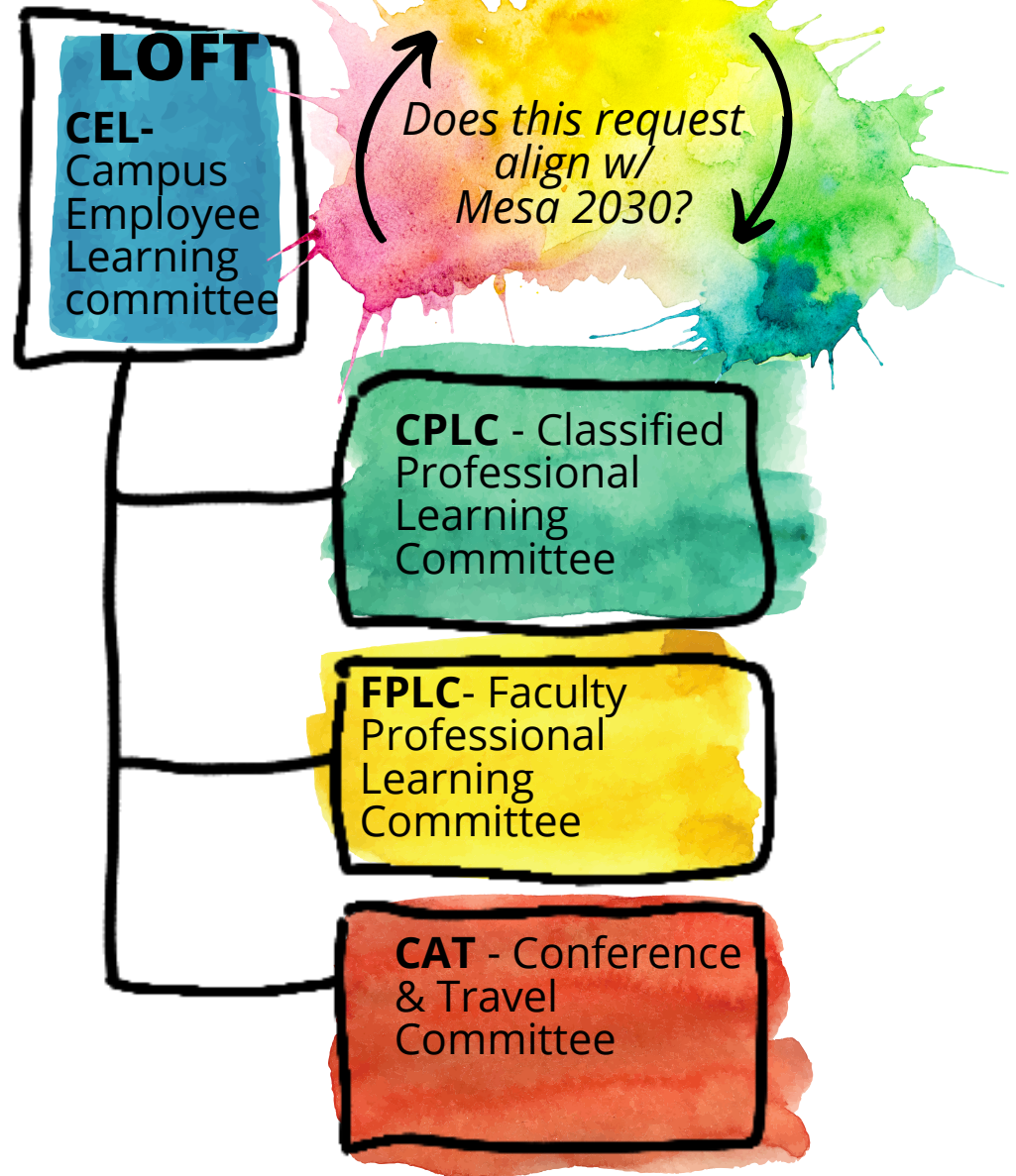


Admins can request PL for entire campus by contacting **CEL**

Classified professionals can request PL through **CPLC**

Faculty can request PL through **FPLC**

All Mesa employees can request conference funding via **CAT**





# Faculty Professional Learning Committee



## Connect w/ FPLC!

If you offer training to Mesa faculty, then connect with FPLC to help you reach your faculty audience!

## What does FPLC support?

FPLC supports various professional learning offerings in various ways:

### Who is on FPLC?

Representation from faculty & professional learning initiatives across campus.

- Professional Learning Coordinator
- Instructional Designer
- OER Librarian
- Classroom faculty from across Mesa
- Non-classroom faculty
- NFI coordinator
- MOST representative
- HSI PL coordinator
- Outcomes coordinator
- CDAIE PL coordinator
- DEI Events & Activities coordinator
- Dean of LRAS
- any coordinator involved in PL

### Need help w/ acronyms? We got you.

CDAIE: Committee for Diversity Action Inclusion and Equity

CEER: Curriculum Equity & Excellence Review

DEI: Diversity Equity Inclusion

FIGs: Faculty Inquiry Groups

FPLC: Faculty Professional Learning Committee

HSI: Hispanic Serving Institution

LRAS: Learning Resources & Academic Support

MOSAIC: Mesa's Open Shared Accessible Inclusive Courses

MOST: Mesa's Online Success Team

NFI: New Faculty Institute

OER: Open Educational Resources

PL: Professional Learning

### Catalyst

[bit.ly/catalystmesa](http://bit.ly/catalystmesa)

A teaching conference during Spring Flex

### MOSAIC

[bit.ly/mesamosaic](http://bit.ly/mesamosaic)

Mesa's OER cohort

### NFI

New Faculty Institute

### FIGs

[bit.ly/loftfigs](http://bit.ly/loftfigs)

Group projects initiated by faculty

### Teaching Tree

[bit.ly/mesacollege TeachingTree](http://bit.ly/mesacollege TeachingTree)

Fostering peer-to-peer idea-sharing and conversation around equity-minded teaching practices

**FPLC Newsletter coming soon!**

### MOST

[sdmesa.edu/most](http://sdmesa.edu/most)

Online Course Design cohorts each semester

### CEER

A summer cohort to examine course data & support equity-infused course redesign

*What other PL can we support? Connect w/ us!*

Want to join or connect w/ FPLC? We'd love to hear from you!  
Please contact Dr. Janue Johnson @ [jjohnson001@sdccd.edu](mailto:jjohnson001@sdccd.edu)