

San Diego Mesa College

Administrative Services Updates – October 18, 2022

Agenda

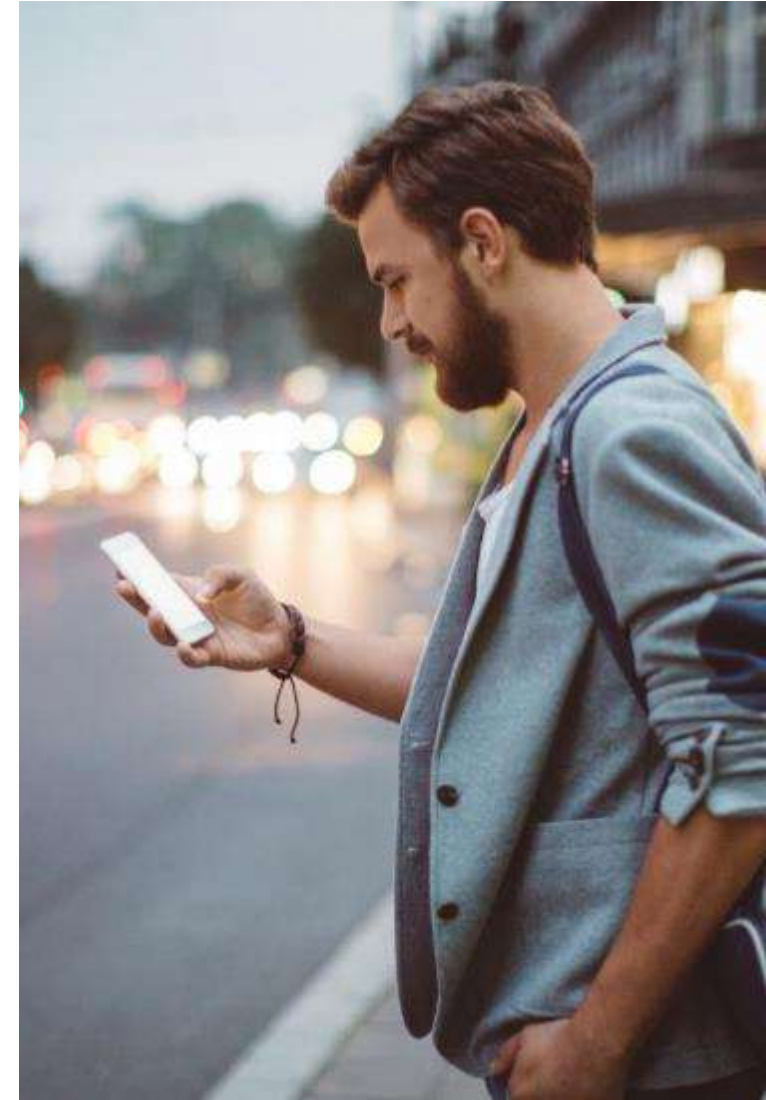
C-CERT Callout

Emergency Evacuation Map

Furniture Refresh – Student Study Areas

LRC Carpet

Computer Refresh



San Diego Mesa College C-CERT Callout

Dear Colleagues,

As we approach ShakeOut Day 2022, Mesa College is working to update its list of those who participate on the Campus-Community Emergency Response Team (C-CERT).

Please take a brief moment to answer the questions below, letting us know if you would like to continue your participation.

1. Name:

2. Would you like to continue to participate on the Mesa College C-CERT?

☐ Yes

☐ No

3. Do you still have your C-CERT backpack?

☐ Yes

☐ No

C-CERT Membership Update

As part of the *Great ShakeOut*, College Events & Operations has sent a callout to the campus, requesting that members respond by October 20, letting us know whether they would like to continue their participation on Mesa College's C-CERT.

Emergency Evacuation Map Update

Emergency Evacuation Maps have been updated and will be posted and distributed throughout the campus in the next week, in locations including:

- Building exits
- Stairwell
- Classrooms
- Offices

SAN DIEGO MESA COLLEGE Campus Evacuation Zones



In case of emergency, please report immediately to the designated location point according to your building evacuation area.

Evac. Zone	Building	Location Point	Evac. Zone	Building	Location Point
1	A, B, C, and D100	Lot #9	8	Social Behavioral Sciences (SB), Athletics (L100, Gym, Pool, O), Facilities Services (L200), Stadium West	Upper Field
2	Business Technology (BT), and Humanities (G)	Lot #6	9	Mesa Commons (MC) and Exercise Science (ES)	Tennis Courts
3	Learning Resource Center (LRC) ★	Lot #10	10	Campus Police, Parking Structure	Lot 5 North
4	D200 and English Village	Lot #11	11	Child Development Center (R)	Lot 5 South
5	Veterinary Technology (P100-P200-P300)	Organic Garden	12	Allied Health (S100)	Lot 5 North
6	Fine Arts (FA) and Student Services (I400)	Lot #1	13	Continuing Education	Lot #4
6A	MET HS	Lot #1	14	Architecture (Z100) and Stadium East	Lot #2
7	K100 and Math and Natural Sciences (MS)	Mesa Commons Quad			

In the event of an emergency evacuation:

Remain calm and walk quickly to the nearest exit. Do NOT use elevators. Make sure all students have evacuated classrooms/labs. Once outside, proceed to the designated Evacuation Zone. Wait for instructions. Do not reenter the building until instructed by College Police/other emergency personnel. Keep roadways and walkways clear for emergency vehicles.

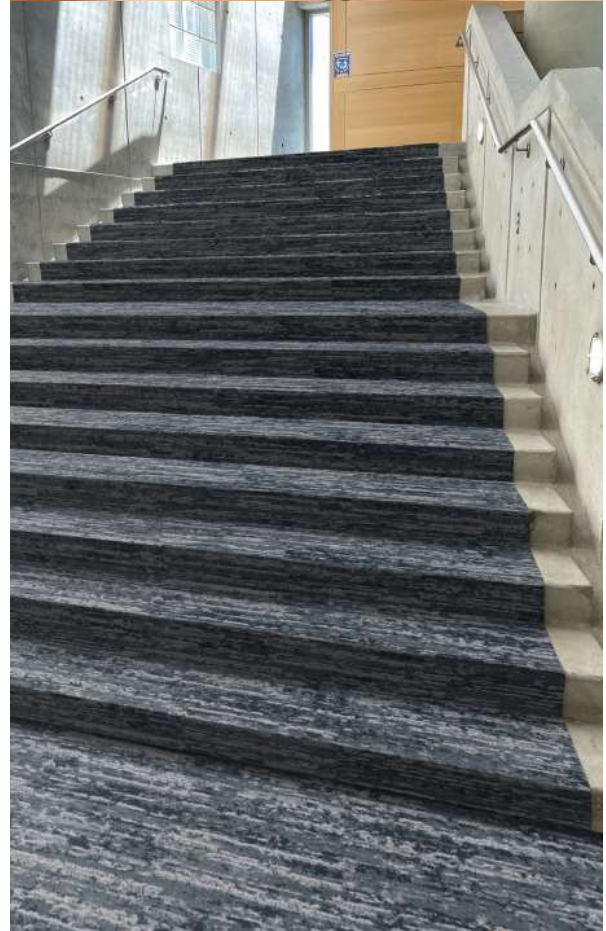


Student Study Area Furniture Refresh

Study areas are located in many places throughout the campus, and furniture has become heavily worn. These spaces will be reimagined and refreshed to provide areas that are:

- Conducive to collaboration in a post-pandemic educational environment
- Inviting and Comfortable
- Designed to allow adequate distance between students
- Maximizing use of space





LRC Carpet Refresh

Computer Refresh

Project Manager (PM): Eric Brown

Project Leads (PL): Tony Lo & Alex Napoles

Project Start Date: November 1st, 2022

Estimated Completion Date: January 13th, 2023 (Phase I)



As of Wednesday, October 18th Mesa will have just over 700 PCs.



Inventory & soft setup to happen first.



Working on the priority with District and Local IT



The roll out will happen over the course of 6 to 9 months