

SAN DIEGO
MESA COLLEGE



FALL 2019

CONVOCATION

The Privilege of Serving Mesa College Students and Our Community

Thursday, August 15
8:30 a.m. - 12:00 p.m.

San Diego Mesa College Gymnasium

Featuring
Keynote Speaker

TIM WISE



**THE IMPACT OF
PRIVILEGE ON EQUITY
IN HIGHER EDUCATION**



Welcome



Pamela T. Luster Ed.D.
President

Today's Agenda

- 8:30 Welcome
Campus Updates
- 10:00 District Visit: Board President Maria Senour,
Chancellor Constance Carroll and AFT President Jim
Mahler
- 10:30 Keynote Speaker: Tim Wise
*The Impact of Privilege on Equity in Higher
Education*
- 11:30 Celebrations/Olympians Spirit Awards
- 12:00 Thank You



Mesa's Executive Leadership Team

- Pamela T. Luster, Ed.D., *President*
- Isabel O'Connor, Ph.D., *Vice President, Instruction*
- Ashanti Hands, Ed.D., *Vice President, Student Services*
- Lorenze Legaspi, *Vice President, Administrative Services*

Governance Fall 2019

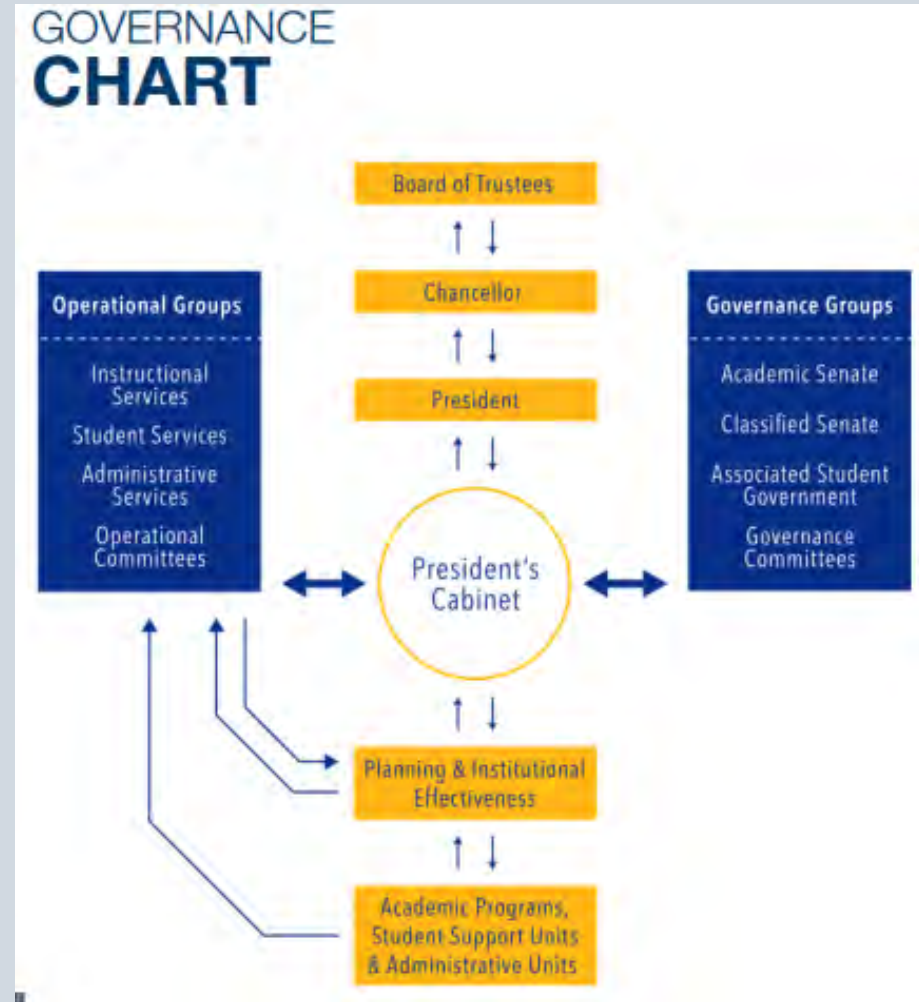
Working Together at Mesa College

www.sdmesa.edu/about-mesa/governance

Manuel Vélez, President, Academic Senate

Charlie Lieu, President, Classified Senate

Taylor Carpenter, President, Associated Students



President's Message

Dr. Pamela T. Luster
President

ACADEMIC SENATE UPDATE

Manuel Vélez
President, Academic Senate

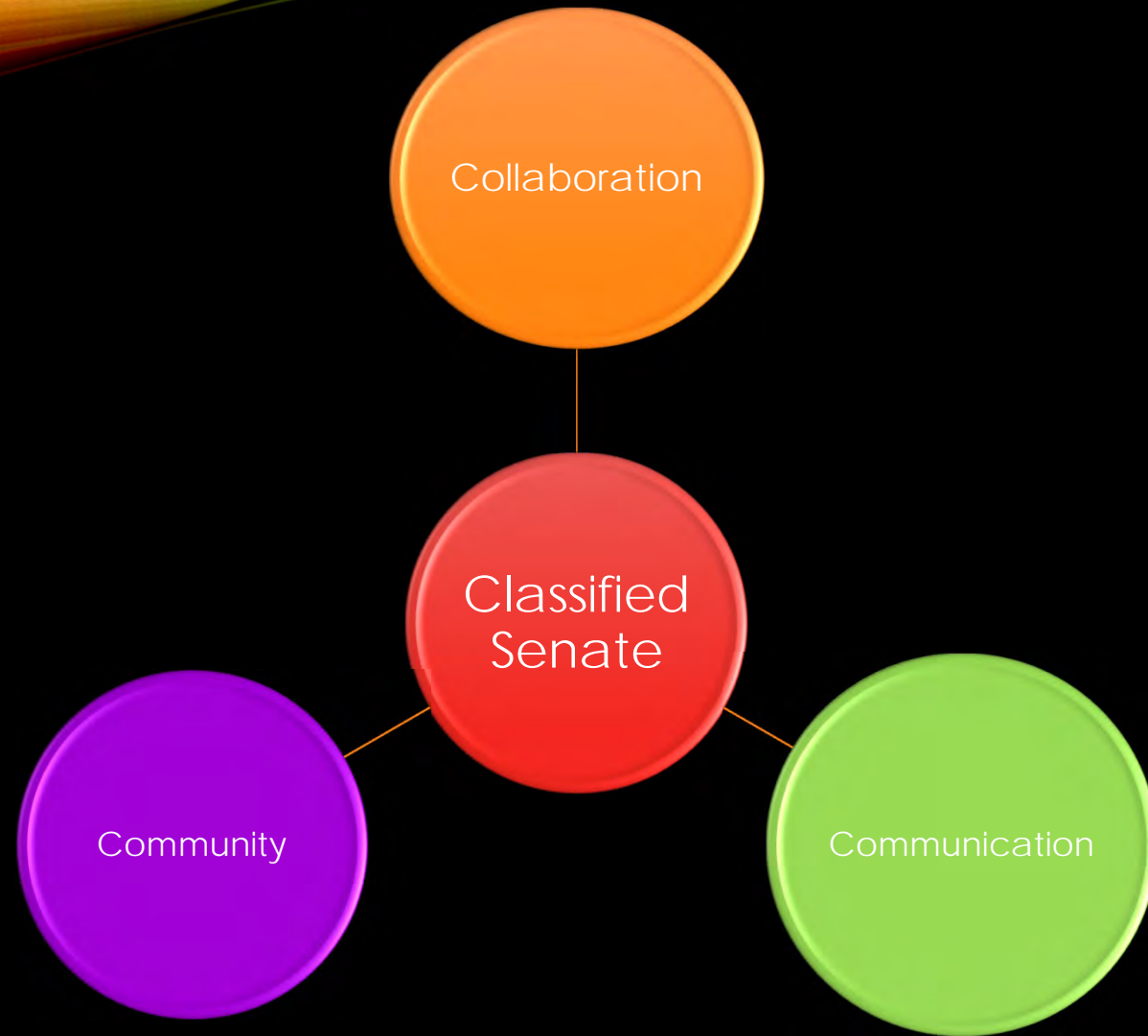
CLASSIFIED SENATE UPDATE

Charlie Lieu
President, Academic Senate

MESA COLLEGE CLASSIFIED SENATE



GOALS



ASSOCIATED STUDENTS UPDATE

Taylor Carpenter
President, Associated Students

New and Promoted Faculty and Classified Professionals

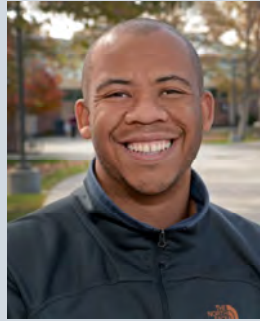
Welcome to Mesa College



Faculty – New and Promoted



MARISA ALIOTO
Counselor,
Online Emphasis



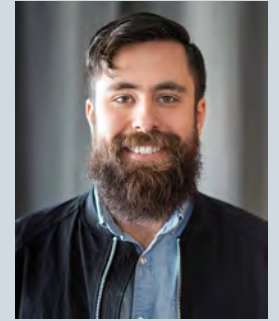
MARCUS BERRIEN
Counselor,
NextUP/CAFYES



ERIN EVANS
AP, Sociology



ERIKA HIGGINBOTHAM
DSPS Coordinator/Counselor



JAMES HINTON
AP, Physics



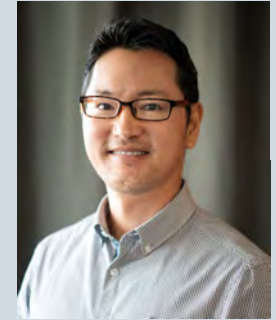
EDEAMA ONWUCHEKWA
AP, Librarian, Equity/Engagement



LINDSAY SAMANIEGO
AP, Women's Basketball



CHRISTINA SANCHEZ
AP, Sociology



TAKESHI TAKAHURA
AP, Japanese

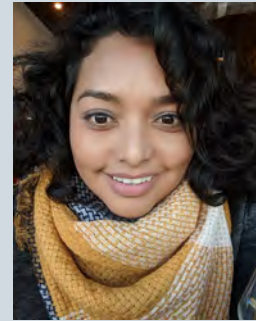
Classified Professionals – New and Promoted



CELINE AHEARN
SSA (promotion)



TREVOR AMERY
Instr. Lab Tech



RAQUEL APARICIO
SS Supervisor I



JACQUELINE COLLINS
College Events and Ops.
Admin. (promotion)



ERICA CROSS
Media Clerk



BRIANNA GARCIA
SSA (promotion)



CARLA GROSSINI-CONCHA
Admin. Secretary



ZULMA HERALDEZ
Sr. Secretary



VICKI HERNANDEZ
SS Supervisor I

Classified Professionals – New and Promoted



CLORIS JOHNSON
Sr. Secretary



JOMELYNNE LIM
Instr. Lab Tech



CLAUDIA PERKINS
EEO/504/Discipline
Officer (promotion)



LUIS SUAREZ
Instr. Lab Tech



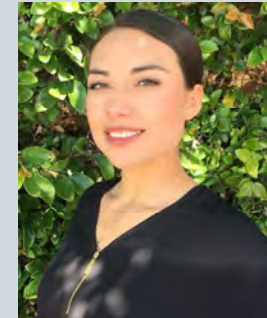
AMARA TANG
SSA (promotion)



KARLA TRUTNA
Outreach Coordinator
(promotion)



**SOHATH "ZAMIRA"
YUSSEFF-VENEGAS**
Instr. Lab Tech



BLANCA ZAVALA
SST (promotion)

Instructional Updates



Isabel O'Connor, Ph.D.
*Vice President,
Instruction*



Enrollment

2018-2019	
Target FTES:	13,490
Reported FTES:	14,131
2019-2020	
Target FTES:	12,854

Reflections from an Eight Month VPI Journey



Coordinates on the Instruction Map:

- Dedication
- Equity
- Excellence
- Innovation
- Leadership
- Powerhouse
- Student Success



Updates

- **AB 705 Implementation:**
 - Math X courses: Community of Practice
 - English
 - ELAC Placement Tool: Jorge Villalobos and Tracey Walker
 - Basic Skills ... our students still need them!
 - Library Services and Tutoring: Now More than Ever



On the Move!

Curriculum:

- **UC Transfer Pathways:** Physics and Chemistry (more to come in CS, BIO, Engineering and Music (Performance Track))
- Recoding: CB 21 and 25 (SCFF)
- PACE: Online Business Admin. Degree

Partnerships:

- Education: Pipeline with National University
- SDUSD: CCAP, Tutoring
- San Diego State: Bilingual Education, Sustainability



Bachelor's Degree Program:

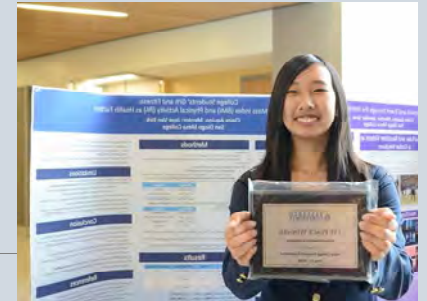
- LAO Report due on February 1, 2020
- Special Thanks to Hai Hoang, IE Office

Hispanic Serving Institution:

- Submitted HSI Title V “Camino E3”
2019 grant proposal
- Exploring NSF HSI Grant



Students Going Places!





MESA PATHWAYS

The Mesa Pathways Committee (MPC) uses an integrated, equity-minded, student-centered approach to facilitate student success. Through structured educational experiences, MPC works to close equity gaps, improve student outcomes and guide students into and through college to the completion of personal, academic and professional goals.





Mesa Pathways – From Inquiry to Design

Four Work Groups for 2019-2020

Guided Majors and Mapping:

- 80-90% of mapping done by end of Fall
- Cross-disciplinary conversations (Mesa Mixers!)
- Discussion around Academic and Career Pathways

Brave Communication:

- Communication plan
- Professional learning on inclusive and effective communication

Proactive Student Supports:

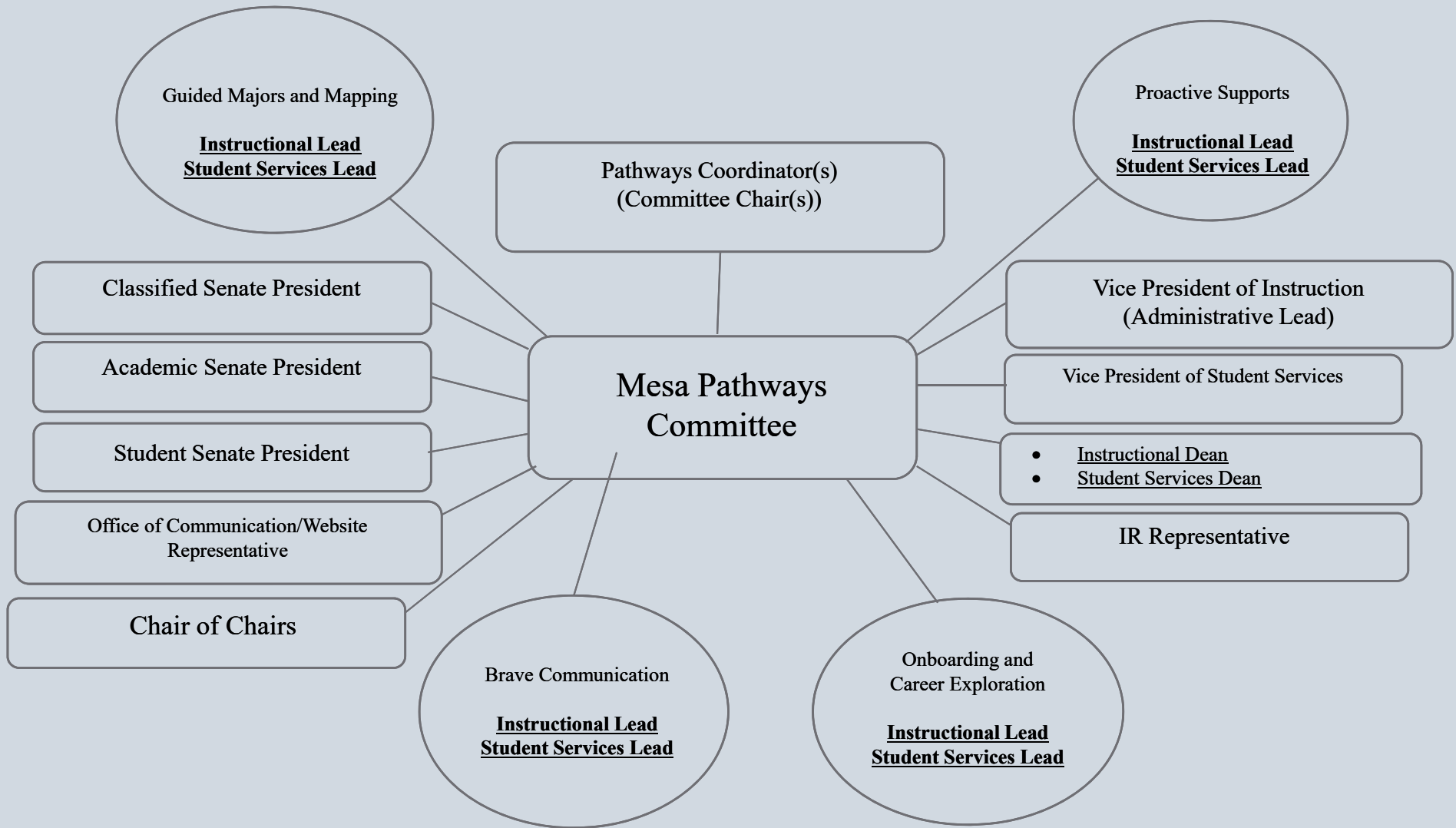
- Tutoring
- Student success teams
- Momentum points
- Title III and Title V

Onboarding and Career Exploration:

- Mesa Journeys
- CRUISE
- CCAP
- Outreach

Revised website coming soon!





Note: As the MPC work changes, so will this structure.

2018-2019



All Hands on Deck!

Mark Abajian, Gina Abbiate, Valerie Abe, Tim Ackerson, Evan Adelson, Gabriel Adona, Amber Alatorre, Johanna Aleman, Marie Alfonsi, Jim Arenegard, Becca Arnold, Christine Balderas, Blythe Barton, Aracely Bautista, Markus Berrien, Nathan Betschart, Amy Bettinger, Leela Bingham, Robyn Bolden, Sade Burrell, Jennifer Carmichael, Yolanda Catano, Jill Chagnon, Vanndaro Chhum, Katlin Choi, Kris Clark, Pavel Consuegra, Nancy Cortes, Ailene Crakes, John Crocitti, Alison Damoose, Jeaneal Davis, Nick DeMeo, Adrienne Dines, Nellie Dougherty, Joseph Doumbia, Donna Duchow, Ian Duckles, Christine DuPraw, Howard Eskew, Justin Estep, Claudia Estrada-Howell, Shawn Fawcett, Michael Fitzgerald, Joan Fitzgibbons, Donna Flournoy, Larry Foster, Tasha Frankie, Giovanni Garcia, Maci Gerber, Dwayne Gergens, Lou Ann Gibson, Danielle Gomez, Kelsey Graham, Helen Greenbergs, Alison Gurganus, Paula Gustin, Mary Gwin, Joseph Halcott, Terrence Hale, Ashanti Hands, Michael Harrison, Anne Hedekin, Taneisha Hellon, Ed Helscher, Linda Hensley, Ramiro Hernandez, Bridget Herrin, Erika Higginbotham, Madeleine Hinkes, Hai Hoang, Andrew Hoffman, Christina Huynh, Nicolas Irving, Holly Jagielinski, Ingrid Jayne, Manny Jacobo, Leroy Johnson, Janue Johnson, Cloris Johnson, Amanda Johnston, Elizabeth Jones, Kyung Ae Jun, Jason Kalchik, Chris Kalck, Inna Kanevsky, Ian Kay, Jennifer Kearns, Suzanne Khambata, Mona King, Terry Kohlenberg, Brianna Kuhn, Ken Kuniyuki, Mariam Kushkaki, Trina Larson, Sam Lee, Lorenze Legaspi, Jaime Lenke, Jeannette Leon, Charlie Lieu, Natalie Lindenberg, Leticia Lopez, Alicia Lopez, Pam Luster, Tara Maciel, Andy MacNeill, Mark Manasse, Guillermo Marrujo, Larry Maxey, Thekima Mayasa, Anda McComb, Melanie McCray, Phyllis Meckstroth, Patricia Meyer, Nicole Michals, Victoria Miller, Kimberly Mills, David Milroy, Dina Miyoshi, Ryan Mongelluzzo, Jill Moreno Ikari, Pegah Motaleb, Bruce Naschak, Lisa Naungayan, Rebecca Nieman, Isabel O'Connor, Uriel Ornelas, Miriam Pacheco, Valerie Pallares, Kari Parker, Toni Parsons, Kim Perigo, Claudia Perkins, Olivia Picolla, Trish Power, Allison Primoza, Cindy Purnell, Mariette Rattner, Waverly Ray, Tina Recalde, Anthony Reuss, Sean Ricketts, Cynthia Rico, Adriana Rivas-Sandoval, Raul Rodriguez, Michelle Rodriguez, Patty Rodriguez, Denise Rogers, Monica Romero, Marie Saint Luis, Dora Schoenbrun-Fernandez, Asif Shakeel, Iman Shamseldin, Lisa Shapiro, Leslie Shimazaki, Cynthia Short, Jennifer Sime, Jordyn Smiley, Cara Smulevitz, Raquel Sojourner, Diana Solares, Kelly Spoon, Leslie Styles, Scott Suarez, Chris Sullivan, Michael Temple, Gelsey Thomas, Craig Thompson, Susan Topham, Oscar Torres, Kim Tran, Helen Trejo, Tracy Tuttle, Jaye Van Kirk, Manuel Velez, Jorge Villalobos, Karen Wait, Tracy Walker, Duane Wesley, George Ye, Charlie Zappia

Pathways Activity – Ready for fun!



You will need:

- Phone
- Become a student sheet (on table)
- Reflection sheet (on table)
- Input from all persons at your table
- Patience
- Open mind

Directions:

- Go to the Mesa app on your phone
- Go to academic programs and find your major
 - Blue – Biology
 - Red – Psychology
 - Yellow – Business
- On the “Becoming a Student” sheet, plan your first semester here at Mesa (15 min)
- Fill out the Reflection sheet (leave on table)



**FOR YOUR
PARTICIPATION!**

Student Services Updates

Ashanti Hands, Ed.D.,
Vice President Student Services



Dr. Ashanti Hands
Vice President
Student Service



Ailene Crakes
Dean
Student
Development



Larry Maxey
Dean
Student Success &
Equity



Vicki Miller
Dean
Student Affairs

Student Services Leadership Team
All in for Students

20

Departments

Admissions
Assessment and Testing
Associated Students | Clubs
AVANZA Engagement Center | Peer
Navigator | CRUISE
CalWORKs
Career
Counseling & Orientation
Disability Support Programs & Services
EOPS/CARE
Evaluations
Financial Aid
Outreach & Community Relations
STAR TRIO
Student Affairs | Conduct
Student Equity
Student Development
Student Health
Transfer
Veterans & Records

18

Unique Student Needs

Abilities
African American (Umoja)
Athletes
Distance Education Students
Financial
First Generation
Food Insecure
Former Foster Youth
Formerly Incarcerated
Housing Insecure
International Students
LGBTQI
LatinX | Puente
New | 2nd Year students (CRUISE | Promise)
Single Parents
Clothing Closet
Undocumented Students
Veterans

175 +

Faculty & Classified Professionals



Online Counselor
Athletic Counselor
EEO | Site Compliance | 504 |
Student Conduct Officer



6

Unique Spaces

AVANZA Engagement Center, I4-203
FAST Center, D102
Serenity Space, I4-404
Student Services Center I400
The Stand, I4-204
Veterans Resource Center, D-101



FAST Center
Thursday, August 22, 2019
11:00am – 1:00pm. D-102



Veterans Resource Center
D-101

2018-19 Student Services Highlights

ALICE Training - **Associated Students Tedx**: Making Machiavelli Weep - **Breakfast Social**: Raised \$1,300 in scholarships for Veterans - **Campus Solutions** - **Career Next Steps with SDSU** - **Career Peer Ambassador Program**: 1257 hours for walk-in resume building - **CCCApply** Transitions - **Counseling**: CCAP Courses, Full-time Athletic Counselor, instructional partnerships, Athlete 101 - **Disbursed** \$778,716 in financial aid dollars to 887 students (April 2019) - **Districtwide Placement Assistant** - **Equity Crosswalk** - **Equity Definition** - **Equity Plan** (2019-2022) - **Evaluations Outreach** for GIS, HIM and HIET - **Farmers Markets**: 125,036 lbs of free fresh produce to 7,595 households - **Grants**: Veterans Resource, Mental Health, Angell Foundation - **Guided Pathways** - **Helpful Resources for Student Services** flyer - **Info Nights** w/ sessions in Spanish @ community locations. 125 students. 15 feeder schools - **Jumpstart Your Success/Cash in on Community College**: 450 participants - **Leaders Inspiring Transformation (LIT) Conference** for Foster Youth - **Majors at Mesa Day** - **Mental Health Collaborations** with Comm. Studies, Psychology, ELAC & Paradise Valley Hospital - **Mesa Journey 2.0** - **Middle School Engagement Activities**: 900 middle school students served - **New/Promoted Employees**: 1 Manager, 4 Faculty and 11 classified new positions (athletic & online counselor and EEO/504 Disciplinary officer) - **NextUp Partnership with Outreach**: More than 760 students introduced to services - **Peer Navigator & CRUISE**: Success Data - **Personal Growth**: Renewed focus on curriculum, teaching strategies and assessment - **Posse and Wounded Warrior** visits in support of Veterans - **Pre-enrollment Bundles**: application, placement, pre-reg workshops @ high schools. - **Pre-enrollment Bundles**: Assistance with application, placement, pre-reg workshops at high schools. 270 students served - **PROMISE COHORTS** – 800+ - **Scholarship Ceremony**: \$167,000 awarded - **Serenity Room** - **Student Centered Funding Formula, Campus Solutions** - **The Stand** - 44,972 pantry & 1,576 professional clothing items to 1,781 individual students - **Touchstone Group** for students who were on the Autism Spectrum - **Veterans Internship Program**

Creating conditions that matter for students to succeed!

Equity & Excellence



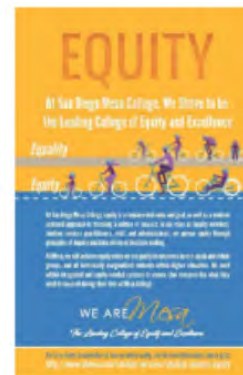
Equity Definition & Crosswalk

Instructions: Please follow the directions below to complete the Crosswalk and then, answer the reflection questions as a group.

- Signature/ Core Programs:** For the initiative listed above, please add the signature or core programs that are a part of the initiative along the top row of the Crosswalk on page 2.
- General-Level of Analysis:** For each column, add a checkmark to each corresponding indicator, if the aim or primary objective of that given signature program is to increase student success along that given indicator. Please see corresponding "Measure Definitions" (page 3) for a complete list of how San Diego Mesa College defines each indicator.
- Equity-Level of Analysis:** For each column on the Crosswalk (page 2), shade in the corresponding indicator box if the given signature or core program can answer yes to the following two questions:
 - Is it the aim of the program to specifically support (a specific marginalized group) along this indicator?
 - If so, is data collected that allows the program to understand how the program is impacting equity for this group(s) at San Diego Mesa College?
- Repeat steps 2-3 until each signature program is evaluated for each measure.

Leaders Engaging in Equity Practice

Inaugural Cohort!



- Deep dive into equity across multiple contexts
- Engage in reflection & action through collaboration
- PD Credit Available
- Guest Speakers, Hands-on, & Final Project Presentation
- Application deadline: **September 13, 2019**

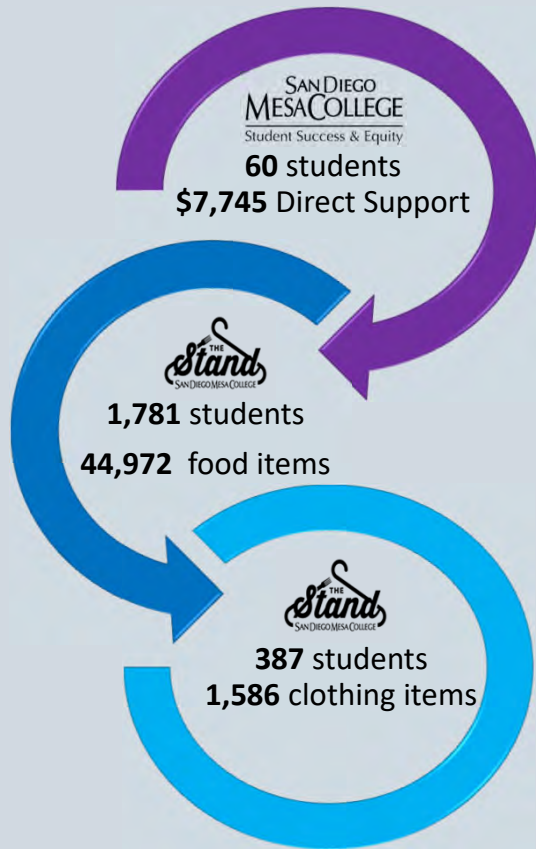
sdmesa.com/LOFT

San Diego Mesa College

LOFT

mesaloft@sdccd.edu

Basic Needs



Farmers Market (Monthly)

125,036 lbs
7,595 households

FREE fresh produce and shelf
stable items



Cal Fresh Program

51
students approved



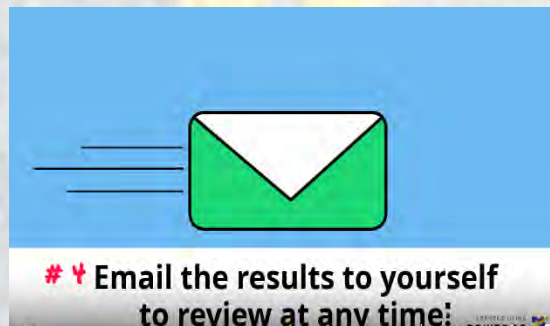
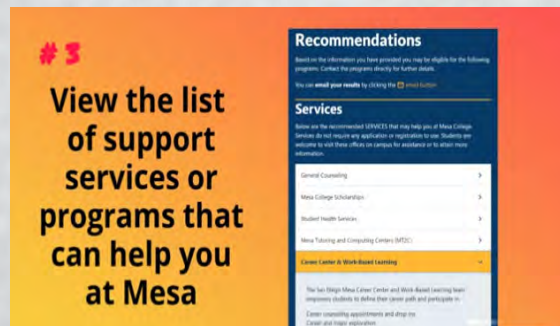
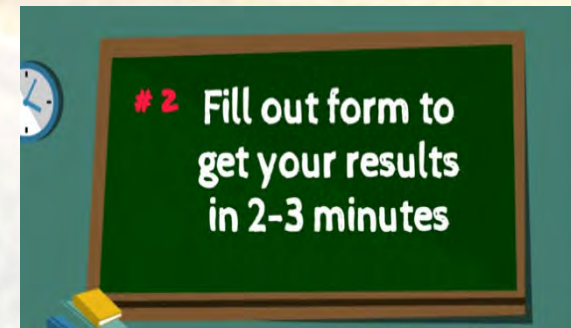
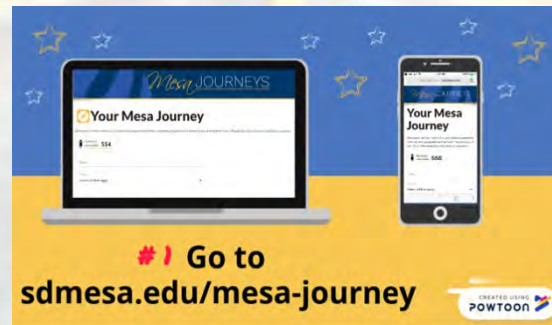
Pop Up Market
(Weekly)

1,215
Students Served

Hosted our first
Basic Needs
Summit



Mesa Journeys



Textbook Affordability

A partnership w/LRC, NextUp, DSPS, Tutoring & Career Education partnership

Save Money on Books

Scan Pages for Free!

1st floor of the LRC

The New Bookeye Machine is free and easy to use.

- Scan pages or sections from course reserves and textbooks
- Free digital copies
- Save on a thumb drive, cloud, or send to email



Contact:

Library Circulation Desk | (619) 388 - 2696

SAN DIEGO
MESA COLLEGE

Welcome Week



- Volunteer on Monday & Tuesday
- Encourage students to attend events

 Courtney Lee at clee@sdccd.edu for more information



- Let our students know that they matter and we care
- Share words encouragement for students



Visit the Student Affairs Table or fill out an index card



Stay Connected

Student Services Center 14-401
 Student Services Website <http://www.sdmesa.edu/student-services/>
 Student Services Monthly Updates <http://www.sdmesa.edu/student-services/student-services-reports.shtml>
 Helpful Resources for Students Flyer www.sdmesa.edu/student-services/Helpful20Resources%20for%20Students.pdf

Let's Learn Together

Student Equity [Larry Maxey](#)
 Student Conduct [Victoria Miller](#) & [Claudia Perkins](#)

Fall 19 Extended Hours

Friday, August 16th 8:00am – 5:00pm
 Saturday, August 17th 8:00am – 1:00pm

Administrative Services Updates

Lorenze Legaspi
*Vice President,
Administrative Services*



SAN DIEGO | MESA COLLEGE QUADRANGLE

Who makes up the Administrative Services Team?



Vice President of
Administrative
Services

Administrative
Secretary

Business Office
Support Services

Business
Services

College Events
and Operations

College
Technology

Printing and
Mail Services

Student
Accounting

Business Office Support Services



Business Office Support Services
provides support related to:

- the hiring process of faculty and staff
- payroll processing
- leave reporting
- other related services

Business Services



Business Services provides technical support to staff and faculty for:

- purchasing/requisitions
- travel authorizations and reporting
- financial reporting
- budget monitoring
- co-curricular accounting
- revolving cash fund transactions
- foundation accounting

College Events and Operations



College Events and Operations oversees the planning, organizing, and managing of programs and services of campus operations and events including:

- facilities operations
- maintenance coordination and planning
- facilities rental
- event coordination
- project management
- campus office moves
- stockroom functions
- safety program

College Technology & Printing and Mail Services



College Technology Services supports all campus technology:

- infrastructure
- hardware and software
- wireless
- electronic classrooms & labs
- video & audio
- event support project development

Printing and Mail Services provides support throughout Mesa in:

- preparation of instructional materials
- coordinating mail services
- printing services
- copier services

Student Accounting



Student Accounting coordinates the collection of fees and provides related services to students:

- process refunds for dropped classes
- issue printed grades reports and handle transcript requests
- sell monthly and semester trolley/bus passes
- accept and process payments for:
 - financial holds, parking permits, deferments, third party transactions, financial aid repayments, and child care fees

Budget Update



FACILITIES UPDATE



SAN DIEGO | MESA COLLEGE QUADRANGLE

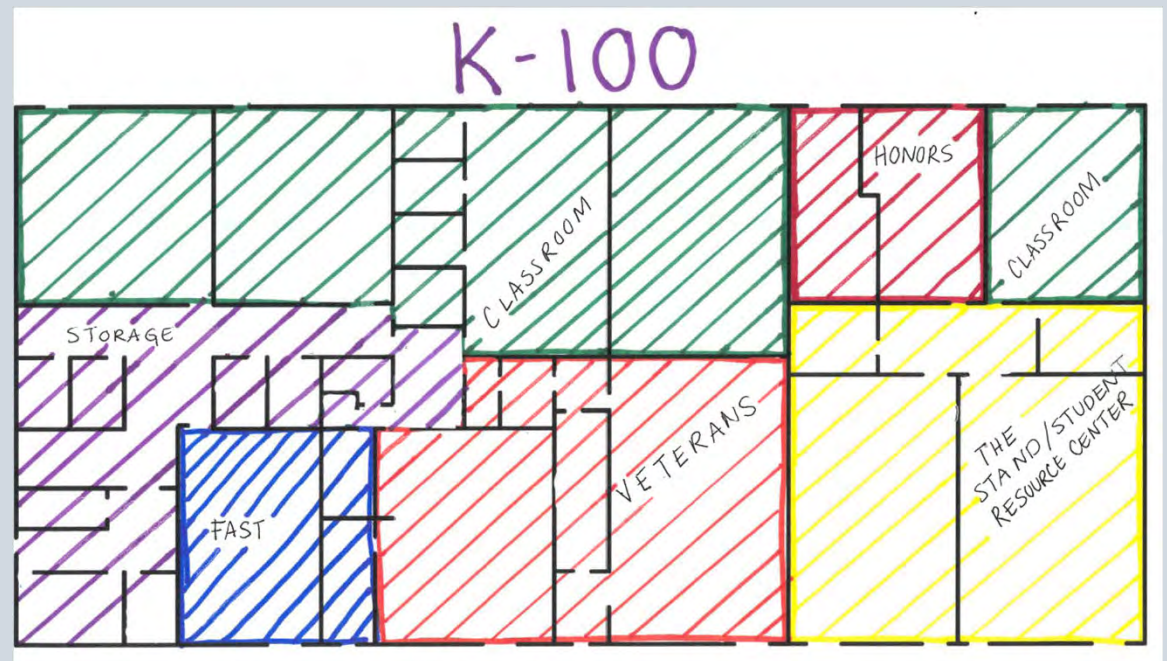
Facilities Update Cont'd



Facilities Update Cont'd

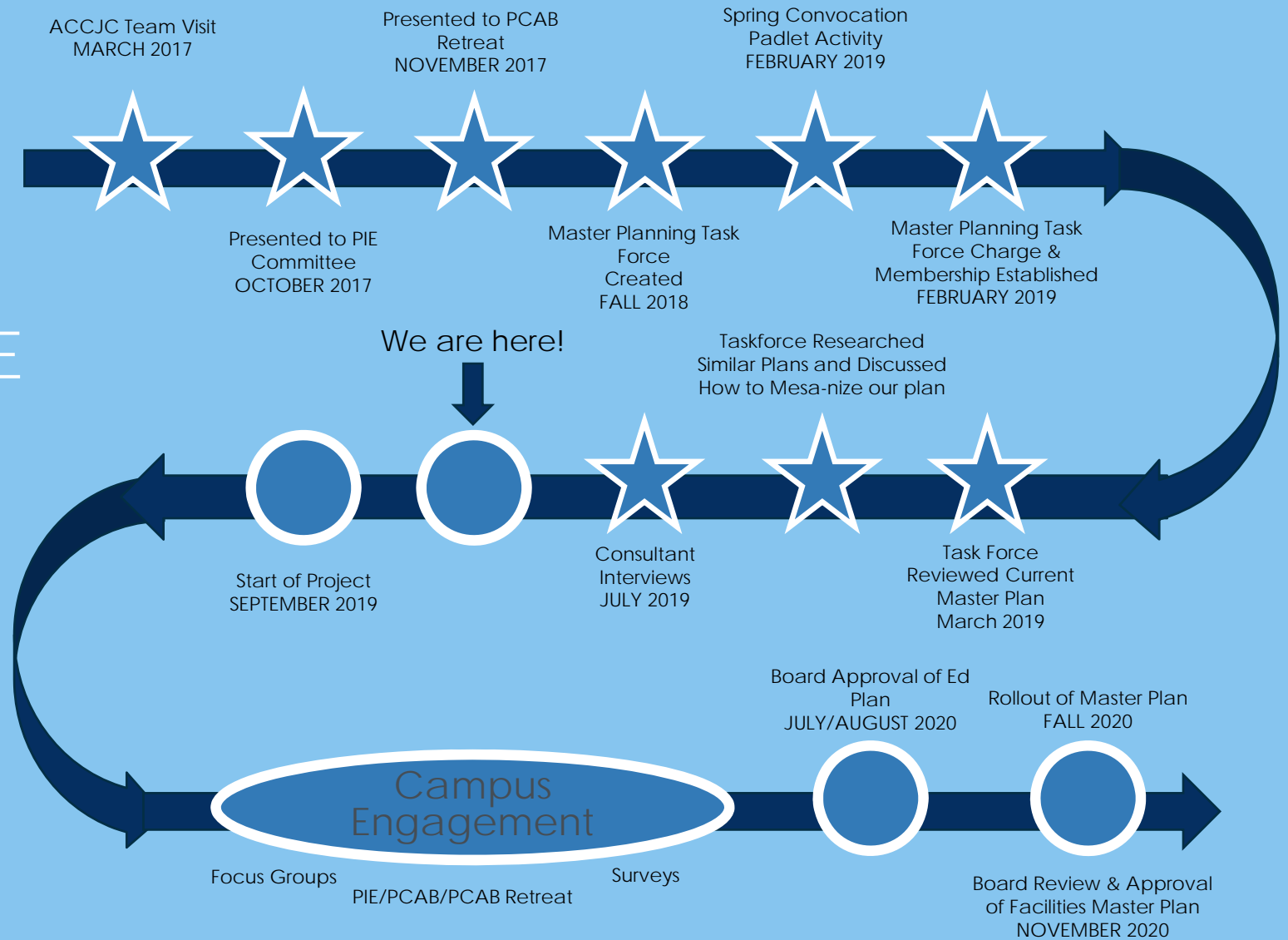
K Building Occupants:

- FAST
- Veterans
- Honors
- The Stand: Resource Center
- English Classrooms



MASTER PLANNING TASK FORCE TIMELINE

SAN DIEGO
MESA COLLEGE



Welcome: San Diego Community College District

Board President Maria Senour

Chancellor Constance Carroll

AFT President Jim Mahler

Keynote Speaker: Tim Wise



Resiliency Fund Match Challenge

Join us to help keep students in college

Over 40% of Mesa College students struggle with food insecurity and nearly 20% leave campus each night without a safe place to go. Yet, these students show up eager to learn, ready to work, and committed to building a brighter future.

That's resiliency.

Our goal is to raise \$250,000 to support students when they need it the most.

www.sdmesa.edu/Foundation



Double Your Impact
The Foundation will match up to **\$75,000** by **Nov 28th**.

The Resiliency Fund



Double your impact.

Be there for our students when they need it most.

visit www.sdmesa.edu/ResiliencyFund

Join Mesa College on Social Media

www.sdmesa.edu

sdmesaprez



/sandiegomesacollege



sdmesacollege

#SDMesaCollege

#WeAreMesa

#allin4students



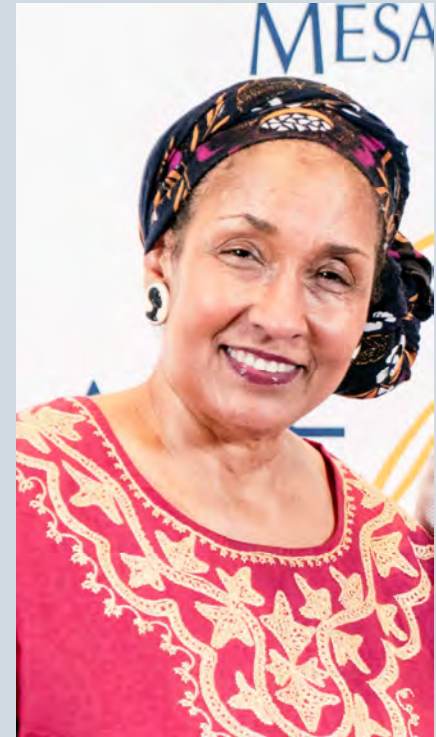
Upcoming Campus Events

- **Welcome Week:** Aug 19th – 23rd
- **Famers Market:** Thurs, Aug 22nd
- **President's Breakfast:**
- **Spirit Week:** Sept 16th-20th
- **Homecoming Pep-Rally and Football Game:** Sept 21st
- **Taste of Mesa:** Thurs, Oct 24th

Celebrations



The
Dr. Judy Sundayo
Diversity Scholarship



Thank You!

Have a Fantastic Semester!