

EMPLOYER- COLLEGE PARTNERSHIPS

SAN DIEGO MESA
COLLEGE WORK-BASED
LEARNING

Partner for Talent
Diversity of Mesa Students
Invest in Your Qualified Talent Pipeline

SAN DIEGO
MESA COLLEGE

INVEST IN YOUR TALENT

ACCESS QUALITY TALENT

San Diego Mesa College ("Olympians") is among the largest community colleges in California, offering training and education for 196 associate degree and certificate programs, including a four-year bachelor's degree. Company partners have the opportunities to collaborate with faculty to bridge students' educational learning with valuable real-work experiences and gain access to a pipeline of qualified potential candidates for your recruitment needs.

DIVERSIFY YOUR TALENT

Mesa students are diverse in their backgrounds and experiences. They have knowledge, work habits, character traits, and skills necessary to succeed in your organization's culture. Quality 21st Century Skills such as effective communication, adaptability, and social awareness are developed through our learning culture, course content, and instructional faculty. Students graduate from Mesa College prepared for today's rapidly changing work environment

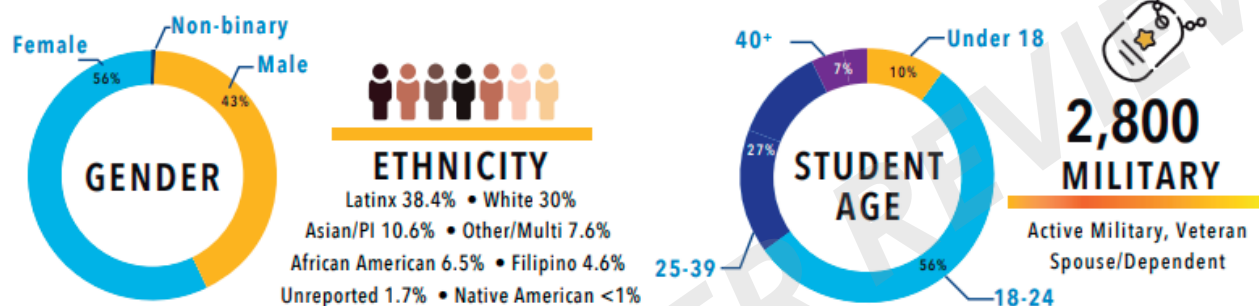
OPTIMIZE YOUR TIME

Your time is as valuable as your involvement! By becoming a company partner with Mesa College, your organization will help nurture student career exploration, improve training of desired skills, and increase interest in working for your company. Our WBL team will work directly with your organization to develop a customized partnership plan to address your employment needs and reduce hiring risks.



DIVERSITY & EXPERIENCE OF MESA STUDENTS

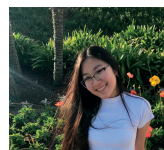
San Diego Mesa College's vision is to be the leading college of equity and excellence, educating students to change the future. As an Asian American and Native American Pacific Islander Serving Institution (AANAPISI), Hispanic Serving Institution (HSI) and recognized Military Friendly college, our campus community will bring you diverse contributors to your teams, expand your organization's overall knowledge, increase creativity and innovation, and create space for equity in the workplace and beyond. As a partner, your organization has access to quality talent who can enrich your teams and organizational growth today and in the future.



SNAPSHOT OF OLYMPIAN TALENT



Trevor Marshall - Molecular Biology, **Intern at CIRM- Published researcher at NEJM & Neuron (Co-author)**



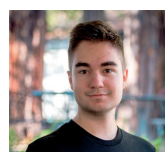
Kathleen Nguyen - Chemistry, **Intern at SDSU's Disturbance Hydrology Lab**



Crystal Crawford - Computer Science, **Intern & Hired at Qualcomm**



Lima Khalid - Civil Engineering, **Intern at TreoBytes**



Evgeny Berezhnov - Computer Science, **Advancing San Diego Intern at BeanStock Ventures**



Rosela Mae Gallardo - Computer Science, **Service Learning Project at You Rock! Program at St. Paul's Senior Center**

TRAIN AND PREPARE STUDENTS FOR INDUSTRY AND BEYOND



28,814

2021/22 ENROLLMENT



69%

% OF MESA STUDENTS
WORKING WHILE ATTENDING
SCHOOL



81

OF STUDENTS PARTICIPATING
IN WORK EXPERIENCE,
INTERNSHIPS, CLINICAL
PRACTICE AND OTHER WORK-
BASED LEARNING ACTIVITIES
(2021-2022)



52%

% OF 2021-22 SPRING
GRADUATES EMPLOYED IN
THEIR MAJOR OR DISCIPLINE



1,855

2021/22 MESA GRADUATES

Diversity of Mesa Students

Partner for Talent

MAKE A MARK FUTURE UNIVERSITY GRADS

53% of San Diego Mesa College students are completing their preparation requirements to transfer to a four-year university to earn their Bachelor's degree. In fall 2021, 684 students enrolling locally at San Diego State University (SDSU) and 185 University of California at San Diego (UCSD). In comparison to traditional university students, the majority of Mesa students transfer with an Associate's Degree and several years of work experience and hands-on training. By creating a presence at Mesa, your organization is investing in immediate entry-level talent as well as building your future leaders with diverse perspectives.

-  **Business Administration**
-  **Psychology**
-  **Communication**
-  **Biology/
Allied Health**
-  **Kinesiology**

Invest in Your Qualified Talent Pipeline
Diversity of Mesa Students
Partner for Talent

CAREER TRAINING & ACADEMIC PROGRAMS

San Diego Mesa College offers a wide breadth of training and academic programs across industry sectors. The curriculum of both discipline-specific and general education courses are intentionally designed with learning outcomes and skill development to foster holistic learning, more equipped citizens, and a better prepared workforce. Mesa's Career Technical Education* programs offer students technical, hands-on, and occupational training to meet industry needs.

SCIENCES & NATURAL RESOURCES

- Astronomy
- Biology
- Chemistry
- Geology
- Oceanography
- Physics

ARTS & ENTERTAINMENT

- Dance
- Dramatic Arts
- Fine Art
- Music

BUSINESS

- Accounting
- Administration
- Economics
- Entrepreneurship
- Fashion
- Marketing
- Real Estate



DIVERSITY & INCLUSION

- Black Studies
- Chicano Studies
- Communication Studies
- Languages

POLICY & SOCIAL SCIENCE

- Anthropology
- Geography
- History
- Philosophy
- Political Science
- Psychology
- Sociology

EDUCATION

- American Sign Language
- Child Development
- Education
- English
- Health

HOSPITALITY & TOURISM

Culinary Arts/Culinary
Management
Fermentation
Hospitality

INFORMATION & COMMUNICATION TECHNOLOGY

Computer Business Technology
Computer Information Sciences
Geographic Information Systems
Multimedia
Web Development

HEALTH

Dental Assisting
Exercise Science
Health Information Management
Health Information Technology
Medical Assisting
Nutrition
Phlebotomy
Physical Therapist Assistant
Radiologic Technology
Veterinary Technician

ENGINEERING, ARCHITECTURE & DESIGN

Architecture
Building Construction
Engineering
Interior Design
Mathematics



DEVELOPING A TALENTED WORKFORCE THROUGH 21ST CENTURY SKILLS

Adaptability	Empathy
Analysis/Solution Mindset	Resilience
Collaboration	Self-Awareness
Communication	Social & Diversity
Digital Fluency	Awareness
Entrepreneurial Mindset	

Partner for Talent

PARTNER TO ENHANCE YOUR ORGANIZATION

Work-Based Learning activities consist of exposing students to varying engagement with industry and employers to encourage career exploration and prepare a more highly-skilled workforce. As a WBL partner, you'll have an opportunity to promote your company and industry to Mesa students, gain access to train qualified candidates, and emphasize the necessary skills to be successful in the today's workforce. Below are some of the ways for your organization to partner with Mesa College Work-Based Learning:

INTERNSHIPS:

Gain access to paid and unpaid internship resources and how to effectively post and recruit qualified students and/or alumni for your organization.

WORK EXPERIENCE:

Work Experience is an academic class associated with a **job, internship, or volunteer** position. While students learn new skills and gain real-world training in this non-traditional class, they are supported by faculty and focus on developing their career skills.

"The 21st Century Skills workshops were awesome and extremely beneficial! I think that all colleges should require these courses upon graduating. All too often people are capable of going to work or obtaining a degree, but important skills such as the ones discussed in the workshops are lacked." -
Mesa Health Information Management Student

ON-CAMPUS & VIRTUAL INTERVIEWS:

Gain direct access to students and promote equity through on-campus or virtual interviews. Our team can assist in referring qualified students that meet the qualifications for your organization or positions.

SERVICE LEARNING:

Students receive valuable skills and experience while providing a service to your community organization as part of their course participation. Students apply hands-on learning in the real world, acquire new skills, and explore career options.

PROFESSIONAL INDUSTRY PANELS:

Engage in our industry panels to provide relevant insights into a variety of career paths within your sector, while sharing your career journey experience with our students.

HANDS-ON INDUSTRY PROJECTS:

Partner companies collaborate with various classes and faculty where students investigate an industry problem to develop new ideas and recommendations for resolving a need for your organization (ie: new product, increase sales, outreach to a demographic,

- Students have an opportunity to engage with your organization's professionals, get exposure to your company/industry, and learn about organizational structure within a real-world context.
- Partner companies will gain access to free research for your company, build your brand awareness, and utilize innovative ideas and solutions to enhance your organization.



INDUSTRY SPECIFIC EVENTS:

Connect with our Mesa Work-Based Learning team and program specific faculty to create events that reach qualified students and alumni who can meet your employment needs and prepare students to enter the workforce

CAREER FEST:

Each semester our team hosts a week long career fest with a variety of events centered around student career preparation. We encourage your company to participate in our Internship and Job Fairs to increase your brand awareness on campus and recruit potential employees for your open positions!

CONNECT WITH MESA WORK-BASED LEARNING:

Handshake FILL YOUR EMPLOYMENT POSITIONS:

Activate your **FREE Employer Handshake Account** at bit.ly/SDCCDHandshakeRecruiting to recruit qualified talent of over 75,000 students from each of our SDCCD community college campuses. Post open positions, hiring events, view candidates, & accept resumes all in one platform. Hire your future diverse workforce!

COLLABORATE IN CAREER EDUCATION COURSE CURRICULUM:

Our Work-Based Learning team can facilitate strategic partnerships with our world class faculty and campus stakeholders who come from diverse professional backgrounds. You may get an opportunity to discuss and assess curriculum and educational resources that correspond with your industry or organizational trends.



ALUMNI SERVICES & WAYS TO GIVE BACK:

As an alumni, you've joined a growing list of highly successful graduates who have transferred and/or continued on into successful careers. Whether you received a degree, a certificate, or only took one class, you are still considered part of the "Mesa Family", and we welcome you back.

Ways to contribute to Work-Based Learning as a Mesa alumni:

- Join our Work-Based Learning/ Employer Engagement Advisory Board
- Become a Career Partner and participate in Work-Based Learning events
- Nurture student's career exploration through various activities

OUR MISSION AND PHILOSOPHY TO SOCIAL IMPACT:

Mesa's WBL team strives to build mutually beneficial partnerships with your organization with a mission to expand the number and quality of professional learning opportunities. We are ready to partner with your company or organization and value partnerships that focus on triple bottom lines- People, Planet, Profits:

1. Provide quality jobs and internships
2. Practice active employee engagement.
3. Value and support worker voice in co-designing future of work.
4. Equity focused – ties to job quality (wages, benefits, training, job evolution)
5. Climate focused (reducing carbon footprint).

CONNECT WITH US:

www.sdmesa.edu/WBL

@SDMesaWBL



MEET THE WBL TEAM



KATLIN CHOI

Work-Based Learning Coordinator



SHAWN FAWCETT

Work-Based Learning Coordinator



PAVEL CONSUEGRA

Internship Coordinator



ERICA OLMOS

Employer Relations Liaison

www.sdmesa.edu/WBL

@SDMesaWBL | #HireAnOlympian

EMPLOYER-COLLEGE PARTNERSHIPS

DRAFT UNDER REVIEW

SAN DIEGO MESA COLLEGE
Work-Based Learning