



# CONVOCATION Celebration of Innovation

Thursday, Jan 25, 2018  
8:30am - 12:00pm

Dr. Pamela T. Luster  
President

#allin4students

SAN DIEGO  
MESA COLLEGE

# Today's Agenda

- 8:30 Welcome and Campus Updates
- 9:10 Campus Spotlight
  - \* Hispanic Serving Institution (HSI): Leticia Lopez
- 9:25 Creative Innovations
  - \* Career (Technical) Education: Danene Brown | Tina Recalde | Monica Romero
  - \* Placement Assistant: Genevieve Esguerra
  - \* Dual Enrollment: Tim McGrath
  - \* Tutoring: Mark Manasse
  - \* Foundation Mini Grants: Krista Stellmacher
  - \* Design and Discovery Showcase: Susan Lazear
- 10:00 Mesa Pathways
- 11:40 Olympian Spirit Awards
- 12:00 Closing

# Governance Spring 2018

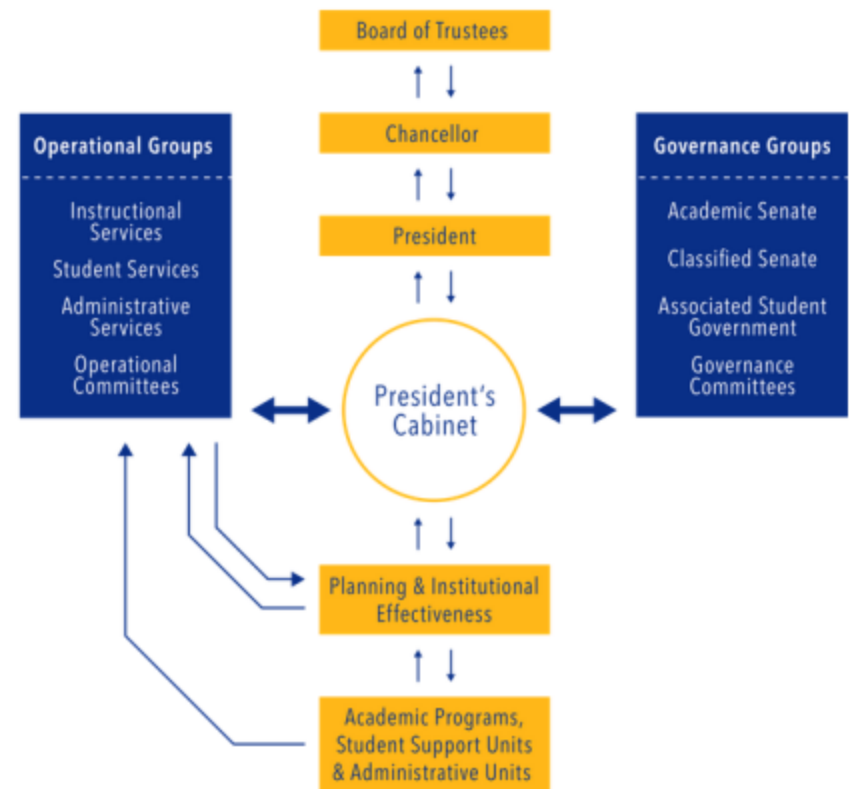
## Working Together at Mesa College

[www.sdmesa.edu/about-mesa/governance](http://www.sdmesa.edu/about-mesa/governance)

- **Kim Perigo**, President, Academic Senate
- **Trina Larson**, President, Classified Senate
- **Joe Newell**, President, Associate Students



### GOVERNANCE CHART



# Academic Senate Update

Celebration of  
Innovation

\* Kim Perigo, President,  
Academic Senate

#allin4students



# Classified Senate Update

Celebration of  
Innovation

\* Trina Larson, President,  
Classified Senate

#allin4students

# Associated Students Update

Celebration of  
Innovation

\* Joe Newell, President,  
Associated Students

#allin4students

# \*New and Promoted Faculty and Staff

Welcome to Mesa College!



#allin4students



## \* Faculty

- **Lisa Burgert**, Assistant Professor Librarian
- **Rosiangela Escamilla**, Assistant Professor English
- **Amanda Johnston**, Assistant Program Director - Physical Therapist
- **Jason Kalchik**, Assistant Professor English
- **Jesse Keller**, Assistant Professor Dramatic Arts

# \* Faculty



- **Ronmali Rodrigo**, Assistant Professor English
- **Jordan Smiley**, Assistant Professor Fashion
- **Katherine Naimark**, Assistant Professor Math
- **Christina Huynh**, Assistant Professor Math
- **Shane Briggs**, Assistant Professor Math

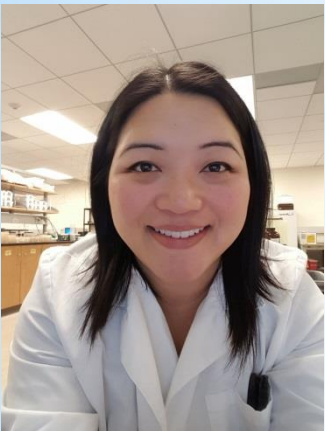




**Carlos, Pelayo**, ILT Media  
Production Technology  
Services



**Ben Sims**, Admin Tech Career  
Technical Education



**Binh Vong**, ILT Chemistry  
**Knanh Pham**, ILT Biology

Faculty

# \* Promotions and Transfers



**Jamie Arellano**, Student Services Asst,  
Counseling

**Ellen Engels**, Admin Tech, Business Office  
Support

**Giovanni Garcia**, Admin Tech, President's  
Office

**Trung Huynh**, Sr. Student Services Asst,  
Admissions

**Manuel Jacobo**, Admin Tech, DSPS

**Sahar King**, Sr. Secretary, Institutional  
Effectiveness

**Charlie Lieu**, College Technical Analyst





# \* Promotions and Transfers

**Brian Mackus, Instructional Support Supervisor**

**Rosa Mejia, Admin Tech, Business Administration**

**Paul Palomares, Network Specialist**

**Bobby Vang, Admin Tech, Business Office Support**

**Shanelle Watkins, Student Services Asst, DSPS**

**Anda McComb, Admin Tech, Institutional Effectiveness**

**Alison Mona, Sr. Secretary, Health Sciences**

# \* Student Services Updates

\* Ashanti Hands, VP of  
Student Services

#allin4students



# Student Services

Admissions  
Assessment  
Associated Students/Clubs  
AVANZA | Peer Navigator  
CalWORKs  
Career  
Counseling  
Disabled Student Programs & Services (DSPS)  
EOPS/CARE  
Evaluations  
Health Services  
Student Equity  
Financial Aid  
Outreach  
Student Affairs  
Student Development  
STAR TRIO  
Transfer  
Veterans & Records  
Vice President Student Services



#allin4students

## Special Programs

- ADVOC8
- Counseling Hot Spots
- Embedded Counseling
- Fast-Track
- First Year Experience
- International Students
- Puente
- MET
- MAAP
- Orientation
- Personal Growth
- Promise
- The Stand
- Umoja | Mesa Academy
- Veterans Resource Center



# \*SAVE THE DATE

- \* January 29- Feb. 2, 2018
- \* Tuesday, Feb. 20, 2018
- \* Friday, March 10
- \* March 19-22
- \* Friday, April 20, 2018
- \* Saturday, May 19, 2018

3pm, USD Jenny Craig Pavilion

Welcome Week

Mesa College Scholarship Applications Deadline

Jump Start Your Success

Foster Youth Awareness Week

Scholarship Banquet

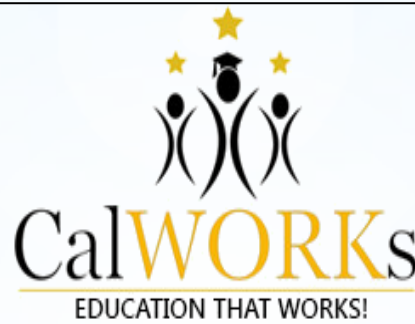
Commencement Ceremony



# \*What's Here & Now



Dreamers



CalWORKs



SD Promise

# \*What's New

- \* The Stand: Amazon Prime Wish List
- \* Counseling: Online scheduling & Online Orientation - Available in Spanish and Vietnamese
- \* Career Center
  - First Destination Survey
  - Paid Internship Pilot using the CTE Enhancement Funds
  - Work based learning experiences
- \* Basic Skills, Student Equity and Student Success and Support Integration: Planning & Survey Reports





# \*What's Next



## Launch 1 (March 2018)

College & CE Schedule  
Development  
Course Catalog  
Faculty Assignments  
Financial Aid Applications  
Conversion of student records

## Launch 2 (June 2018)

Fall 2018 Registration  
Financial Aid Disbursements  
Paying for classes  
Advisement Reports (Ed Plans)  
Student/Faculty Portals  
Categorical Programs  
Grades/Grading  
End of Term Processing  
Graduation  
MIS  
320 Reports

# \*Share our Story

## Student Services Monthly Updates

<http://www.sdmesa.edu/student-services/student-services-reports.shtml>

#allin4students

**SAN DIEGO MESA COLLEGE**

SEARCH

GIVE TO MESA

ABOUT | ACADEMICS | FINANCIAL AID | ATHLETICS | CAMPUS LIFE | STUDENT SERVICES | COLLEGE SERVICES

Home > Student Services

**STUDENT SERVICES**

**WELCOME TO MESA STUDENT SERVICES!**

Student Services is dedicated to your success. Welcome.

In Student Services, we value excellence, inclusion, and equity. Our role is to support you as you walk the path from admissions to graduation and transfer. This support can be found in our offices, including -

- Admissions, Assessment/Testing, Associated Student Government, Career, Counseling, Evaluations, Financial Aid, Outreach Student Affairs, Student Health, Transfer, Veterans and Records

Support is also found through programs for first-generation and low-income students (EOPS, CARE, and STAR) and for students with disabilities (DSPS).

Our offices are located in the Student Services Center, where we offer available computers, open study spaces, and refreshments. Come see us often. We're glad you're here.

**STUDENT SERVICES CENTER HOURS**

**SUMMER DINING HOURS**

**STUDENT SERVICES MONTHLY UPDATES**



# \*Instructional Services Update

\*Tim McGrath, VP of  
Instruction

# \* Enrollment Management Spring 2018

- \* Mesa is offering 129 more sections this semester compared to Spring 2017
- \* As a district we are offering 144 more sections this year compared to last fall
- \* Mesa is down 244 FTES from last year



# \* Enrollment Management Spring 2018



As a district we're down 472 FTES over Spring 2017

- \* Headcount is down 729 students from last year and enrollment is statistically down 3% from Spring 2017

Note:

- \* Miramar is up 1,290 students compared to last spring

# \*Enrollment Management

## Interession 2018

Mesa offered 150 sections

- City offered 72 sections
- Miramar offered 94 sections

Mesa sections were divided:

- On campus - 62 sections (41%)
- Online - 88 sections (59%)

FTES Target - 350 FTES

- 1/8/18 - 315 FTES (drop date)



# \* Administrative Services Update

\* David Fierro,  
Administrative  
Services

#allin4students



## Prop S & N Project Updates - Spring 2018

*All dates are estimates*

PROJECT	CONSTRUCTION COMPLETE	OCCUPANCY
<b>L200 / Facilities</b>	February 2018	March 2018
<b>Center for Business &amp; Technology</b>	December 2018	Jan 2019/ Mid Term
<b>I300 / Fine Arts</b>	May 2018	Aug 2018/ Mid Term
<b>Mesa Quad</b> - project in planning depended on completion of other projects		
<b>Ancillary Moves</b> - assessing and planning		



# \*What's New With MesaMoves

- ❖ Valet & Parking - first 2 weeks
- ❖ Kearny High School Parking - first 2 weeks
- ❖ Parking at Grace Brethren Church **(New)**
- ❖ Parking Spots Behind Parking Structure **(New)**
- ❖ Visit the [MesaMoves](http://www.sdmesa.edu/mesamoves/) website for all information

<http://www.sdmesa.edu/mesamoves/>

# \*Other Highlights

## New Student Printing:

<http://studentprint.sdmesa.edu:9191>

## PeopleSoft Upgrades

Business Office x2771

Business Office Support

Services x2746 or 2222

SAN DIEGO MESA COLLEGE

### New Student Printing



**No more cards!**

<http://studentprint.sdmesa.edu:9191>

Visit the LRC MT2C on 1st and 4th floor for more info.

-  1 Create Account
-  2 Transfer Funds
-  3 Printing
-  4 Add Value

# \*Campus Spotlight

Mesa College is a  
Hispanic Serving  
Institution

\*Leticia Lopez, Acting  
Program Manager



# \*Hispanic-Serving Institution (HSI)

[www.sdmesa.edu/hsi](http://www.sdmesa.edu/hsi)

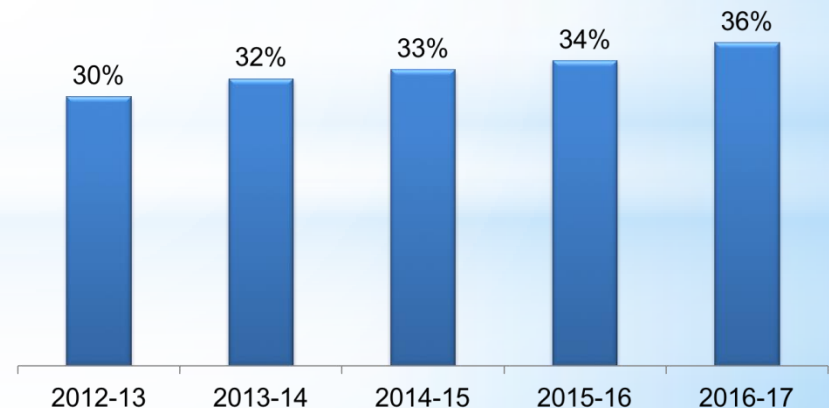
## Serving our LatinX Students with Excellence:

- Puente
- EOPS
- Chicano/Latino Heritage Celebrations
- Gracia Molina de Pick Feminist Lecture Series



### Percentage of LatinX Students Enrolled at Mesa College

*Source: SD Mesa Program Review Data*



# Hispanic-Serving Institution / Innovation

SAN DIEGO MESA COLLEGE  
Borderless Scholars

LATINX  
ALLIANCE



- Intrusive counseling
- Community building
- Cultural connection
- Support
  - Mentorship
  - Career
  - Mental Health
  - Scholarships





# SAN DIEGO MESA COLLEGE DACA Advocacy Week

October 16 - October 20

San Diego Mesa College stands committed to our Dreamers

**DACA Advocacy Week will feature the voices of our students and campus allies, information sessions for DACA and undocumented students, and ideas on how to support for our DACA students. Please join us and support the Mesa Family – all are welcome.**

- Oct. 16** Monday, October 16 • 11am – 12:30pm • AVANZA Engagement Center  
**Nuestras Voces / Our Voices - Student Panel**
- Oct. 17** Tuesday, October 17 • 10am -1pm • Student Services Building, I4-408  
**DACA Resource Fair**
- Oct. 18** Wednesday, October 18 • 11am – 12:30pm • AVANZA Engagement Center  
**Know Your Rights and DACA Advocacy Workshop.**  
**Presented by ACLU Representative and Students Without Limits**
- Oct. 19** Thursday, October 19 • 11am – 12:30pm • AVANZA Engagement Center  
**Nuestras Voces / Our Voices– Mesa Admin/Faculty/Staff Panel**



For more information, please contact Jesus Gaytan, EOPS Counselor at (619) 388-2470 or [jgaytan@sdccd.edu](mailto:jgaytan@sdccd.edu).  
Requests for disability related accommodations should be made no later than 5 (five) working days prior to the event.

## HSI Community & National Outreach

- DACA / Dreamers
- Noches de Familia
- Hispanic Heritage Month
- Raza Grad
- Hispanic Association of Colleges & Universities (HACU)
- Alliance of Hispanic-Serving Institution Educators (AHSIE)



# HSI Grant Programs : Title V, Title III

## Title V: Proyecto Éxito (2014-2019)

- \* CRUISE & Peer Navigator Program
- \* Mathletics
- \* Classroom Tutoring
- \* AVANZA Student Engagement Center
- \* HSI Professional Learning / Course Redesign



## Title III: STEM Conexiones (2016-2021)

- \* STEM Counseling
- \* STEM Pathways
- \* STEM Center
- \* Innovation Research Lab (New!)
- \* Faculty-Student Mentoring
- \* STEM Professional Learning / Workshops
- \* STEM Scholars (New! Scholarships+ field trips)





# \*Creative Innovations

- \* Career (Technical) Education: Danene Brown | Tina Recalde | Monica Romero
- \* Placement Assistant: Genevieve Esguerra
- \* Dual Enrollment: Tim McGrath
- \* Tutoring: Mark Manasse
- \* Foundation Mini Grants: Krista Stellmacher
- \* Design and Discovery Showcase: Susan Lazear

#allin4students

# \* Career (Technical) Education

\* Danene Brown  
Tina Recalde  
Monica Romero

#allin4students

# \*Career Education

How much do you know about C(T)E?

We will be playing a game in groups at each table.

Choose someone at your table to be team leader and pull up [www.kahoot.it](http://www.kahoot.it) on their mobile device.

## \*Let's Kahoot.it !


# \*Placement Assistant

\* Genevieve Esguerra,  
Outreach

#allin4students



# Mesa Placement Assistant



The banner features the word "Mesa" in a blue script font, followed by "PLACEMENT ASSISTANT" in a grey sans-serif font. To the right is a photograph of a modern building with a glass facade and a group of people standing in front of it.

Start here.

First Name\*

Last Name\*

Email\*

CSID\*

Re-enter CSID\*

[Using the new Placement Assistant](#)

# \*Dual Enrollment

\*Tim McGrath, VP of  
Instruction

#allin4students

# \* Mesa's Dual Enrollment Program 2015/16 - 2016/17

- \* Created through an Equity Lens in a partnership with San Diego Unified and based on AB 288
- \* Based on preparing under represented high school students for college success through getting them through Transfer level Math and English before High School graduation
- \* Program benefits both Legacy and Non-Legacy students
- \* Classes are taught at Mesa Feeder High Schools



# \* Dual Enrollment Program - Schedule

## High School Schedule

### \* Junior Year

- \* Fall: Math 96 - Intermediate Algebra
- \* Spring: Math 116 College Algebra or Math 119 Statistics

### \* Senior Year

- \* Fall: English 47A - Accelerated Reading, Writing and Reasoning
- \* Spring: English 101 - Reading/Composition





# \* Dual Enrollment Program - Partners

## Academic Year 2017 - 18

- James Madison - 9 Sections
- Kearny - 24 Sections
- Clairemont - 22 Sections
- Patrick Henry - 14 Sections
- University City - 19 Sections
- La Jolla - 24 Sections
- Point Loma - 20 Sections
- Morse - 6 Sections

Total = 138 sections



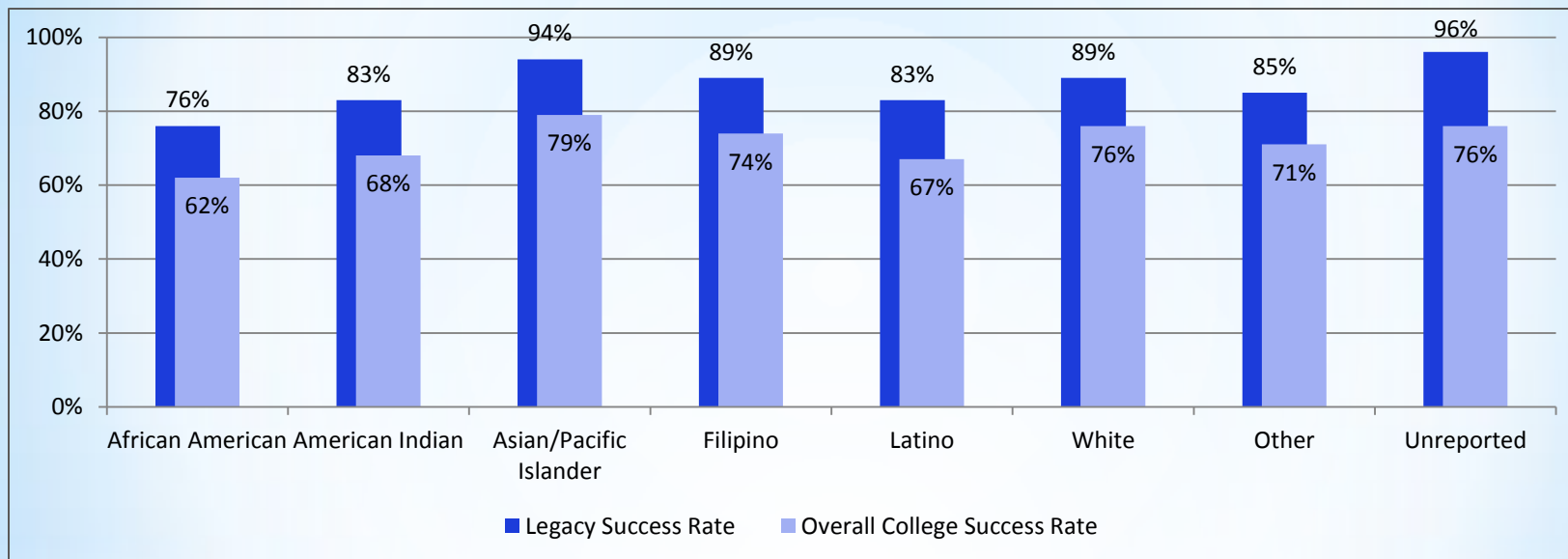
# \*Enrollments and Outcomes by Term

Term	Enrollment	Retention Counts	Retention Rate	Success Counts	Success Rate	Program GPA
Fall 15	219	211	96%	177	81%	2.50
Spring 16	131	123	94%	110	84%	2.93
Summer 16	70	70	100%	63	90%	2.89
Fall 16	750	715	95%	640	85%	2.87
Spring 17	491	480	98%	444	90%	3.13
Total	1,661	1,599	96%	1,434	86%	2.89

**27% First Generation**

**37% Undecided on Ed. Goal**

# \* Success by Ethnicity

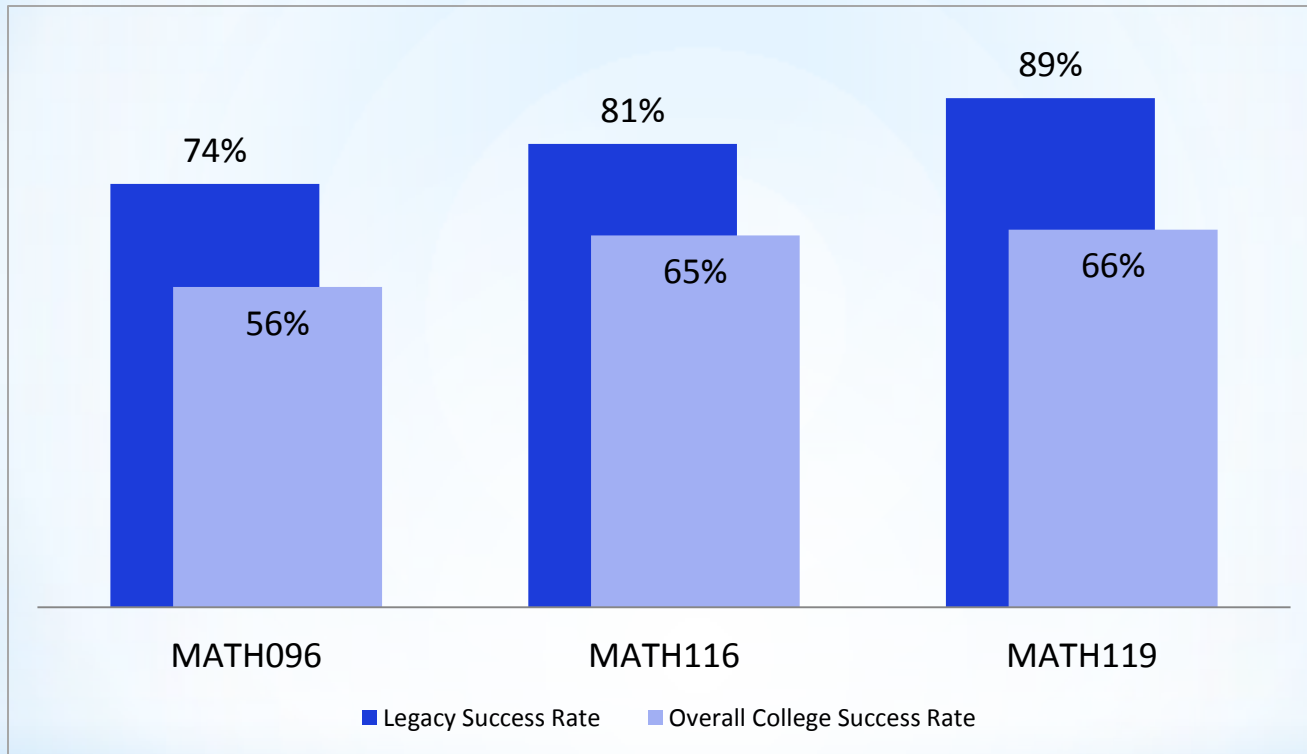


Ethnicity	Enrollment	% of Enrollment	Success Rate	Program GPA
African American	80	5%	76%	2.43
American Indian	6	0%	83%	2.95
Asian/Pacific Islander	223	13%	94%	3.26
Filipino	53	3%	89%	2.94
Latino	728	44%	83%	2.69
White	408	25%	89%	3.10
Other	135	8%	85%	2.94
Unreported	28	2%	96%	3.42
Total	1,661	100%	86%	2.89

Source: SDCCD Information System; 2017 Legacy Outcomes and Student Characteristics Report

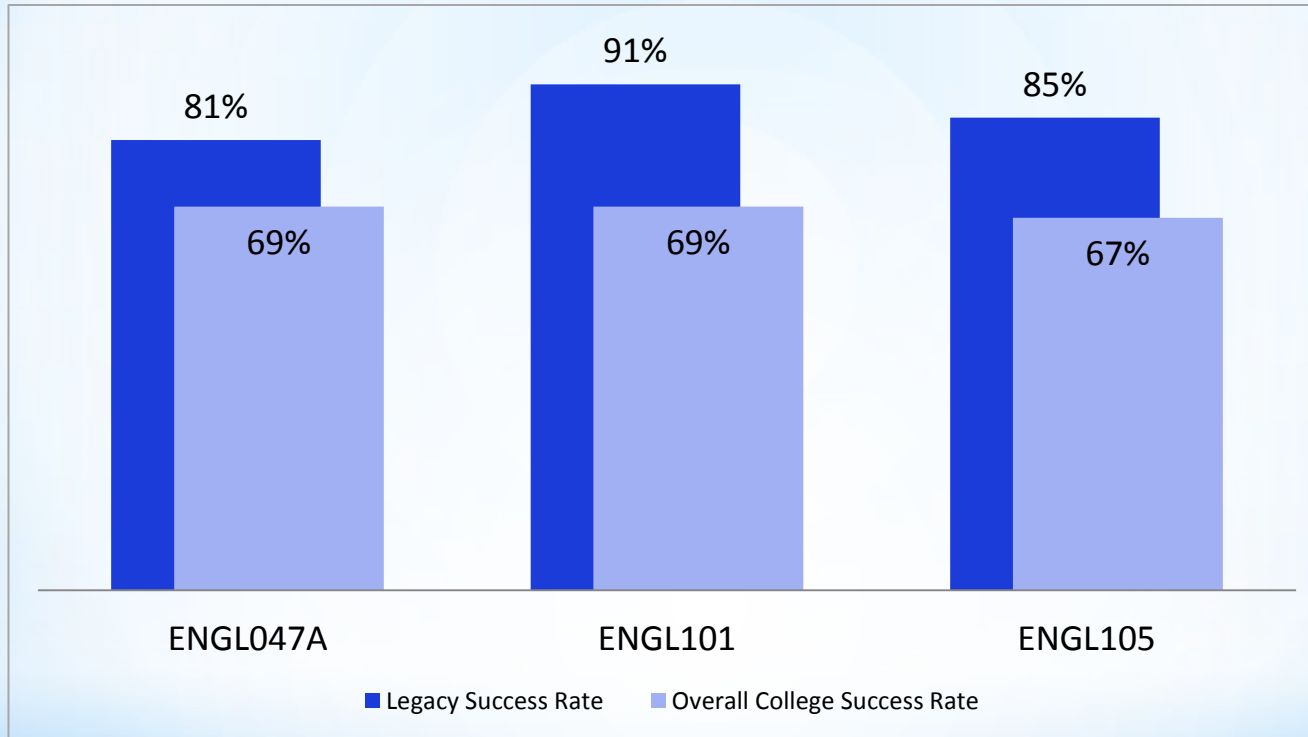
\*Overall college success rate include Fall 15-Spring 17

# \* Math Success



Course	Enrollment	Success Rate
MATH096	349	74%
MATH116	47	81%
MATH119	141	89%

# \*English Success



Course	Enrollment	Success Rate
ENGL047A	274	81%
ENGL101	241	91%
ENGL105	20	85%



# \*Tutoring Services

\*Mark Manasse,  
Tutoring

#allin4students



## The Professionalization of Tutoring An MT2C Overview

**MARK MANASSE, PH.D.**  
**INSTRUCTIONAL LEARNING ASSISTANCE COORDINATOR**  
**3CSN'S LEARNING ASSISTANCE PROJECT (LAP) CO-COORDINATOR**



# Our Goal

To Become *the* Model Tutoring Program in California



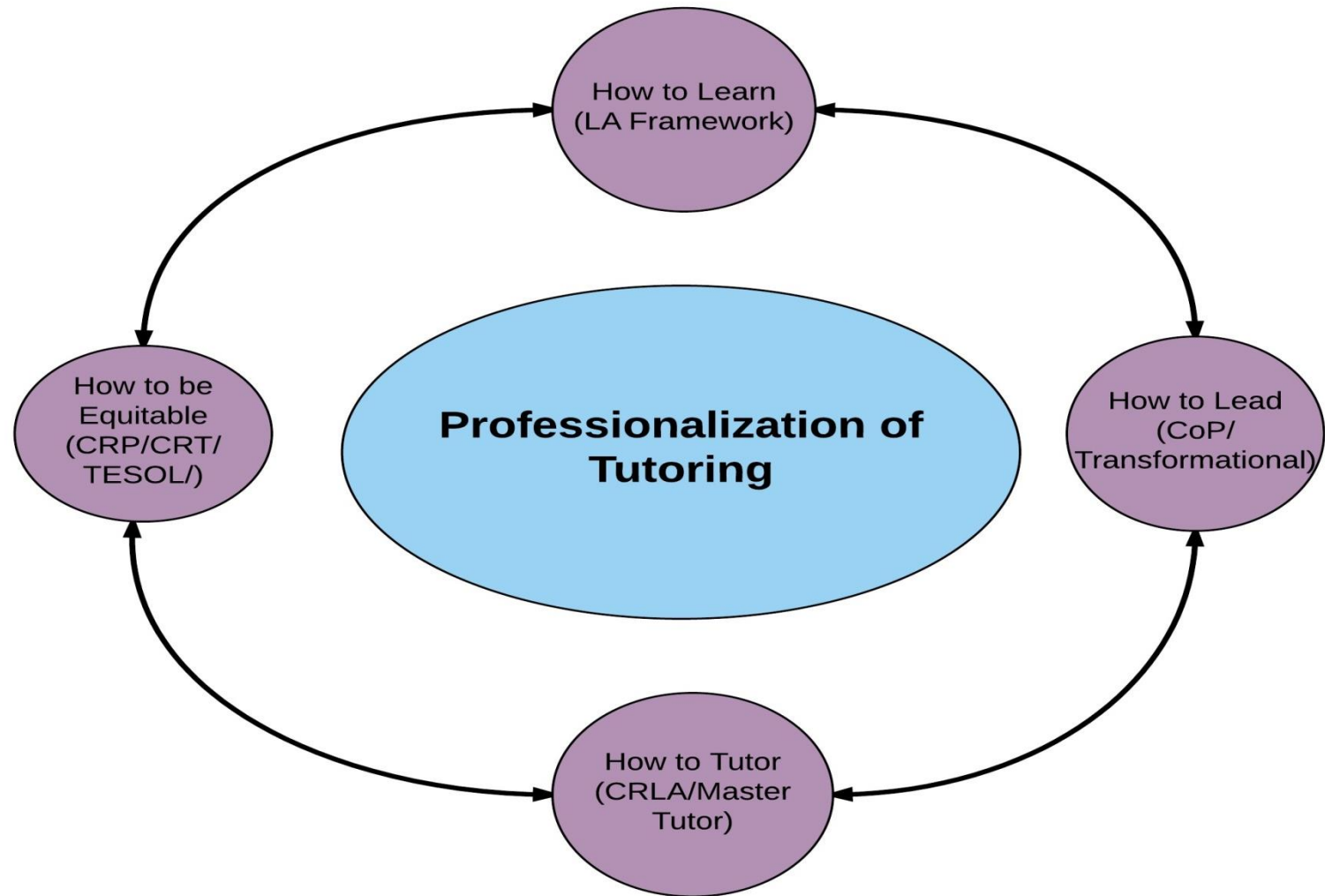
# Vision and Principles

Vision: Professionalization of Tutoring  
(i.e. Tutors are educational professionals)

## Principles:

1. Training should be rigorous, practical, and sustainable. (Sheets, 2012)
2. Instructors and tutors have different yet equitable roles. (Dawson, et al, 2014)
3. Tutoring is about student empowerment. (Paulson, 2012)
4. Tutoring contributes to student success. [California Ed Code, §88810(a)(5)]

# Defining the Educational Professional





# Tutoring Cycle



# Affective Domain

- Creating safety
- Involving learners
- Sharing
- Sharing and solving
- Noticing and appropriating others' ways of learning

- Developing:

- Assessing performance and setting goals

## Metacognitive Conversations

### Cognitive Dimension

- Getting "the big picture"
- Breaking it down
- Monitoring
- Using
- Setting learning processes

### Knowledge-Building Dimension

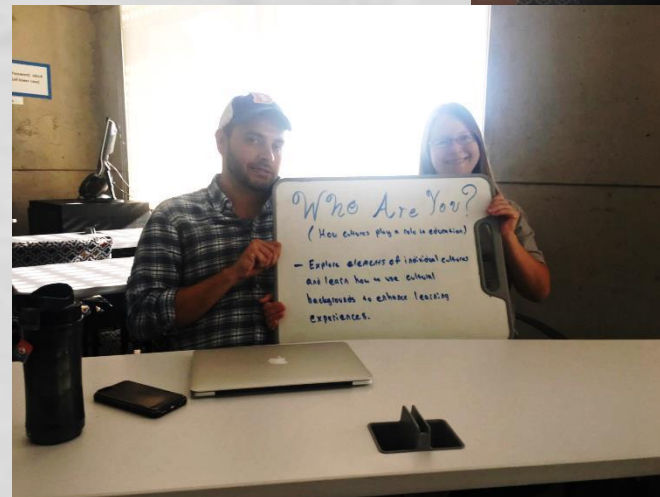
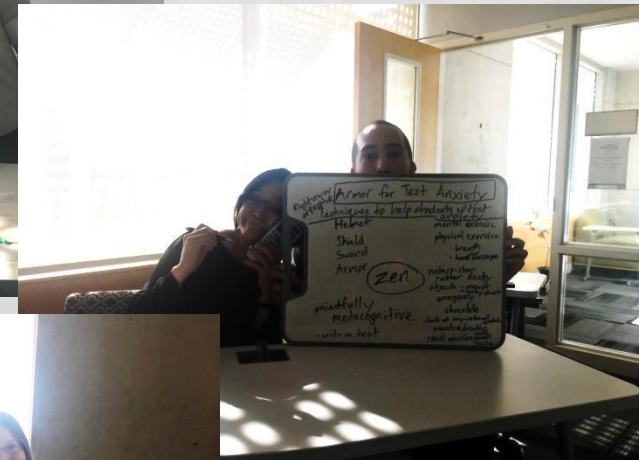
- Mobilizing/building knowledge structures/schemata

# Cognitive Domain

- Knowledge and use of text structures
- Discipline- and discourse-specific knowledge

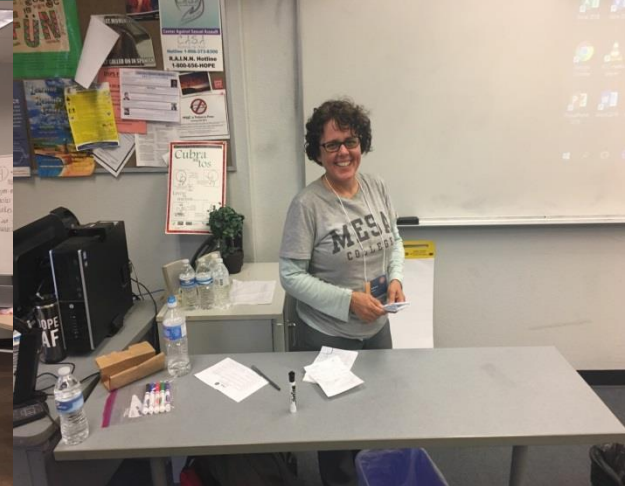
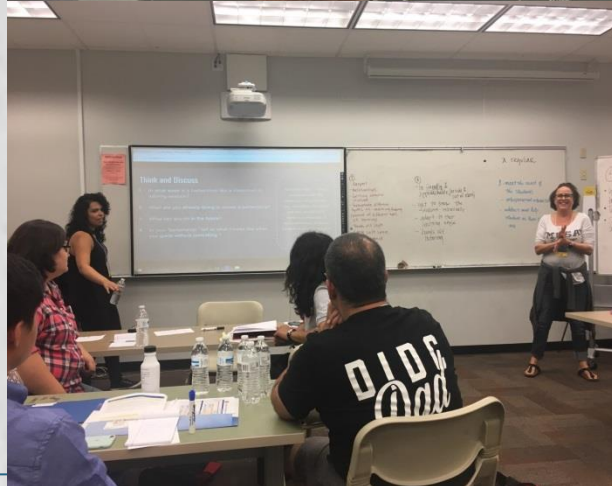
# Tutors Mentoring Tutors

- James and Becky: Using Mindfulness and Empathy to Meet Students Where They Are
- Niko and Meiko: Armor for Test Anxiety
- Kenny and Amanda: Who Are You? How Culture Plays a Role in Education



# Tutors, Faculty, and Classified Present Together at Conferences

- Jose and Ramzy: A Growth Mindset Through an Interdisciplinary Lens
- Niko and Gideon: Code Switching and Linguistic Bias
- Mariam and Nicole: A Little off the Top: A Barbershop Model for [Embedded] Programs
- Becky: Working with Nontraditional Student Tutees: Uncovering Assumptions.





# \* San Diego Mesa College Foundation

\* Krista Stellmacher,  
Director of Resource  
Development

#allin4students



# \* San Diego Mesa College Foundation

\* *Dream a Little Dream...*



*...innovation*

# \* What is the Foundation?

- \* Separate nonprofit, Board of Directors
- \* Founded in 1976
- \* Purpose:
  - \* Provide opportunities to invest
  - \* Garner support for Mesa & Mesa students



# \* About the Foundation

## WHAT DO WE DO?



### INVEST IN BRIGHT FUTURES

*Scholarships for  
Students*



### FUND INNOVATION

*Mini-Grants &  
donations for staff  
& faculty*



### ENRICH THROUGH THE ARTS

*World Cultures Art  
Collection*



### PRESERVE OPPORTUNITY

*Emergency assistance,  
basic needs, &  
financial well-being for  
students*

**BECAUSE EDUCATION MATTERS.**

# \* Foundation Mini-Grants

*Fund innovative approaches to student success*

- \* Up to \$1,500
- \* Offered by San Diego Mesa College Foundation
- \* Launched in 2014
- \* About 14 projects per academic year
- \* To date:
  - \* Nearly \$50,000 awarded
  - \* About 50 different projects
  - \* Variety of disciplines



# \* Foundation Mini-Grants

*Useful Information alert!!!*



**PAY  
ATTENTION**

- > *Mini-Grant Application period are coming up!*
- > *Next academic year, they will be submitted annually!*



# \* Mini-Grant: Oceanography Vessel

## *Oceanography Trip - Prof. Paul Sykes*

- \* Long Beach-based Yellowfin - 30 Students per trip
- \* Field research: pH samples, marine organisms
- \* Learning adventure



# \* Mini-Grant: Financial Literacy

## *Financial Literacy Series - Prof. Howard Eskew*

- \* Real-World Scenarios
- \* External Partners
- \* Learning Beyond the Classroom
- \* Life Skills
- \* Setting Students up for Success



# \* Mini-Grant: STEM Lecture Series

## *STEM Lecture Series - Prof. Don Barrie*

- \* Mini-Grant funded initiative in Fall 2014
- \* *Growth* - Has served over 1,100 students to date and counting
- \* Standing room only!
- \* Additional private funding!

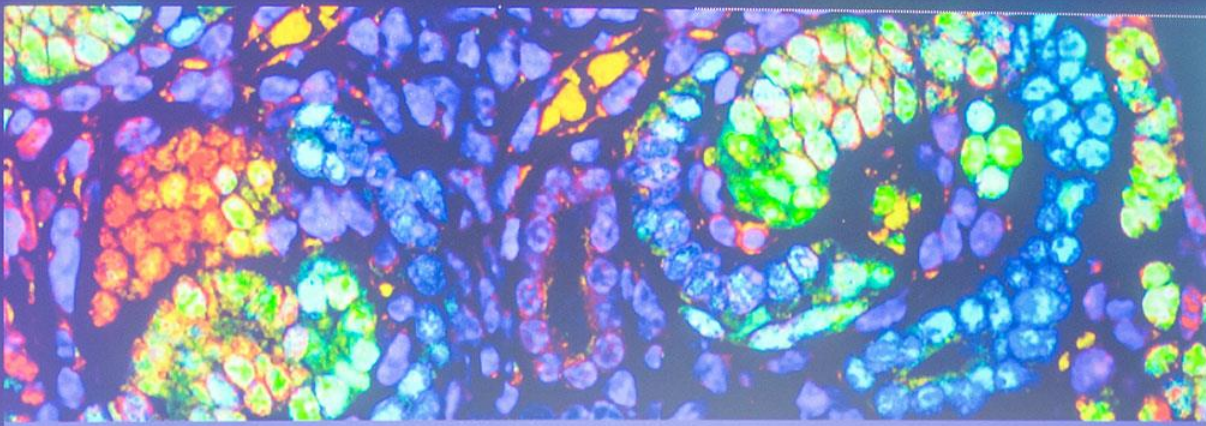




# \*Mesa Fashion Program

\*Design and Discovery  
Collaboration between  
Mesa Fashion Program and  
the Salk Institute

\*Susan Lazear,  
Professor



SAN DIEGO  
MESA COLLEGE

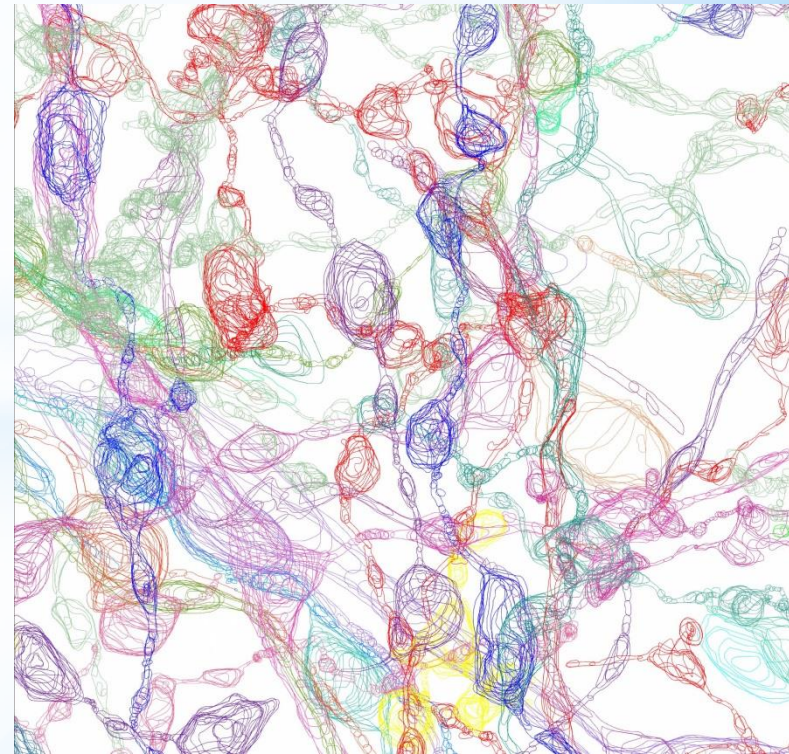
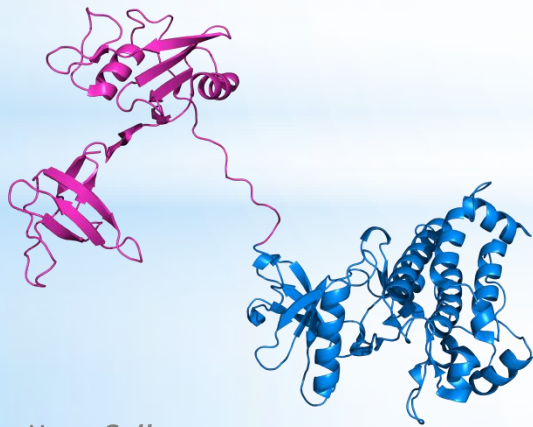
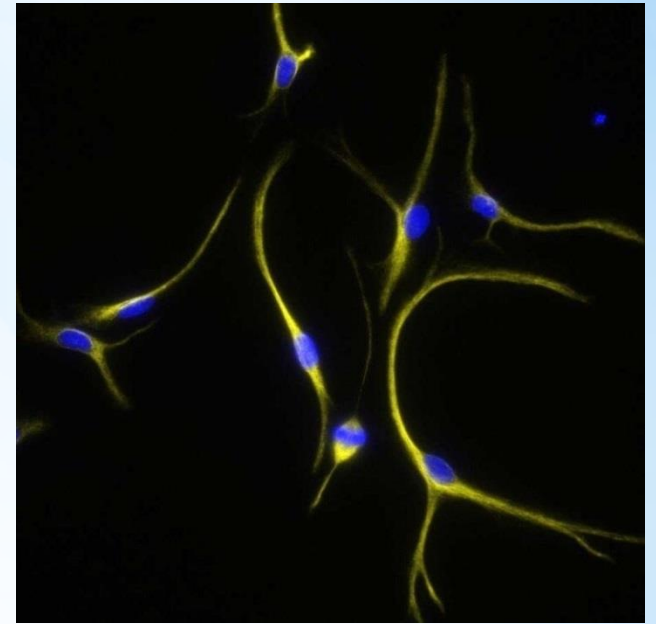
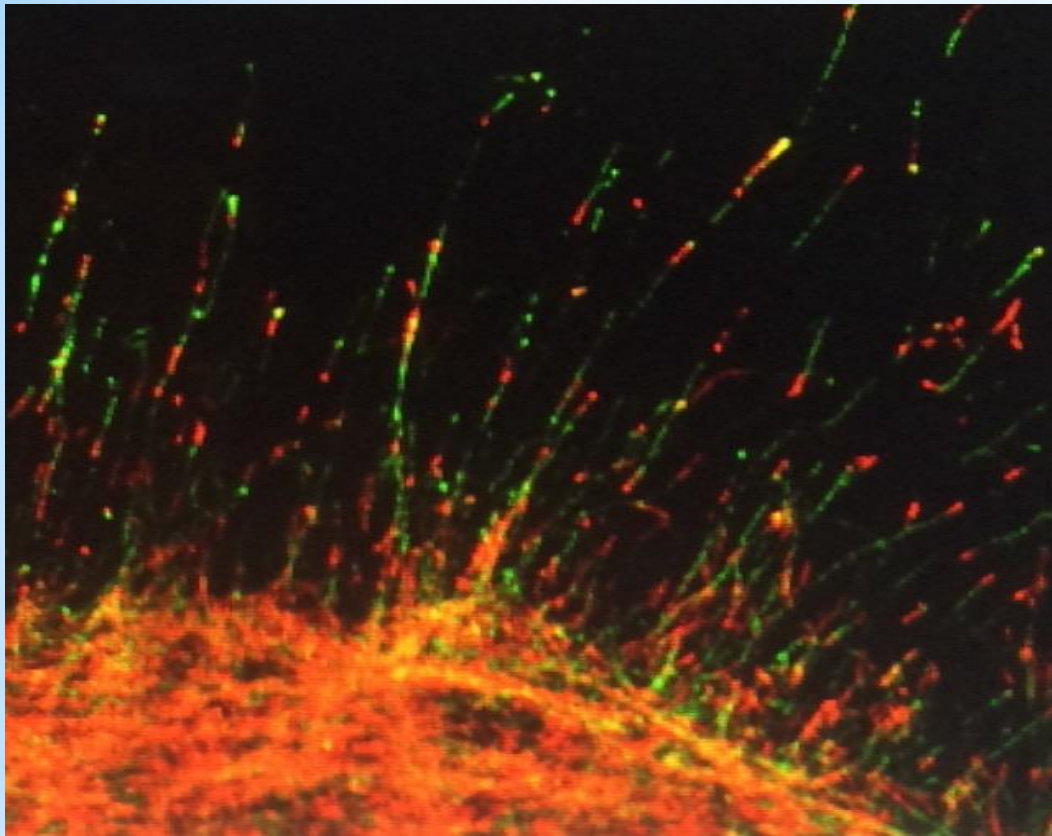


salk. WOMEN & SCIENCE

DESIGN AND  
DISCOVERY  
FASHION  
SHOWCASE









Christiann Moore and Elana Blanco-Suarez  
Astrocyte brain cells



Juliet Sailo and Quan Zhu  
How genetic mutations lead to cancer  
formation

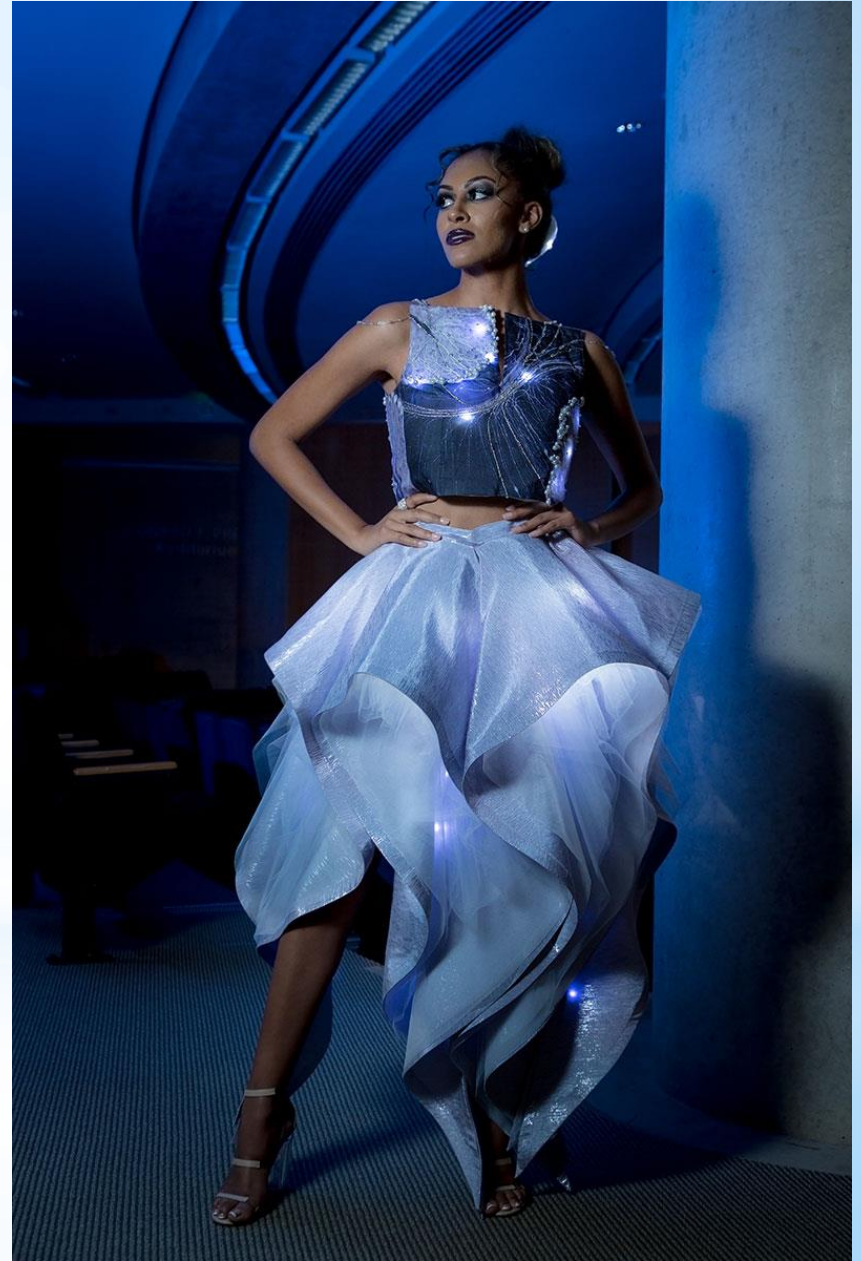




Marty Ornish and Cindy Lui  
How eye cells communicate



Rachel Merrill and Hermina Nedelescu  
Functionality of the brain





Tammie Pontsler and Pam Maher  
Neurological diseases associated with aging



Lauren Jackson and Bettina Lehman  
Proteins and stress



# Lina Mills and Alexandria Palaferrie Schieber

How bacteria in our gut can benefit and protect us





Nada Zein and Mako Yamamoto  
Editing DNA to extend lifespan



Jessica Holland and Krishna Vadodaria  
Study of neuropsychiatric disorders



Anna Walden and Amy Rommel  
Glioblastomas, a form of brain cancer



San D

Jenivive Bernbeck and Kayla Chase  
Genetic variations as it relates to cancer





**Kara Rieckstins and Jared Smith**  
How repeated drug exposure changes the brain



**Humberto Buisan and Carlos Perez-Garcia**  
Study of the autism-related gene MDGA1



# \* Mesa Pathways

\* Ashanti Hands  
Bridget Herrin  
Janue Johnson

#allin4students

# Mesa Pathways

Spring 2018 Convocation

#allin4students

Visit us at <http://bit.ly/mesapathways>

Ashanti Hands, Vice President Student Services  
Bridget Herrin, Associate Dean, Research and Planning  
Janue Johnson, Professional Learning Coordinator  
Katie Palacios, Instructional Designer



# About Guided Pathways

**The Guided Pathways framework creates a highly structured approach to student success that:**



Provides all students with a set of clear course-taking patterns that promotes better enrollment decisions and prepares students for future success.



Integrates support services in ways that make it easier for students to get the help they need during every step of their community college experience.

# **Guided Pathways Depends on US.**

## **Guided Pathways is not a “one-size-fits-all” initiative...**

- The enormity and diversity of the California Community Colleges system requires that each college take a customized, self-guided approach.
- Guided Pathways is an opportunity for our college to set our own goals and determine our best path to success.

# Four Pillars of Guided Pathways

## Clarify the Path



Create Clear  
Curricular  
Pathways to  
Employment  
and Further  
Education

## Enter the Path



Help  
Students  
Choose and  
Enter Their  
Pathway

## Stay on the Path



Help  
Students  
Stay on  
Their Path

## Ensure Learning



Follow  
Through, and  
Ensure that  
Better Practices  
are Providing  
Improved  
Student Results.

# Key Elements of Guided Pathways



# Gearing Up for Implementation



**IEPI  
Workshop**



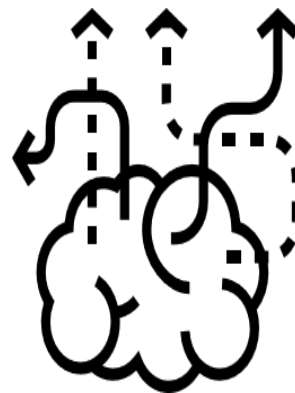
**October 30, 2017**



**Self-  
Assessment**

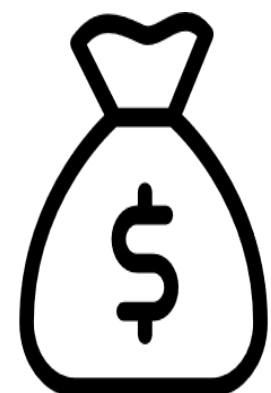


**December 23, 2017**



**Multi-Year  
Work Plan**

**March 30, 2018**



**Funding  
Allocation**

**April 30, 2018**





# Workshop & Self Assessment Phase



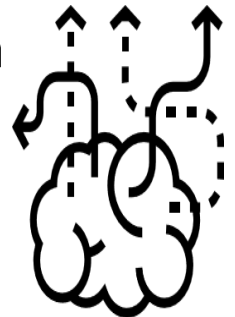
1. Targeted feedback (October 5-31)
  - Faculty Chairs
  - Committee leaders
  - Program Directors/Managers
  - Operational staff
  - Administrators
2. Open Forum (November 7)
3. Online review and public input (November 3-19)
4. President's Cabinet Retreat (November 14)
5. Planning & Institutional Effectiveness (November 18)
6. Academic Senate (December 11)
7. Classified Senate (December 7)
8. ASG (December 6)
9. Present to P-Cab for final review (December 5)
10. Submit to District for final signature (December 15)
11. Submitted to State Chancellor's Office (December 23)

# Guided Pathways Self-Assessment

		Scale of Adoption			
Key Element		Pre-Adoption	Early Adoption	In Progress	Full Scale
Inquiry	1. Cross-Functional Inquiry		X		
	2. Shared Metrics	X			
	3. Integrated Planning	X			
Design	4. Inclusive Decision-Making Structures	X			
	5. Intersegmental Alignment		X		
	6. Guided Major and Career Exploration Opportunities	X			
	7. Improved Basic Skills			X	
	8. Clear Program Requirements		X		
Implementation	9. Proactive and Integrated Academic and Student Supports	X			
	10. Integrated Technology Infrastructure		X		
	11. Strategic Professional Development		X		
	12. Aligned Learning Outcomes		X		
	13. Assessing and Documenting Learning		X		
	14. Applied Learning Opportunities	X			
Overall Self-Assessment		X			

# Multi-Year Work Plan

- A template to outline next steps to advance toward or maintain full-scale adoption of each of the 14 Self Assessment elements
- Mirrors the Self-Assessment
- Phase I:
  - Spring 2018 – Summer 2019
  - Only addresses areas with planned activities
  - May changed as implementation efforts evolve
  - Plans should be developed by a cross-functional team



# Multi-Year Development Phase

1. Call for Mesa Pathways Planning Taskforce (MPPT) Appointees (Dec. 2017)
2. Formation of Mesa Pathways Planning Taskforce (Jan. 2018)

<u>Faculty</u>	<u>Classified Professionals</u>	<u>Administrators</u>	<u>Students</u>
Kim Perigo	Trina Larson	Ashanti Hands	Eduardo Mancado
Manuel Velez	Yolanda Catano	Tina Recalde	Emilio Carranza-Davis
Cynthia Rico	Hai Hoang	Leslie Shimazaki	Sumaya Ali (Alt.)
Mark Manasse	Olivia Picolla		
Howard Eskew, Jr.			
Staff to the Committee: Bridget Herrin			

3. Meeting Schedule (Jan. – March 2018)

First Meeting	Week of Jan 29-Feb 2
Project meetings, communication, plan writing	Feb 2-March 16
Presentation to President's Cabinet	March 20 <sup>th</sup>
Submit Plan	March 30 <sup>th</sup>



# Prioritization Activity

## Objective

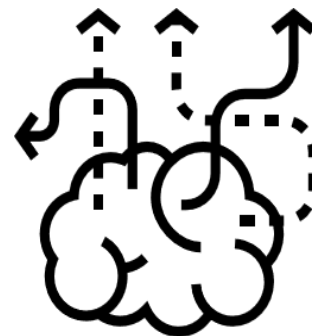
To collaboratively prioritize action items that can be used to inform the work of the Mesa Pathways Planning Taskforce



# Prioritization Activity

## At your table

1. Key elements index cards
2. Tape
3. Key Elements in the Mesa Pathways Self-Assessment and Panning Tool
4. Prioritization Grid



# Prioritization Activity

## Instructions

1. Identify your table's "Mobile Reporter"
  1. Login to PollEv.com/mesaloft123
2. You will receive a prompt for each of the 14 Key Elements
3. Your table will have 3 minutes to rate each element in terms of
  - Impact (1=Low, 4=High)
  - Do-ability (1=Hard, 4=Easy)
4. Tape the card on matrix
5. Input your response into PollEv

### **Note:**

- Limit debate by driving for quick consensus
- All ratings are relative not absolute

**Let's Get Started**

# Questions?

#allin4students

<http://bit.ly/mesapathways>

# \*Closing and Recognition

\*Dr. Pamela Luster

#allin4students



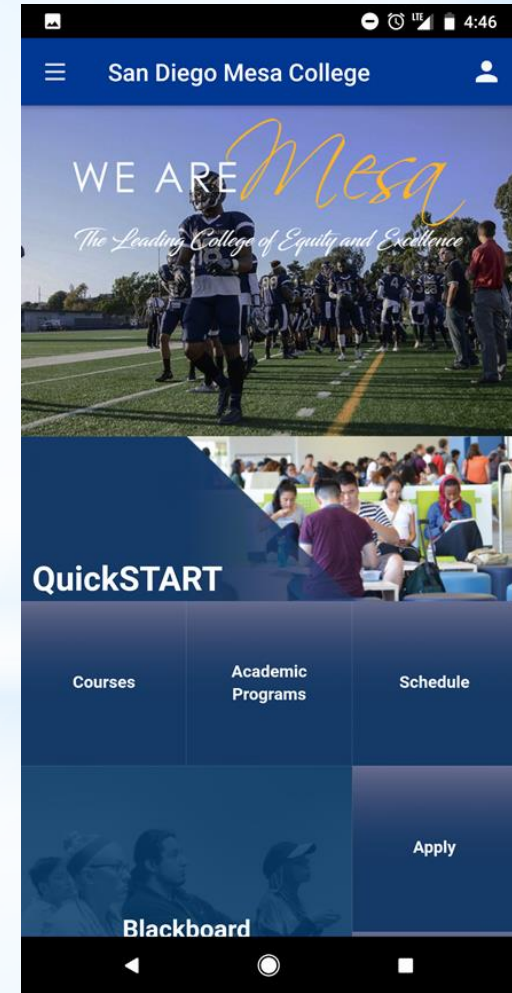
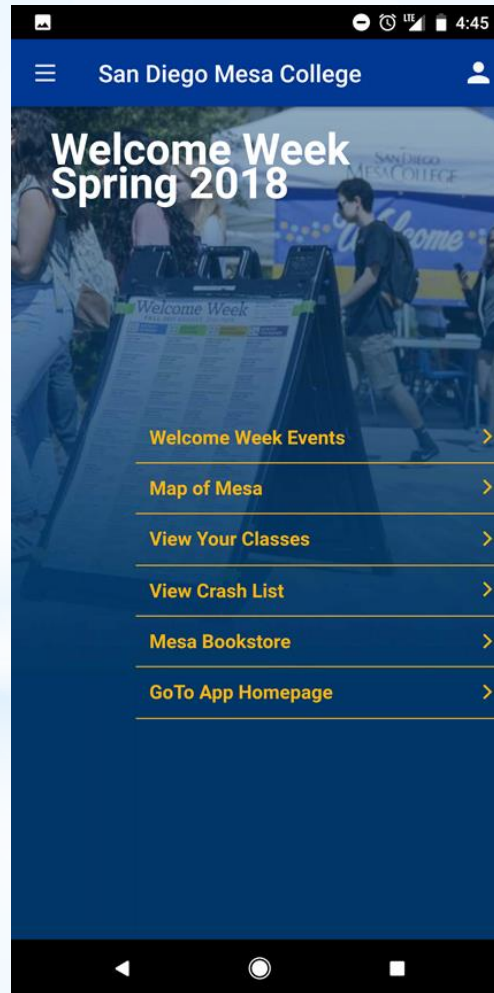
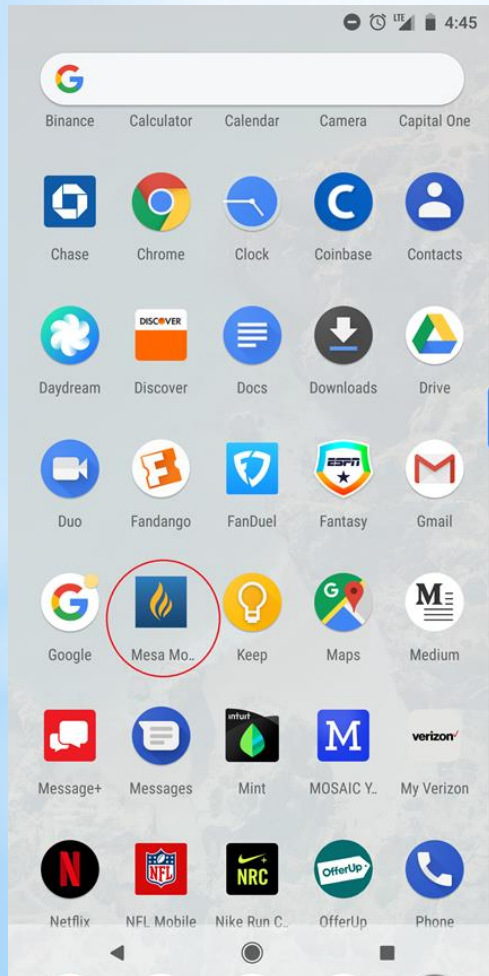
# \* Health Information Management (HIM) Bachelor of Science degree

- \* In March 2015, Mesa College was approved to offer an HIM Bachelor of Science degree
- \* One of only fifteen community colleges
- \* HIM prepares students to work at a management level in settings including acute and subacute hospitals, outpatient clinics, government agencies, and electronic health records industry vendors
- \* Mesa will have its first graduating class in 2018



# \*Debut of “iMesa Mobile”

Replaces the iMesa app - Upgraded design and functionality





# \*Mesa College on Social Media

[www.sdmesa.edu](http://www.sdmesa.edu)



/sandiegomesacollege



sdmesacollege

#SDMesaCollege

#WeAreMesa

#allin4students



# \* 2018 Distinguished Alumni Award Call for Nominations



## CALL FOR NOMINATIONS: DISTINGUISHED ALUMNI AWARD



Nominations are now being accepted for the **2018 Mesa College Distinguished Alumni Award**. The award program was established in 2011 to recognize former students who have made significant contributions to society, and whose accomplishments, affiliations, and careers have honored the legacy of academic excellence at San Diego Mesa College.

The 2018 award recipient will be announced in March and conferred at the college commencement ceremony scheduled for **Saturday, May 19**. Anyone in the greater community is encouraged to submit a nomination.

**Nominations are due no later than FEBRUARY 20, 2018.** For an application, click on the forms buttons at left. Anyone in the greater community is encouraged to submit a nomination.

<http://www.sdmesa.edu/alumni>



# \*Upcoming Events

- \* Jan 29- Feb. 2 Welcome Week
- \* Thurs, Feb 1 Rosa Parks Birthday and Libation
- \* February Black History Month
- \* March Women's History Month
- \* Fri, March 10 Jump Start Your Success
- \* Sat, April 14 Canyon Day
- \* Fri, April 20 Scholarship Awards Ceremony
- \* Sat, May 19 Commencement Ceremony  
3:00pm, University of San Diego (USD), Jenny Craig Pavilion





# \*Olympian Spirit Awards

#allin4students

\*Pam Luster  
Kim Perigo  
Trina Larson

 Thank you  
 and have a great  
semester!

#allin4students