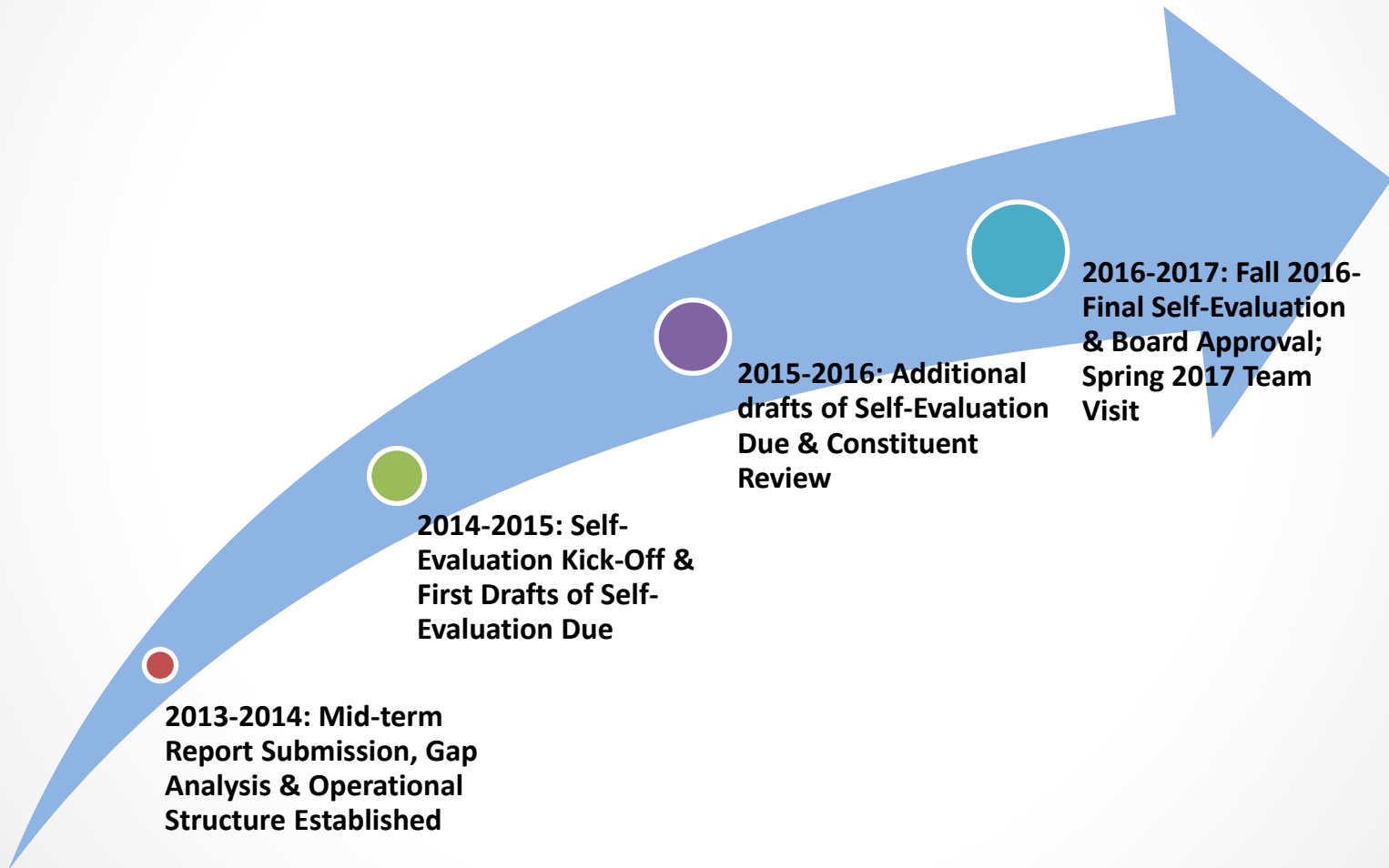


Mesa College Accreditation: Telling Our Story

President's Cabinet Retreat

April 29, 2016

Current Timeline





2015-2016 Focus

- Fall 2015
 - Constituent review of draft Self-Evaluation
 - Online Feedback System
- Spring 2016
 - Final rough draft of Self-Evaluation to be completed
 - **Continued campus engagement and feedback**
- Summer 2016
 - Incorporate feedback into final draft



2016-2017 Focus

- Fall 2016
 - Final draft vetted
 - Approval by Board (October)
- Spring 2017
 - Final preparation for visit
 - Site visit March 13th – 16th
 - **March 17th Celebrate!!!**

Test Your Accreditation Knowledge

Directions

1. Questions will be displayed on screen
2. Read the question
3. Select the card that matches your response
A = Blue B = Green C = Pink D = Purple
T = Yellow F = White
4. Raise your card to show your response

Question 1

True or False: We have filed a Substantive Change Report for Distance Education.

TRUE

Question 2

True or False: Mesa College's new Health Information Management Baccalaureate Degree is exempt from this accreditation visit.

FALSE

Question 3

When does our Self Evaluation go to the Board of Trustees for approval?

A. January

B. December

C. October

D. Doesn't have to go to the board

C. October

Question 4

When will the accreditation team visit Mesa College?

- A. December 5th – 8th 2016
- B. March 13th – 16th, 2017
- C. January 2nd – 5th, 2017
- D. April 3rd – 6th, 2017

B. March 13th - 16th, 2017

Question 5

True or False: The accreditation visiting team will only want to meet with the administration and leadership of the college.

FALSE

The visiting team will want to meet with all constituent groups – students, staff, faculty, and administration.

Question 6

True or False: On the last day of the accreditation visit, the team will hold a closed session with the President.

FALSE

On the last day, the visiting team will hold an OPEN session to present their commendations and recommendations.

Question 7

Current writing sessions for our Self Evaluation take place on what day and time?

- A. We don't have any writing sessions
- B. Tuesdays at 1pm
- C. Fridays at 9am
- D. Thursdays at 2pm

D. Thursdays at 2pm

Question 8

What is your role with regard to the Self Evaluation?

- A. None, I'm not on the Accreditation Committee
- B. It is the Administration's responsibility
- C. I will contribute if asked
- D. I want to help tell Mesa's story!

D. I want to help tell Mesa's story

Question 9

How does the College's mission statement guide/inform the strategic goals for continuous quality improvement?

- A. No connection; it's just for advertising
- B. Our goals help us meet our mission
- C. I don't know; I'm just here to teach
- D. We have strategic goals???

B. Our goals help us meet our mission

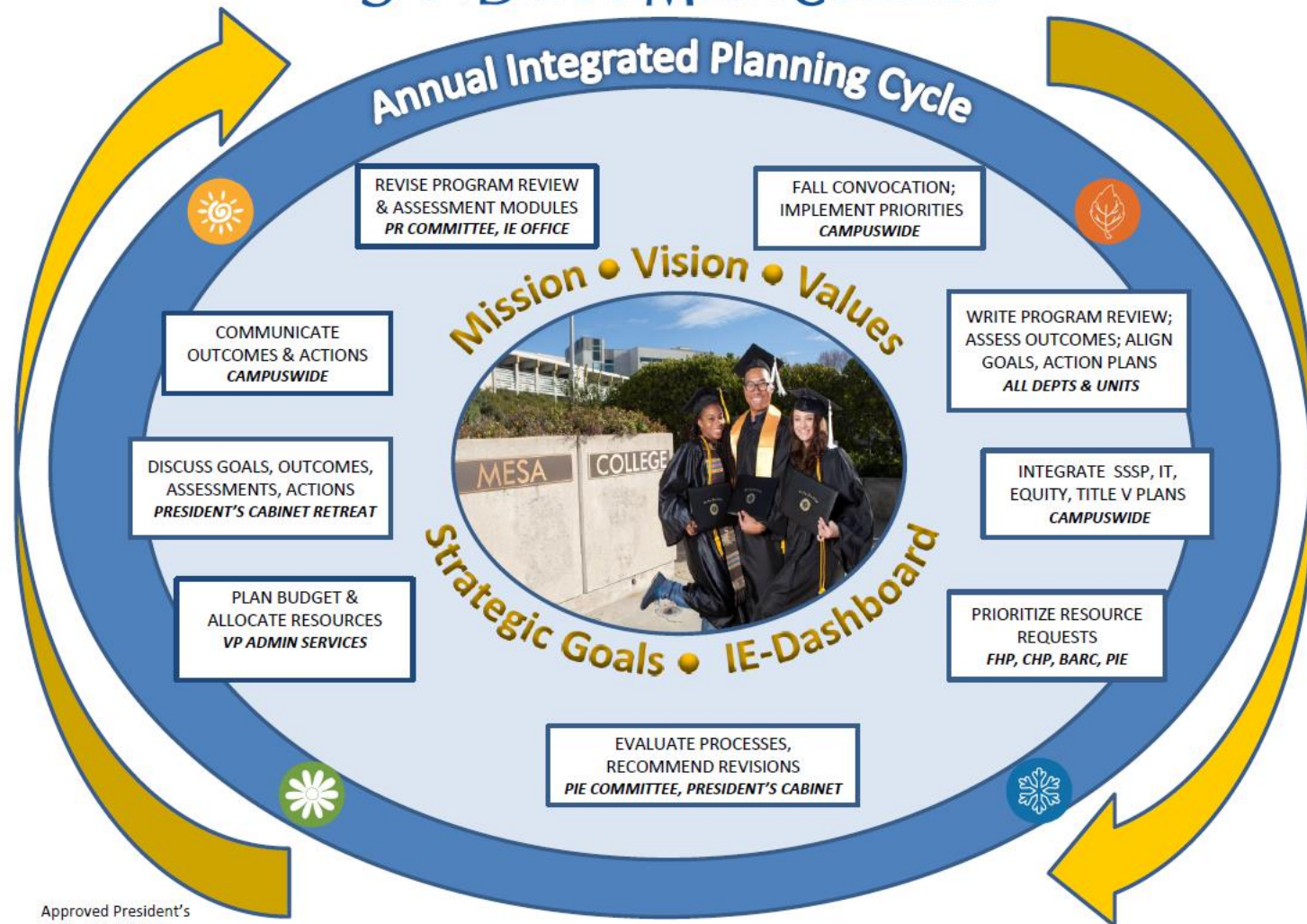
San Diego Mesa College empowers our diverse student body to reach their educational goals and shape the future. As a comprehensive community college committed to access and success, we promote student learning and achievement leading to degrees and certificates in support of transfer education and workforce training, and lifelong learning opportunities. Faculty and staff collaborate with our students to foster scholarship, leadership, and responsibility to effect positive change within our community.

Question 10

True or False: San Diego Mesa College has a clearly defined integrated planning cycle.

TRUE

SAN DIEGO MESA COLLEGE



How did you do?

The Self Evaluation is truly OUR document. We need everyone's input. It is our opportunity to share all of the great things we do.