

# Students' Needs, Mesa's Promise

CONVOCATION FALL 2018

Thursday, August 16, 2018

8:30 a.m. – 12:00 p.m.

Mesa Gymnasium



**Dr. Pamela T. Luster, President**

**SAN DIEGO  
MESA COLLEGE**



(Video)

SAN DIEGO  
MESA COLLEGE

# Welcome!



## **Mesa's Executive Leadership Team**

**Pamela Luster, *President***

**Leslie I. Shimazaki, *Interim Vice President, Instruction***

**Ashanti Hands, *Vice President, Student Services***

**Lorenze Legaspi, *Vice President, Administrative Services***

# Today's Agenda

- 8:30 Welcome
- 8:45 Campus Updates
- 9:30 Mesa Pathways
- 10:00 San Diego Community College District
  - Board President Maria Senour
  - Chancellor Constance Carroll
  - AFT President Jim Mahler
- 10:30 Students' Needs, Mesa's Promise
  - Guest and Student Panel
- 11:30 Olympian Spirit Awards
- 11:45 The BIG Picture
- 12:00 Lunch

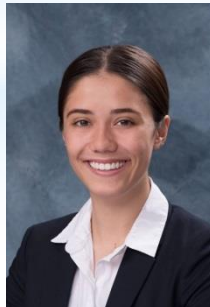


# Governance Fall 2018

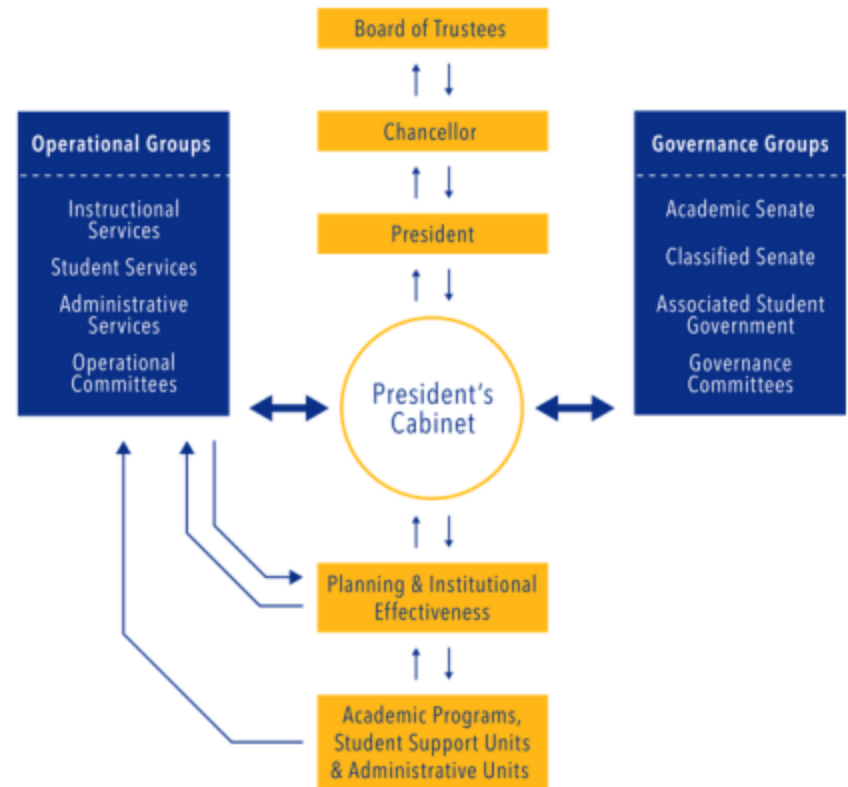
## Working Together at Mesa College

[www.sdmesa.edu/about-mesa/governance](http://www.sdmesa.edu/about-mesa/governance)

- **Kim Perigo**, President, Academic Senate
- **Trina Larson**, President, Classified Senate
- **Sofia Castellani-Staedler**, President, Associated Students



### GOVERNANCE CHART



# Academic Senate Update

nbq9f6

Kim Perigo, President,  
Academic Senate

#allin4students



# Academic Senate



# Academic Senate Recognitions





# Mesa Pathways



*(video)*

# Mesa Pathways



*“Knowing  
is better  
than  
wondering.”  
-Benjamin Franklin*

# Classified Senate Update

Trina Larson, President,  
Classified Senate

#allin4students

# Associated Students Update

**Sofia Castellani-Staedler, President,  
Associated Students**

**#allin4students**



# New and Promoted Faculty and Staff

[Welcome to Mesa College!](#)

*(video)*



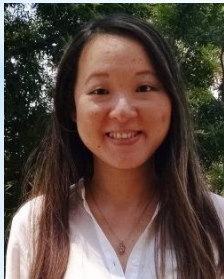
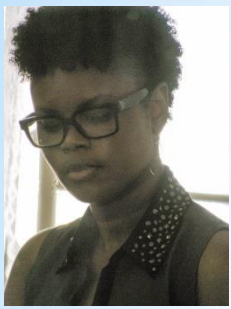
**#allin4students**

# Administrators



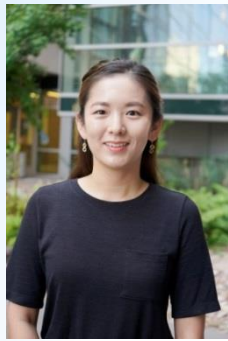
- Lorenze Legaspi, VP of Administrative Services
- Leslie Shimazaki, Interim VP of Instruction
- Aileen Crakes, Dean of Student Development
- Susan Topham, Dean, Math and Science
- Chris Sullivan, Acting Dean of Arts and Languages

# Faculty



- Christina Crosby, AP, Psychology
- Marwan Hanania, AP History
- Kimberly Mills, AP Radiological Technology
- Tracy Penrod, AP Medical Assisting
- Amy Aswell, AP Interior Design
- Katlin Choi, AP Work Based Learning Coordinator
- Shawn Fawcett, AP Work Based Learning Coordinator
- Paige Connell, AP Biology

# Faculty



- Alex Holowicki, AP History
- Sarah Kim, AP Interior Design
- Dean Leavitt, AP Biology
- Daniela Bruckman, AP Biology  
Natural History
- Sam Lee, AP Computer &  
Information Science
- Eduardo Landeros, AP Business
- Adrienne Milner, AP Computer &  
Information Science
- Rebecca Nieman, AP Business





# Staff

- Thanh-Thao Vu  
Senior Student Services Assistant
- Erick Escalante  
Instructional Assistant
- Jordan Frodente  
Student Services Assistant
- Raymond Arellano  
Student Services Assistant
- Andrew Tanjuaquio  
Student Services Technician
- Abimaliel Rosario Lopez  
Student Services Technician



# Staff

- Azucena Murillo  
Senior Clerical Assistant
- Helen Trejo  
Instructional Assistant
- Cynthia Purnell  
Program Support Technician
- Adrian Tanjuaquio  
Student Services Technician
- Amy Bettinger  
Student Services Technician
- Karina Sandoval  
Student Services Assistant
- Jose Aranda  
Student Services Assistant

# Promotions and Transfers



- Alexi Balaguer  
Senior Student Services Assistant
- Catherine Cannock  
Instructional Assistant/STEM
- Jennifer Armer  
Instructional Lab Technician,  
Art Gallery
- Kevin Branson  
Instructional Computing  
Specialist Supervisor
- Aracely Bautista  
Administrative Technician

# President's Message

Students' Needs, Mesa's Promise

Dr. Pamela T. Luster,  
President

#allin4students



# President's Message



#allin4students

# President's Message



#allin4students

# Student Services Updates

Ashanti Hands

Vice President Student Services

#allin4students



## **Departments**

Admissions  
 Assessment & Testing  
 Associated Students/Clubs  
 AVANZA | Peer Navigator | CRUISE  
 CalWORKs  
 Career  
 Counseling  
 Disabled Student Programs & Services (DSPS)  
 EOPS/CARE  
 Evaluations  
 Financial Aid  
 Outreach & Community Relations  
 STAR TRIO  
 Student Affairs  
 Student Equity  
 Student Health Services  
 Student Success & Support Program  
 Transfer  
 Veterans and Records

## **Equity Efforts | Programs**

AB 540 | Borderless Scholars  
 Athletes  
 Department Liaisons  
 Direct Support  
 Embedded Counseling  
 First Year Experience  
 Former Foster Youth  
 Formerly Incarcerated  
 International Students  
 Orientation  
 Personal Growth  
 Promise  
 Puente  
 Second Year Experience | Advoc8  
 The Stand  
 Umoja



Placement Assistant | Multiple Measures  
San Diego Promise | Personal Growth  
Farmers Market  
Welcome Week



# What's Happening Now

# Our Story. Our Spaces.



## Defining Equity

- At Mesa, equity is a student-centered approach to fostering a culture of success for historically marginalized students. In our roles as faculty members, student services practitioners, staff, and administrators, we pursue equity through principles of inquiry and data-informed decision making.
- We will achieve equity when we see parity in outcomes across racial/ethnic groups, as well as other disproportionately impacted groups within higher education. We work within integrated and equity-minded systems to ensure that everyone has what they need to succeed during their time at Mesa College.



## Celebrating Success

- Completion
- Degree Attainment
- Transfer Rates

## Transforming Spaces

- AVANZA Remodel
- CalWORKs
- Serenity Room



# What's Getting Better

# Service Learning



## Grants

Suicide Awareness/Prevention

Former Foster Youth

AB 540/Borderless Scholars

Veterans



# What's New

# Student Services Monthly Updates

[http://www.sdmesa.edu/  
STUDENT-  
SERVICES/STUDENT-  
SERVICES-REPORTS.SHTML](http://www.sdmesa.edu/STUDENT-SERVICES/STUDENT-SERVICES-REPORTS.SHTML)



## STUDENT SERVICES MONTHLY UPDATES

**Student Services Monthly Updates** are designed to tell our story of providing pathways that inspire, engage and empower our diverse students to learn and succeed. These updates also track our support of Mesa's journey of becoming the leading college of equity and excellence. We encourage you to review our highlights and dig deeper into departmental updates to learn about new employees, innovations, data, events/activities, student success stories, new policies/procedures, and special recognitions impacting the way we serve students. Thanks to our incredible Student Services Team for their tireless efforts in creating the conditions that matter for our students to succeed.

*- Ashanti Hands, Vice President, Student Services*

2017 - 2018

2016 - 2017



# Instructional Services Update

**Leslie Shimazaki**  
Interim Vice President, Instruction

# CCC Funding Formula

It's changing!



Up to Spring 2018

# CCC Funding Formula

It's changing!



Fall 2018 →

# CCC Funding Formula

It's changing!

**10%  
Success**

Transfer Eng & Math

- Degrees
- Certificates
- Transfer
- 9 + CTE units
- Other

**20%  
Equity**

- Pell grants
- CCPG (BOGW)
- AB 540



# What Might it Look Like in a Classroom?

**\$3,727 per full-time equivalent student (FTES)**



**\$1,990**

Pell\*CCPG\*Certificate

**\$1,764**

CCPG\*Associate Degree

**\$4,630**

Pell\*CCPG\*Transfer Eng &  
Math\*Certificate\*ADT

**\$0**

No financial aid\*no SS metrics

# Enrollment Management Fall 2017 vs. Fall 2018

## Mesa

- Sections: +108
- FTES: -255, -4.3 %
- Headcount: -694, -3%

## District

- Sections: +148
- FTES: -494 FTES
- Headcount: -1,355, -3%



# Moving forward, we focus on...

- Creating schedules to meet student needs
- Continuing with, enhancing, and creating support mechanisms/processes that promote student success



# Administrative Services Update

**Lorenze Legaspi**

Vice President Administrative Services

**#allin4students**





# Props S & N Project Updates – Fall 2018

PROJECT	CONSTRUCTION COMPLETE	OCCUPANCY
Center for Business & Technology	December 2018	January 2019
I300 / Fine Arts	December 2018	January 2019
Mesa Quad - project in planning depended on completion of other projects		
Ancillary Moves - assessing and planning		



# MesaMoves and Parking



- Valet and Parking - First 2 weeks; Permit needed
- Kearny High School Parking - First 2 weeks; Permit not needed
- Grace Brethren Church (New) - Throughout term; Free Parking, no permit needed
  - The last car must be gone from the lot by 5pm
- Parking Spots behind structure
- Visit the MesaMoves website for all information:
  - <http://www.sdmesa.edu/mesamoves>

# Admin. Services for Faculty and Staff



## Business Office

- PeopleSoft HCM:
  - Personal Information
  - Time Reporting
  - Payroll & Compensation
  - Benefits

Call **x 2222** for  
appointment

## Business Services

- Services Offered:
  - Budget Monitoring  
Training
  - Office Solutions
  - Travel and Mileage Claims

Call **x 2771** for  
appointment

# Mesa Pathways

## Students' Needs, Mesa's Promise

Ashanti Hands

Vice President Student Services

#allin4students

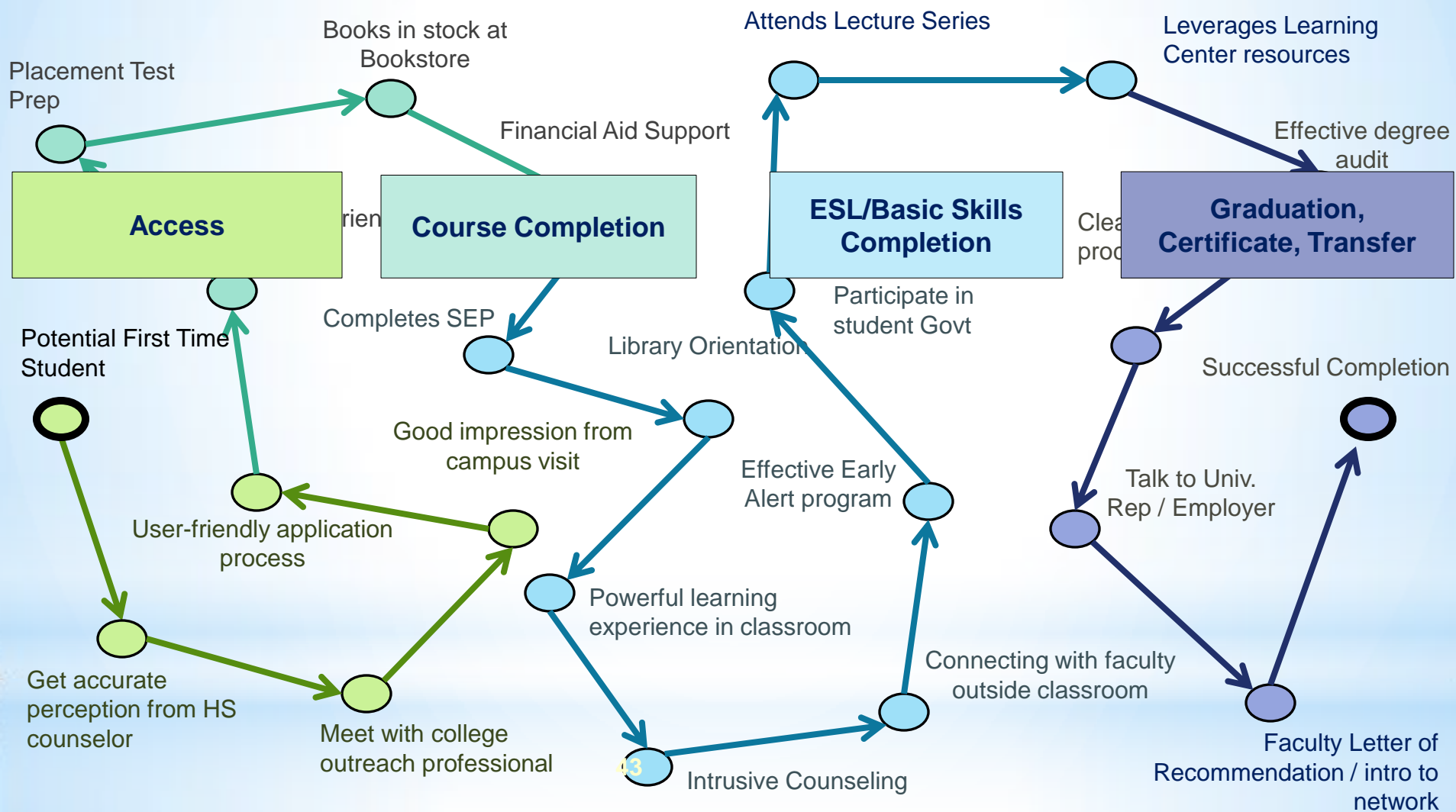


Potential First  
Time Student

Successful  
Completion



# Student Pathways



# The Guided Pathways framework creates a highly structured approach to student success that:



Provides all students with a set of clear course-taking patterns that promotes better enrollment decisions and prepares students for future success.



Integrates services in ways that make it easier for students to get the help they need during every step of their community college experience.

---

Process



Funding



Innovation



# What is Guided Pathways?

## Clarify the Path



Create Clear  
Curricular  
Pathways to  
Employment  
and Further  
Education

## Enter the Path



Help  
Students  
Choose and  
Enter Their  
Pathway

## Stay on the Path



Help  
Students  
Stay on  
Their Path

## Ensure Learning



Follow Through,  
and Ensure that  
Better Practices  
are Providing  
Improved  
Student Results.

# Guided Pathways: Pillars

**Programs that are fully mapped out and aligned**

with further education and career advancement while also providing structured or guided exploration for undecided students.



**Proactive academic and career advising**

from the start through completion and/or transfer, with assigned point of contact at each stage.



**Early alert systems**

aligned with interventions and resources to help students stay on the pathway, persist, and progress.



**Redesigning and integrating basic skills/developmental education classes**

to accelerate students to college-level classes.



**Structured onboarding process**

including improved placement tests and co-requisite instruction that provide students with clear, actionable, and usable information they need to get to the right start in college.



**Instructional support and co-curricular activities**

aligned with classroom learning and career interests.



# Guided Pathways: Key Elements



The Mesa Pathways Committee (MPC) uses an integrated, equity-minded, student-centered approach to facilitate student success.

Through structured educational experiences, MPC works to close equity gaps, improve student outcomes and guide students into and through college to the completion of personal, academic and professional goals.

## Mesa Pathway Committee: Purpose

## **FACULTY**

Nellie Dougherty  
Howard Eskew, Jr.  
Suzanne Khambata  
Kim Perigo  
Sean Ricketts  
Cynthia Rico  
Manuel Velez  
Ngoc (Kim) Tran

## **CLASSIFIED PROFESSIONALS**

Trina Larson  
Yolanda Catano  
Hai Hoang  
Olivia Picolla

**Ex Officio:**  
Bridget Herrin  
Jennifer Kearns

## **ADMINISTRATORS**

Ashanti Hands  
Andy McNeill  
Tina Recalde  
Leslie Shimazaki

## **STUDENTS**

Tim Ackerson  
Jenny Nguyen  
Sierra Hudson  
Sofia Castellani-  
Staedler  
Kelly McDaniel



# **Mesa Pathway Committee: Members**

1. The average number of degree-applicable units attempted in a student's first year is
  - A. More than 15
  - B. Less than 15
2. The % of students who complete transfer English in the first year has \_\_\_\_\_.
  - A. Increased
  - B. Decreased
3. Less than \_\_\_\_\_ of students attempt 15 units in their first term
  - A. 10
  - B. 30
4. Approximately \_\_\_\_\_ of students do not persist into their second term.
  - A.  $\frac{1}{4}$
  - B.  $\frac{1}{2}$
5. Under Mesa's new placement model equity gaps have \_\_\_\_\_ significantly in both English and math.
  - A. Narrowed
  - B. Widened

# Mesa Pathways Data



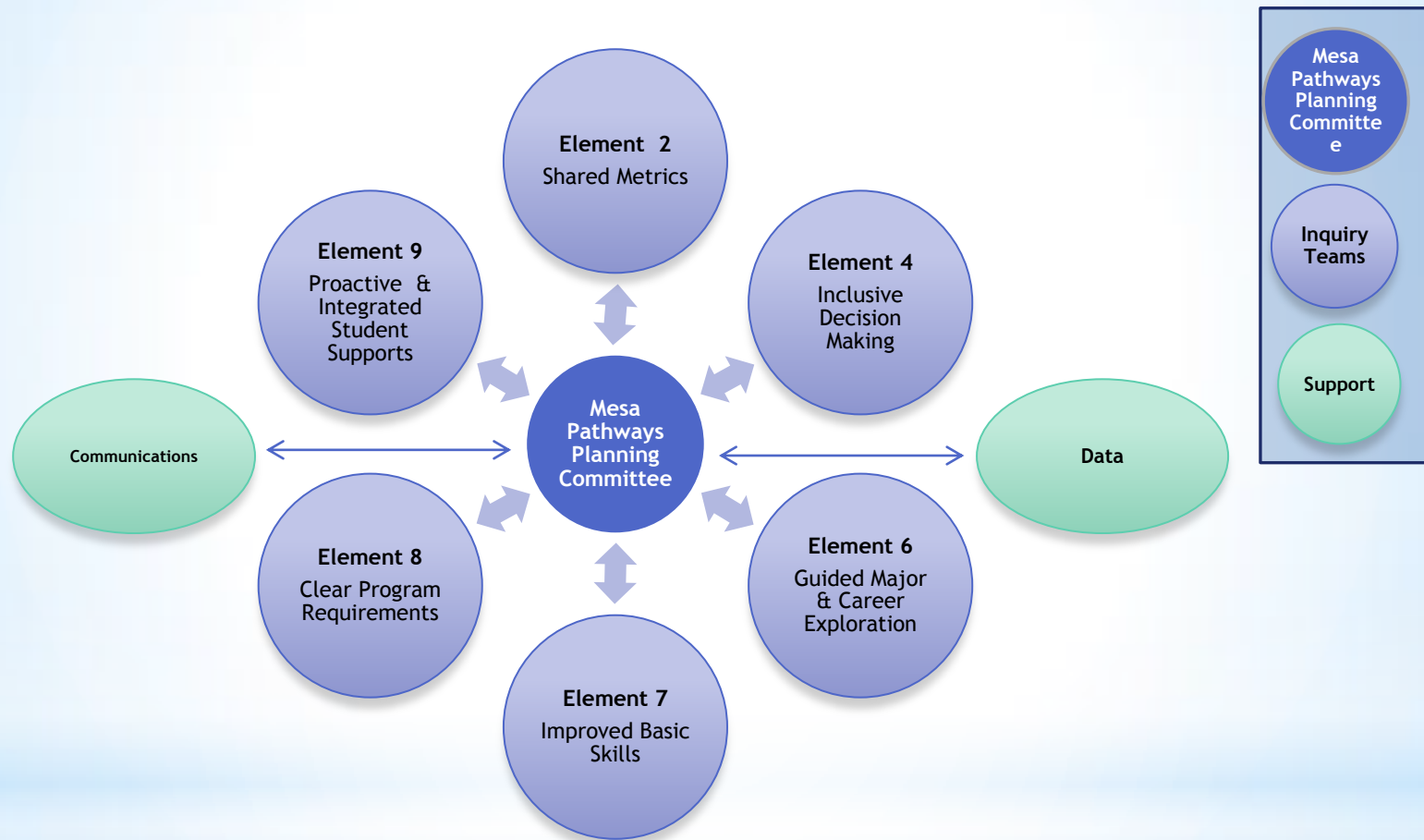
(video)

Our Why

# Mesa Pathways







# Mesa Pathways Committee Structure

- [Mesa / Guided Pathways](#)
- [Mesa Pathways Governance Page](#)
- Bubbles
- Contact Quad Chairs
  - Administrator Ashanti Hands ([ahands@sdccd.edu](mailto:ahands@sdccd.edu))
  - Faculty Manuel Velez ([mvelez@sdccd.edu](mailto:mvelez@sdccd.edu))
  - Classified Professional Trina Larson ([tlarson@sdccd.edu](mailto:tlarson@sdccd.edu))
  - Student TBD

# Open Invitation to Participate

**Join Us....**



**We'll leave the light  
on for you.**

# Mesa Welcomes the San Diego Community College District

Board President Maria Senour  
Chancellor Constance Carroll  
AFT President Jim Mahler

SAN DIEGO  
MESACOLLEGE



# Students' Needs Mesa's Promise

Community Partners and  
Student Panel



#allin4students





# Community HousingWorks



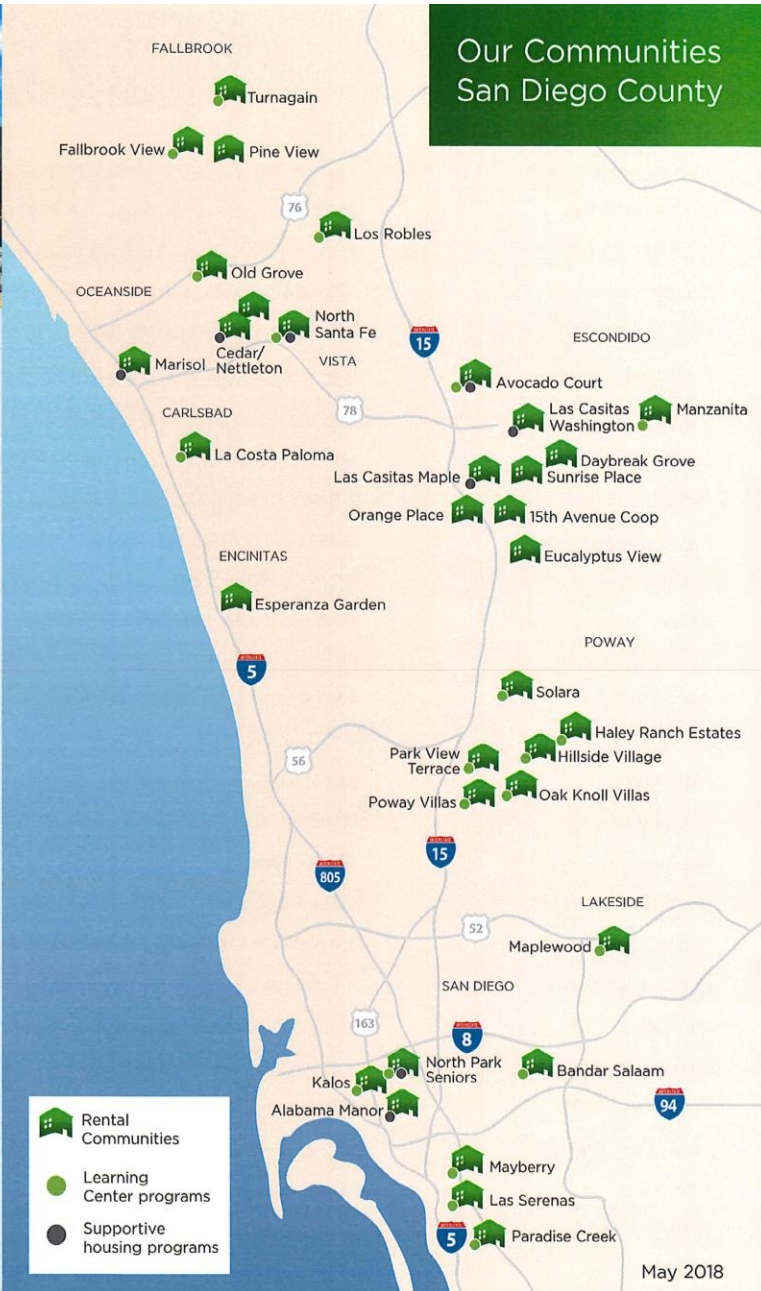
**Opportunity begins with a *stable* home.**

**Community HousingWorks *builds and renovates life-changing affordable apartment communities and provides resident-centered services* so that working families, seniors, and people with disabilities can forge stronger futures.**





Community HousingWorks builds and owns attractive, safe, and sustainable apartment communities that people can be proud to call home. Over 9,000 people across California find stable homes in our affordable communities.



**38 Communities**  
**3,100 Apartments**  
**9,142 Residents**  
**22 Comm. Centers**

**2,200 In SD County**  
**>1200 Apartments in Pipeline**



## Belle Ayala

- First-generation college student
- Former SD City College student
- Las Serenas Community resident
- Affordable and safe home
- Life changing experience
- Community engagement
- Child Development major
- 2017 CHW Valor Scholarship recipient



# Housing Affects Everyone



Source: San Diego Union Tribune



# Economics

- Pay > 50% of income for rent
- Limited access to schools, health, jobs
- People move often as rents increase
- Neighborhood stability/crime
- Live far away -commute- adding cost

## ■ Homelessness:

- Students in unsheltered, transitional housing or shelters, in motels or hotels, or most frequently, doubled up in a home with another family.\*

Source: San Diego County Office of Education and California Department of Education



# Affordable Housing

- Creates jobs
- Increases family stability
- Strengthens communities
- Reduces traffic & pollution
- Good for business & economy



# CHW's Affordable Rental Homes

- Bank Tellers
- Day care workers
- Retail/Service Workers
- Administrative Assistants
- Restaurant workers
- Hotel Clerks
- Senior citizens
- Veterans
- Housekeepers





# CHW Building Communities

## ■ Community Partnerships

- San Diego Food Bank
- Scripps Health
- Interfaith Community Services
- Jewish Family Services
- San Diego LGBT Center

## ■ School Success

- Literacy Programs
- Leadership training
- Academic tutoring, mentoring and college preparation
- Scholarship Programs

## ■ Financial Fitness

- Financial goal setting
- Savings & spending
- Credit education
- Debt education & debt reduction



# Kalos (North Park)



# Paradise Creek (National City)





Opportunity begins with a *stable* home.

Thank You



Connect with us:

[www.chworks.org](http://www.chworks.org)

[info@chworks.org](mailto:info@chworks.org)

619.282.6647

# Students' Needs Mesa's Promise

Let's Kahoot It

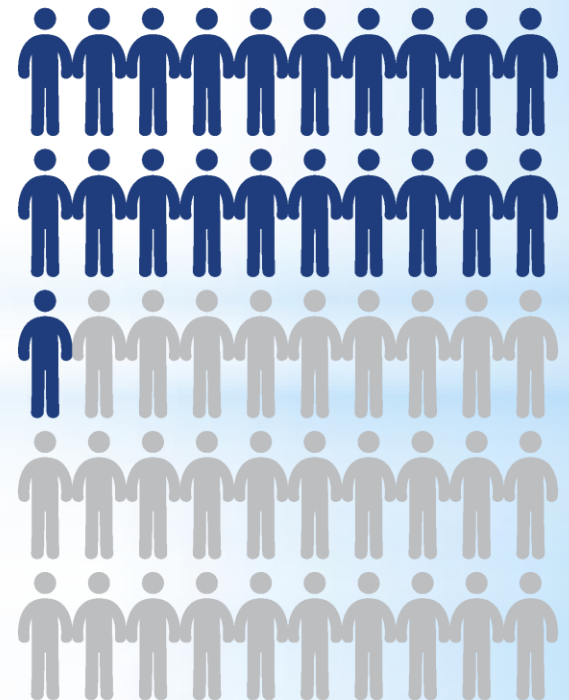
<http://bit.ly/HLMesa18>

Bridget Herrin, Ed.D.  
Associate Dean,  
Research and Planning

# Students' Needs, Mesa's Promise

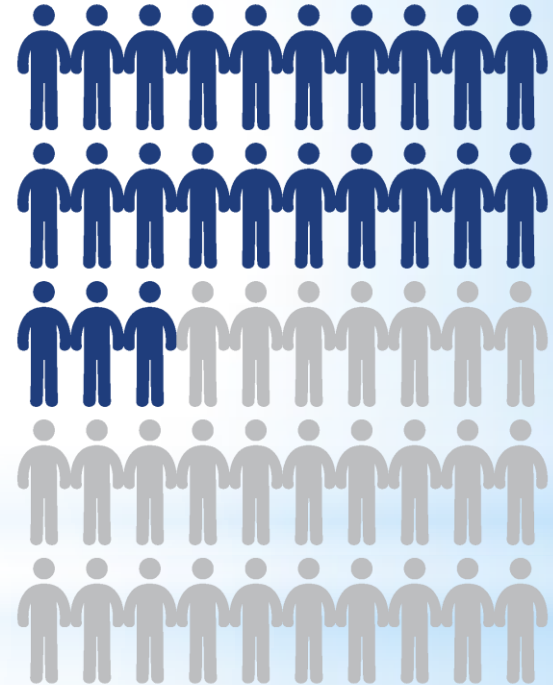
## According to 2017 HOPE Lab Survey

1) Despite a decline from the 2016 study, the 2017 National HOPE lab study still indicates 42% of community college students experienced low or very low food security (*limited or uncertain availability of nutritionally adequate and safe foods, or the ability to acquire such foods in a socially acceptable manner.*)



# Students' Needs, Mesa's Promise

2) In the 2017 study, 46% of Mesa College students were housing insecure *(a broad set of challenges such as the inability to pay rent or utilities or the need to move frequently.)*



3) More than 1 in 10 students at Mesa College experienced homelessness in the last year *(being without a place to live, often residing in a shelter, an automobile, an abandoned building, or outside).*



# **Students' Needs Mesa's Promise**

## **Guest and Student Panel**

### **Moderator**

Larry Maxey, Dean of Student Equity and Success

### **Community Partners**

Kelcey Ellis, Director of Programs, Feeding San Diego

Arturo Vazquez, Associate Director of Service Partnerships,  
Community Housing Works

### **Students**

Robyn Bolden

Carlos Rodriguez

Jenny Nguyen

### **Classified/Faculty**

Johanna Aleman

The Stand Coordinator,  
Student Success & Equity  
Veronica Gerace, Professor



# **Students' Needs Mesa's Promise**

**Community Partner  
Kelcey Ellis, Director of Programs  
Feeding San Diego**

A close-up photograph of a person's hands holding a large, vibrant red bell pepper. The hands are positioned with fingers spread, supporting the pepper from underneath. The person has light skin and is wearing a light blue shirt. Their fingernails are painted a bright pink color. The background is a dark, out-of-focus grey. The text "College Student Hunger" is overlaid in white, bold, sans-serif font across the middle of the image.

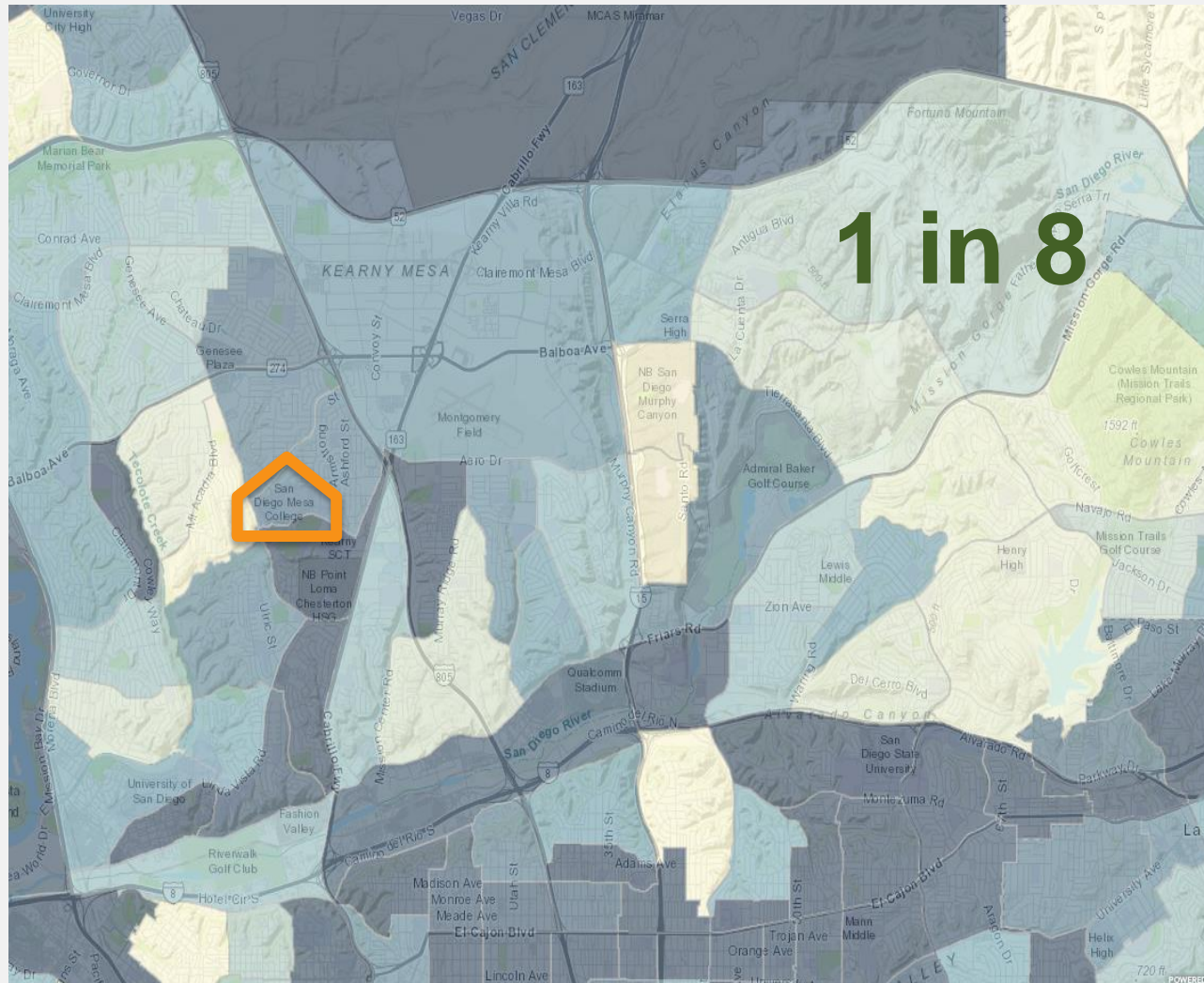
# College Student Hunger



# What is Food Insecurity?

- “Limited or uncertain availability of nutritionally adequate and safe foods, or the ability to acquire such foods in a socially acceptable manner.”<sup>2</sup>
- “The condition assessed in the food security survey and represented in USDA food security reports—is a household-level economic and social condition of limited or uncertain access to adequate food.”<sup>3</sup>

# Food Insecurity in San Diego



## Key Facts

**36-48%**

Students reporting food insecurity in past 30 days<sup>1,2</sup>

**25-42%**

Community College students reporting food insecurity<sup>1,2</sup>

**26.5 mil**

Pounds of food that would be in the landfill if not for FSD

**13.8 mil**

Pounds of fresh fruits and vegetables that got to families in need through FSD





**Distributions**



**CalFresh  
Assistance**

# **COLLEGE STUDENT SUPPORT**

## References

1. Cady, Clare Dubick, James Mathews, Brandon. (2016). *Hunger on Campus (PDF)*. National Student Campaign Against Hunger & Homelessness.
2. Goldrick-Rab, S., Richardson, J., Schneider, J., Hernandez, A., & Cady, C. (2018). *Still hungry and homeless in college*. Wisconsin Hope Lab.
3. Coleman-Johnson, A., Gregory, C. A., & Rabbitt, M. P. (2017, October 4). Definitions of Food Security. Retrieved August 8, 2018, from <https://www.ers.usda.gov/topics/food-nutrition-assistance/food-security-in-the-us/definitions-of-food-security.aspx>

A photograph of three children on a swing set in a park. In the foreground, a young girl with dark hair, wearing a purple jacket and pink pants, is swinging happily with her legs outstretched. Behind her, another child in a red shirt is partially visible. To the left, a third child in a purple patterned jacket is also on a swing. The background shows a grassy field, some trees, and a clear blue sky. The text "TOGETHER WE CAN SOLVE HUNGER" is overlaid in white capital letters across the middle of the image.

**TOGETHER WE CAN  
SOLVE HUNGER**

The logo for Feeding San Diego, featuring a stylized orange wheat stalk icon above the text "FEEDING" in orange and "SAN DIEGO" in green, all contained within a white rounded rectangle.

**FEEDING<sup>®</sup>**  
**SAN DIEGO**

# Students' Needs Mesa's Promise

**Community Partner**

**Arturo Vazquez**

Associate Director of Service Partnerships  
Community Housing Works



# Students' Needs Mesa's Promise

## Guest and Student Panel Q & A

### **Moderator**

Larry Maxey, Dean of Student Equity and Success

### **Community Partners**

Kelcey Ellis, Director of Programs, Feeding San Diego

Arturo Vazquez, Associate Director of Service  
Partnerships, Community Housing Works

### **Students**

Robyn Bolden

Carlos Rodriguez

Jenny Nguyen

### **Classified/Faculty**

Johanna Aleman

The Stand Coordinator

Student Success & Equity

Veronica Gerace, Professor



# Mesa College Equity Programs

- Borderless Scholars
- Fast Scholars
- Categorical Program Support
- Classroom Tutoring
- Course Redesign Institute (CRI)
- **Direct Support Program**
- Financial Literacy Initiative
- Jumpstart Your Success Program
- Math Acceleration Project
- Athletics
- Multiple Measures Assessment Project
- MT2C
- Office of Student Success & Equity
- Peer Navigator Program
- Second Year Experience (SYE)
- STEM Workshop Series
- Summer Cruise
- The LOFT
- **The Stand**
- **The Stand-Farmers Market**

# Students' Needs, Mesa's Promise

## Table Topics

# PROGRAM REVIEW



2018-2019  
COMPREHENSIVE

*Madeleine J. Hinkes*  
*Dean of Institutional Effectiveness*



# PROGRAM REVIEW

## 2018-2019 COMPREHENSIVE

### What's New:

- Data dashboards
- Streamlined resource requests
- Set new goals
- Career Education/Strong Workforce

### What's Continuing:

- Taskstream module
- Lead writers and liaisons
- Tell your story

SAN DIEGO  
MESA COLLEGE





# PROGRAM REVIEW

## 2018-2019 COMPREHENSIVE

### Important Dates:

Monday, Dec 10: Ready for review

Monday, Feb 4: Final due date

*Training schedule posted*

### Program Review Co-chairs:

Bruce Naschak, Genevieve Esguerra

Madeleine Hinkes

Anda McComb, Admin Tech  
(x2235)

SAN DIEGO  
MESA COLLEGE



# Recognition

Dr. Pamela Luster

#allin4students

# San Diego Mesa College Foundation

## 2017-2018 Highlights

- Awarded nearly \$250,000 in scholarships
- Invested in **18 Mini-Grants** for Mesa staff and faculty
- Connected over **200** community members to the campus through events



# San Diego Mesa College Foundation

## 2018-2019 Focus

- Increase support for Mesa College mission and students
- Grow the Board
- Help share Mesa's story



# Mesa Promise Match Challenge



[sdmesa.edu/PromiseChallenge18](https://sdmesa.edu/PromiseChallenge18)

- The Mesa College Foundation will generously match San Diego Promise donations up to \$25,000 through Friday, September 14, 2018.
- The Challenge will culminate during *An Evening with Annette Bening, to Benefit the San Diego Promise*, the September 20th gala at The San Diego Natural History Museum, featuring Mesa College alumna Annette Bening.



# Join the Challenge!

SAN DIEGO MESA COLLEGE FOUNDATION

WHO WE ARE • WHAT WE DO • OUR IMPACT • GET INVOLVED • APPLY FOR FUNDS • GIVE NOW



## The Mesa Promise Match Challenge 2018

Take the Mesa Promise Challenge!  
Donate Today

\$12,952

\$12,952

Donations - Matching Funds

29 days, 23 hours, 22 minutes, 11 seconds  
left to fulfill our Promise.

**GIVE NOW**



\$25,904 of \$50,000 raised

\$1 from you	+ \$1 from us	= \$2 for students
-----------------	------------------	-----------------------

### Double your impact

For every dollar you give, we will donate another dollar to the San Diego Promise. We are matching up to \$25,000 between now and September 14<sup>th</sup>.

[sdmesa.edu/PromiseChallenge18](https://sdmesa.edu/PromiseChallenge18)



# Health Information Management (HIM) Bachelor of Science degree

In May 2018, Mesa College conferred the first Bachelors degrees in the history of the College.

HIM prepares students to work at a management level in settings including acute and subacute hospitals, outpatient clinics, government agencies, and electronic health records industry vendors



# Students' Needs, Mesa's Promise

## HELPFUL RESOURCES FOR STUDENTS

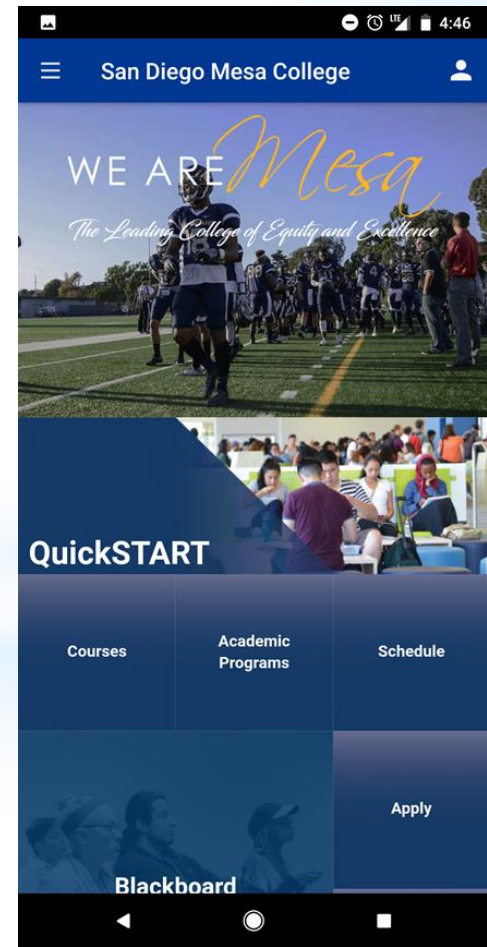
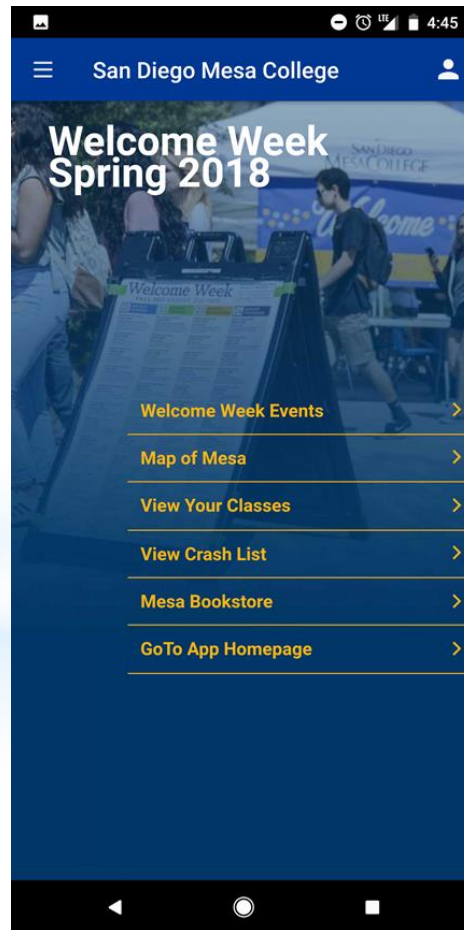
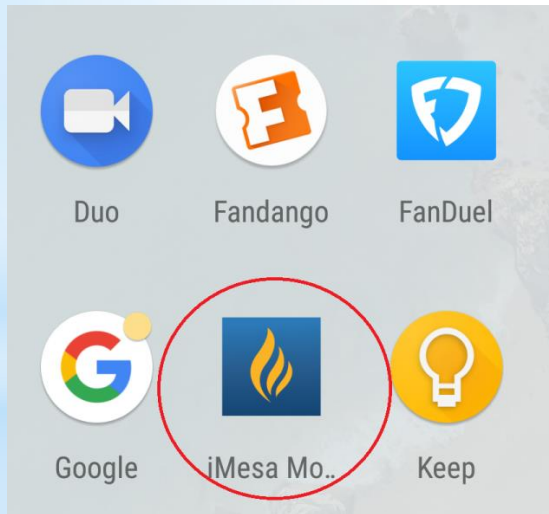
I NEED SUPPORT WITH...	RESOURCE	WHERE	CONTACT
Academic Support, Educational Planning and Personal Counseling	Counseling DSPS STAR Trio EOPSCARE CalWORKs	I4-303 I4-405 I4-309 I4-308 I4-410	619-388-2672 619-388-2780 619-388-2706 619-388-2481 619-388-2709
Associated Students	Student Affairs	I4-408	619-388-2699
Books, Gear and Supplies	Campus Store	Mesa Commons	619-388-2854
Book Loan Program	Textbook Reserve	LRC	619-388-2695
Bus Pass	Accounting	I4-103	619-388-2704
Childcare	Child Development Ctr.	CDC   R100	619-388-2812
Clubs (students)	Student Affairs	I4-408	619-388-2699
Commencement   Graduation	Evaluations	I4-306	619-388-2680
Computer Lab	Learning Resource Ctr. (LRC)	1st & 4th floor	619-388-2660
Copy Machines   Pay for Print	Learning Resource Ctr. (LRC) AVANZA Campus Store	1st & 4th floor I4-203 Mesa Commons	619-388-2880
Dining   Coffee   Grab & Go Items	Cafeteria & M-Stop, Terrace Café, and Java Jive Espresso	Mesa Commons   I400 (4th floor) LRC (1st floor)	N/A
Disability Accommodations	DSPS	I4-405	619-388-2780
Dreamers, AB540, Undocumented Students	EOPS/CARE	I4-309	619-388-2706
Financial Support   Hardship	Financial Aid Student Success & Equity	I4-100 I4-401	619-388-2817 619-388-5940
Foster Youth Services (former/current)	FAST Scholars/NextUp	I4-309	619-388-2992
Health Fee (payment)	Accounting	I4-103	619-388-2704
Health Services (psychological counseling, flu, disease testing, MD, therapists, and free nurses)	Health Services	I4-208	619-388-2774 Crisis Line: 1-800-479-3339
Homeless	EOPS/CARE	I4-309	619-388-2706
Honors Programs   Classes	Honors Center	I-109	619-388-2341
Hungry (free food)	The Stand: Food & Professional Clothing and Farmers Market	I4-204	619-388-5940
Jobs and Career Services	Career Center	I4-306	619-388-2777
Library	Learning Resource Center	LRC Building	N/A
Professional Clothing (free)	The Stand: Food & Clothing Bank	I4-204	619-388-5940
San Diego Promise	Outreach	I4-104	619-388-2230
Science, Technology, Engineering & Math (STEM) Programs and Services	STEM Center	LRC 115	619-388-2257
Scholarships	Student Affairs	I4-408	619-388-2699
Student Complaints	Student Affairs	I4-408	619-388-2699
Student I.D.	Admissions	I4-102	619-388-2682
Student Rights, Responsibility and Safety	Student Affairs	I4-408	619-388-2699
Transcript Orders	District	<a href="https://studentweb.sdccd.edu/transcript/">https://studentweb.sdccd.edu/transcript/</a>	
Transfer	Transfer Center	I4-306	619-388-2718
Tutoring	MT2C - Mesa Tutoring & Computing Centers	LRC 1st flr General LRC 2nd flr Writing & Lang. LRC 4th flr Math & Science	619-388-2966 619-388-5049 619-388-2898
Veterans	Veterans Office	I4-102	619-388-2805
TANF/Cash Aid Recipient Support	CalWORKS	I4-410	619-388-2709

For most recent list visit: [www.sdmesa.edu/student-services](http://www.sdmesa.edu/student-services)



# “Mesa Mobile”

- Upgraded design and functionality for the iMesa Mobile app
- Download it now to get important notifications and updates
- Please encourage your students to also download the app
- Available on iTunes and in the Google store.





# Mesa College on Social Media

[www.sdmesa.edu](http://www.sdmesa.edu)

sdmesaprez

/sandiegomesacollege



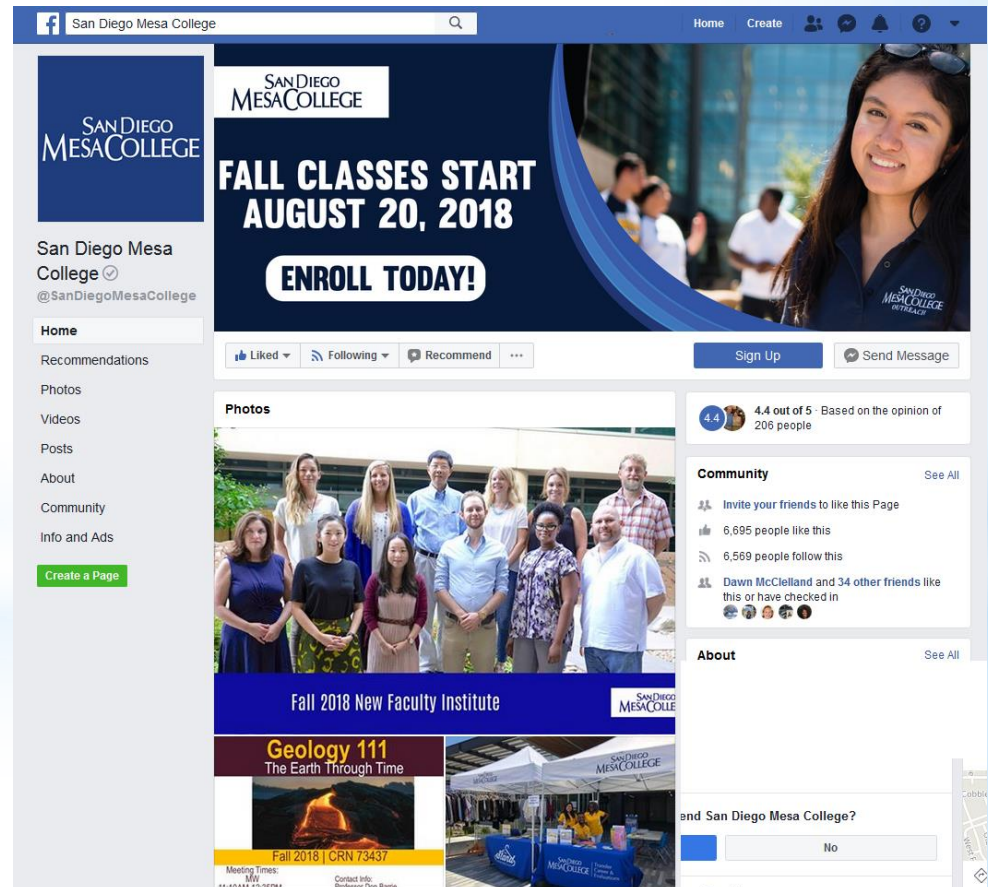
sdmesacollege



#SDMesaCollege

#WeAreMesa

#allin4students



# Upcoming Events

- **Welcome Week:** Aug 20<sup>th</sup> - 24<sup>th</sup>
- **Famers Market:** Thurs, Aug 23<sup>rd</sup>
- **President's Breakfast:** Fri, Sept 7<sup>th</sup>
- **Promise Gala; An Evening with Annette Bening:** Thurs, Sept 20<sup>th</sup> at The Nat
- **Spirit Week:** Sept 17<sup>th</sup>-21<sup>st</sup>
- **Homecoming Football vs. Grossmont:** Sept 22<sup>nd</sup>
- **Taste of Mesa:** Thurs, Oct 4<sup>th</sup>





# Olympian Spirit Awards

*(video)*

#allin4students

Pam Luster  
Kim Perigo  
Trina Larson

# Thank you!

Meet us in *Sunrise Plaza* for the BIG PICTURE!



*Lunch will be served afterwards*