



# Safety & Emergency Preparedness

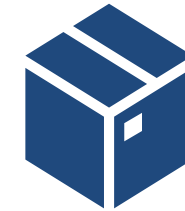




# Emergency Management Rollout Updates



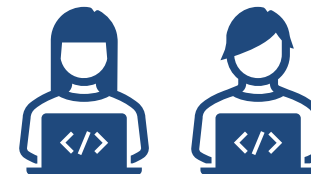
**PHASE I:**  
**Develop Individual Building Evacuation Plans**  
**Completed!**



**PHASE III:**  
**Emergency Pods**  
50% complete.



**PHASE II:**  
**Establish ICS Positions**  
**Completed!**



**PHASE IV:**  
**ICS Tabletop Drill**  
Not complete: this will be done once Phase 2 is completed



**PHASE IV:**  
**Building Evacuation Drill**  
Not complete; Phase 1 must be completed first



**PHASE III:**  
**Reboot C-CERT**  
**Completed!**



**(Revised) Phase V:**  
**California ShakeOut & Safety Fair**  
**Completed!**



**PHASE III:**  
**FRS Radio Collection and Redistribution**  
**Completed!**



**(NEW) PHASE VI:**  
**Tabletop with C-CERT & Building Evacuation**  
**-October 16, 2025**

**October 2024**

# Next Steps

Building Evacuation  
Plan Merge

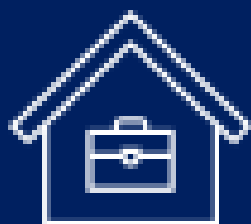
ICS Tabletop  
Drill

Emergency  
Management  
Application

# Building Evacuation Plan – Next Steps

## Base Plan

Boiler plate language included for all buildings



## Conversion

- Convert individual building evacuation plans into a cohesive document
- Building specific plans (P300)
- Inhouse emergency team
- Evacuation map
- Building specific information (special requirements)



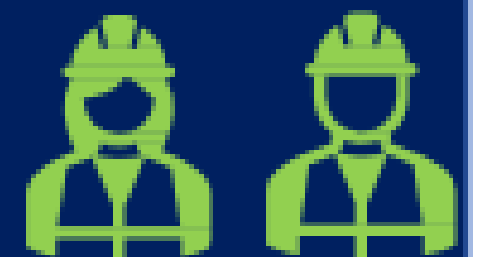
## Merge

- Merge all documents into the Campus-Wide plan
- Convert the document to PDF
- Distribute via Teams



## Training

- In collaboration with Managers and Supervisors, deploy in-service training spring 2025
- Training for the inhouse building evacuation teams
- Training for building occupants
- School meeting
- Department meeting
- Chairs meeting
- etc.

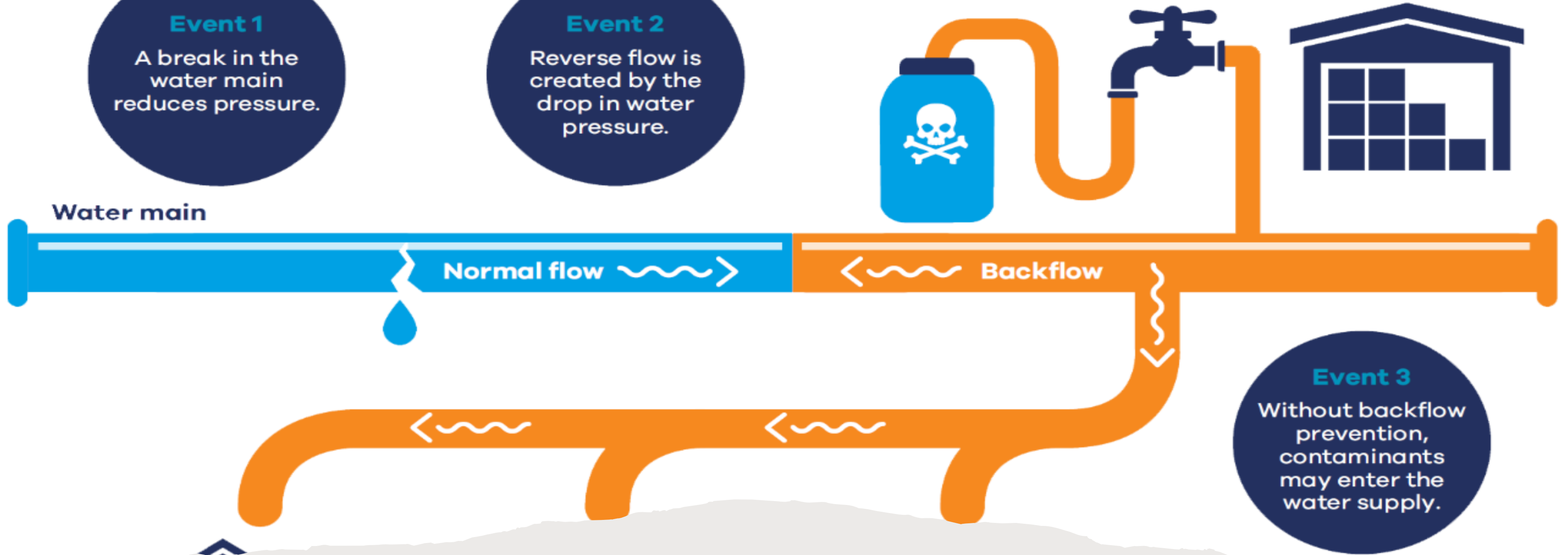


### Event 1

A break in the water main reduces pressure.

### Event 2

Reverse flow is created by the drop in water pressure.



## ICS Tabletop Drill

# Potential Mass Communication Tool

WHAT IS THE  
LOCATION OF THE  
EMERGENCY?



CAN WE SEND AN  
UPDATE ON THE  
SITUATION?



CAN WE  
COORDINATE  
OUR RESPONSE?

- Customization: Branding aligned with institutional identity.
- Notifications: Push and desktop notifications for alerts.
- Safety Features: Mobile Blue Light, Virtual Walk Home, Friend Walk.
- Reporting: Anonymous and live reporting options.
- Resources: Offline emergency plans, aggregated support resources.