

From: Mesa President's Office <MesaPresidentsOffice@sdccd.edu>

Sent: Thursday, April 24, 2025 1:33 PM

Subject: Weekly Update from Prez Hands - Week of April 21, 2025



Hello Mesa College Community!

Weekly Update from Prez Hands provides a brief overview of the exciting efforts taking place within our community. The updates are also a great way to tell our collective story of success, and to document our journey of becoming the Leading College of Equity and Excellence. Enjoy!

.....

OFFICE OF THE *President*



2025 Faculty Recognition Ceremony: Tenure, Promotion & Retirements

- ◆ Tenure is not just a milestone -it's a promise to serve.
- ◆ Promotion is not just a title - it's a reflection of excellence.
- ◆ Retirement is not an end, it's a legacy etched into the soul of [@sdmesacollege](https://twitter.com/sdmesacollege).

Congratulations to each of our honorees! We see your dedication, brilliance, and labor of love. Your impact is real and lasting, seen in the students whose lives you have changed through your teaching, counseling mentorship, and care.

Thank you for believing in the transformative power of education! Well done.



We are asking departments, shared governance groups and interested individual community members to help continue the wonderful tradition of donating themed baskets for our opportunity drawing, with proceeds going to an emergency relief fund that will help students overcome financial setbacks without dropping out.

If you would like to donate a basket, please bring your basket to the Student Affairs Office (I4-408) **by 4:00pm on Monday, April 28th**. All contributions will be recognized as supporters of the **32nd Annual Scholarship Awards Ceremony**. Assistance with assembling your items into a basket is available, just contact us for help!

Please call (619) 388-2699 with questions or concerns. Thank you so much for your support!

We joyfully invite you to celebrate with us at the
32nd Annual Scholarship Awards Ceremony!
This year, thanks to all of you, we are able to award **over \$150,000** in scholarships to **155 students!**

Wednesday, April 20, 2025 at 4:30 p.m.
Mesa College Gym

We are asking departments, shared governance groups, and interested individual community members to help support his wonderful event by:

[Purchasing or Donating Tickets](#)
[Becoming a Sponsor](#)

-or-
Donating Items and Services! (see below)



In loving memory of Dr. Jill Baker

It is with great sadness to announce the passing of our colleague, Dr. Jill Baker, at the age of 73.

Dr. Baker began her educational career at Mesa as an Audiovisual Librarian, moving up in the ranks to become the Dean of Business and Technology, then the Dean of Institutional Effectiveness for 12 years. She was an amazing colleague and will truly be missed.

To view her obituary, [click here](#).





POP-IN with
President Hands
SPRING 2025 OPEN OFFICE HOURS

In effort to foster open dialogue with and within the Mesa College Community, President Hands will be hosting open office hours throughout the Spring 2025 Semester.

Individual meetings will be limited to a 15 minute time block, and will be available during these dates and times:

Thursday, May 8 | 1:00 p.m. - 2:00 p.m.

To sign up, please use [this form](#). You will hear back from one of the President's Office staff members to confirm your date and time.

If you have any questions, please contact Eileen Hayward at ehayward@sdccd.edu.

Thank you for your continued engagement and support. President Hands looks forward to hearing from our campus community and values the contributions each of you brings to our collective efforts.



Each year, SDCCD evaluates workforce diversity and equity in hiring as part of the District's EEO Plan data analyses. The data consistently highlight opportunities to advance equity in employment—ultimately improving student success. Last fall, Chancellor Smith presented the findings from our five year analysis from 2018-2022 in forums at each college and the district office. Based on the findings in the EEO data analyses and feedback I've heard from many people throughout the district on how we can improve the quality and equity of our application, screening, and selection procedures, I would like to convene a workgroup to develop recommendations for new and/or revised hiring procedures.

Since most people were not able to participate in the data presentations in the fall, we are conducting a session on Tuesday, April 29th at the district office and via Zoom. The session will be recorded and available to view on our website as well.

Date & Time: Tuesday, April 29, 2025. 3:00 – 4:30 p.m.

Location: District Office, Rooms 235-255

Join Virtually: [LINK](#)

All interested SDCCD employees are invited to attend.

OFFICE OF *Instruction*

LOFT Survey Showdown! 🍪 🎉

Thanks to all of you who have taken the time to complete our LOFT Survey already! There is now a *friendly competition* between Katie and Caron on how many responses we'll get!

Right now, Classified Professionals are crushing it in our survey response numbers. Faculty and Administrators - are you just going to let that happen?

Help us out by taking this quick (5 min.) survey to shape the future of professional learning at Mesa—and be entered into a drawing for one of eight \$25 Starbucks gift cards! Your responses are confidential, and you'll be redirected to a separate form to enter the giveaway.

[🔗 Take the Survey](#)

Thank you for your time!



Mesa goes to Boston, Massachusetts (AAAS Conference & Harvard University Tour)

Dr. Hai Ly Tran took AAPI Studies Scholars - Tyler Liebel, Bennett Lai, and Kaila Stolz to the [Association for Asian American Studies \(AAAS\) Conference](#). While in town, they received a warm welcome and a personal tour of Harvard University from Lucia Lopez—Harvard student and daughter of our very own Professor Cesar Lopez!

SD MESA AANAPISI X
CULINARY PRESENTS TO
YOU...

ICE CREAM "FUN" DRAISER

ENJOY AAPI INFLUENCED
FLAVORS SUCH AS:

- *UBE W/ UBE BROWNIE BITS*
- *THAI TEA*
- *PINEAPPLE COCONUT*

\$3 A CUP

APRIL 28 - MAY 1

11:15 - 1:00PM
MESA COMMONS (MC) 210

****AVAILABLE UNTIL SOLD OUT****

SAN DIEGO
MESA COLLEGE

Culinary Arts/
Culinary Management

ASIAN AMERICAN PACIFIC ISLANDER (AAPI) COMMUNITY OF PRACTICE

APPLICATION OPEN

Join us as we learn best practices to better
serve our third-largest student population
at Mesa College!

DATE & LOCATION

- August 13, 14, 15
- San Diego Mesa College | TBD
- 9:30 - 2:30pm-

COMMITMENT

- 3-Day August Training
- Monthly Engagements
- Total: 20 hours

RSVP BY

- Friday, May 30, 2025 | 5:00pm
- First 20 Applicants Selected

RSVP Here

Classified
<https://forms.office.com/r/XEnF3vZhet>
Faculty
<https://forms.office.com/r/CmjJdvEVZht>

BENEFITS

- Understand the needs of our diverse AAPI students
- Learn about campus resources and programs to support AAPI students
- Revise and update syllabus and curriculum
- Stipend (Varies)

Contact

Leland Simpliciano | (619) 388-2406
lsimpliciano@sdccd.edu

Asian Pacific American History Month (APAHM) Kick Off - Ice Cream “Fun”draiser!

We’re kicking off Asian Pacific American History Month (APAHM) with a sweet celebration!

AANAPISI is teaming up with our Culinary Department to serve up AAPI-inspired ice cream flavors for just \$3 a cup, including:

- 1) Ube with Ube Brownie Bits
- 2) Thai Tea
- 3) Pineapple Coconut

Come treat yourself and support a good cause—this “fun”draiser is too cool to miss!

AAPI Community of Practice (Fall 2025) - Now Accepting Applications!

The Asian American Pacific Islander (AAPI) Community of Practice (CoP) is a critical professional development cohort that provides participants with opportunities to learn, contribute their knowledge and experience, and engage in promising practices to serve our AAPI students at San Diego Mesa College.

Sign up if you're interested!

[Classified Participants](#)

[Faculty Participants](#)

OFFICE OF *Student Services*

Be in a parade!

Join us this **Saturday, April 26th** at the [Linda Vista Multicultural Fair and Parade](#) on Linda Vista Road. The parade begins at 11 a.m. and parade participants will meet in the staging area around 9 a.m. (exact time is pending). If you are interested in joining the Mesa College group in the parade, please contact Jen Park at jpark002@sdccd.edu for more details.

After the parade, join us for the fair. The Linda Vista Multicultural Fair and Parade is a free annual event located at the 6900 block of Linda Vista Road (between Comstock and Ulric) and takes place from 10 a.m. until 5 p.m. This year, Mesa College is proud to be the Parade Sponsor! Bring your family and friends to enjoy food, art, music, performances, crafts, rides, games, and even a lumpia eating contest!

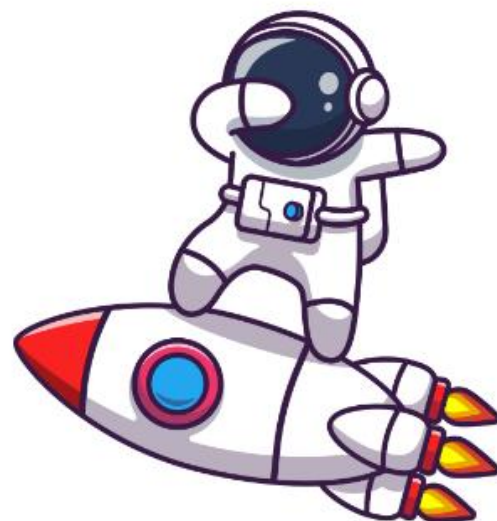
[Access the flyer for the event here.](#)

New Issue Alert

[Click here for the latest Mesa Journeys Newsletter!](#)

The Mesa Journeys newsletter gives a more in-depth look at all the great things that are happening on our campus. We encourage all faculty and staff to pass this along to our students, and also to sign up to receive these newsletters straight to their inboxes! Click below to sign up and for more information about Mesa Journeys:

<https://linktr.ee/mesajourneys>



Puente Day at SDSU

On April 11th, SDSU welcomed 5 Puente campuses from the San Diego region. EOPS/Outreach organized the day with keynote Chief Diversity Officer of Student Affairs, Emilio Ulloa, to welcome the students.

Puentistas from Mesa College learned about the programs SDSU offers, took a tour and listened to a student panel talk about their Puente transfer experience to SDSU, which included two former Mesa students, Ruby Arellano (Puente 23/24) and Abraham Beas (Puente 22/23).

They ended the day at the Aztec Lanes with some fun and recreation, just like the students at SDSU do!



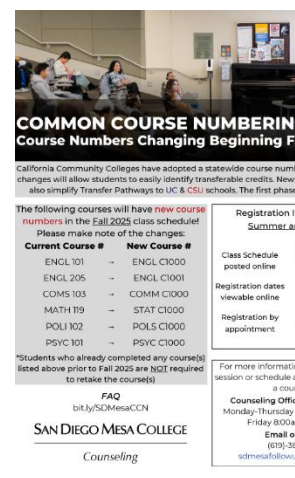
We are delighted to extend our warm invitation to join us in honoring the remarkable achievements of the class of 2025 during our upcoming Commencement Ceremony, set to take place on Friday, May 30th, at 2:00 p.m. at the Merrill Douglass Stadium.

We kindly request your assistance with various aspects of the day, including student check-in, wayfinding, Information booth, logistical support, and more. There is a myriad of roles to be filled, and your involvement is paramount to our collective success.

To volunteer your time and expertise for this momentous event, please complete the [Commencement Volunteer Registration form](#). For any inquiries or further information, please do not hesitate to reach out to me or my Co-Coordinator Liza Abuyo at awoods002@sdccd.edu or fabuyo@sdccd.edu.

Click on the flyer to enlarge.





For more student events, please click the Mesa Journeys link above

OFFICE OF *Administrative Services*

As we gear up to celebrate our incredible Classified Professionals at the upcoming **Classified Service Awards: Flourishing Through Service** on **May 14th**, we want to send a gentle reminder that the **deadline to donate a "Gift of Gratitude Basket"** is quickly approaching!

These themed gift baskets will be raffled off during the event to raise funds for **Classified Scholarships** and **Professional Development**—and your contribution can help make a big impact.

☀️ **How You Can Help**

We're inviting departments, teams, or individuals to get creative and assemble a **Gift of Gratitude Basket** filled with fun, thoughtful, or themed items. Ideas include self-care kits, movie night bundles, snack packs, or anything uplifting and community-spirited!

📦 **Basket Submission Deadline:**

Please drop off your completed basket to **Thieny Trinh** in **MS-301** by **Wednesday, May 1st at 3:00 PM**.

🏆 **Bonus!**

The most creative basket submitted by the deadline will receive a **\$100 gift card!**

Thank you for helping us celebrate and uplift our classified professionals during this joyful season of flourishing. Your generosity truly makes a difference in supporting student success and strengthening our Mesa community!



FOUNDATION CORNER

A space to learn about our latest efforts to connect partners who share our passion for education with opportunities to give. See how fundraising can help you, our students, and Mesa's mission.

[Learn More](#)



We joyfully invite you to celebrate with us at the **32nd Annual Scholarship Awards Ceremony**! This year, thanks to all of you, we are able to award **over \$150,000** in scholarships to **155 students**!

We are asking departments, shared governance groups and interested individual community members to help support the **32nd Annual Scholarship Awards Ceremony**. There are three ways that you can support this memorable celebration of student achievement:

[Purchase or donate tickets!](#)

General tickets are \$30, student tickets are \$20, children's tickets are \$10, and babies under 2 years attend for free. Can't attend but want to support? Donate a ticket that will go to help cover the cost of student scholarship recipients and those who face financial barriers. To help this way:

[Become a Sponsor!](#)

There are many opportunities for individuals, groups and organizations to support this great cause and receive recognition! It is our generous sponsors who make it possible to shine a light on our students at this event and ensure that our scholarship recipients are able to attend for free. Contact Krista Stellmacher (kstellmacher@sdccd.edu) if you have any questions. To help this way:

[Donate Items or Services!](#)

For those who would like to support the event without donating funds, we welcome gifts of items or services! These are usually provided in the form of a gift basket, and we can help assemble your items for you if you need assistance. Contact Student Affairs (619-388-2699) if you have questions or would like support. To help this way:

Bring your basket to the Student Affairs Office (14-408) before 4pm on Monday, April 28

Participatory Governance

To learn more about our Associated Students, Academic Senate, and Classified Senate, please visit the links below:

[Associated Students](#)

[Academic Senate](#)

[Classified Senate](#)

In The Know

For additional information on what is happening on campus and in our community - visit the links below:

[Mesa College Newsroom](#)

[Mesa College Events Calendar](#)

Ashanti Hands, Ed.D.

President | San Diego Mesa College

Creating conditions that matter for our students to succeed!

7250 Mesa College Drive, A-104, SD, CA 92111 | 619.388.2721

[Mesa College](#) | [Student Support Services](#)

