

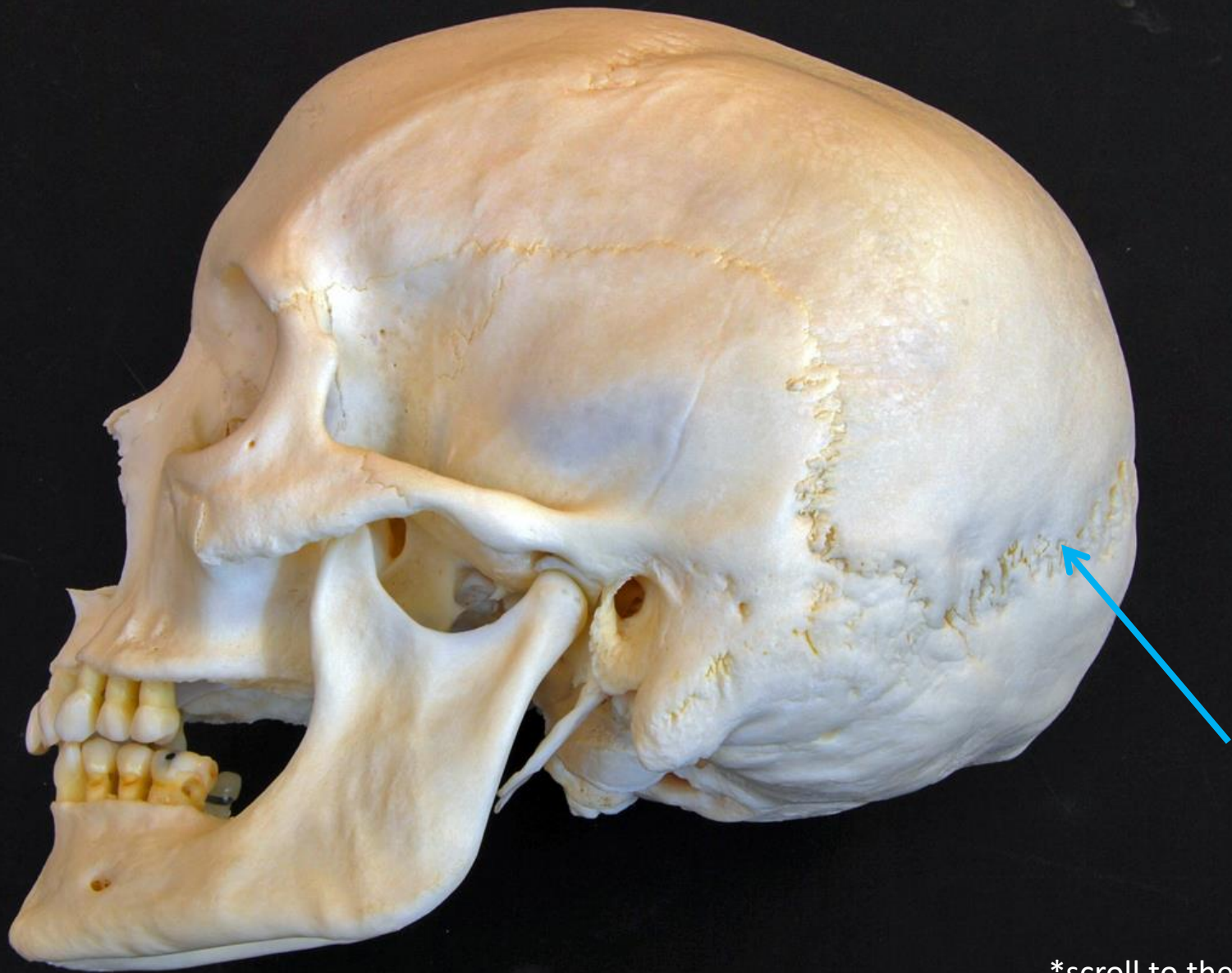
Bone

Practice Exam #2

Name the following structures indicated by the arrows.
Scroll to the next slide to see the answer.

*For best results on these practice exams, write your answers on paper before scrolling to see the correct answer. Try to answer within a minute (remember your lab exams will be timed) and make sure to check your spelling!

*note: not every structure you are required to know will be on this practice exercise so make sure you review the checklist of structures (p. 74-75 in your lab manual) when preparing for your lab exam



*scroll to the next
slide to check your
answer



Lambdoid suture



*scroll to the next
slide to check your
answer

Supraorbital margin
of frontal bone

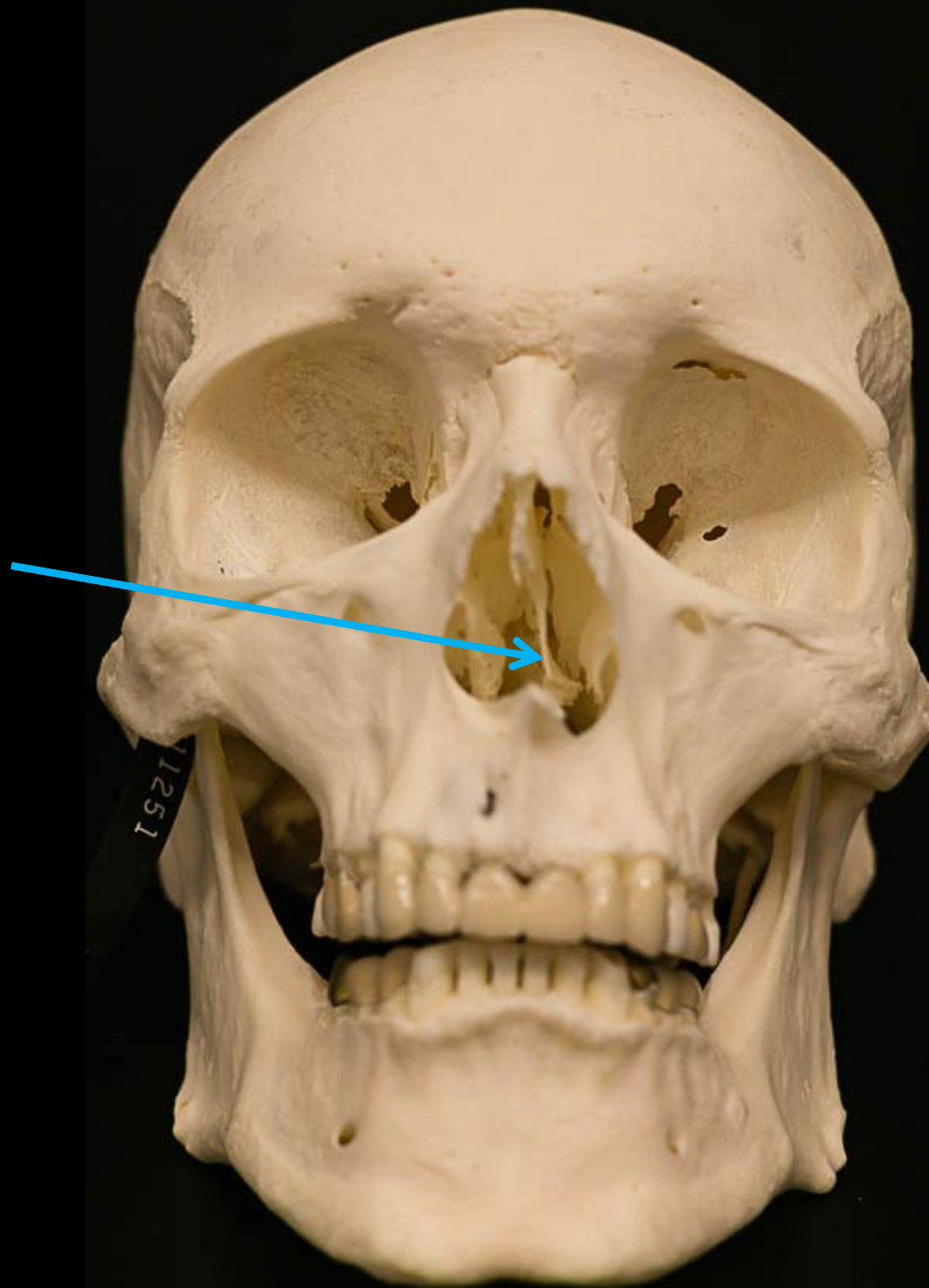




*scroll to the next
slide to check your
answer

Superior articular facet of C2





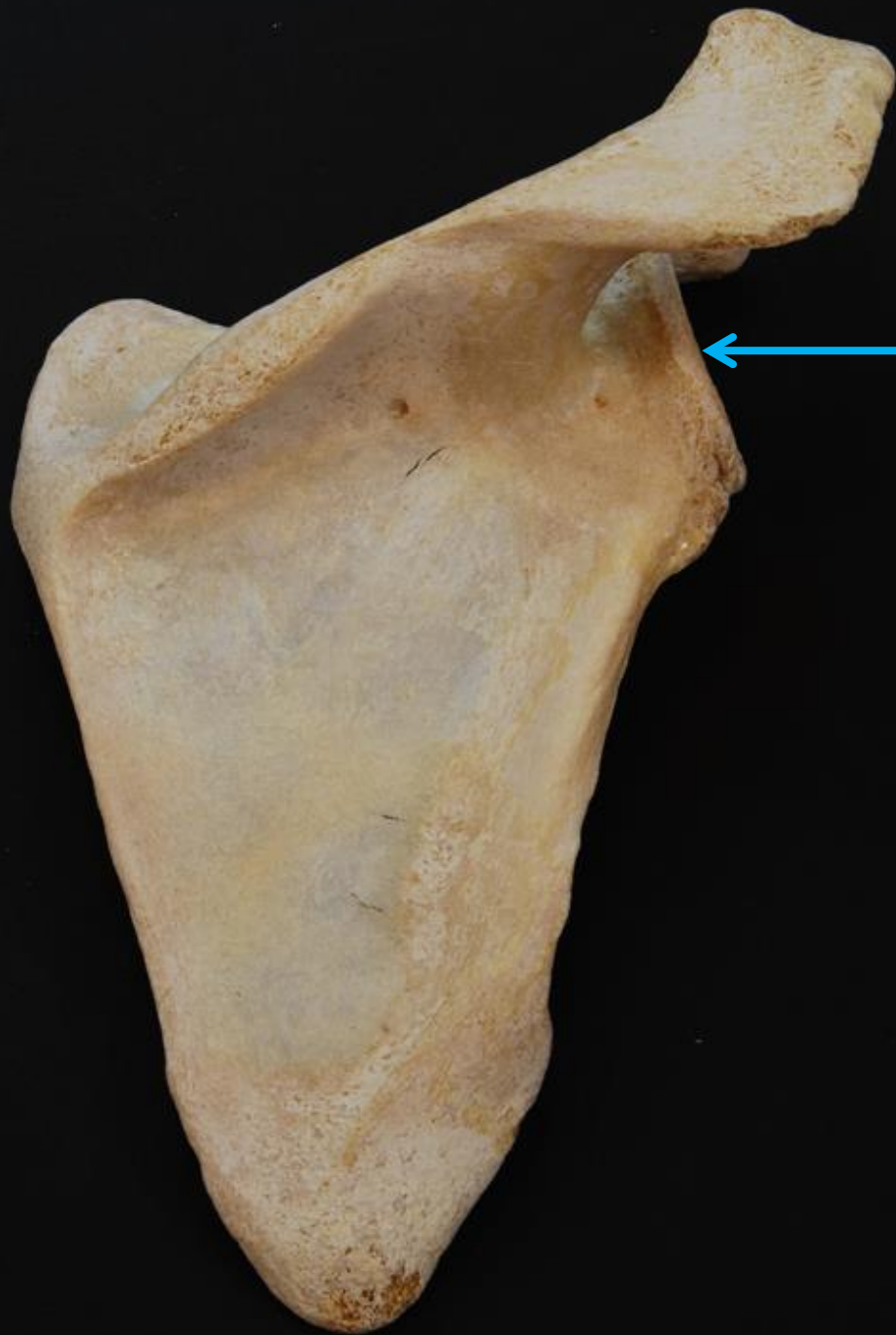
*scroll to the next
slide to check your
answer

Vomer





*scroll to the next
slide to check your
answer



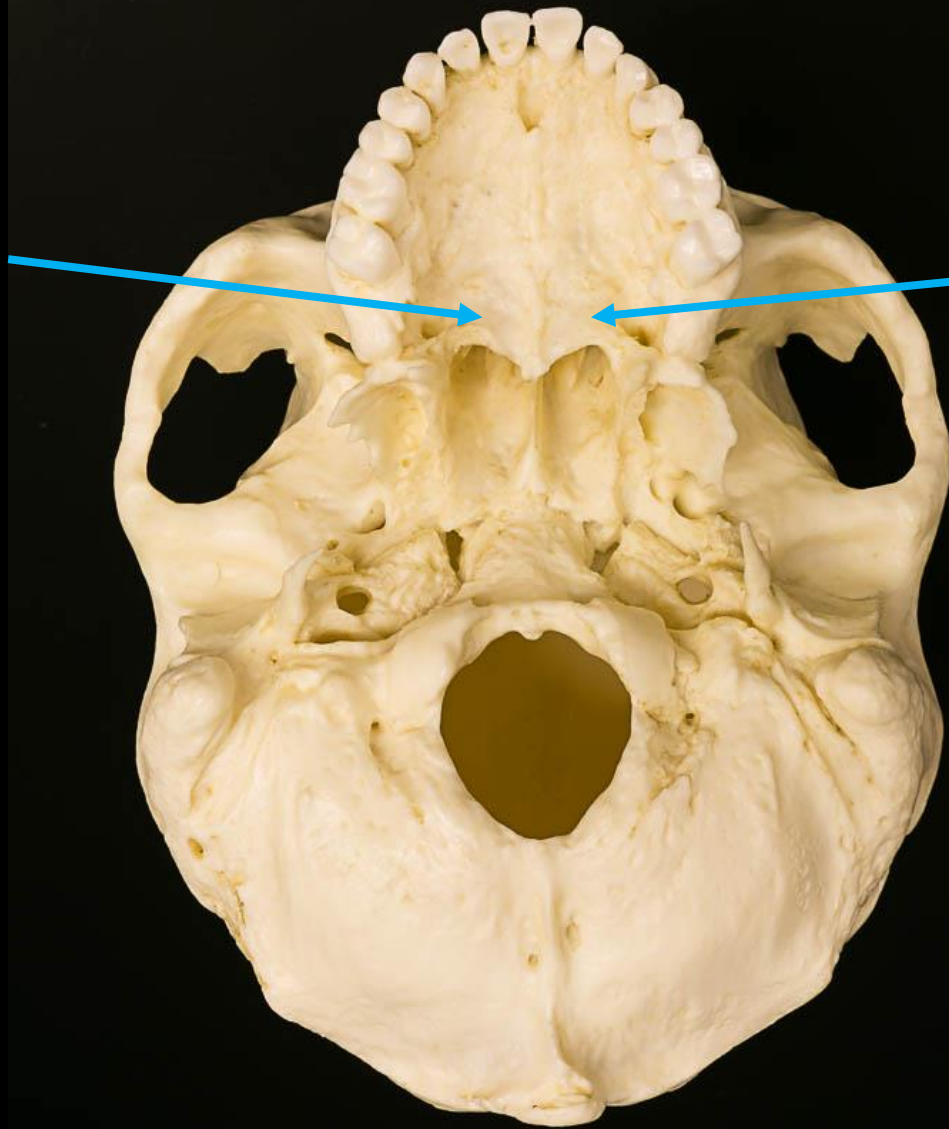
Glenoid fossa (cavity)
of the scapula



*scroll to the next
slide to check your
answer

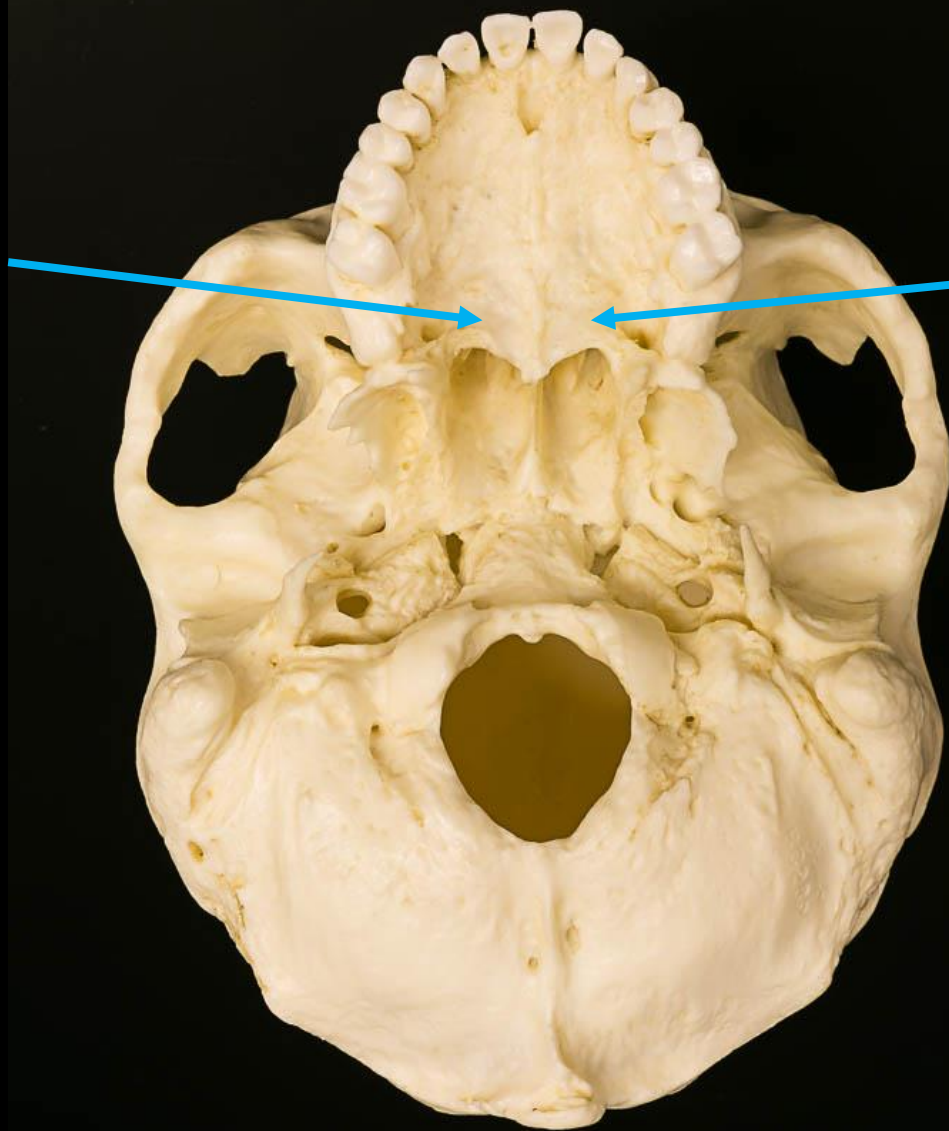


Zygomatic bone



*scroll to the next
slide to check your
answer

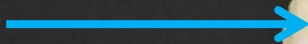
Palatine bone

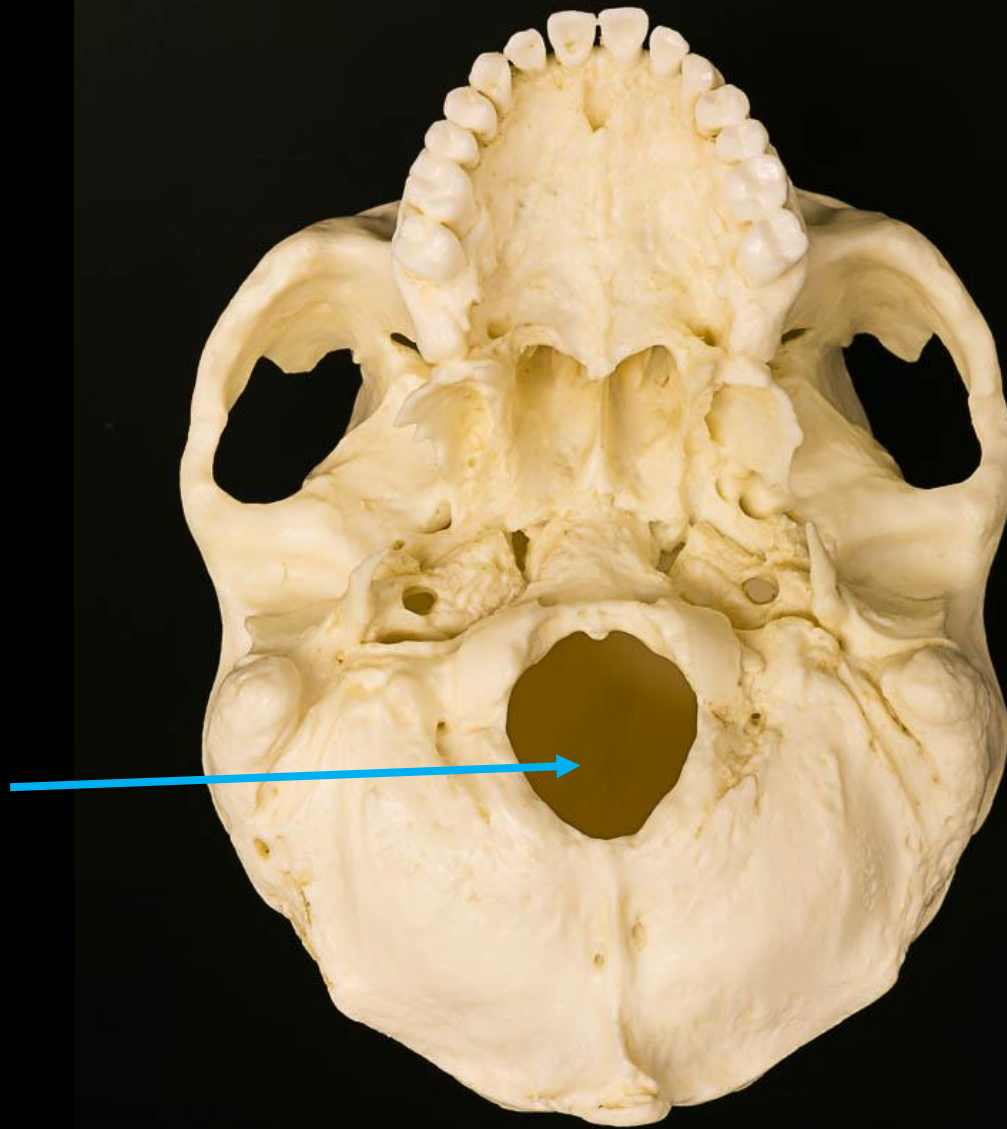




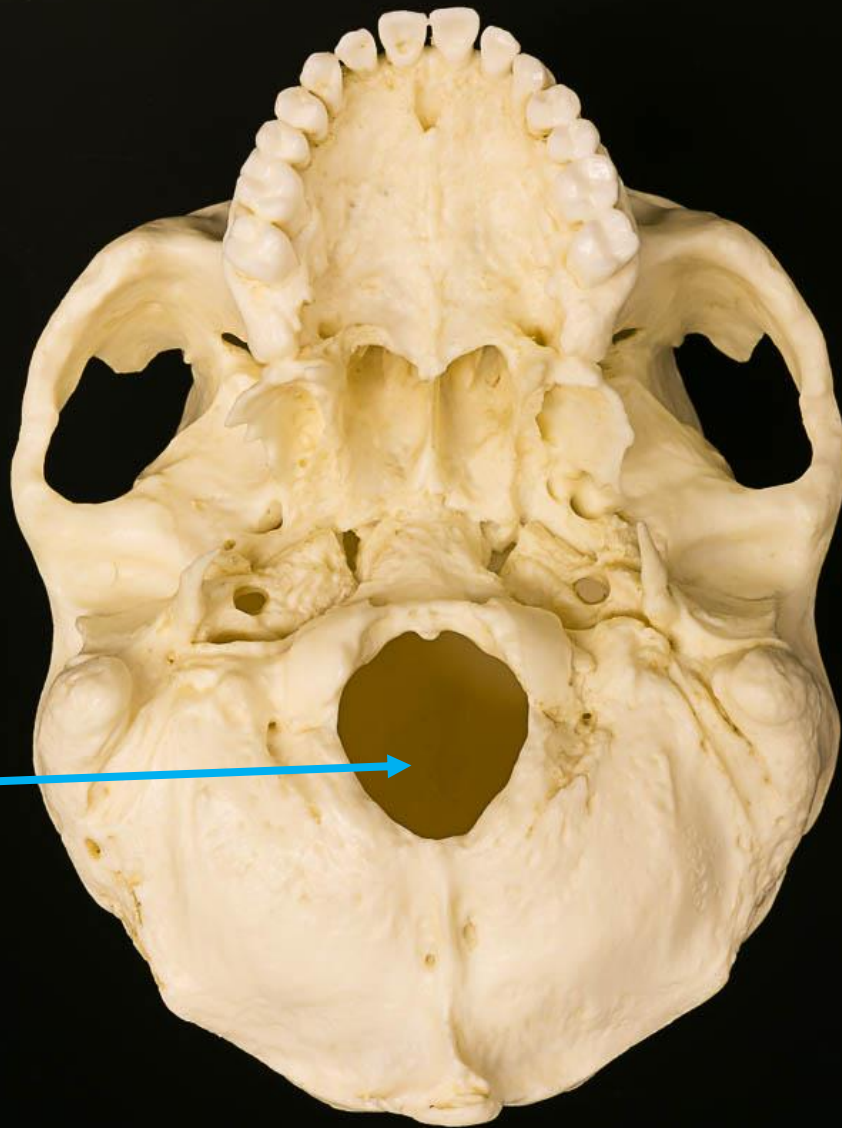
*scroll to the next
slide to check your
answer

Head of femur





*scroll to the next
slide to check your
answer



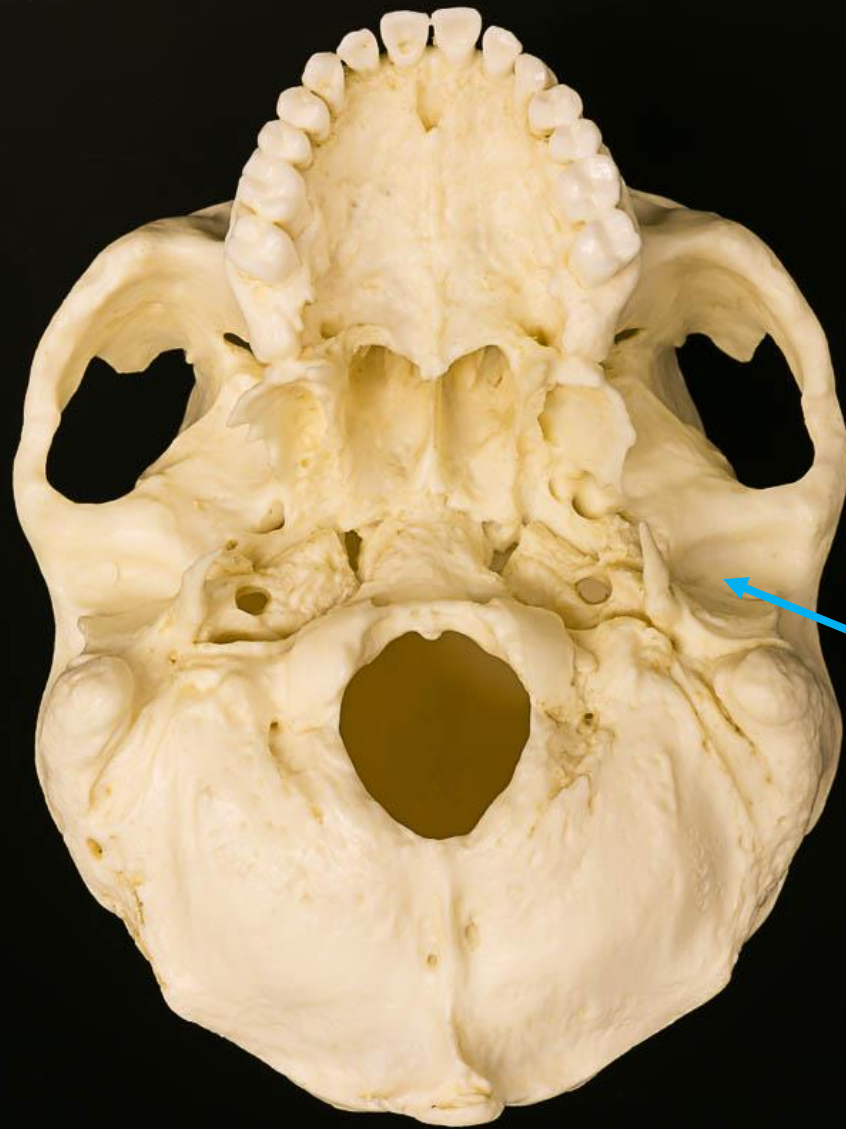
Foramen magnum of
occipital bone



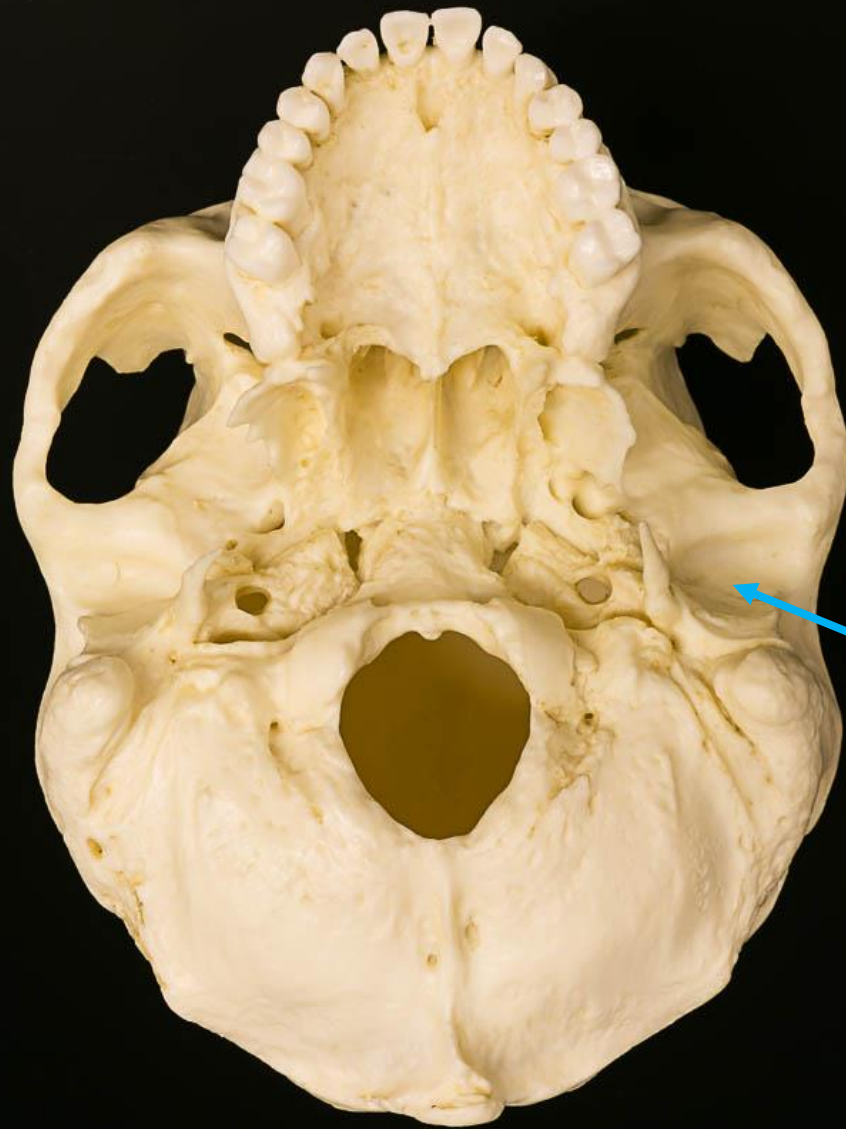
*scroll to the next
slide to check your
answer

Styloid process
of ulna

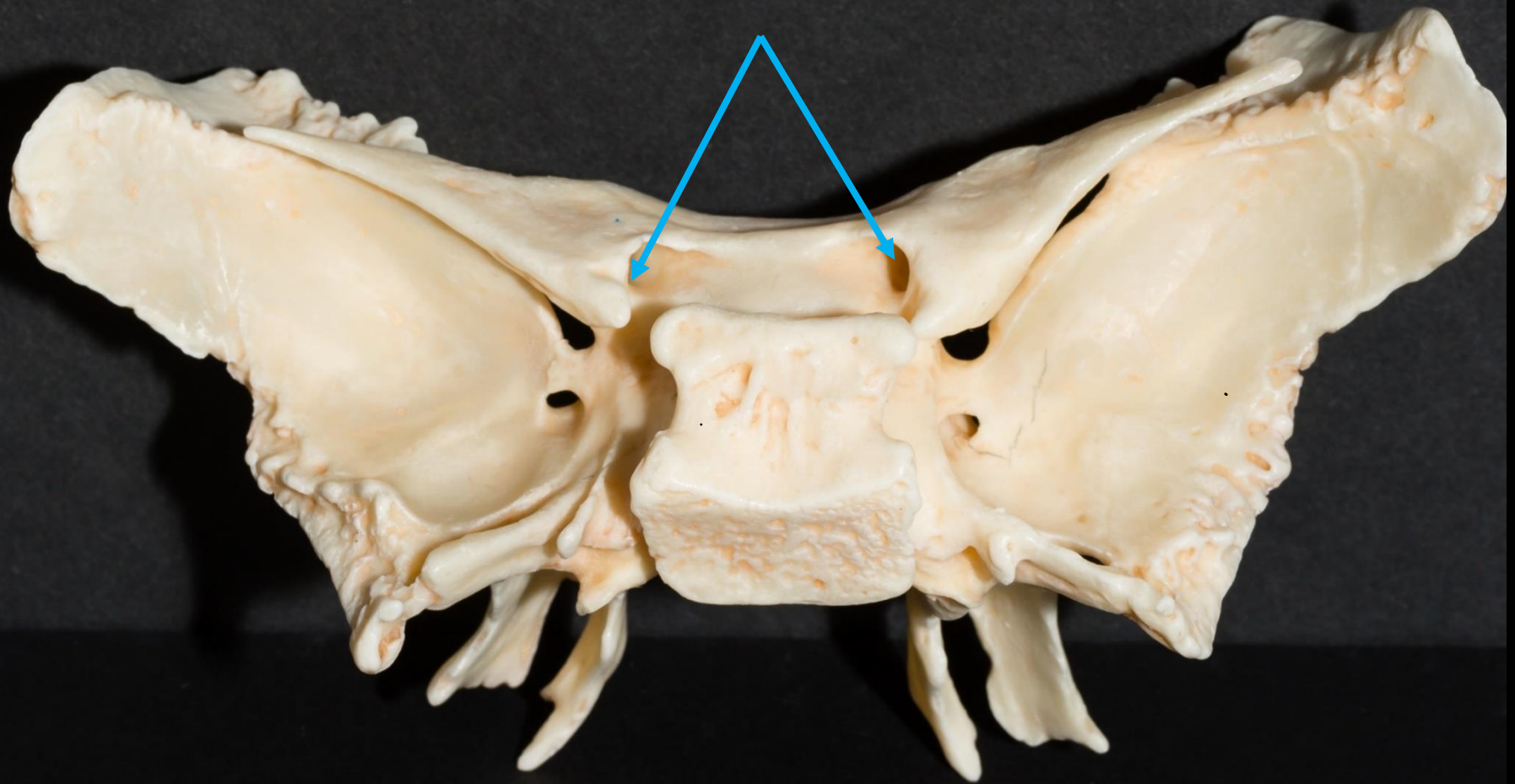




*scroll to the next
slide to check your
answer

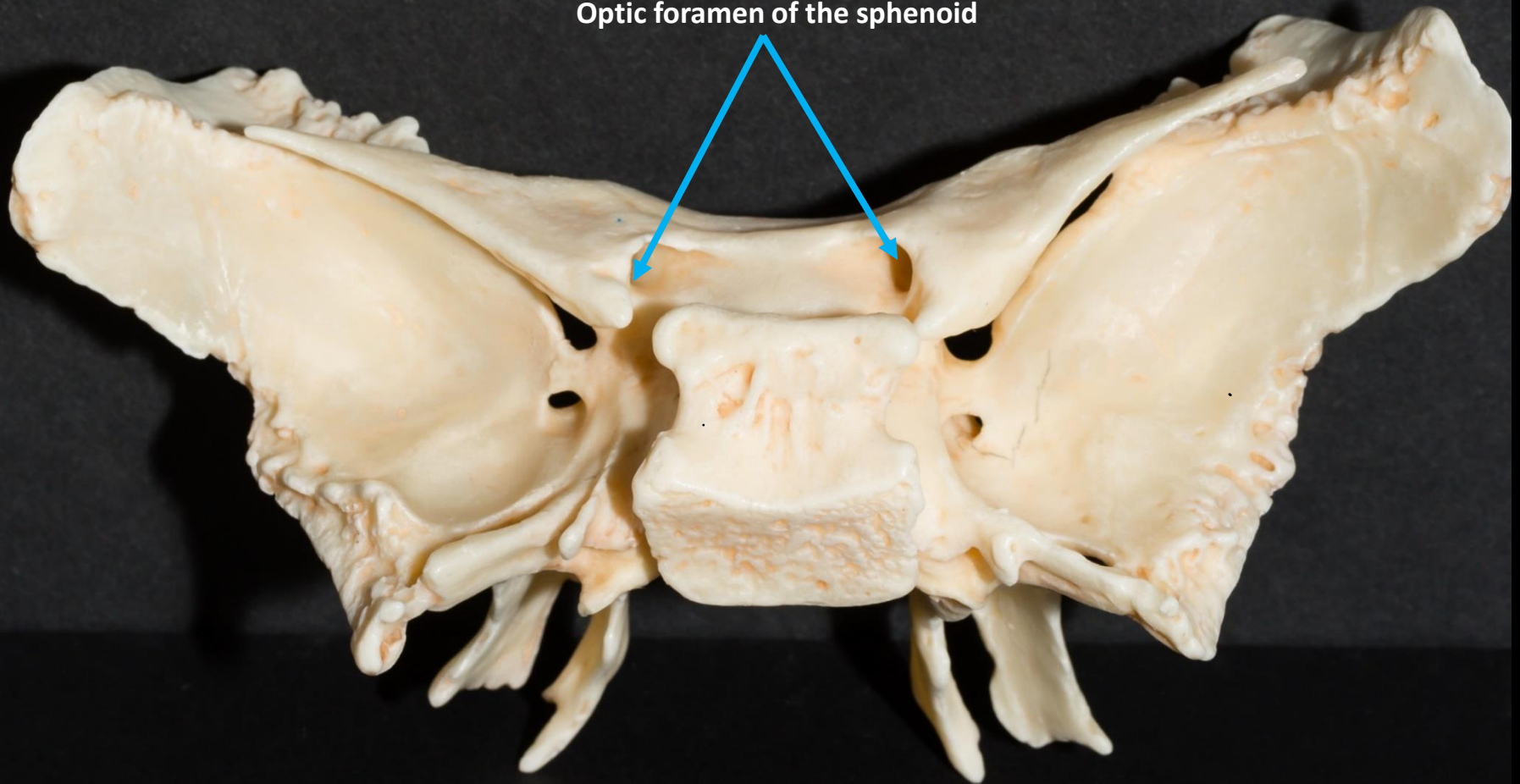


**Mandibular fossa
of the temporal
bone**



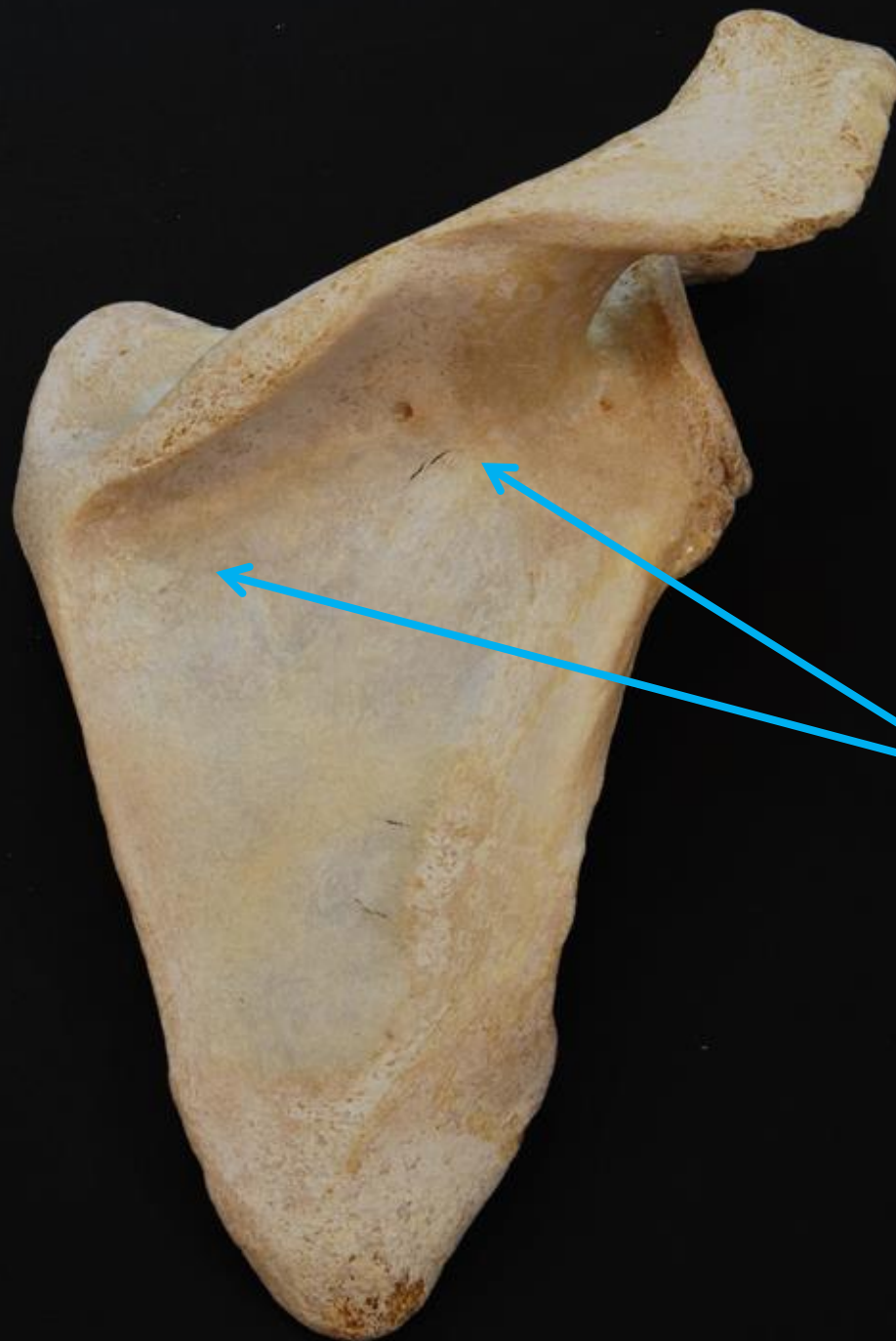
*scroll to the next
slide to check your
answer

Optic foramen of the sphenoid

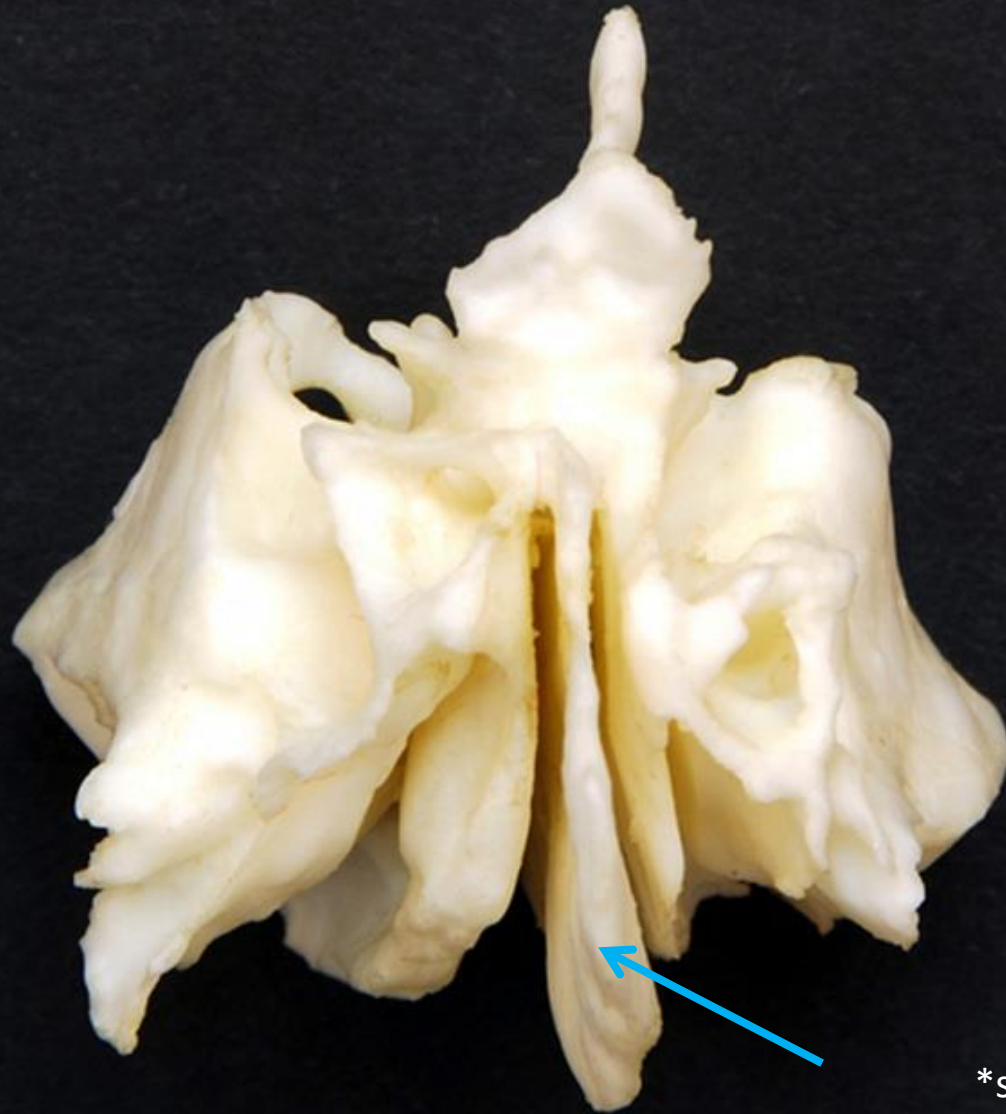




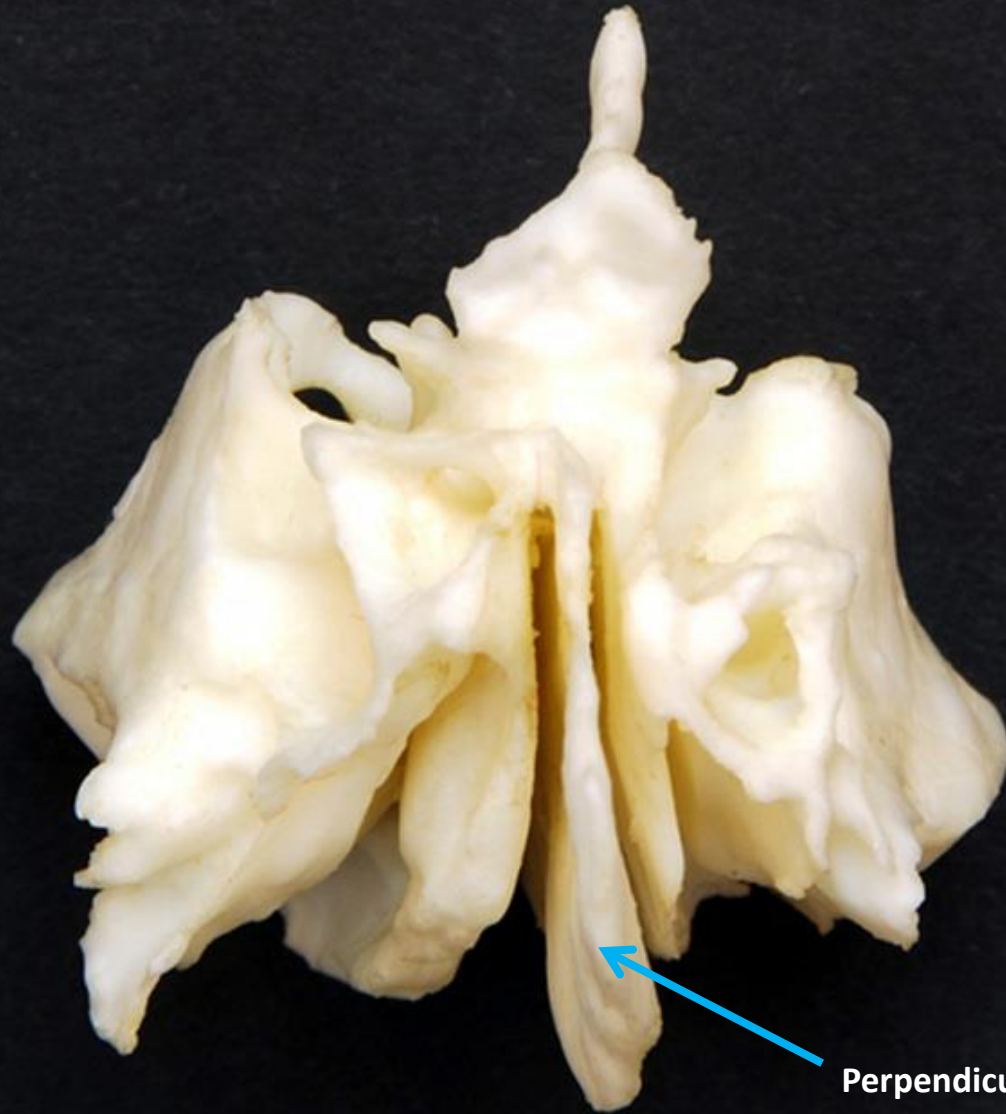
*scroll to the next
slide to check your
answer



Infraspinous fossa of
the scapula



*scroll to the next
slide to check your
answer



Perpendicular plate of ethmoid



*scroll to the next
slide to check your
answer



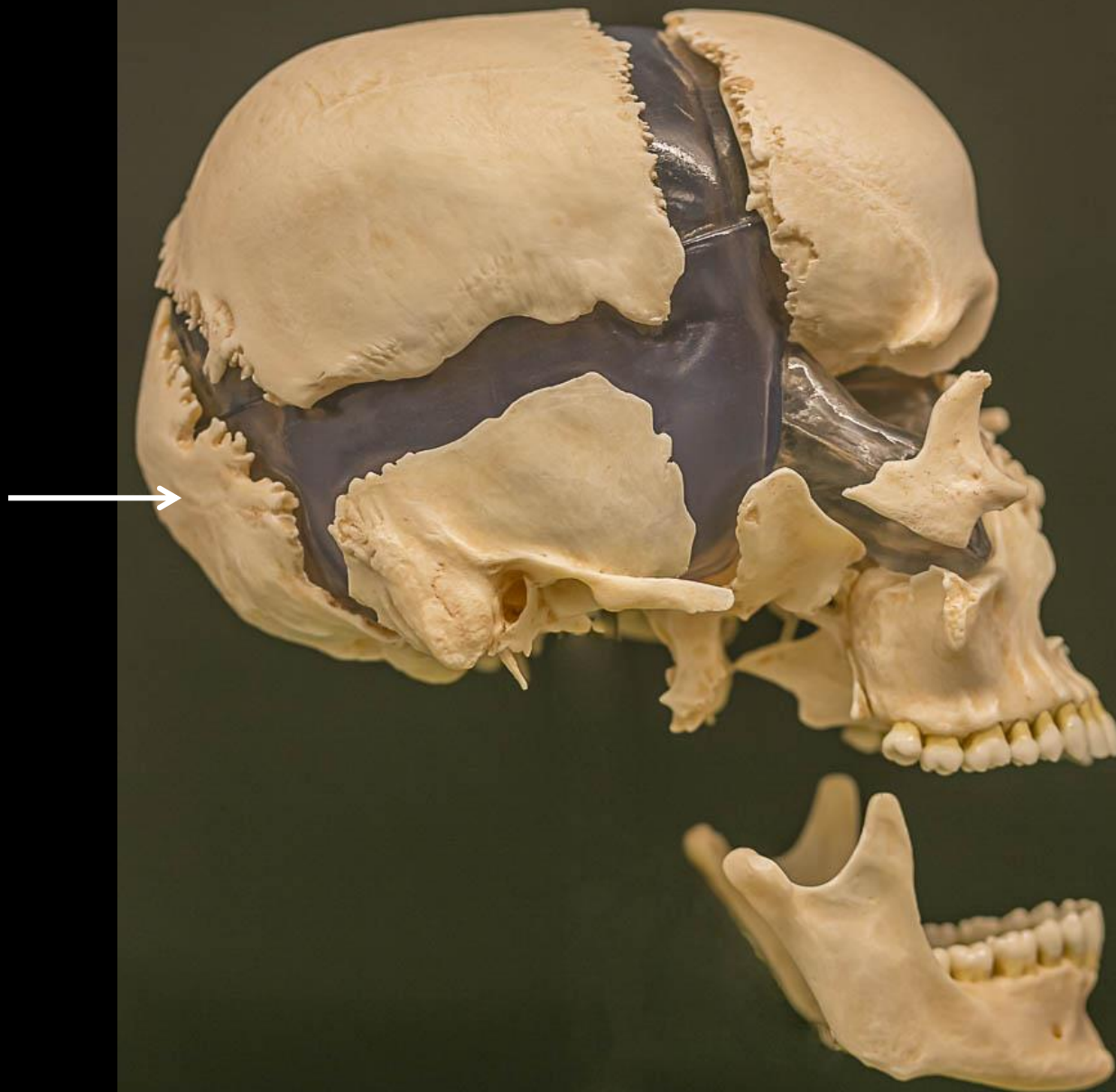
Mastoid
process of
temporal
bone



*scroll to the next
slide to check your
answer



← Frontal bone



*click to the next
slide to check your
answer

Occipital bone →





*scroll to the next
slide to check your
answer



Transverse foramen of C1

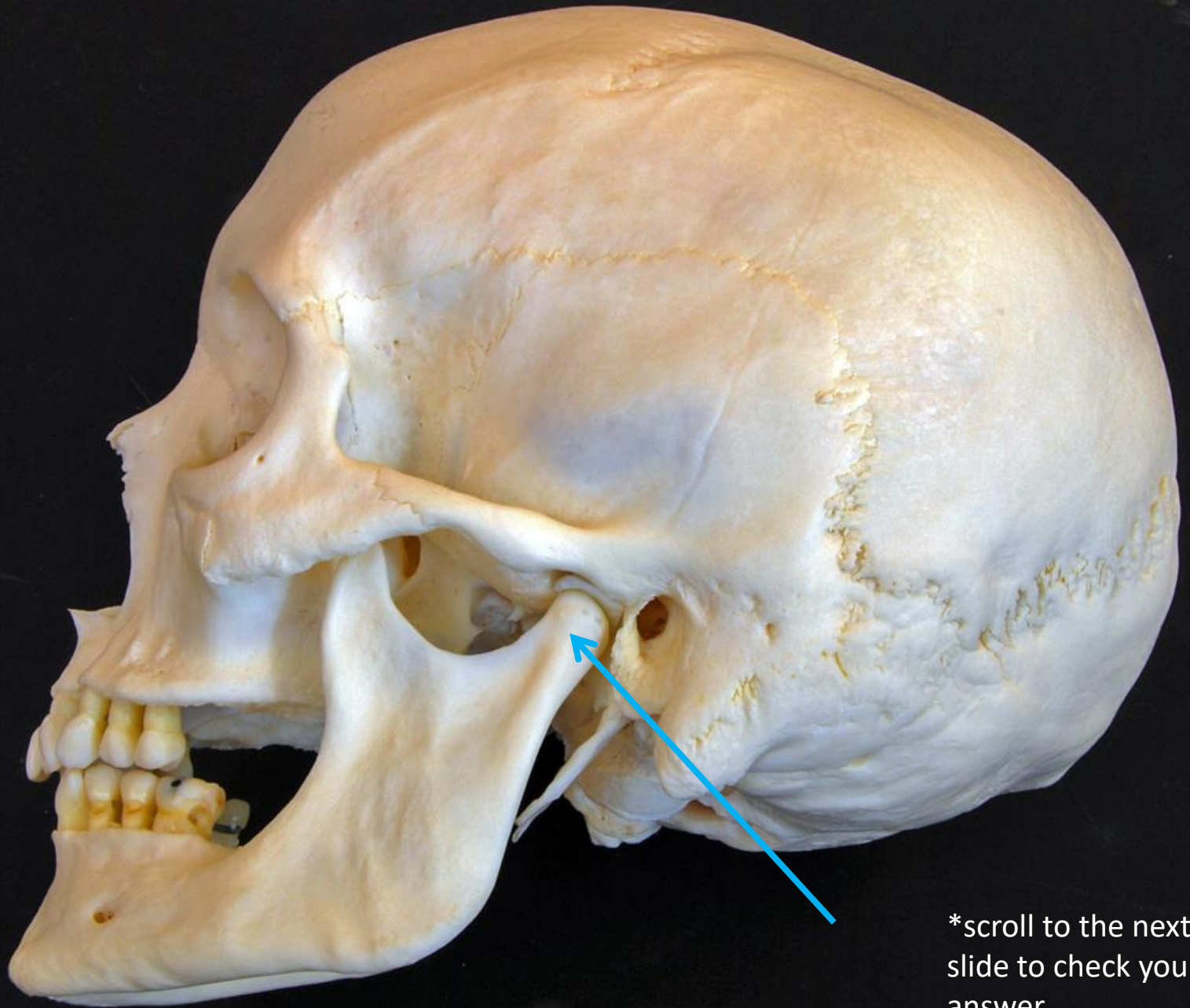




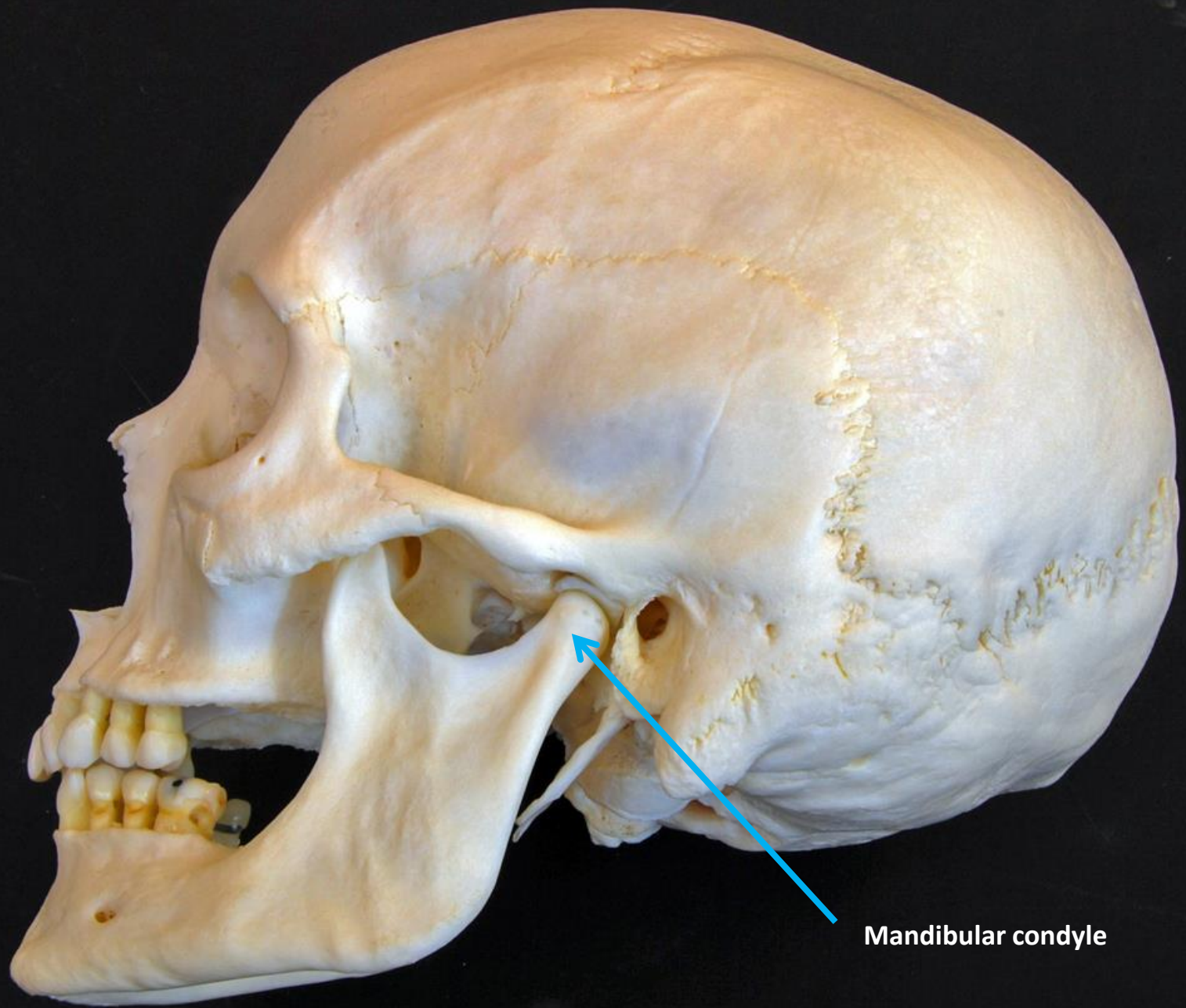
*scroll to the next
slide to check your
answer

Transverse costal facet of thoracic

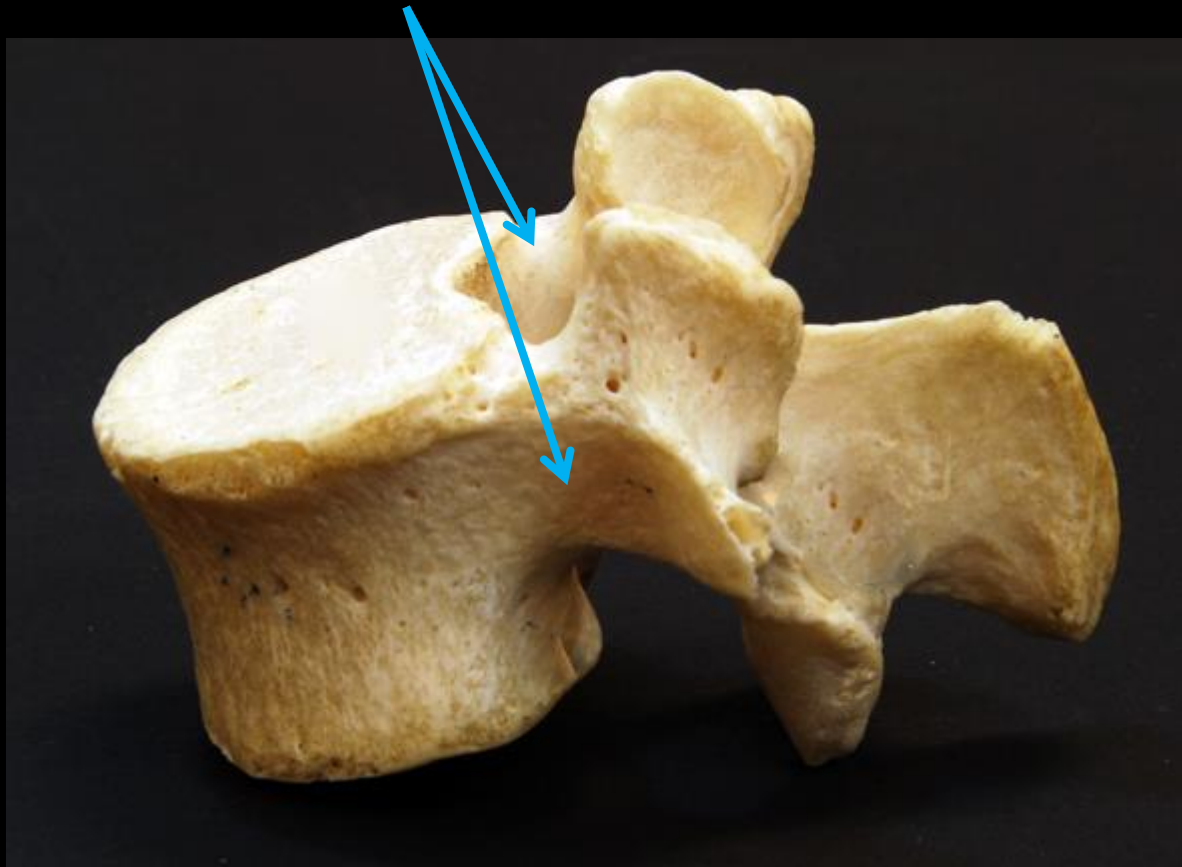




*scroll to the next
slide to check your
answer

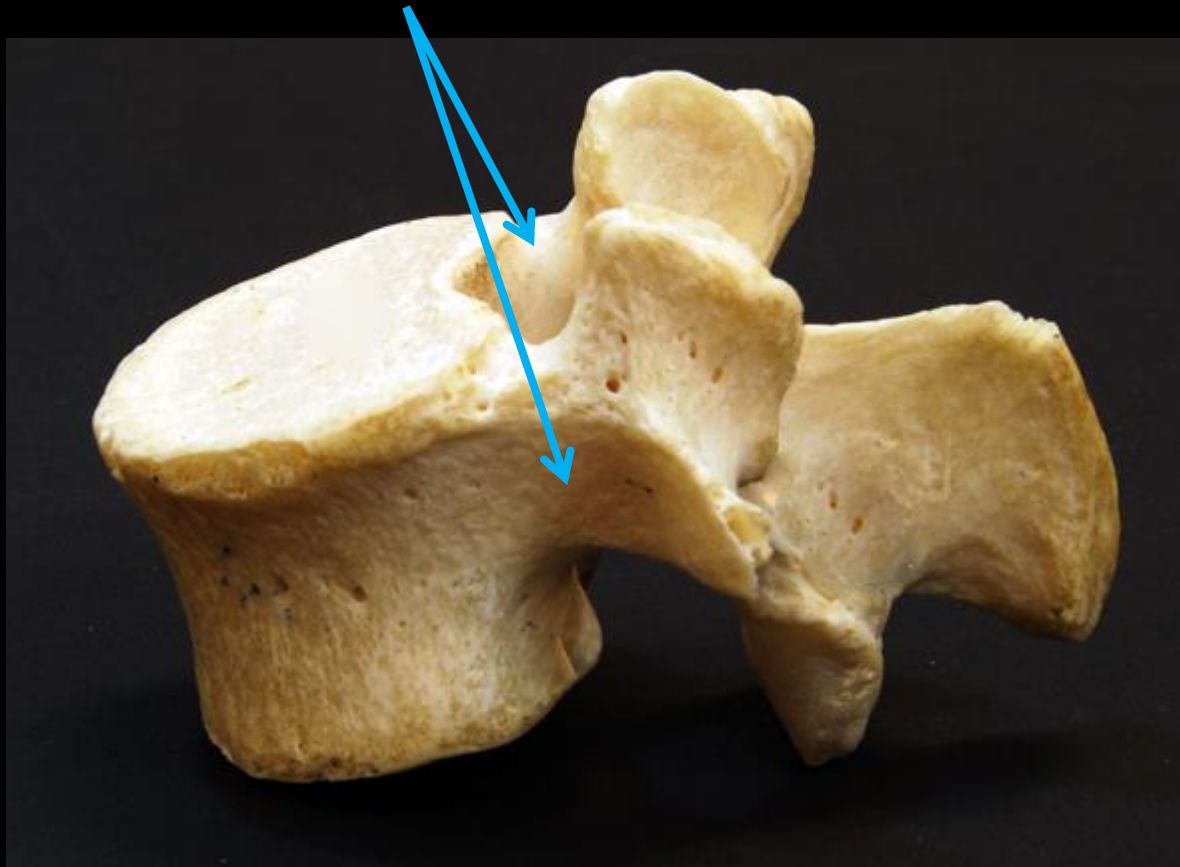


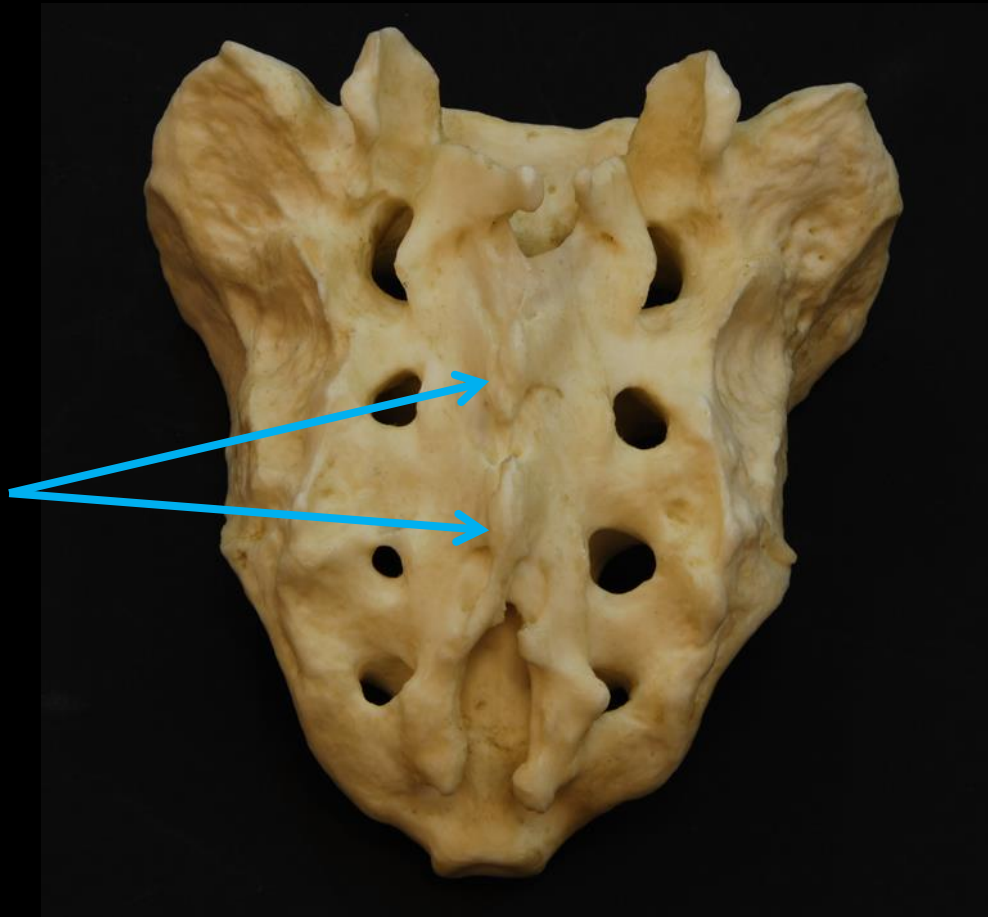
Mandibular condyle



*scroll to the next
slide to check your
answer

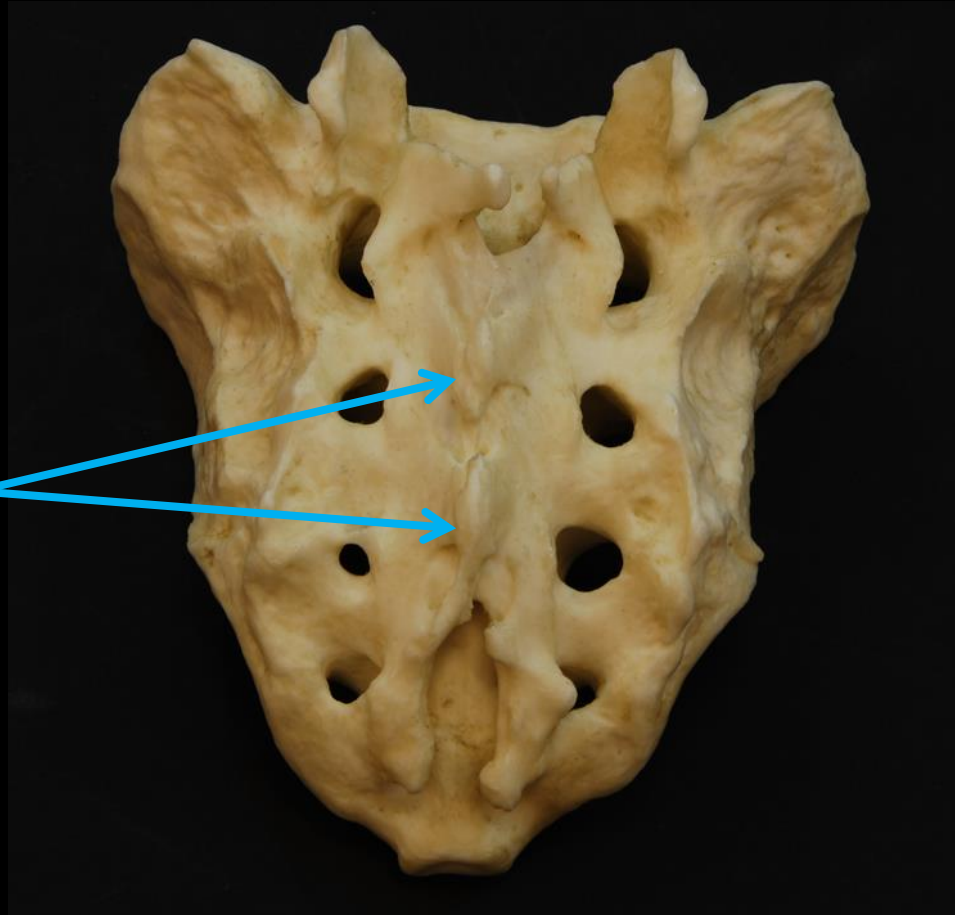
Pedicle of lumbar vertebra





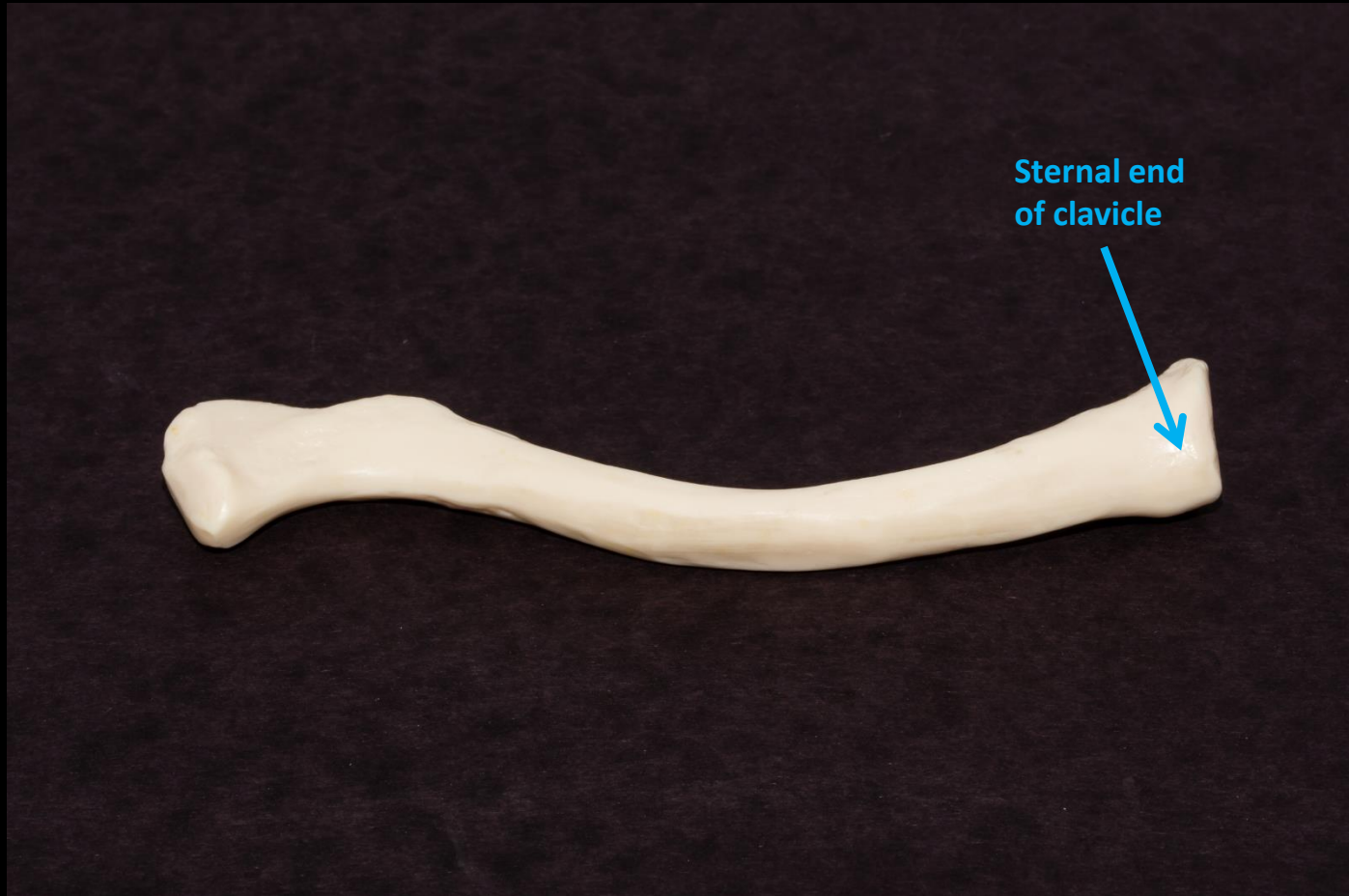
*scroll to the next
slide to check your
answer

Median sacral crest





*scroll to the next
slide to check your
answer





*scroll to the next
slide to check your
answer

Acromion
(acromial
process) of
the scapula





*scroll to the next
slide to check your
answer

Head of
humerus





*scroll to the next
slide to check your
answer

Ulna notch
of radius





*scroll to the next
slide to check your
answer

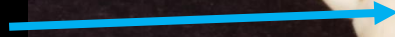


Trochlear notch
of ulna



* scroll to the next
slide to check your
answer

Lunate





* scroll to the next
slide to check your
answer

Hamate

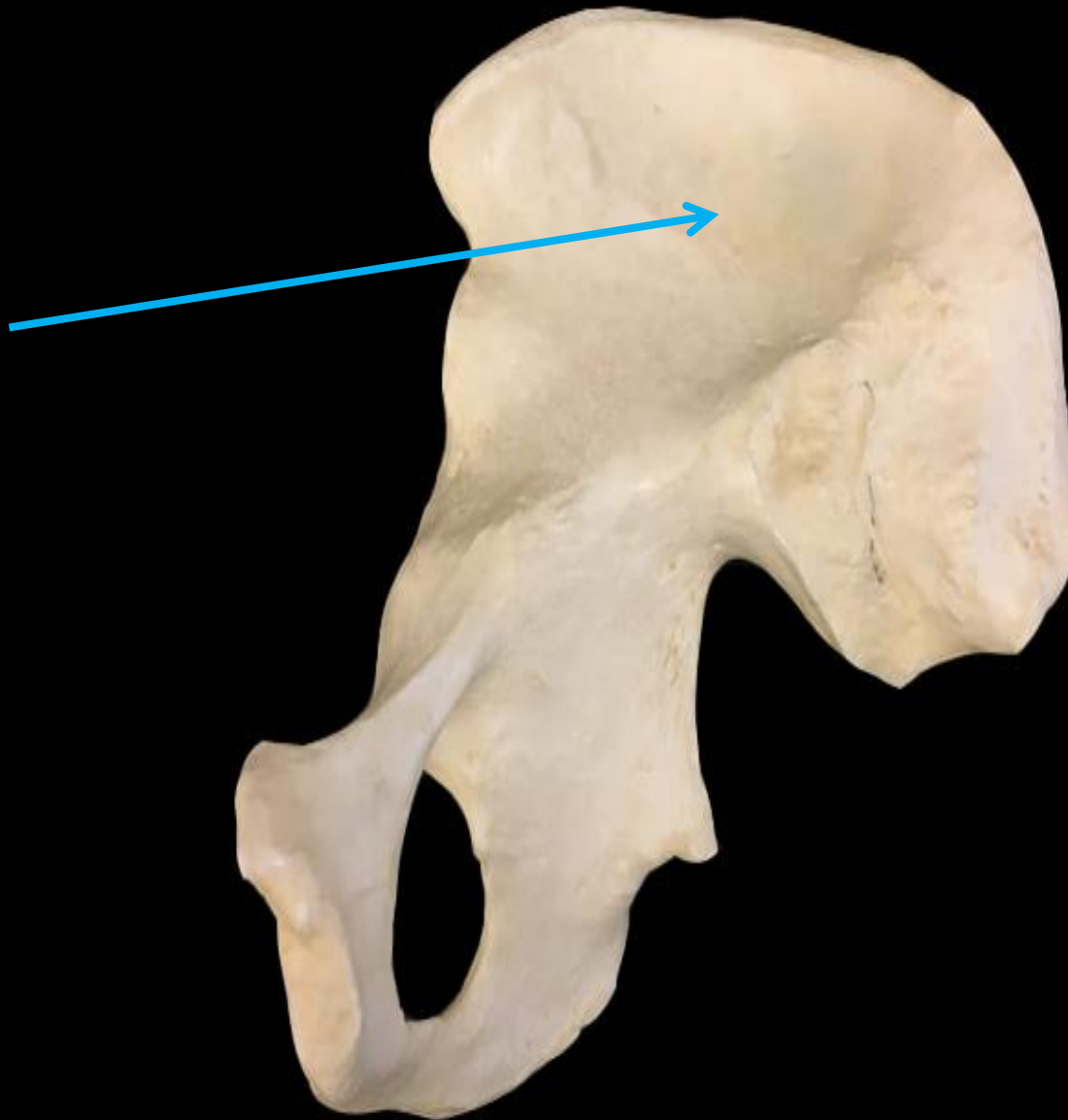




* scroll to the next
slide to check your
answer



Base of metatarsal I



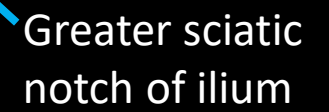
* scroll to the next
slide to check your
answer

Iliac
fossa





* scroll to the next
slide to check your
answer





* scroll to the next
slide to check your
answer



Lesser trochanter of femur



* scroll to the next
slide to check your
answer

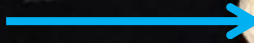


Medial malleolus of tibia



* scroll to the next
slide to check your
answer

Head of fibula

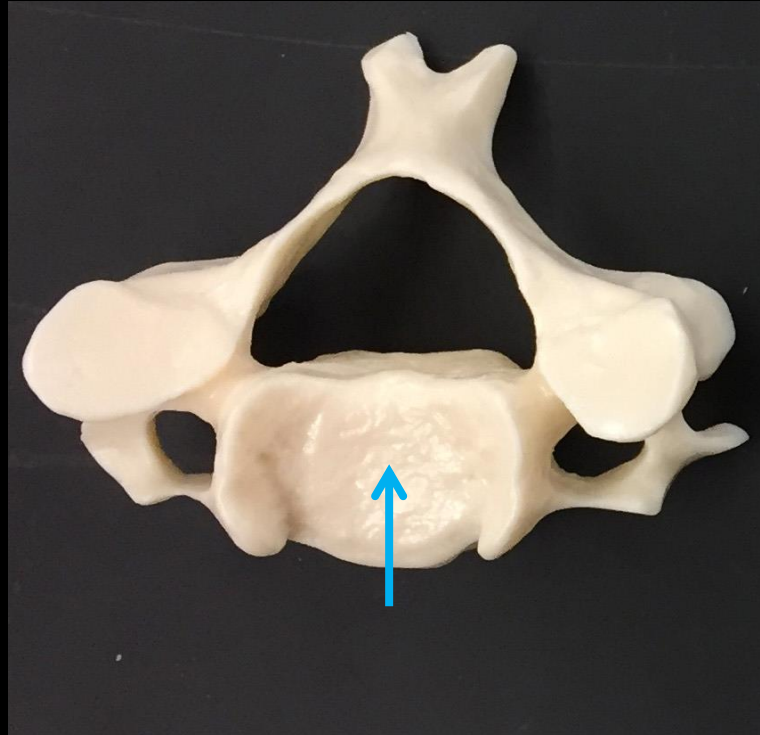




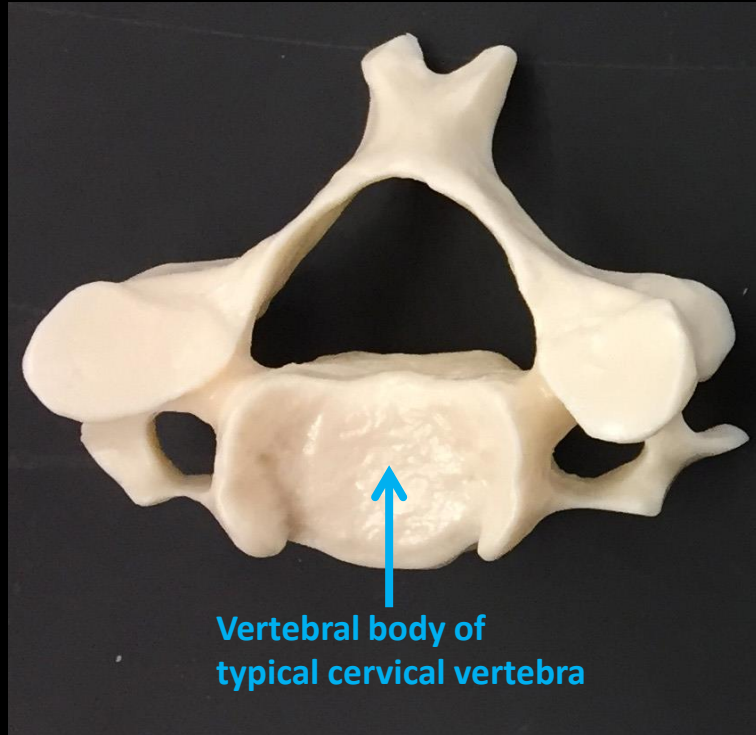
* scroll to the next
slide to check your
answer

Tubercle
of rib

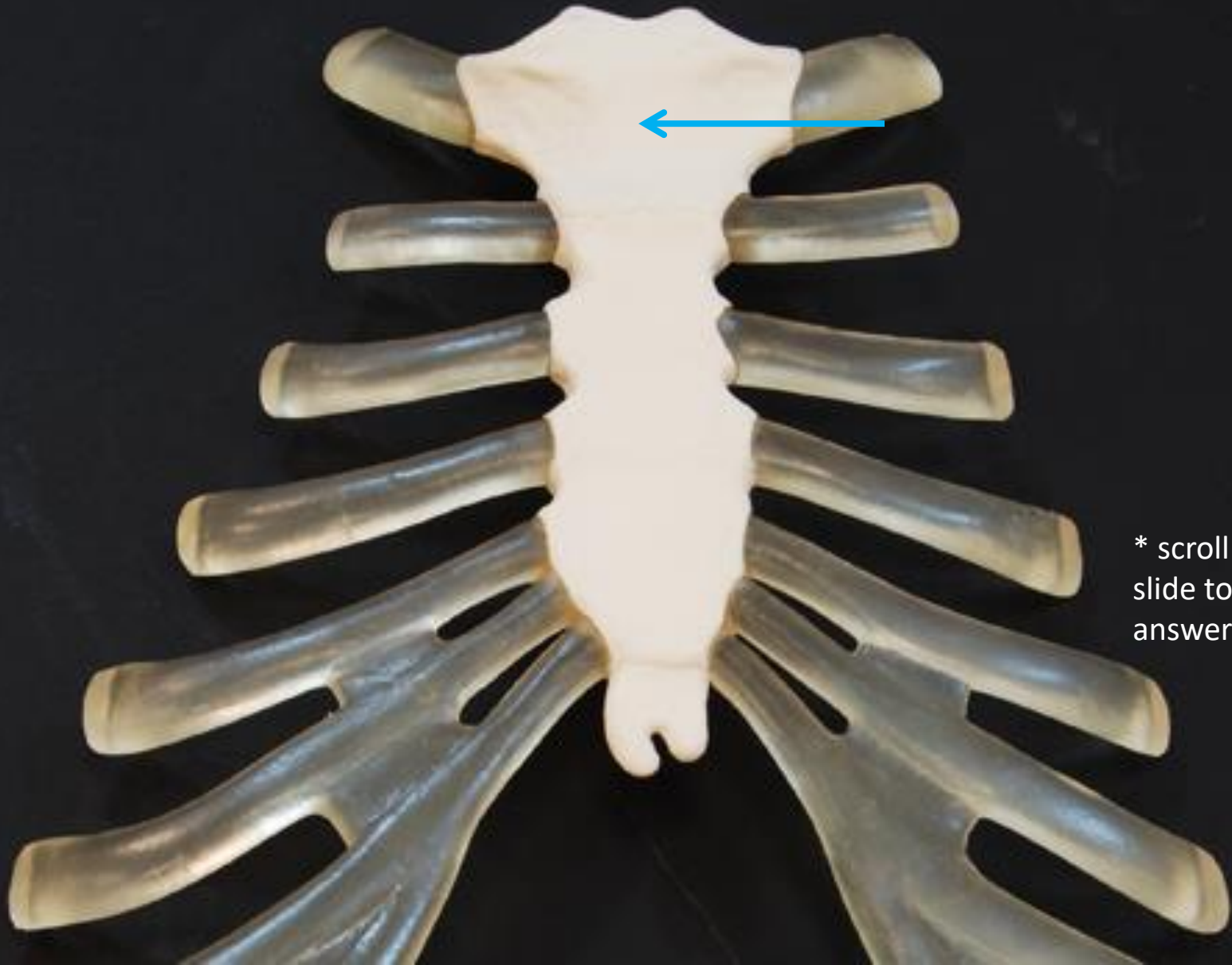




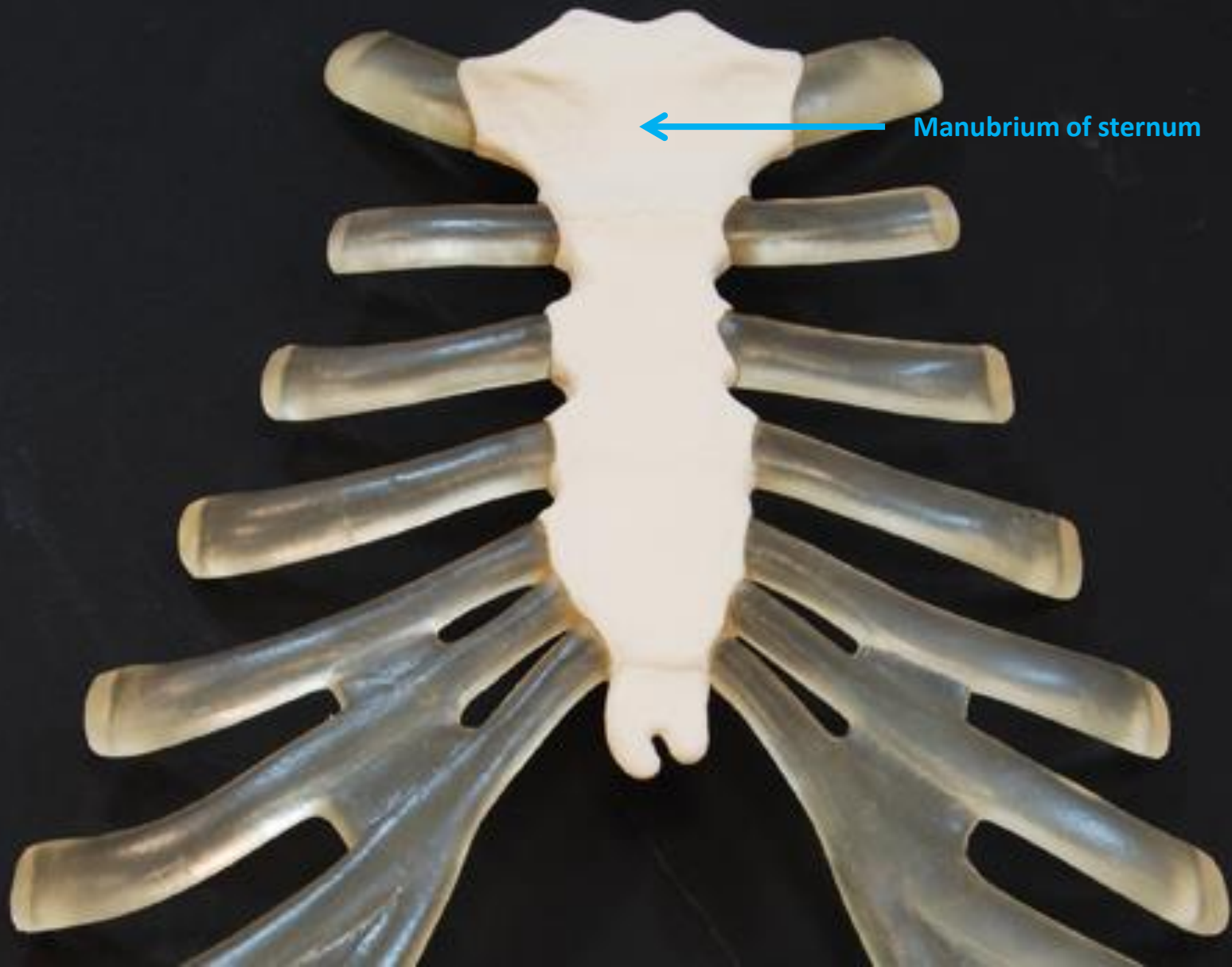
* scroll to the next
slide to check your
answer



Vertebral body of
typical cervical vertebra



* scroll to the next
slide to check your
answer

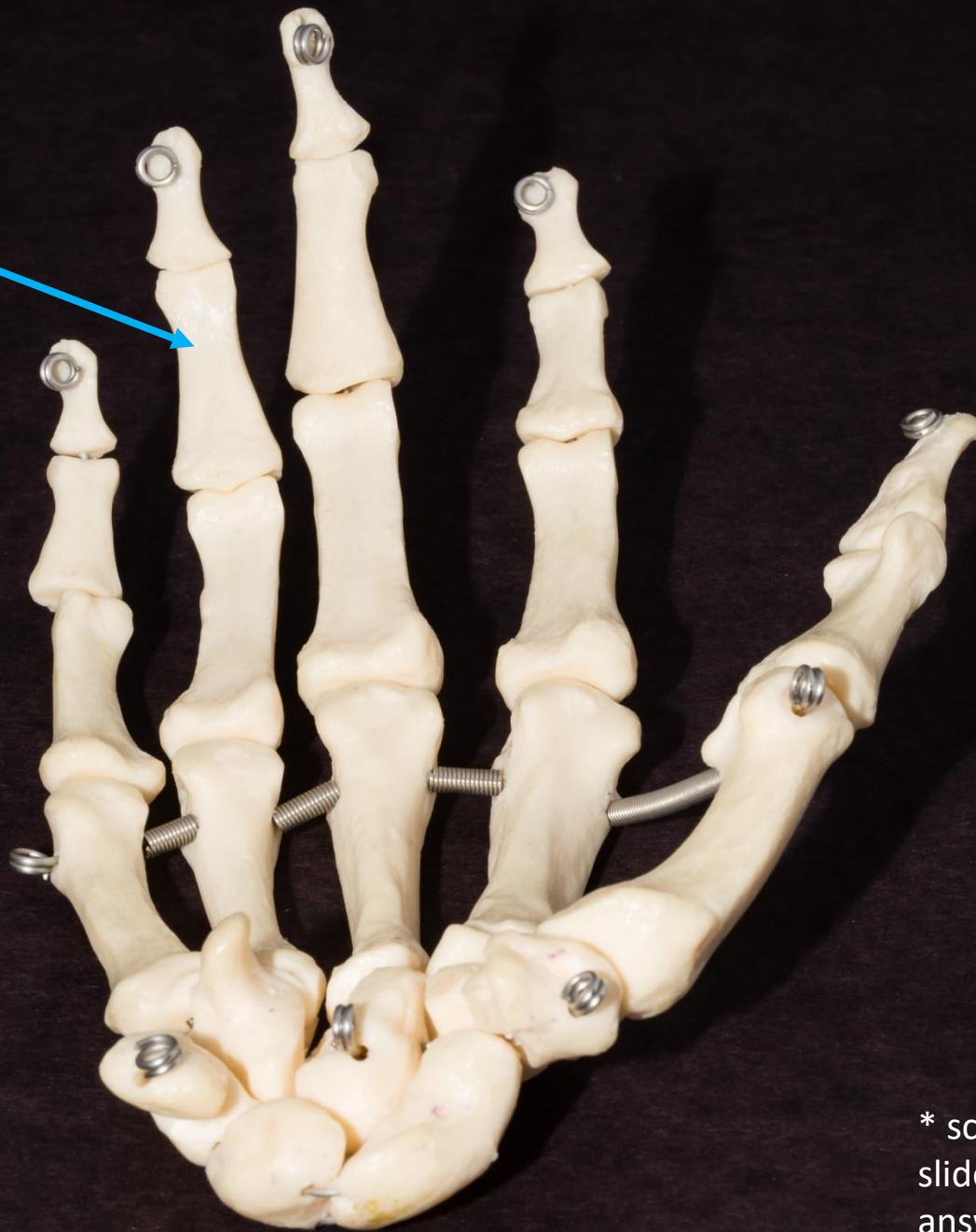




* scroll to the next
slide to check your
answer

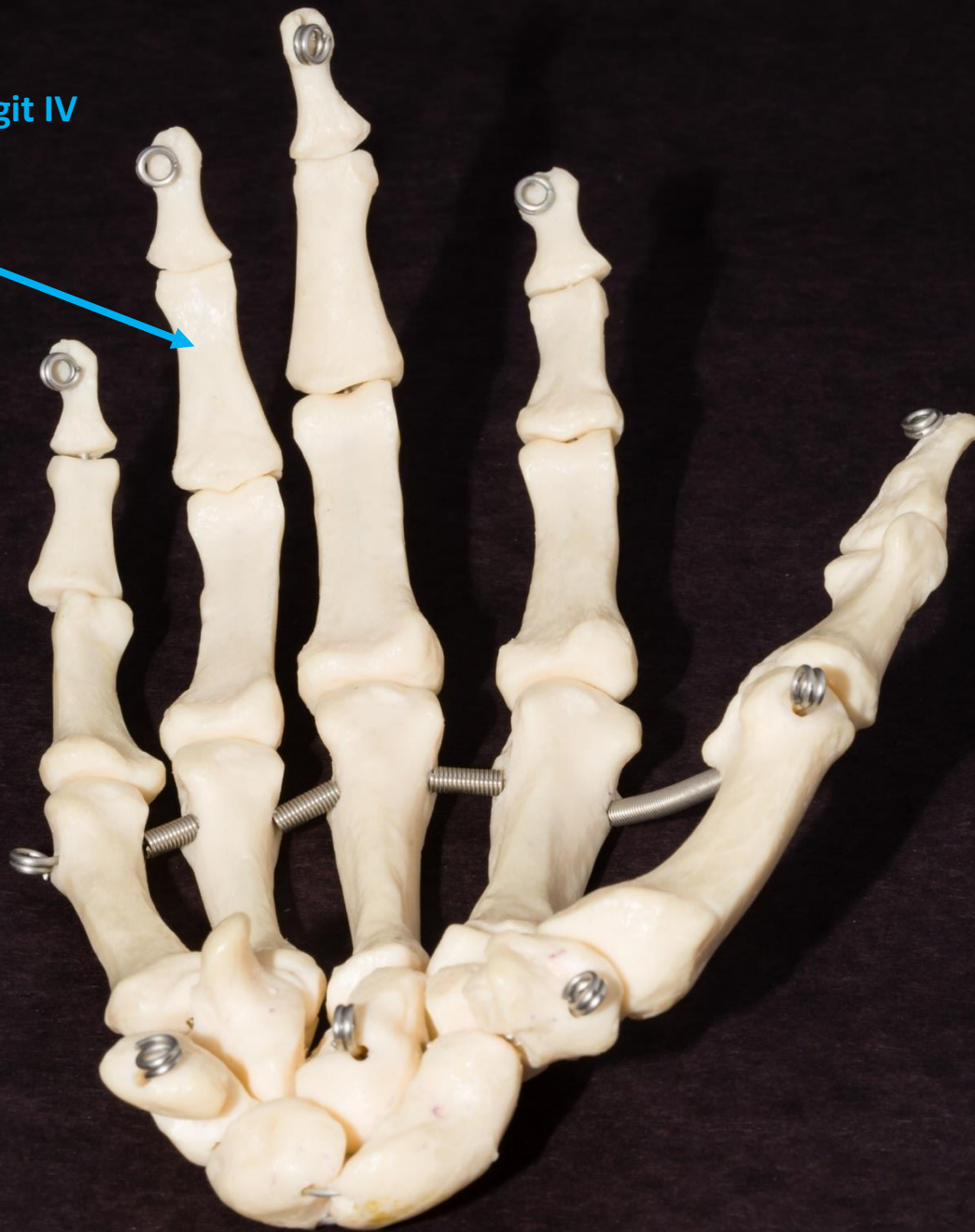
Calcaneus





* scroll to the next
slide to check your
answer

Middle phalanx of digit IV
(Rt. upper extremity)





* scroll to the next
slide to check your
answer



Olecranon
fossa of
humerus



* scroll to the next
slide to check your
answer



Posterior
superior
iliac spine