

Fetal Pig Practice Exam

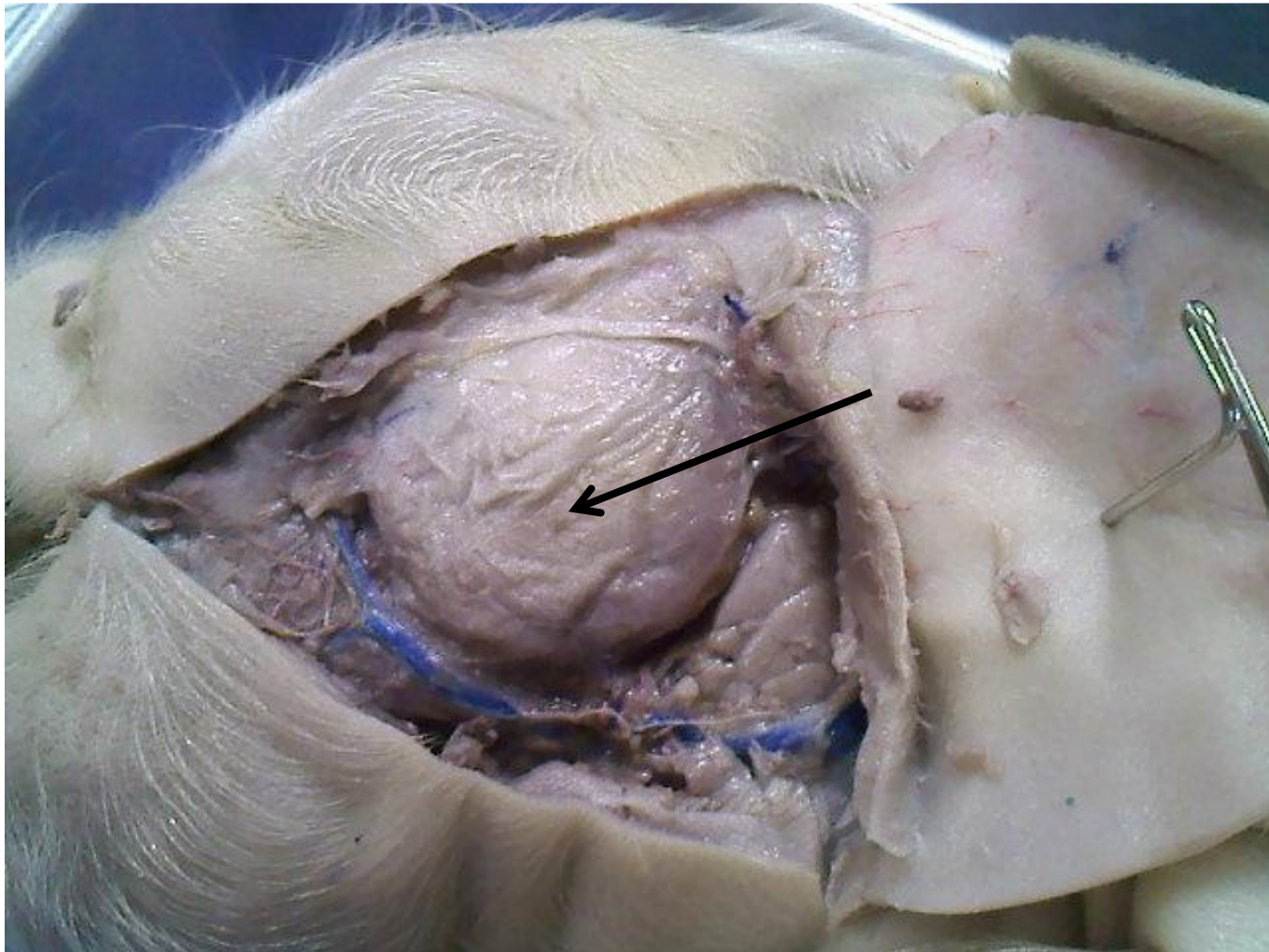
#2

Name the following structures indicated by the arrows.

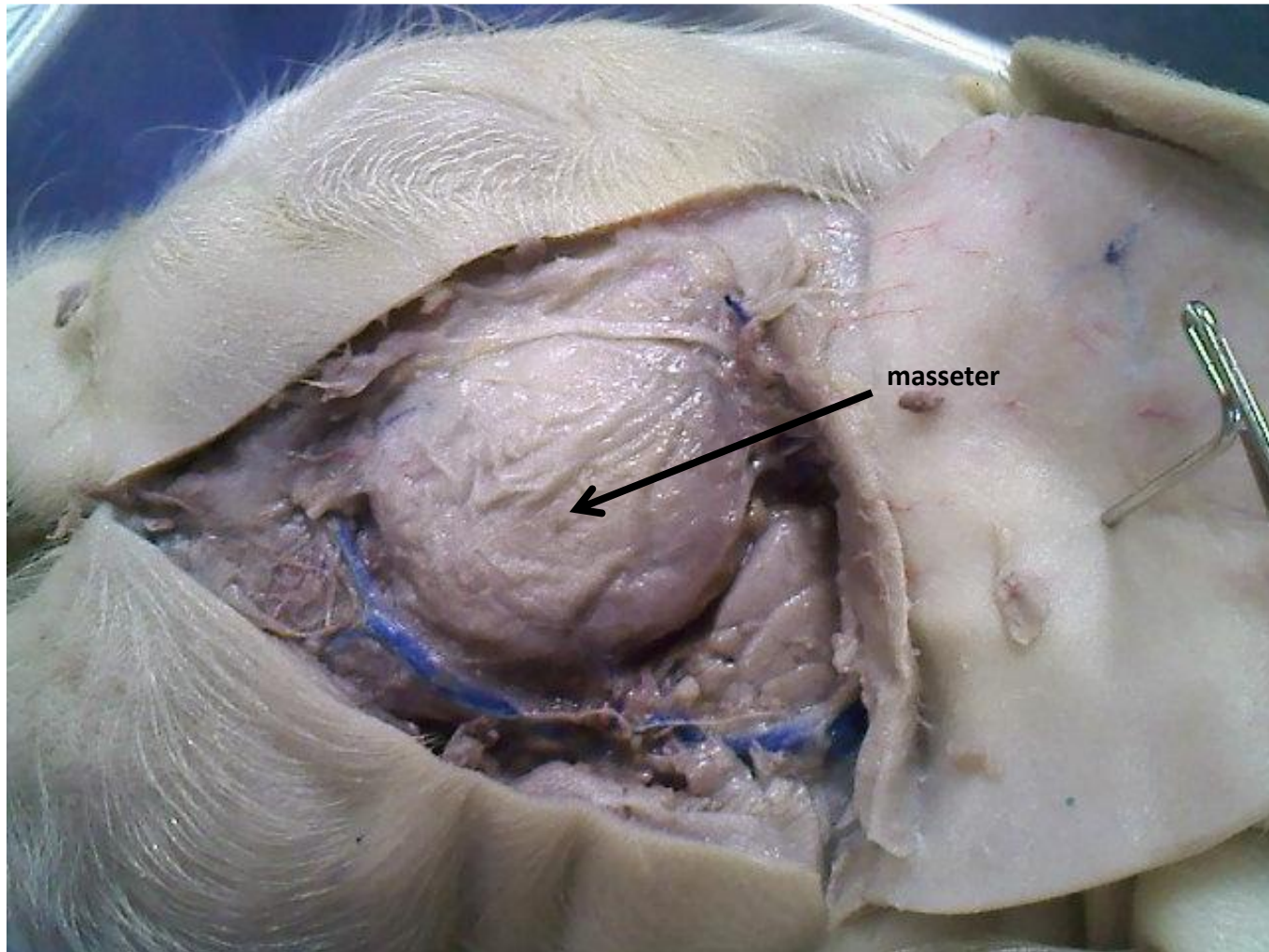
Scroll to the next slide to see the answer.

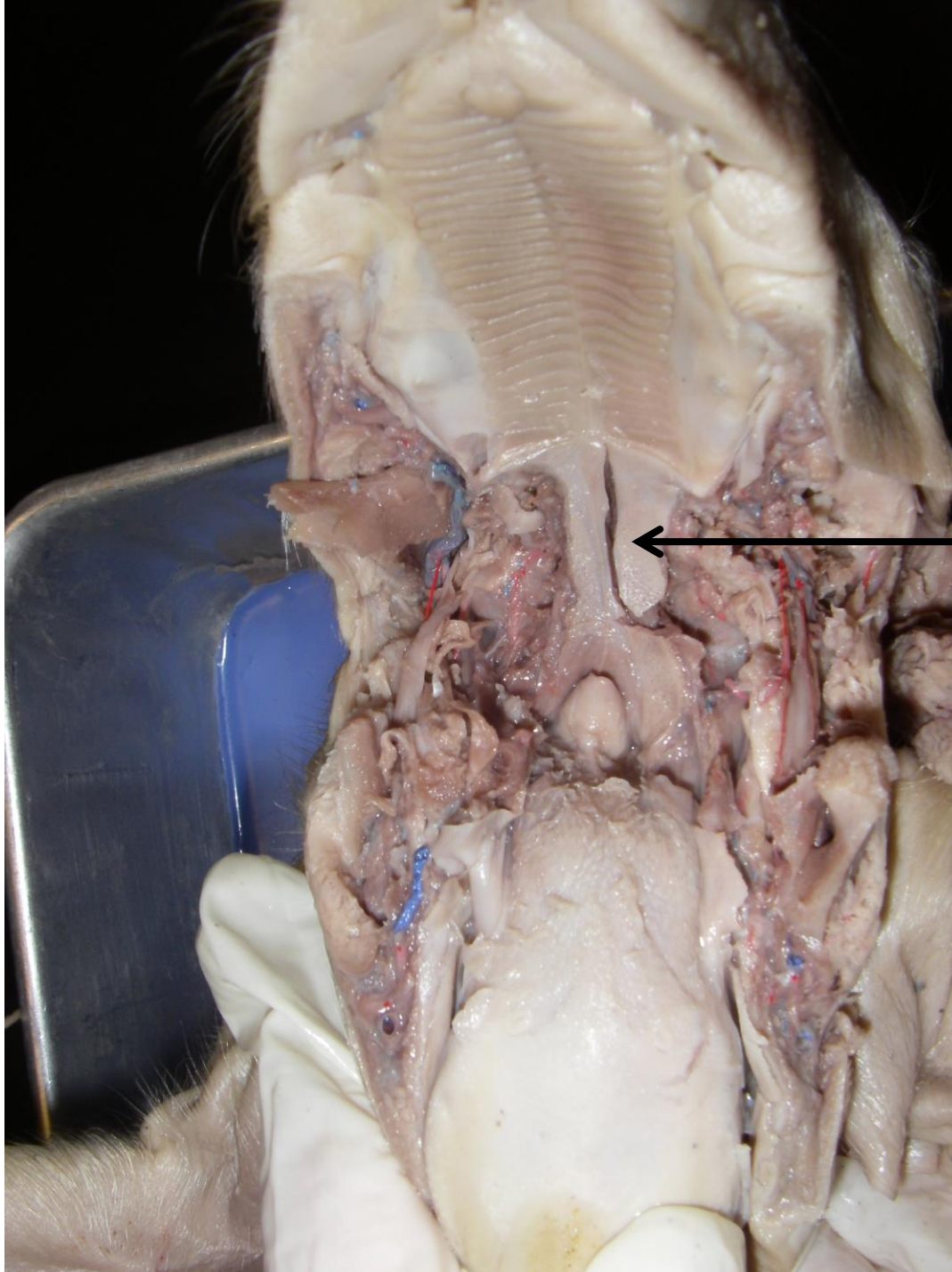
*For best results on these practice exams, write your answers on paper before scrolling to see the correct answer. Try to answer within a minute (remember your lab exams will be timed) and make sure to check your spelling!

*note: not every structure you are required to know will be on this practice exercise so make sure you review the checklist of structures (p. 178-179 in your lab manual) when preparing for your lab exam

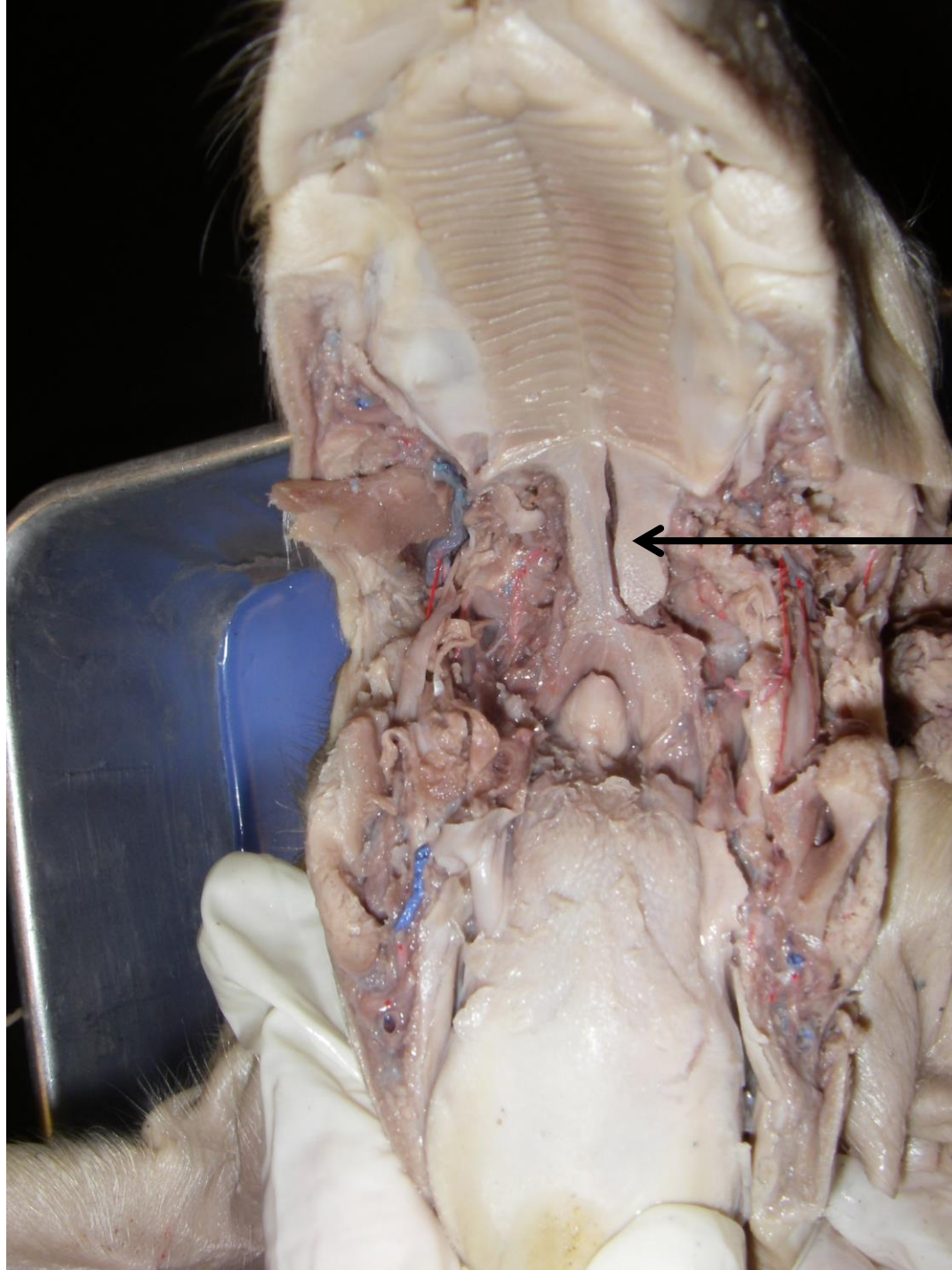


*scroll to the next slide to check your answer

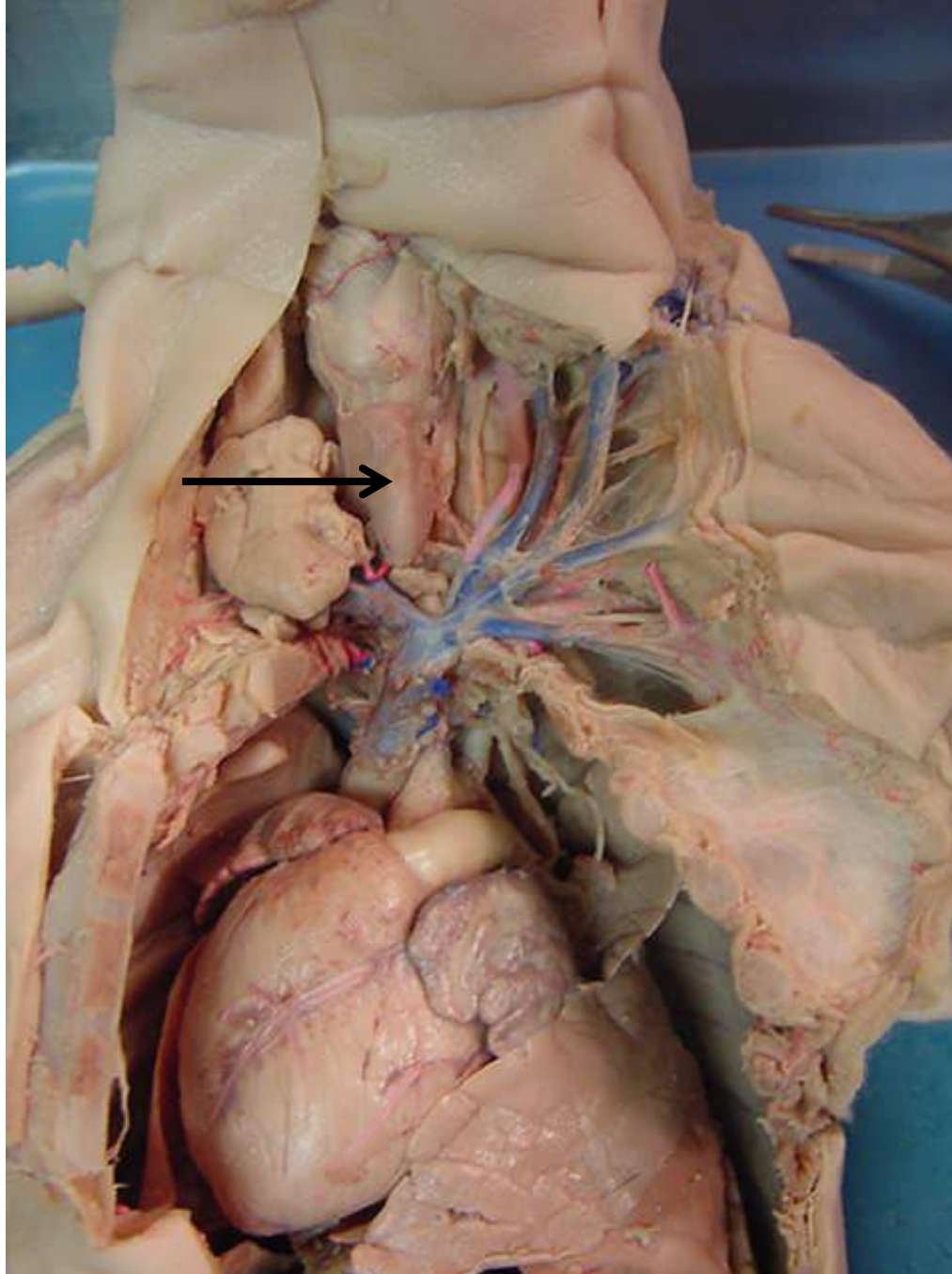




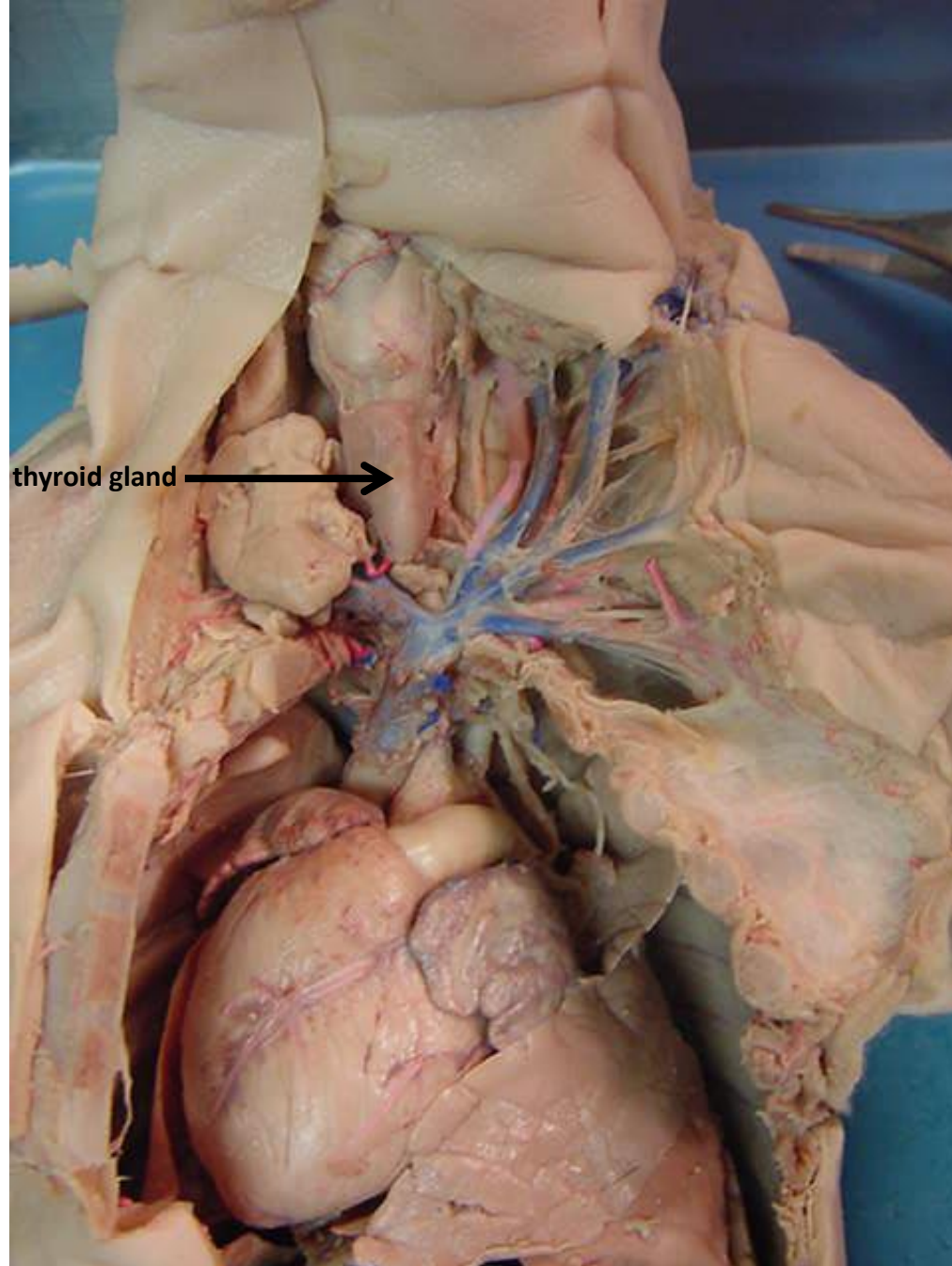
*scroll to the next slide
to check your answer

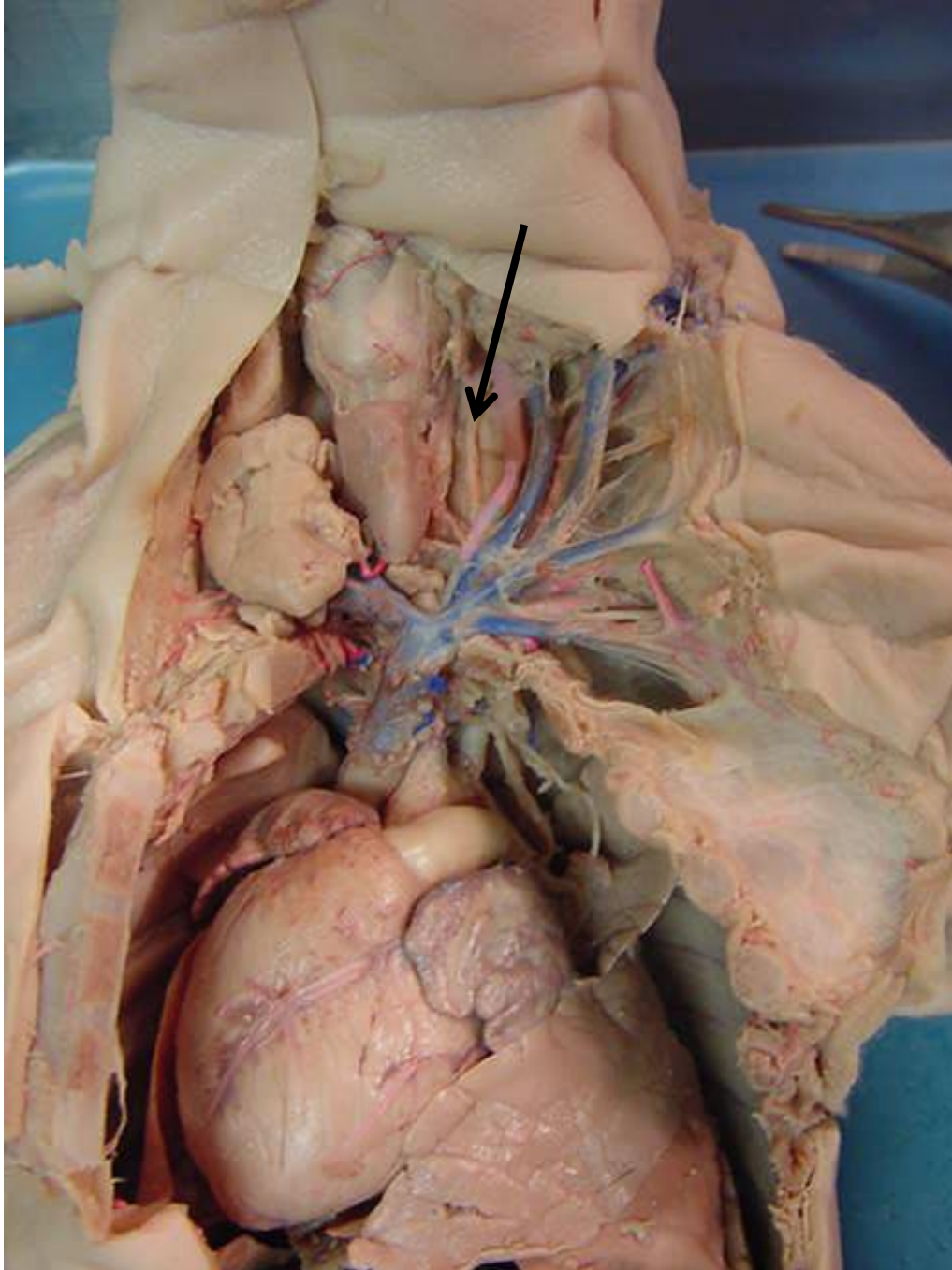


← soft palate

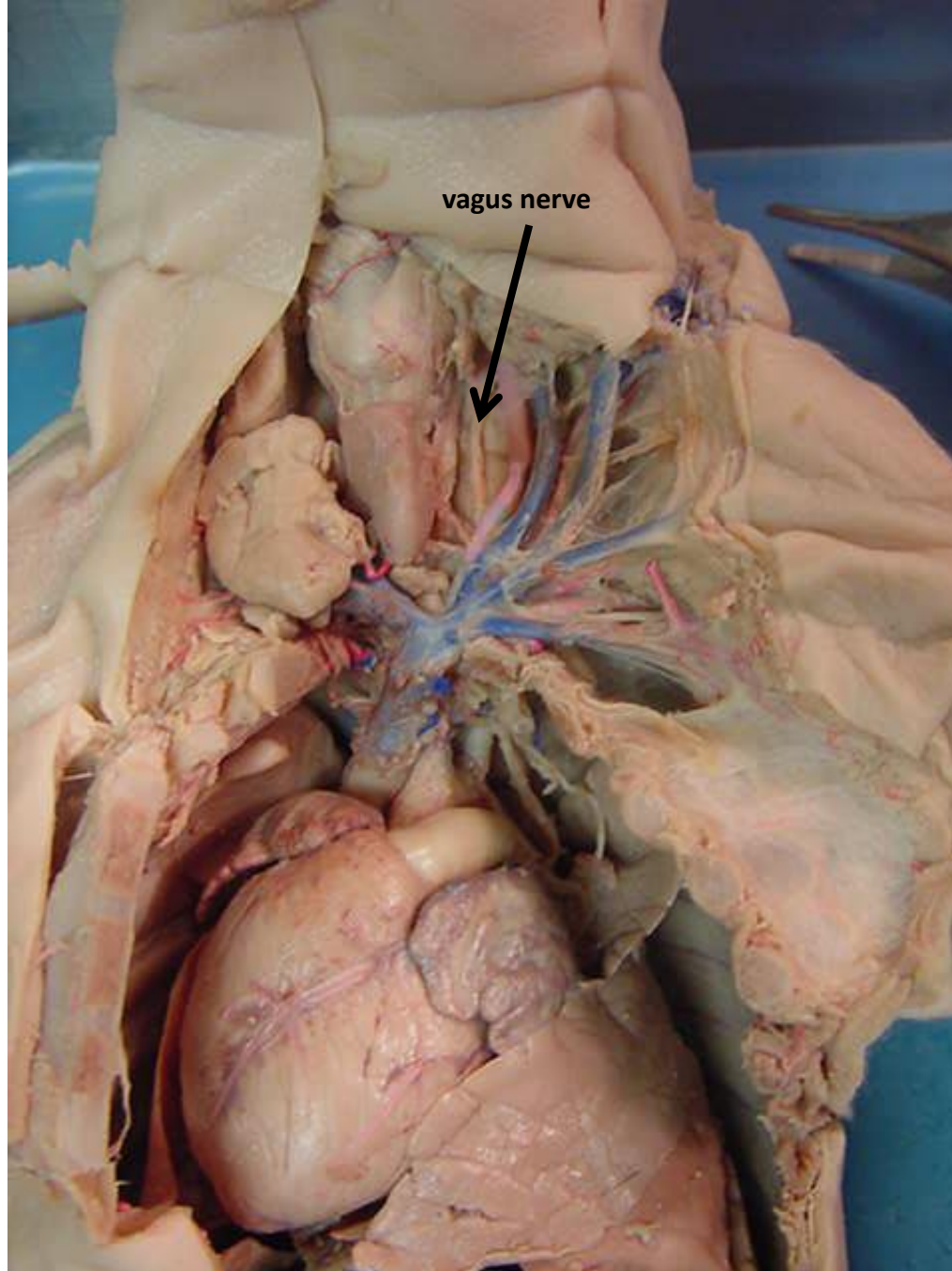


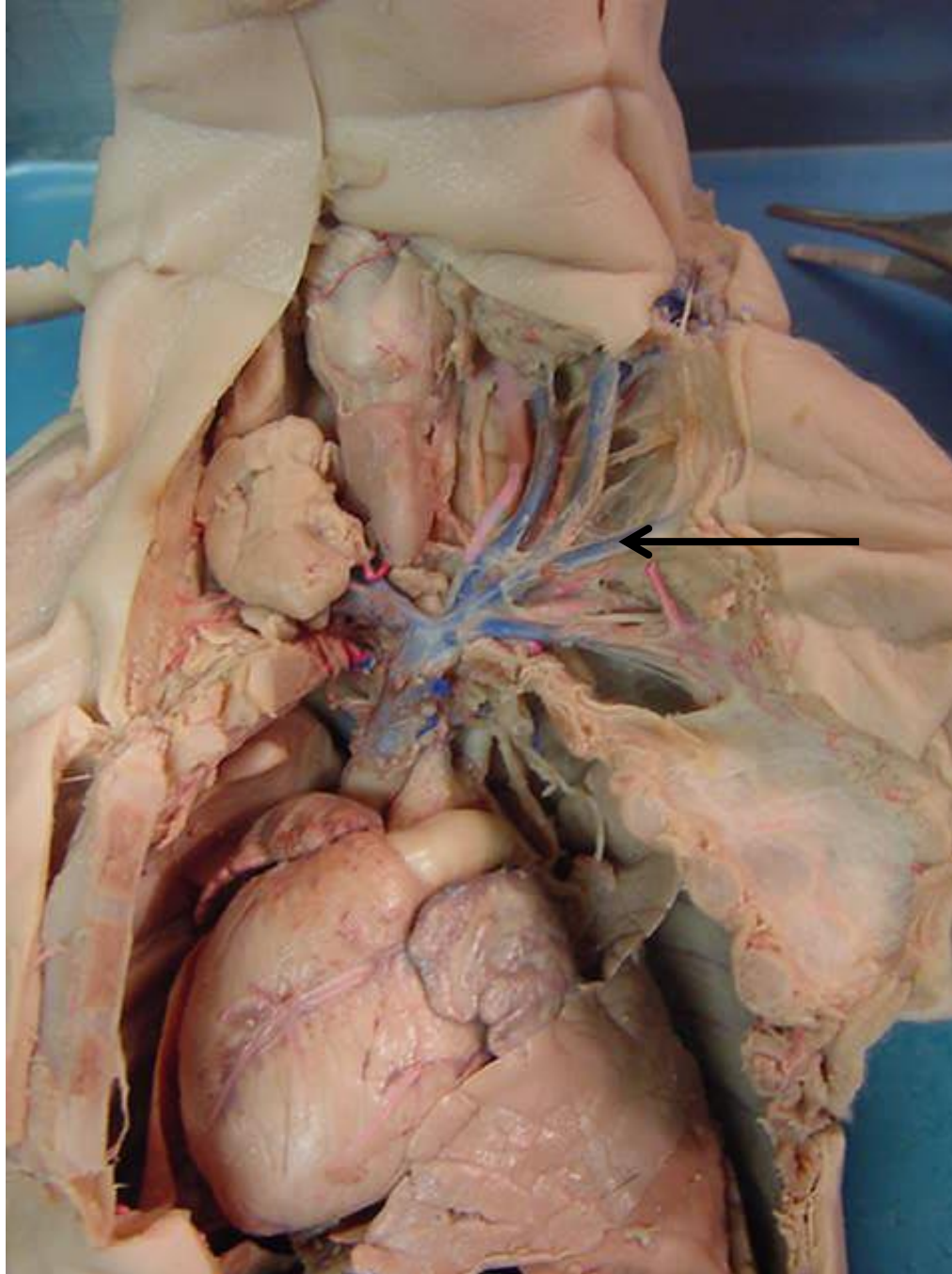
*scroll to the next
slide to check your
answer



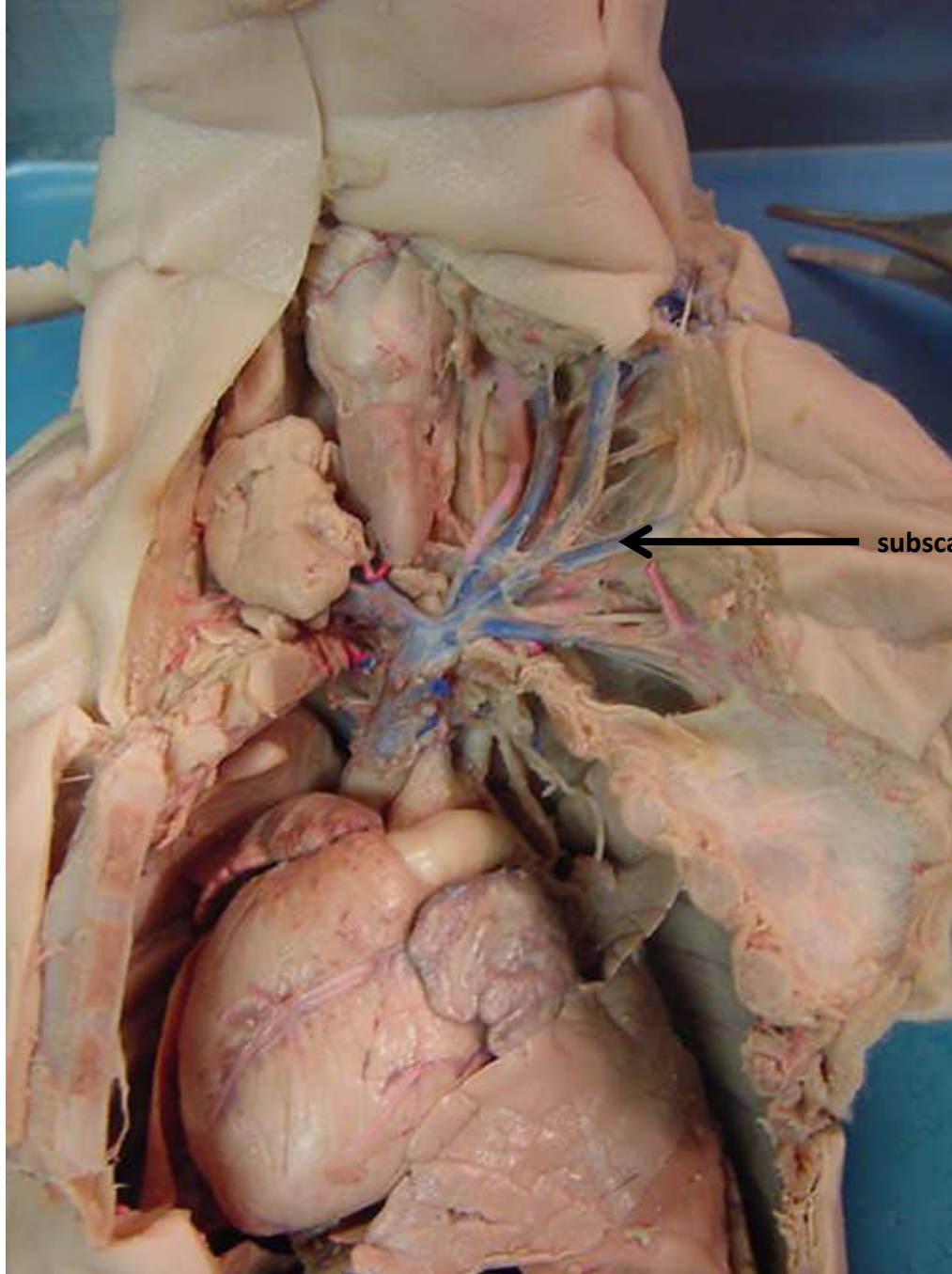


*scroll to the next
slide to check your
answer

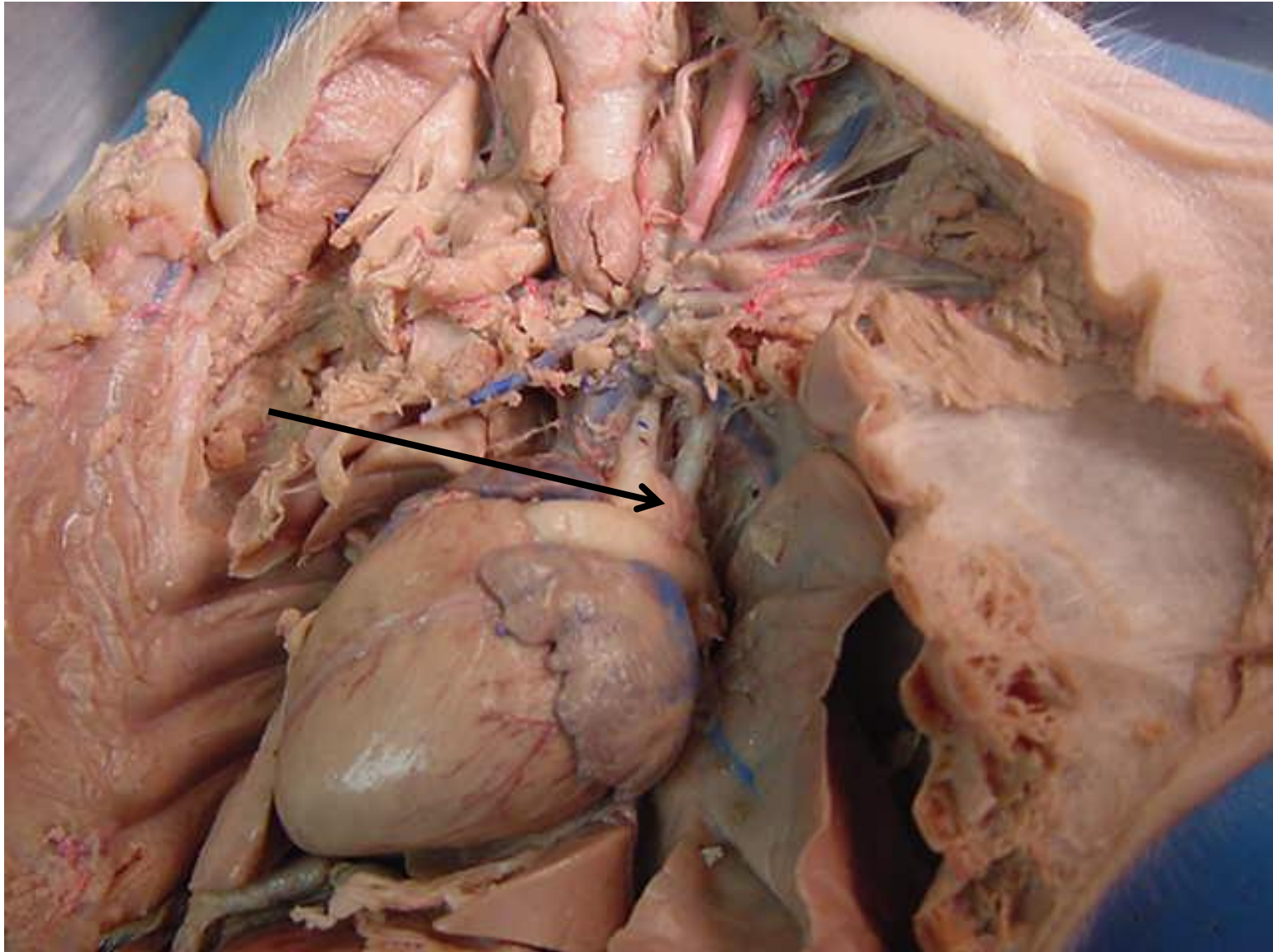




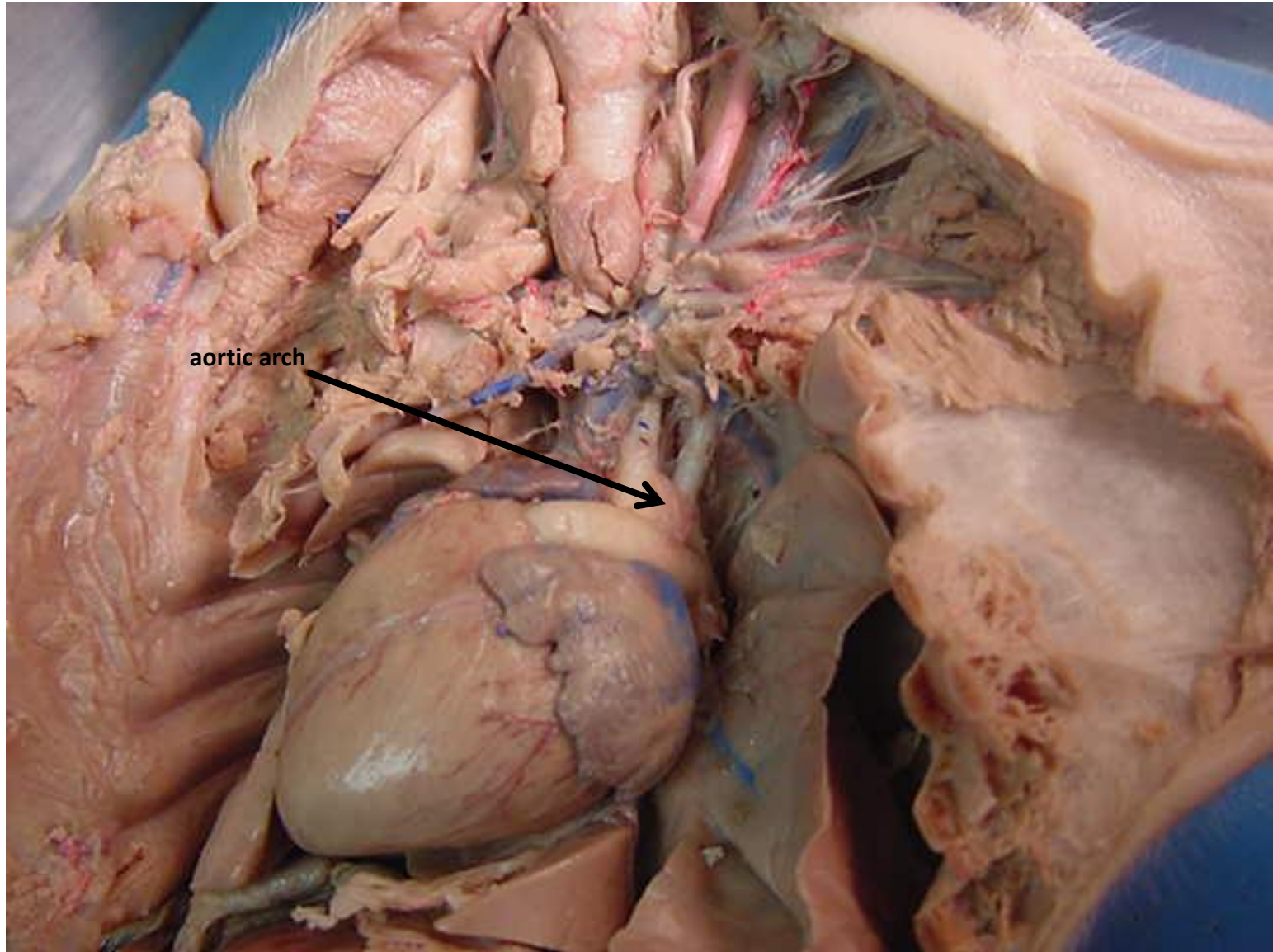
*scroll to the
next slide to
check your
answer

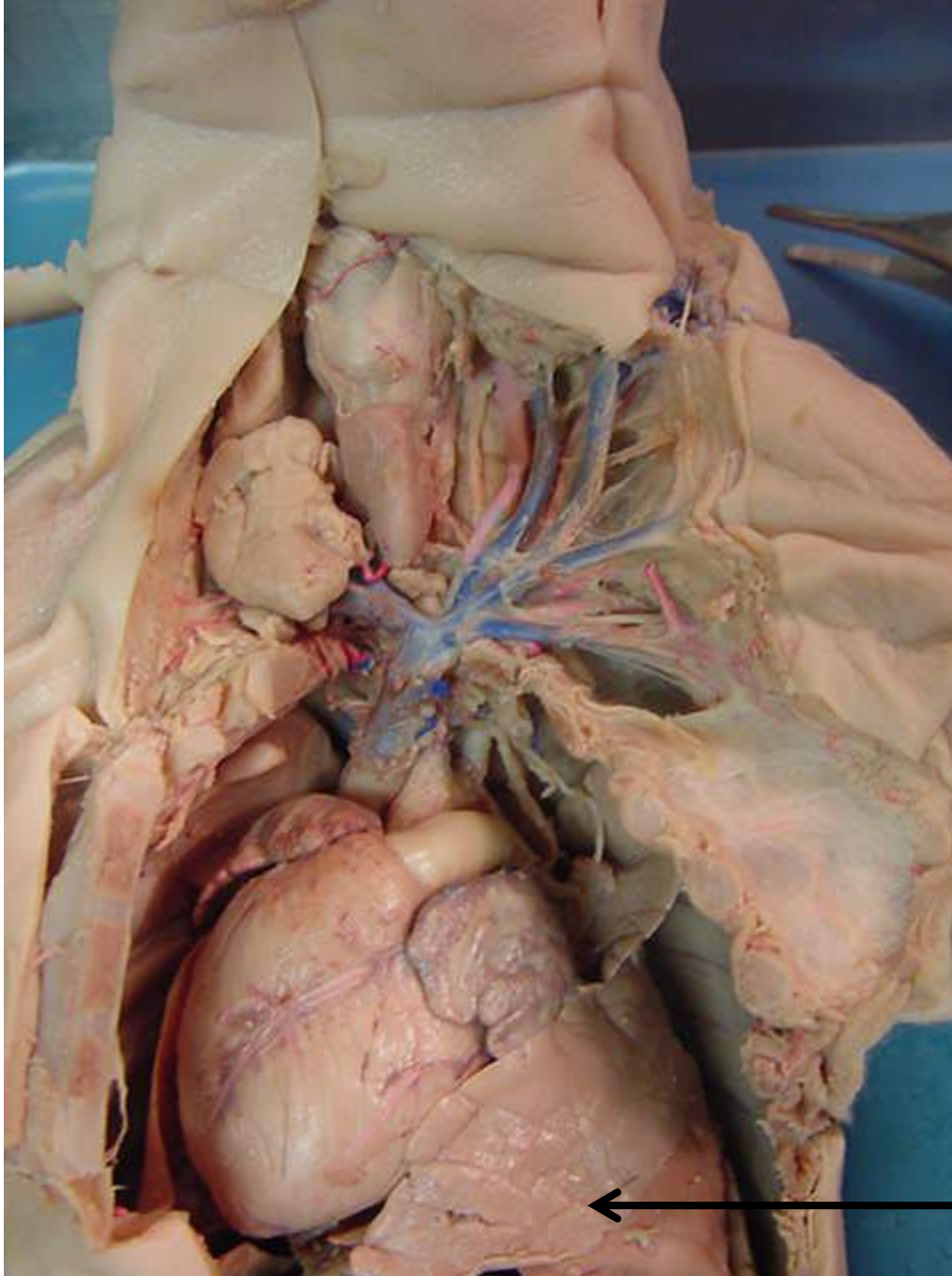


← subscapular vein

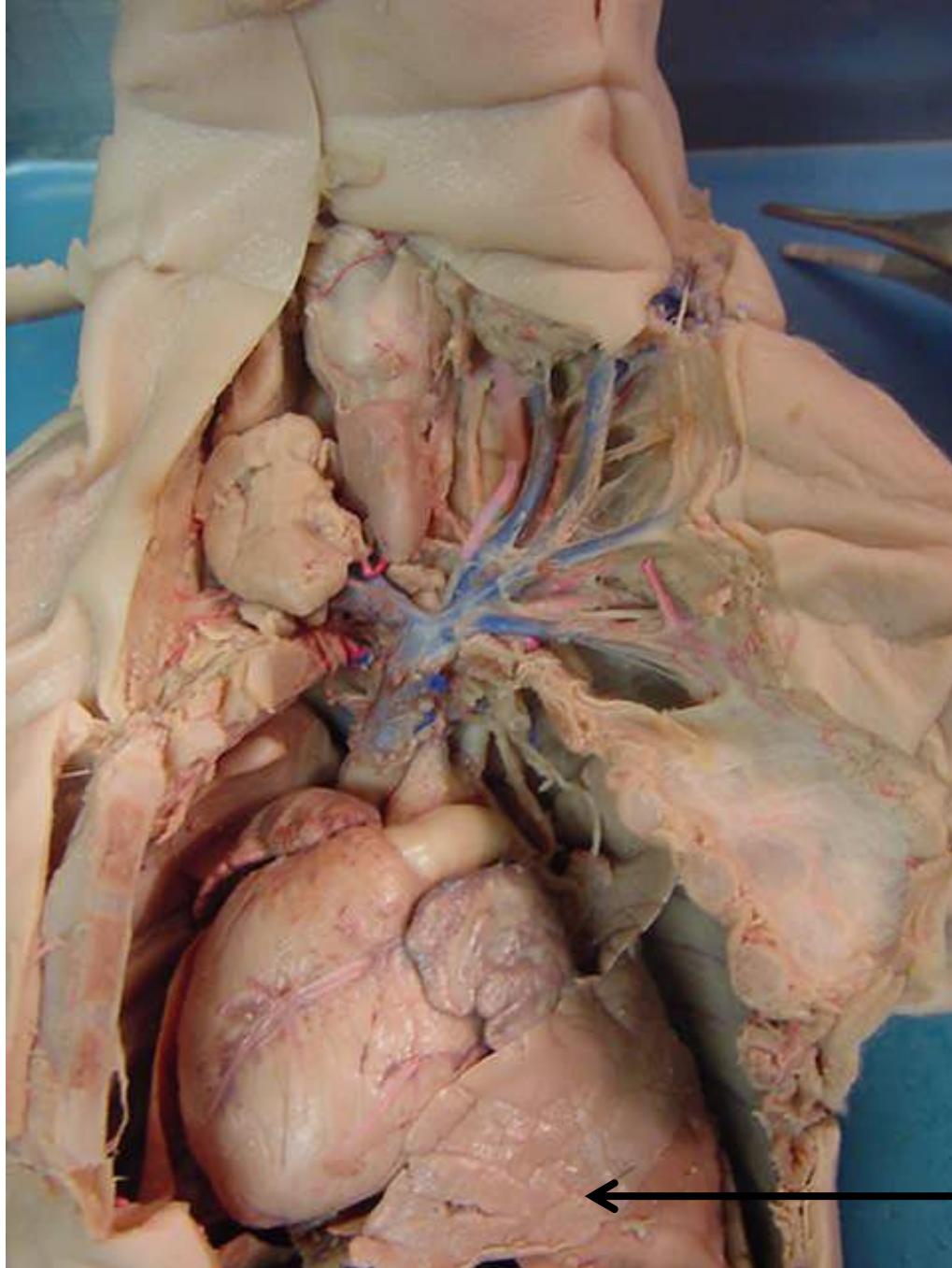


*scroll to the next slide to check your answer

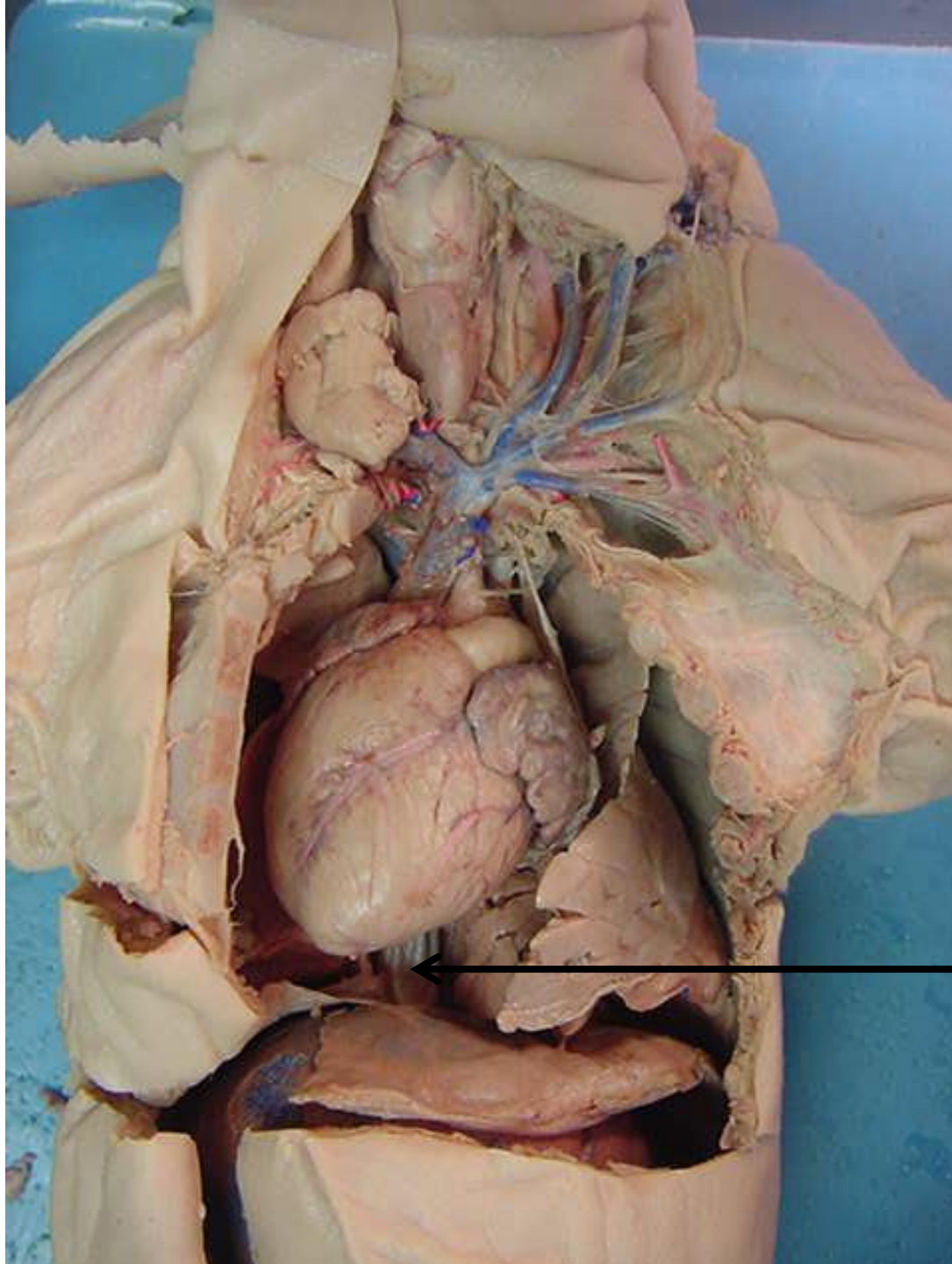




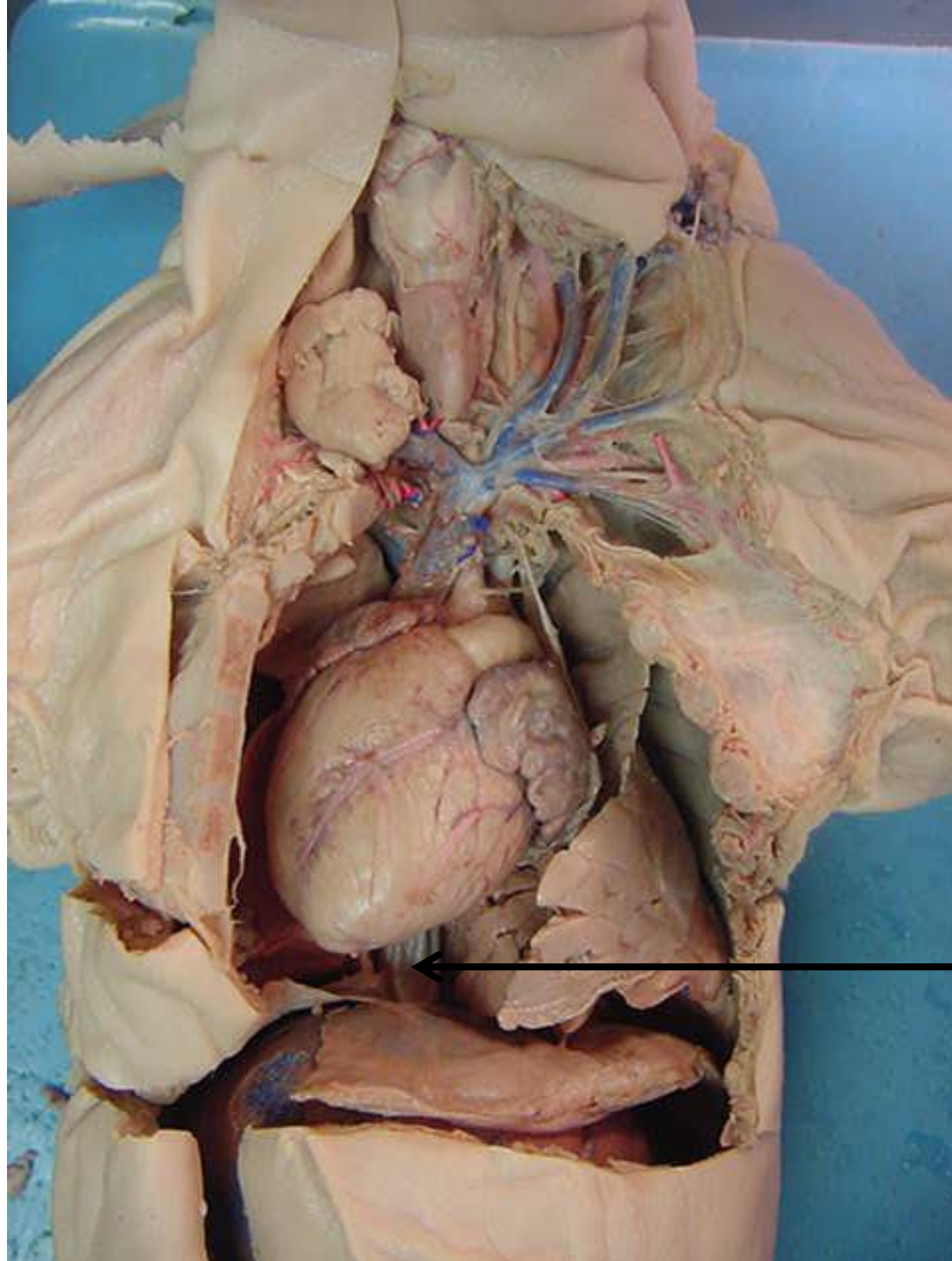
*scroll to the next
slide to check your
answer



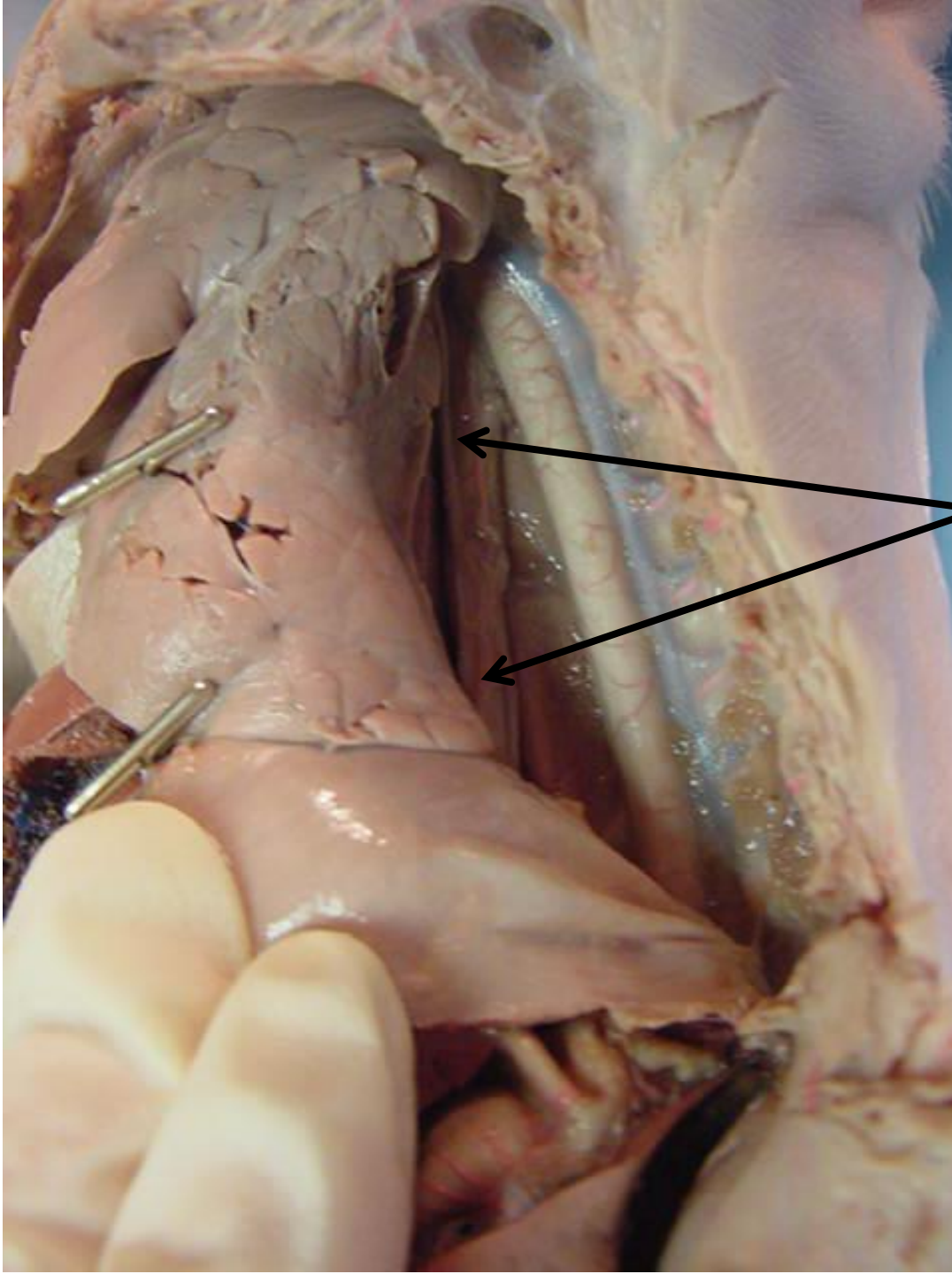
left lung



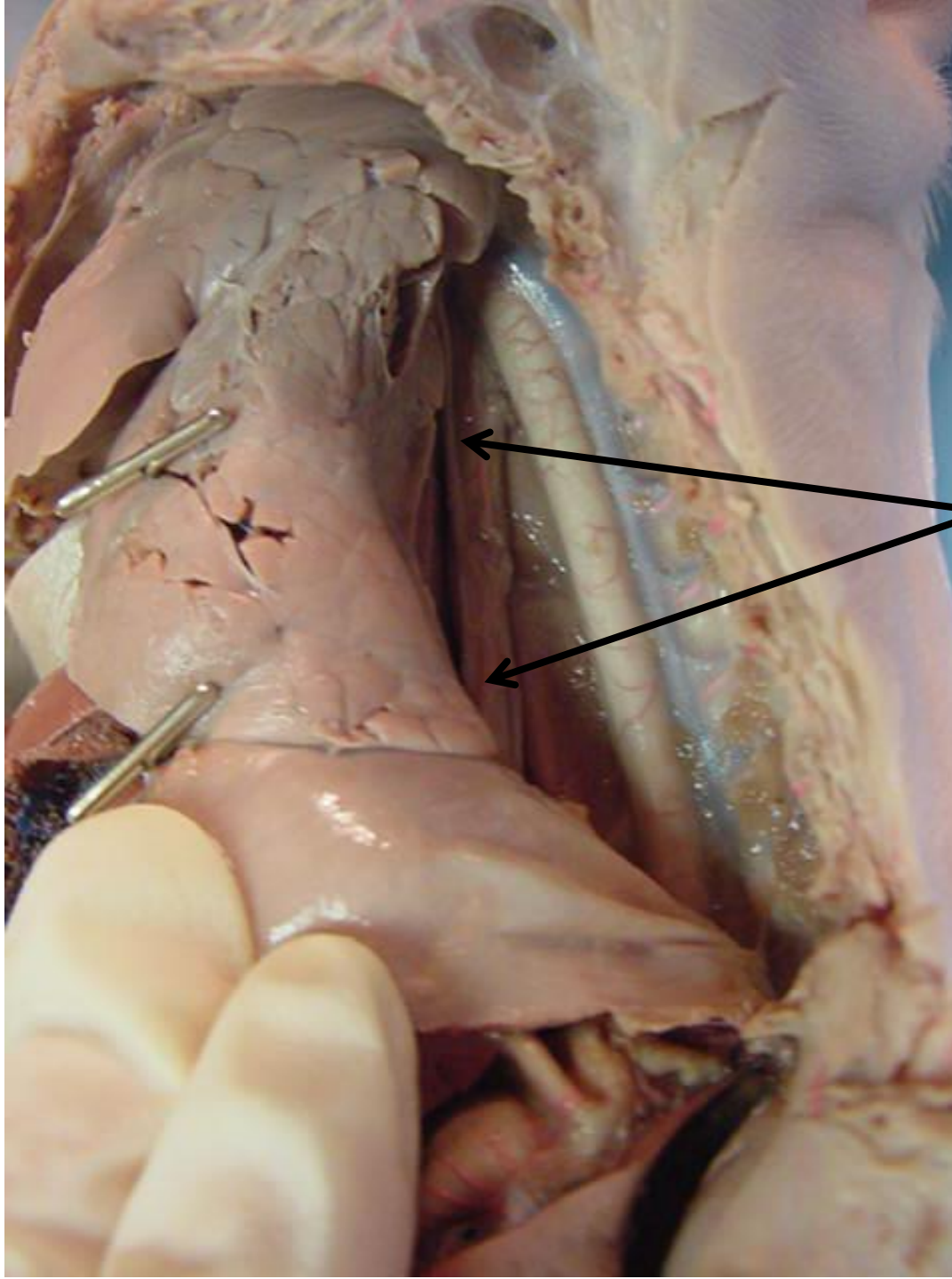
*scroll to the next slide to check your answer



Posterior
vena cava



*scroll to the next slide
to check your answer



esophagus



*scroll to the next
slide to check your
answer

umbilical vein





*scroll to the
next slide to
check your
answer



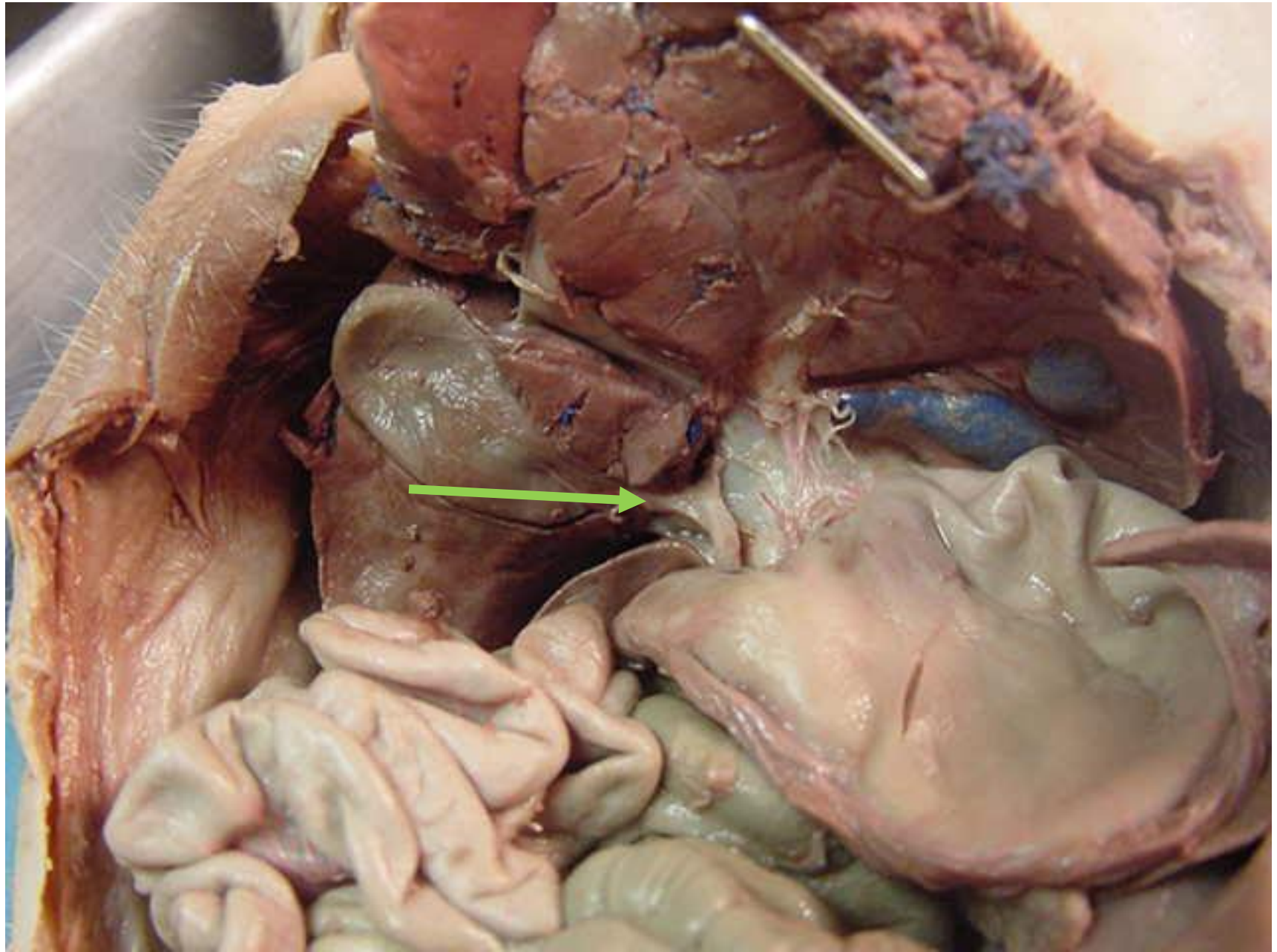
spleen



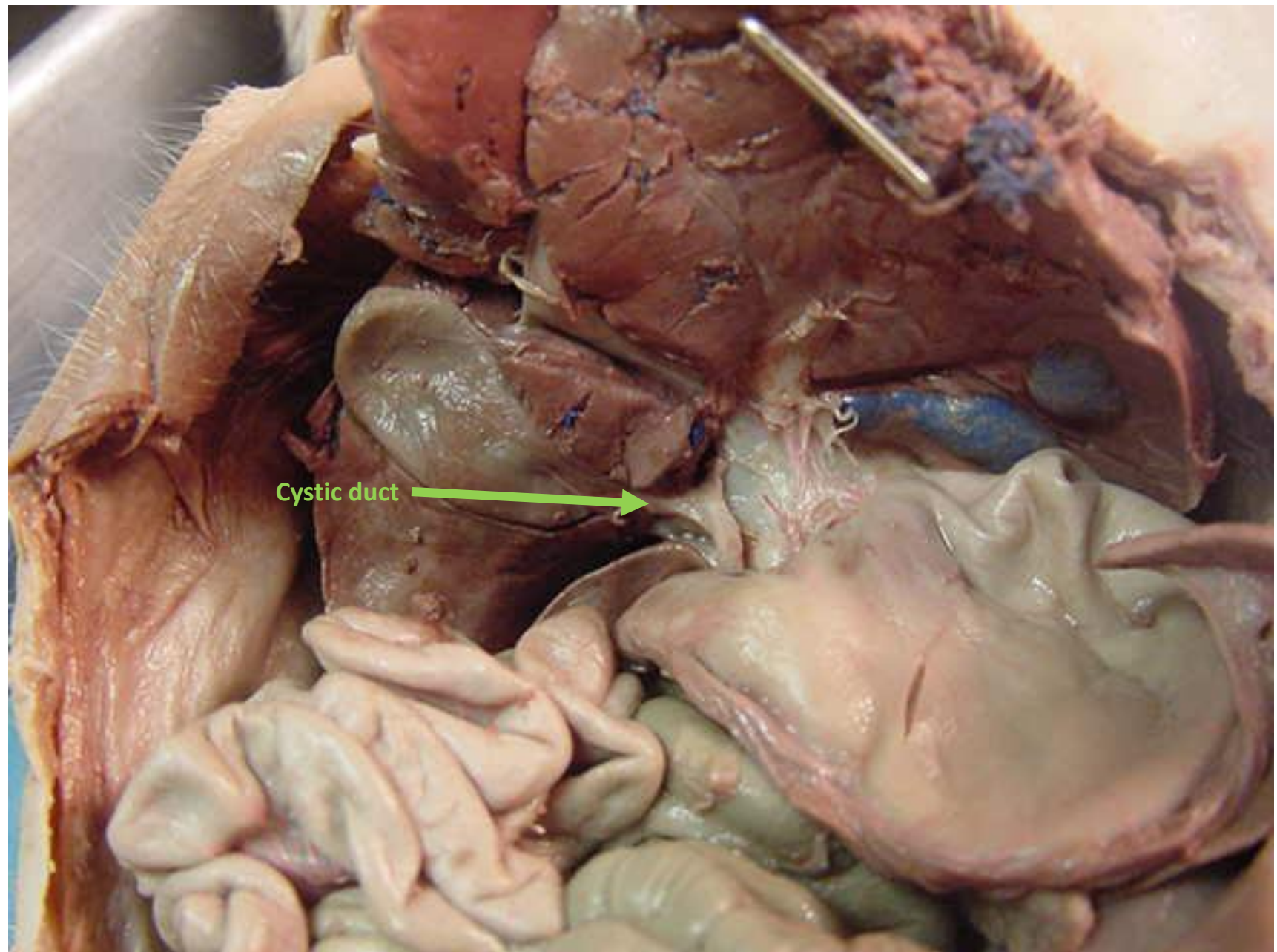
*scroll to the next slide to check your answer

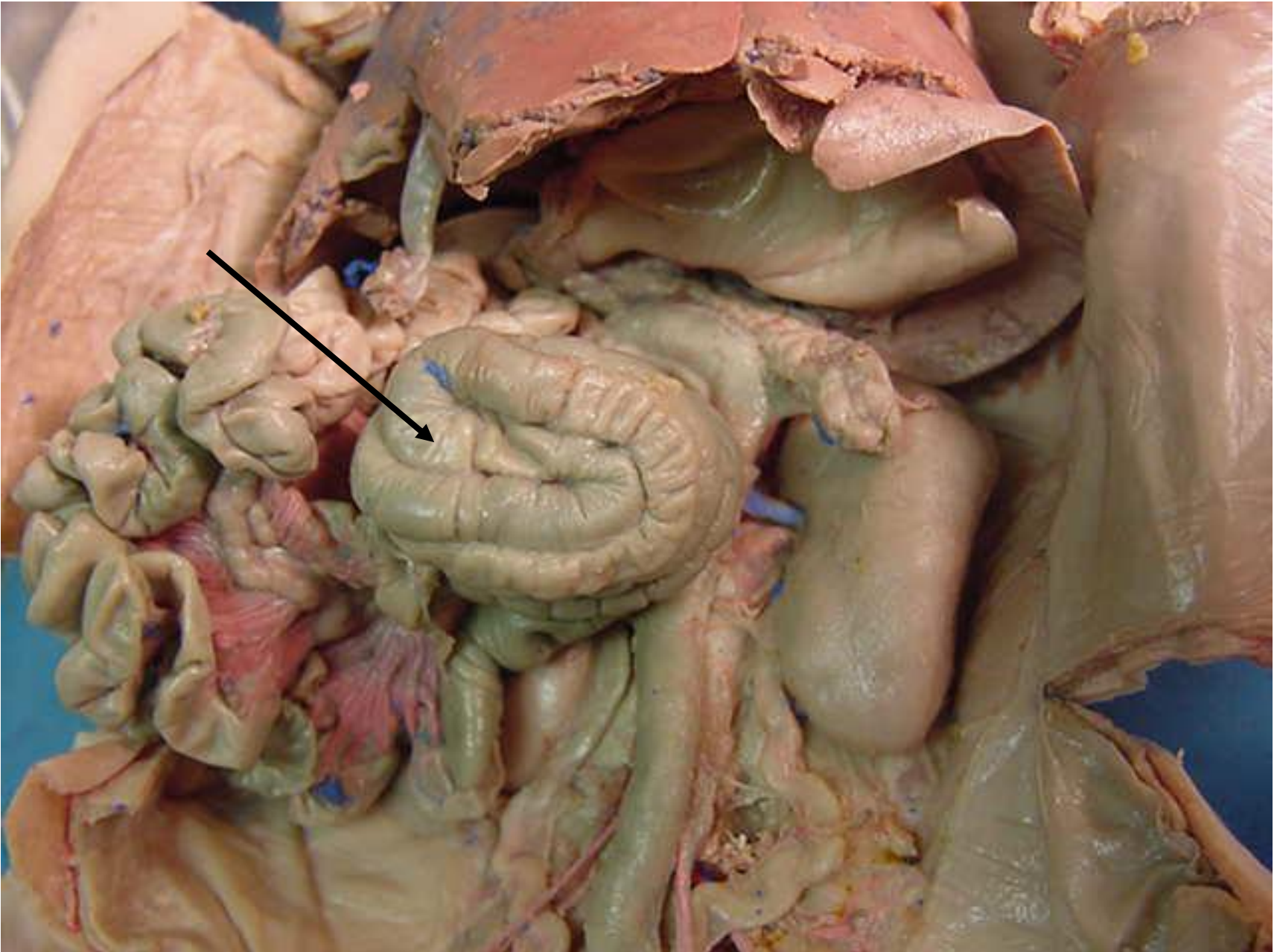
Cardiac
sphincter



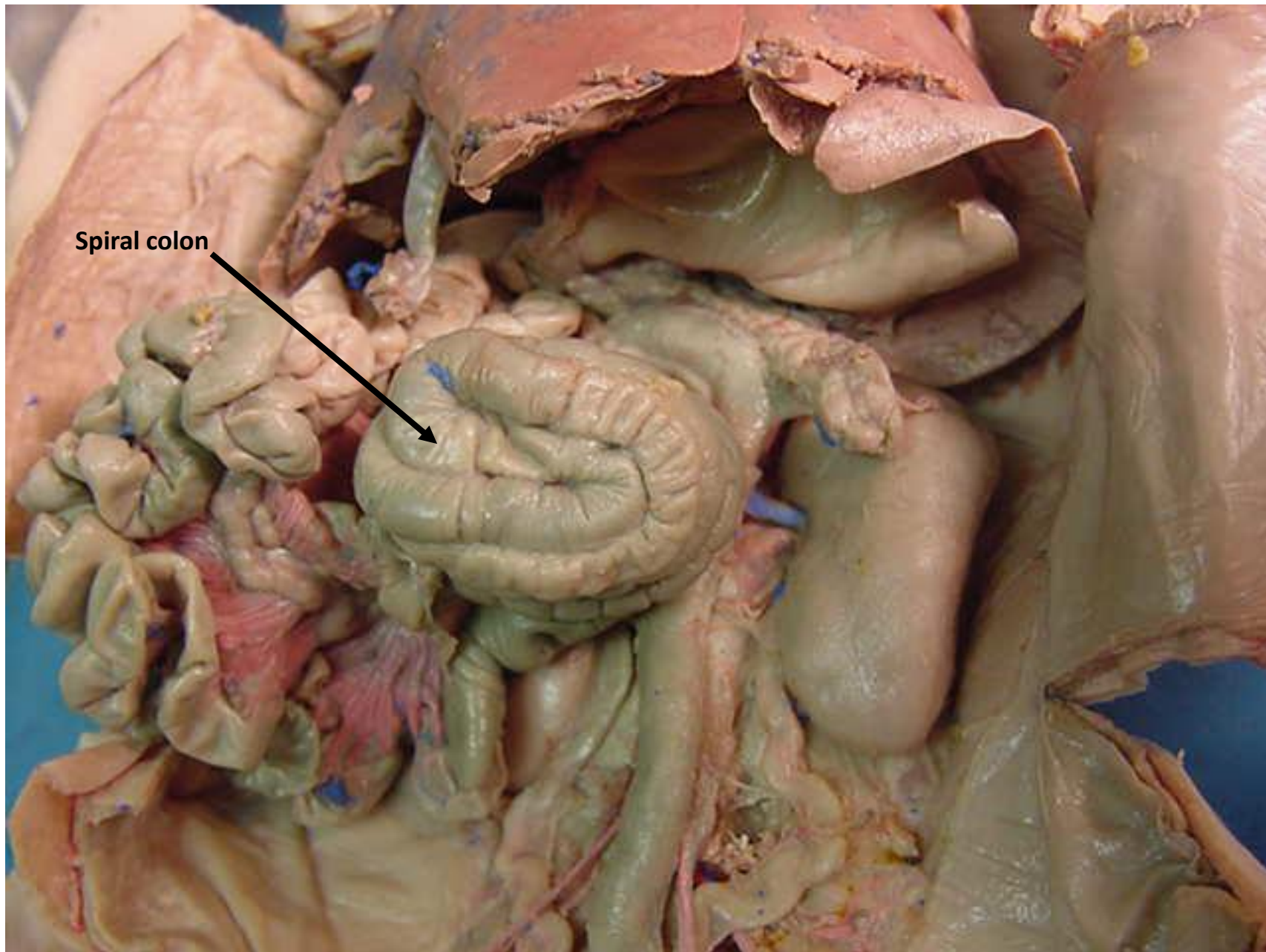


*scroll to the next slide to check your answer

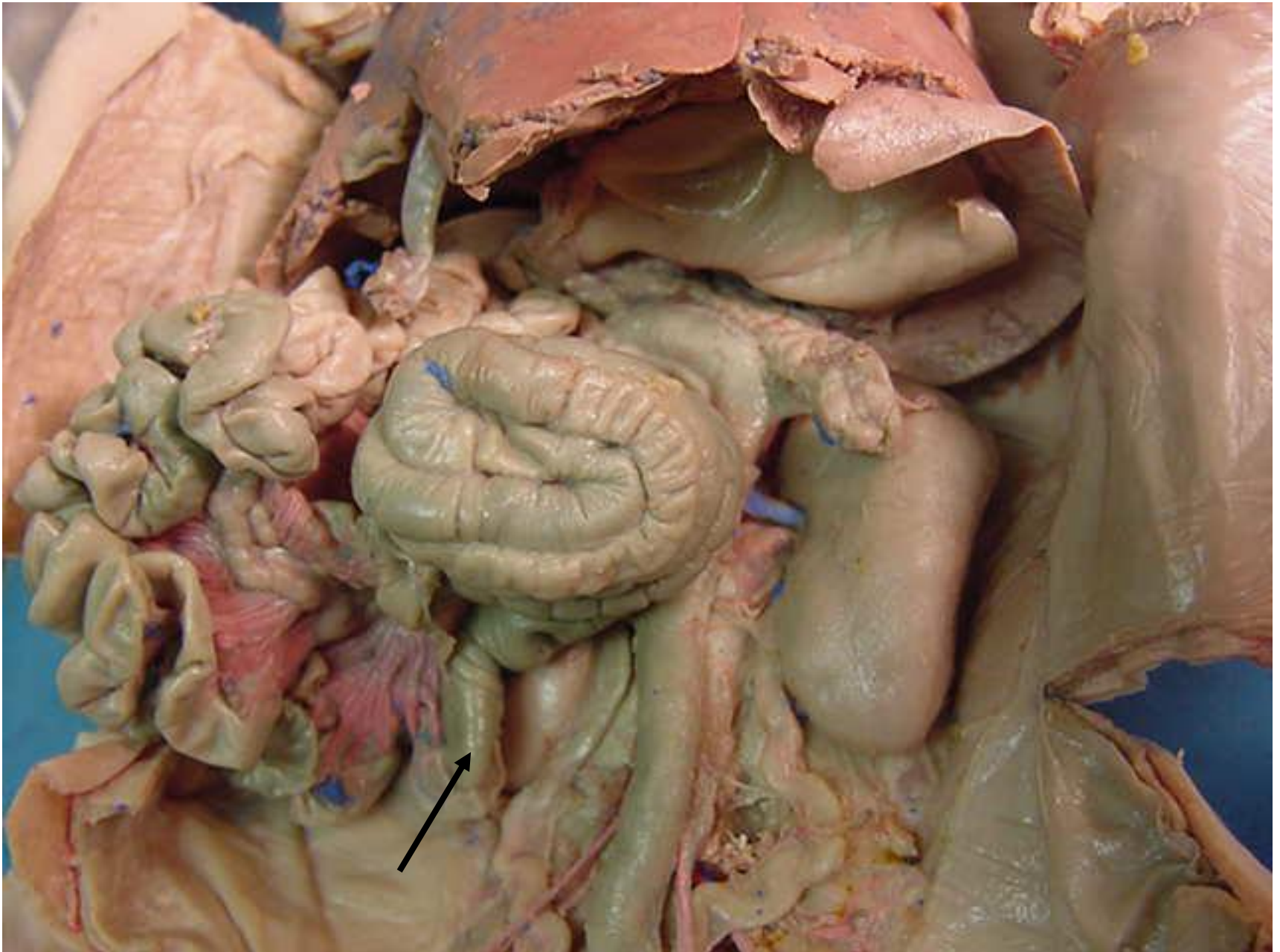




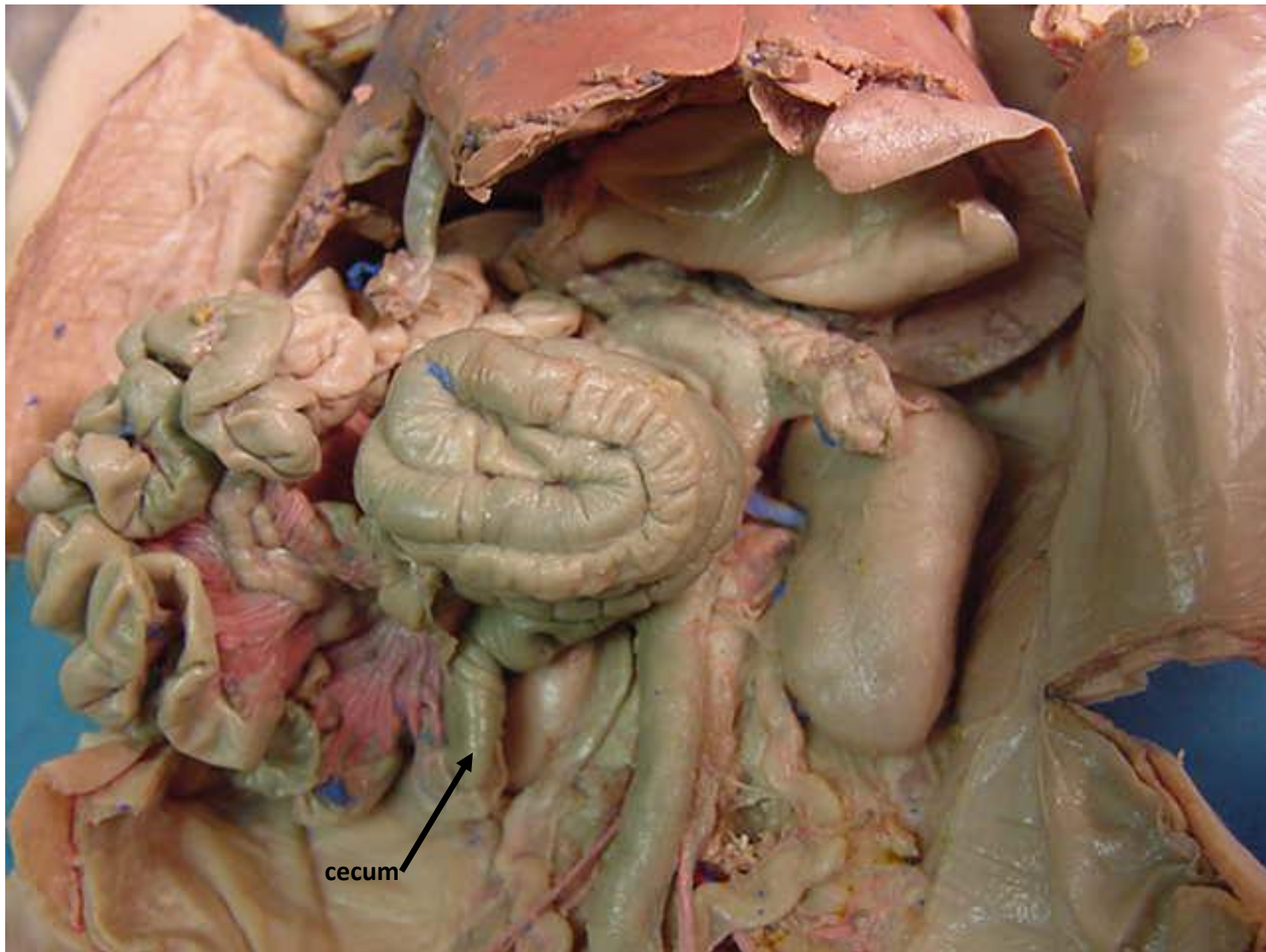
*scroll to the next slide to check your answer



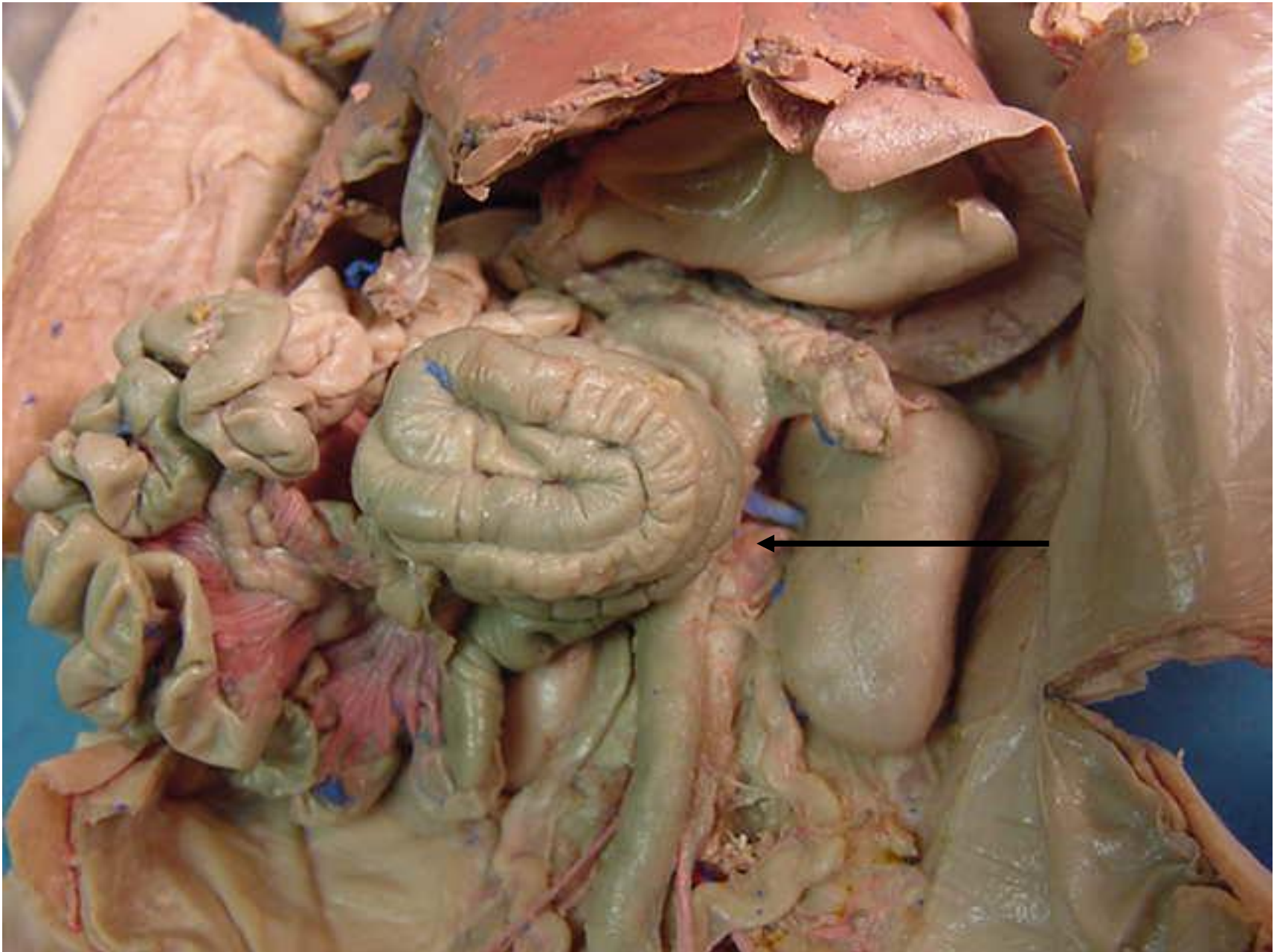
Spiral colon



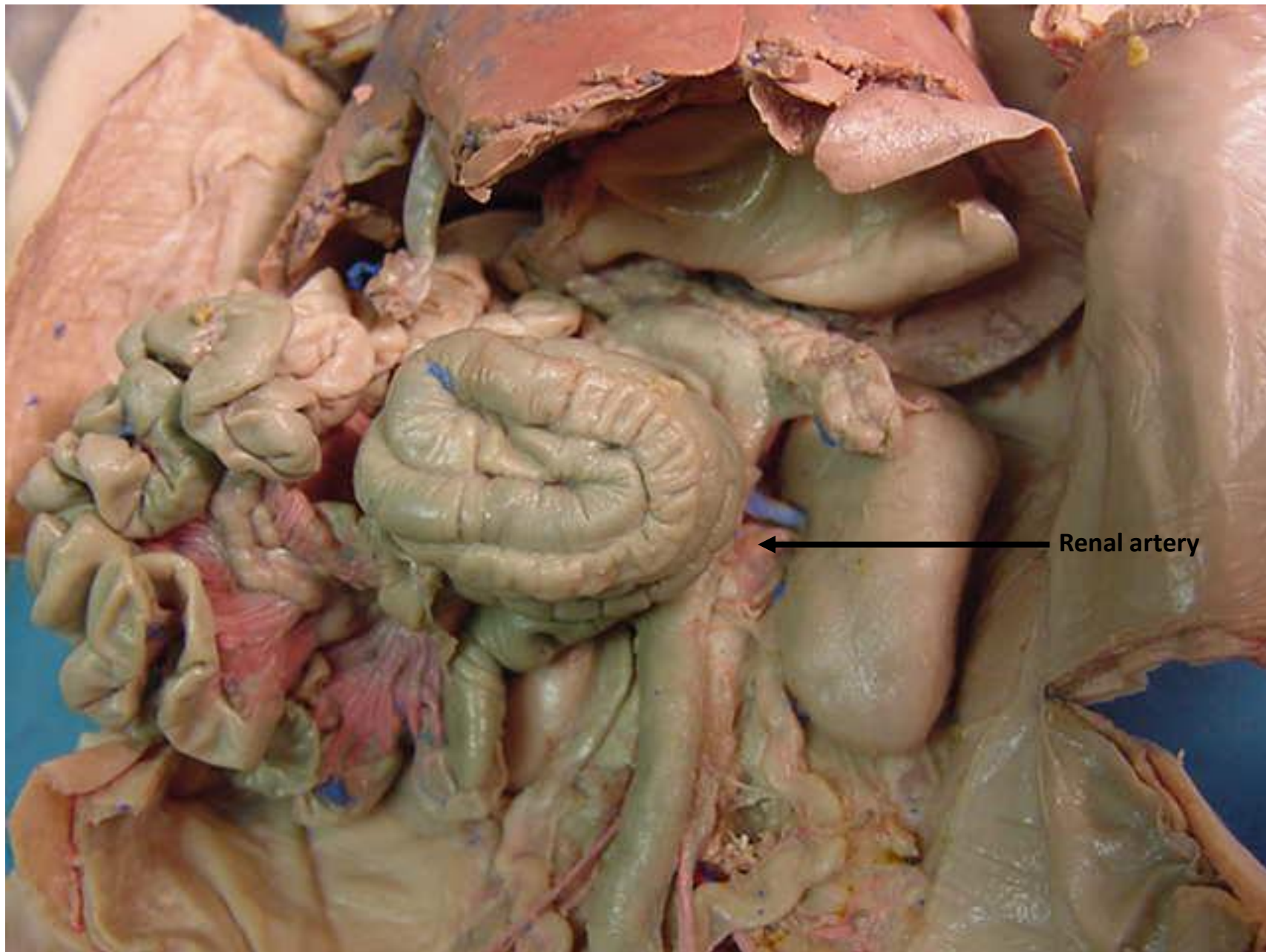
*scroll to the next slide to check your answer



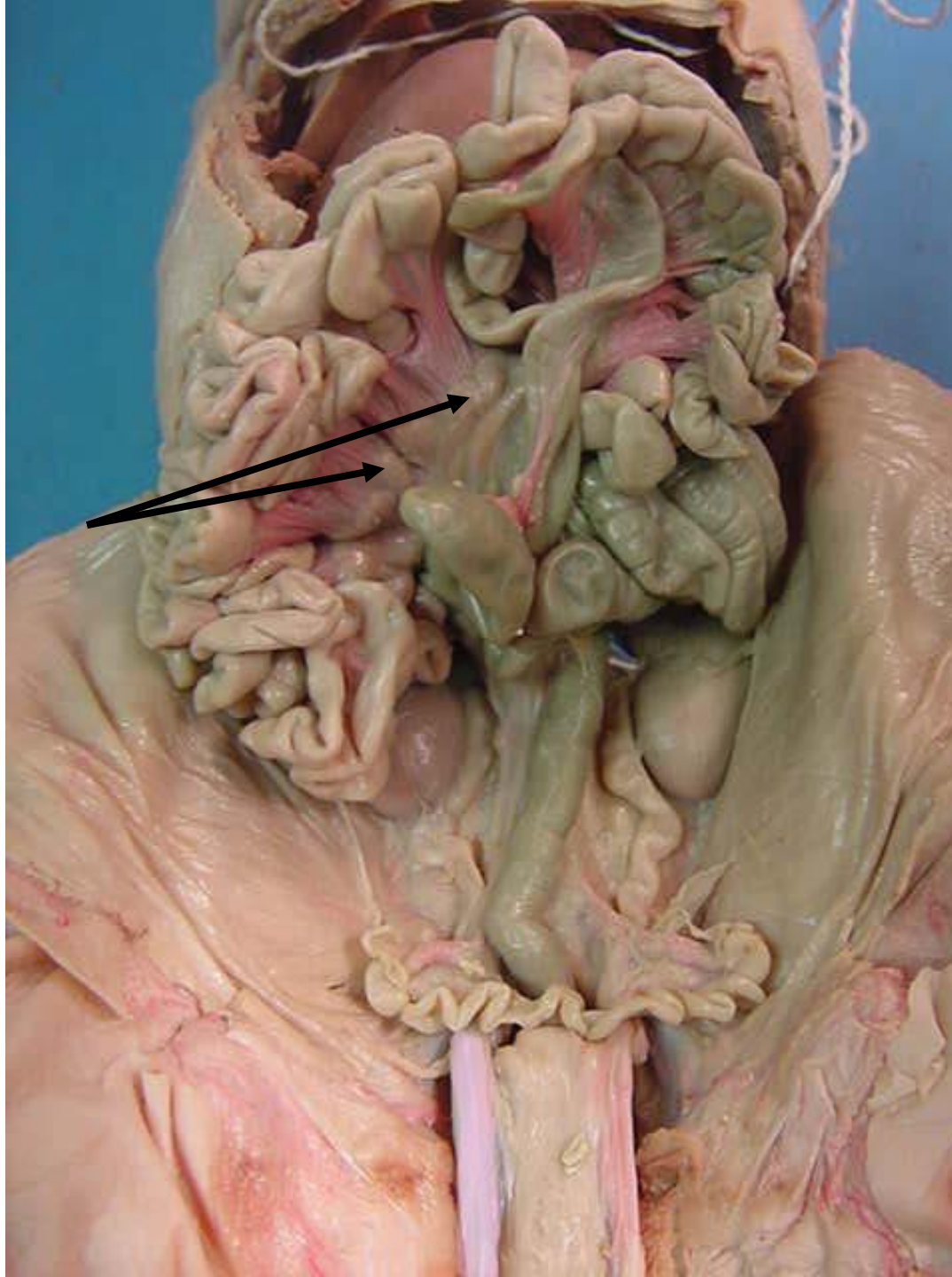
cecum



*scroll to the next slide to check your answer

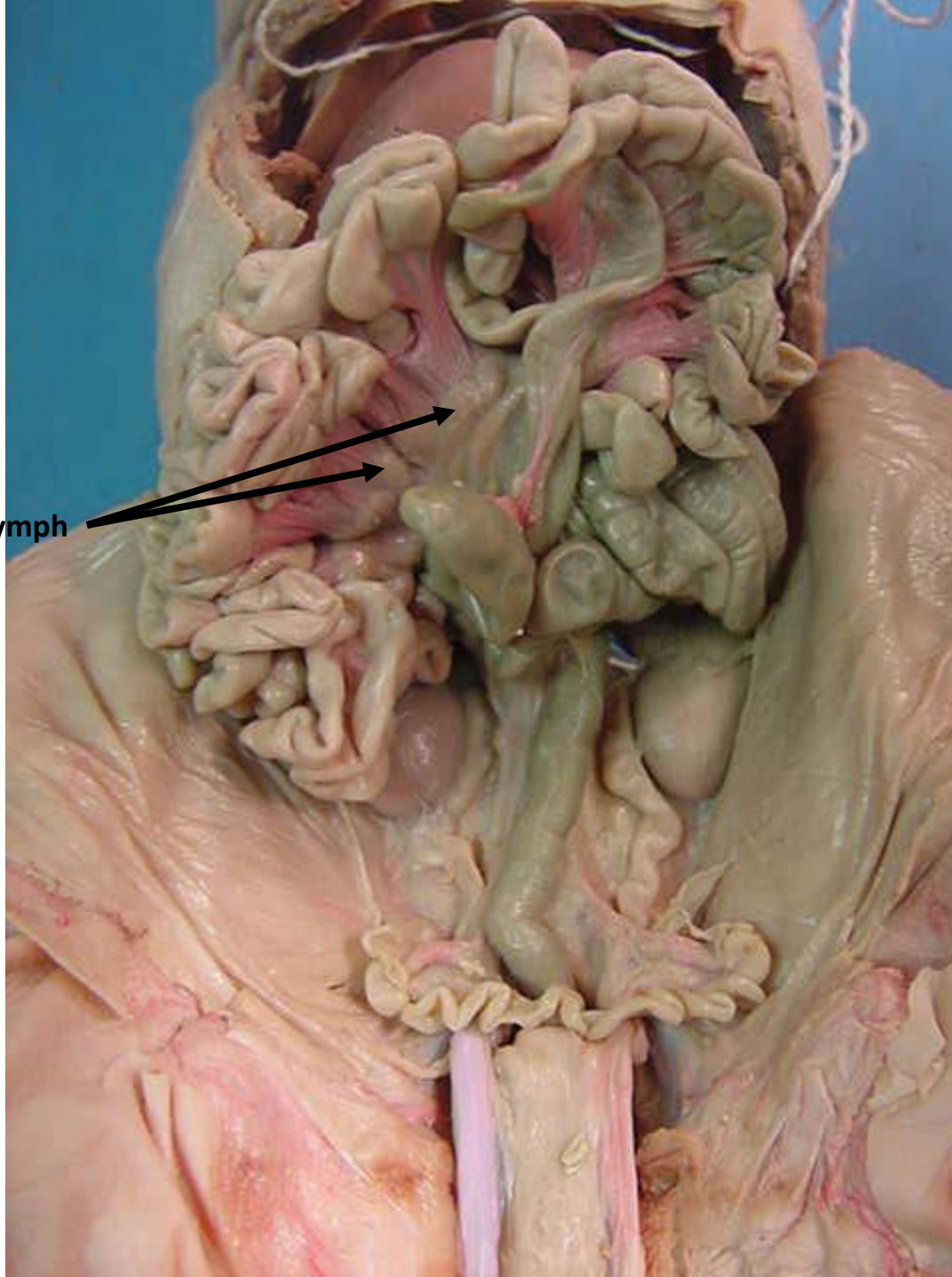


Renal artery



*scroll to the next slide to check your answer

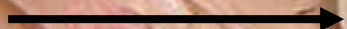
**Mesenteric lymph
nodes**





*scroll to the
next slide to
check your
answer

Ovary

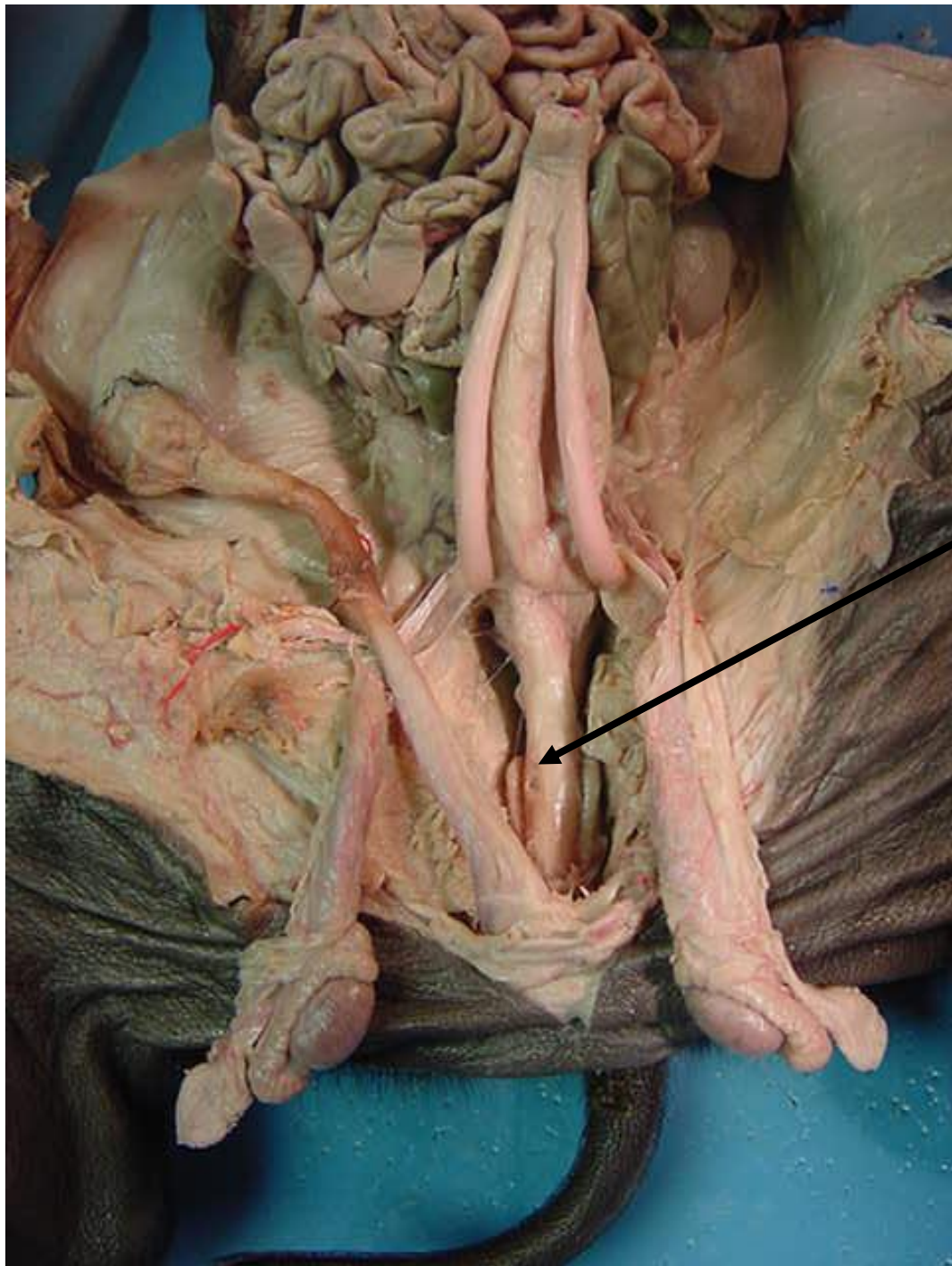




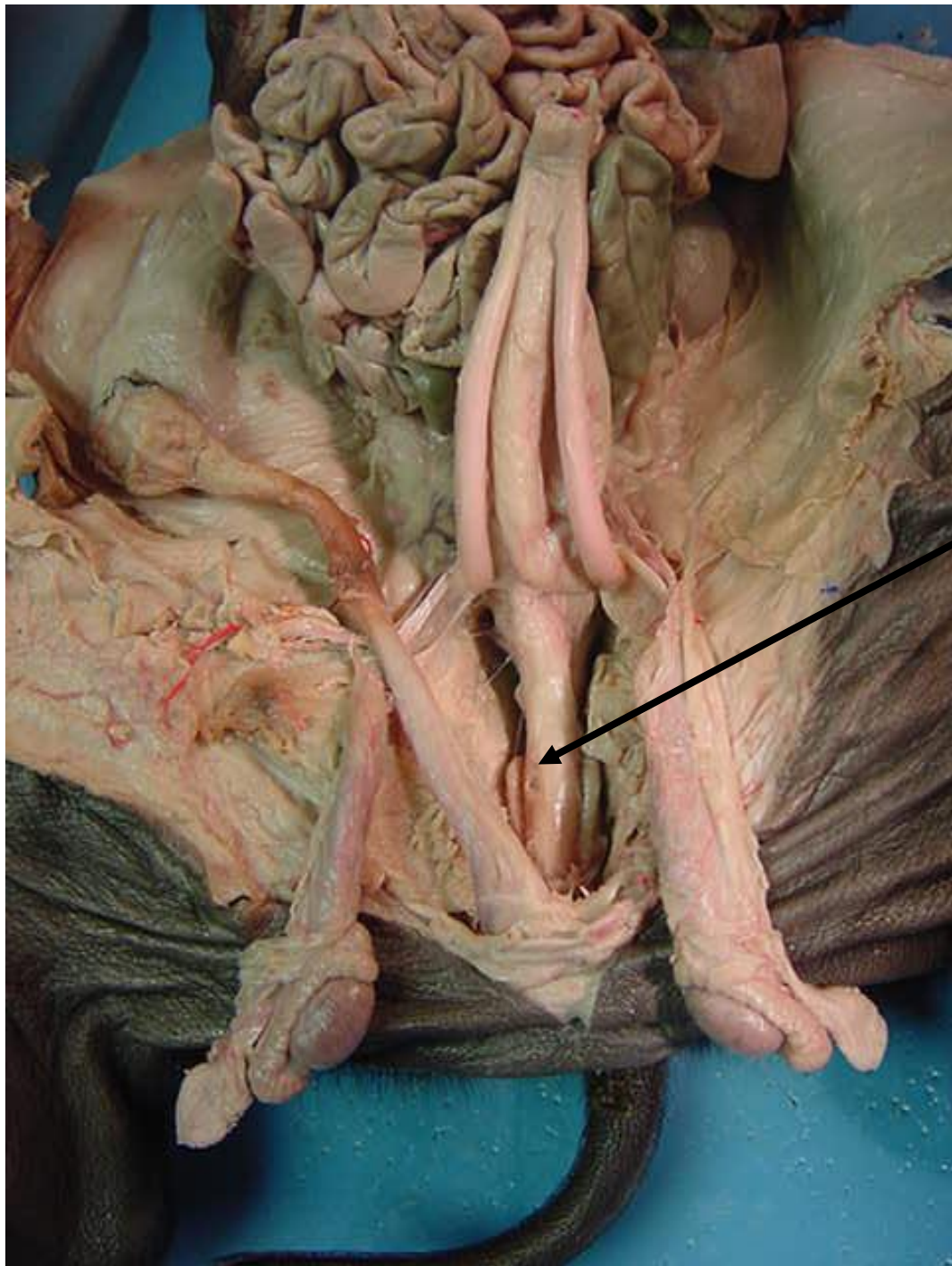
*scroll to the
next slide to
check your
answer

Glans penis





*scroll to the next slide to check your answer



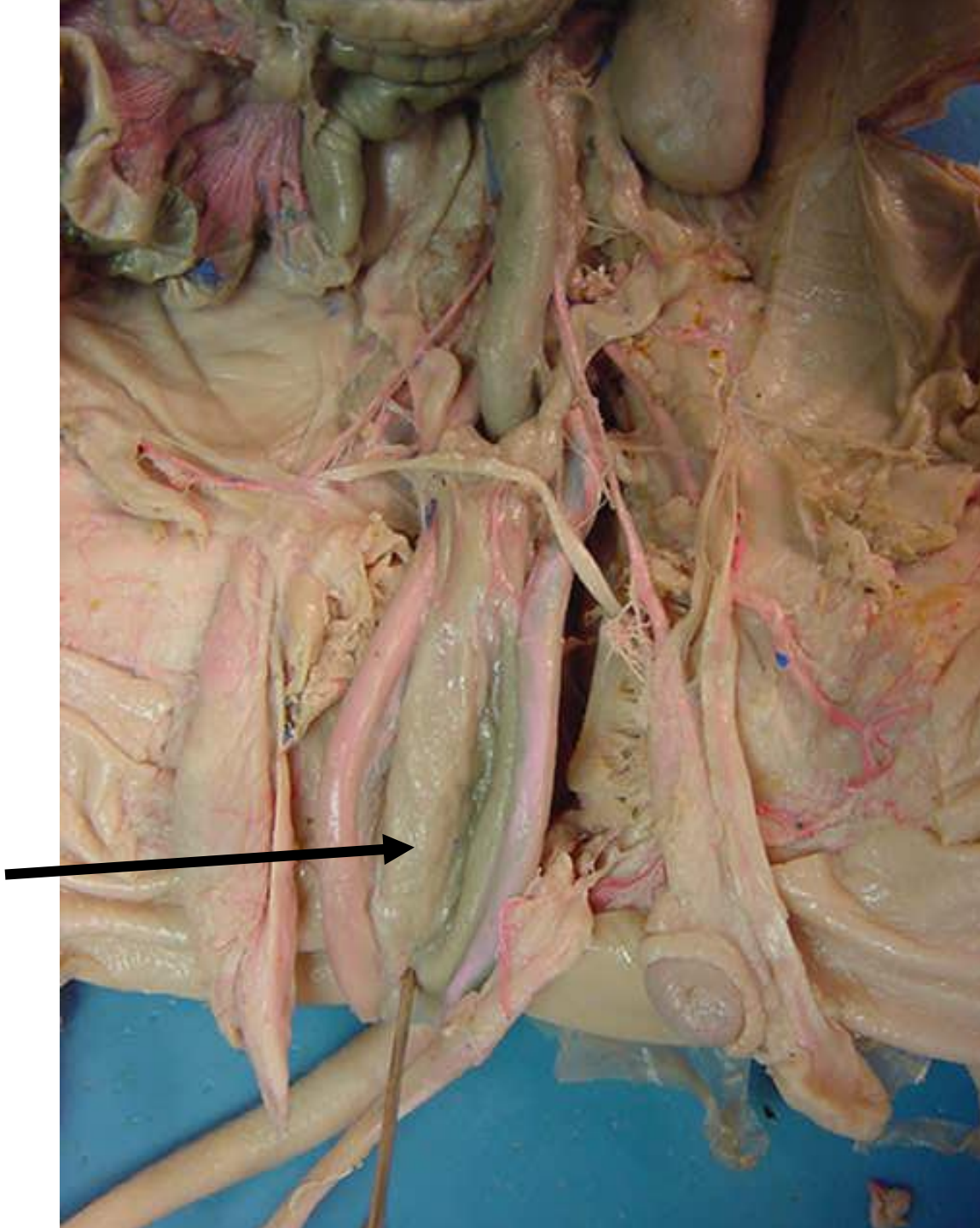
Urethra



*scroll to the next slide to check your answer



Testis



*scroll to the
next slide to
check your
answer

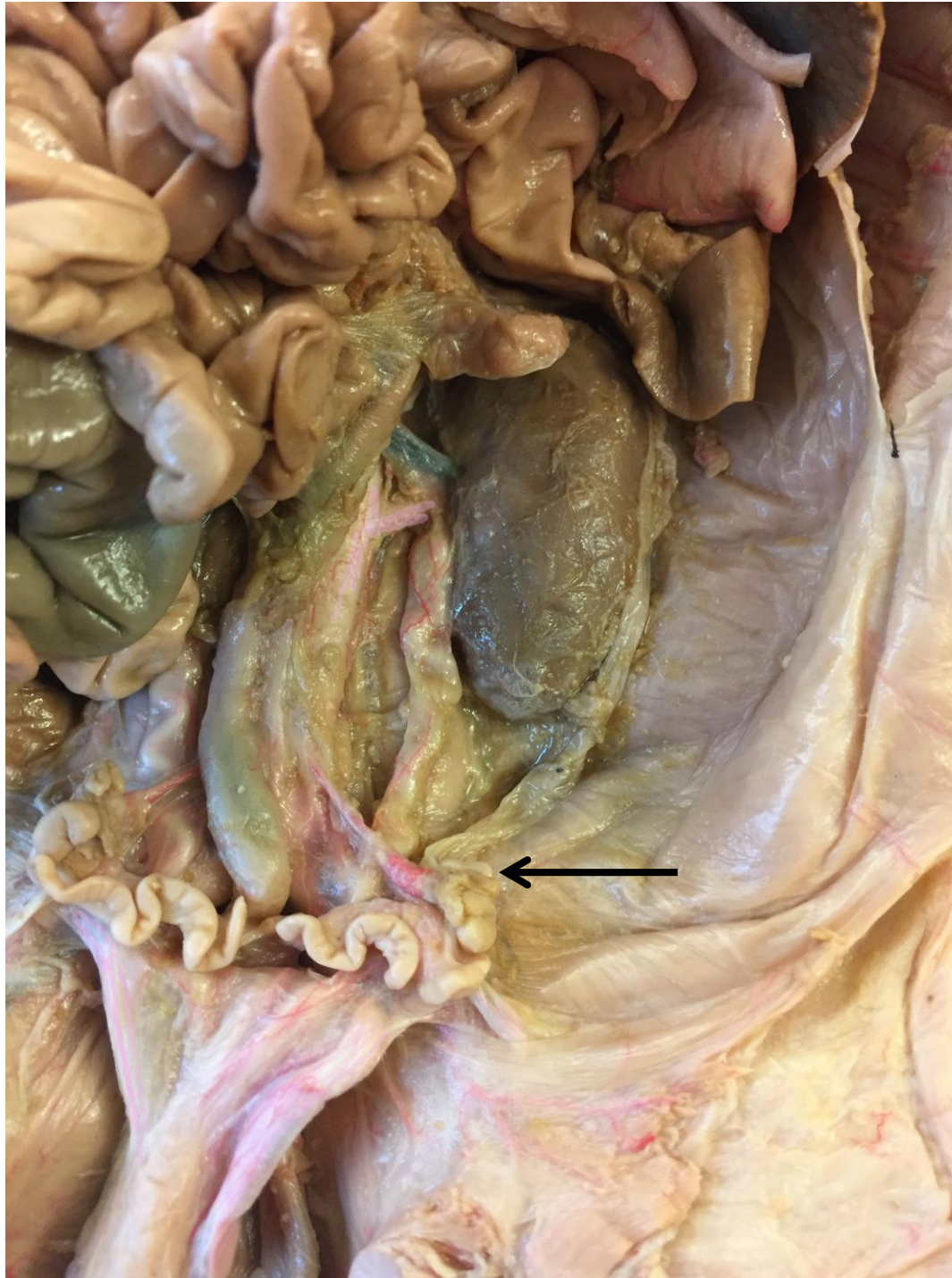
Urinary bladder





*scroll to the
next slide to
check your
answer





*scroll to the
next slide to
check your
answer

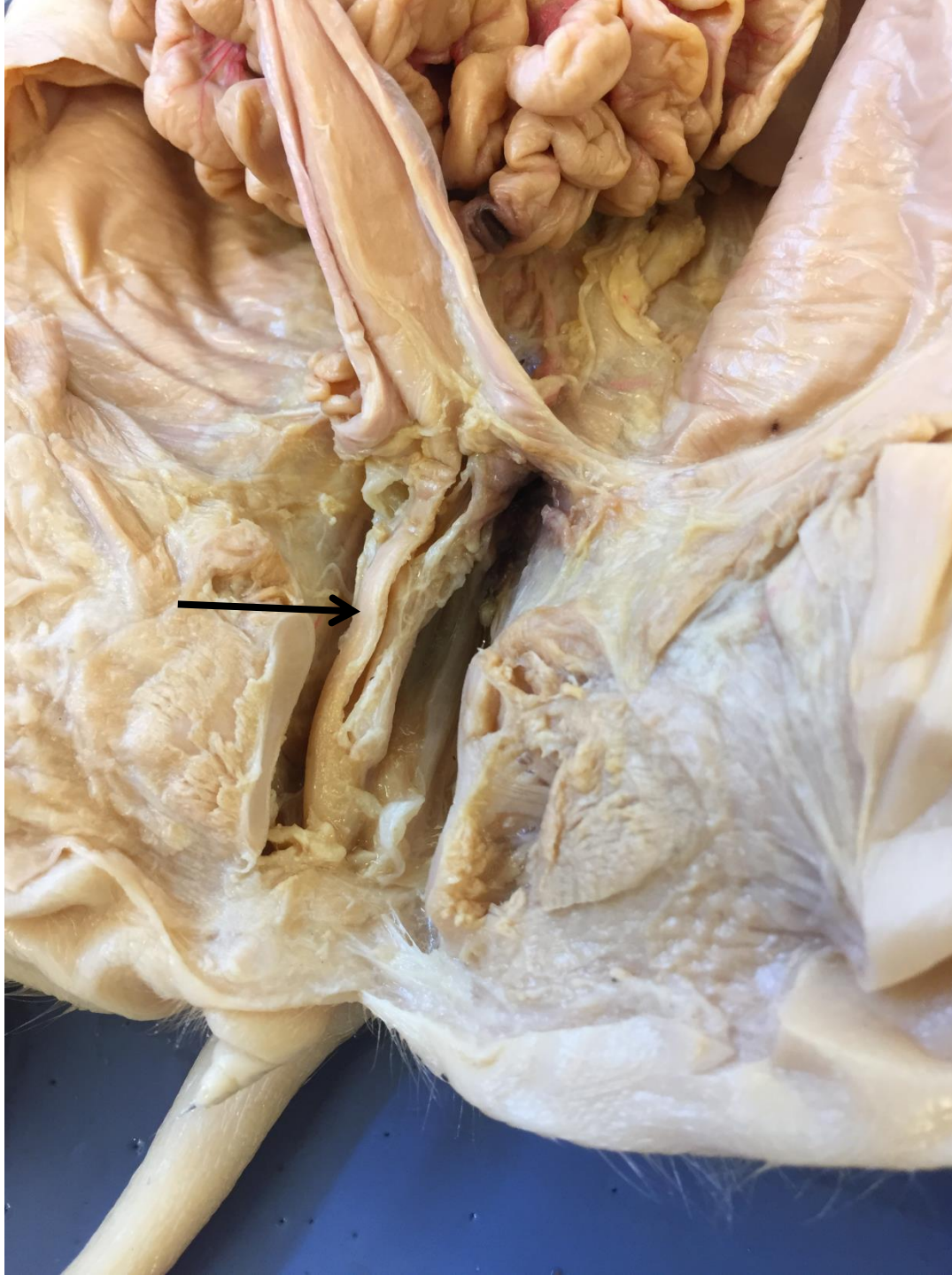


Fallopian tube

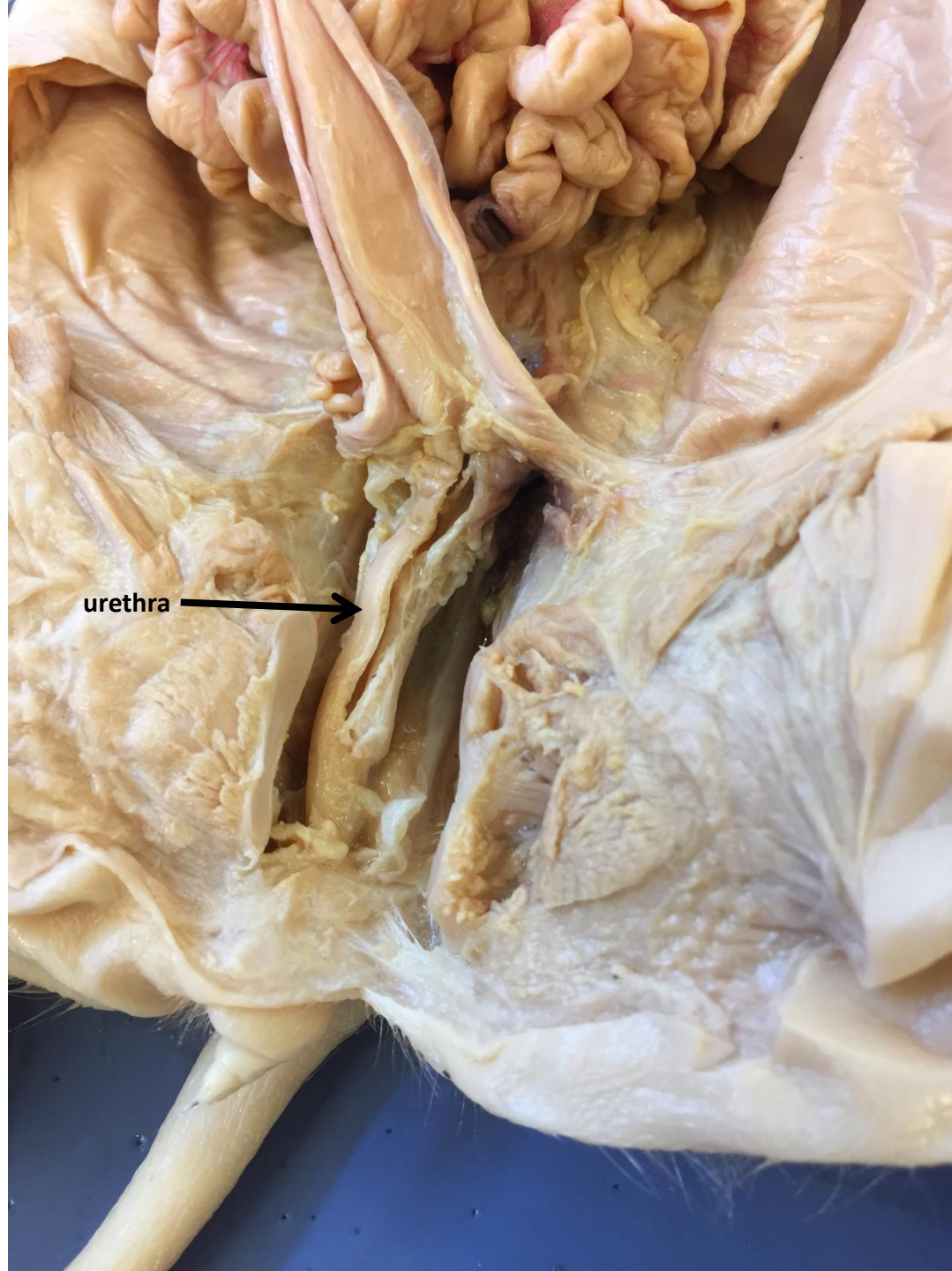


*scroll to the
next slide to
check your
answer

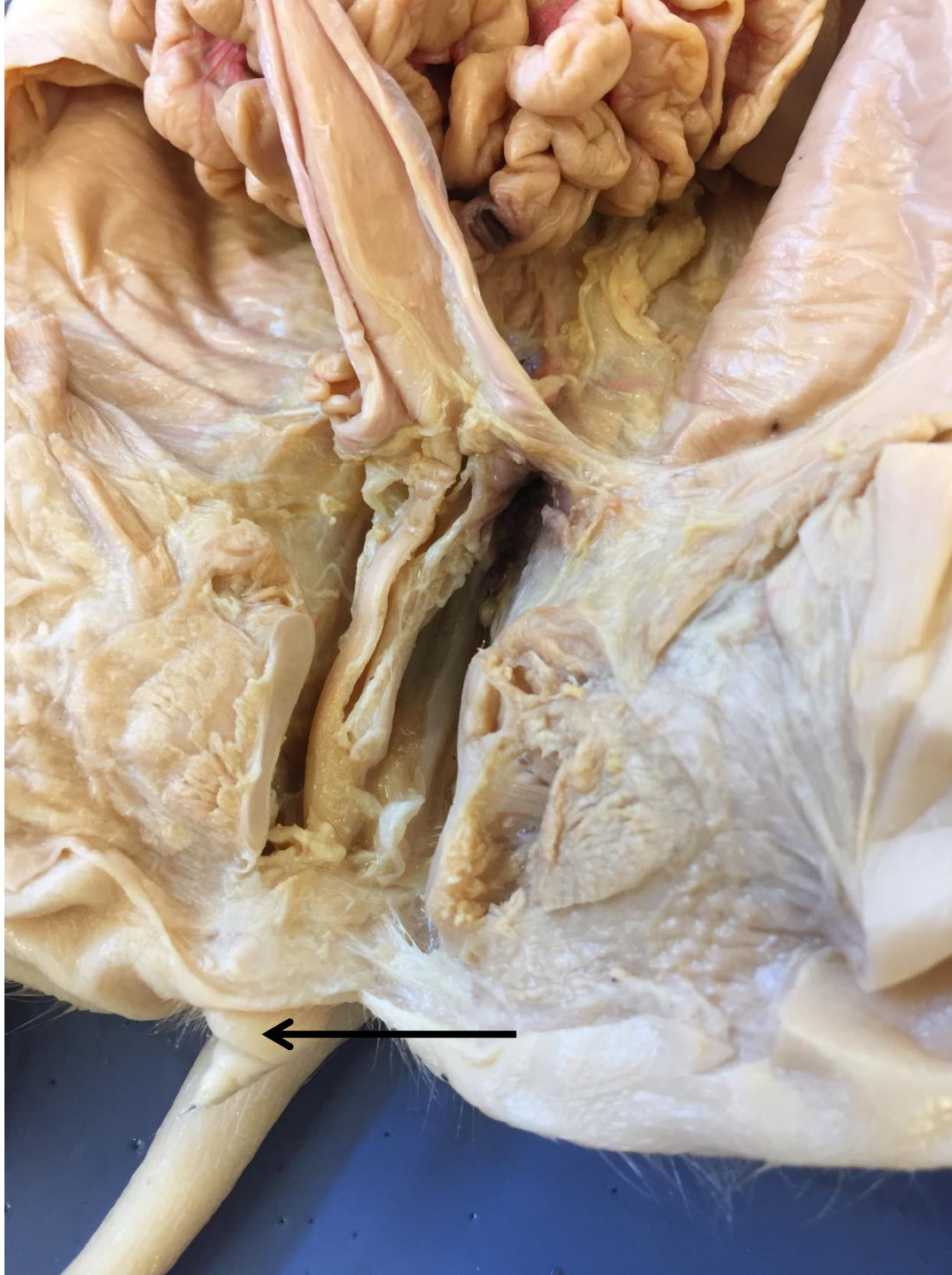




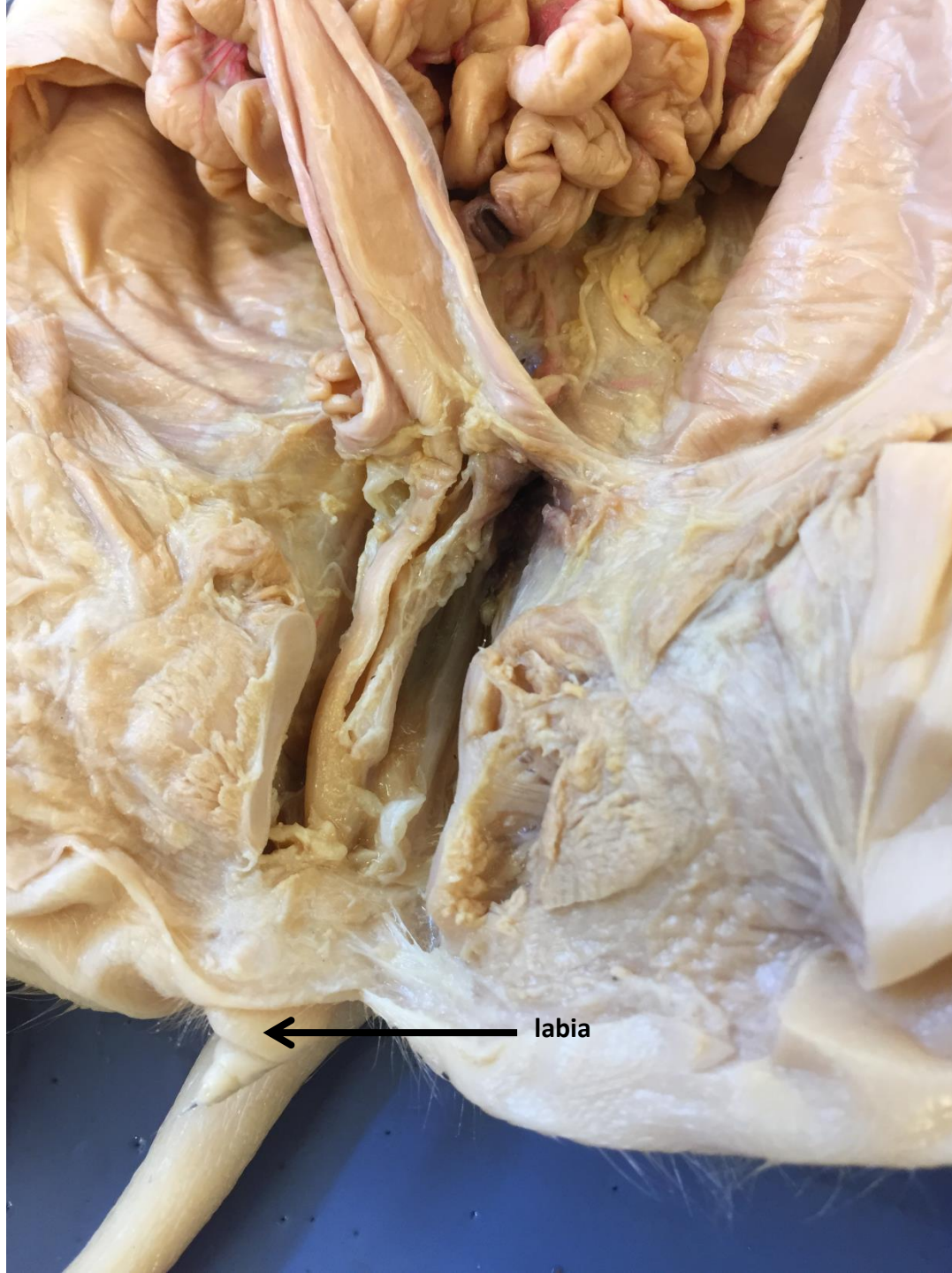
*scroll to the
next slide to
check your
answer



urethra



*scroll to the next slide to check your answer



← labia