

Fetal Pig Practice Exam

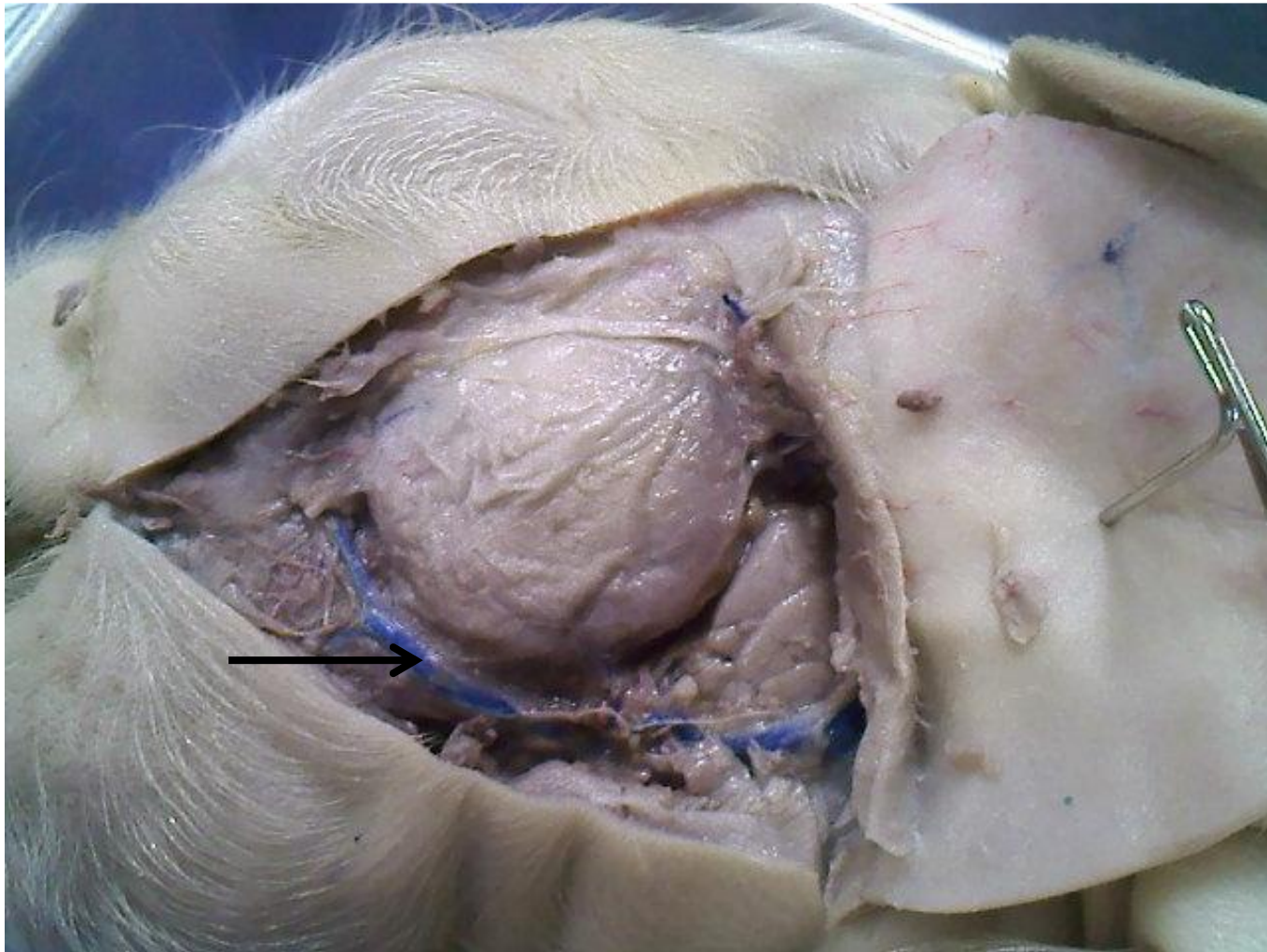
#4

Name the following structures indicated by the arrows.

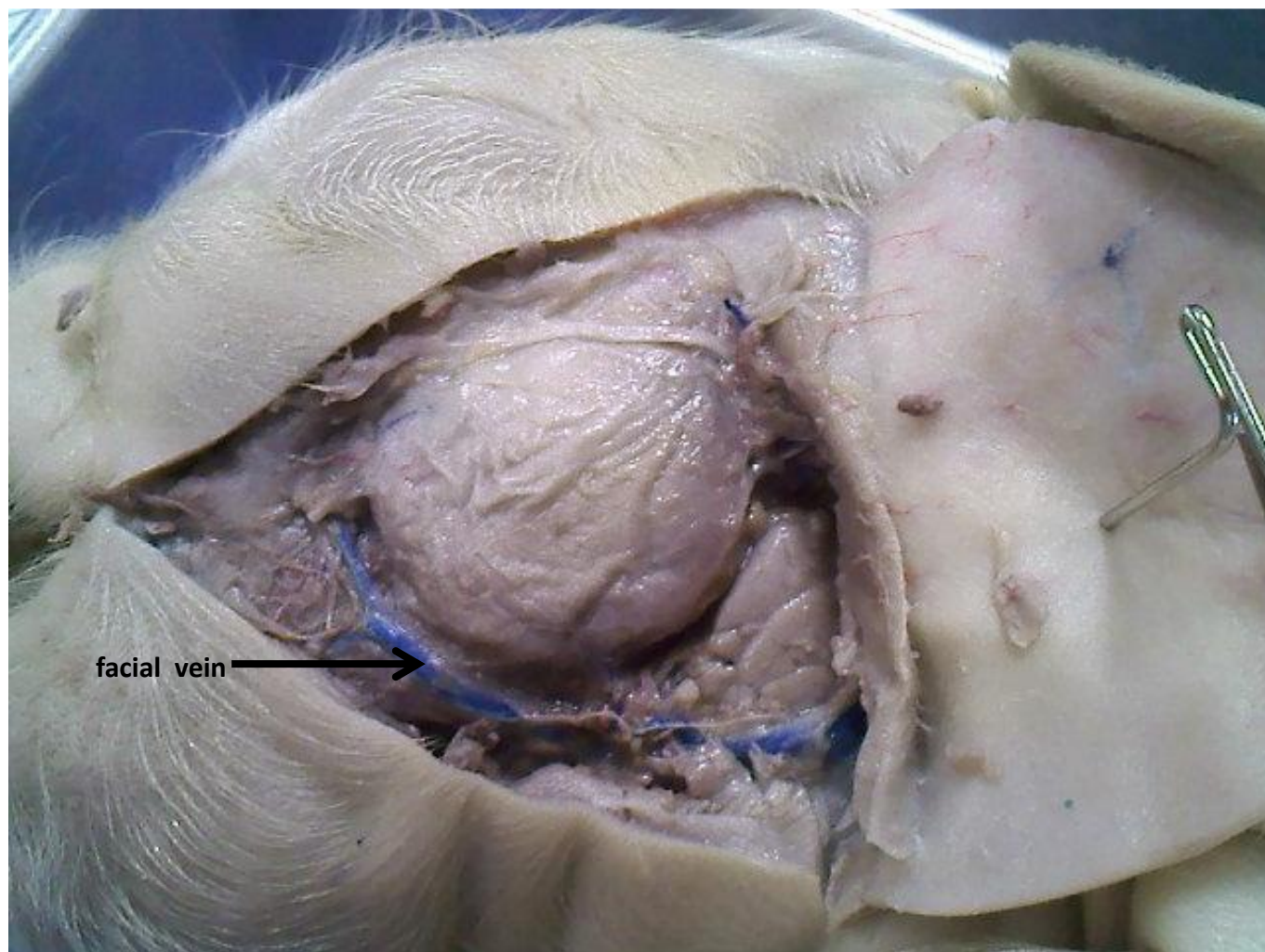
Scroll to the next slide to see the answer.

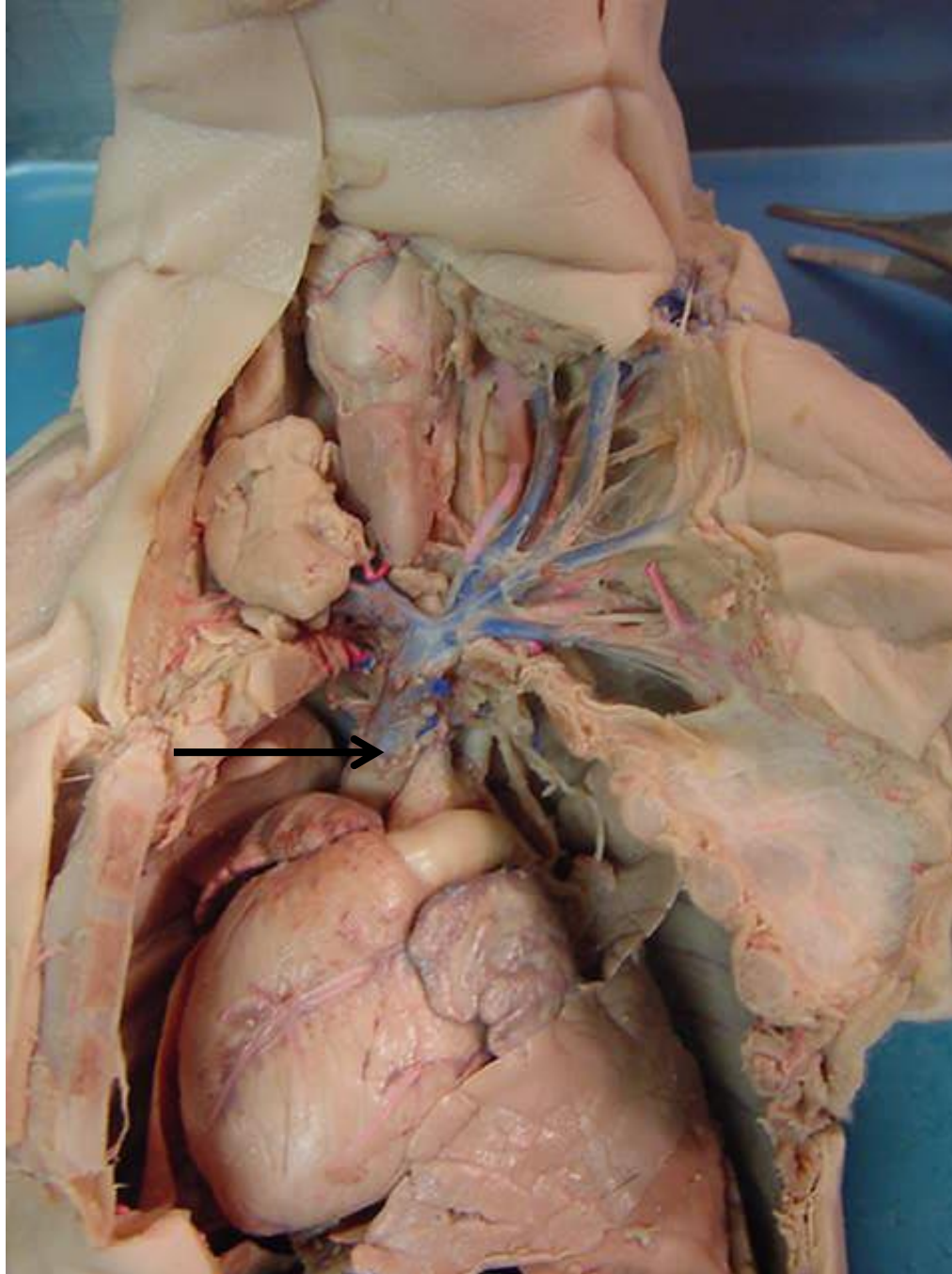
*For best results on these practice exams, write your answers on paper before scrolling to see the correct answer. Try to answer within a minute (remember your lab exams will be timed) and make sure to check your spelling!

*note: not every structure you are required to know will be on this practice exercise so make sure you review the checklist of structures (p. 178-179 in your lab manual) when preparing for your lab exam



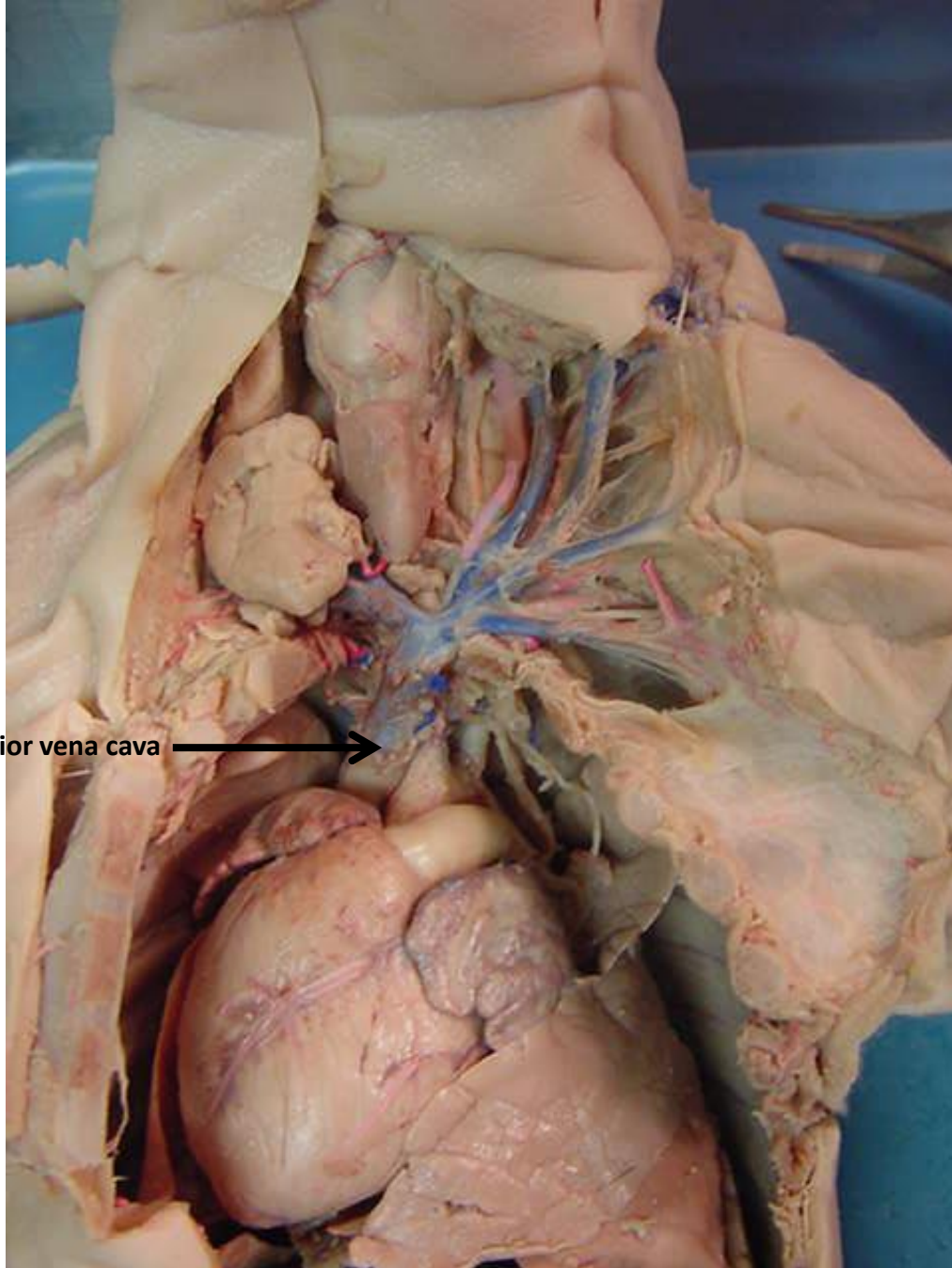
*scroll to the next slide
to check your answer

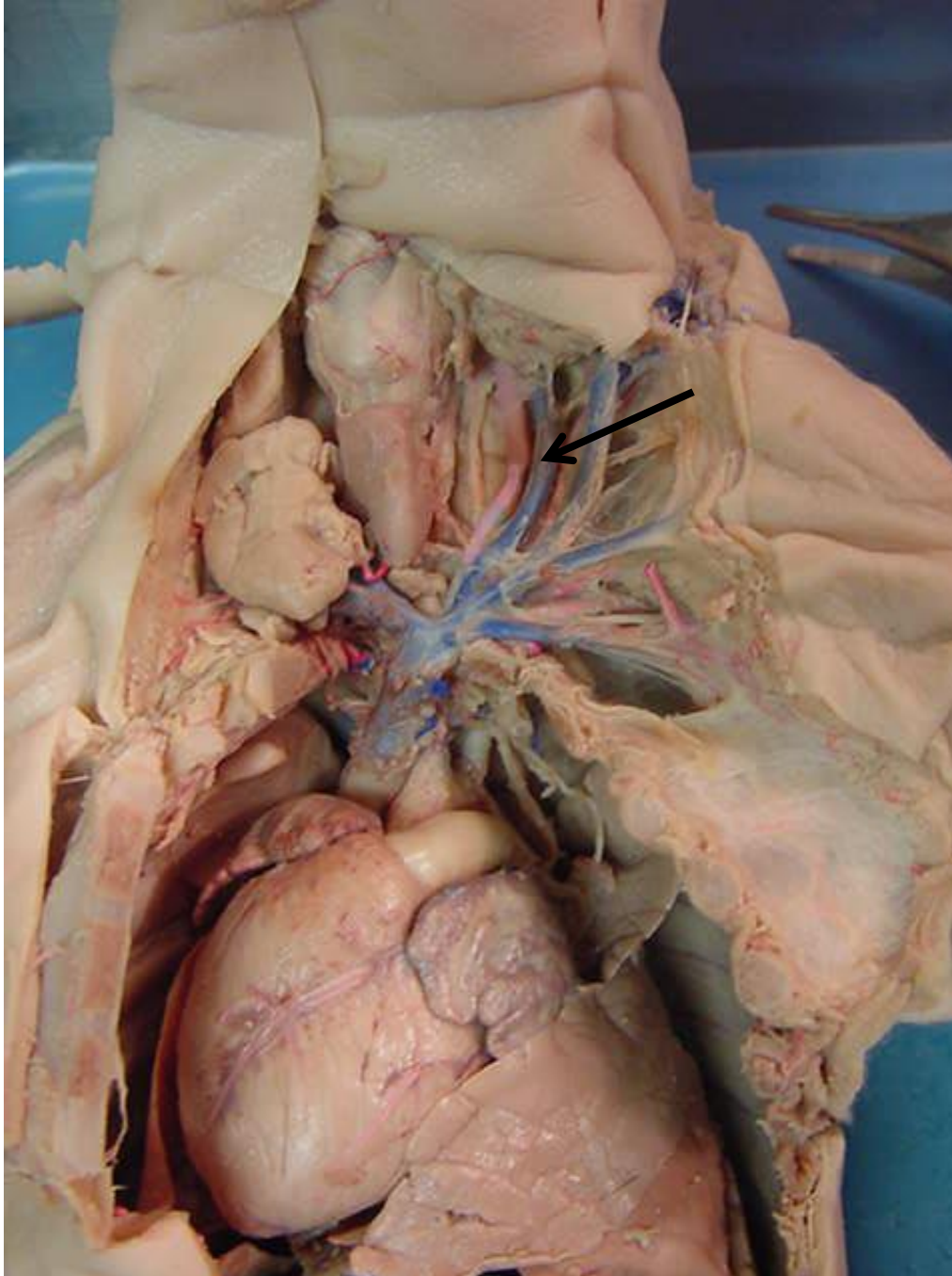




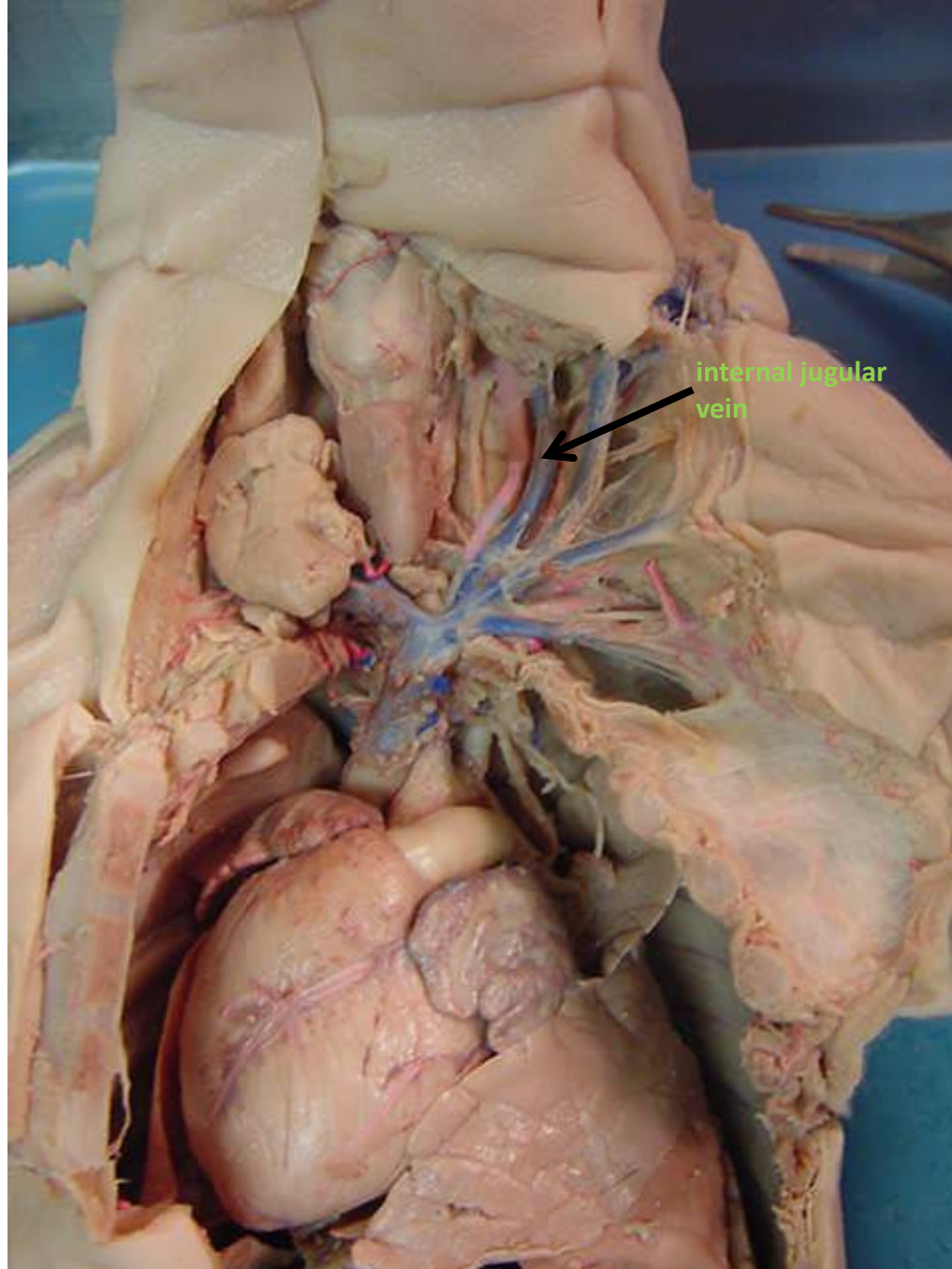
*scroll to the next slide
to check your answer

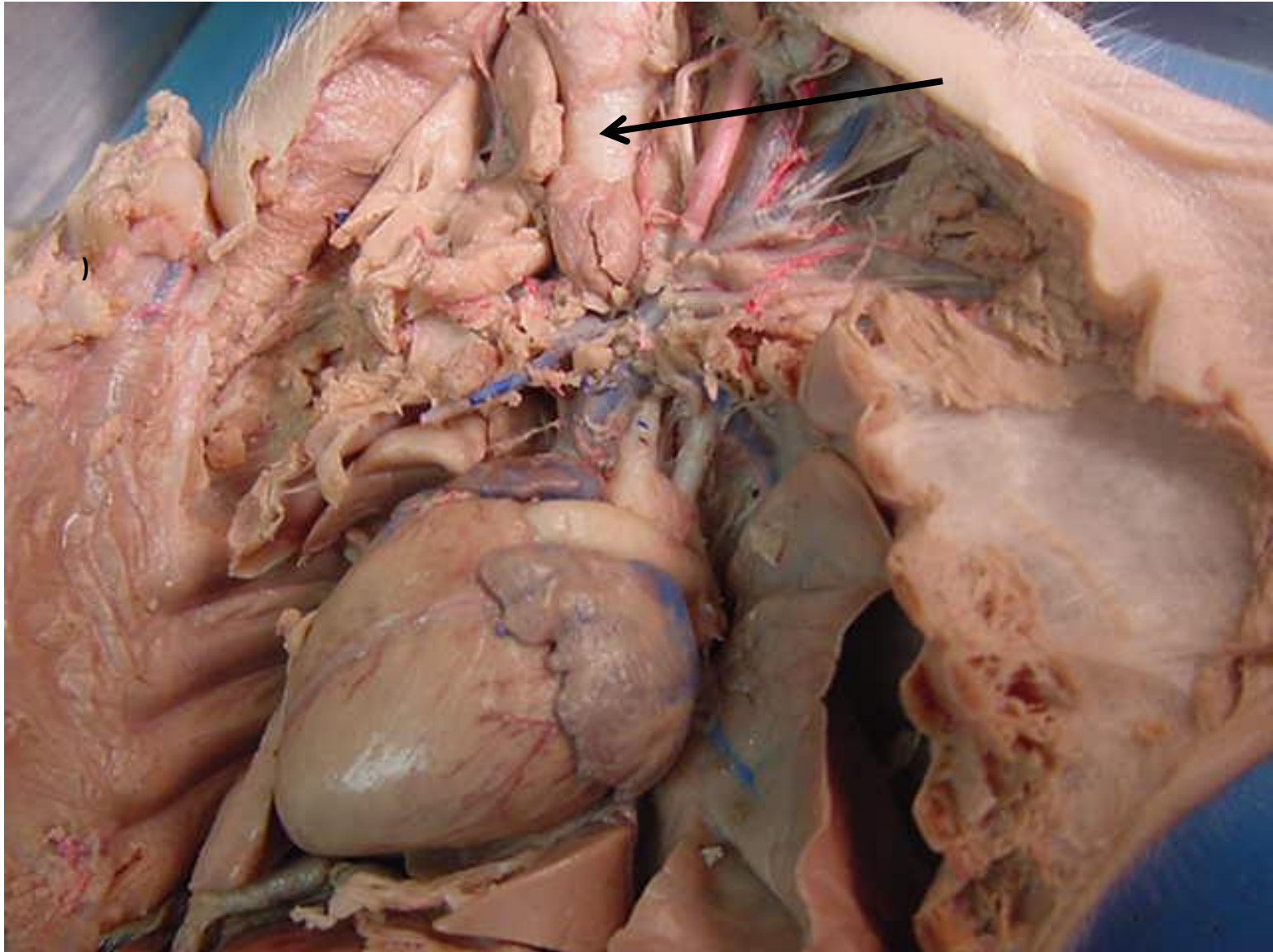
anterior vena cava →



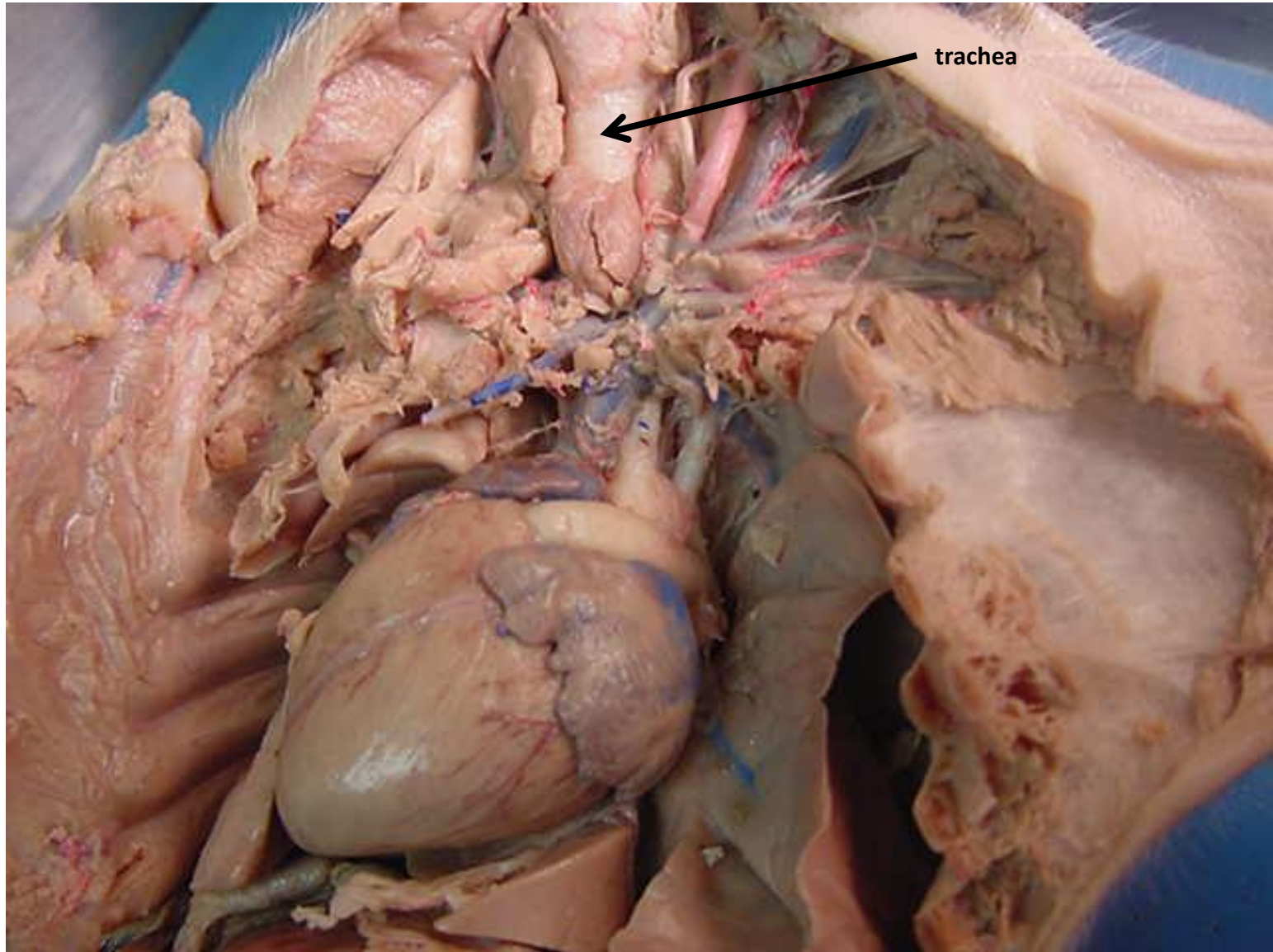


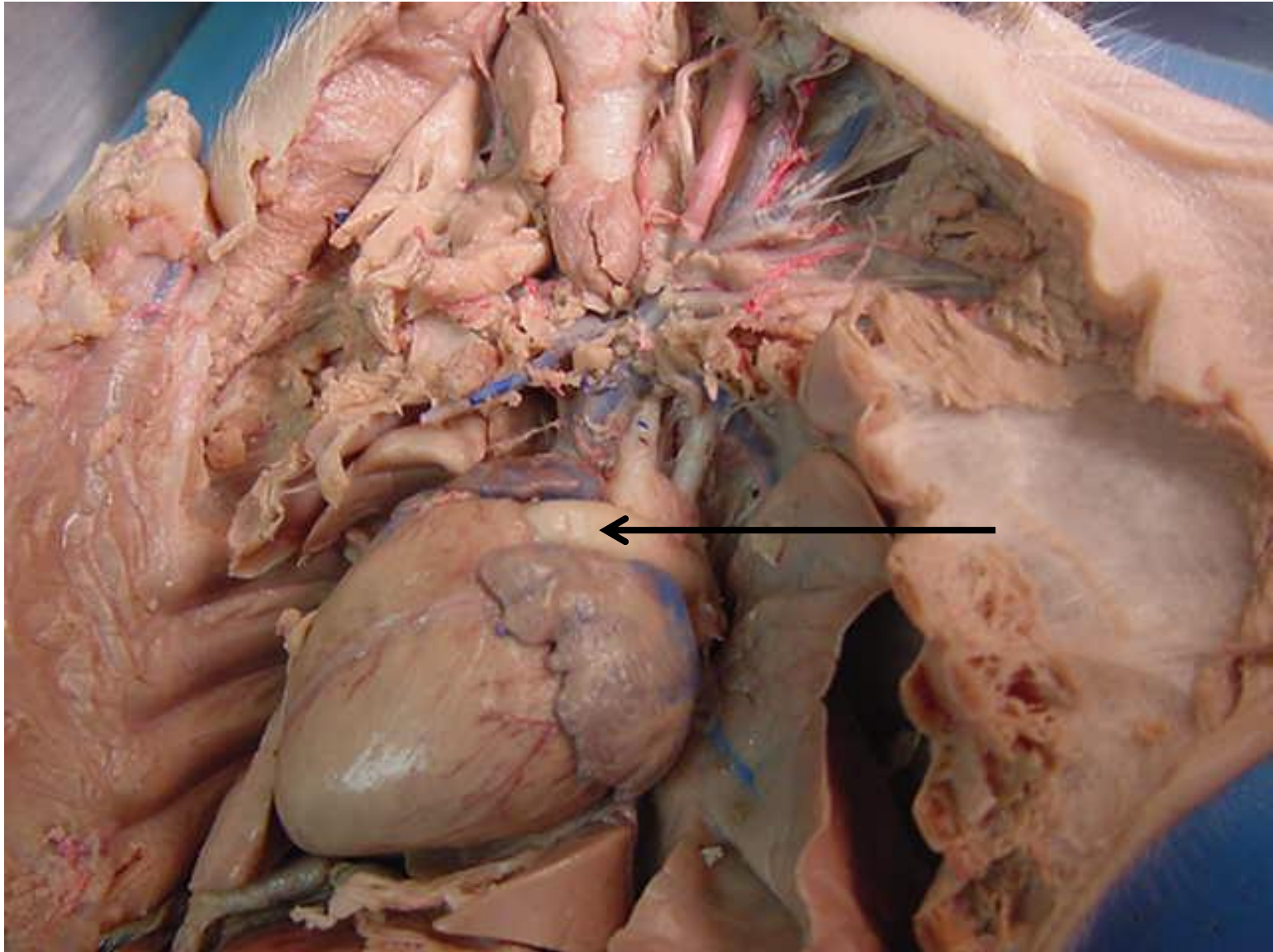
*scroll to the next slide
to check your answer



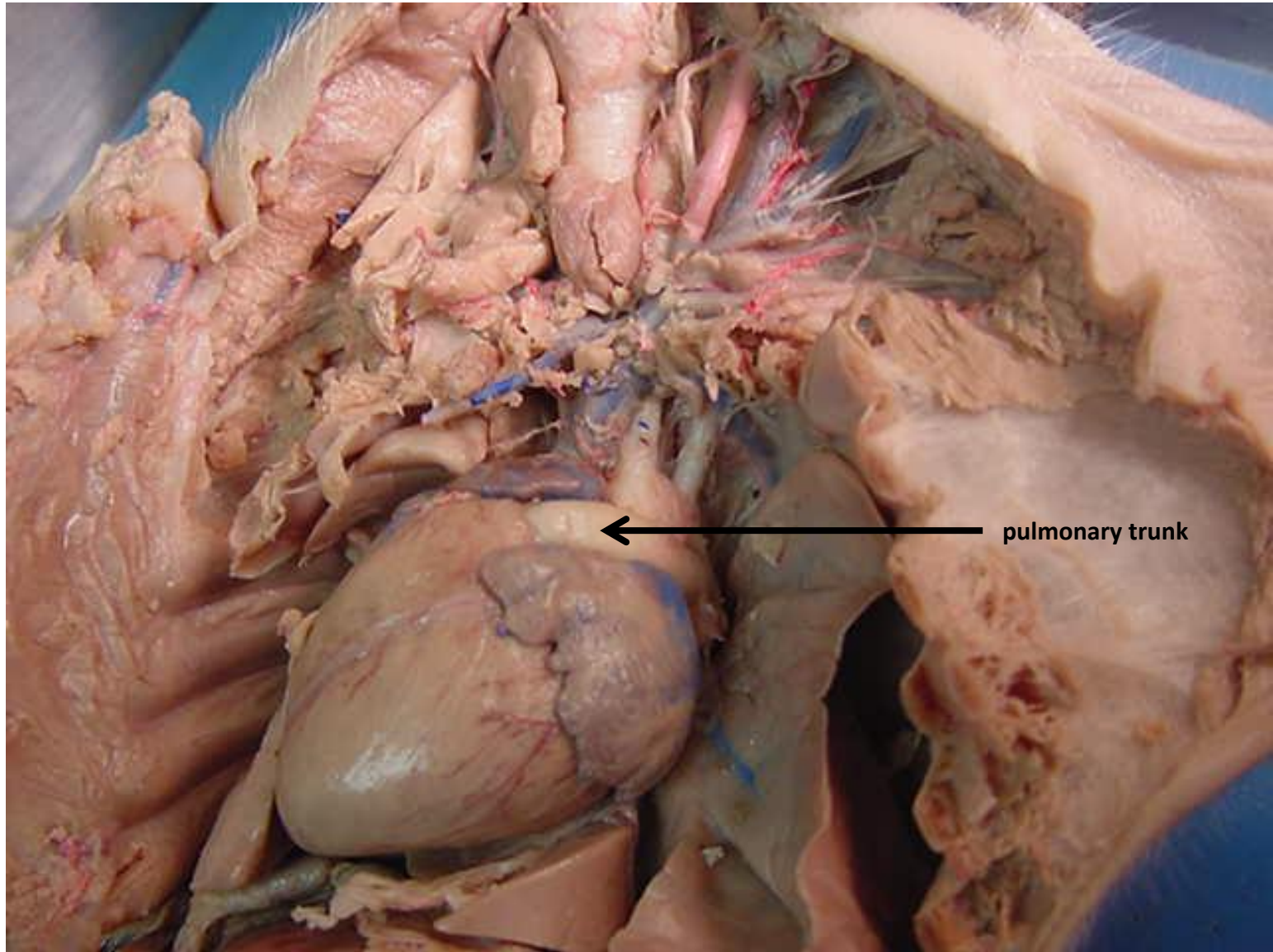


*scroll to the next slide
to check your answer

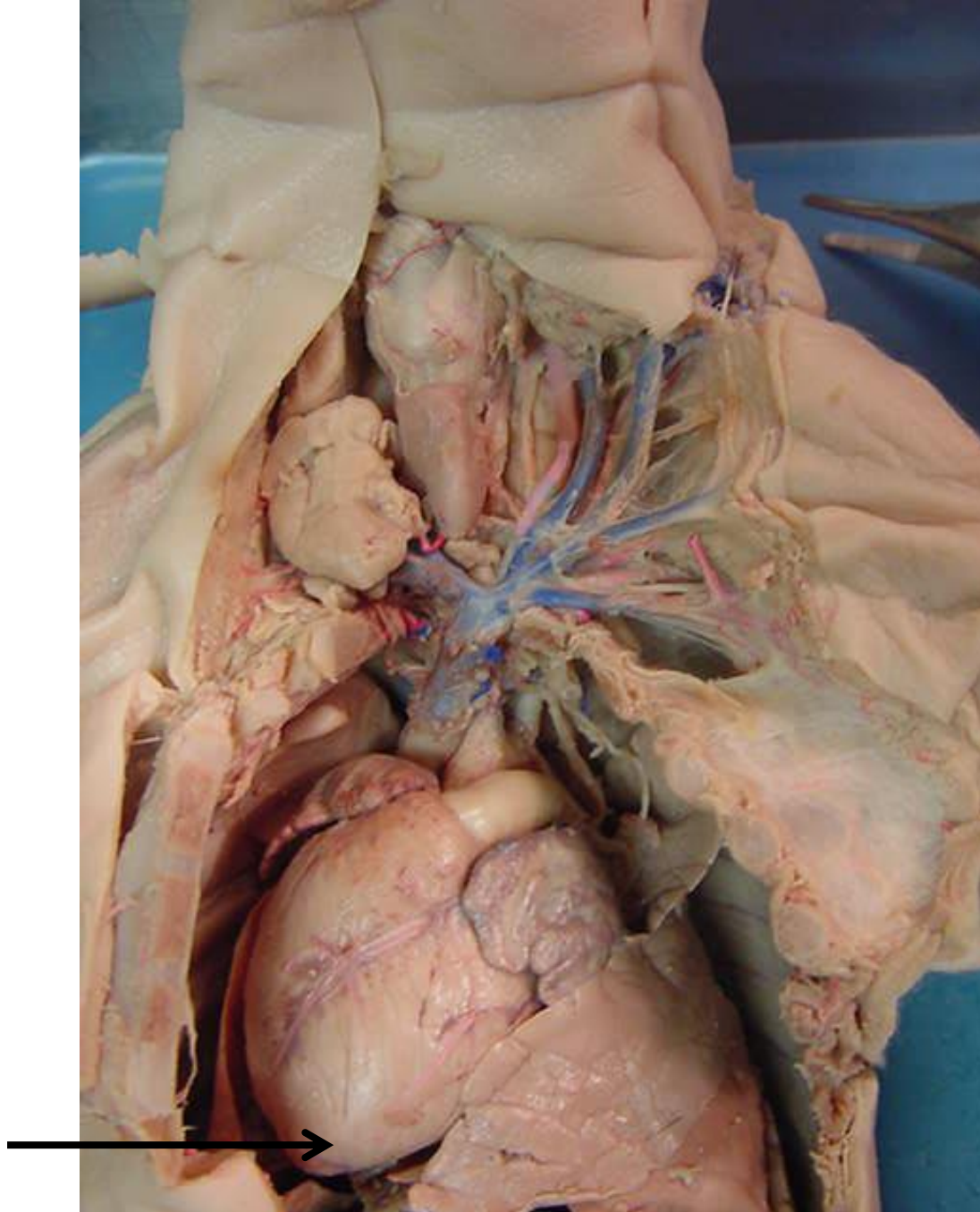




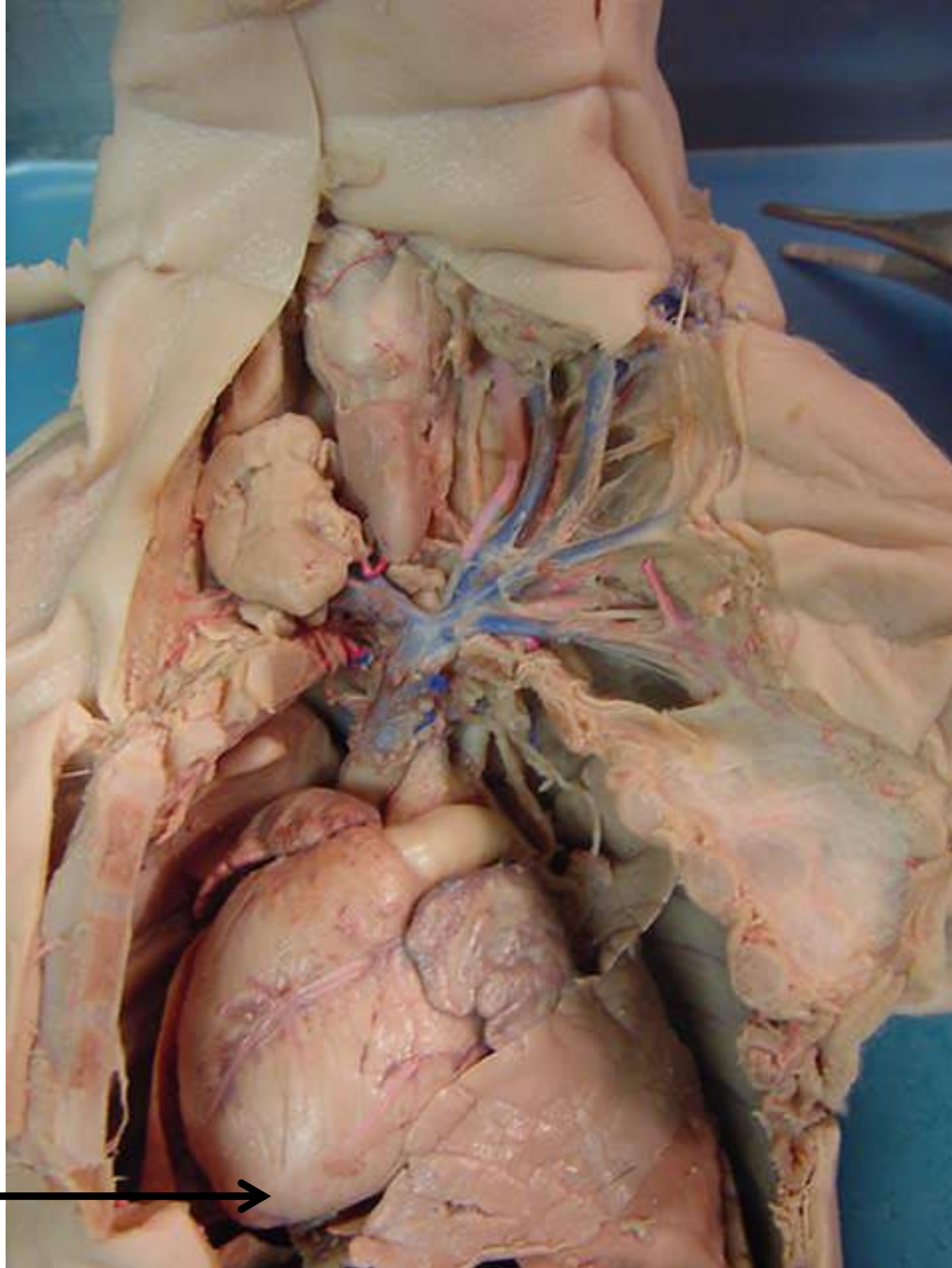
*scroll to the next slide
to check your answer



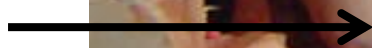
pulmonary trunk

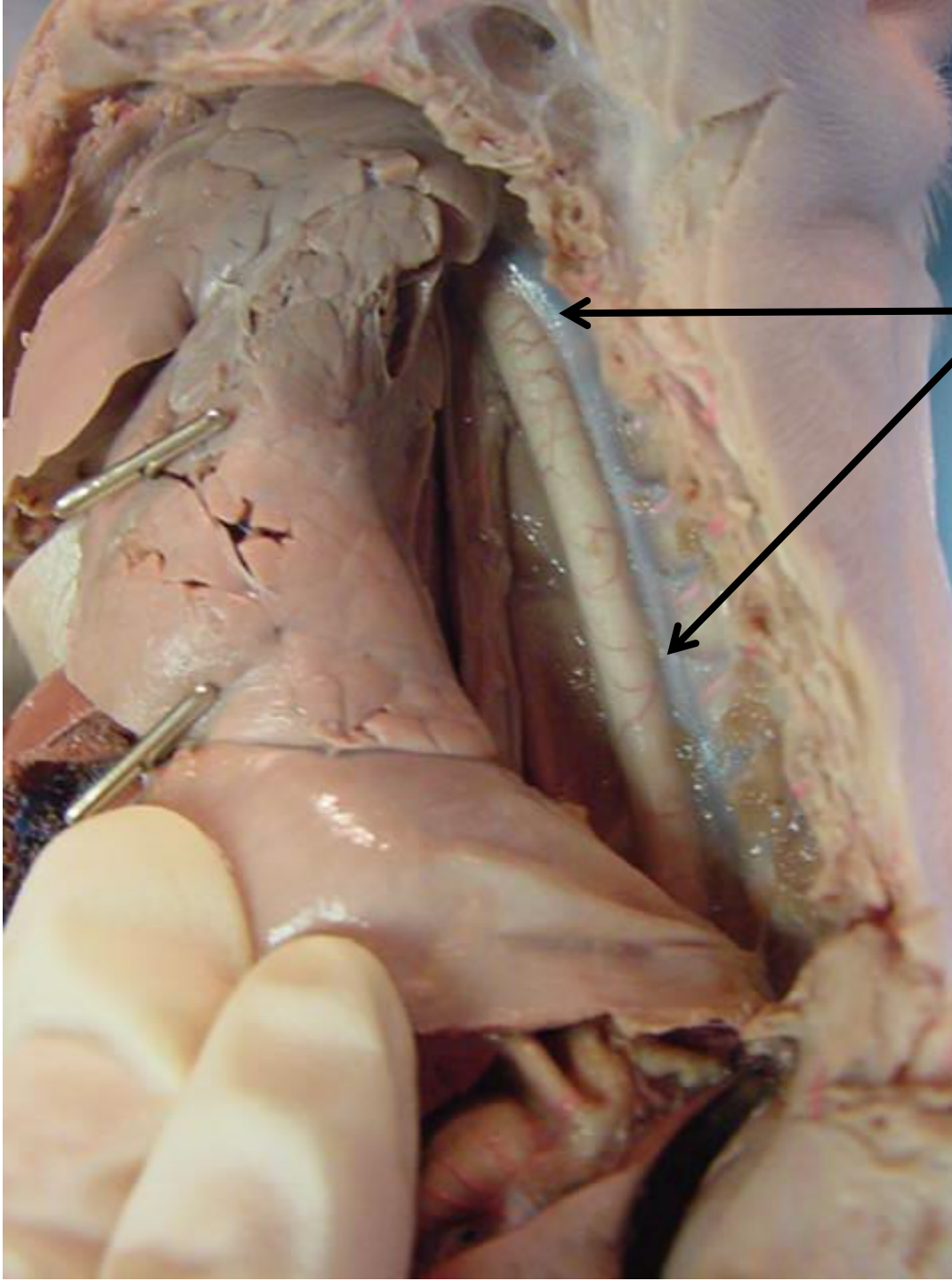


*scroll to the next slide
to check your answer

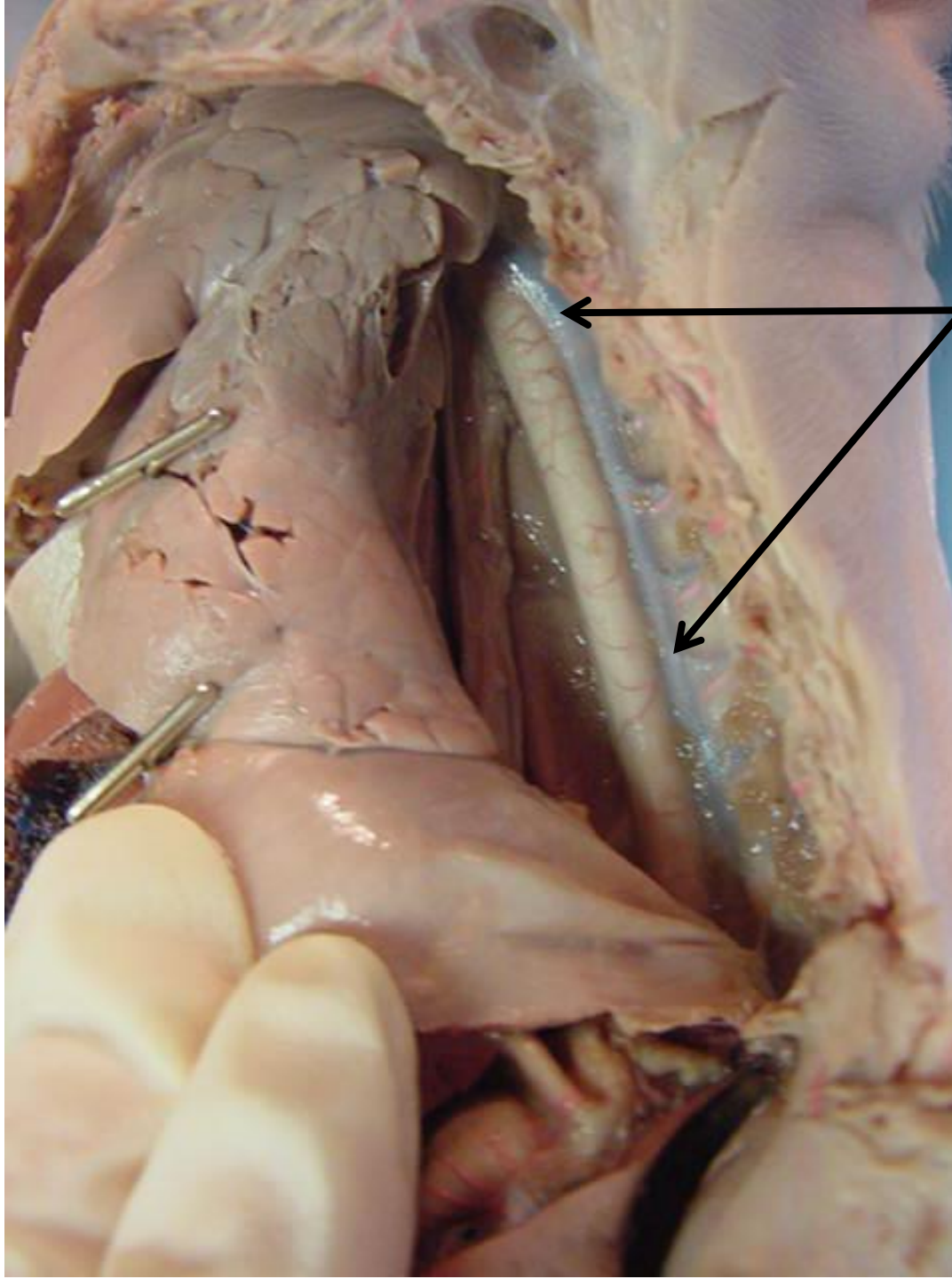


apex of heart

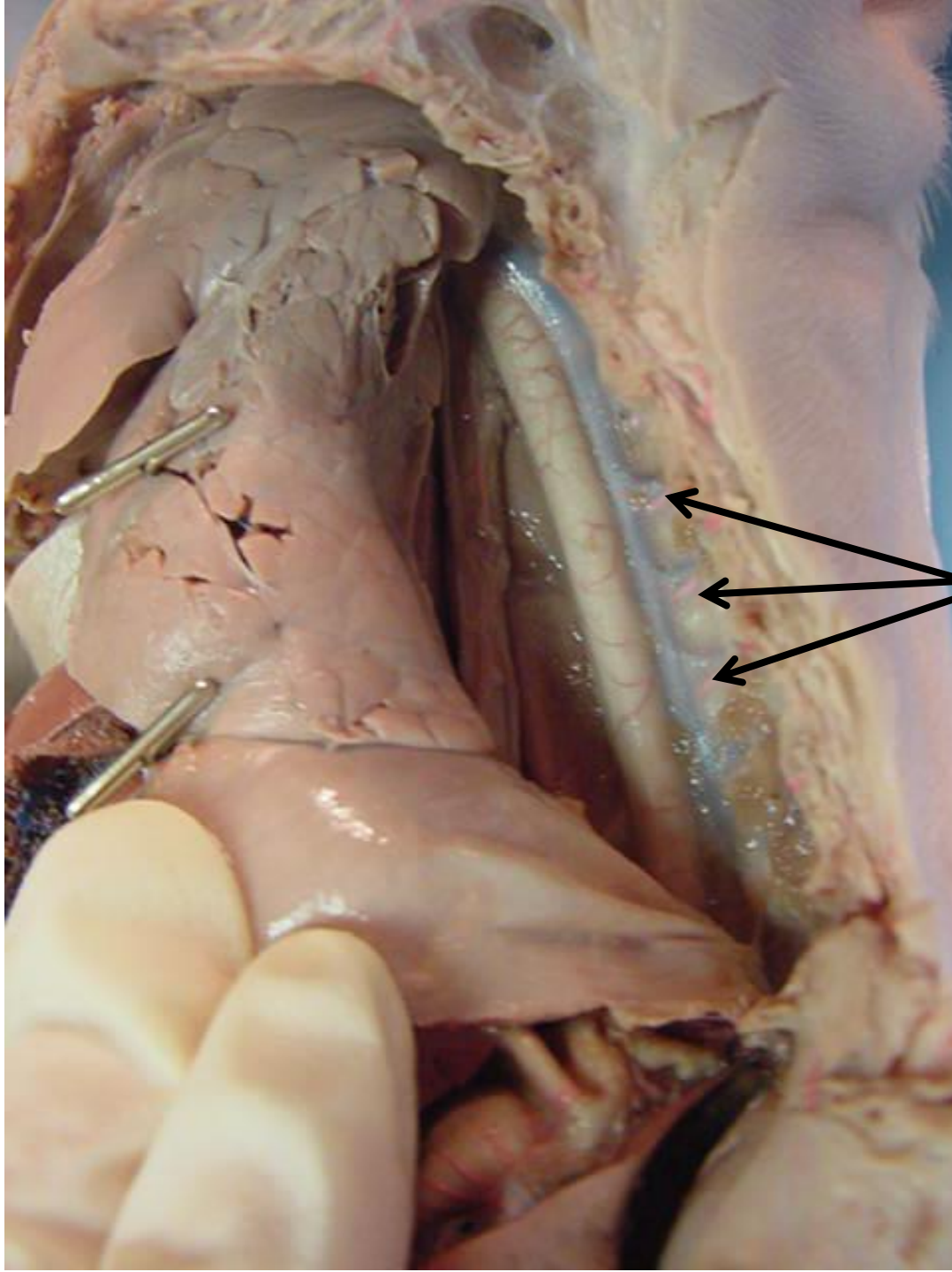




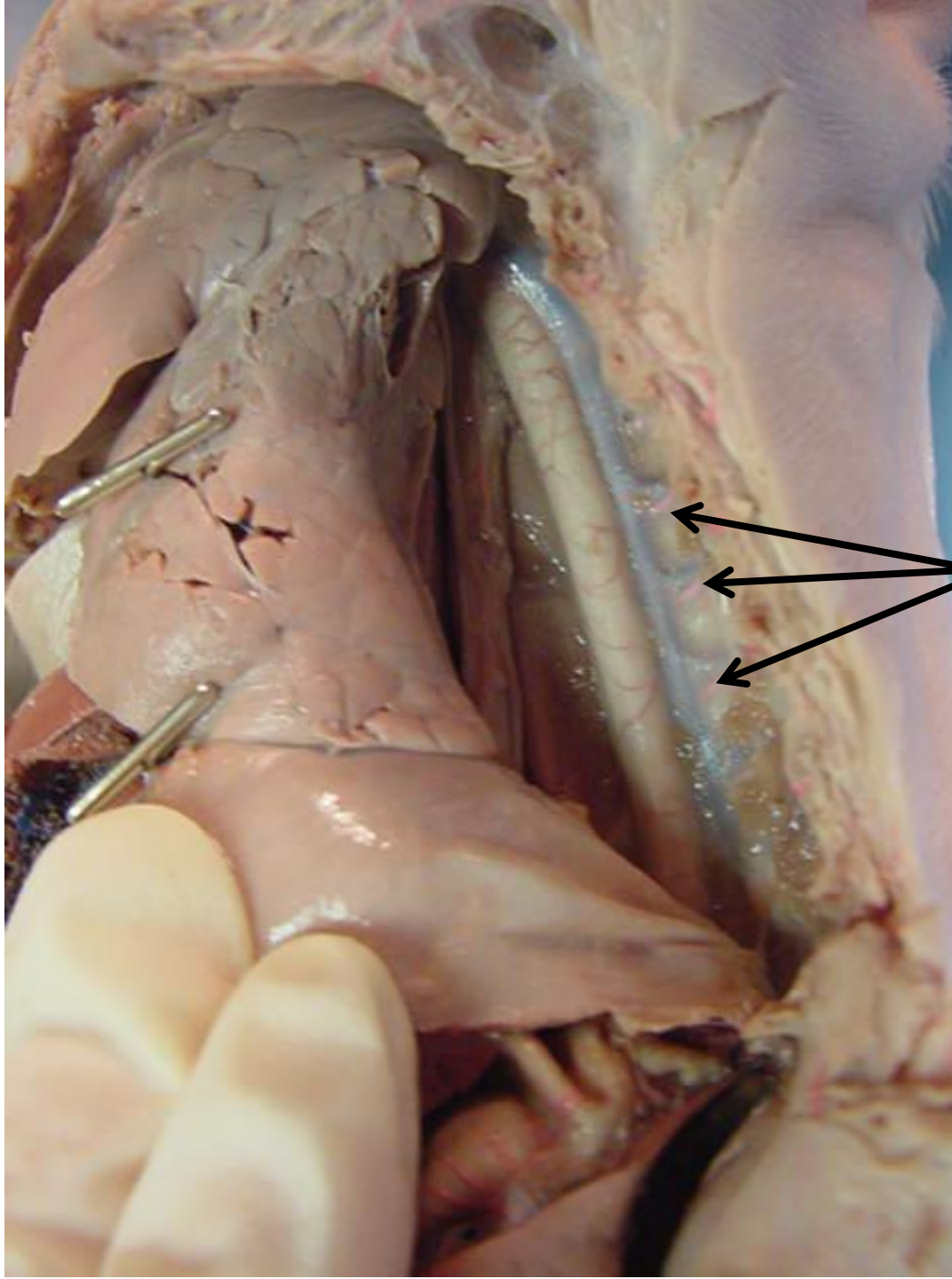
*scroll to the next slide
to check your answer



hemiazygos vein



*scroll to the next slide
to check your answer



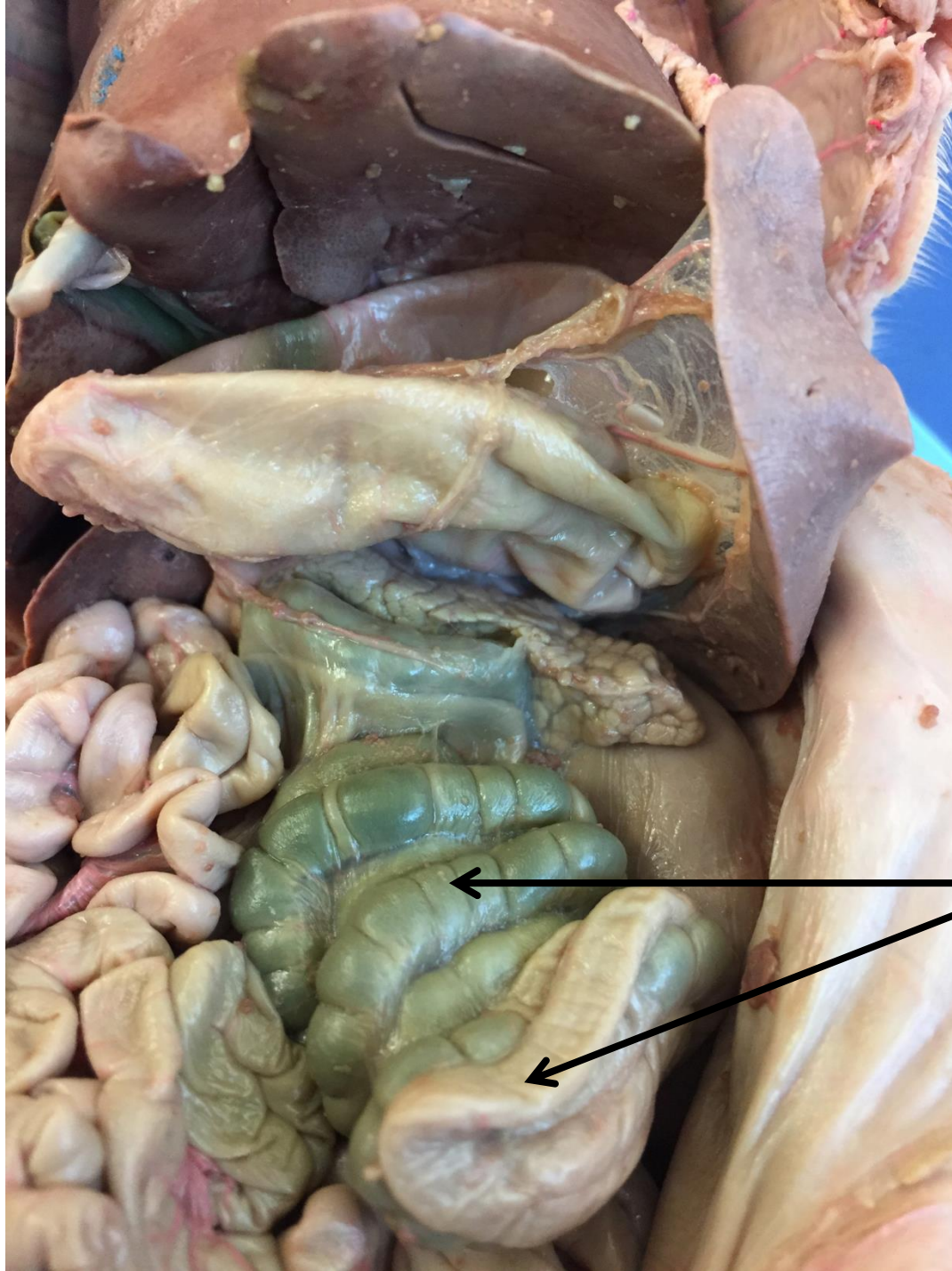
intercostal arteries



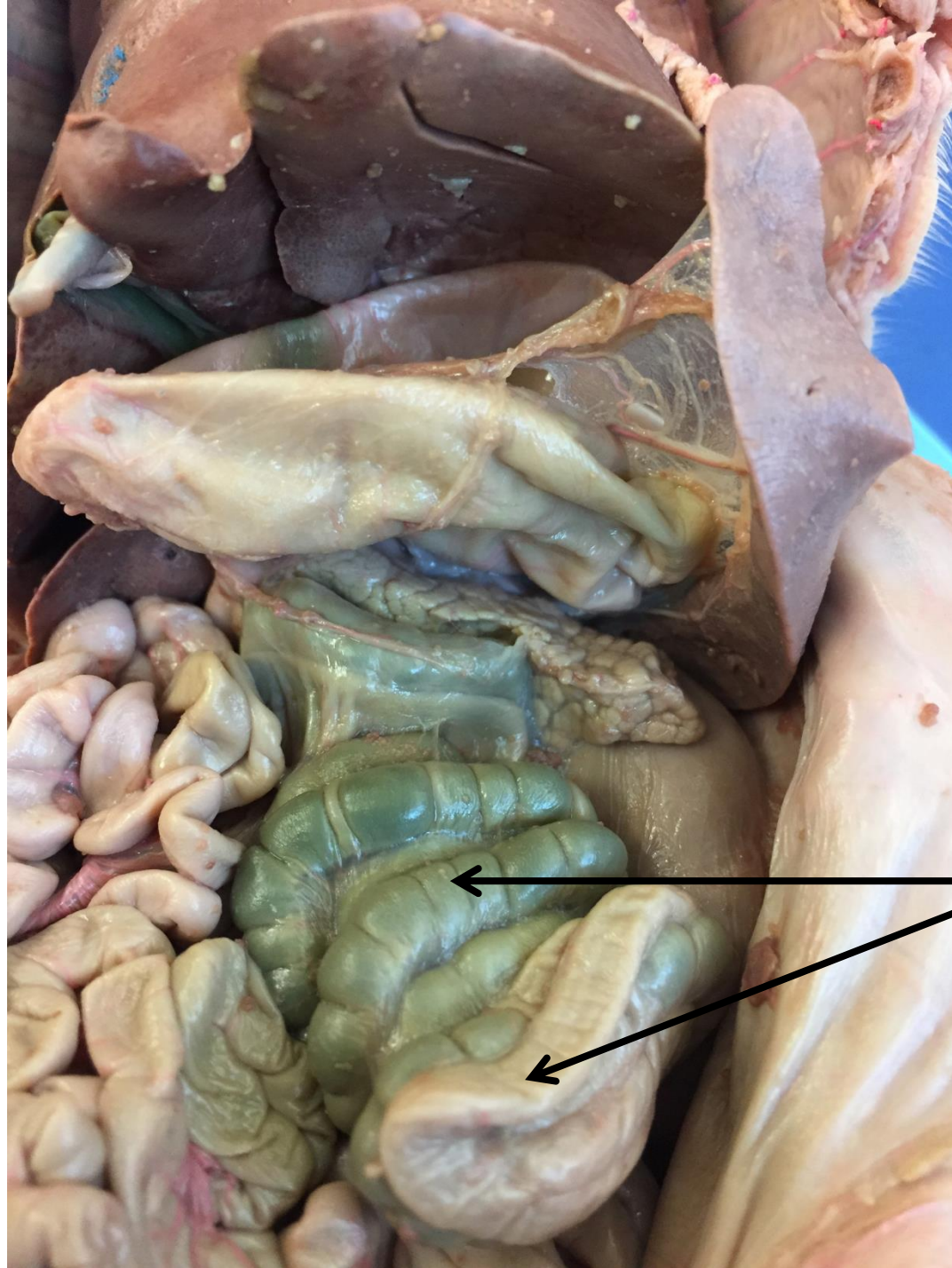
*scroll to the next slide to check your answer

stomach





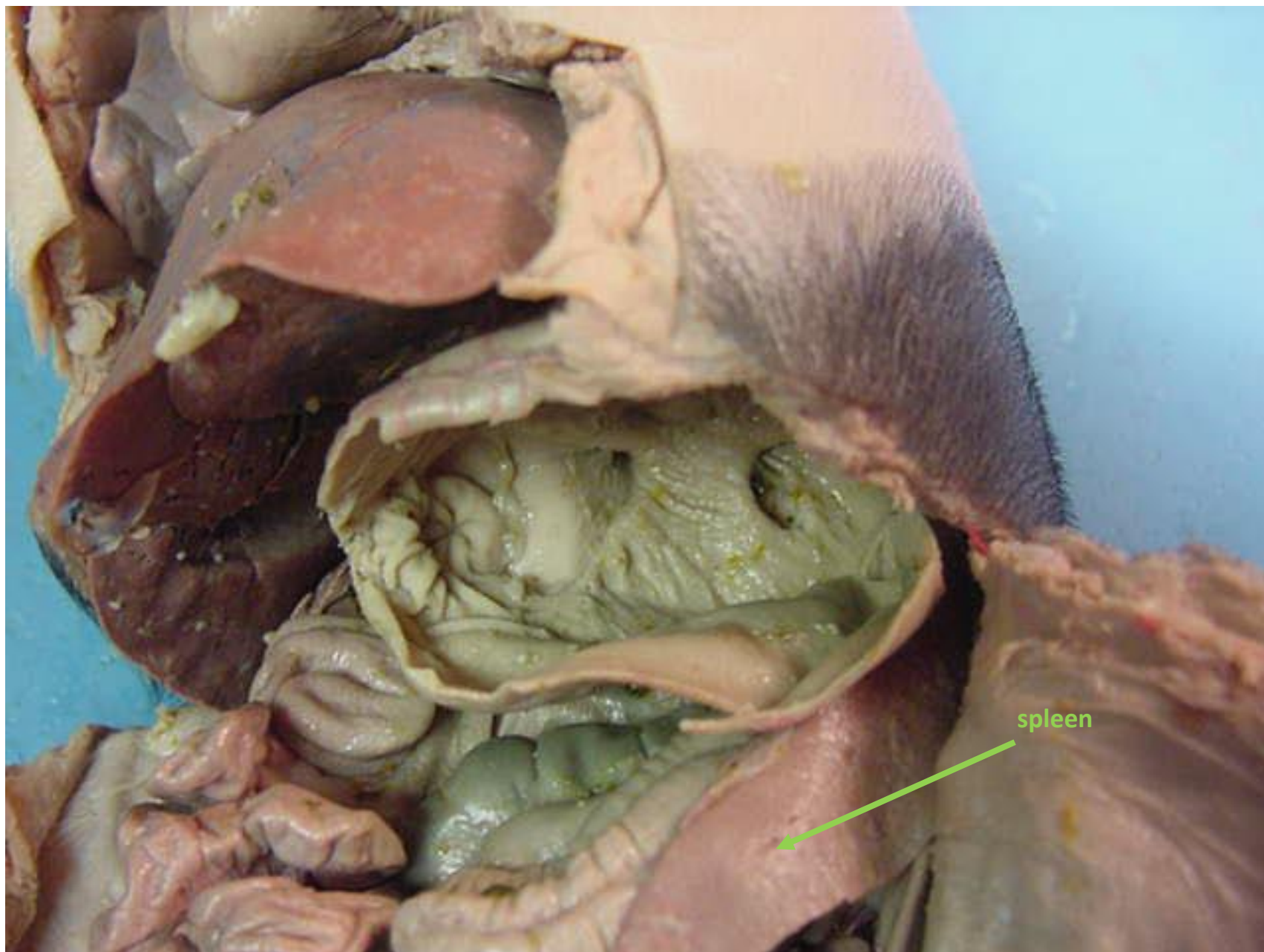
*scroll to the
next slide to
check your
answer

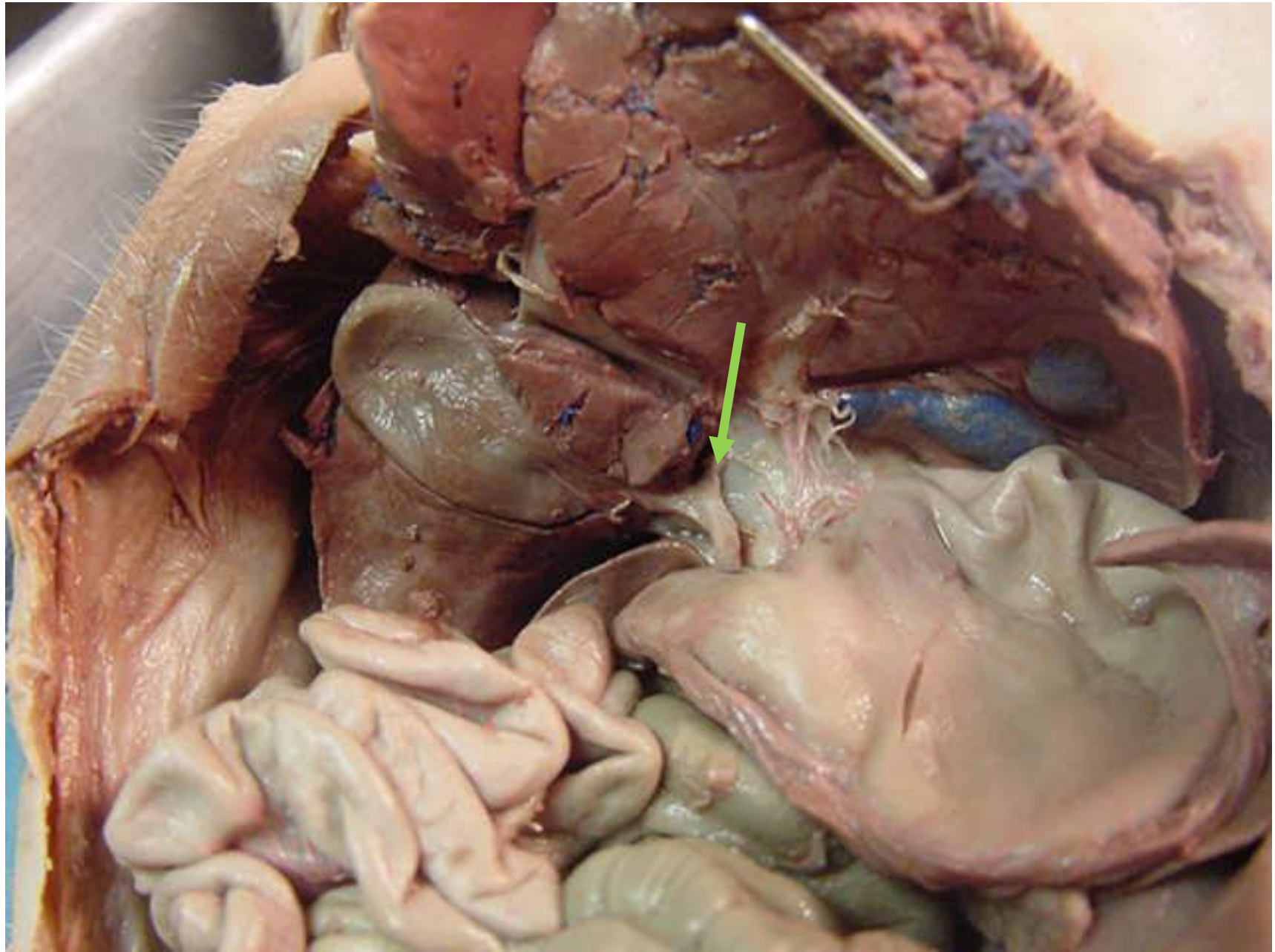


spiral colon

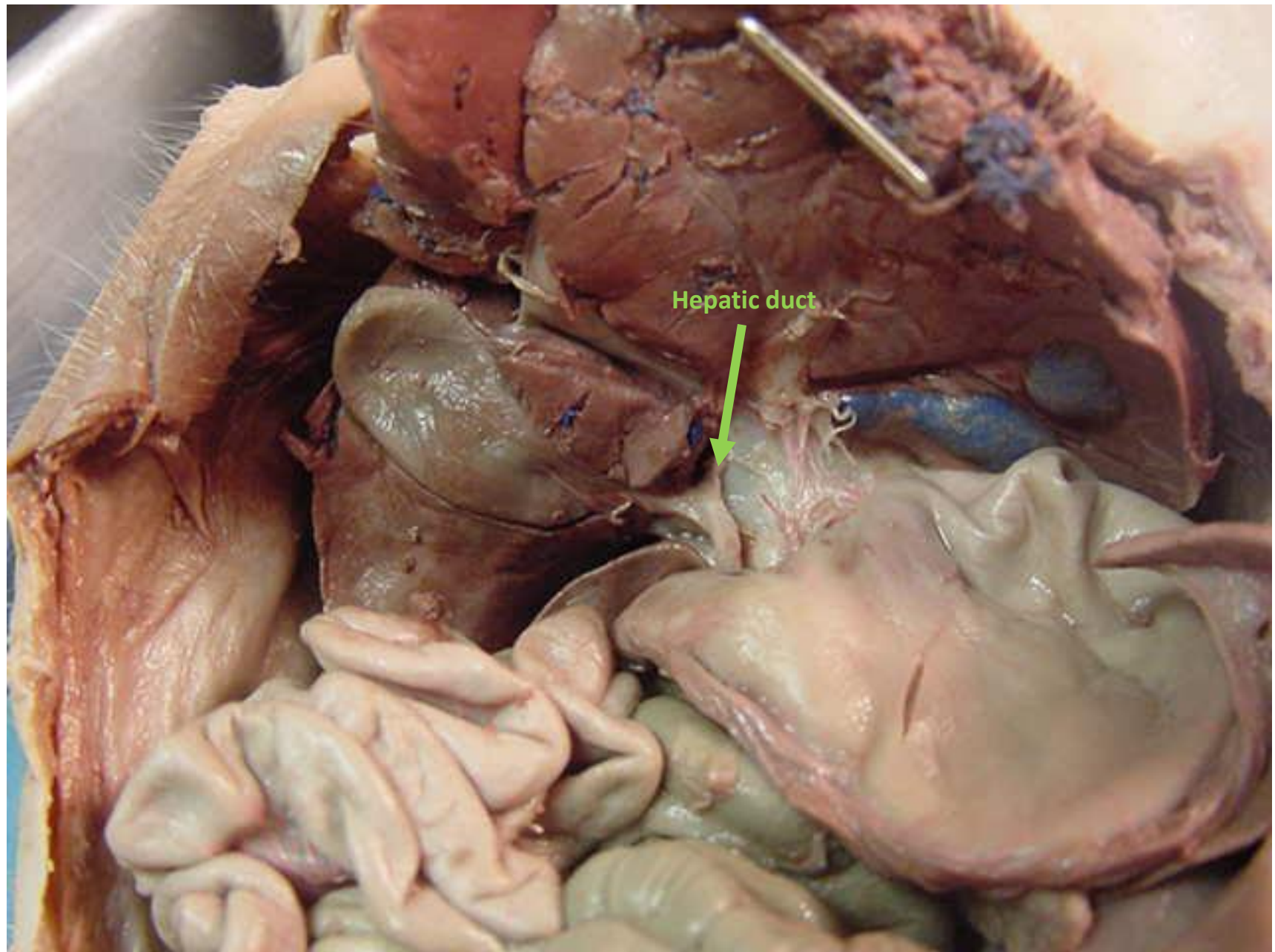


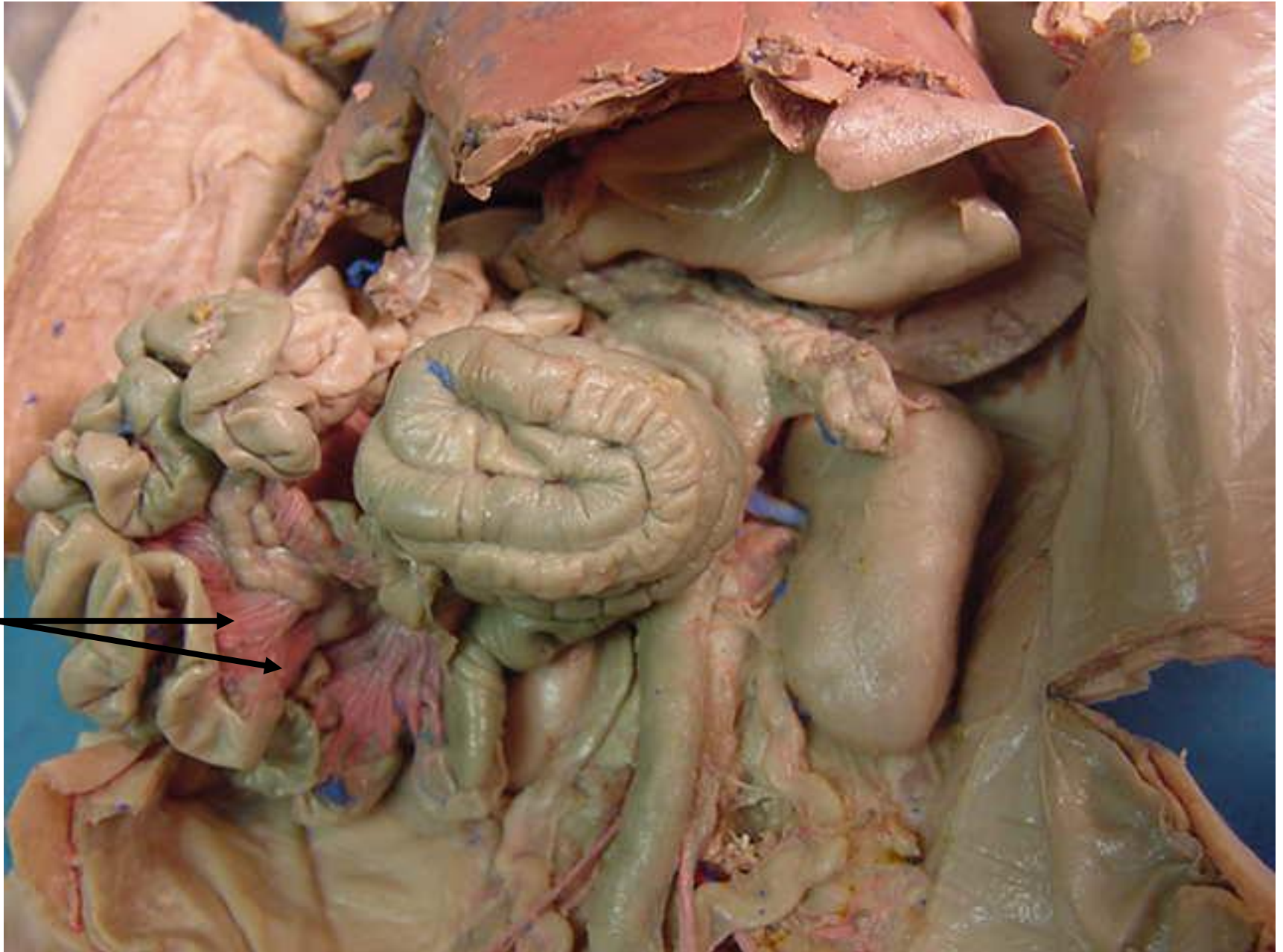
*scroll to the next slide to check your answer



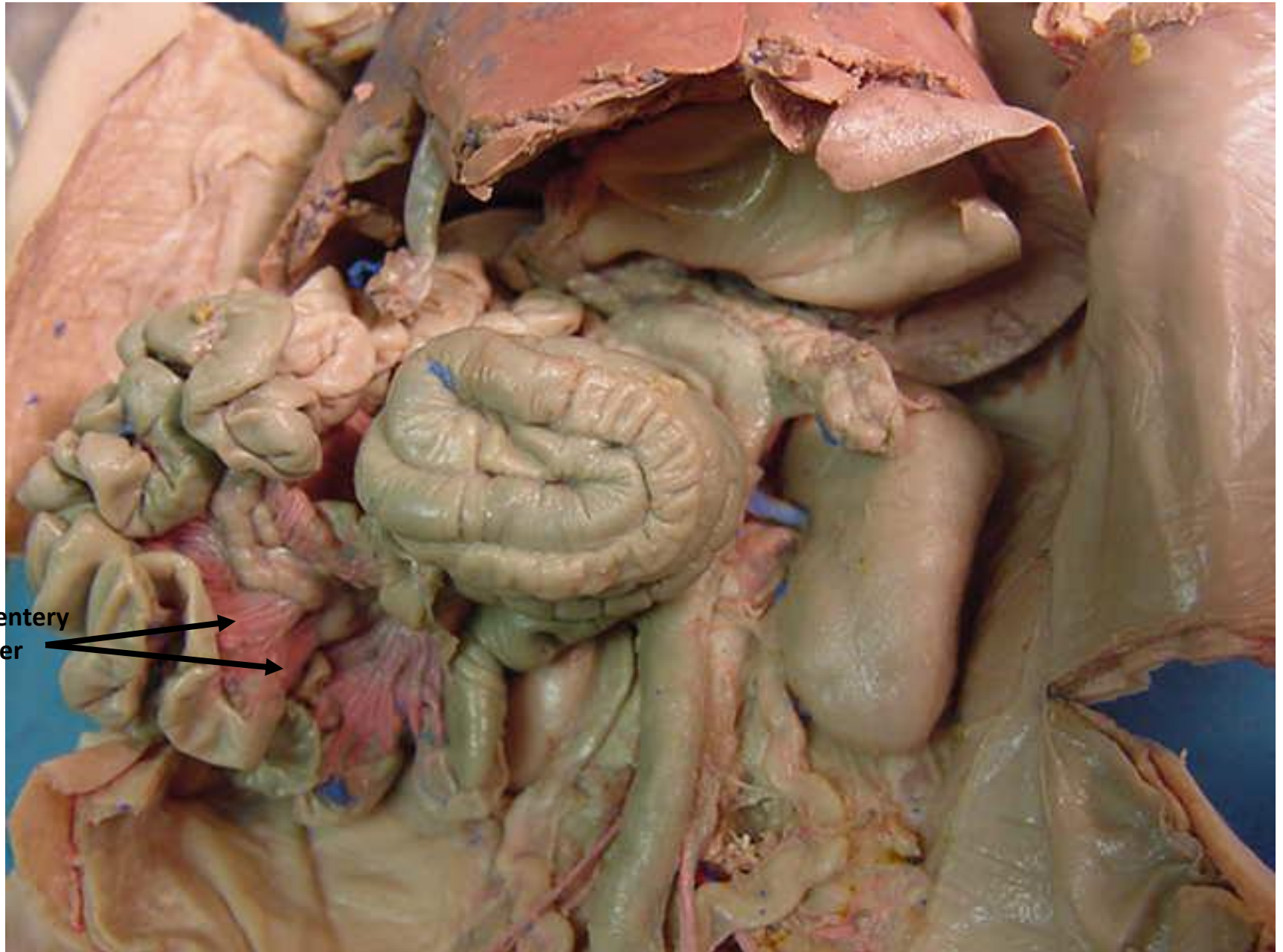


*scroll to the next slide to check your answer

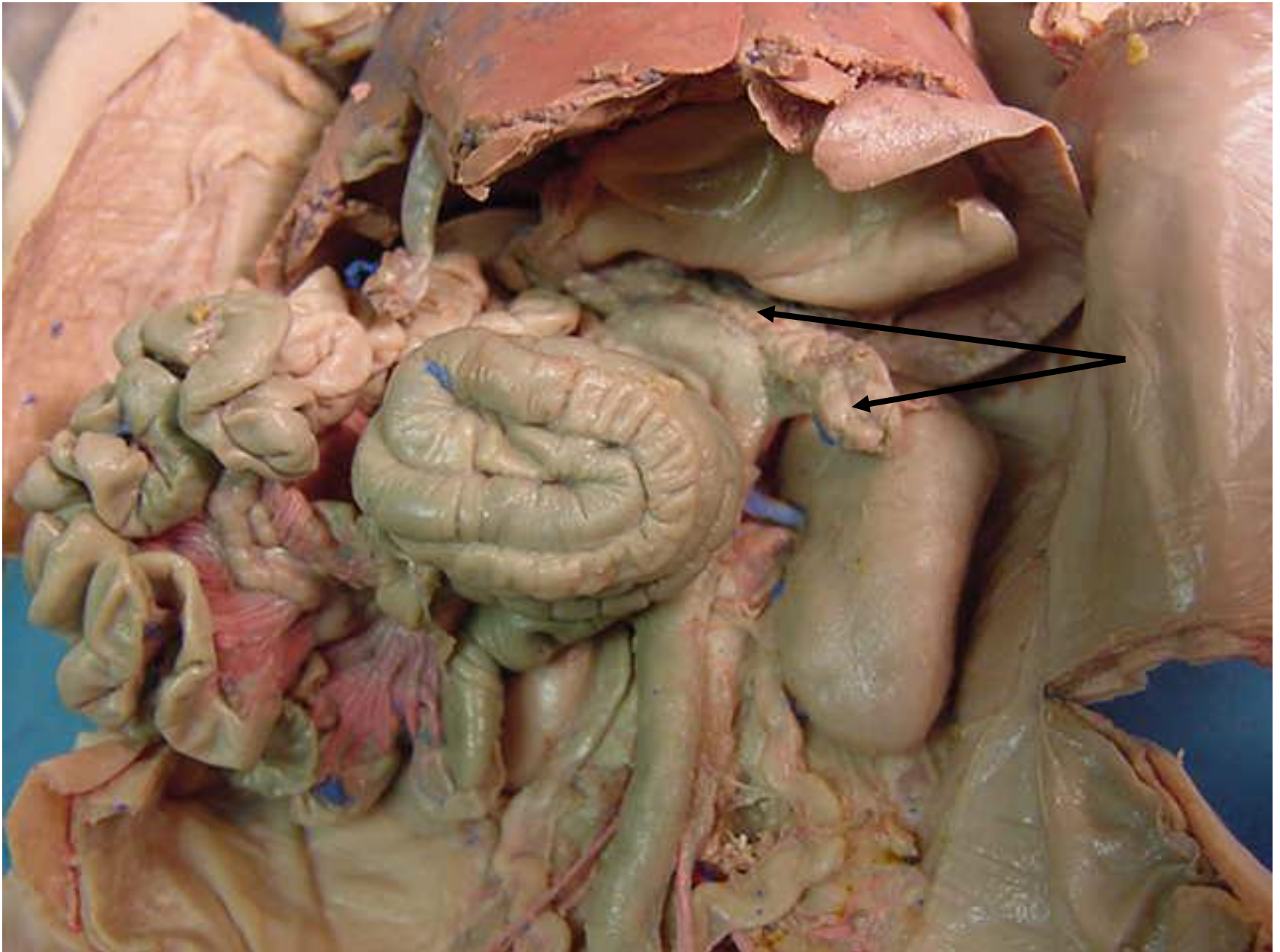




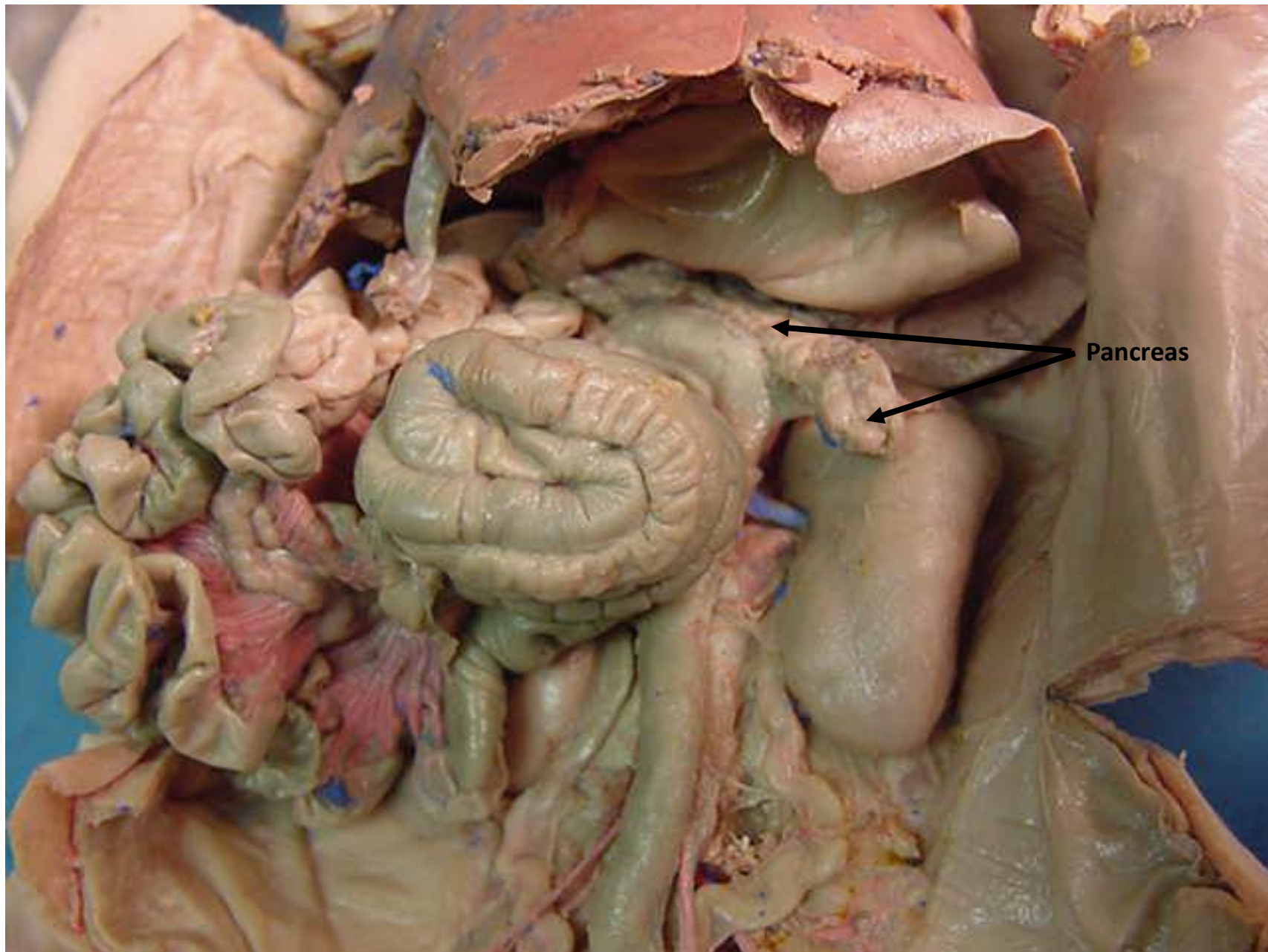
*scroll to the next slide to check your answer



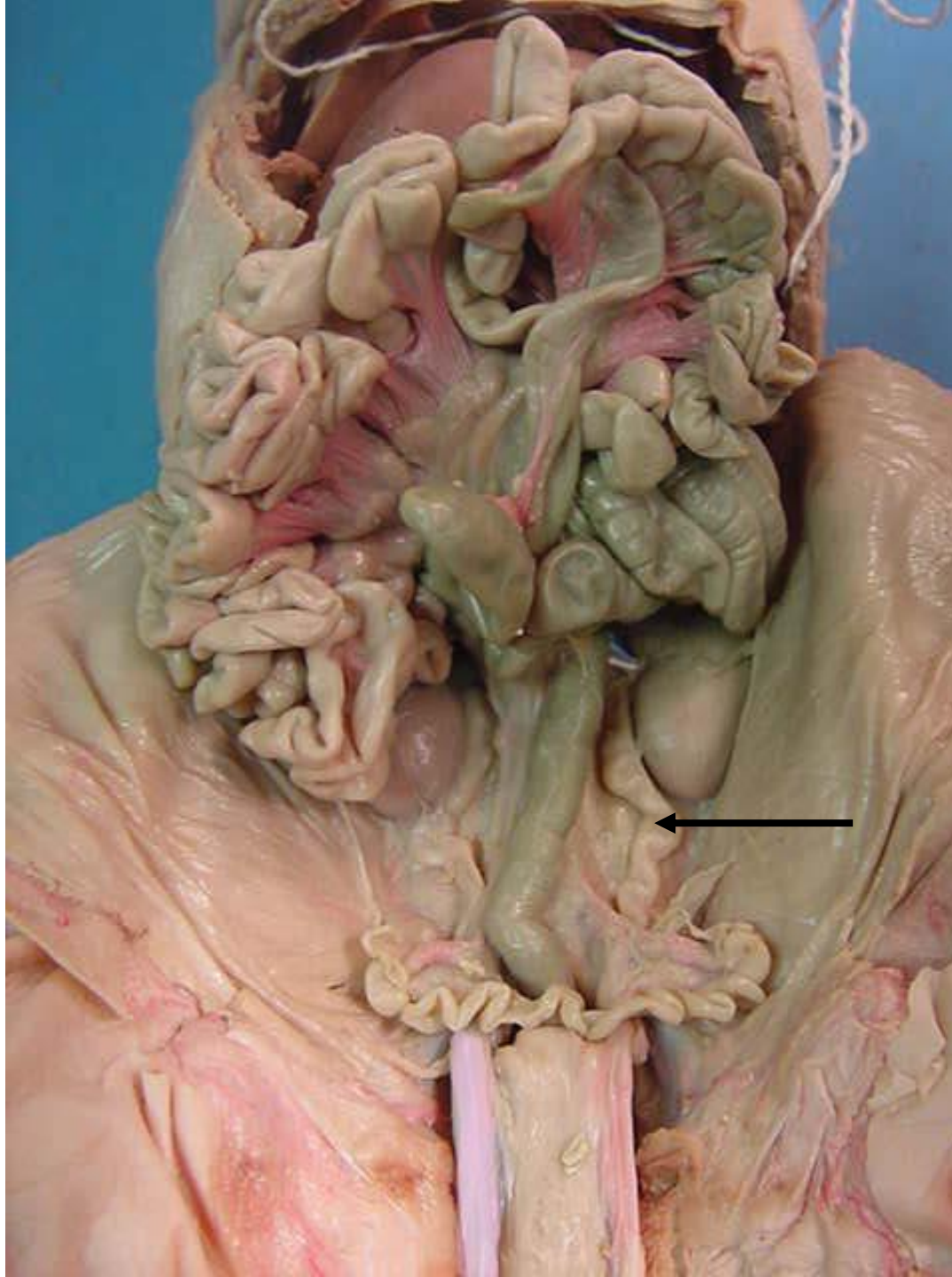
Mesentery
proper



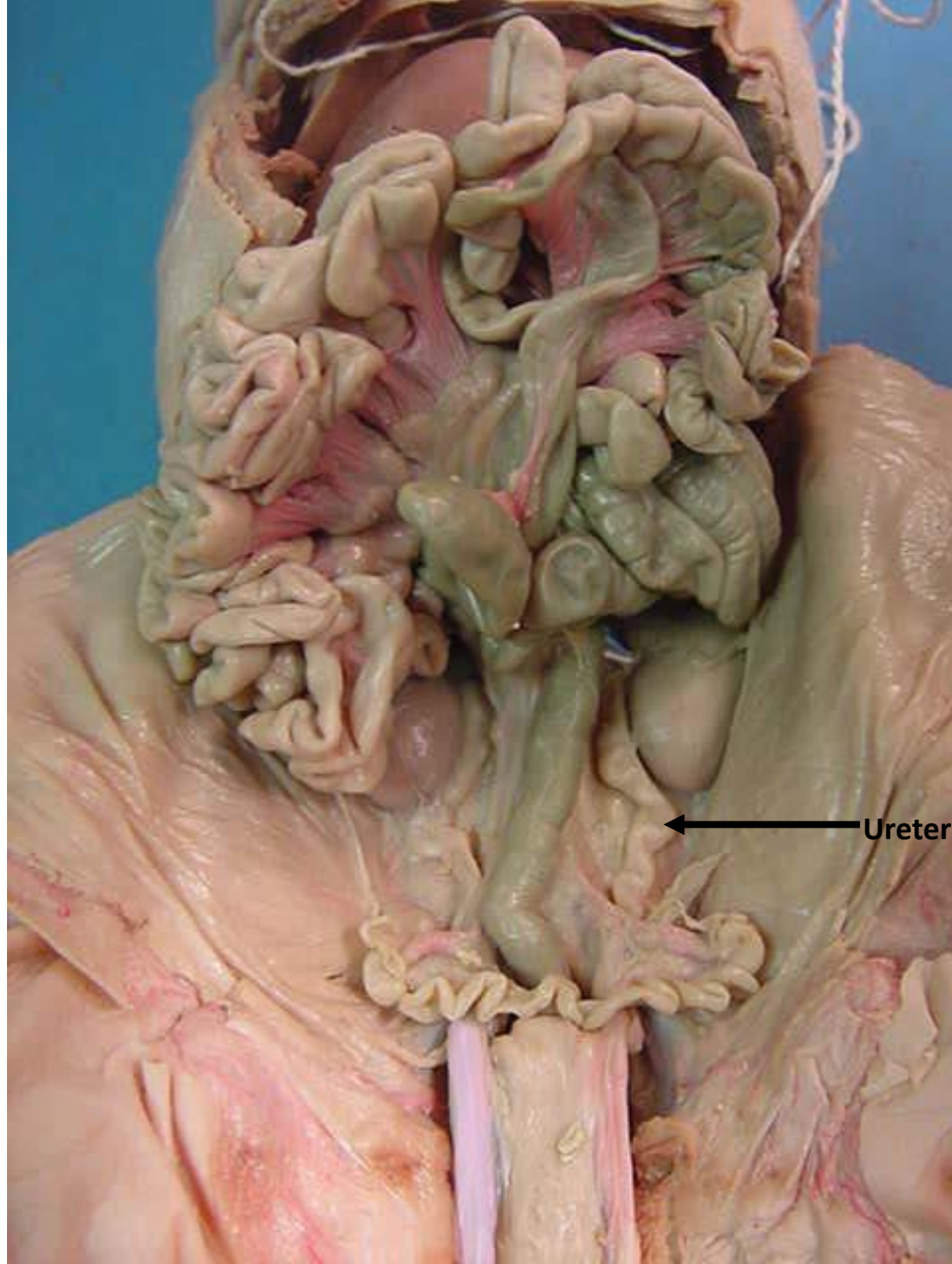
*scroll to the next slide to check your answer



Pancreas



*scroll to the next slide to check your answer



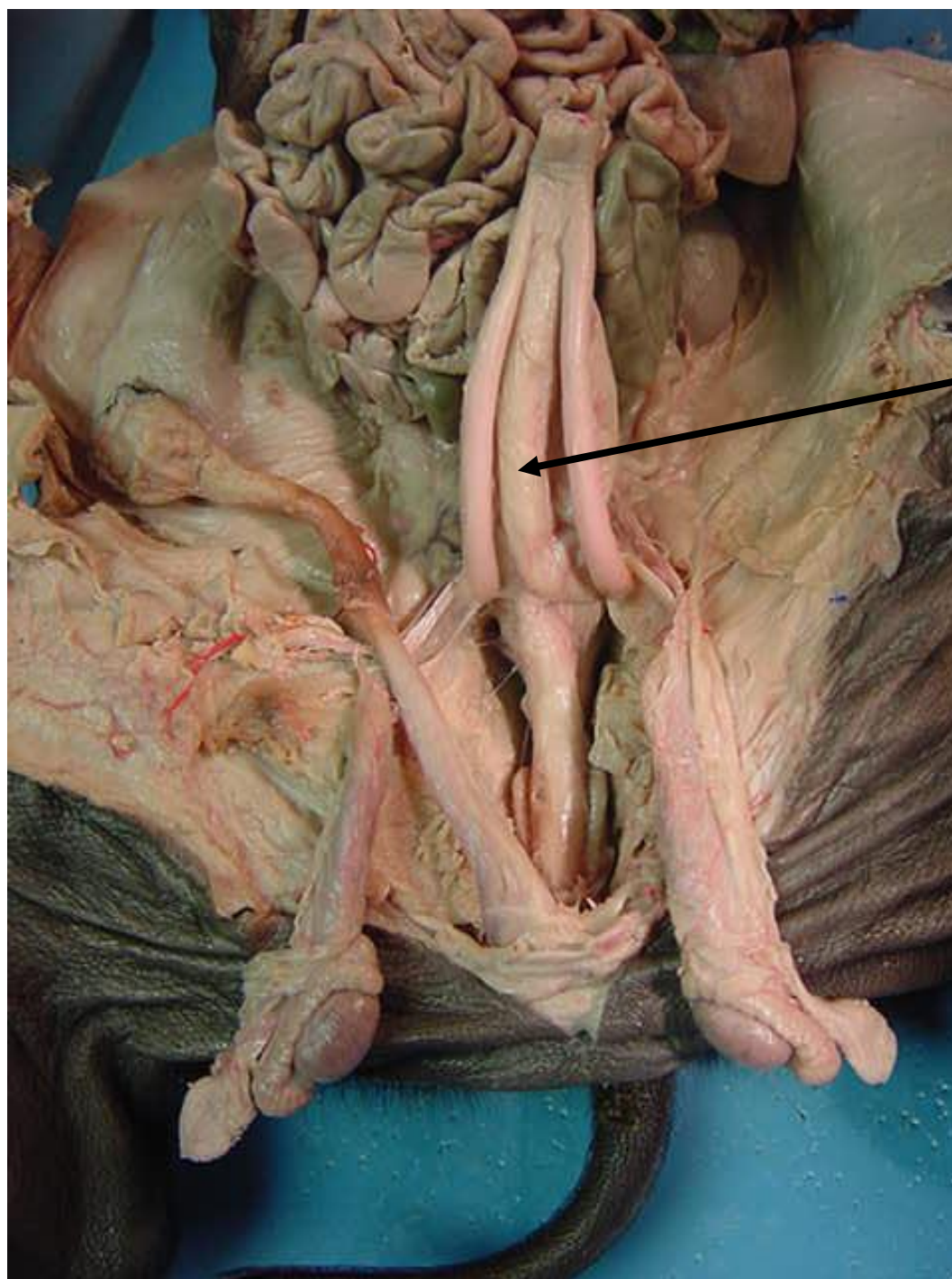
← Ureter



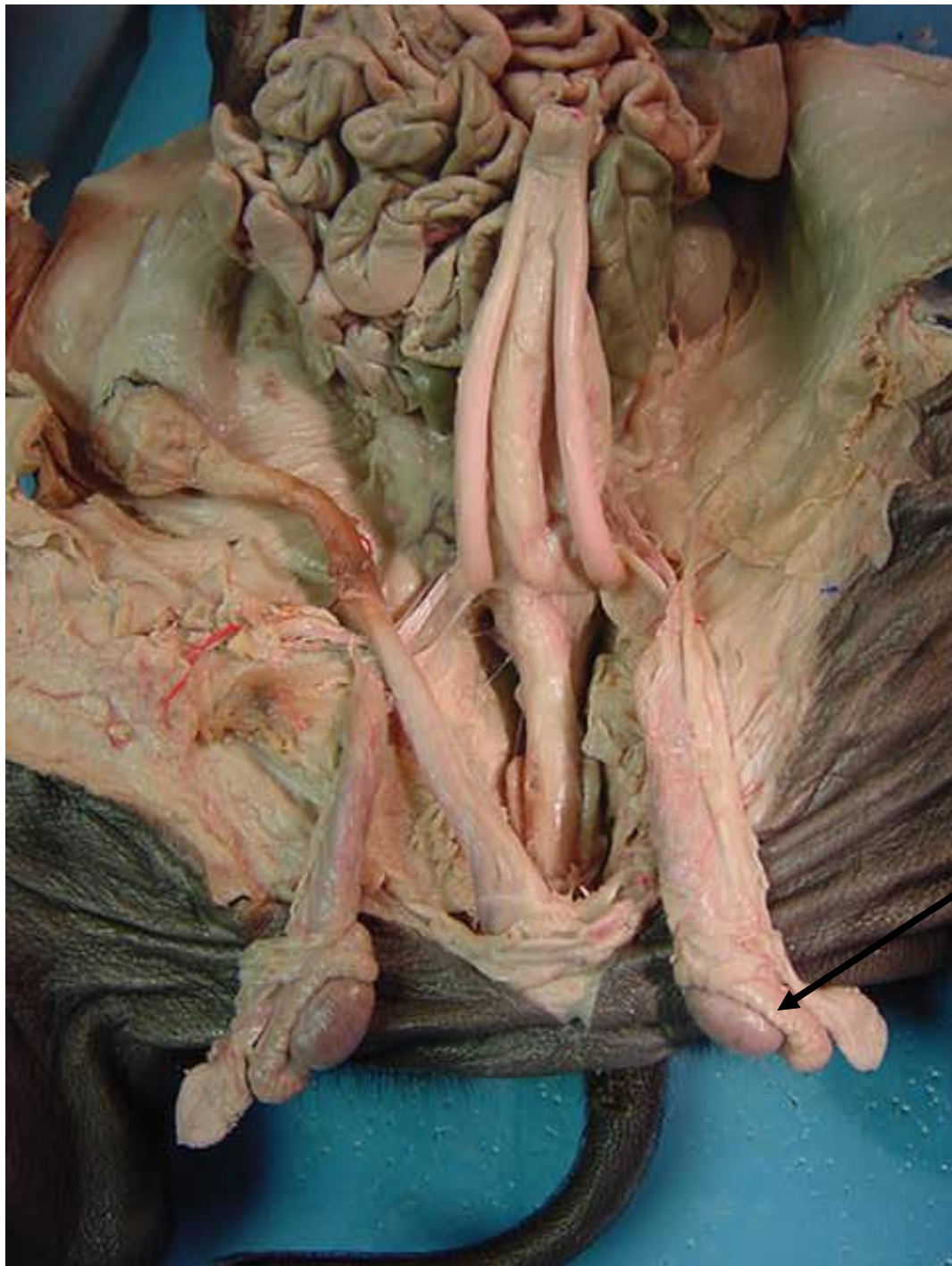
*scroll to the
next slide to
check your
answer



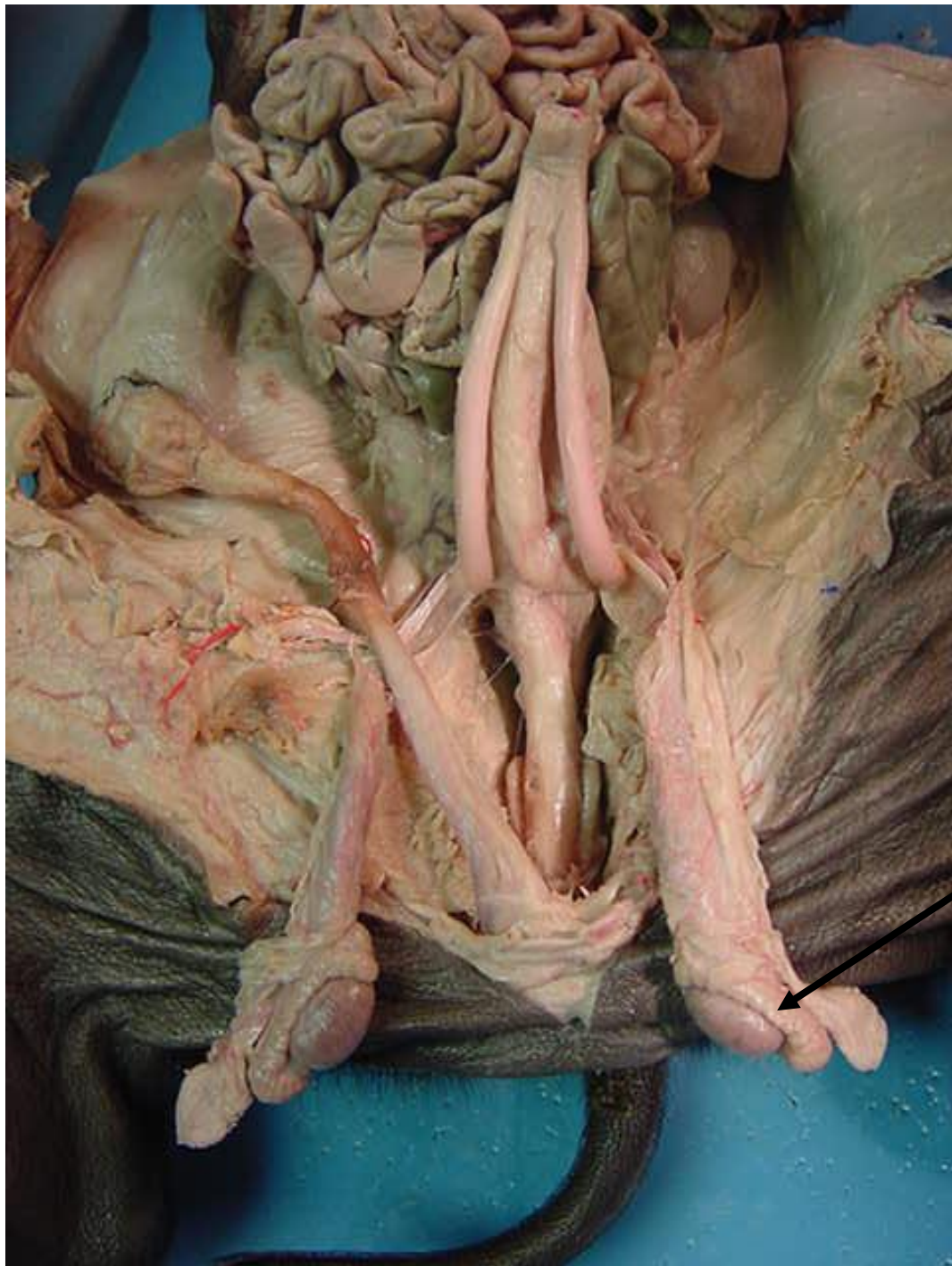
Umbilical artery



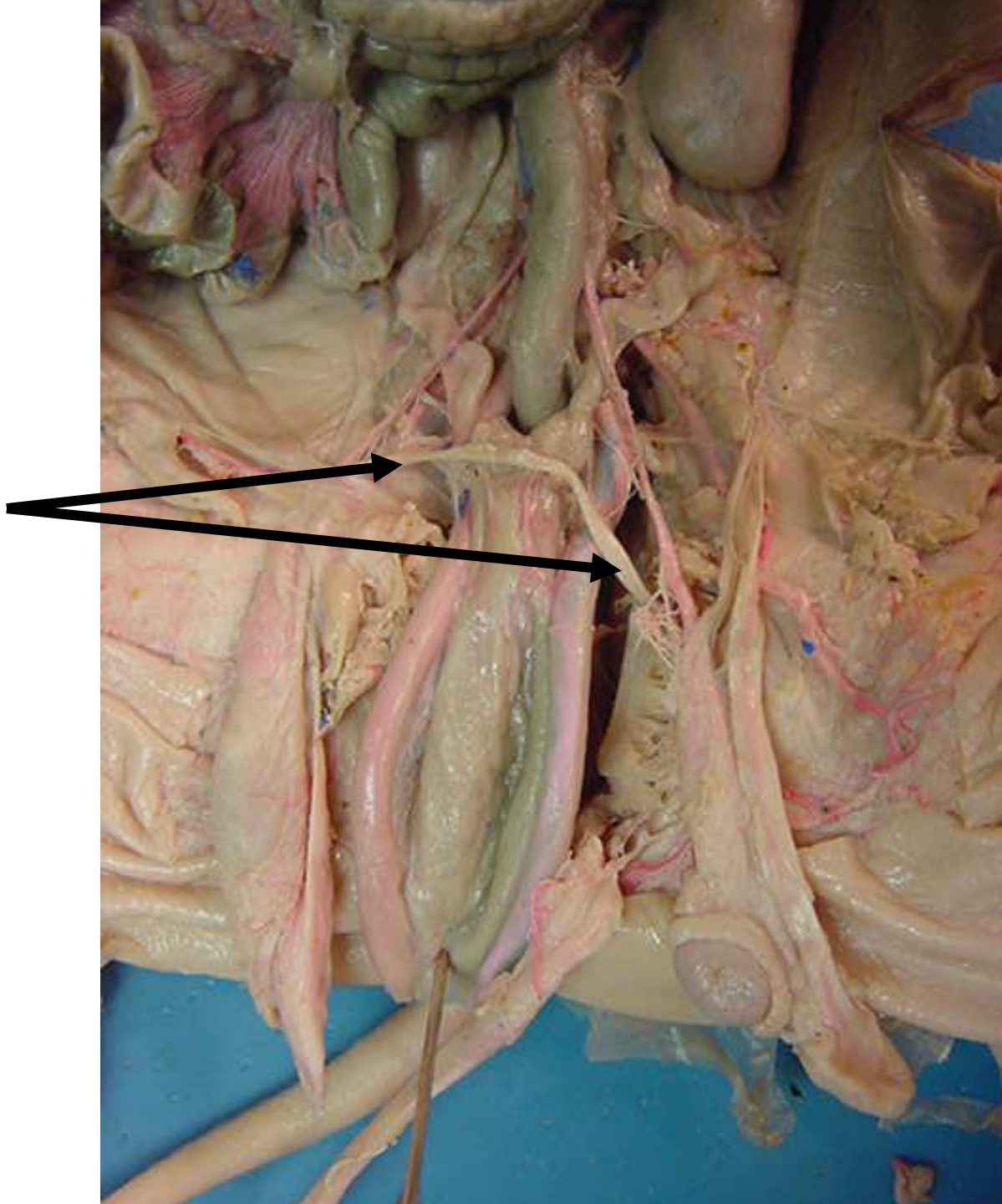
Urinary bladder



*scroll to the next slide
to check your answer

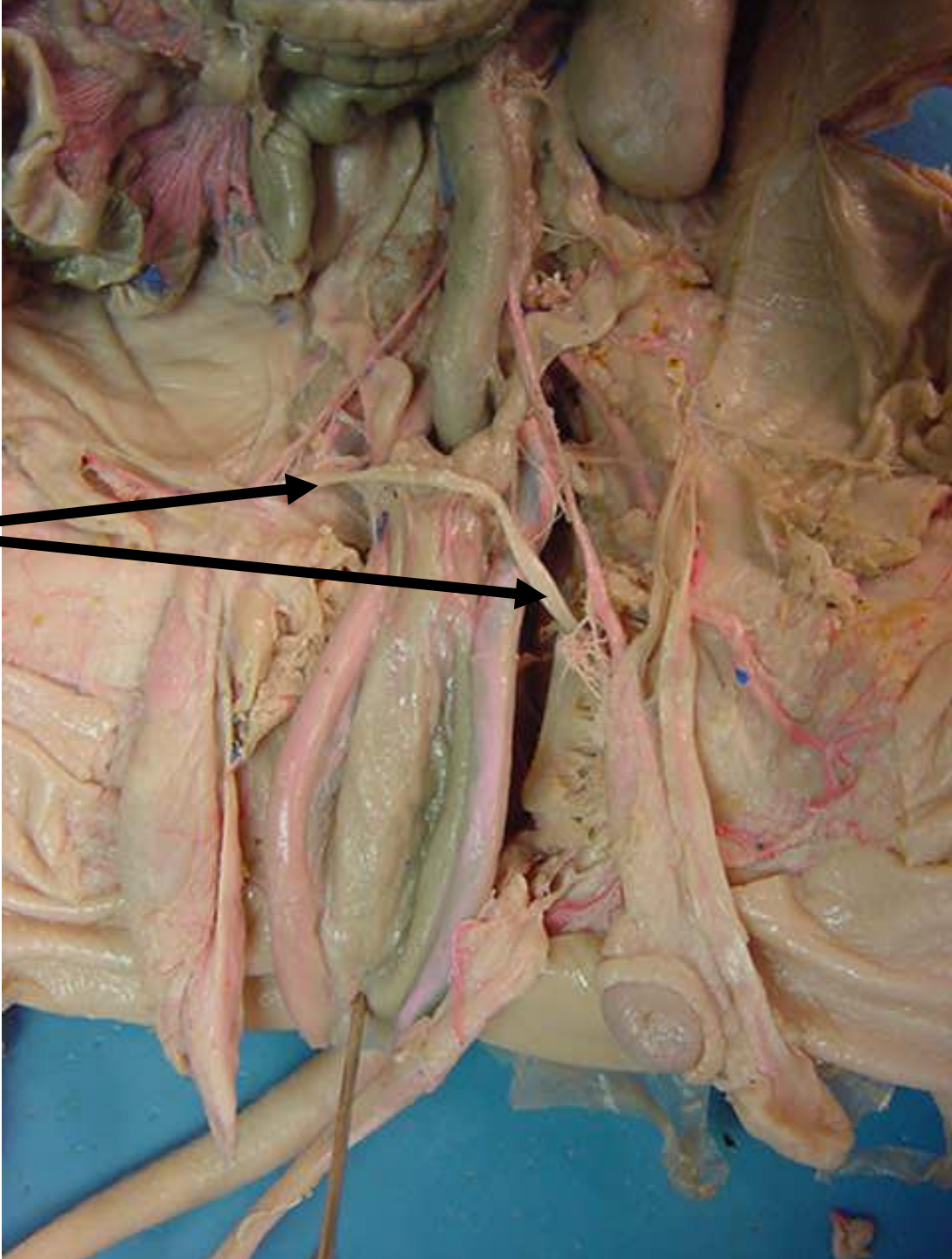


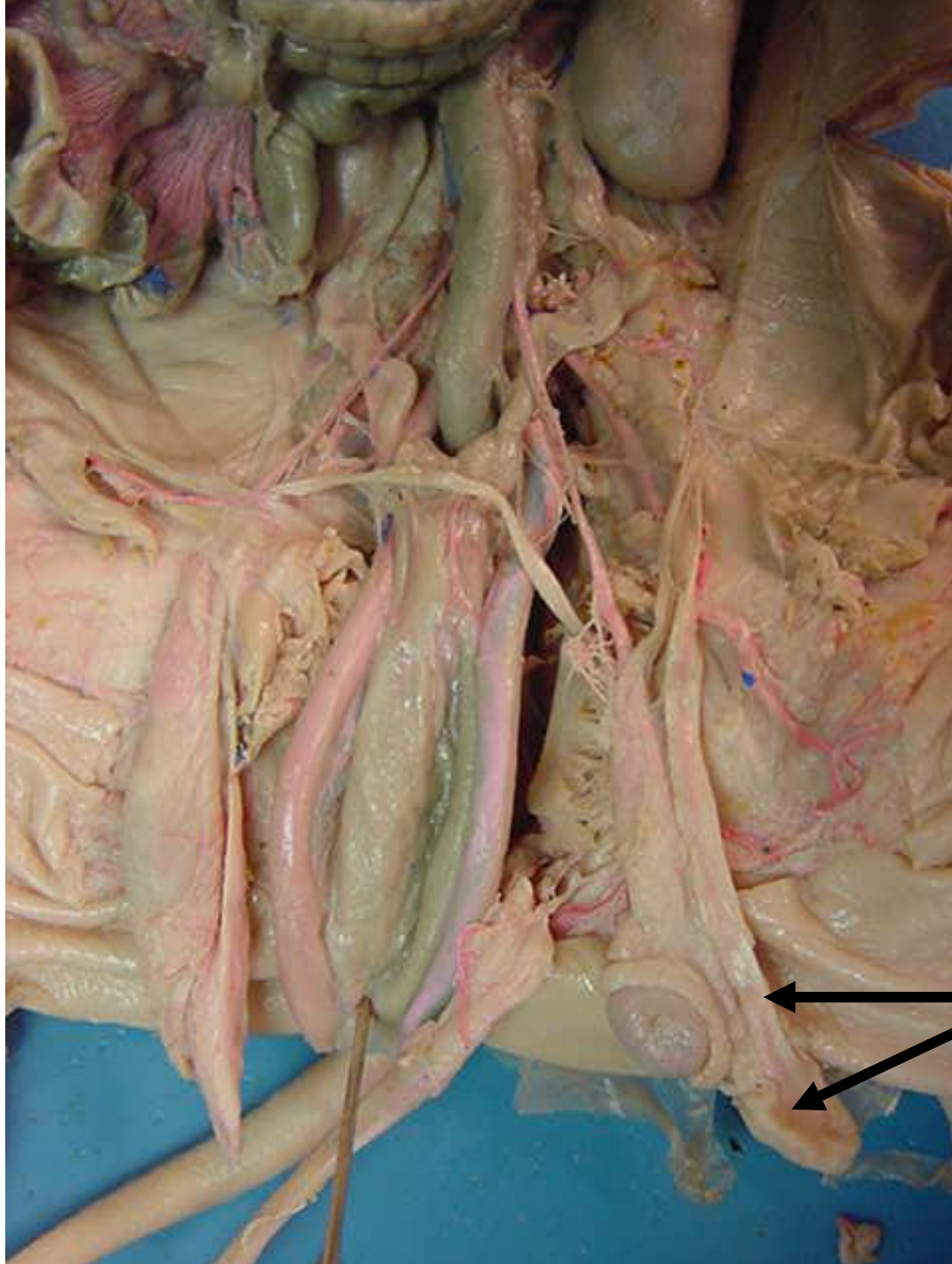
Epididymis



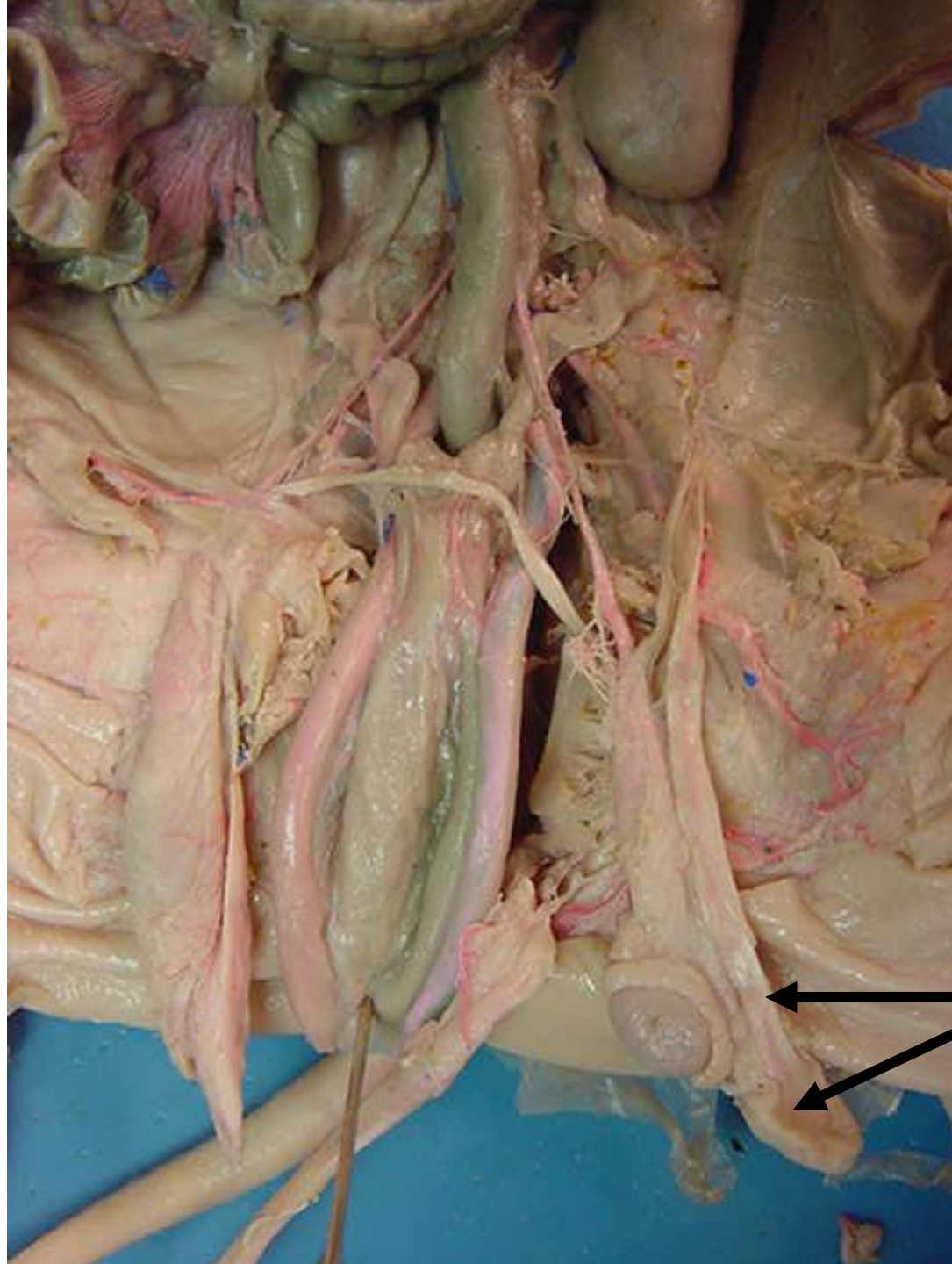
*scroll to the next slide to check your answer

Vas (ductus) deferens





*scroll to the
next slide to
check your
answer



**Processus
vaginallis**



*scroll to the next slide
to check your answer

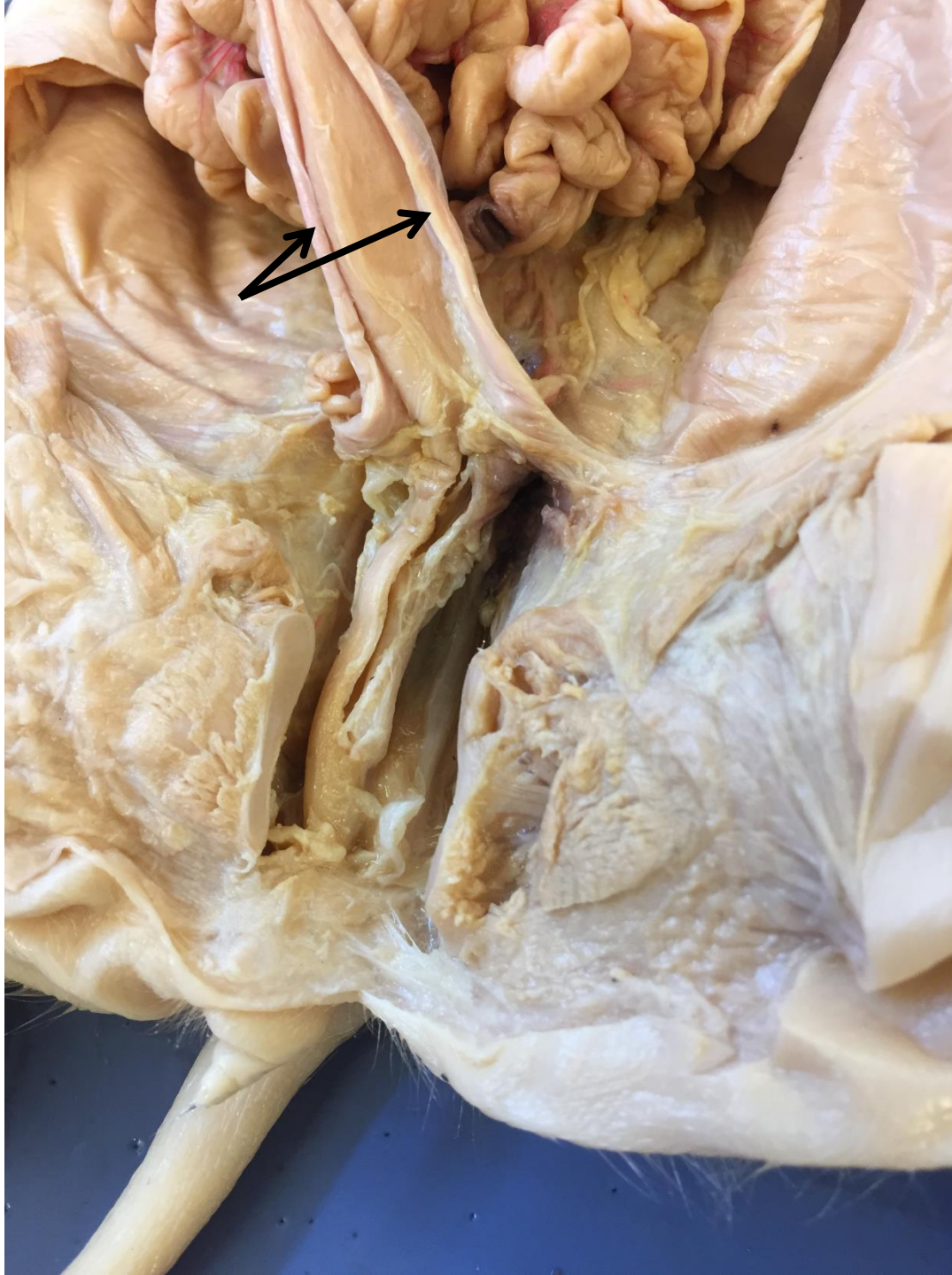




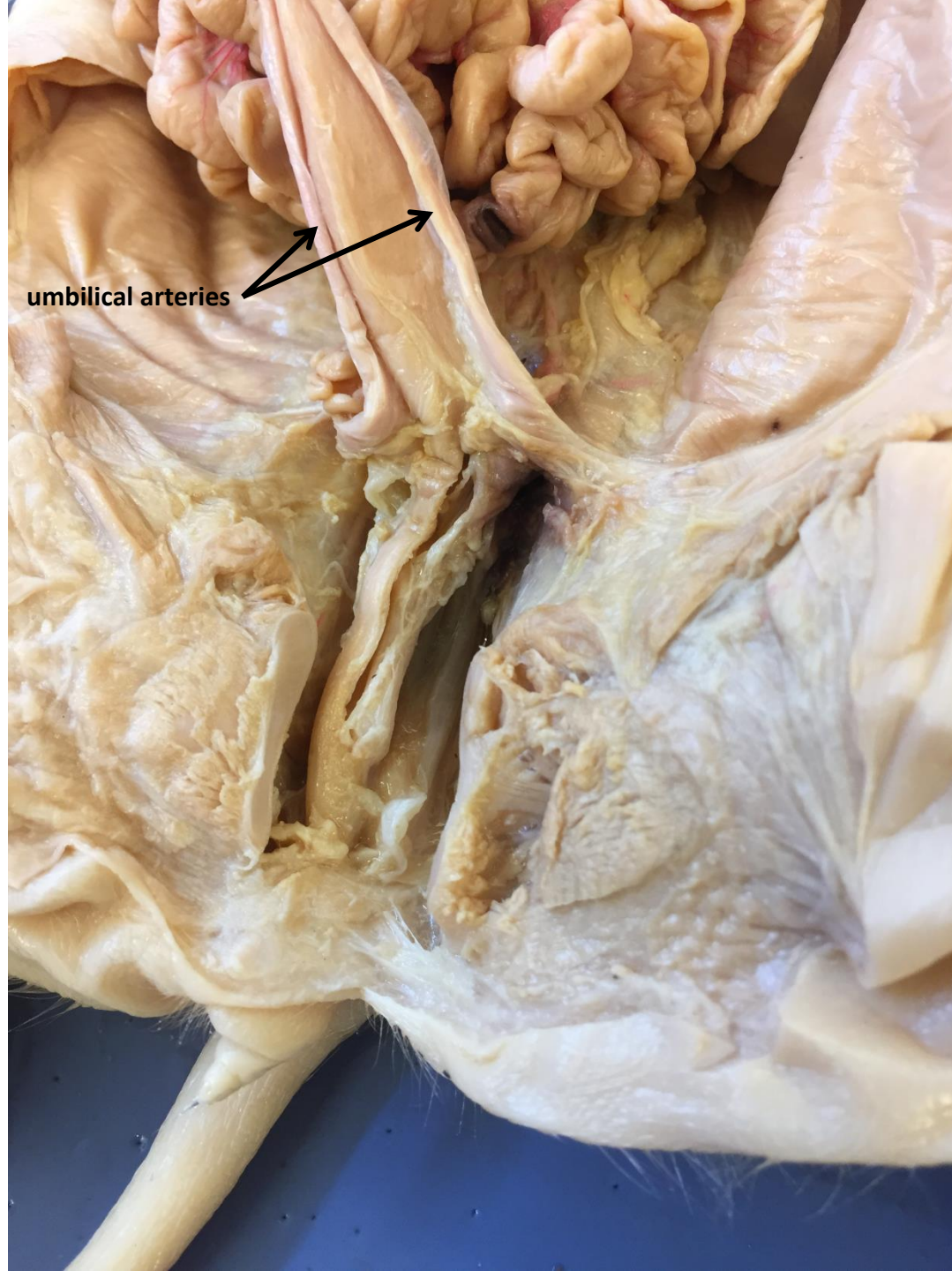
*scroll to the next slide
to check your answer



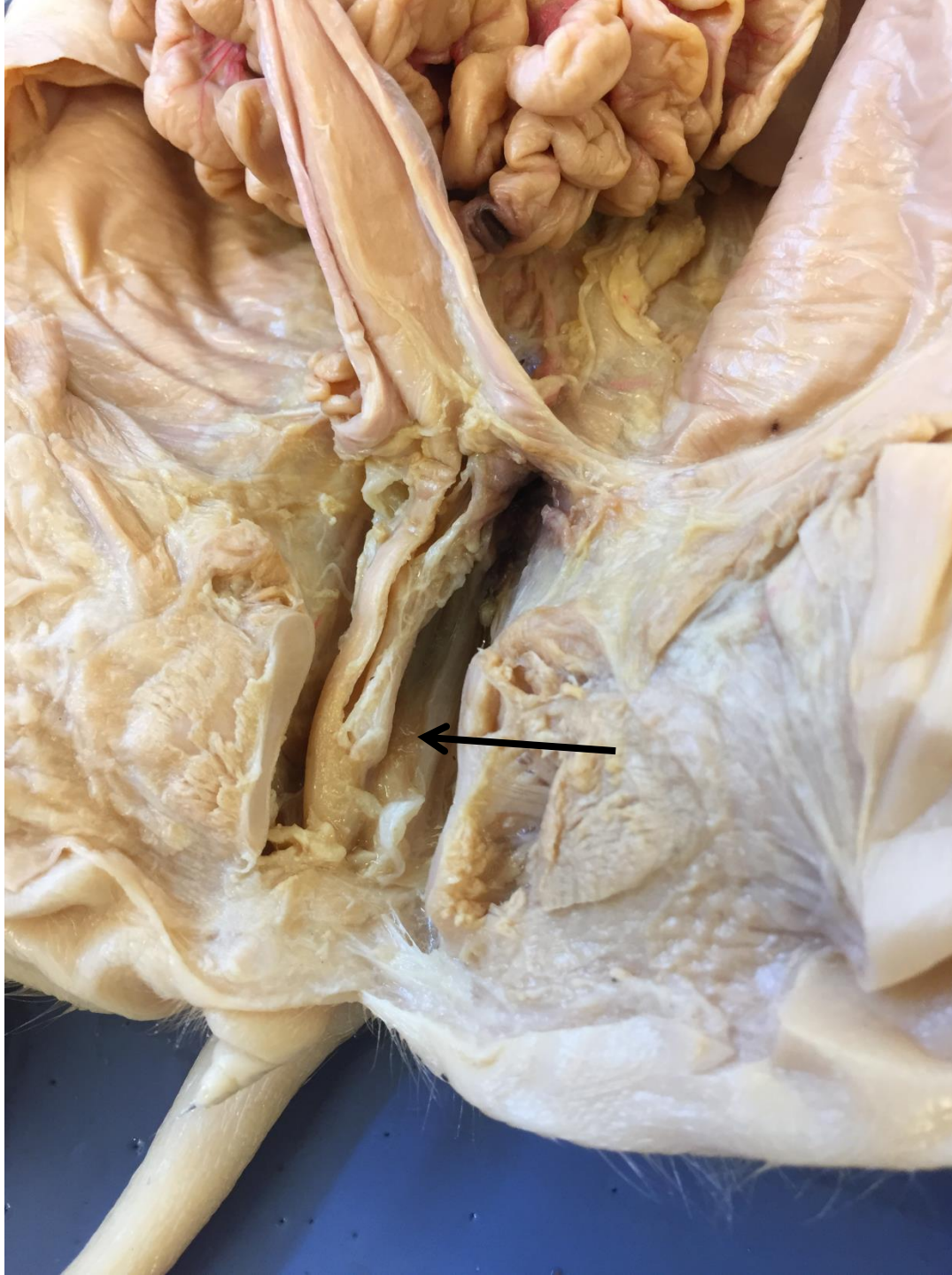
uterine horn



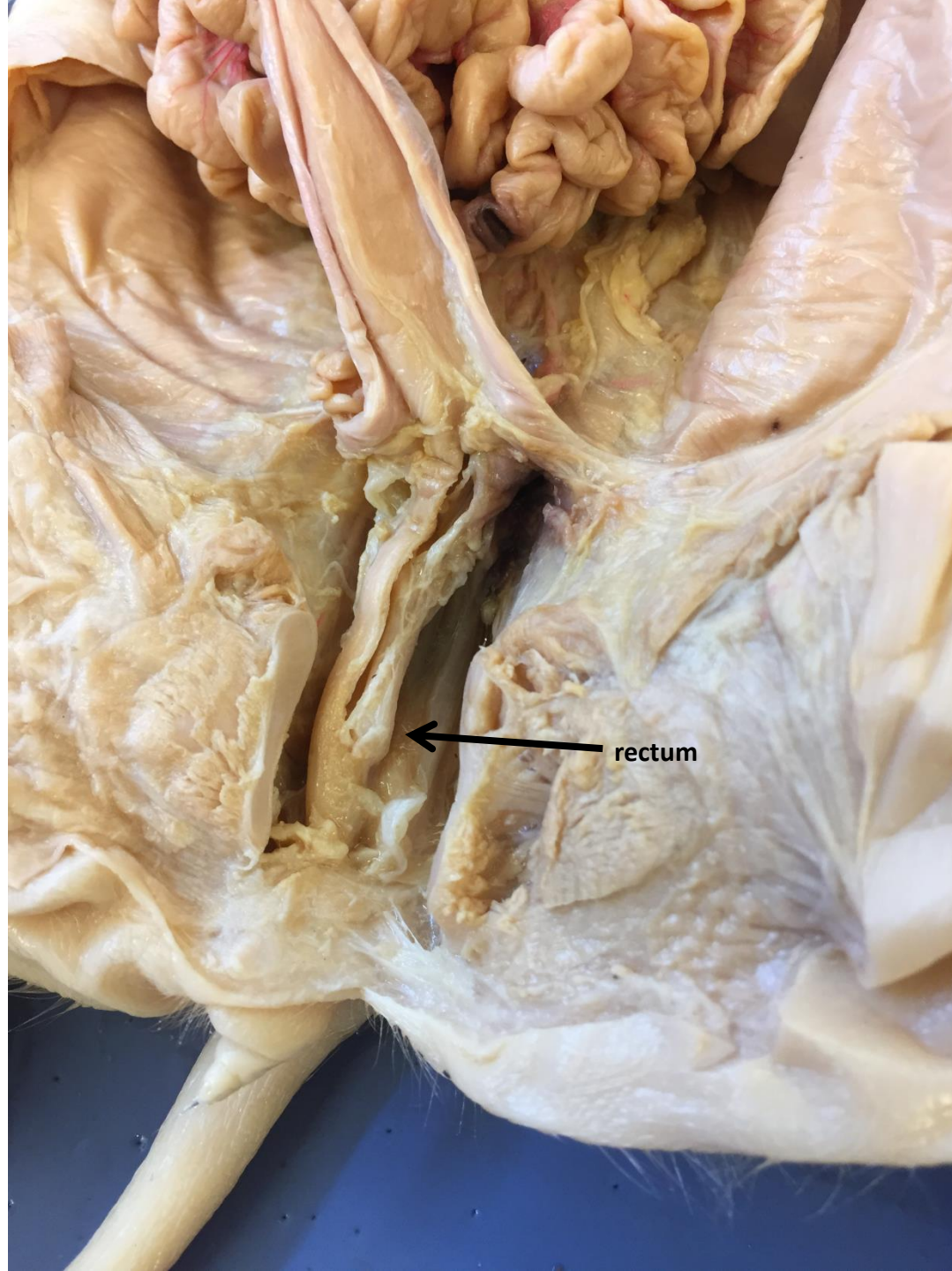
*scroll to the
next slide to
check your
answer



umbilical arteries



*scroll to the next slide to check your answer



rectum