

# **Heart Models**

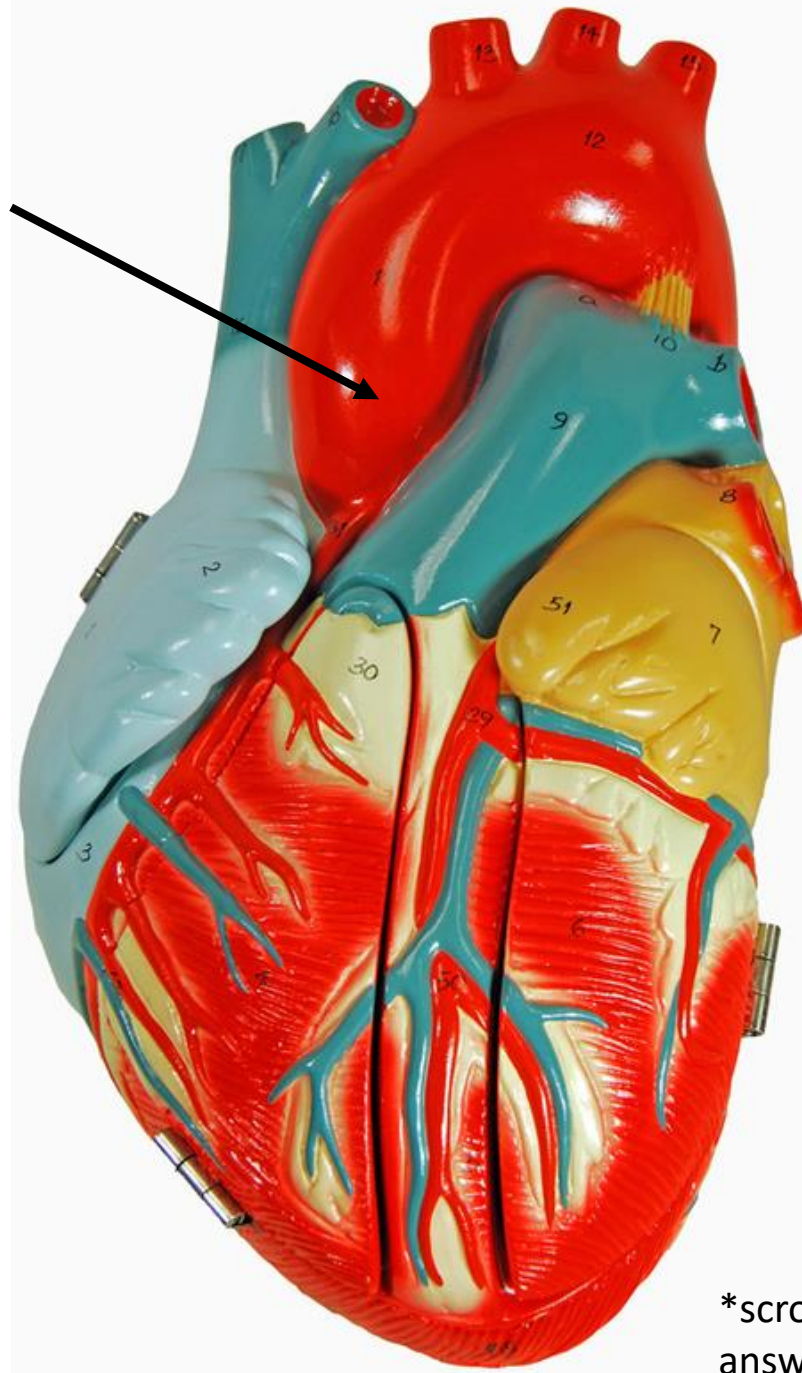
## **Practice Exam #1**

Name the following structures indicated by the arrows.

Scroll to the next slide to see the answer.

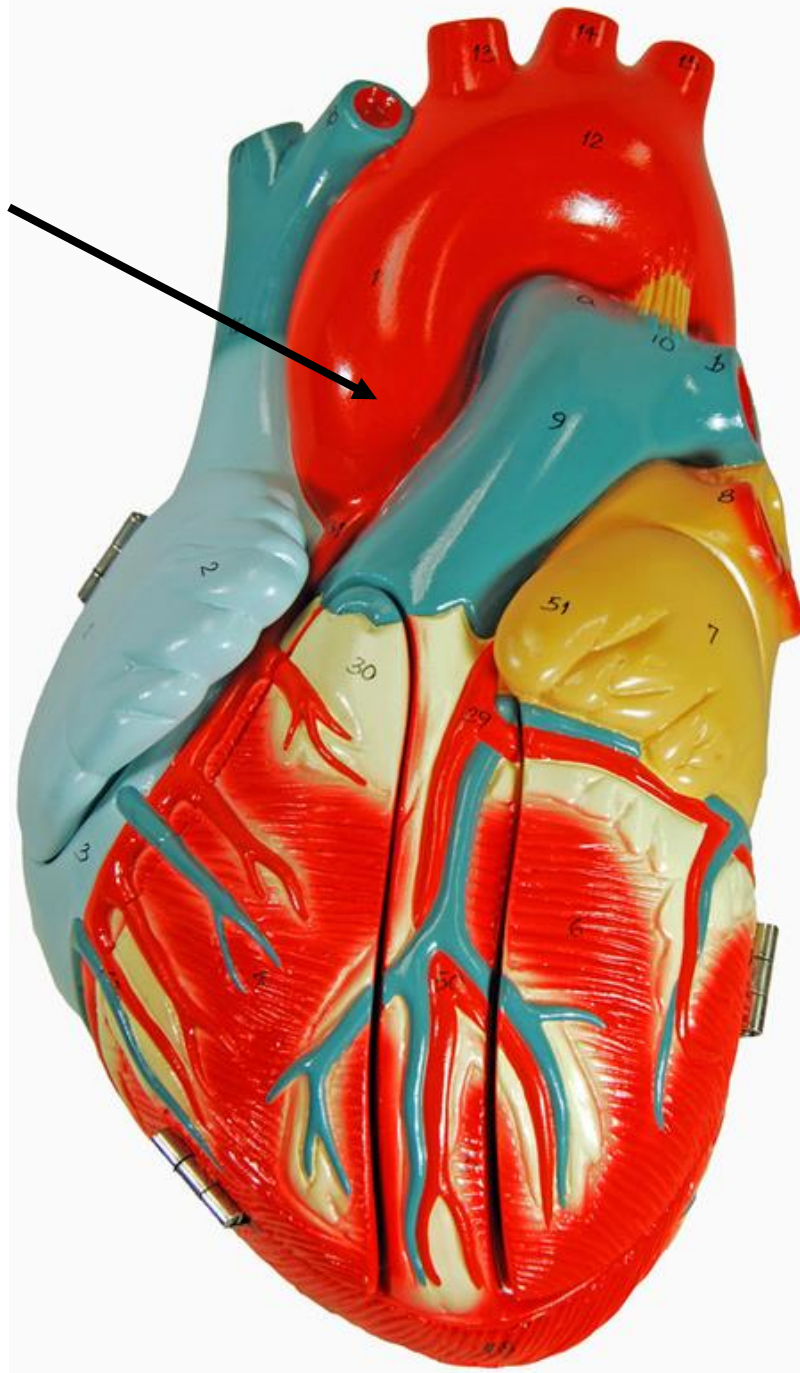
\*For best results on these practice exams, write your answers on paper before scrolling to see the correct answer. Try to answer within a minute (remember your lab exams will be timed) and make sure to check your spelling!

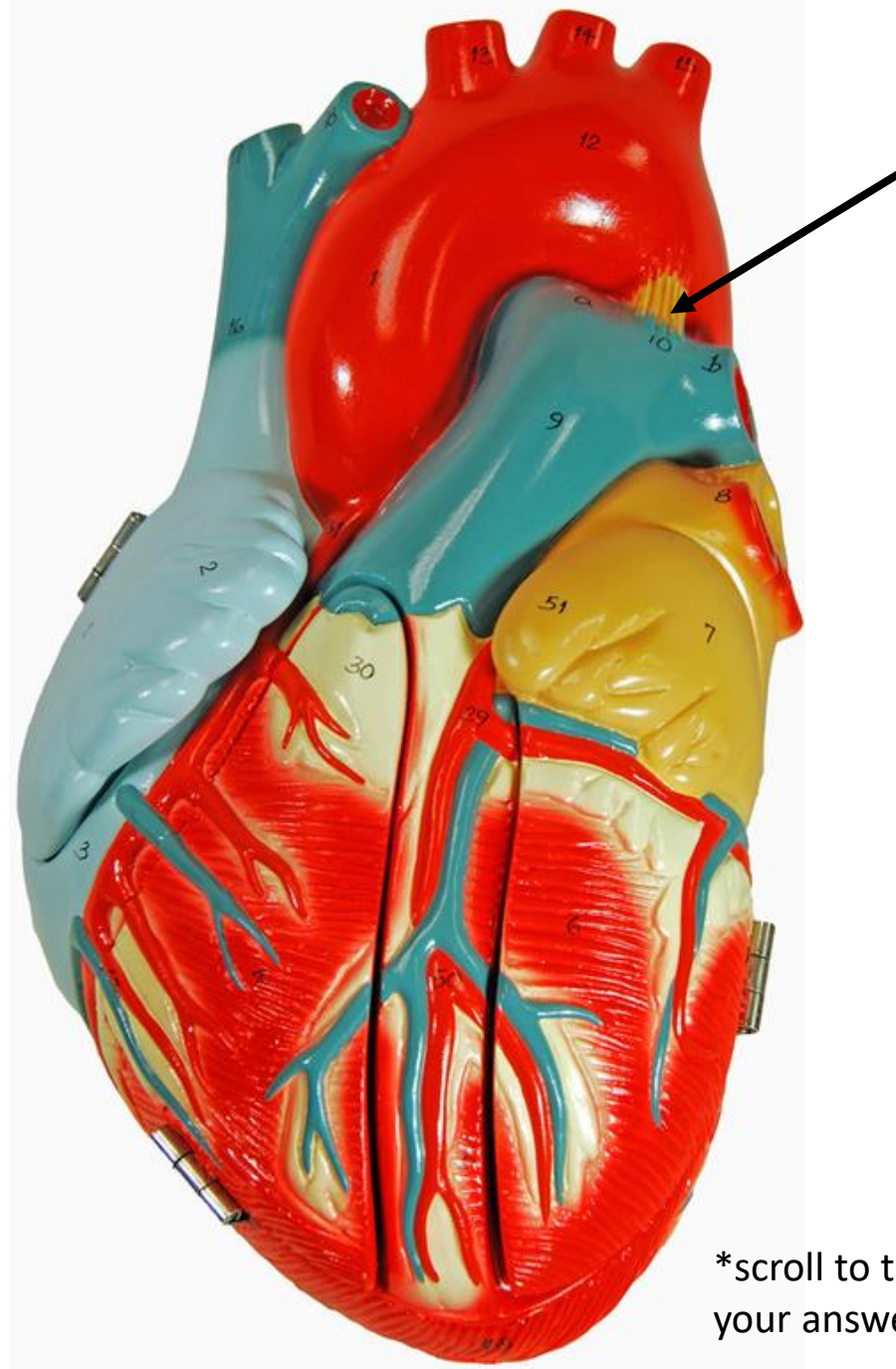
\*note: not every structure you are required to know will be on this practice exercise so make sure you review the checklist of structures (p. 194 in your lab manual) when preparing for your lab exam



\*scroll to the next slide to check your answer

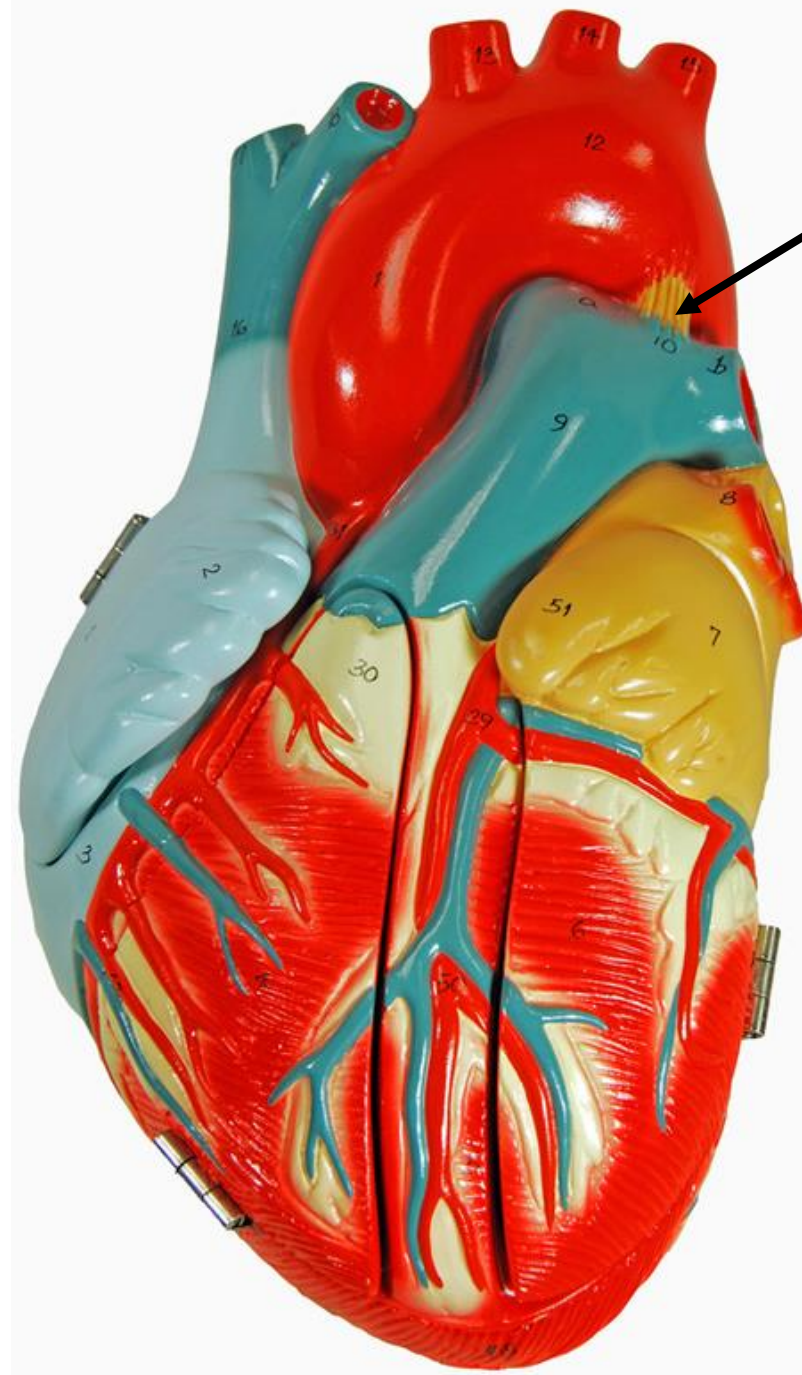
Ascending aorta



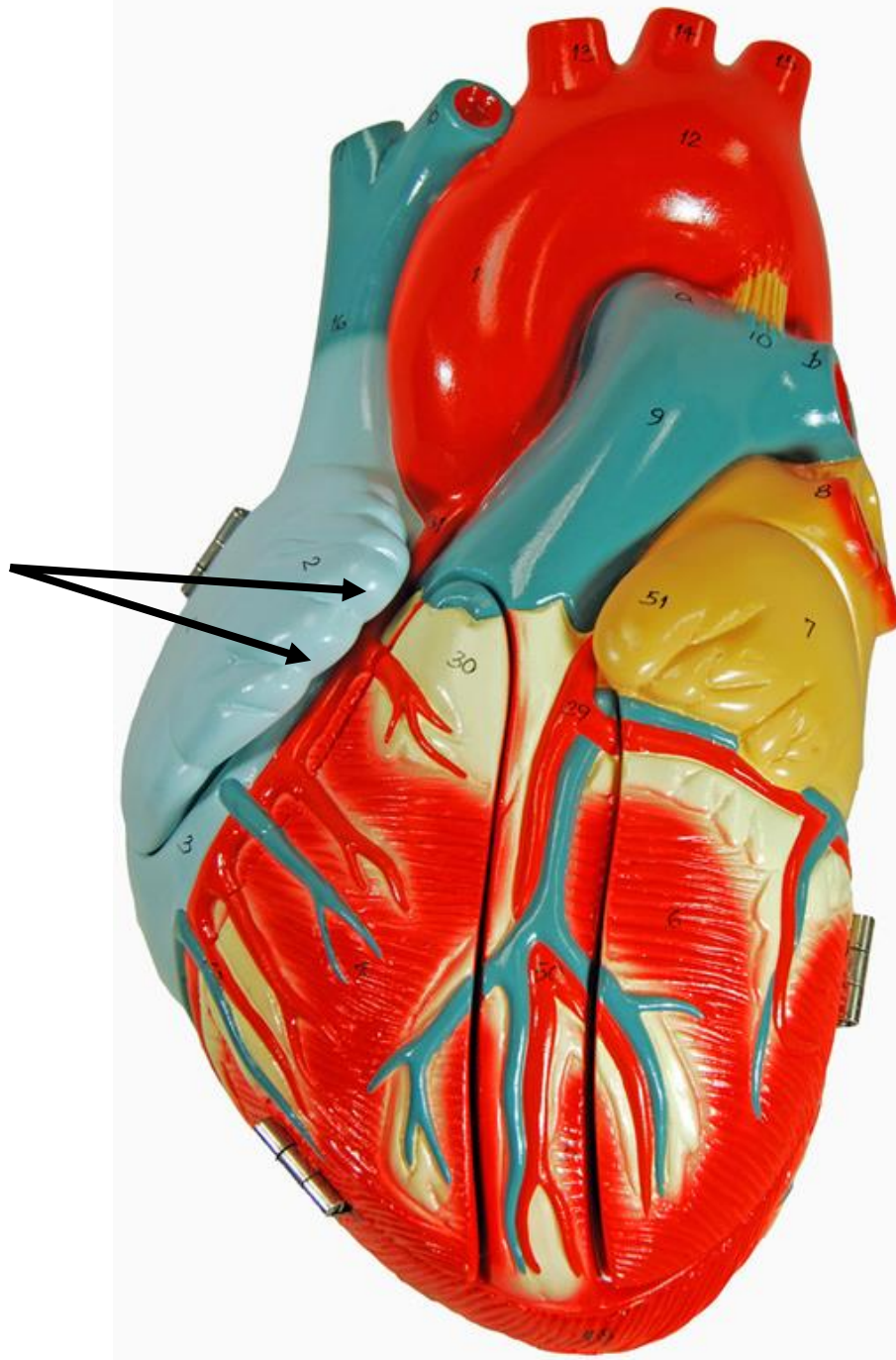


\*scroll to the next slide to check  
your answer



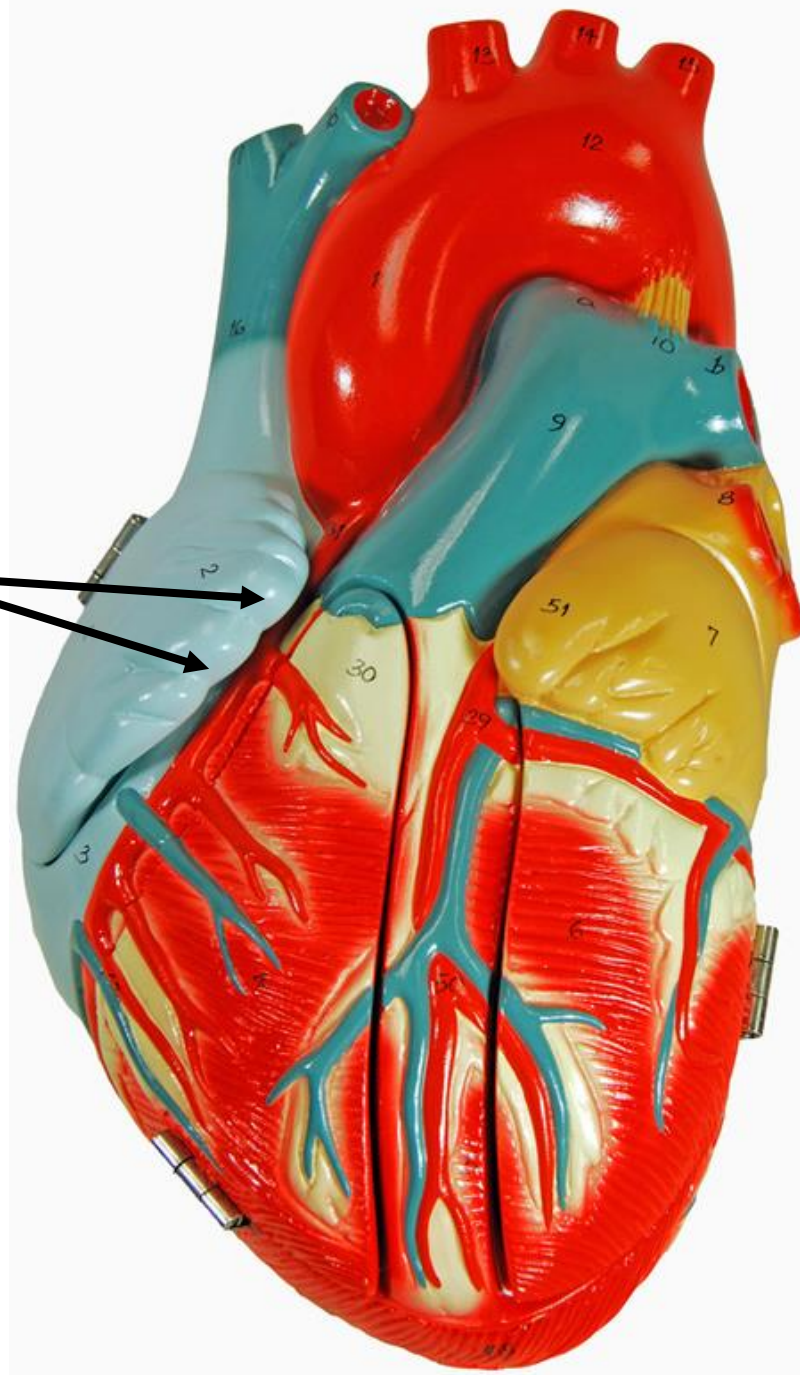


Ligamentum arteriosum

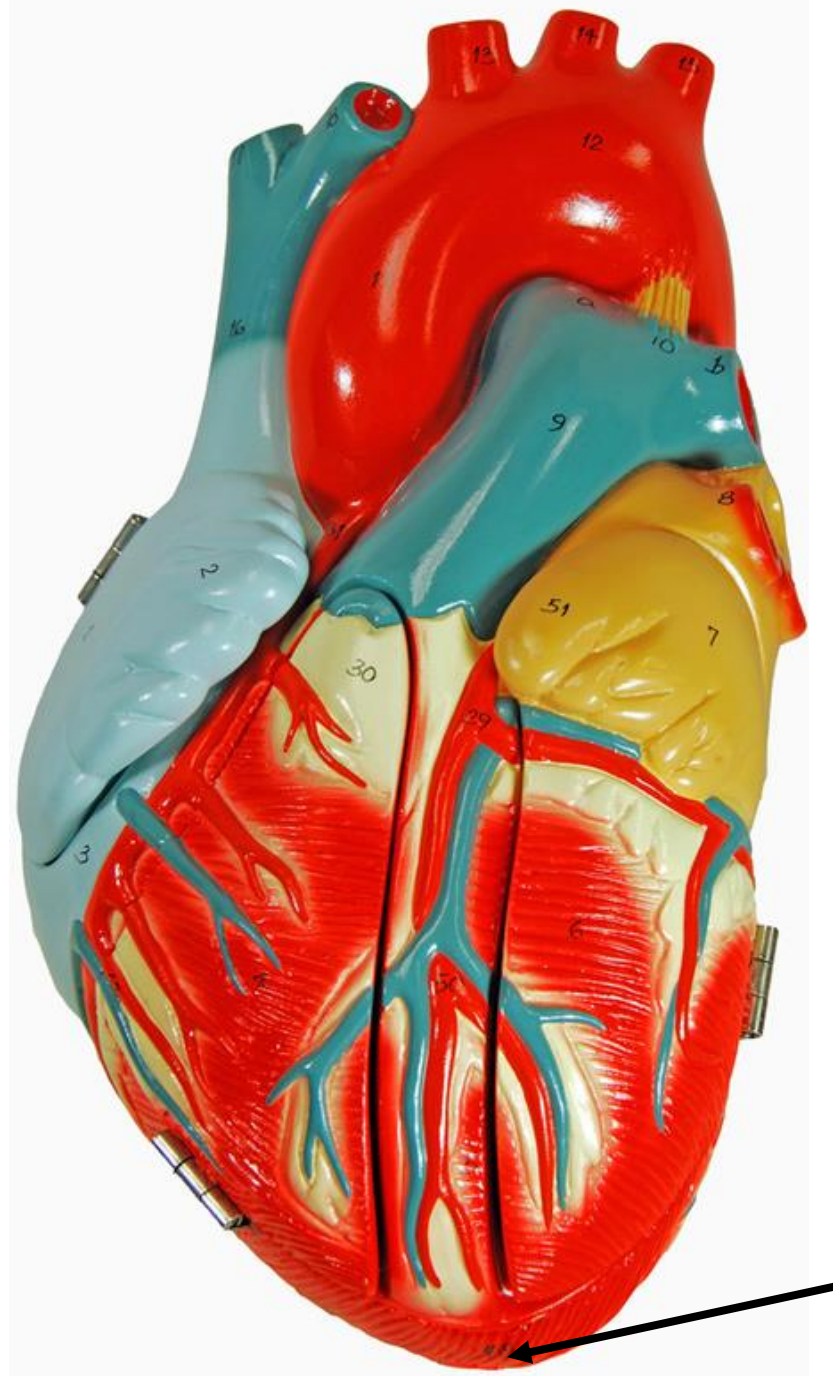


\*scroll to the next slide to  
check your answer

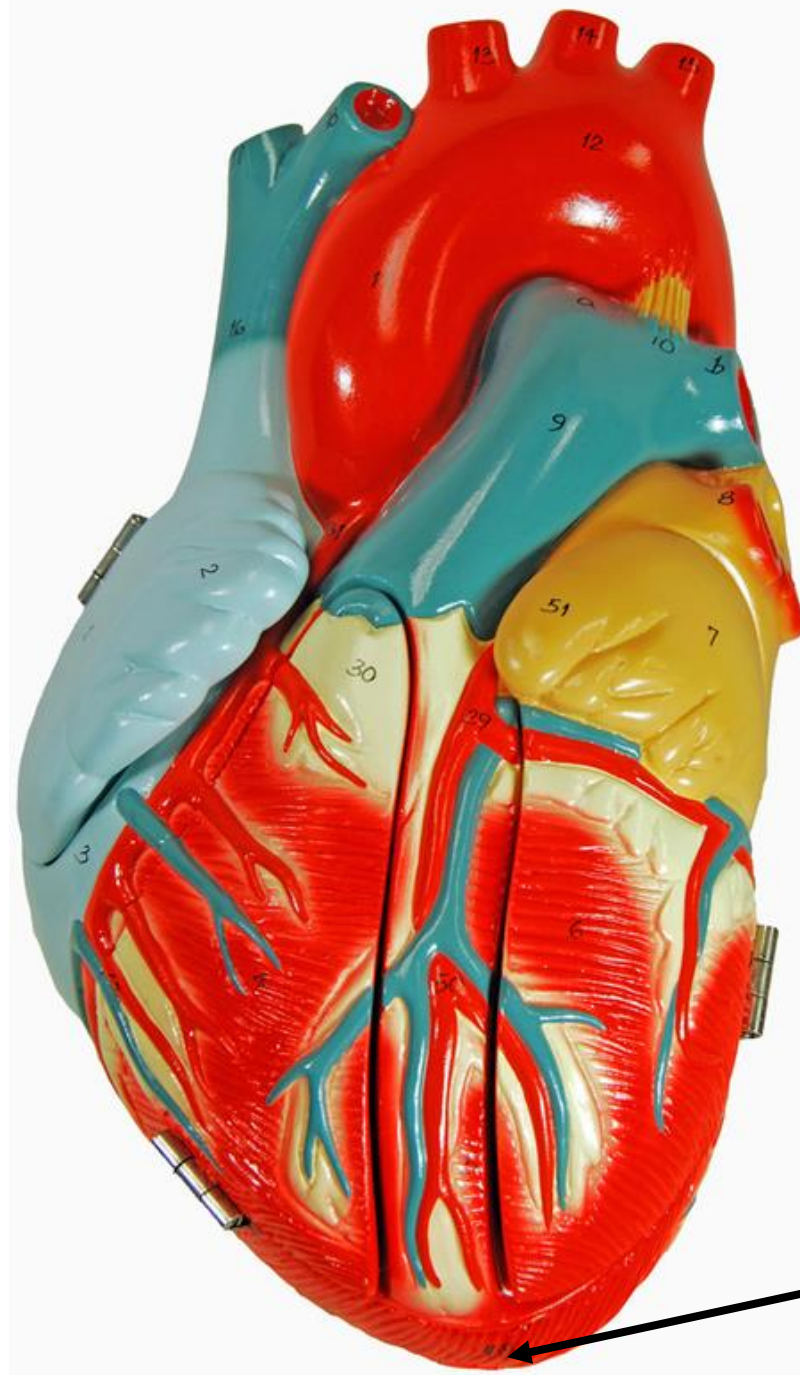
Auricle of right atrium



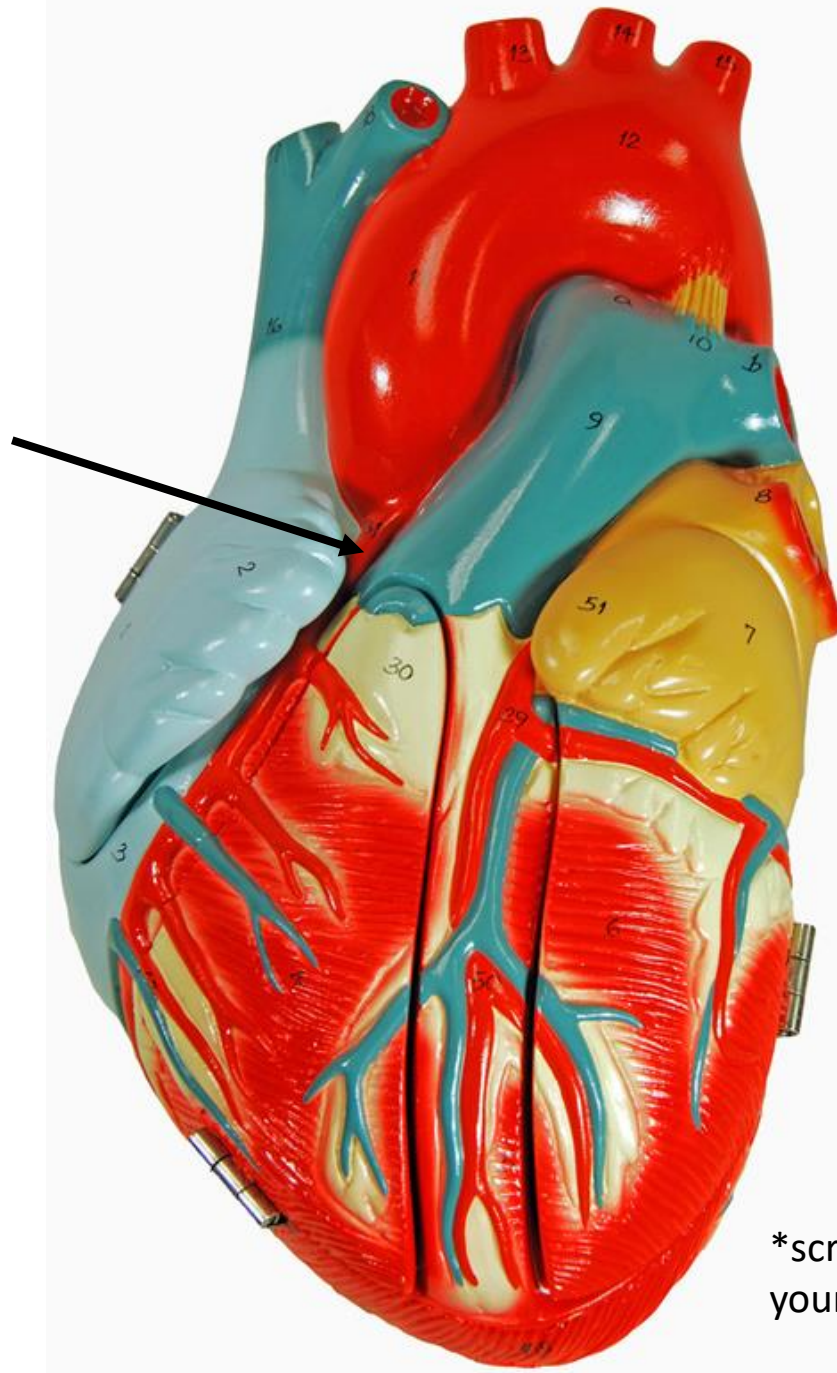




\*scroll to the next  
slide to check your  
answer



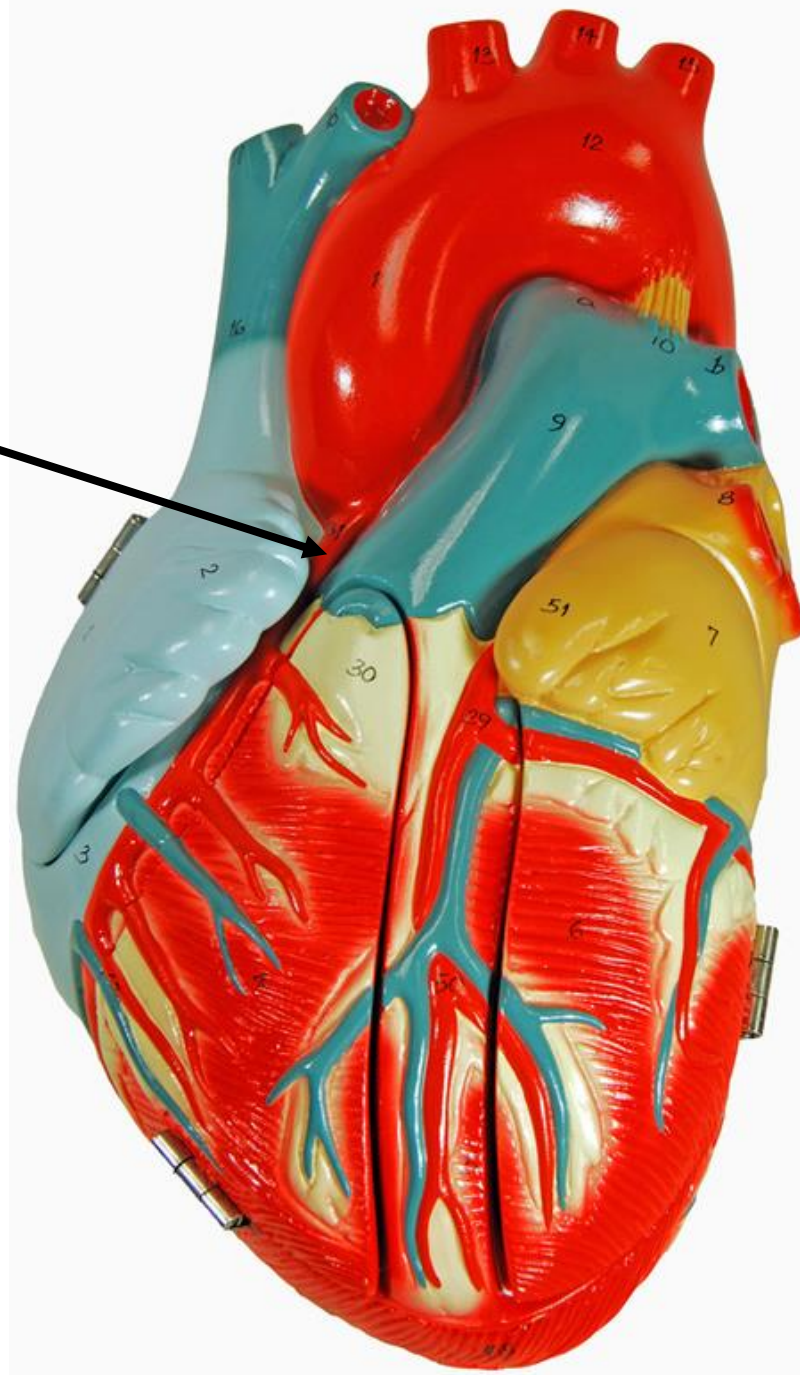
Apex of heart

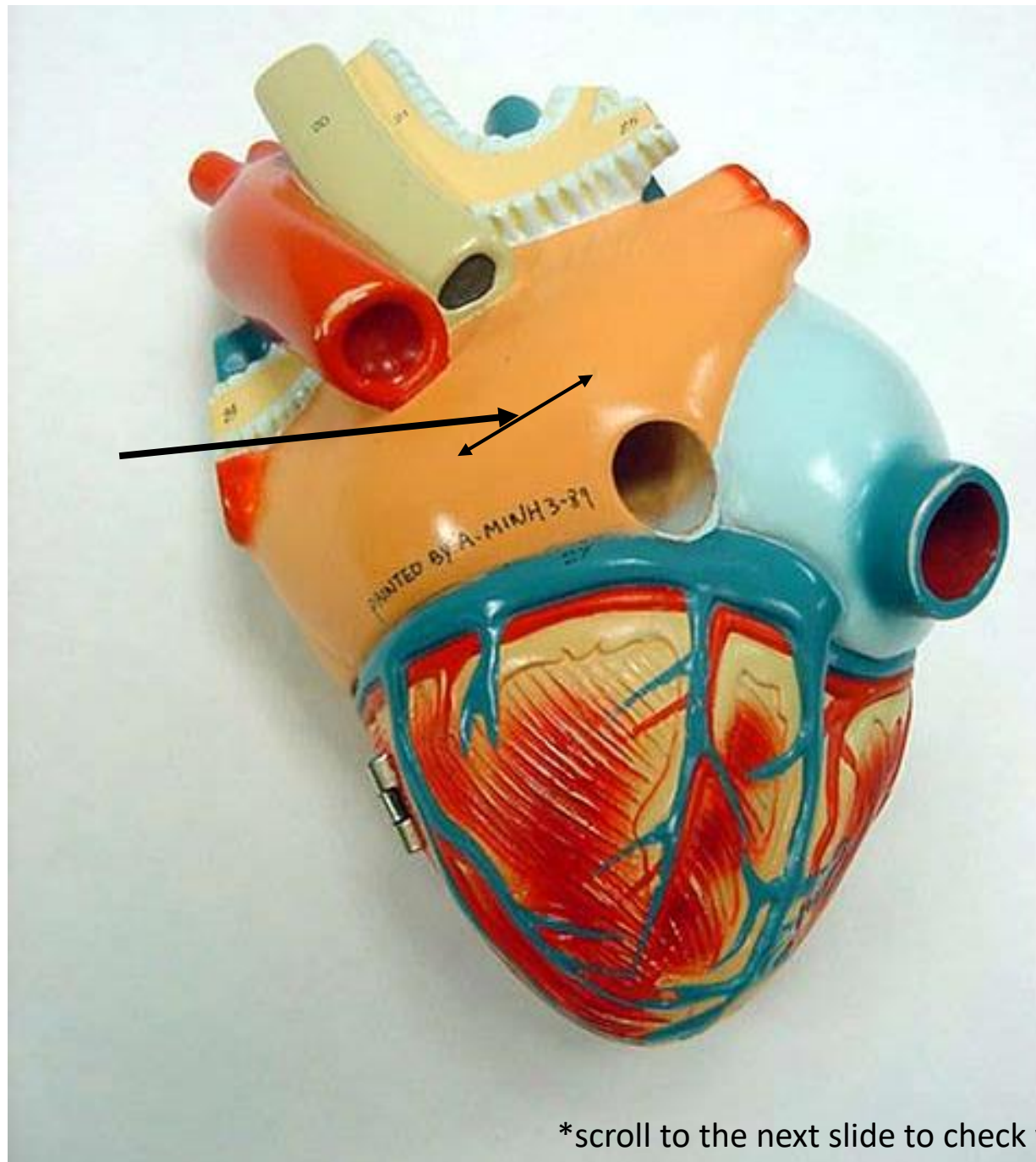


\*scroll to the next slide to check your answer



Right coronary artery

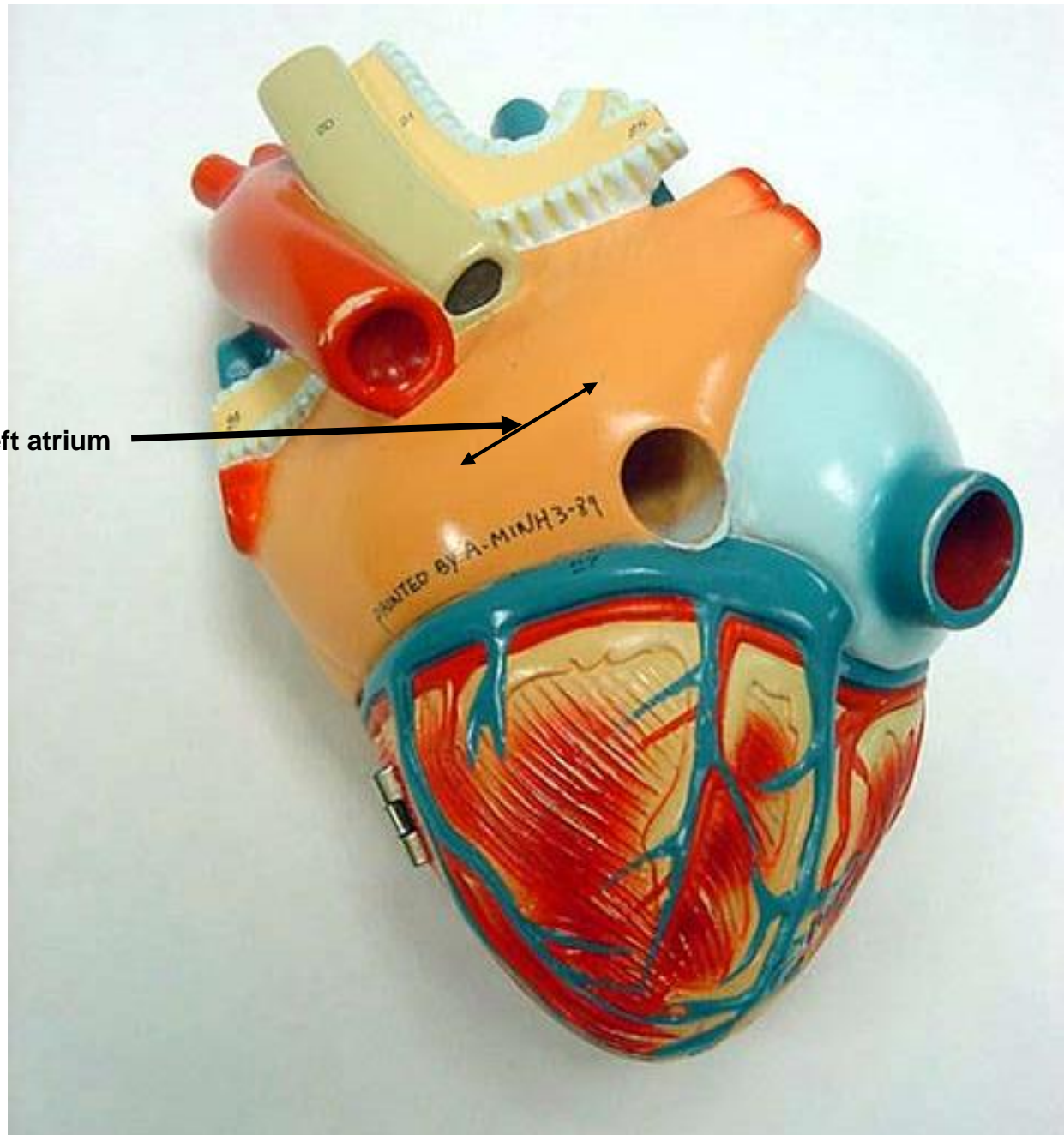


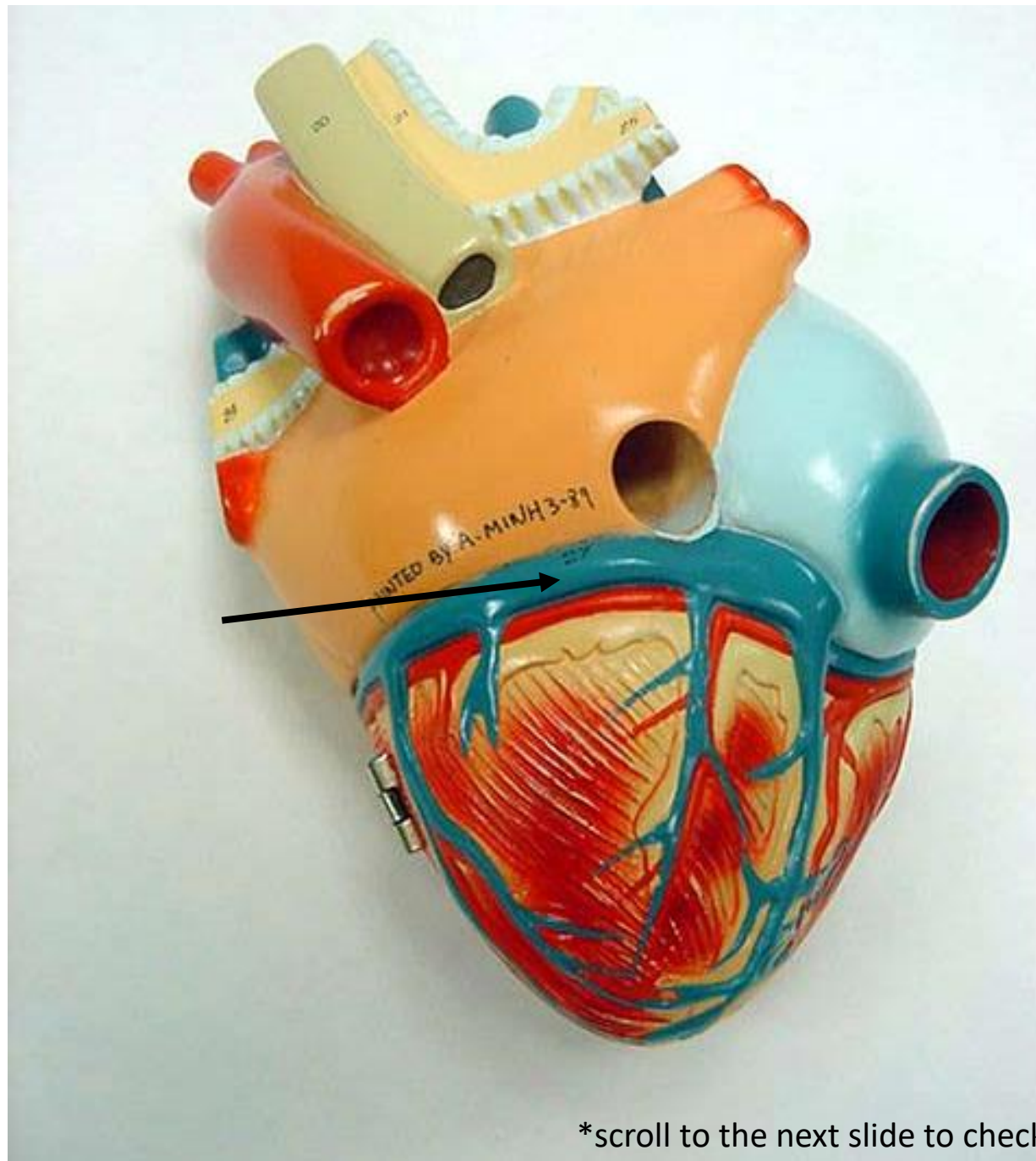


\*scroll to the next slide to check your answer



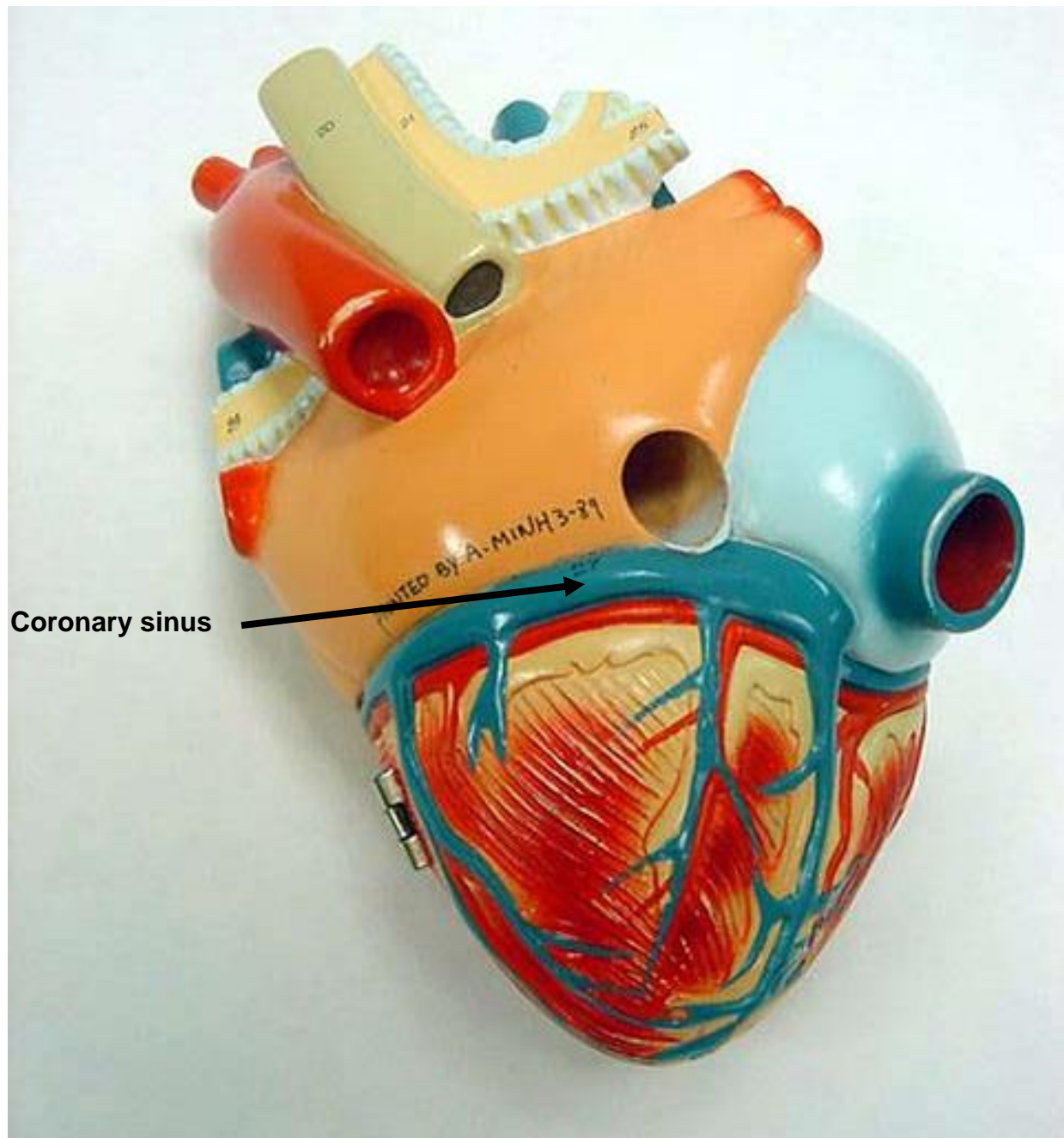
Left atrium



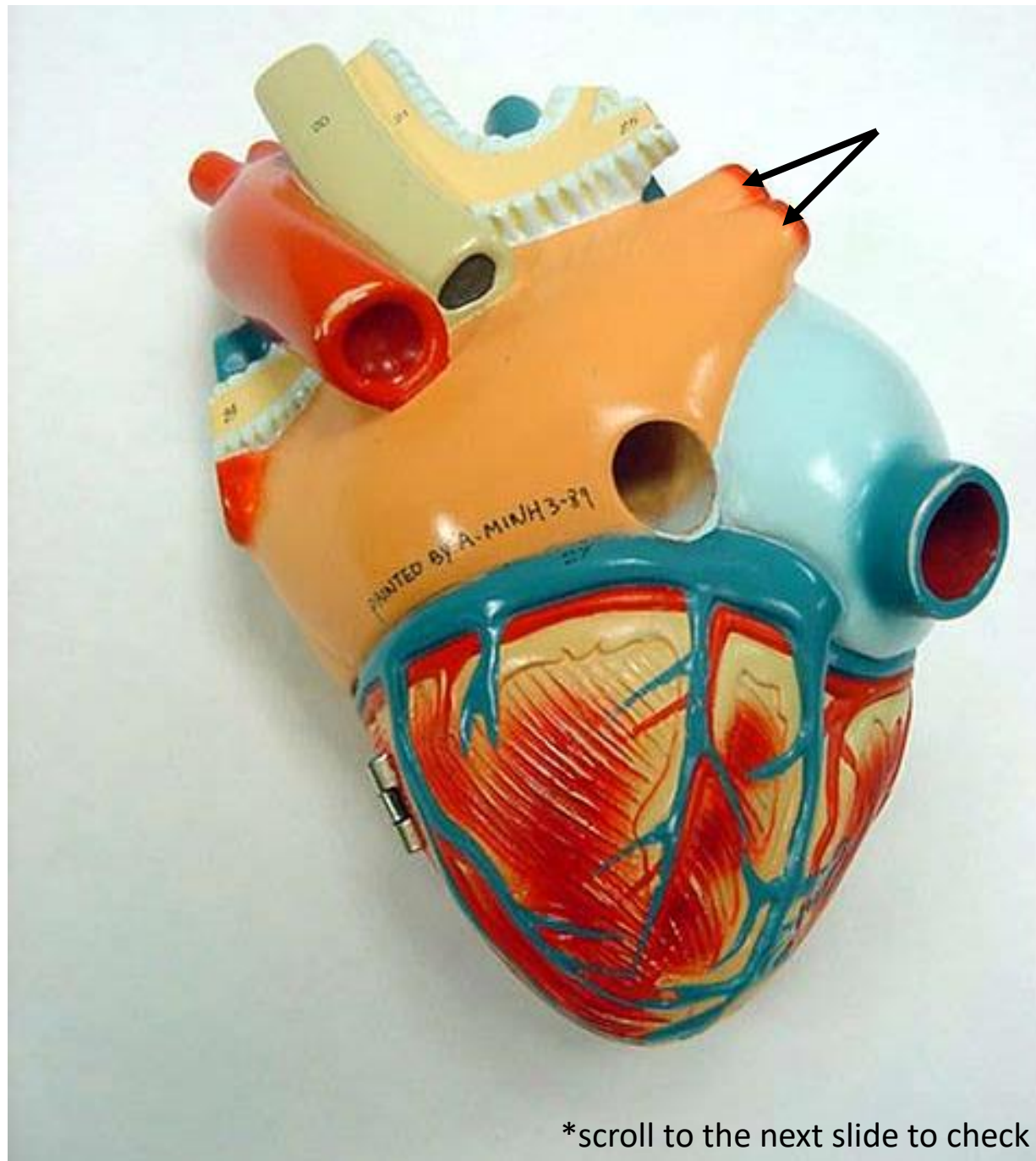


\*scroll to the next slide to check your answer

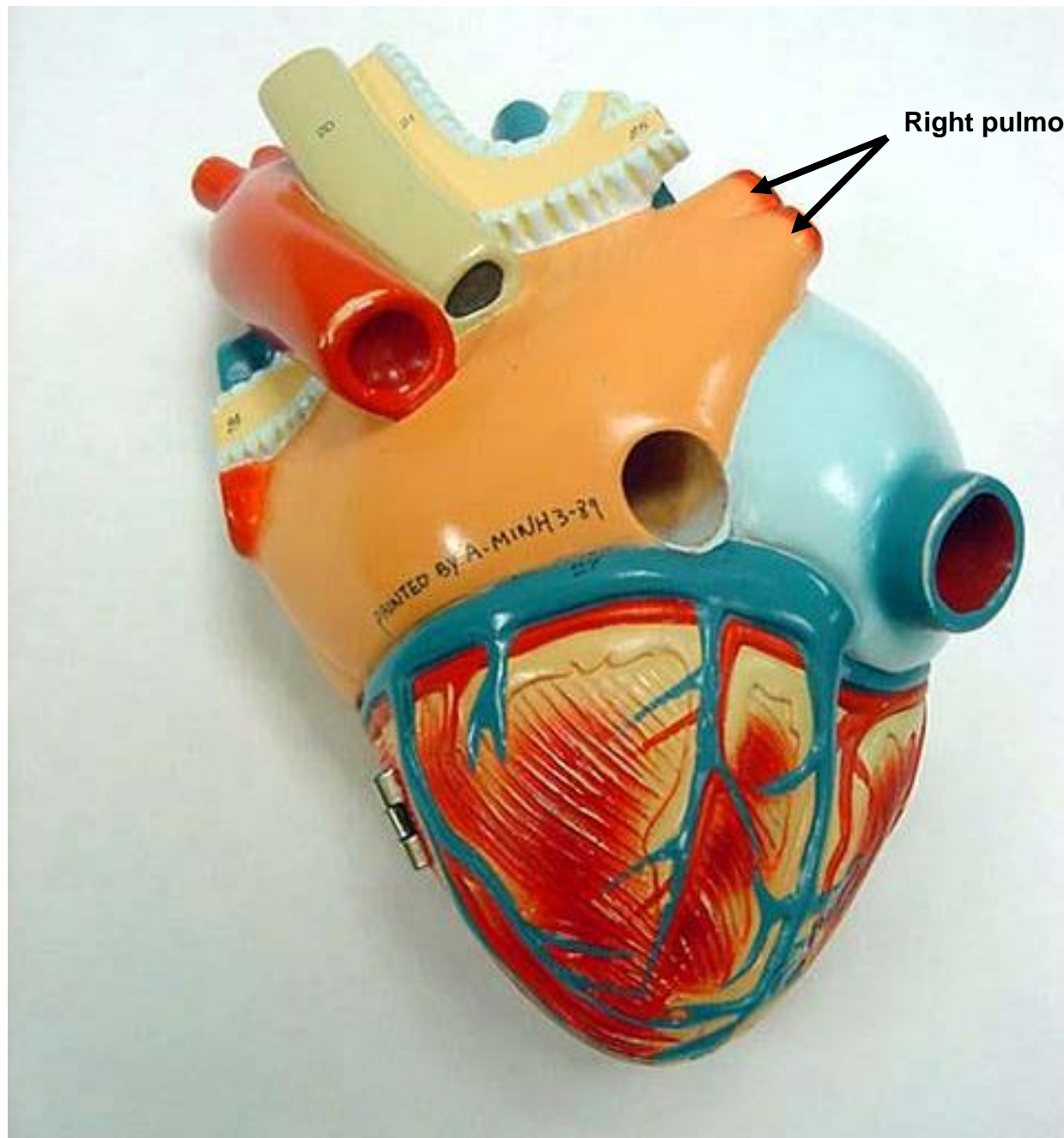
Coronary sinus





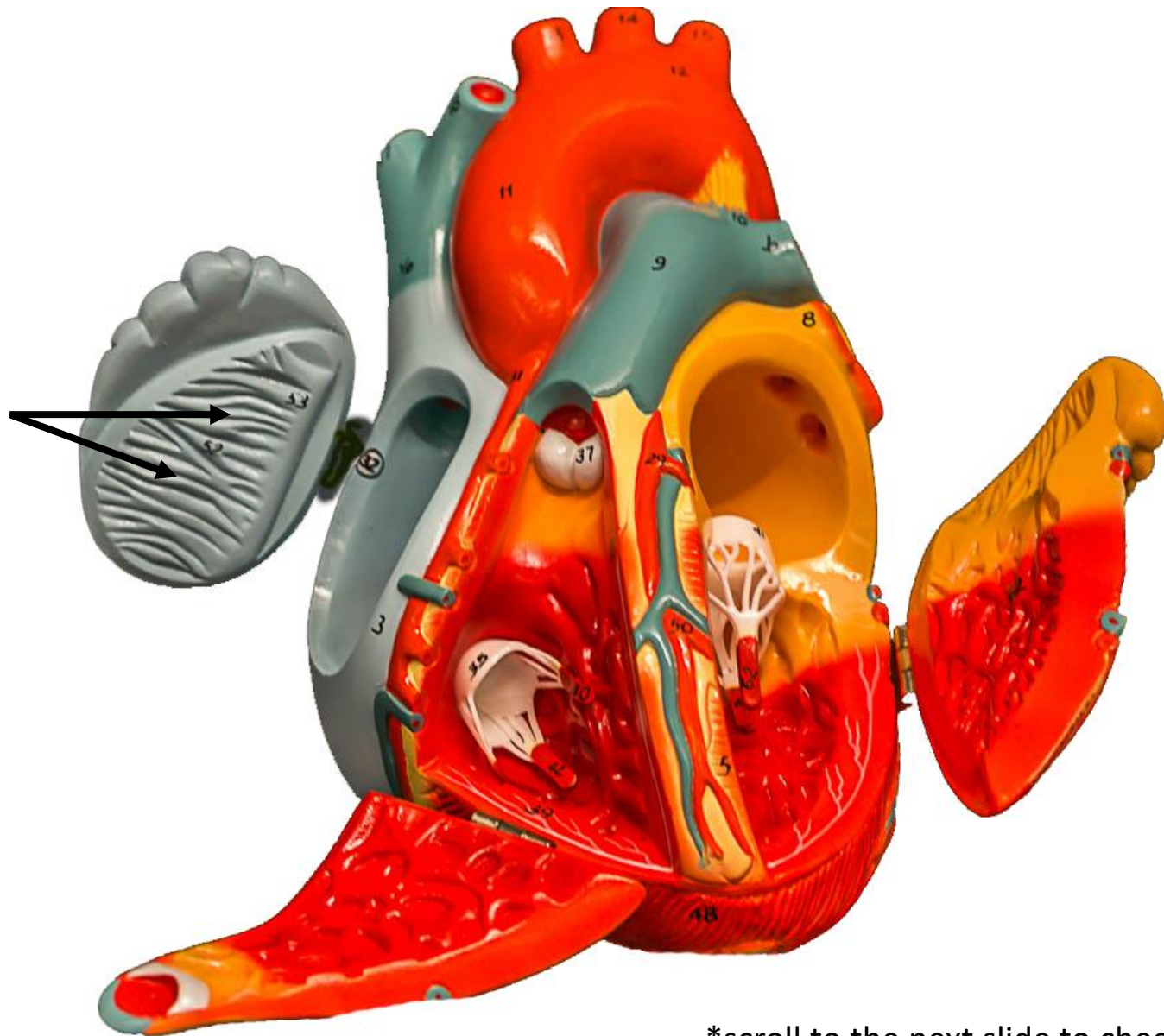


\*scroll to the next slide to check your answer



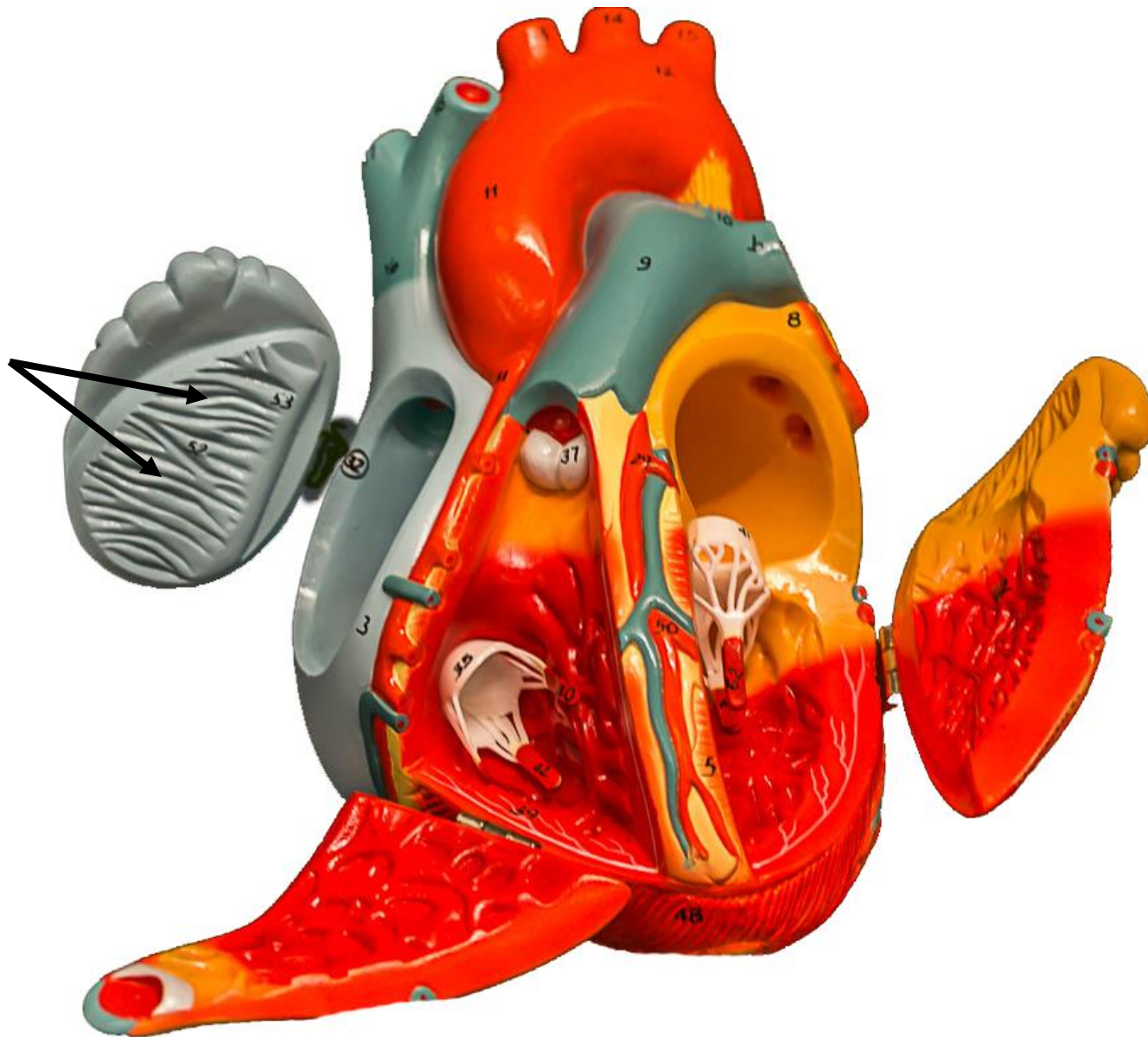
Right pulmonary veins

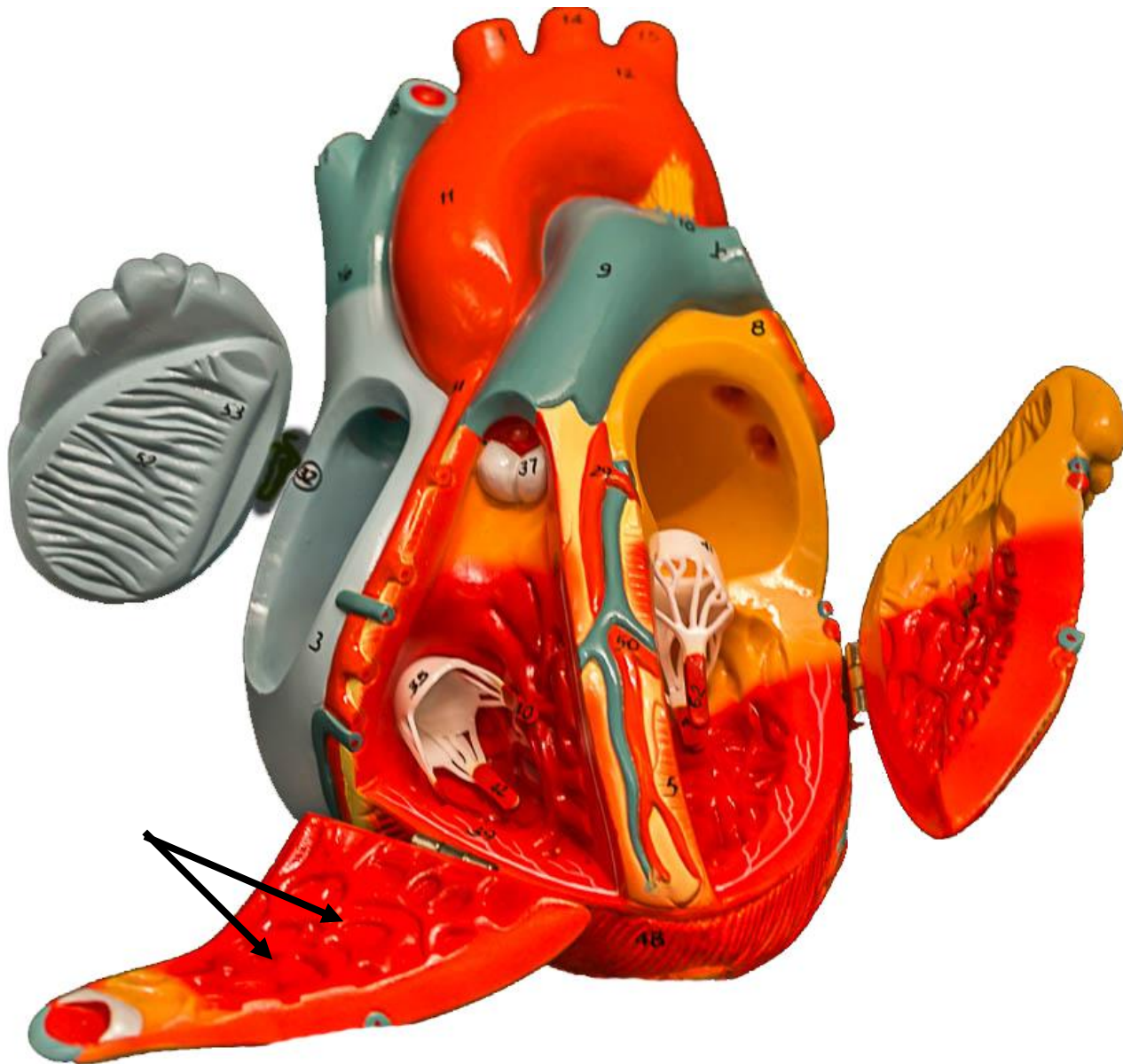




\*scroll to the next slide to check your answer

Pectinate  
muscles

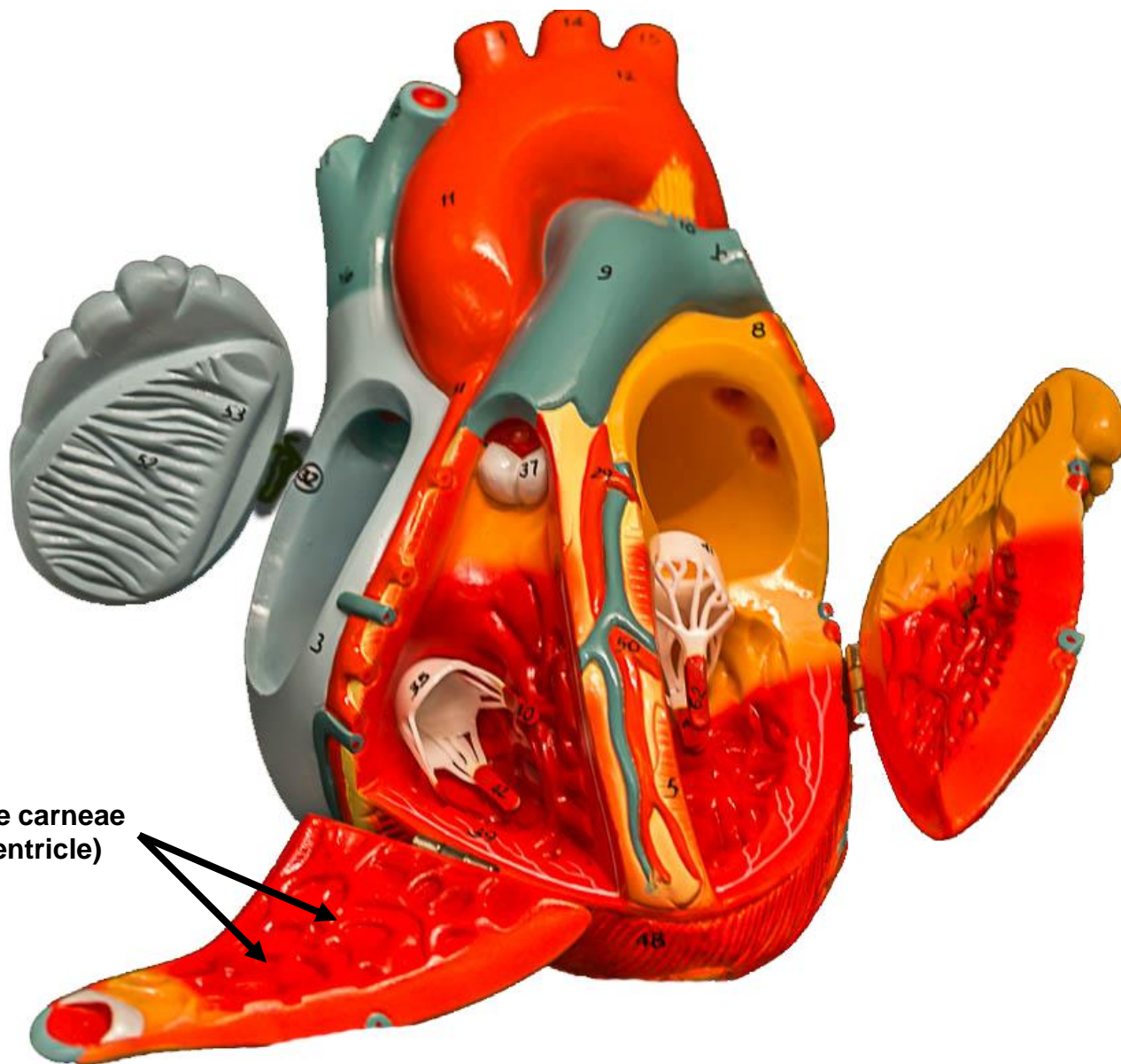


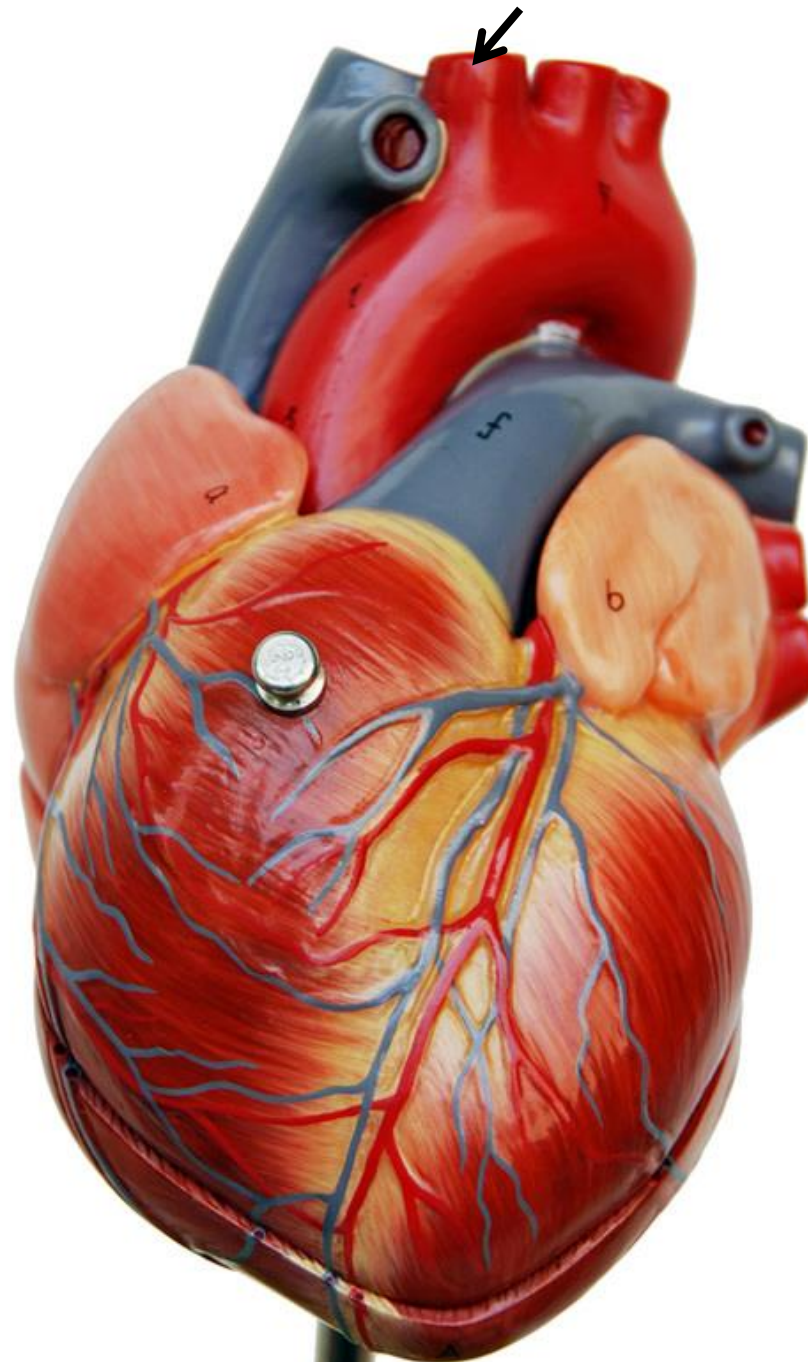


\*scroll to the next slide to check your answer



Trabeculae carneae  
(in right ventricle)

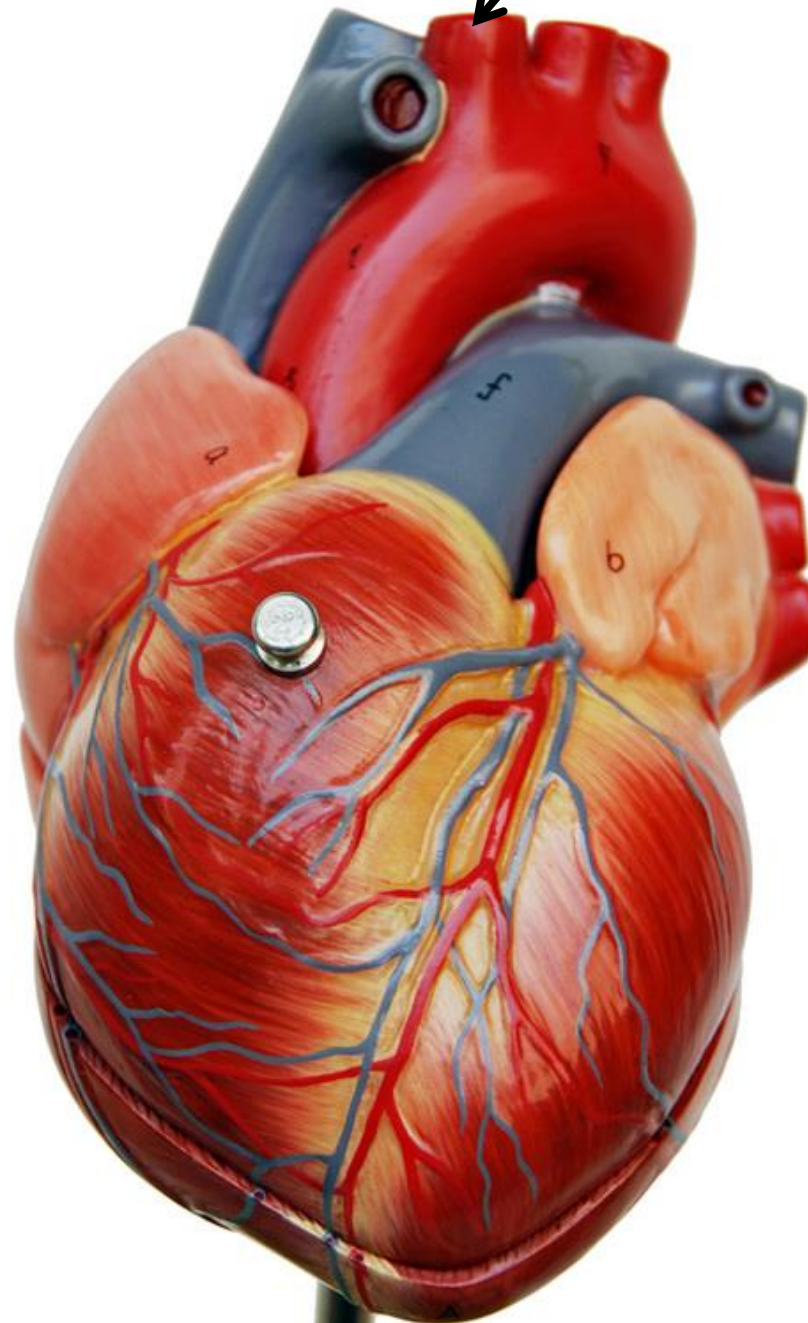


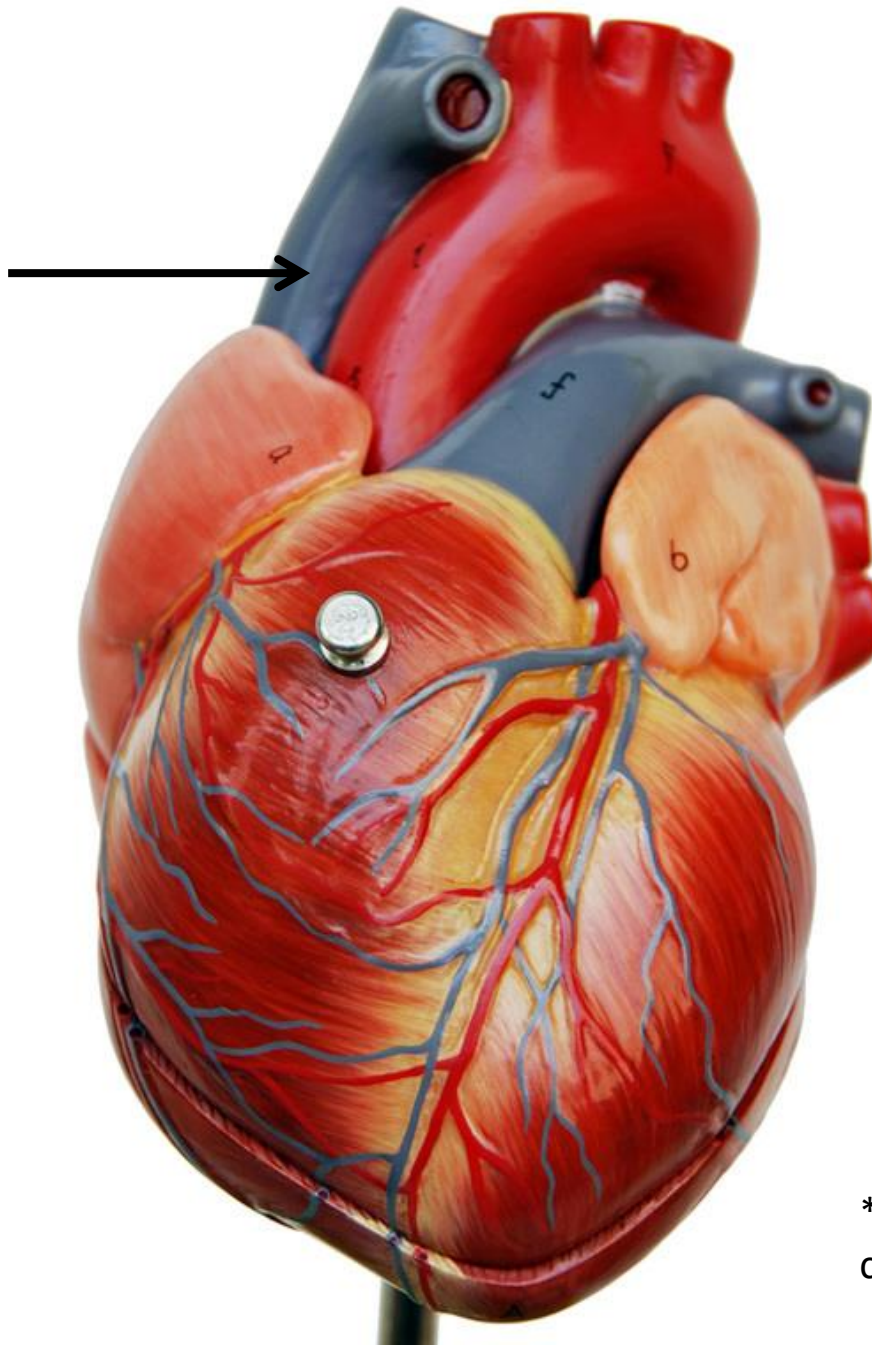


\*scroll to the next slide to  
check your answer



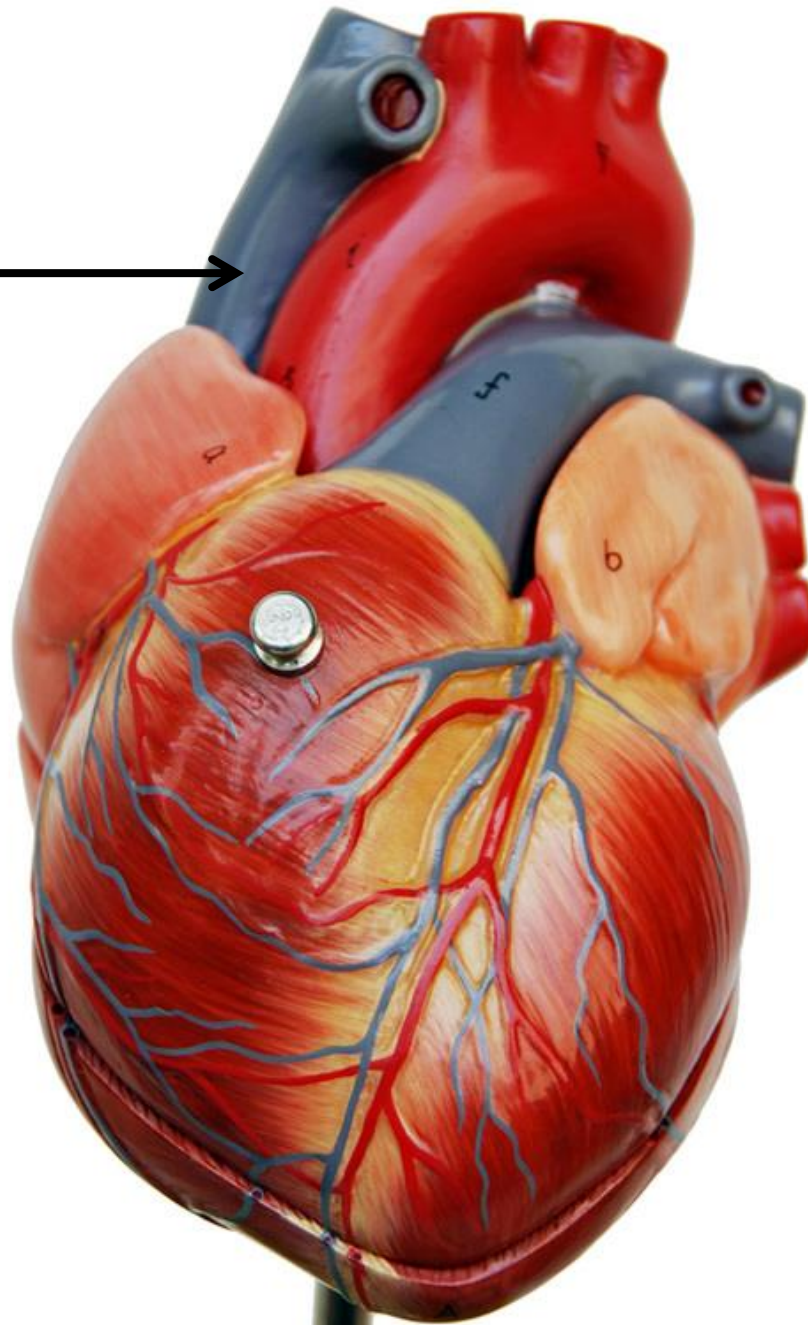
Brachiocephalic trunk

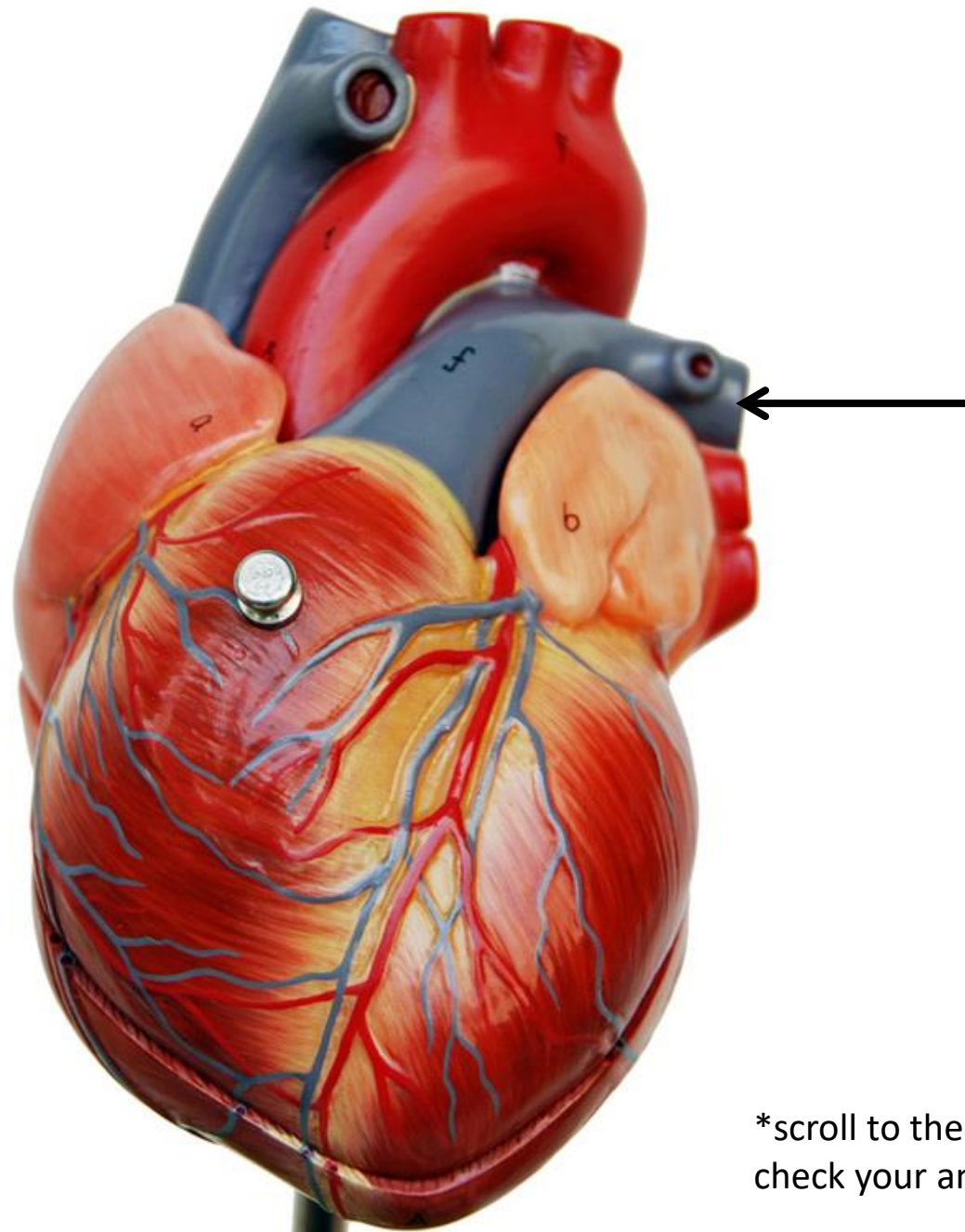




\*scroll to the next slide to  
check your answer

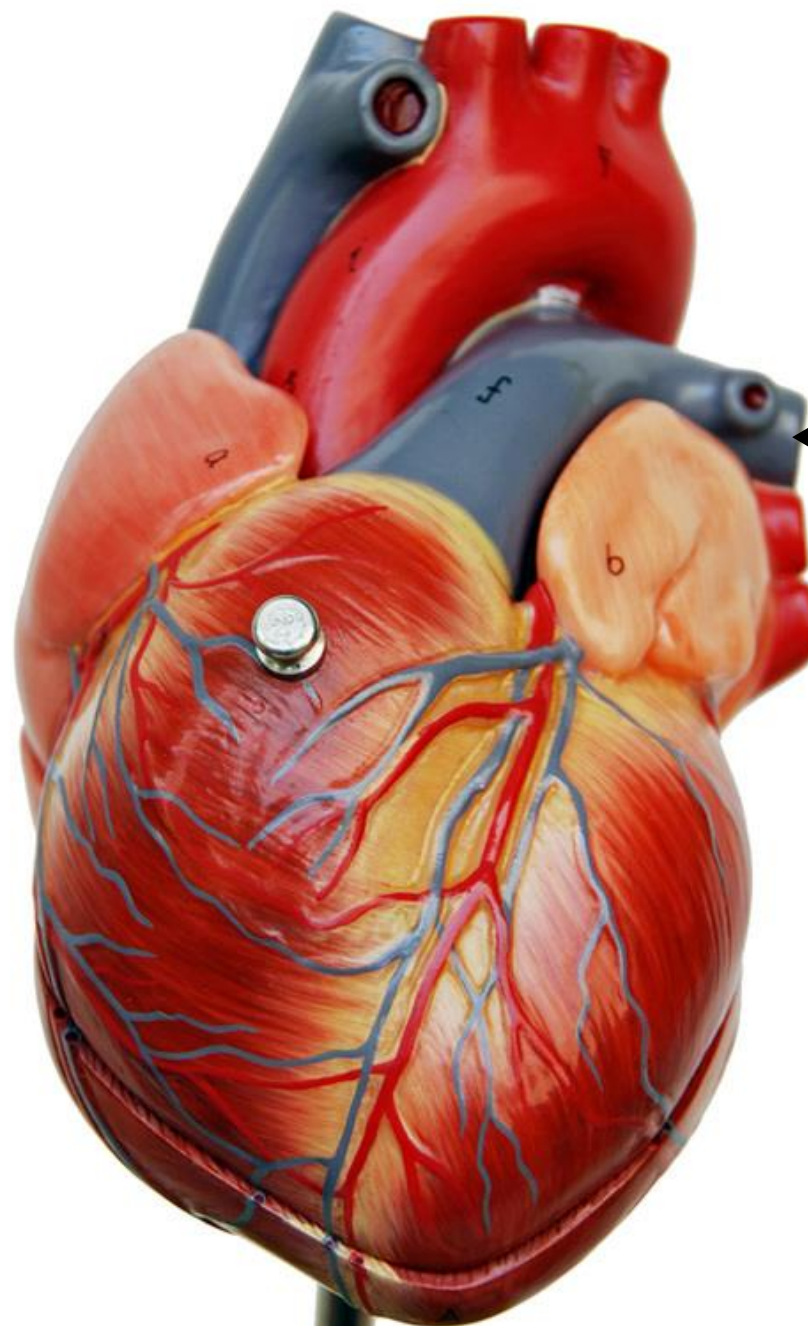
Superior vena cava →





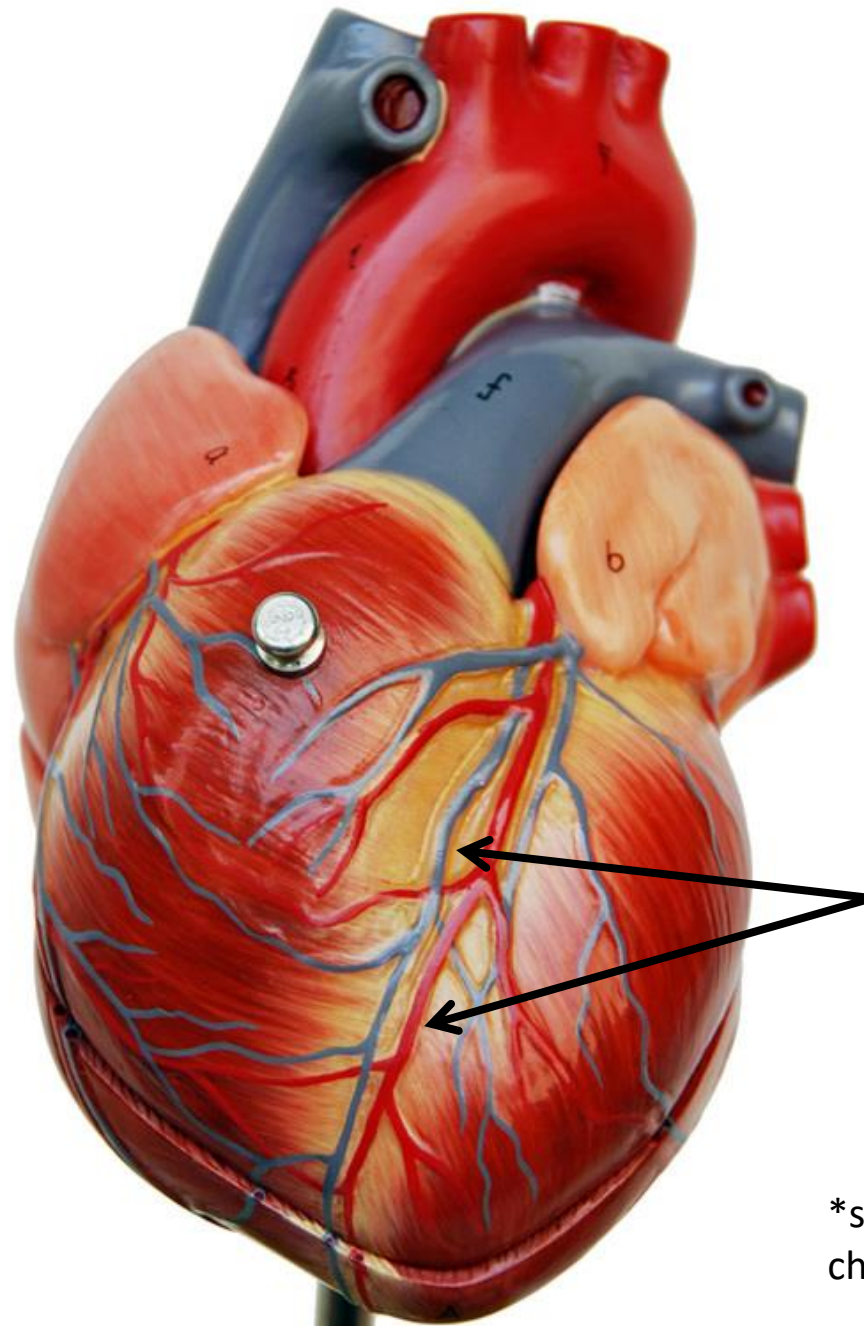
\*scroll to the next slide to  
check your answer



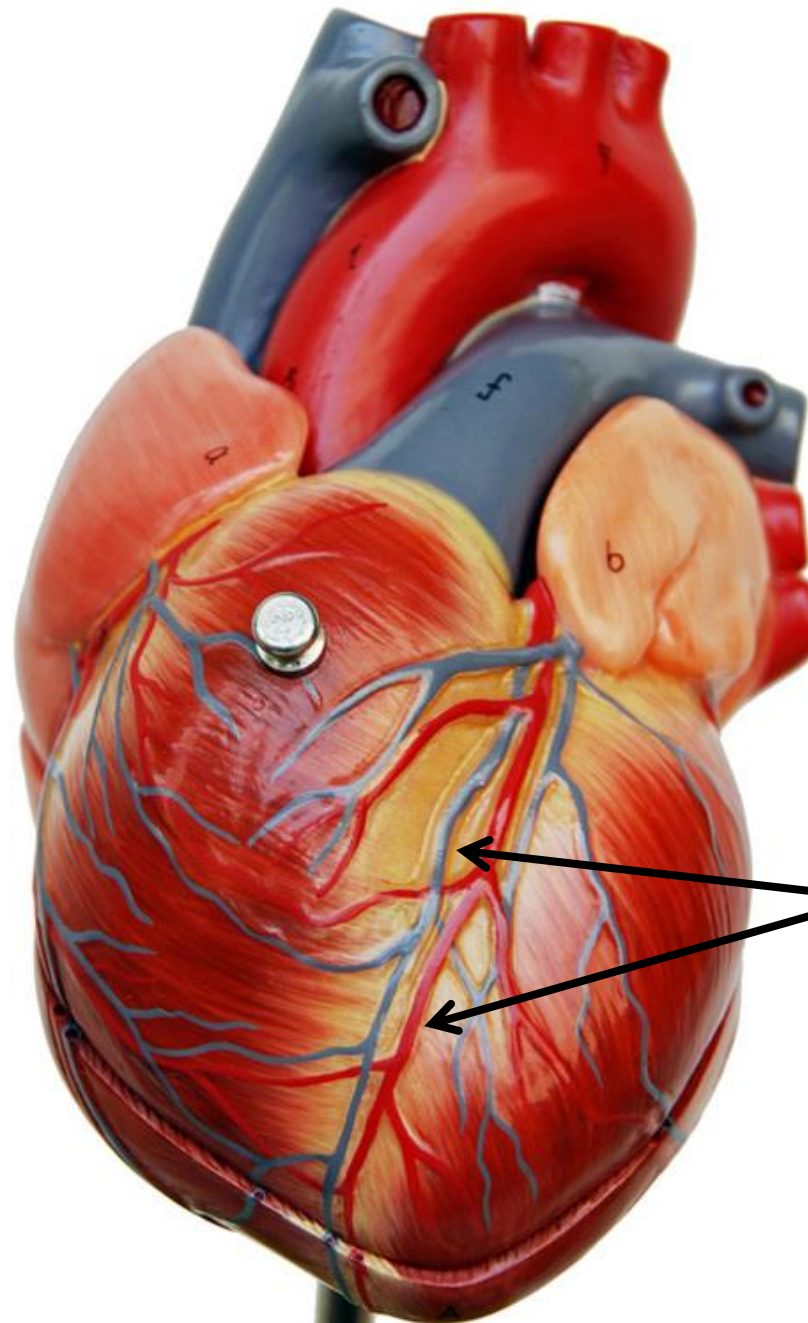


Left pulmonary artery



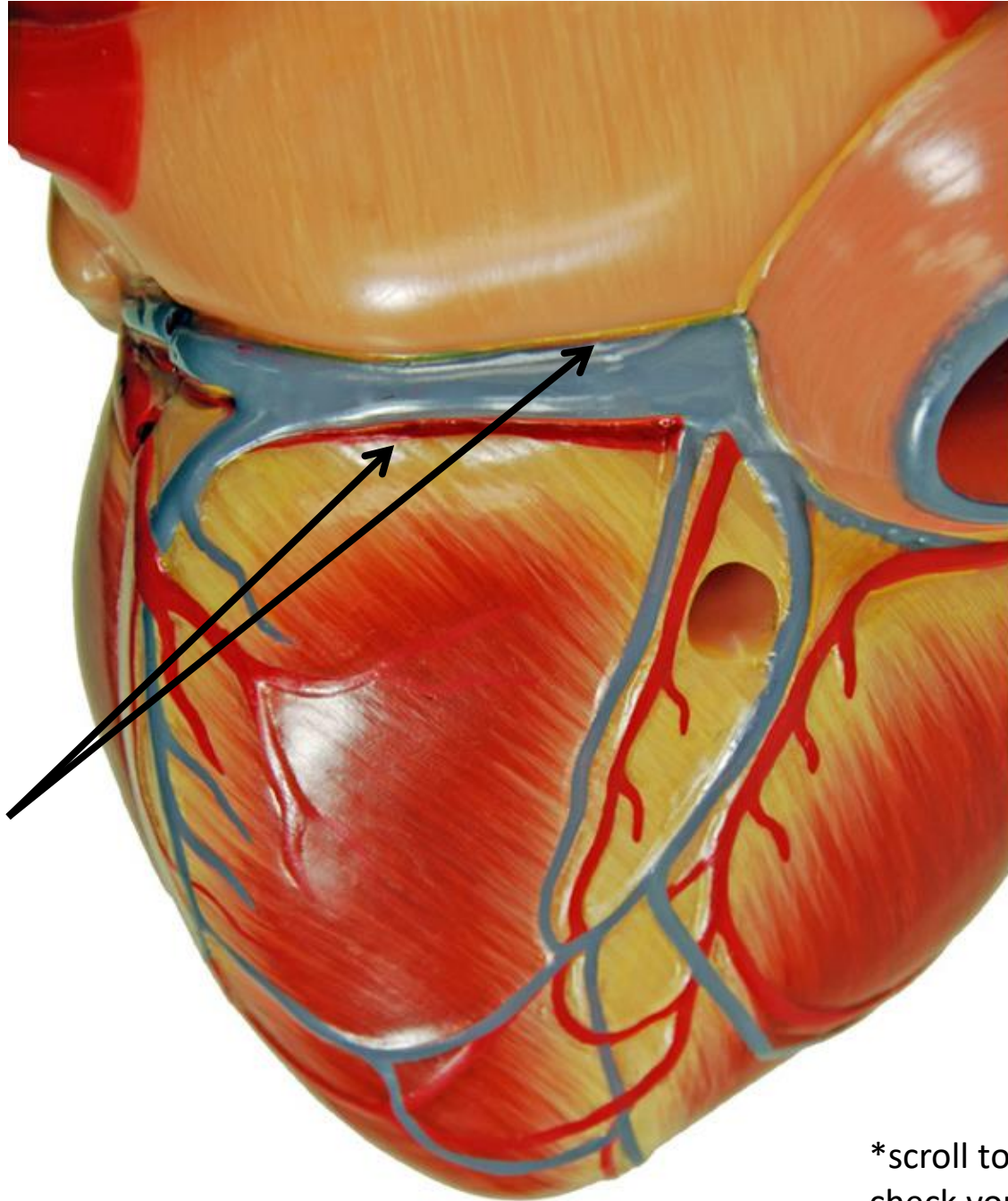


\*scroll to the next slide to  
check your answer



**Anterior interventricular sulcus**

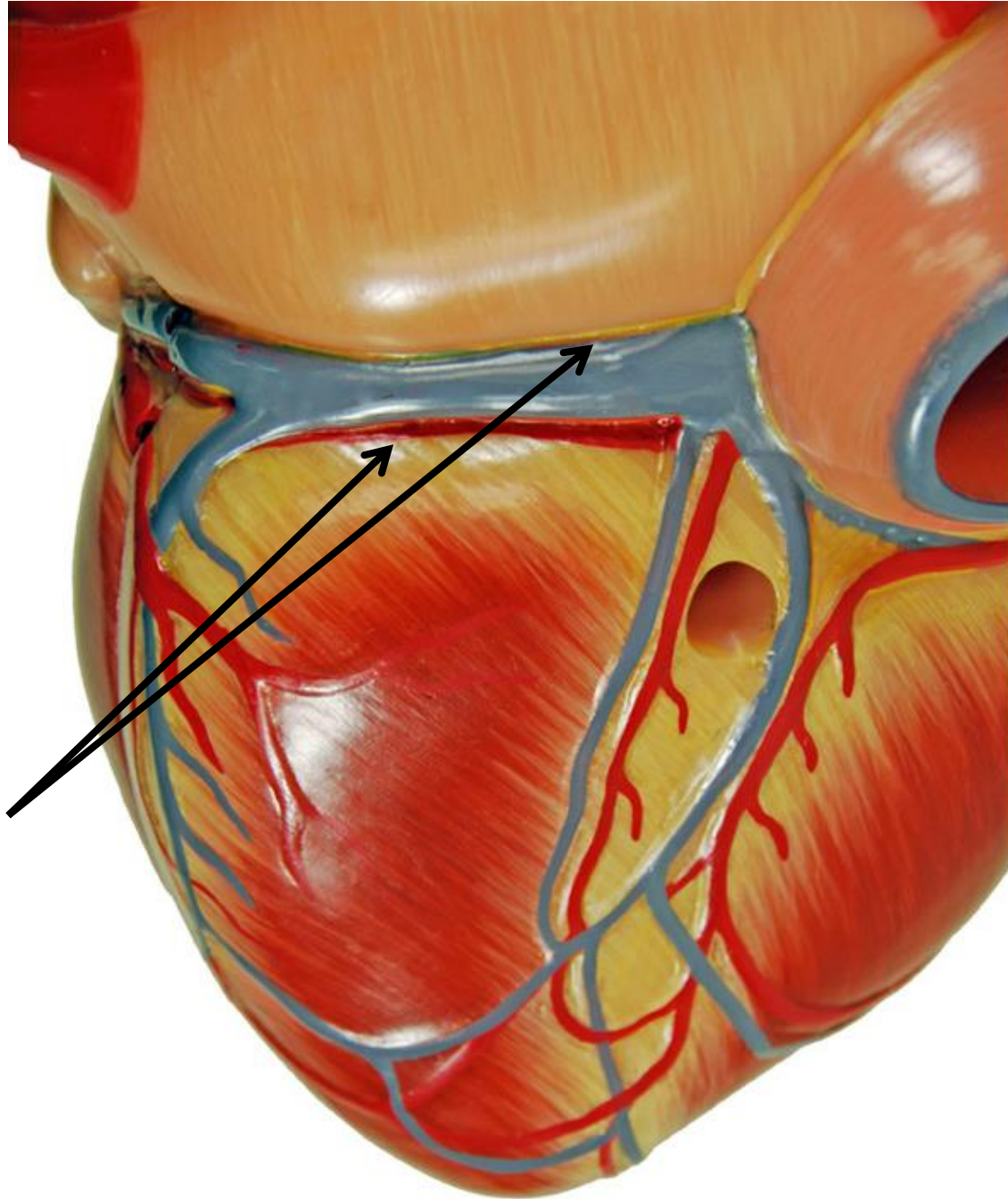
(indentation)



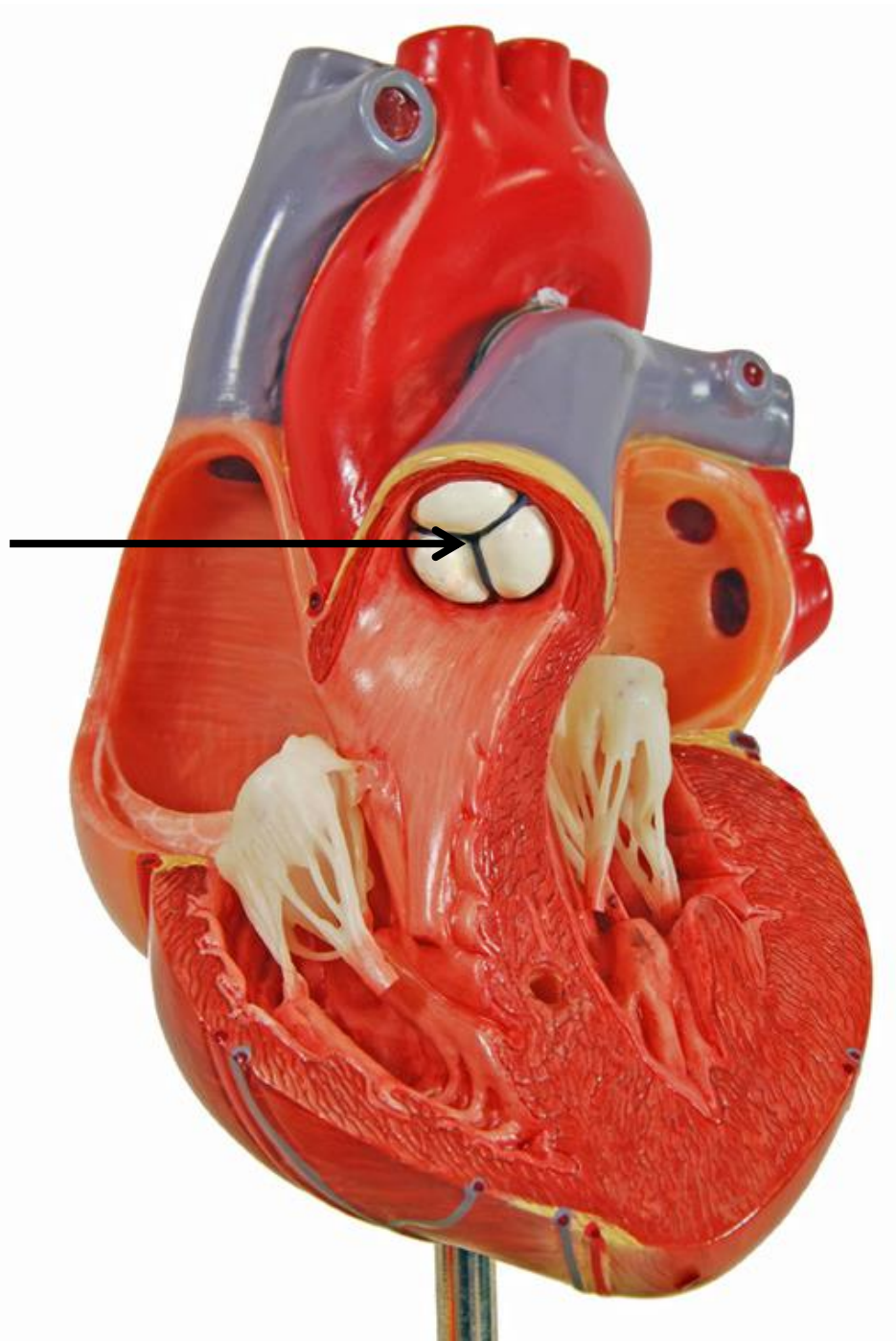
\*scroll to the next slide to  
check your answer



Coronary sulcus

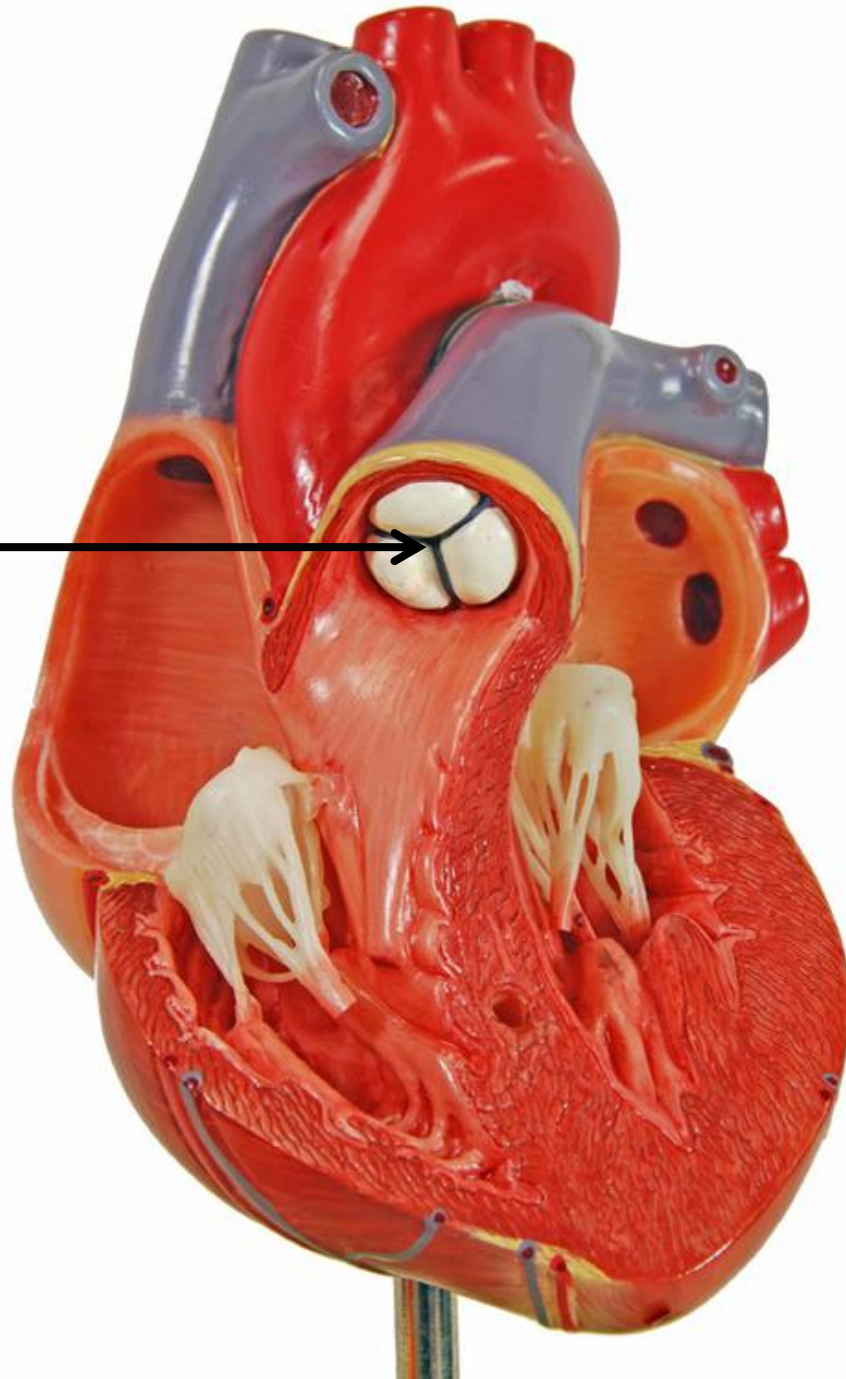


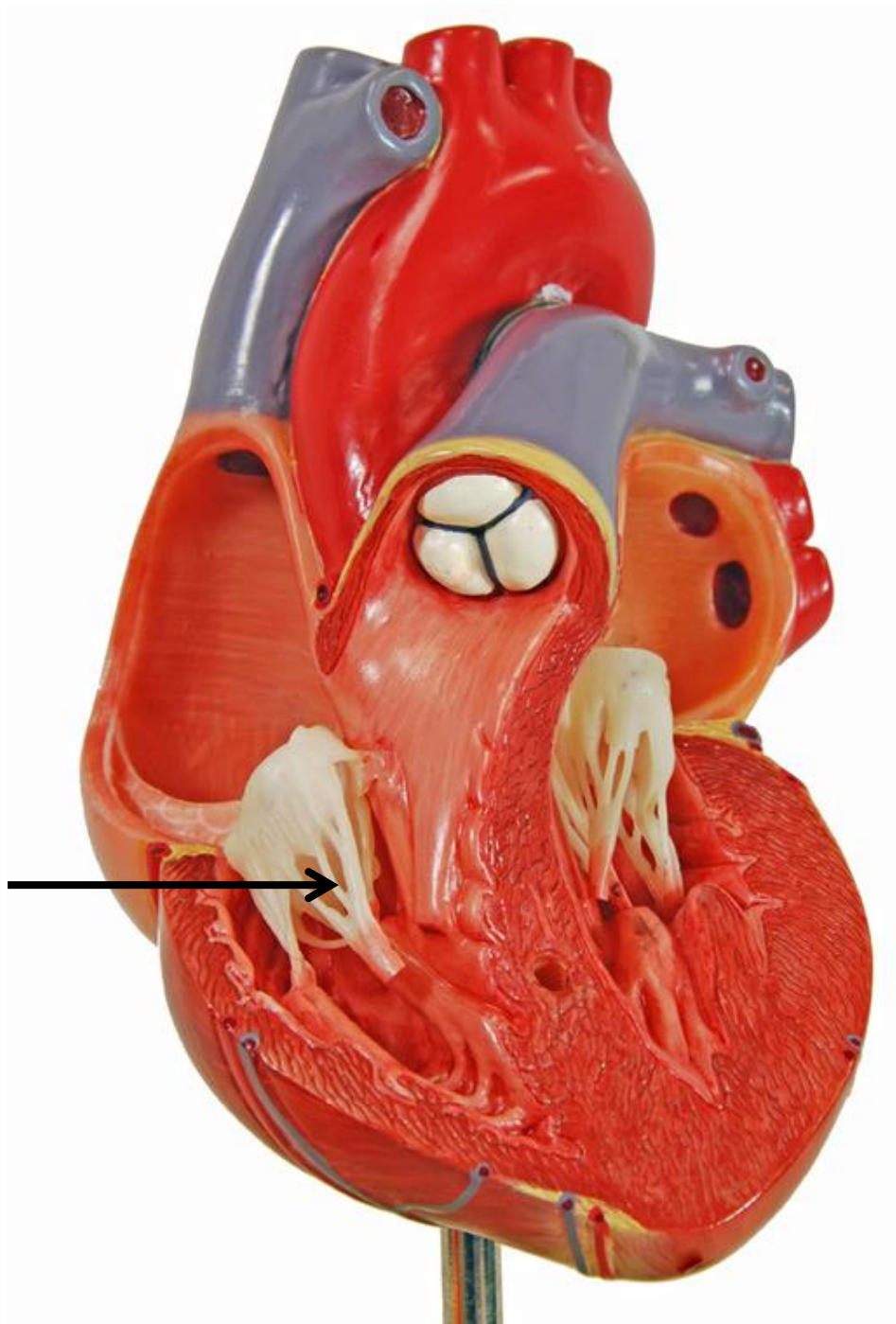




\*scroll to the next slide  
to check your answer

Pulmonary semilunar valve

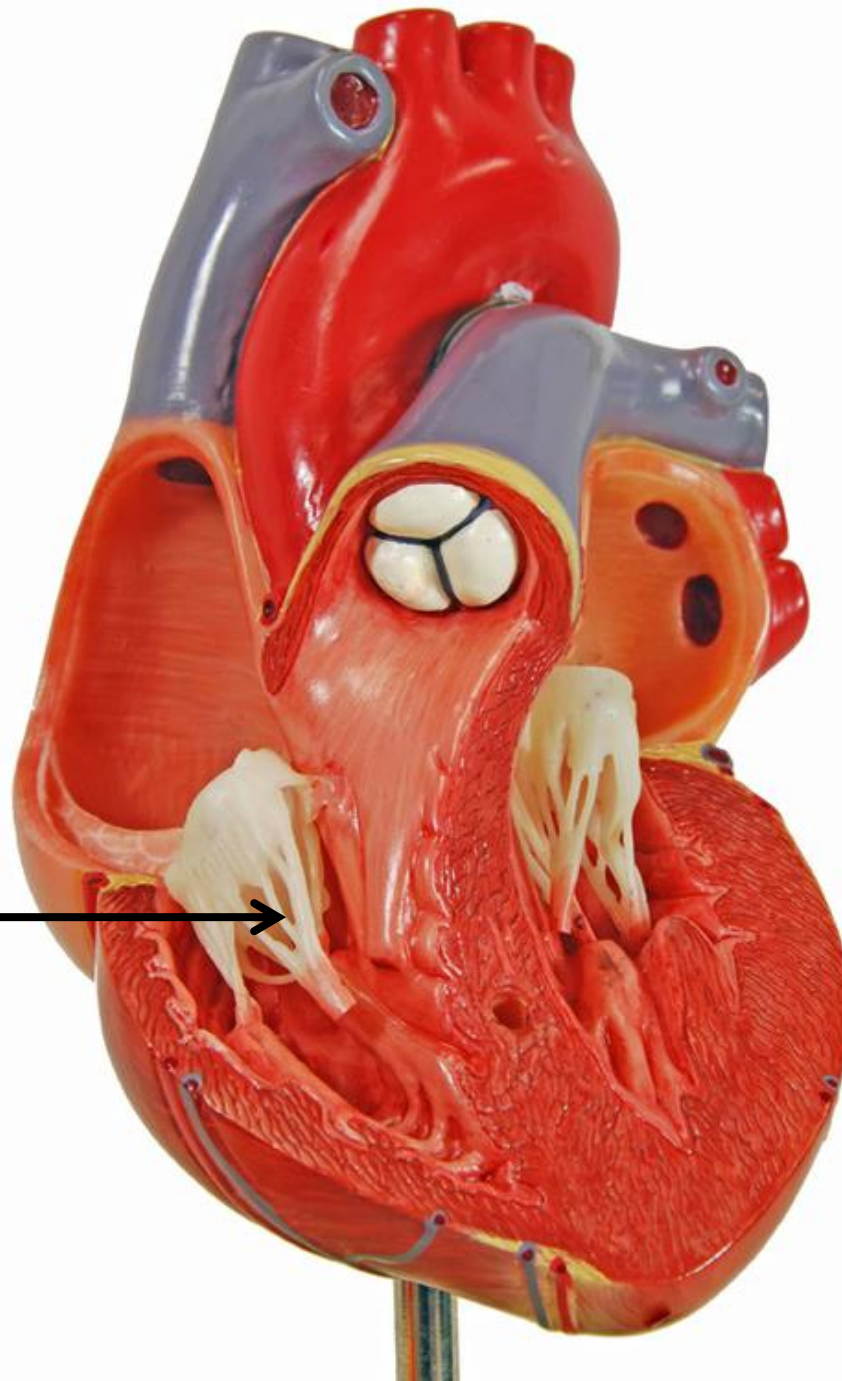




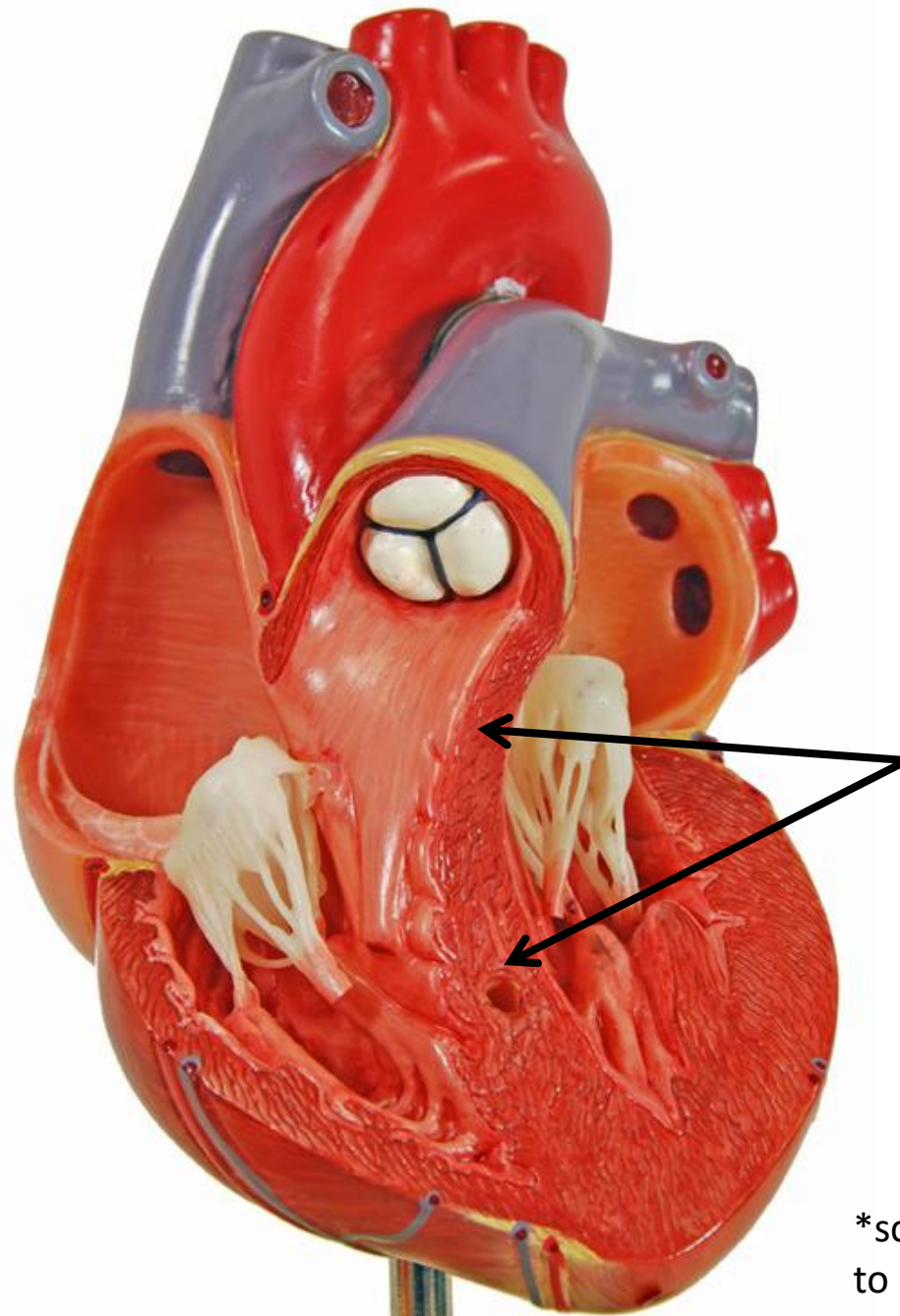
\*scroll to the next  
slide to check your  
answer



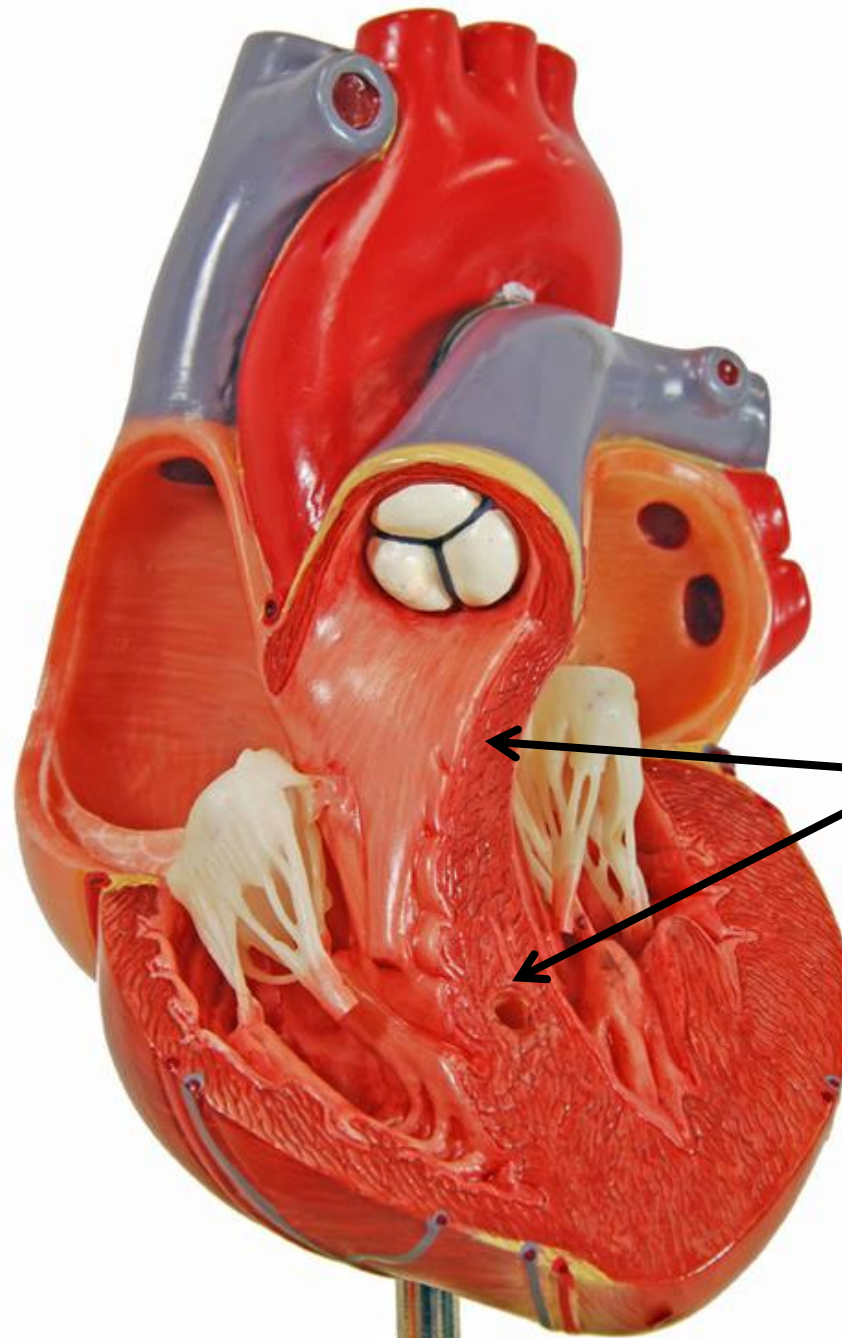
Chordae tendineae  
of tricuspid valve



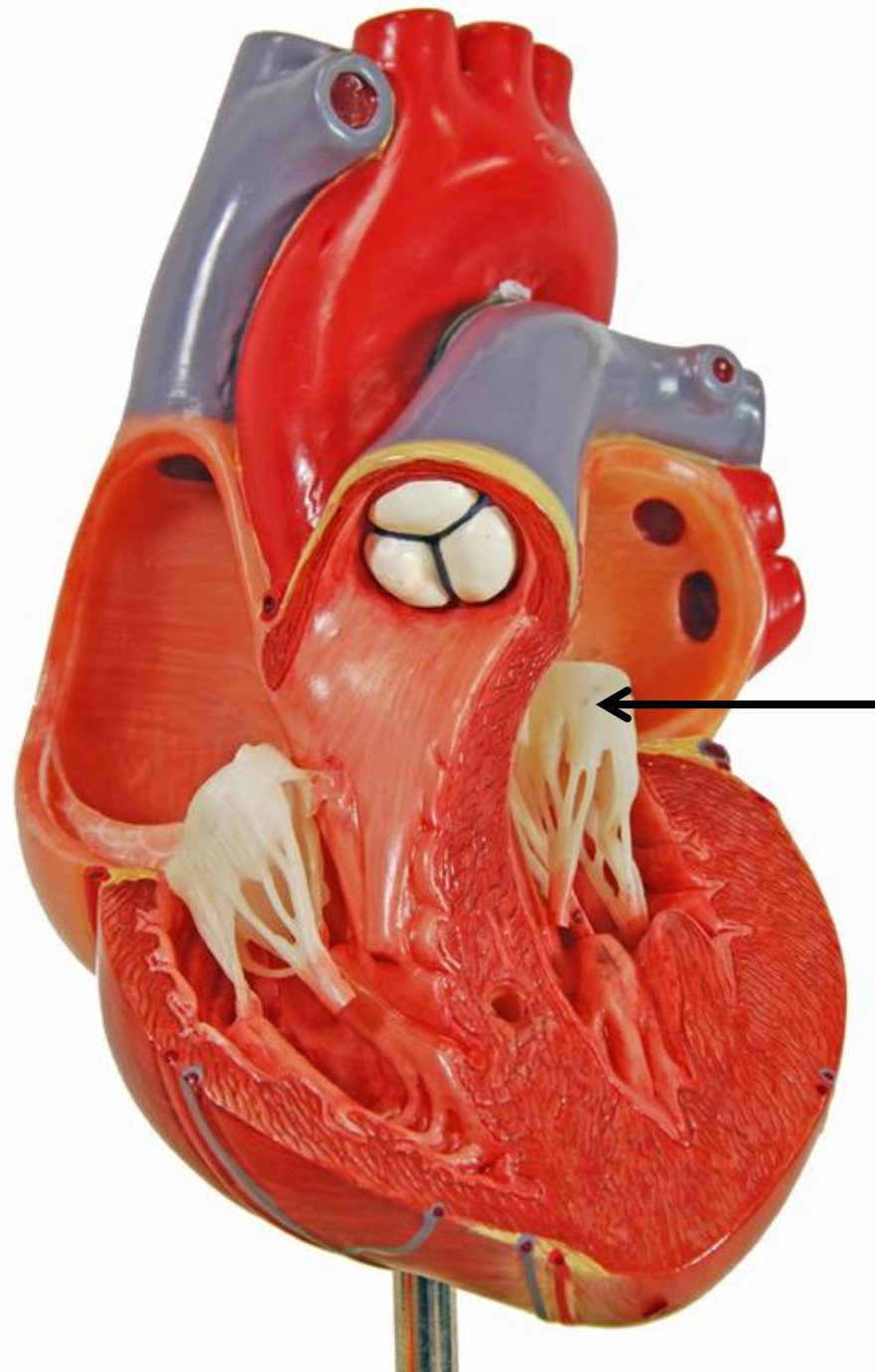




\*scroll to the next slide  
to check your answer

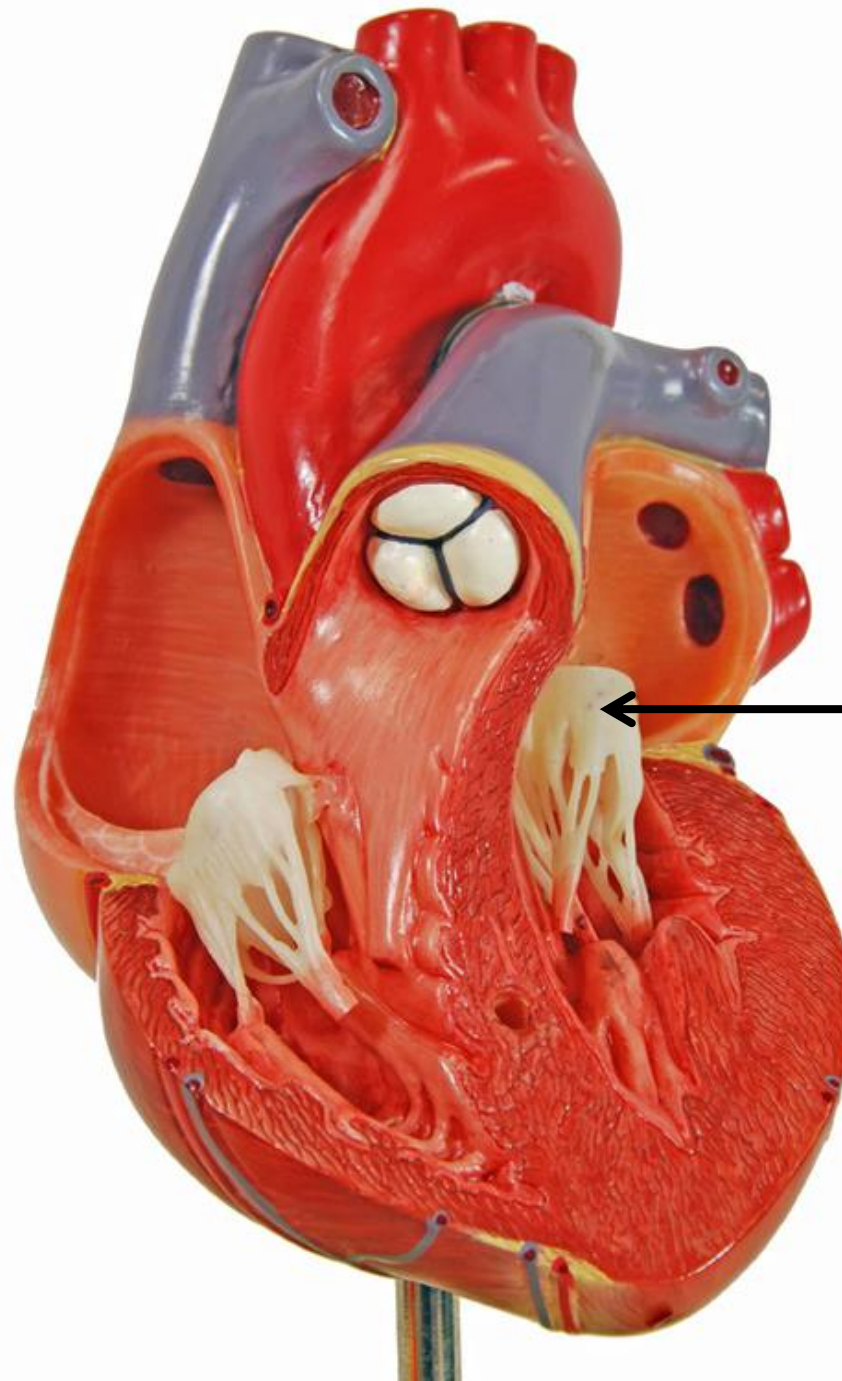


Interventricular septum



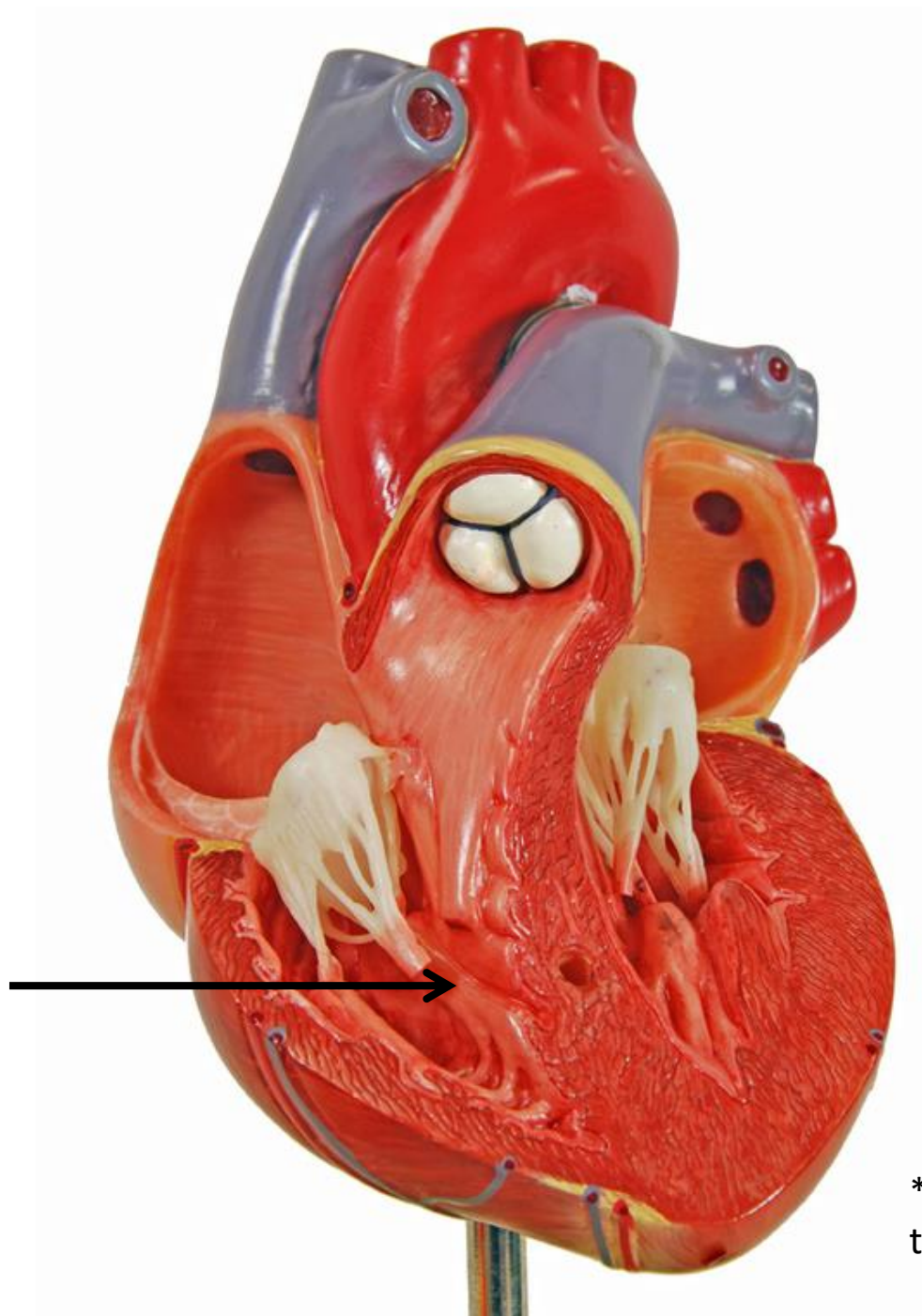
\*scroll to the next slide  
to check your answer





Bicuspid (mitral) valve

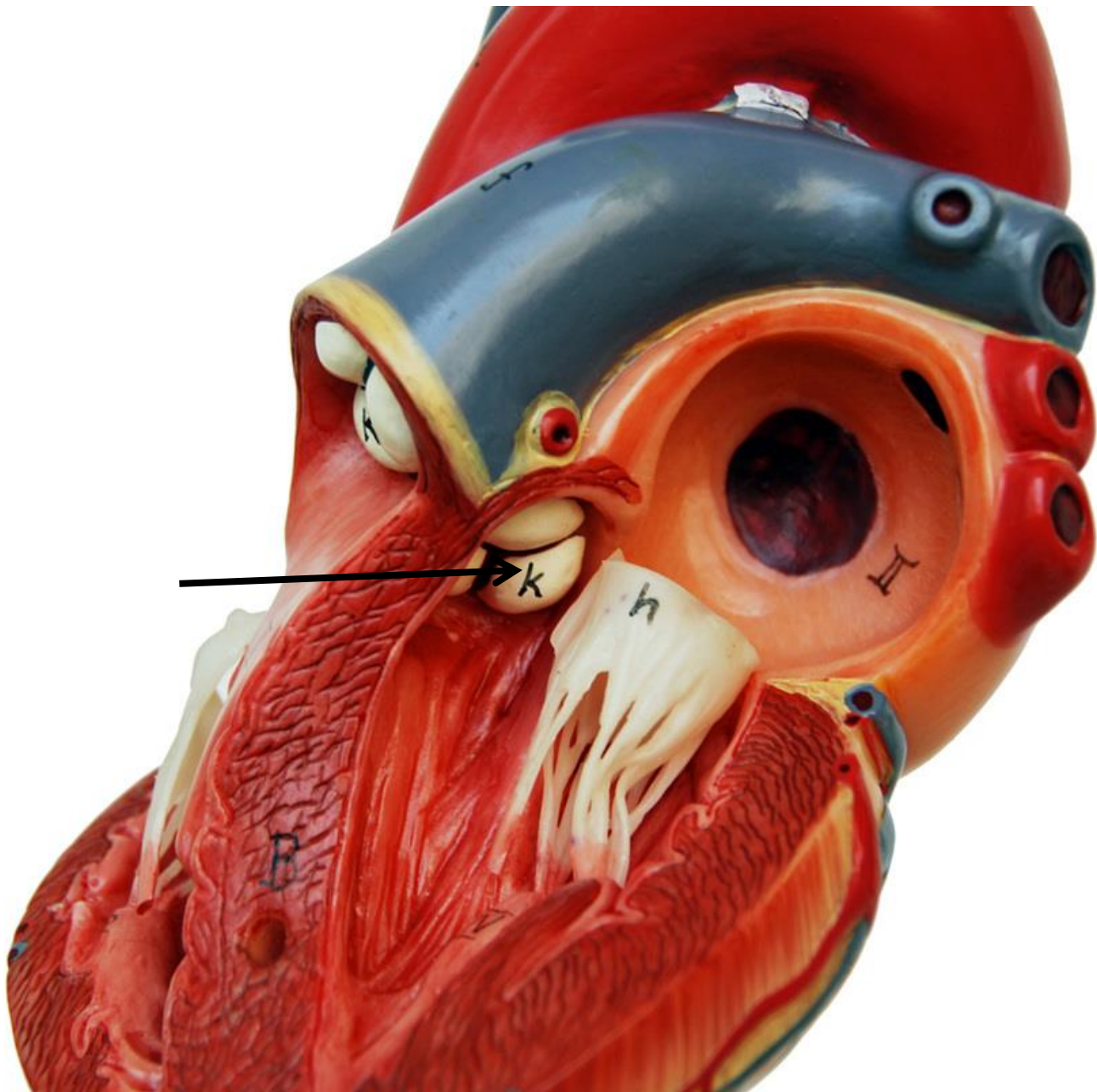




\*scroll to the next slide  
to check your answer

Papillary muscle

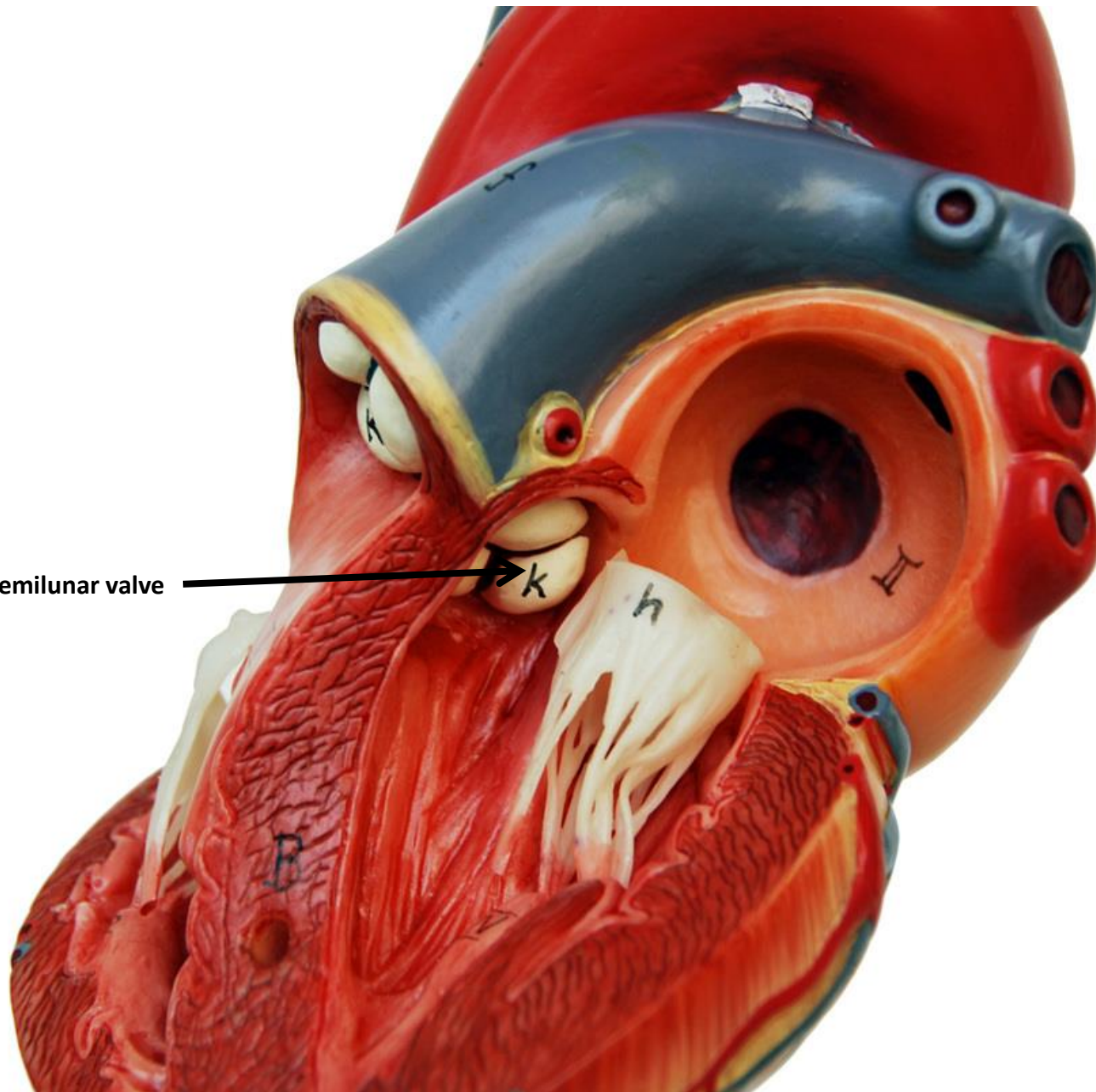




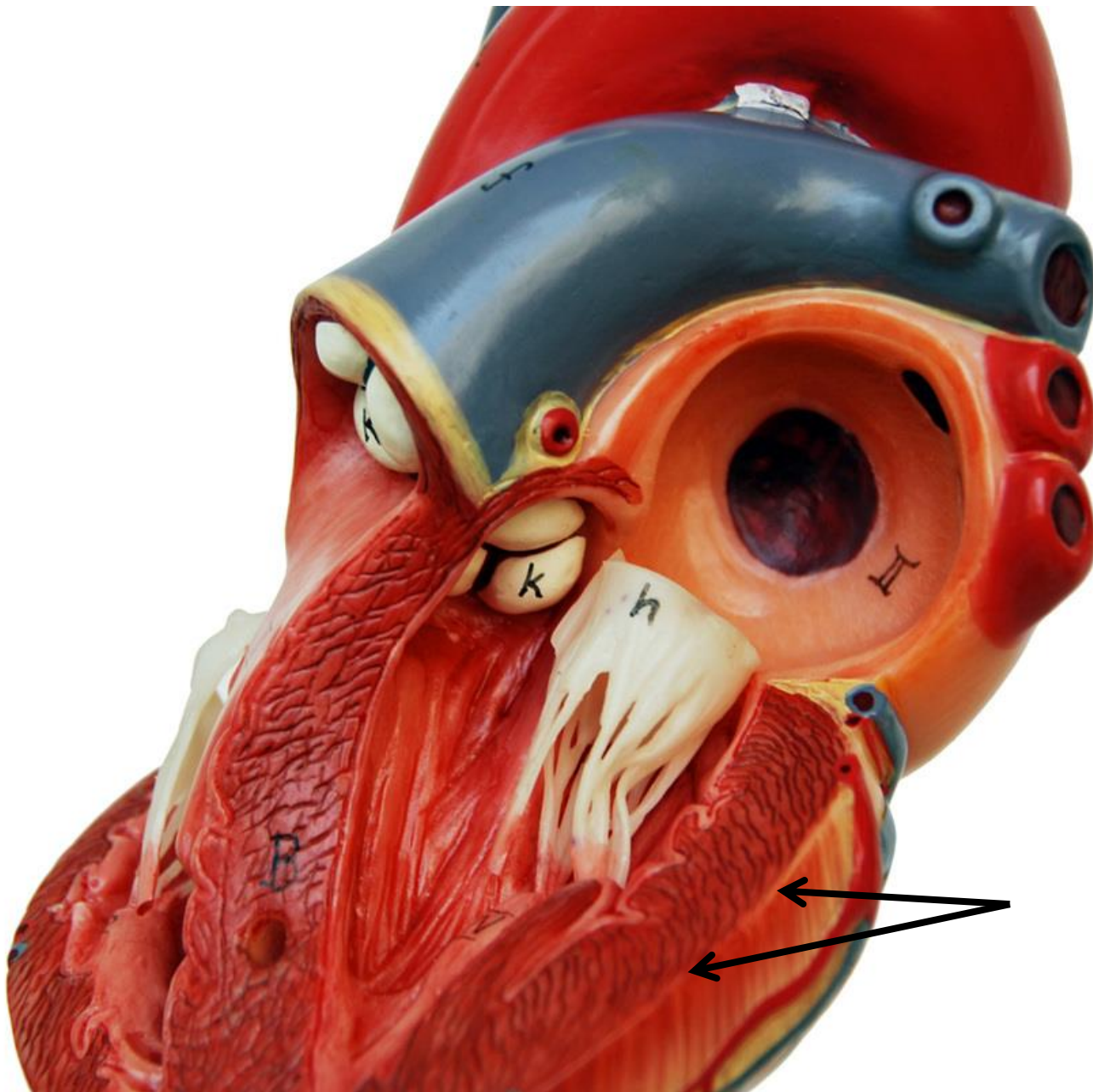
\*scroll to the next slide to check your answer



Aortic semilunar valve







\*scroll to the next slide to check your answer

