

Sheep Brain Practice Exam #1

Name the following structures indicated by the arrows.

Scroll to the next slide to see the answer.

*For best results on these practice exams, write your answers on paper before scrolling to see the correct answer. Try to answer within a minute (remember your lab exams will be timed) and make sure to check your spelling!

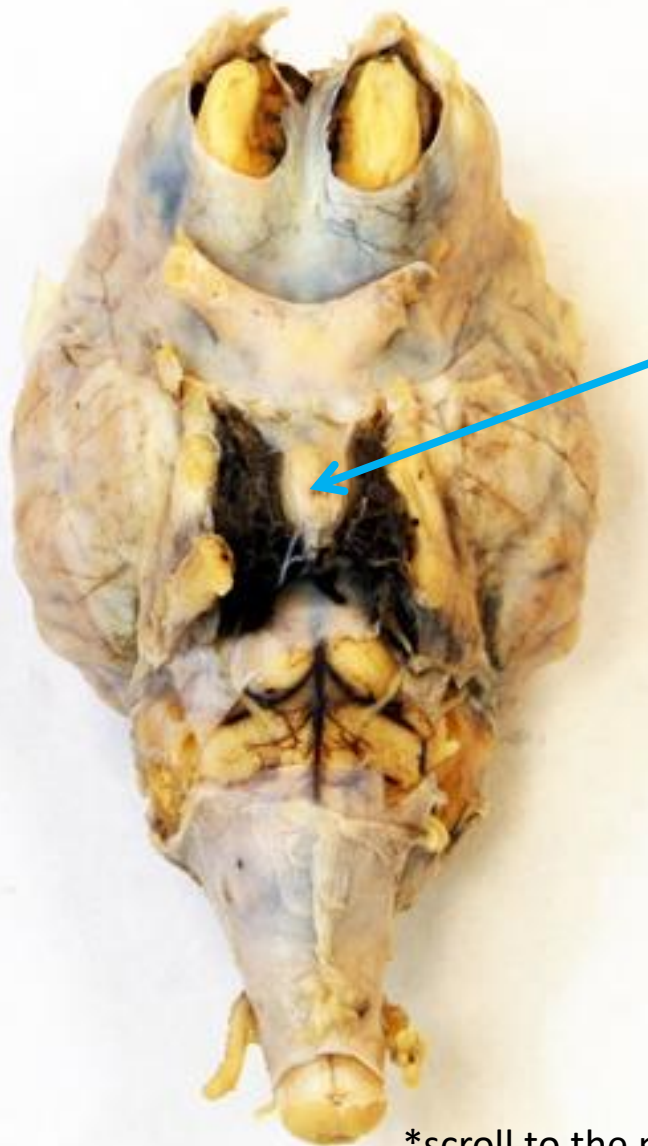
*note: not every structure you are required to know will be on this practice exercise so make sure you review the checklist of structures (p. 137 in your lab manual) when preparing for your lab exam



*scroll to the next slide to check your answer



Dura mater



*scroll to the next slide to check your answer



Pituitary gland



*scroll to the next slide to
check your answer

Olfactory bulb

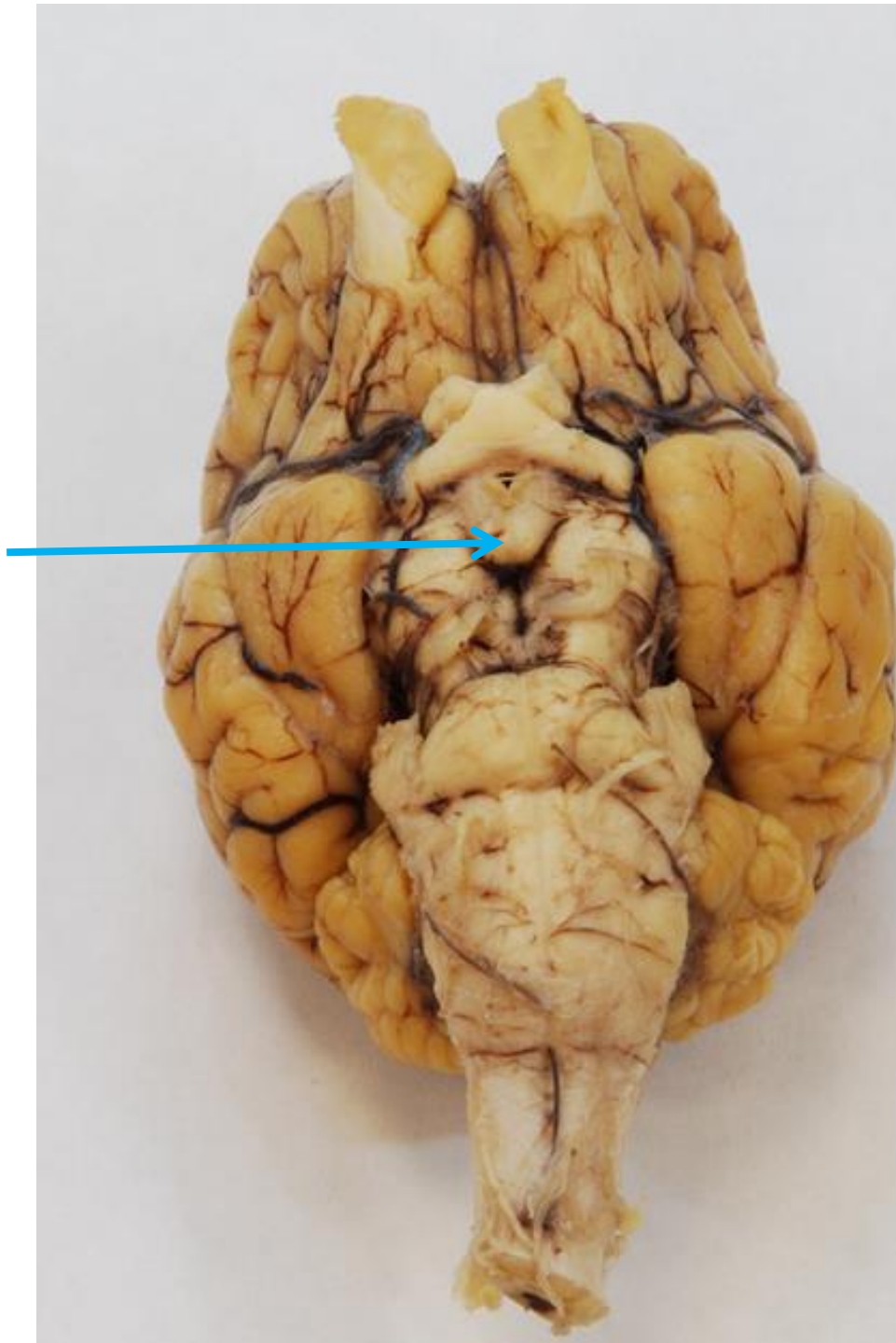




*scroll to the next
slide to check your
answer

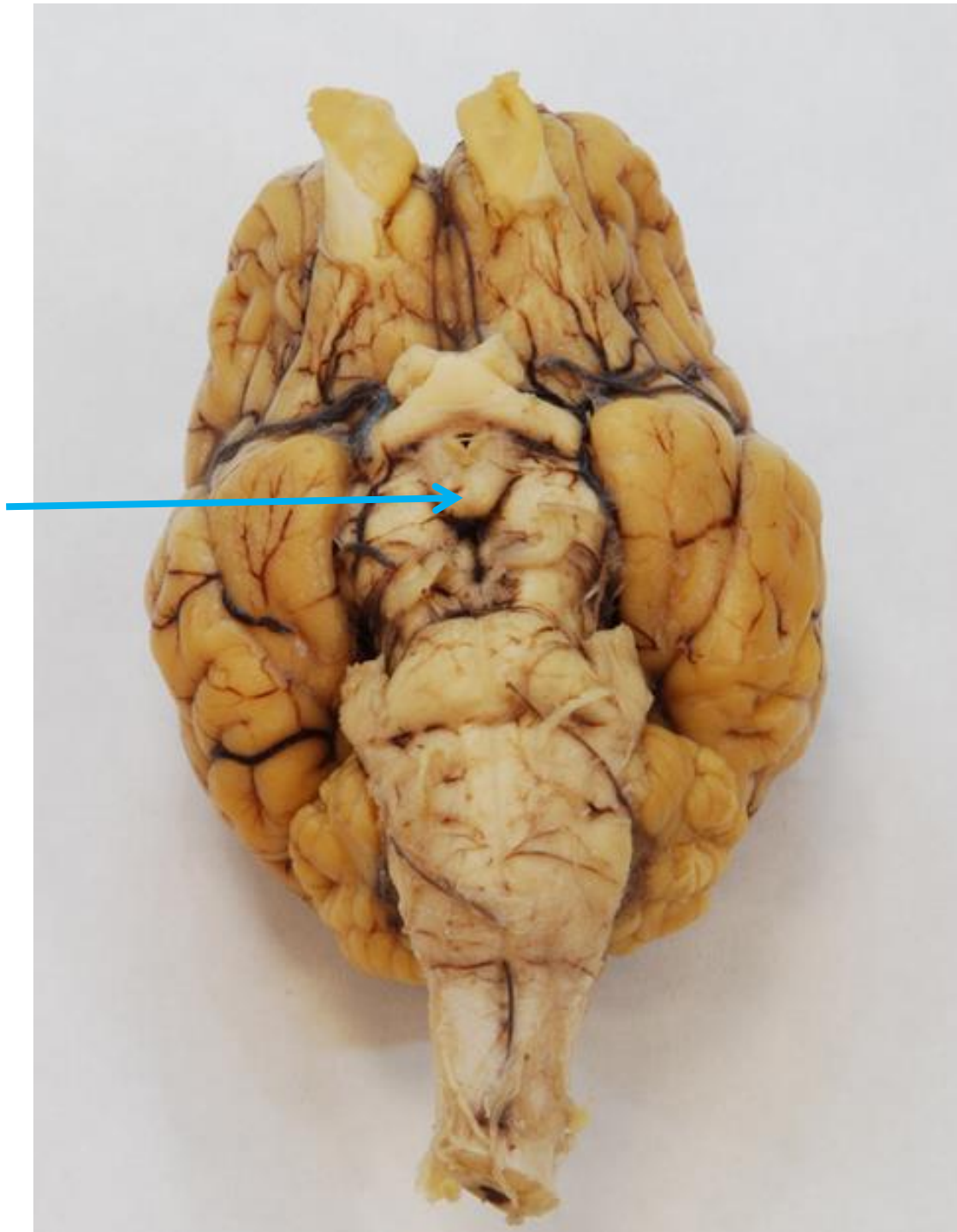


Trigeminal nerve (CN V)



*scroll to the next slide
to check your answer

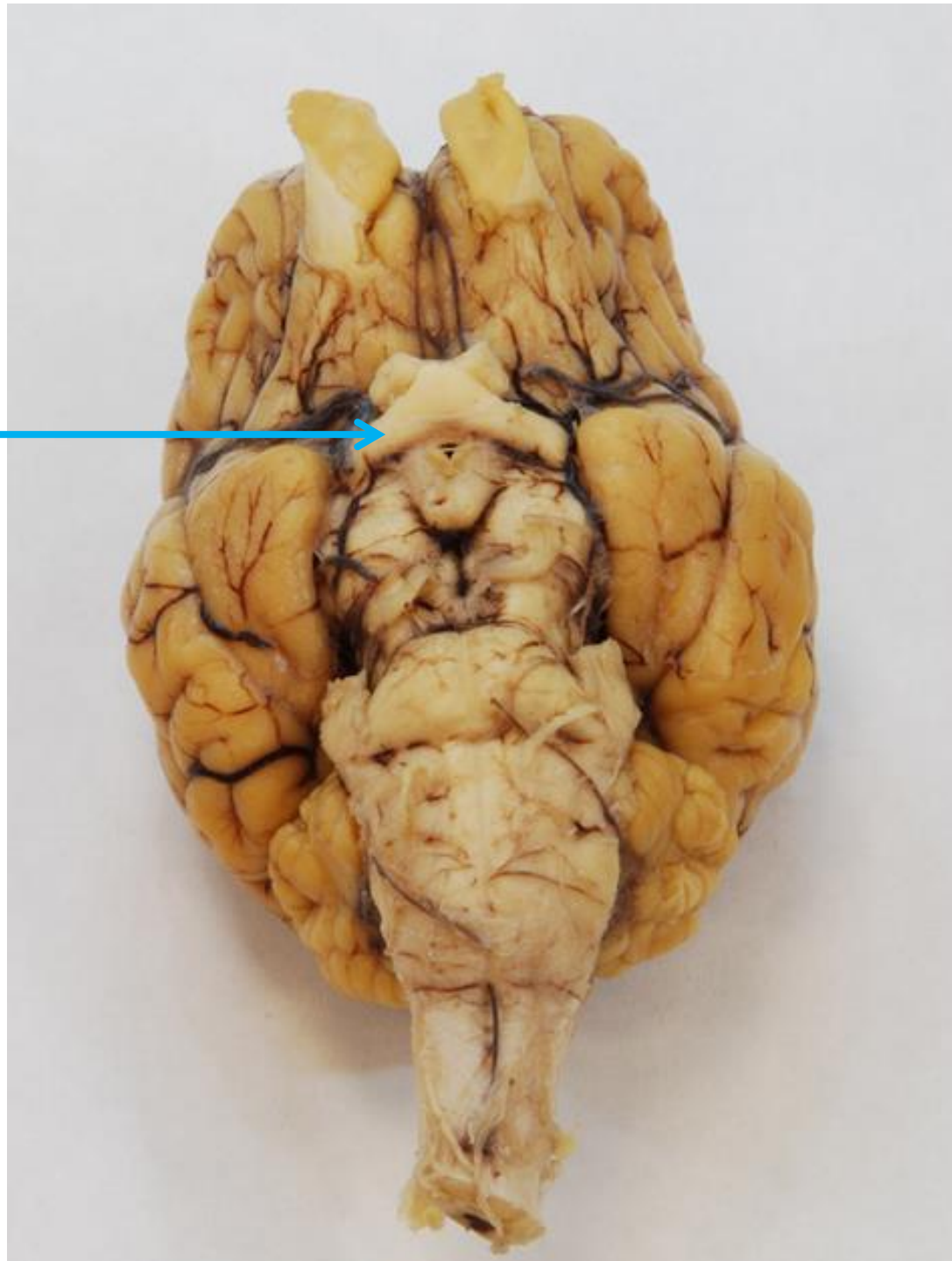
Mamillary body





*scroll to the next
slide to check your
answer

Optic tract





*scroll to the next slide to
check your answer



Spinal cord



*scroll to the next slide to
check your answer

Longitudinal fissure

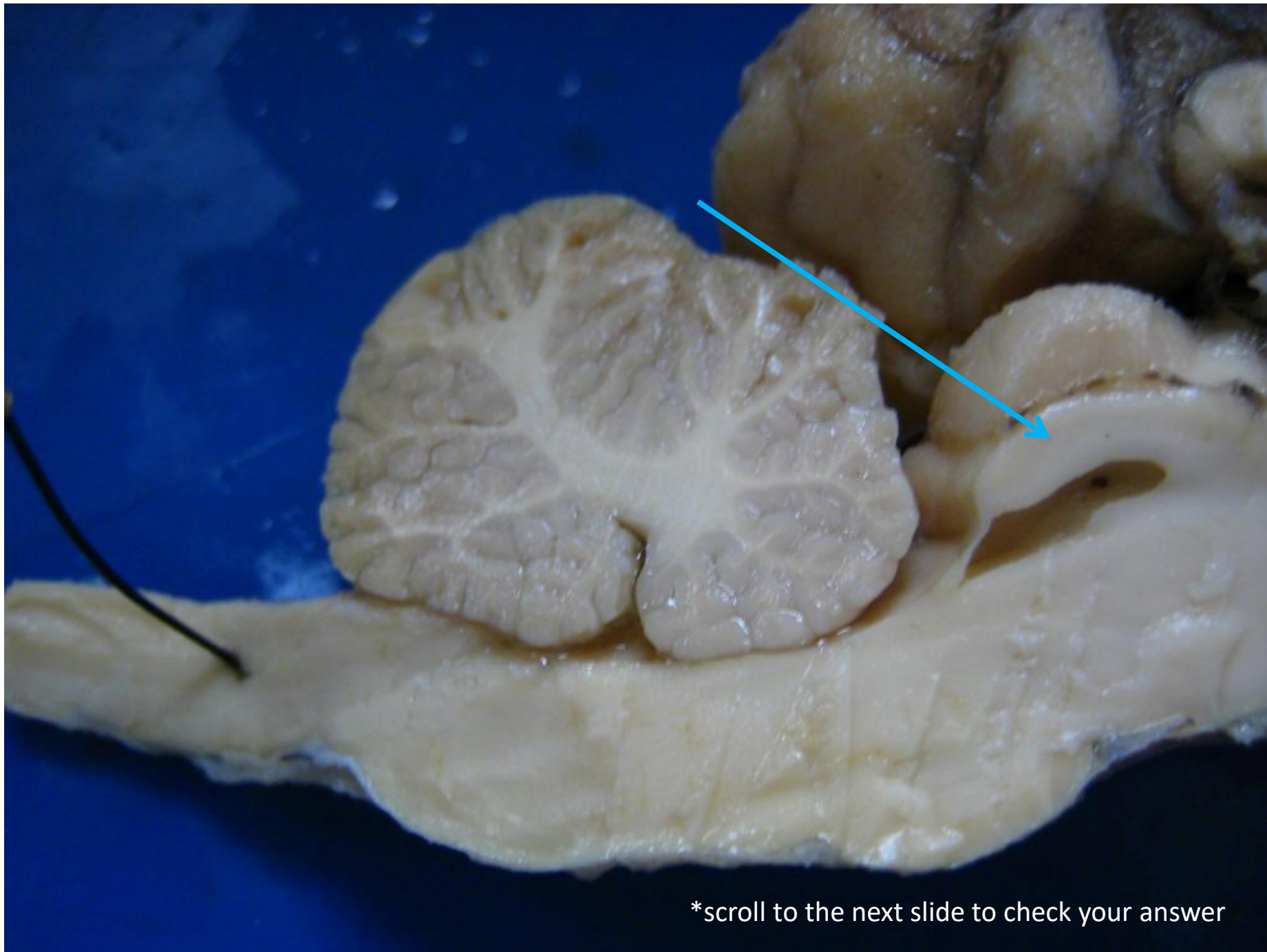




*scroll to the next slide to
check your answer

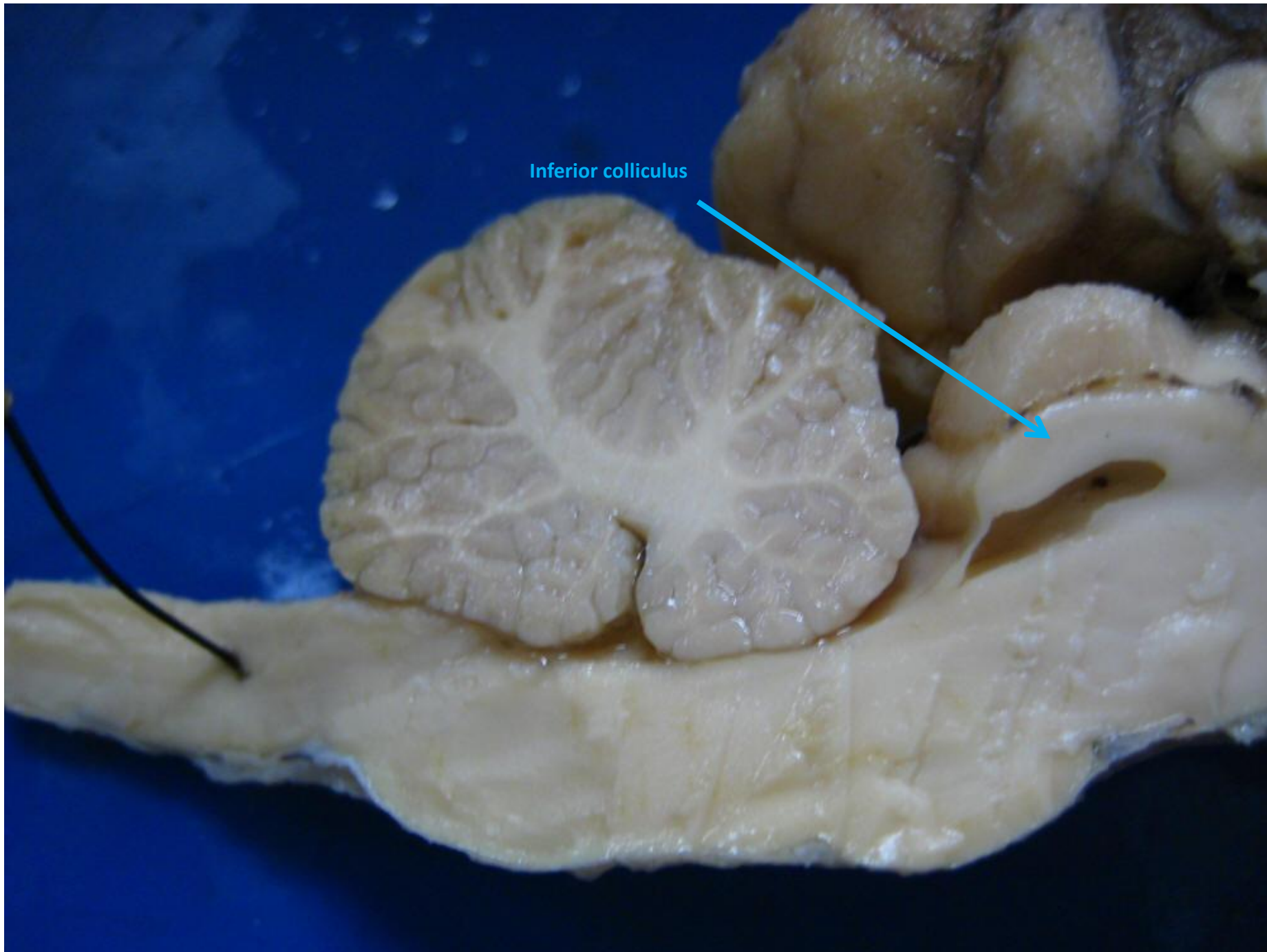
Superior colliculus

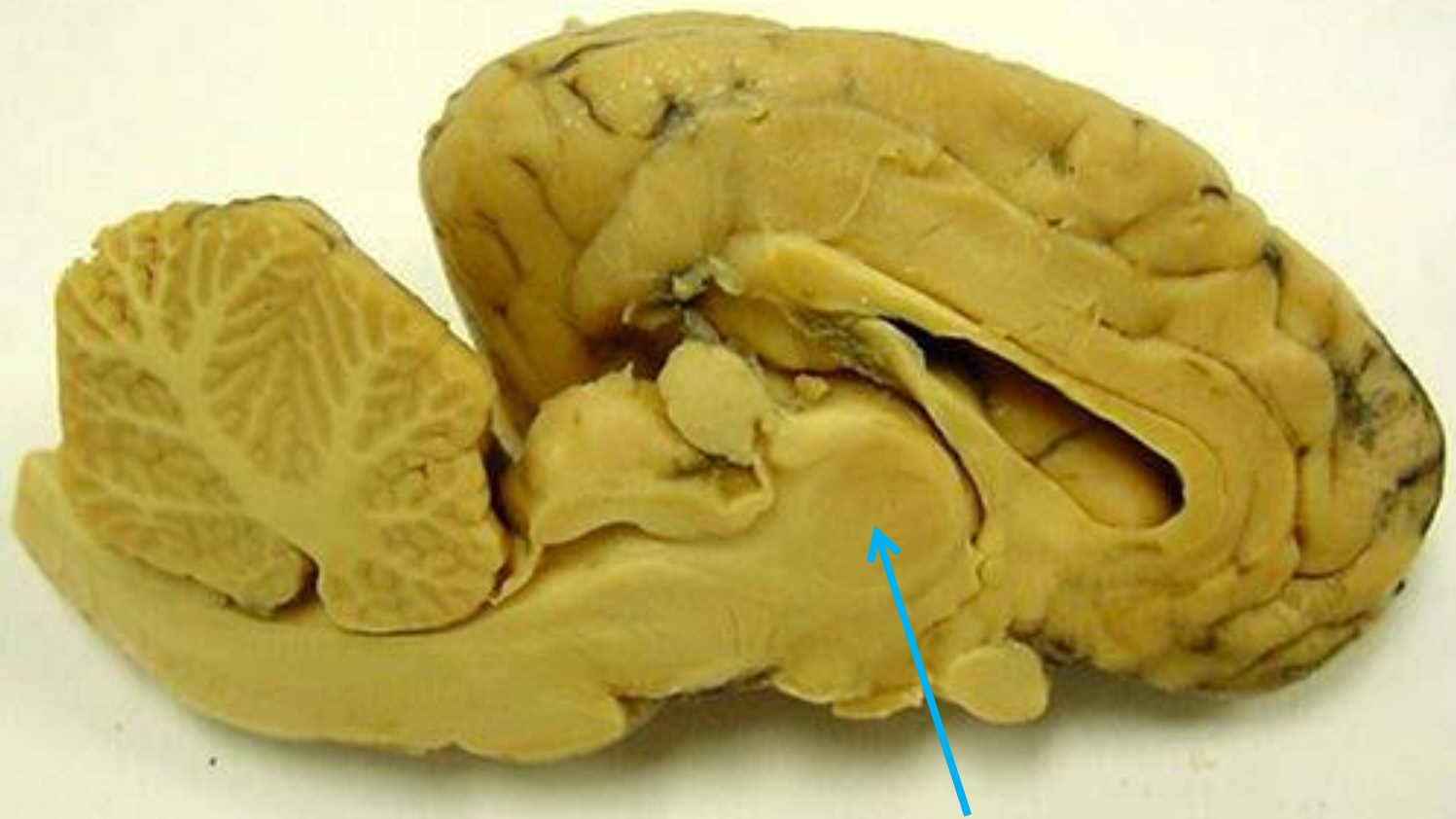




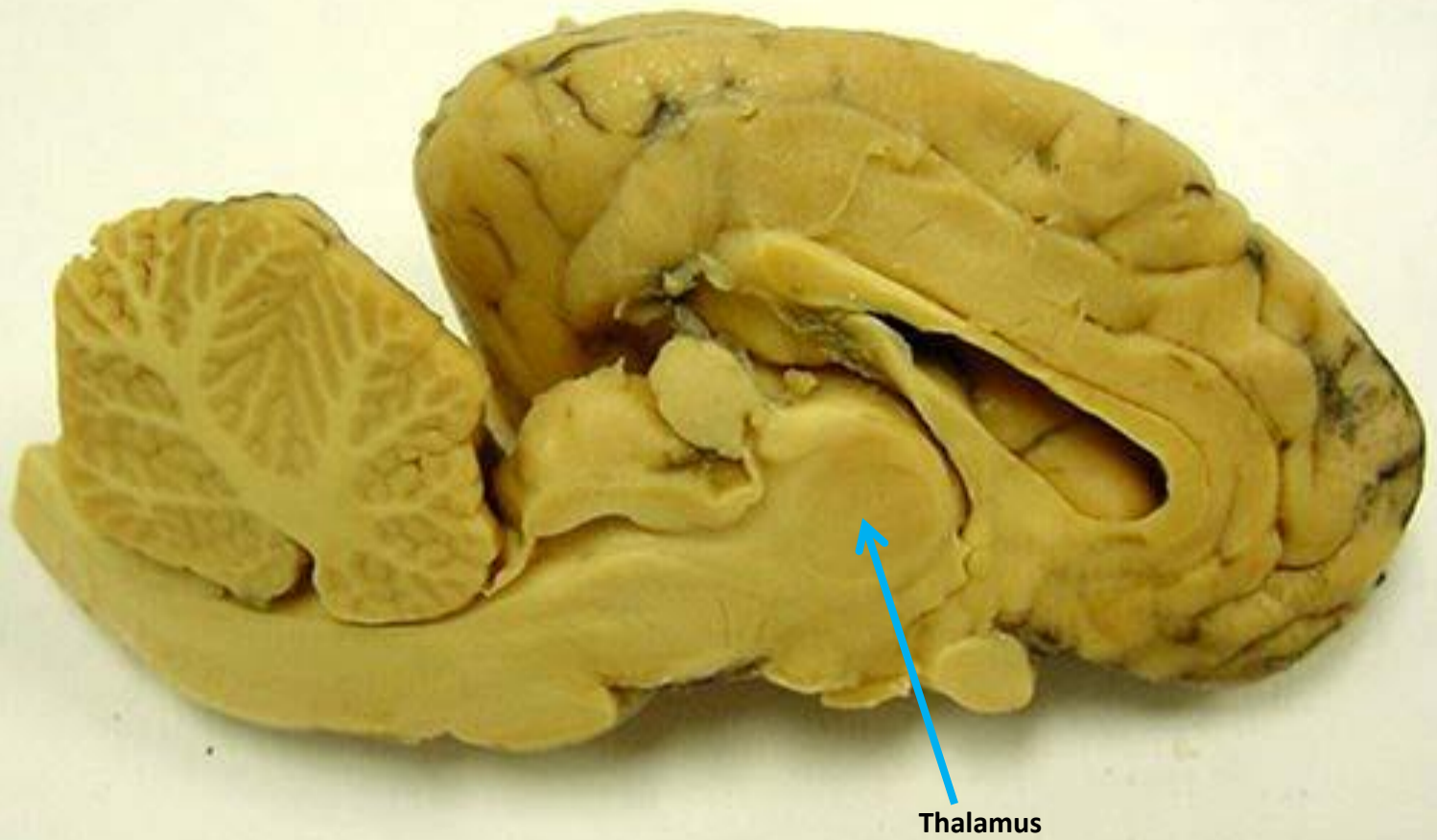
*scroll to the next slide to check your answer

Inferior colliculus





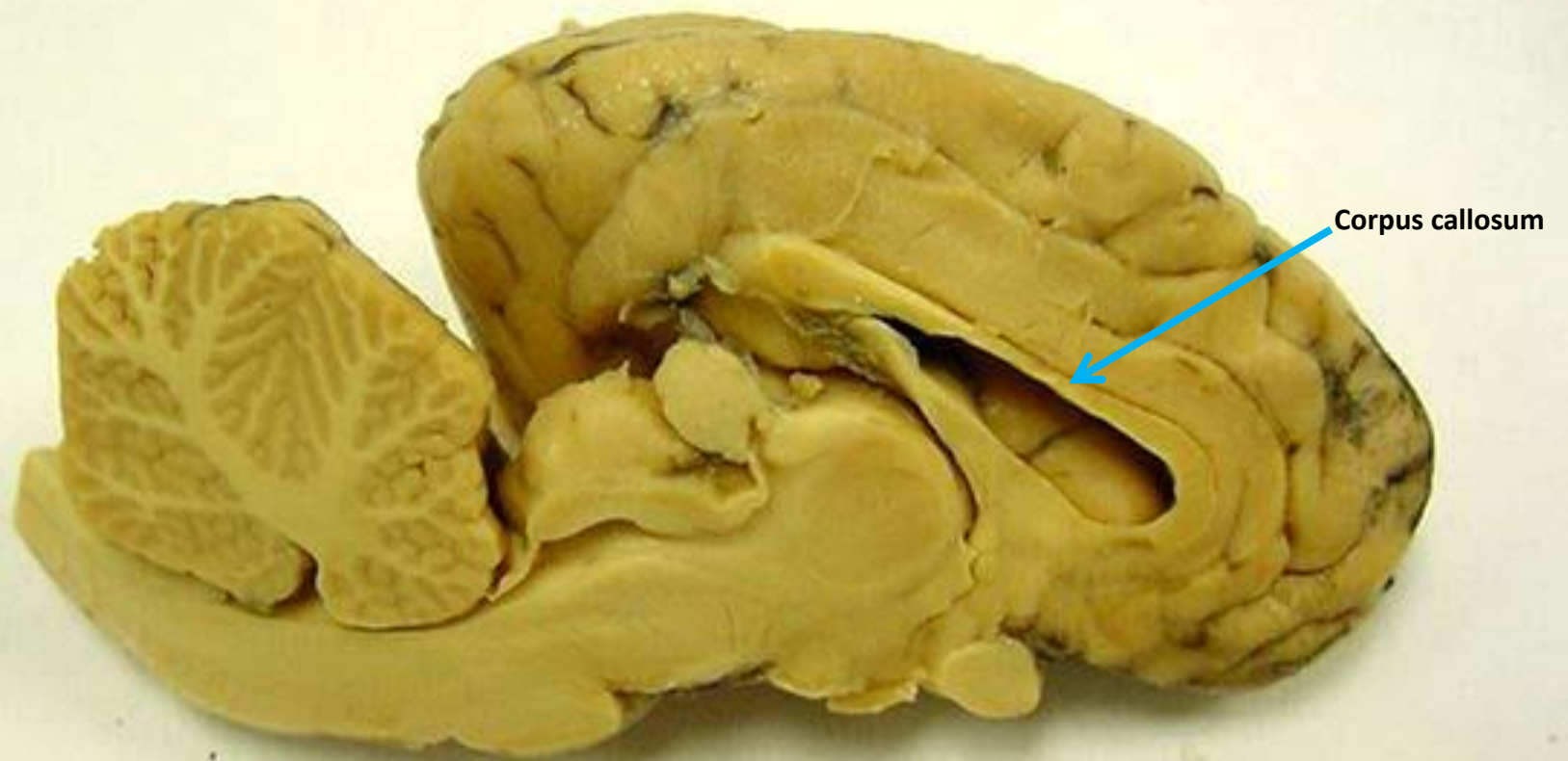
*scroll to the next slide to
check your answer

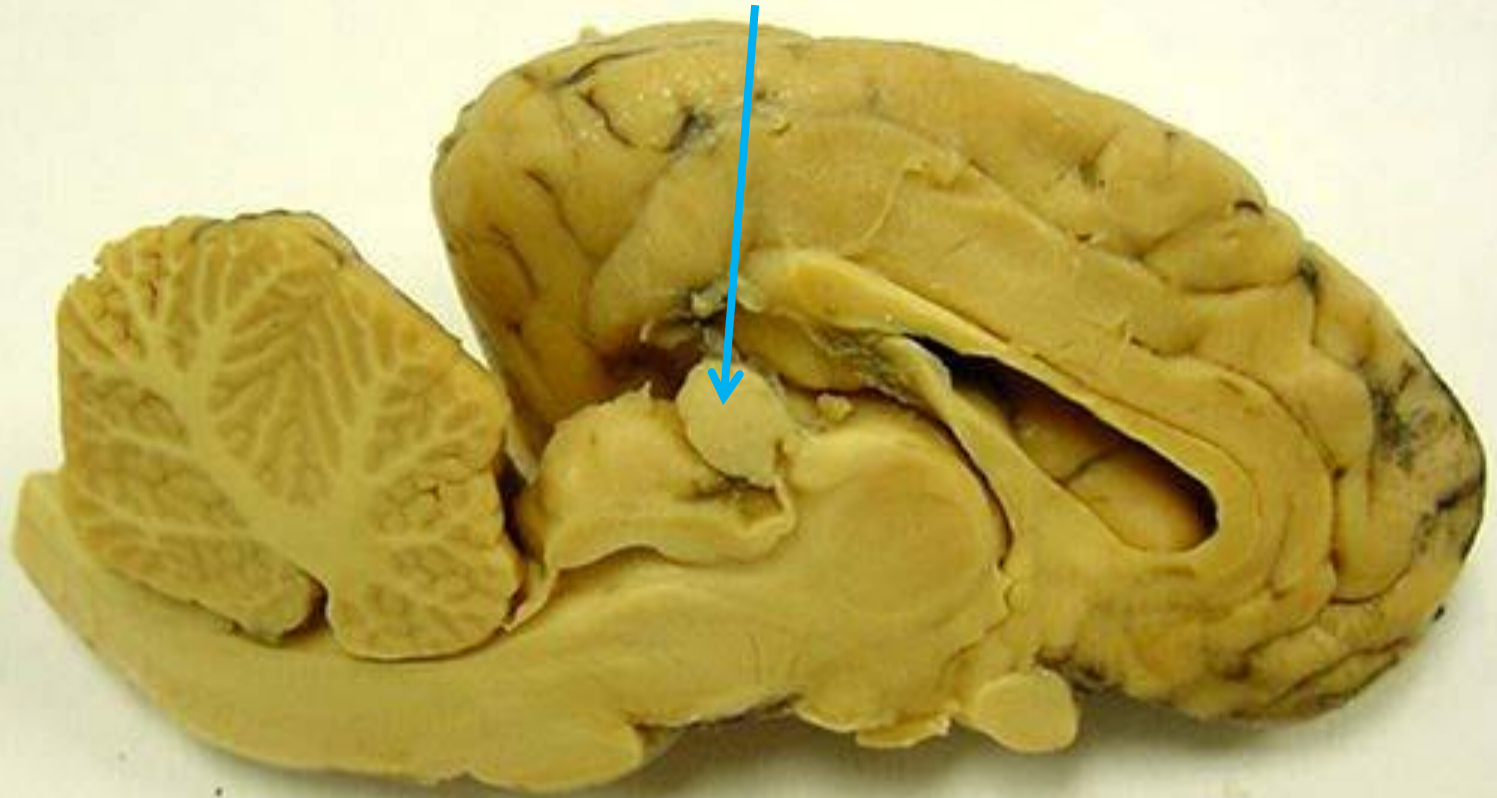


Thalamus

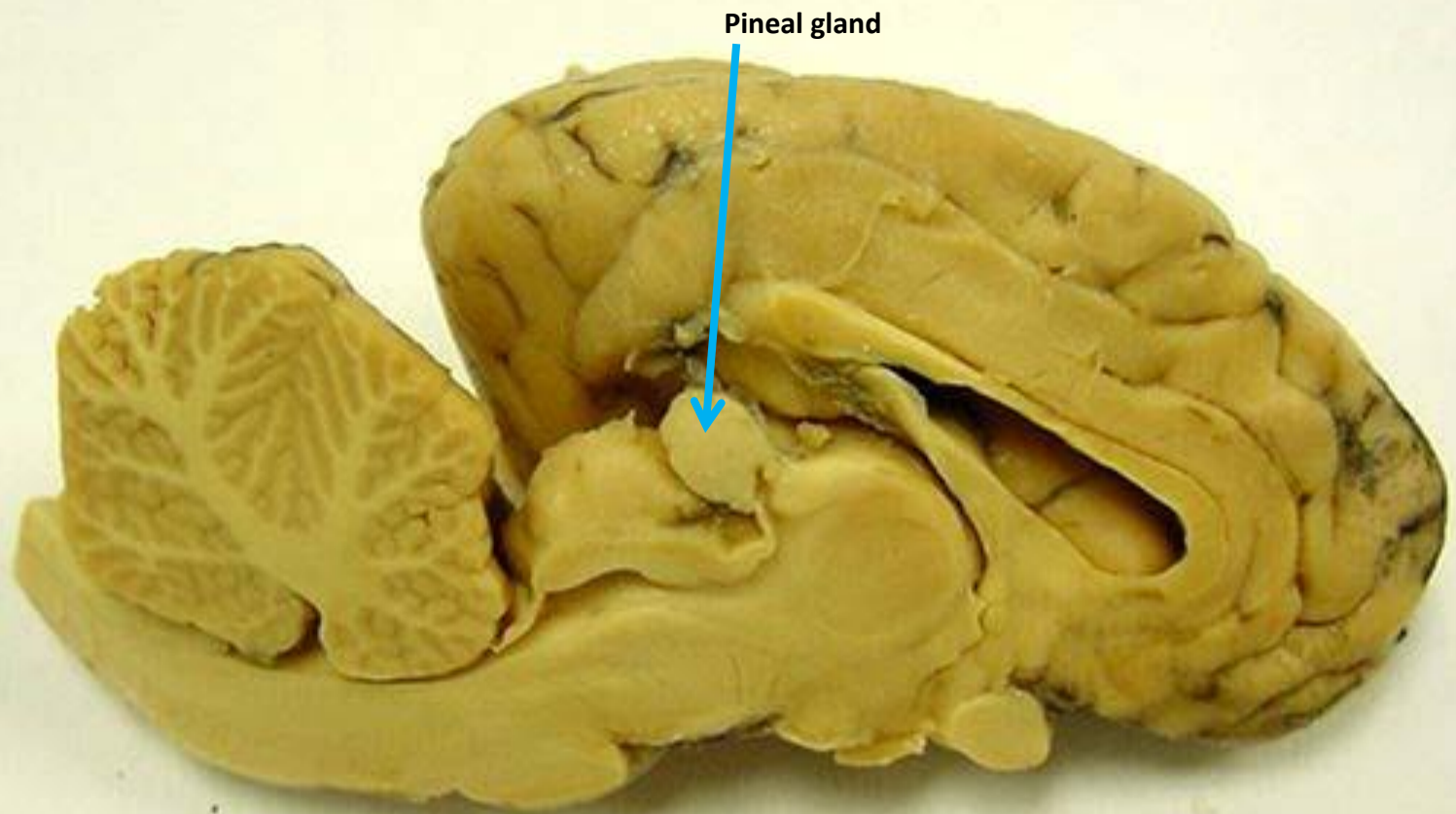


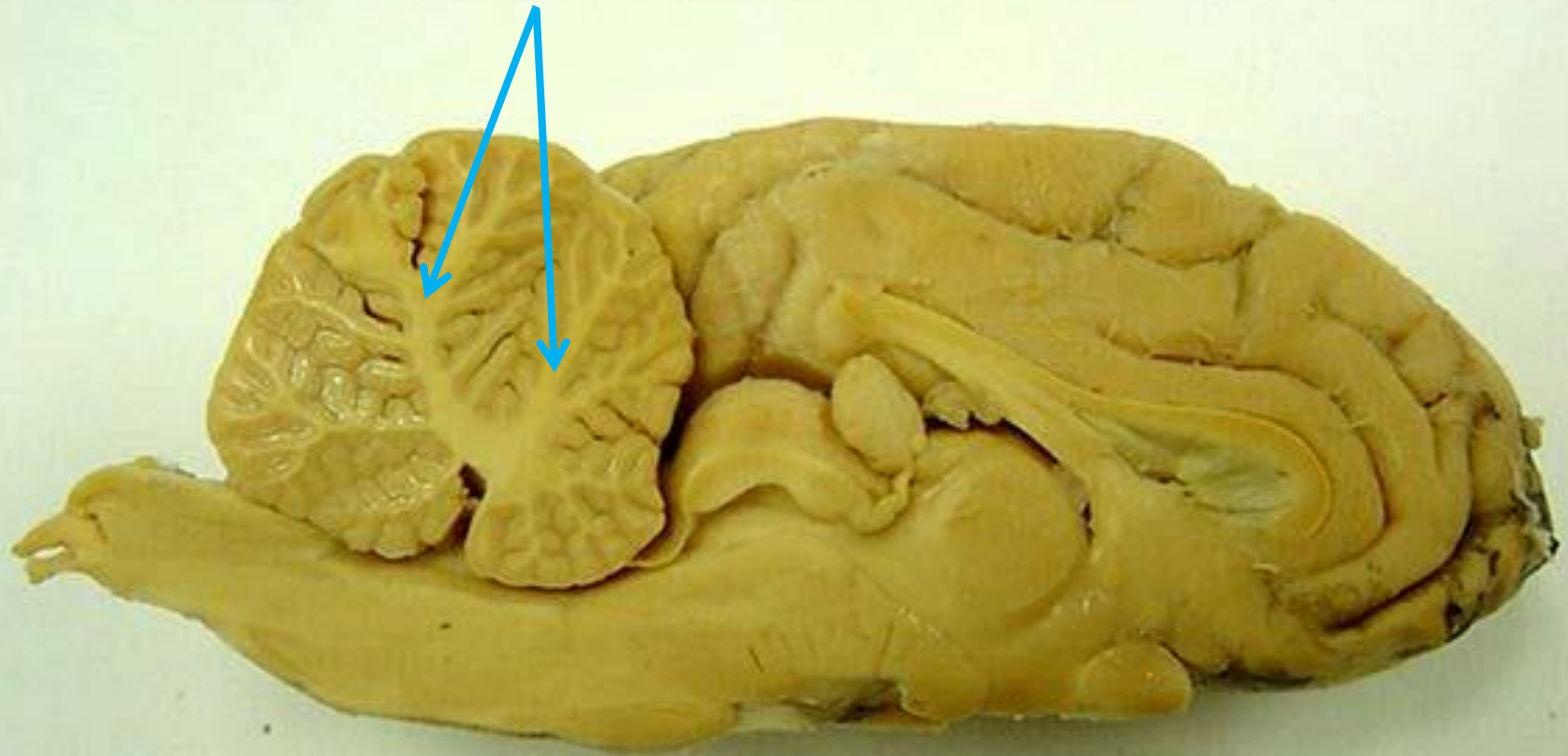
*scroll to the next slide to
check your answer





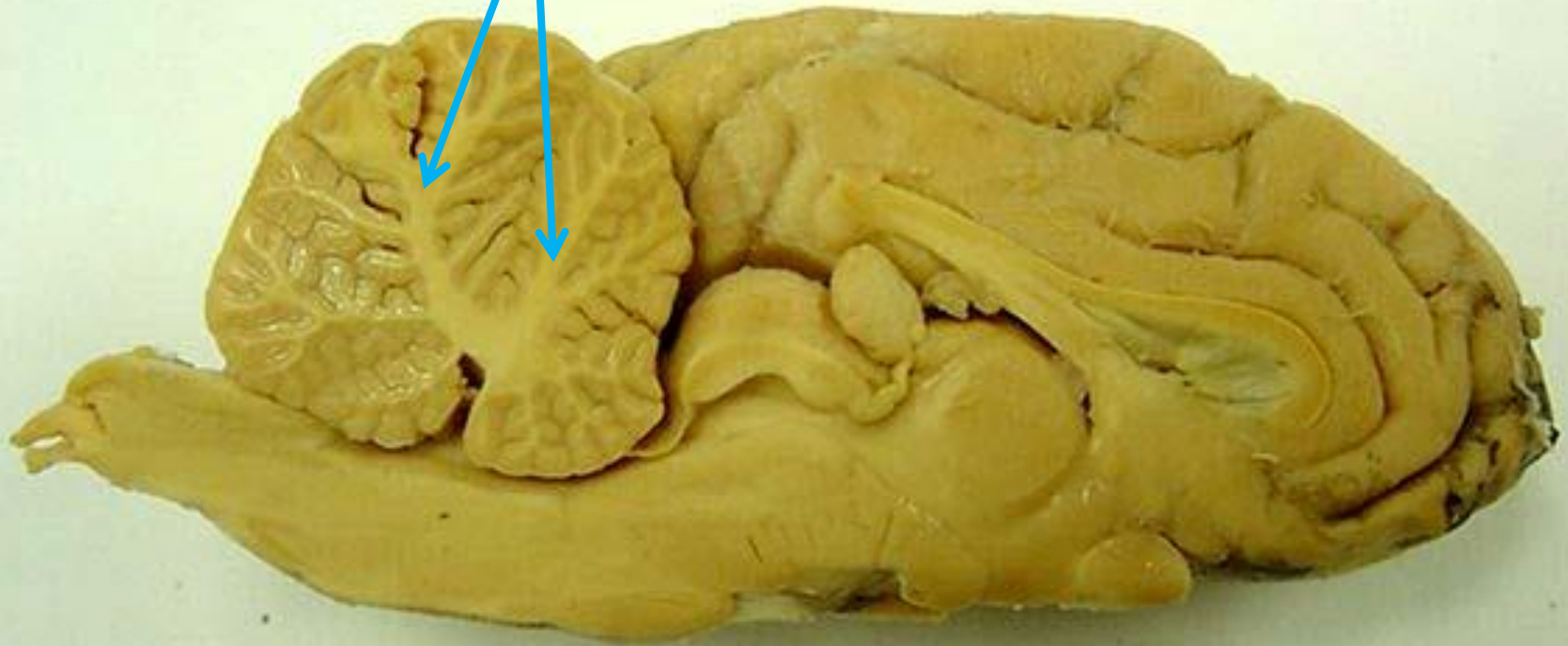
*scroll to the next slide to
check your answer

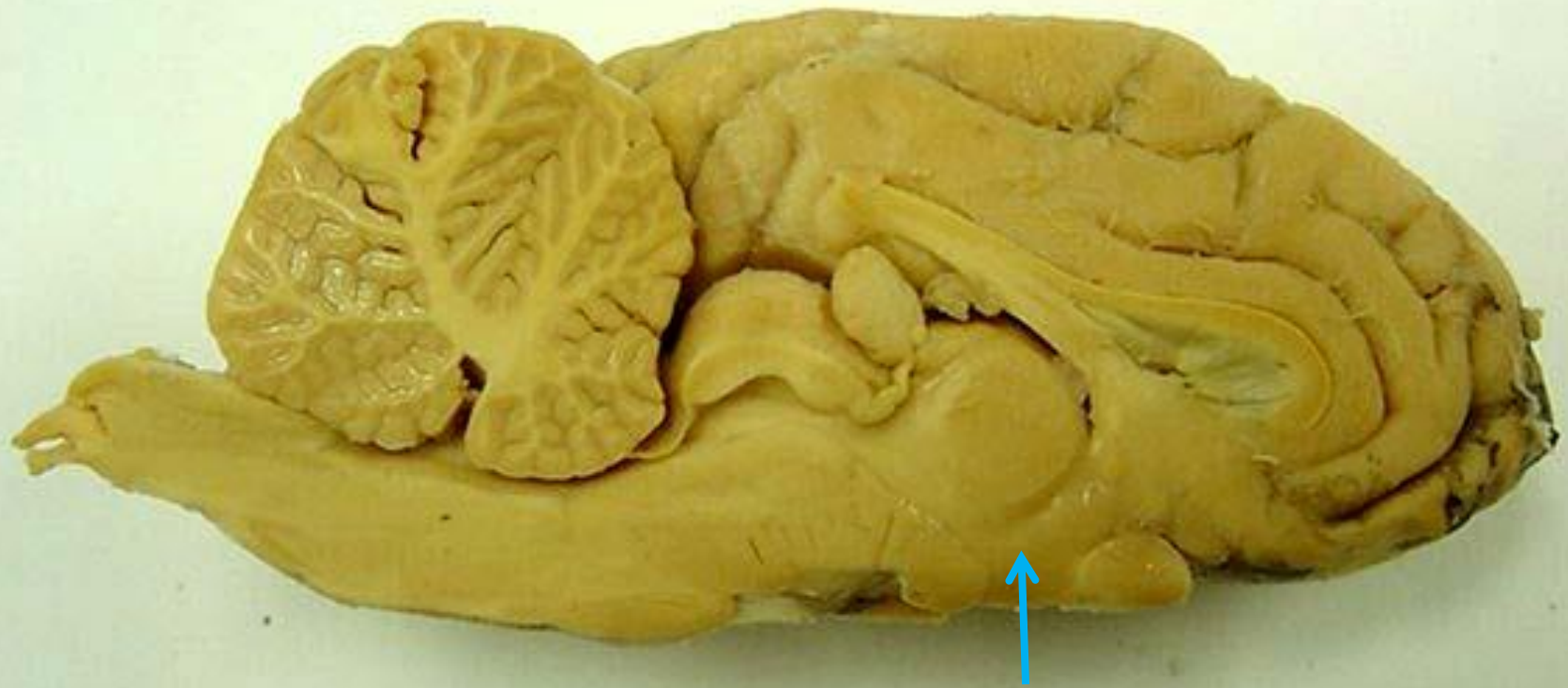




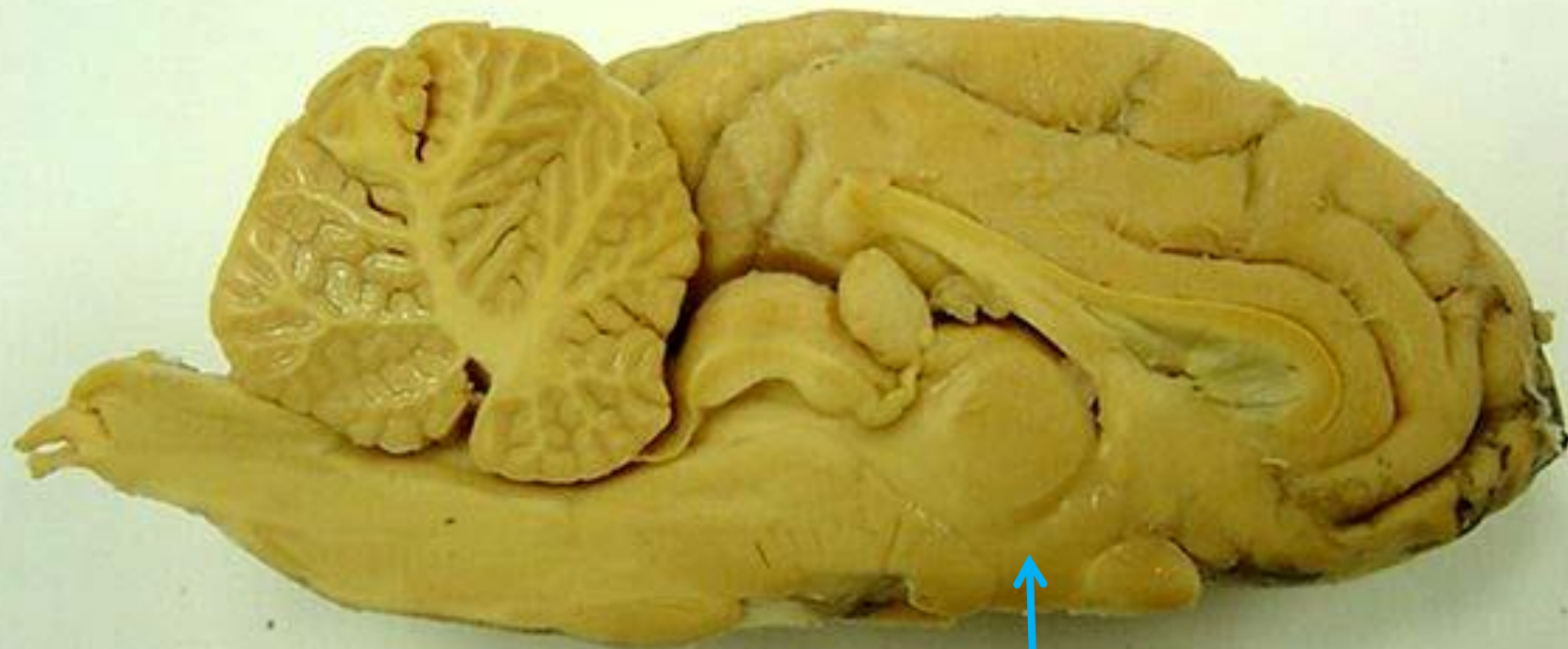
*scroll to the next slide to
check your answer

Arbor vitae of
cerebellum

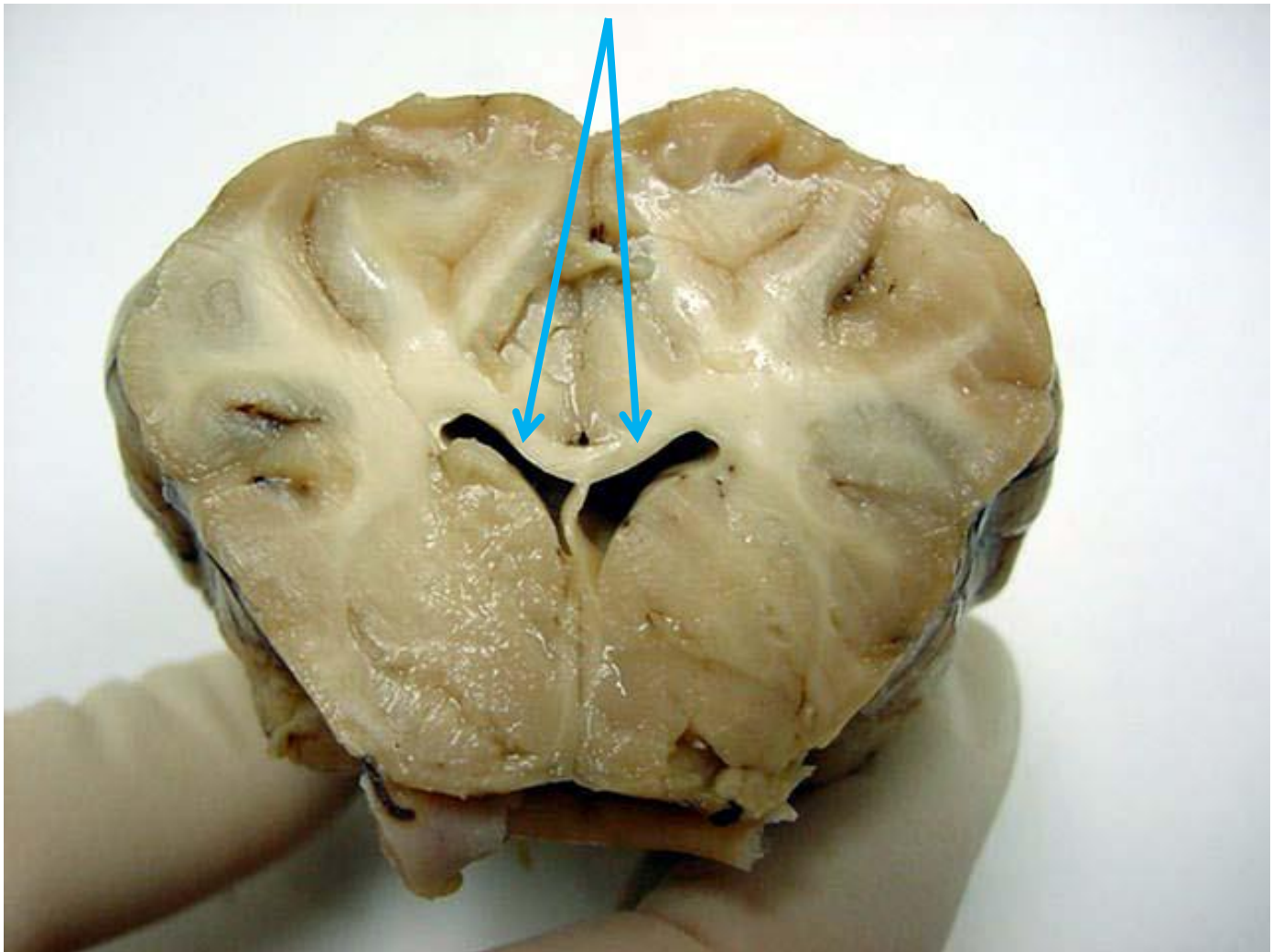




*scroll to the next slide to
check your answer

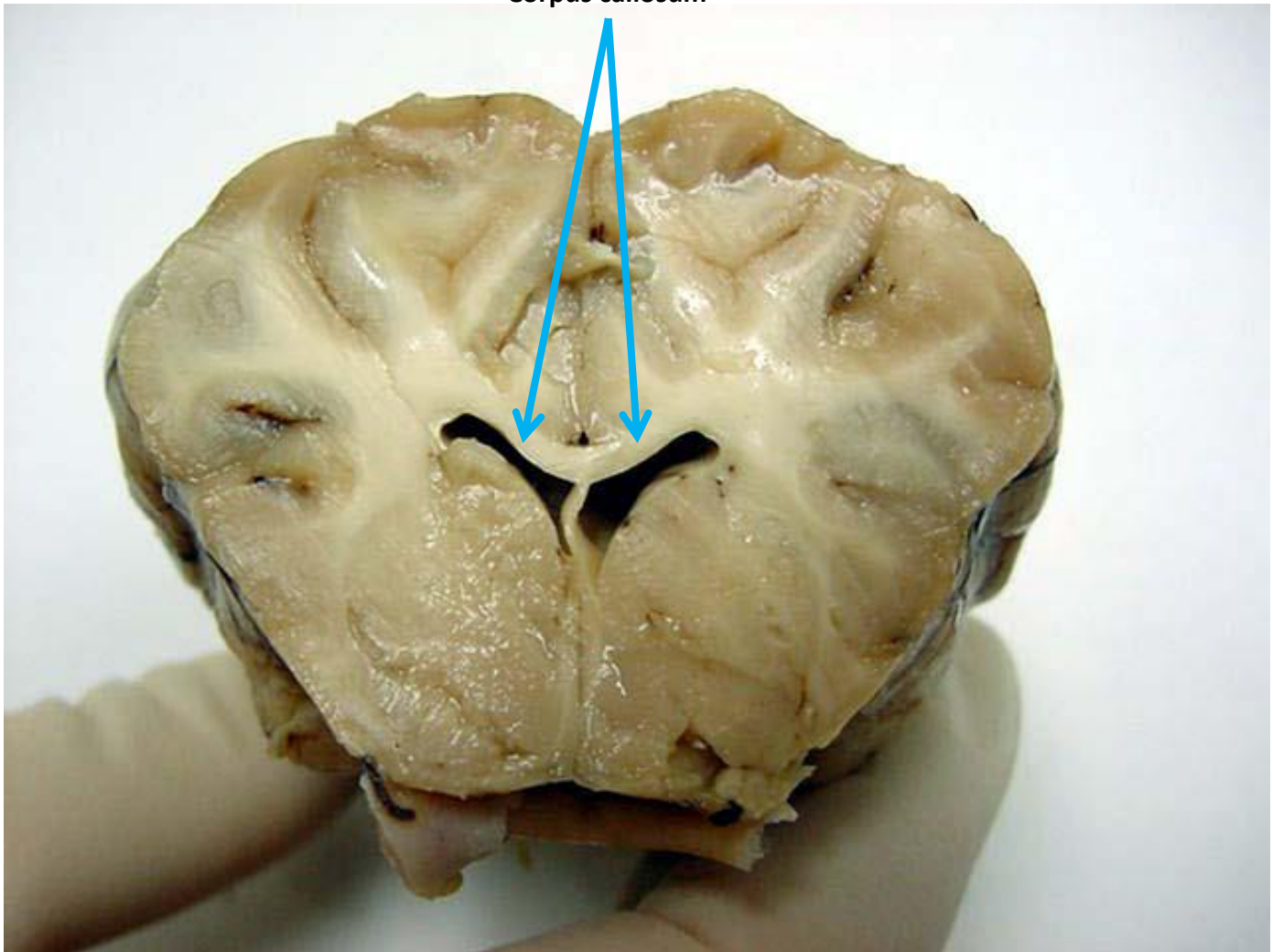


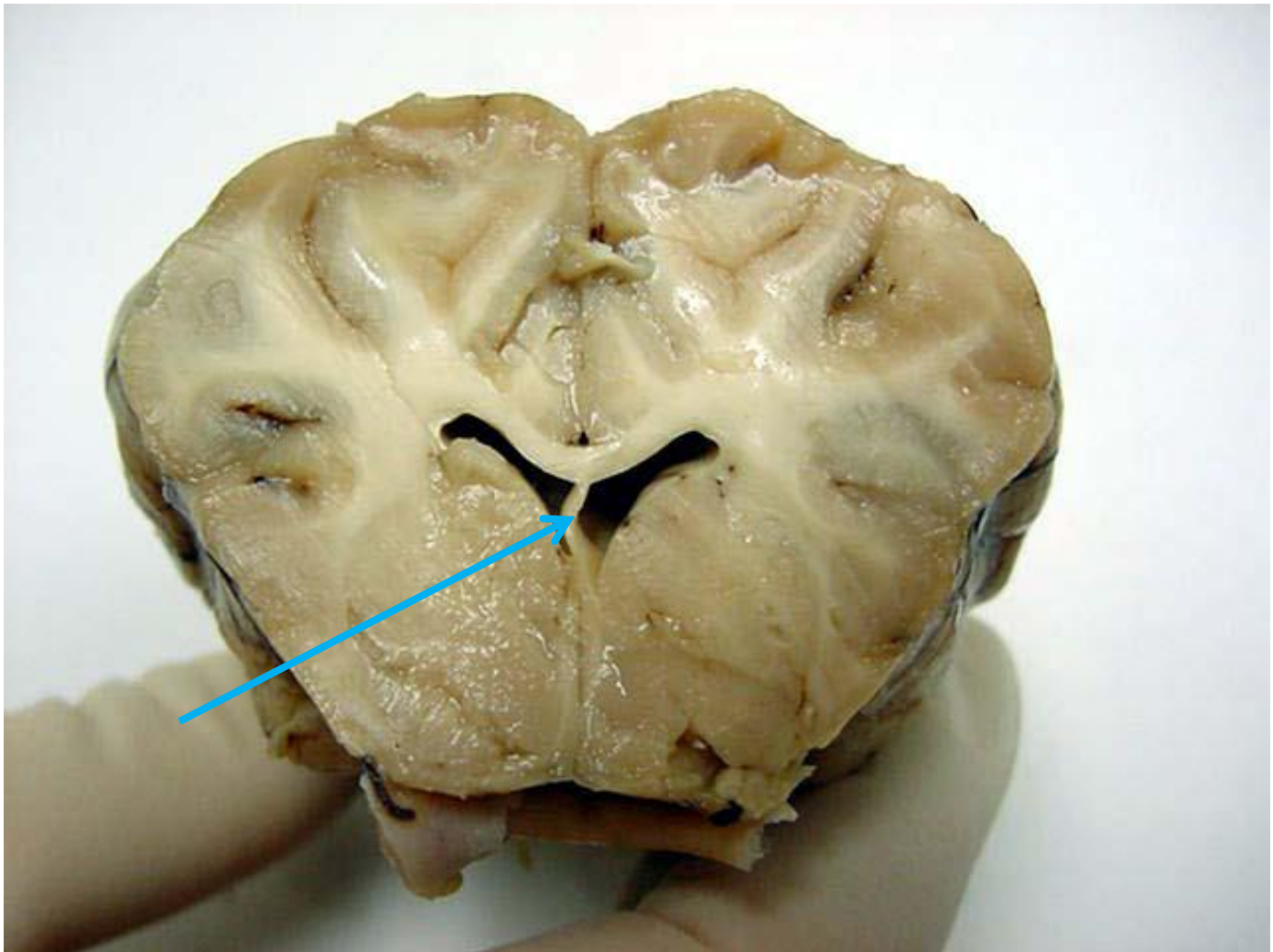
Hypothalamus



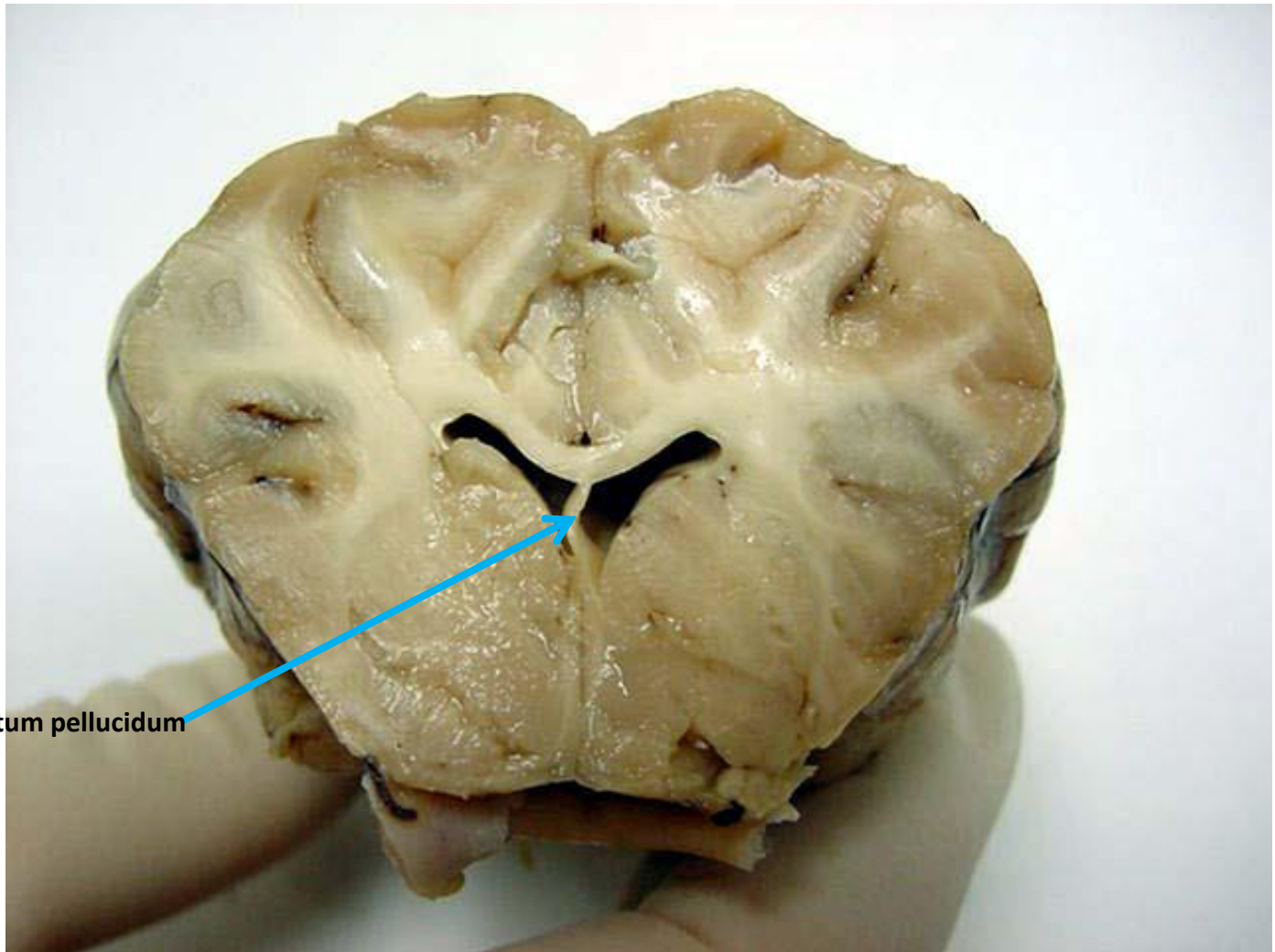
*scroll to the next slide to
check your answer

Corpus callosum

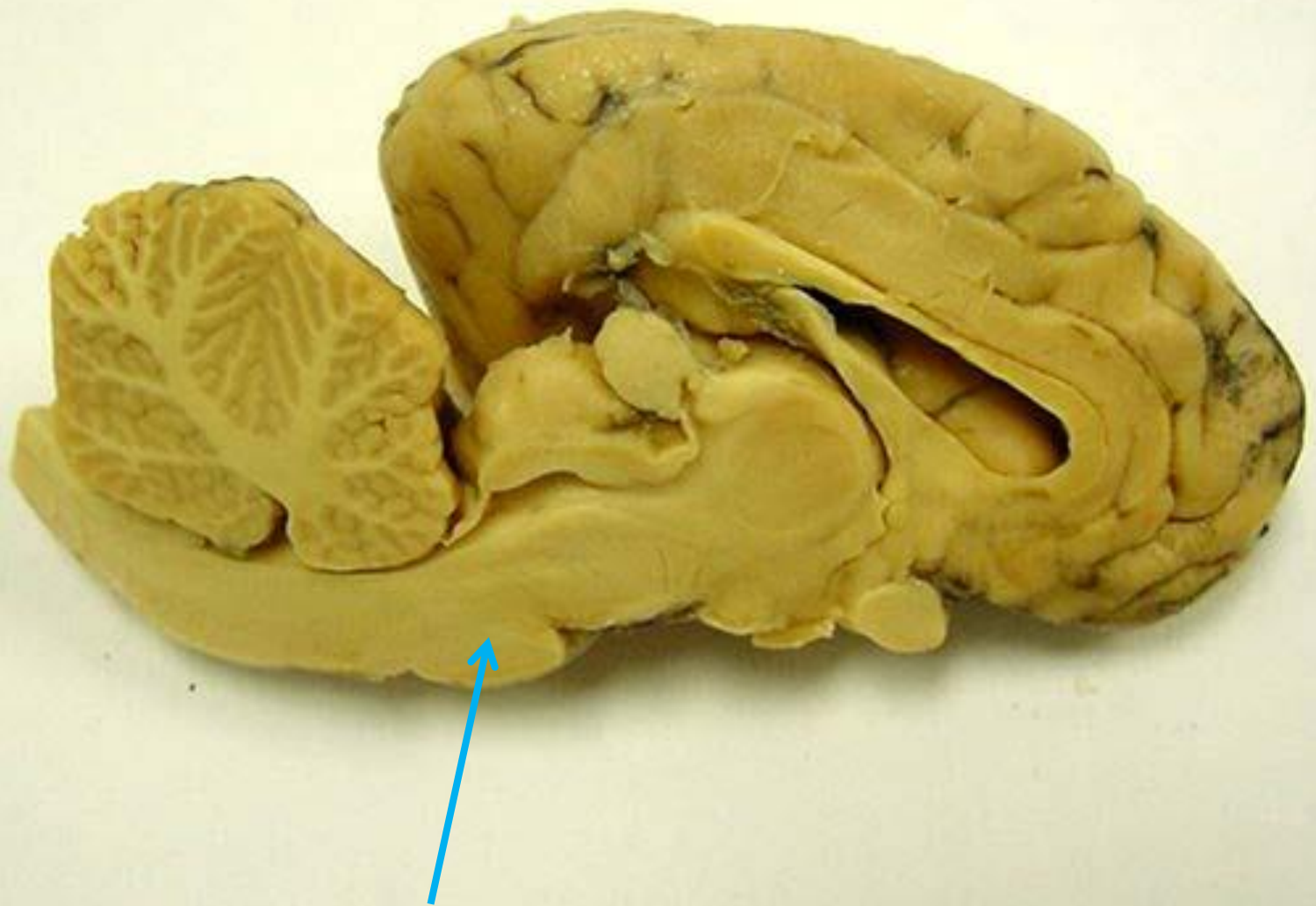




*scroll to the next slide to
check your answer



Septum pellucidum



*scroll to the next slide to
check your answer



Pons