



Pride Center



SAN DIEGO MESA COLLEGE

Lucio Lira, M.S., APCC

(He/They/Él)

Adjunct Pride Center Counselor Coordinator



Why Does Having a Pride Center Matter?



Why the Pride Center Matters?



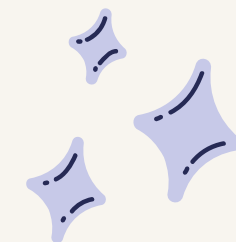
- LGBTQIA+ Students (particularly students of color) strongly consider leaving their institutions due to (Diaz & Gonzalez, 2022):
 - Not feeling welcomed.
 - Hostile Environments - verbal, physical, and sexual harassments (Ivory, 2005).
 - Mental Health - Higher levels of Suicidal Ideation, Depression, and Anxiety.
 - Feeling Lonely
 - Housing and Food insecurity (Beemyn, Curtis, Davis, et al., 2005).
- The Pride Center will serve as a space to welcome students and recognize their identities and intersectionality.
- This will promote a sense of community and a welcoming environment for students to just **be**.



Why the Pride Center Matters?



- The Pride Center can assist student to remain in college and reach their academic goals by receiving affirming services and mentorship from people students feel comfortable with.
- The center can assist students, faculty, staff, and administrators to learn more about how to best support LGBTQIA+ students.
 - Pronouns
 - Hxstorical events about the community
 - How to provide services to students who are Non-Binary
 - Data/Research for services, outreach, retention strategies.
 - Opportunity to learn how to best support current and future students/community members.
- LGBTQIA+ Students, Staff, Faculty, and administration will have a center that can validate their existence, identities, intersectionality.



San Diego Mesa College

LGBTQIA+ Student Enrollment

Spring 2022

*Information provided from the CCC
Apply. Students who **openly disclose**
being part of the LGBTQIA+
Community (March 2022)*

LGBTQIA Identity	Student Numbers
Transgender	80
Bisexual	437
Gay or Lesbian	243
Non-binary	49
Other	99
Total	908

Transgender & Non-Binary Student Enrollment

Summer 2019 - Spring 2022

Transgender

Ethnicity	Student Numbers
African American	7
Asian	44
Latinx/e	74
Multi-ethnicity	34
Native American	3
Pacific Islander	2
Unknown	1
White	112

Non-Binary
Total
3,045

Transgender
Total
277

Total
3,322

Non-Binary

Ethnicity	Student Numbers
African American	139
Asian	161
Filipino	119
Latinx/e	1,092
Multi-ethnicity	339
Native American	12
Pacific Islander	21
Unknown	10
White	1,152

Student Voices - Community Needs

Disability and Neurodivergent Inclusion

“Oh, I want a safe place to read and study about queer stuff. But also other stuff. I want it to be accessible for people who have disabilities of different types, because I have blind, queer friends. I have queer friends who use wheelchairs I’m a service dog user who is queer like there's so many people with disabilities, and especially there's a lot of Trans and non-binary people on the autism spectrum make sure it's autism friendly...

If there's a place at the pride center where it can be quiet and not overstimulating that would be awesome.”



Student Voices - Community Needs

Counseling and Other Resources

"...I think it would be really great if we could have, like, maybe like one or two mental health counselors because I know that that's a huge thing that us in the community that we face a lot of problems with that. So maybe just have like one or two or you know however many y'all can employ. I don't know but and then also with that some substance abuse counselors, because that's a huge issue in our community especially, and I think it's just awesome that we're having a sober space to get together, you know, as LGBTQ+ folks because normally it's centered around, you know, drinking and drugs, clubs and all that, and then they get it."



Student Voices - Community Needs

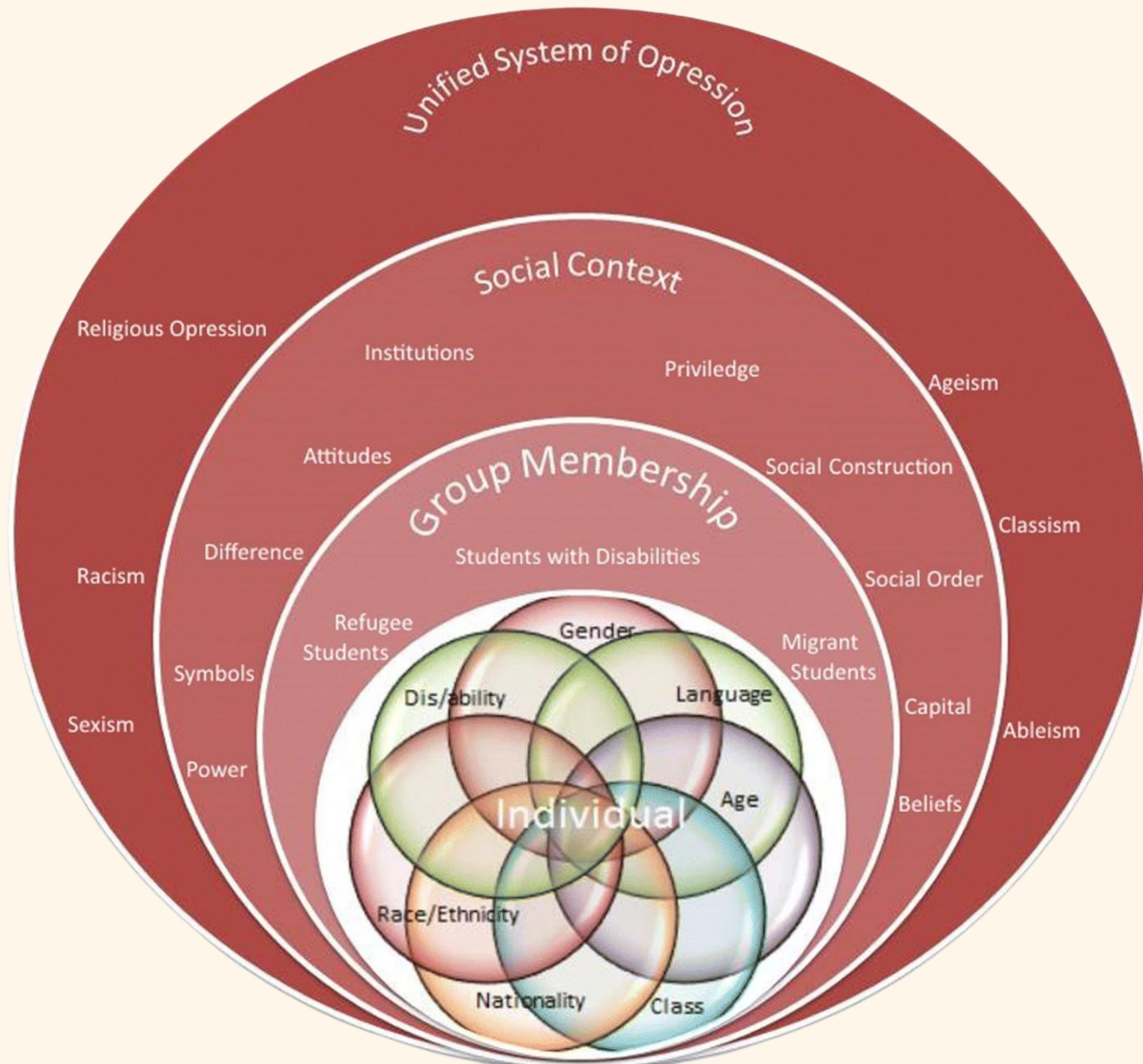
Intersectional Inclusion

"...Make sure there are people of color in [flyers] you mixed race like couples, that kind of stuff, because my husband is black, and we don't ever really get to like experience things that much that have like a black guy and a white guy together on this like ad or poster, or whatever we don't get represented in the media as much as a mixed race gay trans couple, which, by the way, neither one of us is technically Gay, because I'm poly flux and he's pan, so like we, we're never represented in stuff, especially people with like disabilities on top of all that we have so many.



What is Intersectionality?

From: Intersectionality: A pathway towards inclusive education?



LGBTQIA+ Advocacy and Effors

LGBTQIA Task Force and CDAIE

- Kevin Branson
- Mary Gwin
- Michael Harrison
- Bridget Herrin
- Gloria Kim
- Bryan Malinis
- Jorge Villalobos
- Judy Sundayo

Newest Member

- Lucio Lira

*Scan to go to our Mesa
College LGBTQIA+
OUT/Ally List*





**What has the Pride Center
done?**

Active on Social Media!

WELCOME TO THE
✦ MESA COLLEGE PRIDE CENTER ✦
INSTAGRAM!



Pride Center Library





Welcome Back To:
The LGBTea



Hey Mesa Olympians! Welcome back to your Pride Center Newsletter, **The LGBTea** – bringing you all things here and queer. In this August edition, you'll find we have an exciting month ahead for students and faculty alike. Let's get into it!

If you want to be included in our mailing list and future LGBTea newsletter editions, hit the button and complete our form below!

Subscribe

Without further ado, Let's Get to the Tea!

Pride in Action: Our August Events

LGBTea Newsletter

*Opportunity to share on and off
campus resources, events,
activities, other opportunities,
and more!*



Join our "LGBTea" Newsletter!

Mesa College Pride Center Website!



Events and Activities!



The Pride Center is open to collaborations with other departments! :D

 **Pride Center**
SAN DIEGO MESA COLLEGE

With  **THE Stand**
SAN DIEGO MESA COLLEGE

FREE LUNCH

VEGAN OPTIONS AVAILABLE!



RAINBOW Eat-n-Greet
WEDNESDAY 09/21 @12PM-2PM



RSVP HERE!

EVENT LOCATION:
STUDENT SERVICES, 14-202

*Join & Connect with your
LGBTQIA+ community.*

Pride Center Location: 14-401, Student Services

 SDMesaPrideCenter@sdccd.edu  [@SDMesaPride](https://www.instagram.com/SDMesaPride)

 (619) 892-8312  [@SDMesaPride](https://www.tiktok.com/@SDMesaPride)

Counseling Services



Counseling Appointments Now Available!

Need assistance about how to reach your goals at Mesa College?
We practice cultural humility and focus on engaging from an anti-oppressive positionality to create safer spaces for our LGBTQIA+ students.

Our counseling services can assist with:

- Create and edit your Educational Plan
- Explore Careers & Degree Success
- Supportive Counseling
- Transfer Opportunities
- and much more!

**Scan QR Code to
request a counseling
appointment!**



Connect with us!



@SDMesaPride



(619) 892-8312



@SDMesaPride



SDMesaPrideCenter@sdccd.edu

Safe Zone Trainings

Introducing our new updated Mesa College
Safe Zone Training Logo

*Opportunity to immerse in a learning and brave
environment to best support the LGBTQIA+
community at Mesa College.*



SAN DIEGO MESA COLLEGE

Collaboration with other Community Colleges!

San Diego Imperial Queer Alliance (SDIQuA)

- *Region 10 organization to assist the support of LGBTQIA+ Students.*

SDCC District Queer Alliance

- *Collaboration between Mesa, City, Miramar, and CE.*

A promotional poster for SDIQuA Pride Potluck! The top features a rainbow wavy line and a string of colorful triangular bunting flags. The text 'SDIQuA' is in large, multi-colored letters, followed by 'Pride Potluck!' in large orange letters. Below this, the date 'July 23rd, 2022' and 'Location and Time TBD' are listed. A tagline 'Share delicious food and amazing company!' is followed by an illustration of a picnic basket and a QR code. The bottom section contains contact information for Lucio Lira and Richard Weinroth.

SDIQuA
Pride Potluck!
July 23rd, 2022
Location and Time TBD

Share delicious food and amazing company!

RSVP by scanning QR code or go to bit.ly/SDIQuAPotluck

For more information contact Lucio Lira (llira@sdccd.edu) or Richard Weinroth (rweinroth@sdccd.edu)

The Pride Center will serve as the College's centralized resource center and offer the following services:

Academic Support

- Academic, career, and personal counseling

Events

- Academic, career, and personal counseling

Leadership Opportunities

- Community Engagement
- Rewards as Certificates/Diplomas

Mental Health Services

- Individual and Group Session
 - Come As You Are - Facilitated by Student Health Services

Food and Housing Support

- Mini "The Stand" at the center.

Expressive and Affirming Workshops

Referrals to Safe and Affirming Community Services

Outreach Services for Incoming Students

Safe Zone Trainings

LGBTQIA+ Library

Scholarships

Student Groups



Pride Center Goals

The goal of our Pride Center is to provide a safe campus space for anyone regardless of their sexual orientation, gender identity, ethnic heritage, and/or cultural background.



**Safe and
Supportive**



**Diversity and
Inclusion**

Pride Center Layout Design - D102



Future Plans for our LGBTQIA+ Community at Mesa College



***Learning
Community***



***Lavender
Graduations***



***Safe Zone
Trainings***



***Gender and
Sexuality
Alliance
(GSA) Club***



***Gender
Affirming
Support
Services***

& much more!



Pride Center

SAN DIEGO MESA COLLEGE

Thank you!

Contact us!

SDMesaPrideCenter@sdccd.edu



Follow us on Instagram!

@SDMesaPride



Follow us on TikTok!

@SDMesaPride



***Scan QR Code to receive more
information!***

Join our "LGBTa" Newsletter!

References

Diaz, M., & Gonzalez, S. A. (2022). *Queering Higher Education: The Qtpoc experience*. Cognella Academic Publishing.

Dowding, K. (2008). Perceptions of Leadership. In P. 't Hart & J. Uhr (Eds.), *Public Leadership: Perspectives and practices* (pp. 93–102). ANU Press.
<http://www.jstor.org/stable/j.ctt24h3bh.12>

Ivory, B. T. (2005). LGBT students in community college: Characteristics, challenges, and recommendations. *New Directions for Student Services*, 2005(111), 61–69. <https://doi.org/10.1002/ss.174>