

SAN DIEGO
MESA COLLEGE

STUDENT
EQUITY &
ACHIEVEMENT

SEA PROGRAM

Presentation to President's Cabinet
03-17-2020



PRESENTATION OVERVIEW

SEA Annual Report
Disproportionately Impacted (DI) Student Groups
Activities
Success Story
Challenges
SET Committee Activity Highlight: Equity Crosswalk

SAN DIEGO
MESA COLLEGE



INGRID JAYNE
BSI Coordinator



ANDY MACNEILL
Dean of Learning
Resources &
Academic Support



LARRY MAXEY
Dean of Student
Success & Equity



AILENE CRAKES
Dean of Student
Development

The background of the slide is a photograph of a modern, multi-story building with large glass windows and light-colored panels. In the foreground, there are several trees with bare branches and some greenery. A yellow rectangular box is overlaid on the center of the image, containing the title text in a dark blue, textured font.

SEA ANNUAL REPORT FOR SAN DIEGO MESA COLLEGE

DUE ON 01-01-2020

DI STUDENT GROUPS



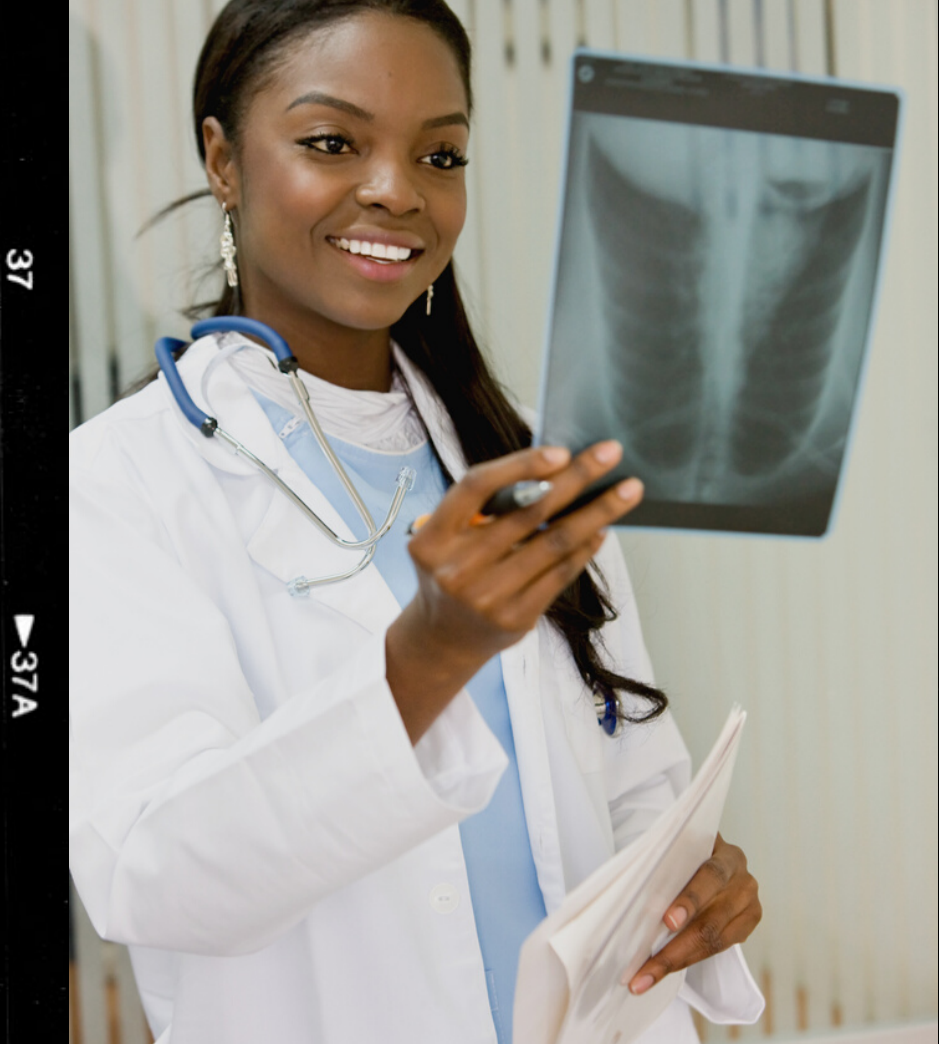
- Black or African American Male
- Black or African American Female
- Native Hawaiian or other Pacific Islander Female
- Native Hawaiian or other Pacific Islander Male
- Hispanic or Latino Male

**BLACK OR AFRICAN
AMERICAN FEMALE**

Completed Both Transfer-Level Math and English within the District in the First Year
Related Activity: Equity Crosswalk

**BLACK OR AFRICAN
AMERICAN MALE**

Completed Both Transfer-Level Math and English within the District in the First Year
Related Activity: Equity Crosswalk



**BLACK OR AFRICAN
AMERICAN MALE**

Transferred to a Four-Year Institution
Related Activity: Equity Crosswalk



HISPANIC OR LATINO MALE

Completed Both Transfer-Level Math and English within the District in the First Year
Related Activity: Equity Crosswalk

37

►37A



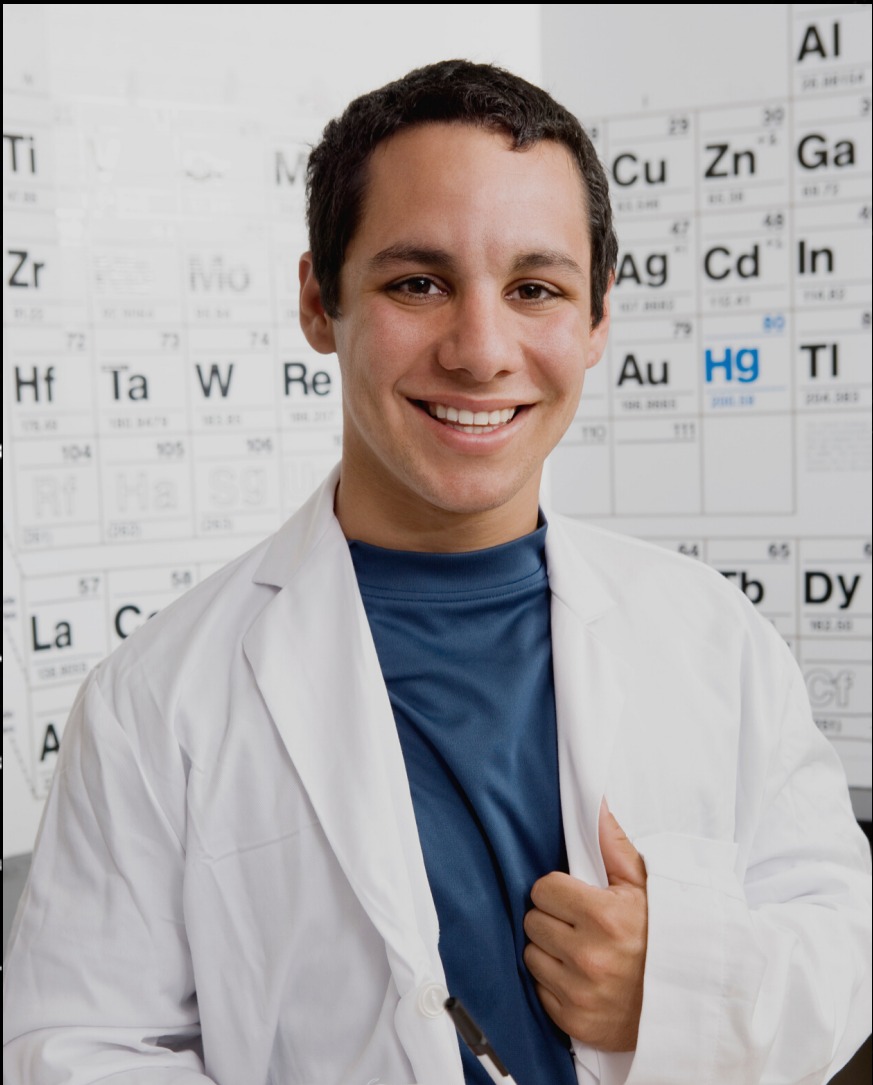
33

►33A



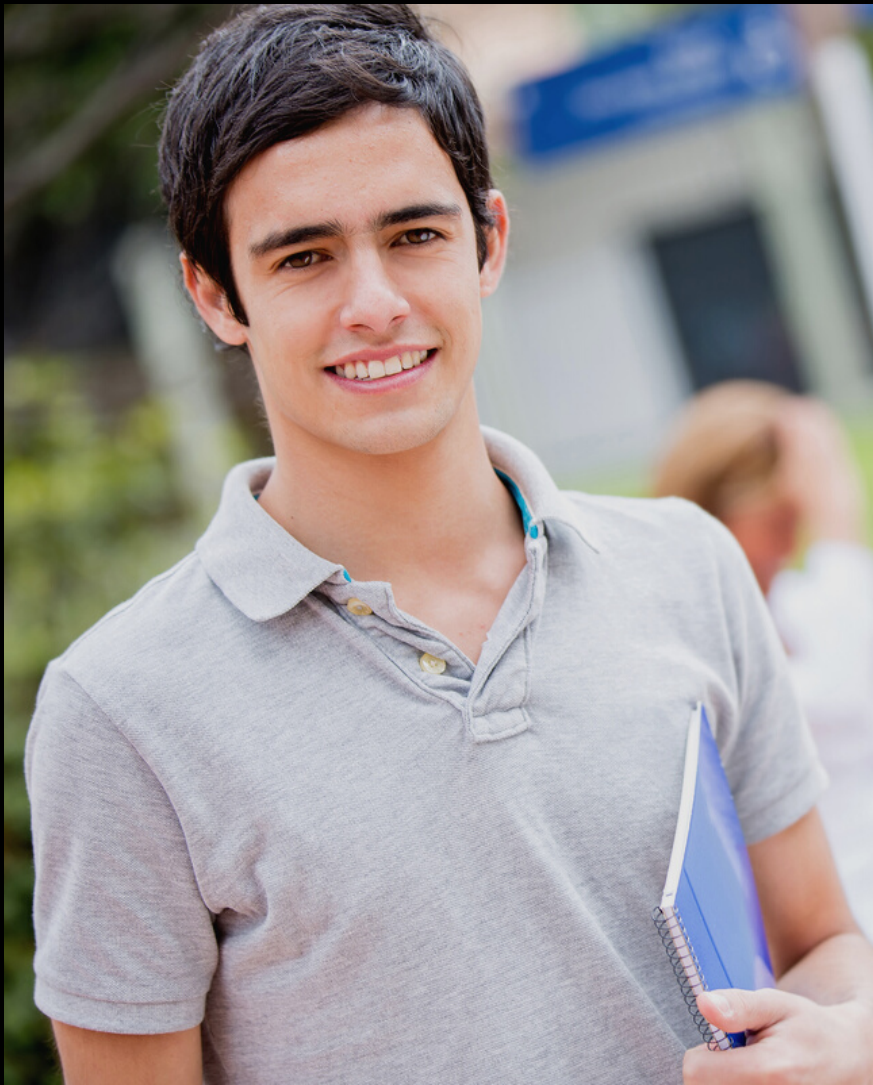
38

►38A



34

►34A



39

35

**NATIVE HAWAIIAN OR
OTHER PACIFIC ISLANDER
MALE**

Completed Both Transfer-Level Math and English within the District in the First Year
Related Activity: Equity Crosswalk

**NATIVE HAWAIIAN OR
OTHER PACIFIC ISLANDER
MALE**

Transferred to a Four-Year Institution
Related Activity: Equity Crosswalk



28A

29

29A

30

TX 5063

TX 5063



Success Story

Basic Needs

San Diego Mesa College is committed to supporting the basic needs of our students in order to support retention and equity-focused student engagement.

San Diego Mesa College has been working diligently to address the most basic needs of students. From opening up The Stand (the food and clothing pantry) in early 2017, to debuting the monthly free Farmers Market in 2018, the weekly Pop-Up Markets in 2019, to providing emergency funds for car repairs and hotel vouchers, Mesa has assisted thousands of students with obtaining access to essentials such as food, clothing, transportation and housing. Through this work, the college identified a need to do more.



Success Story

Basic Needs (cont'd.)

Working collaboratively with community partners:

- **San Diego Food Bank, County of San Diego**
- **Ronald McDonald House**
- **San Diego Mesa College Foundation**

To develop programs and interventions that support the basic needs of our students.

Success Story



FARMERS MARKET

In 2018 – 2019, the market distributed more than 150,000 pounds of food to nearly 9,000 households.



THE STAND

In 2018 – 2019, The Stand distributed nearly 45,000 food items, 1,600 clothing items and served nearly 1,800 unique students.



POP-UP MARKET

A weekly means for students to gain access to free and fresh food and serves an average of 1,000 pounds of food per week.

SUCCESS STORY



An average of 1000 pounds of food was distributed weekly to an average of 75 households.

Direct Support services are available to students in the form of educational resources, food cards, transportation support, textbook resources, and other practical supports.

One-time emergency relief funds available to Mesa's most vulnerable populations.

Financial well-being workshops are also available to help students gain financial stability through financial education programs.

Challenges



FUNDING

Uncertainty of the funding



BASIC SKILLS

Absence of a sequencing of classes does not mean that we no longer have basic skills needs as an institution



SUPPORT COREQUISITES

Students are struggling in the support corequisite courses and many are dropping.

TX 5063

TX 5063



▶ 32A

33

▶ 33A

34

There is a need to firmly develop processes in ways to engage students in the corequisite support courses as well as other courses across the curriculum that show high D, F, W grades to support basic skills needed to pass these courses..

TX 5063

TX 5063



▶ 32A

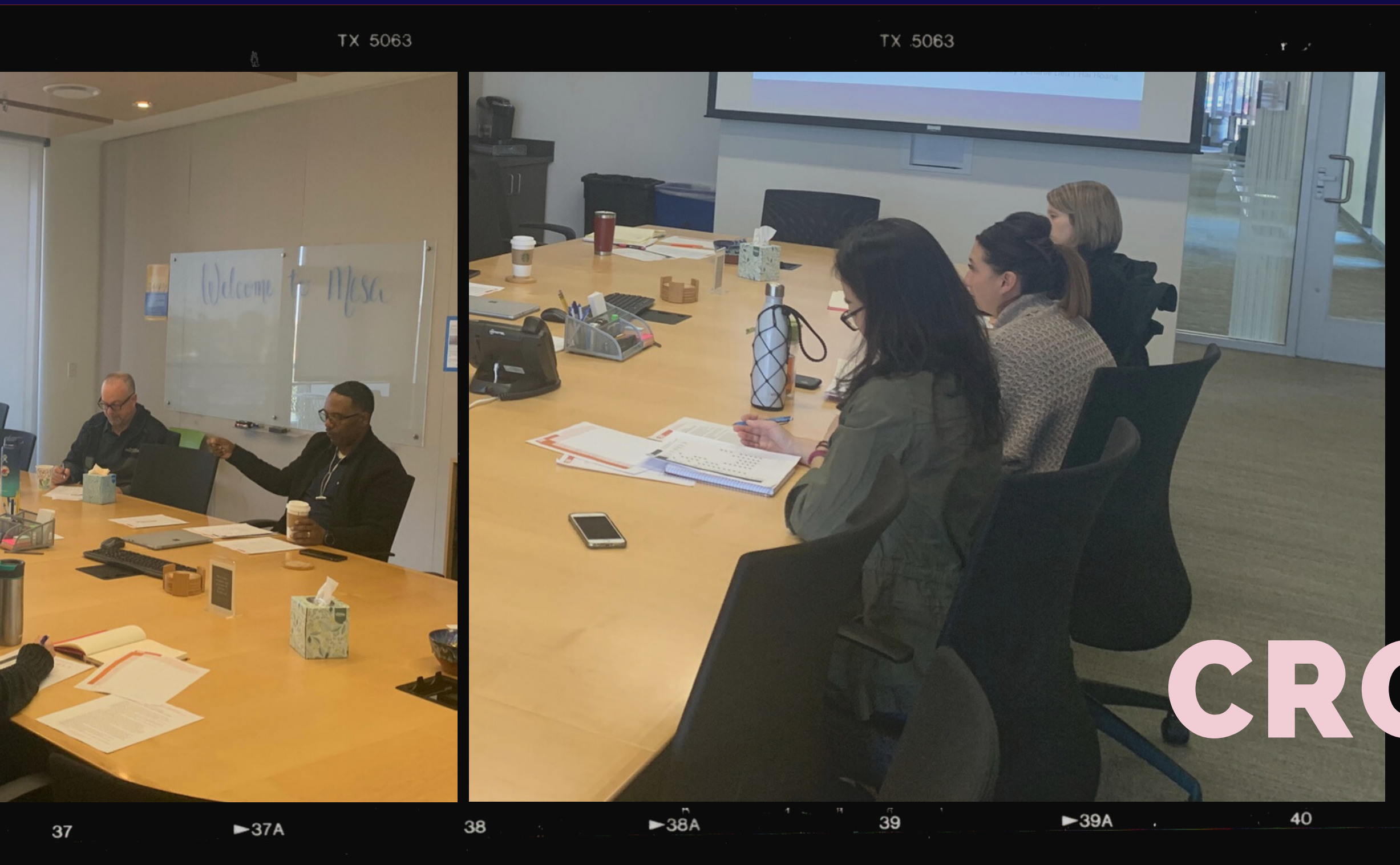
33

▶ 33A

34

CHALLENGES

SET COMMITTEE ACTIVITY HIGHLIGHT



EQUITY CROSSWALK

SPRING 2020



HANNAH PADILLA
BARAJAS
Languages



KYUNG AE JUN
Institutional Research



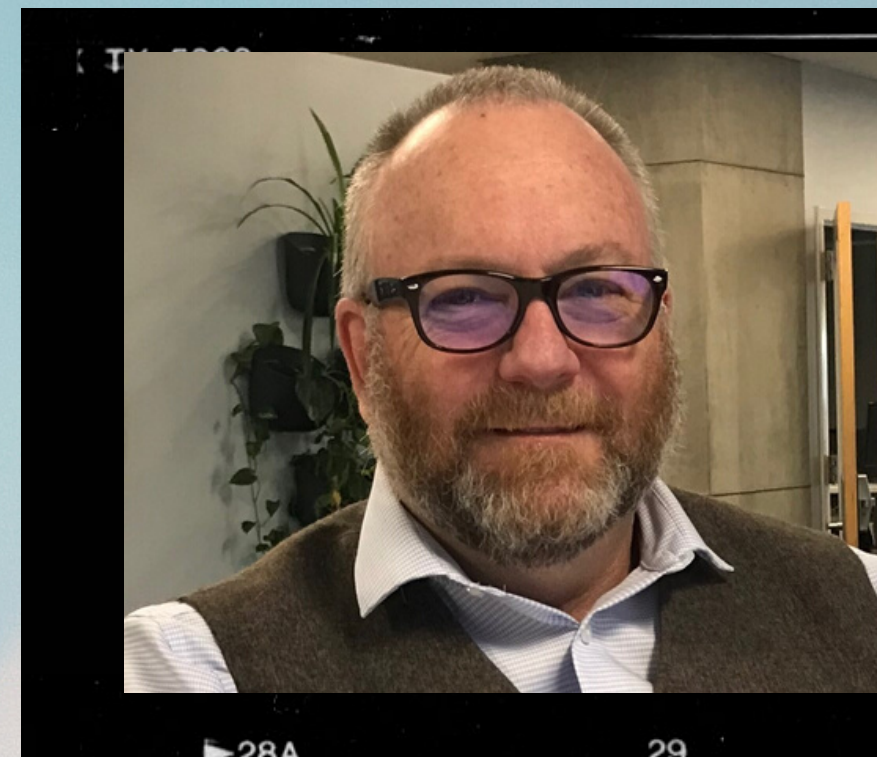
MELISSA WILLIAMS
DSPS



EDEAMA ONWUCHEKWA
Equity Librarian

EQUITY CROSSWALK TEAM

SAN DIEGO
MESA COLLEGE



ANDY MACNEILL
Learning Resources &
Academic Support



LARRY MAXEY
Student Success &
Equity



AILENE CRAKES
Student Development



HANNAH PADILLA
BARAJAS
Languages

- Mathletics
- STAR/TRIO



KYUNG AE JUN
Institutional Research

- Office of Institutional Effectiveness
- Peer Navigators



MELISSA WILLIAMS
DSPS

- DSPS – Disability Support Programs and Services
- EOPS – Extended Opportunities Programs and Services



EDEAMA ONWUCHEKWA
Equity Librarian

- Equity Librarian
- Honors Program



ANDY MACNEILL
Learning Resources &
Academic Support

- Classroom Tutoring
- LOFT- Learning Opportunities for Transformation
- MT2C – Mesa Tutoring and
- Computing Centers



LARRY MAXEY
Student Success &
Equity

- AVANZA
- Basic Needs
- CalWORKS
- CARE
- CRUISE – Creating Rich Unique Intellectual Student Experiences



AILENE CRAKES
Student Development

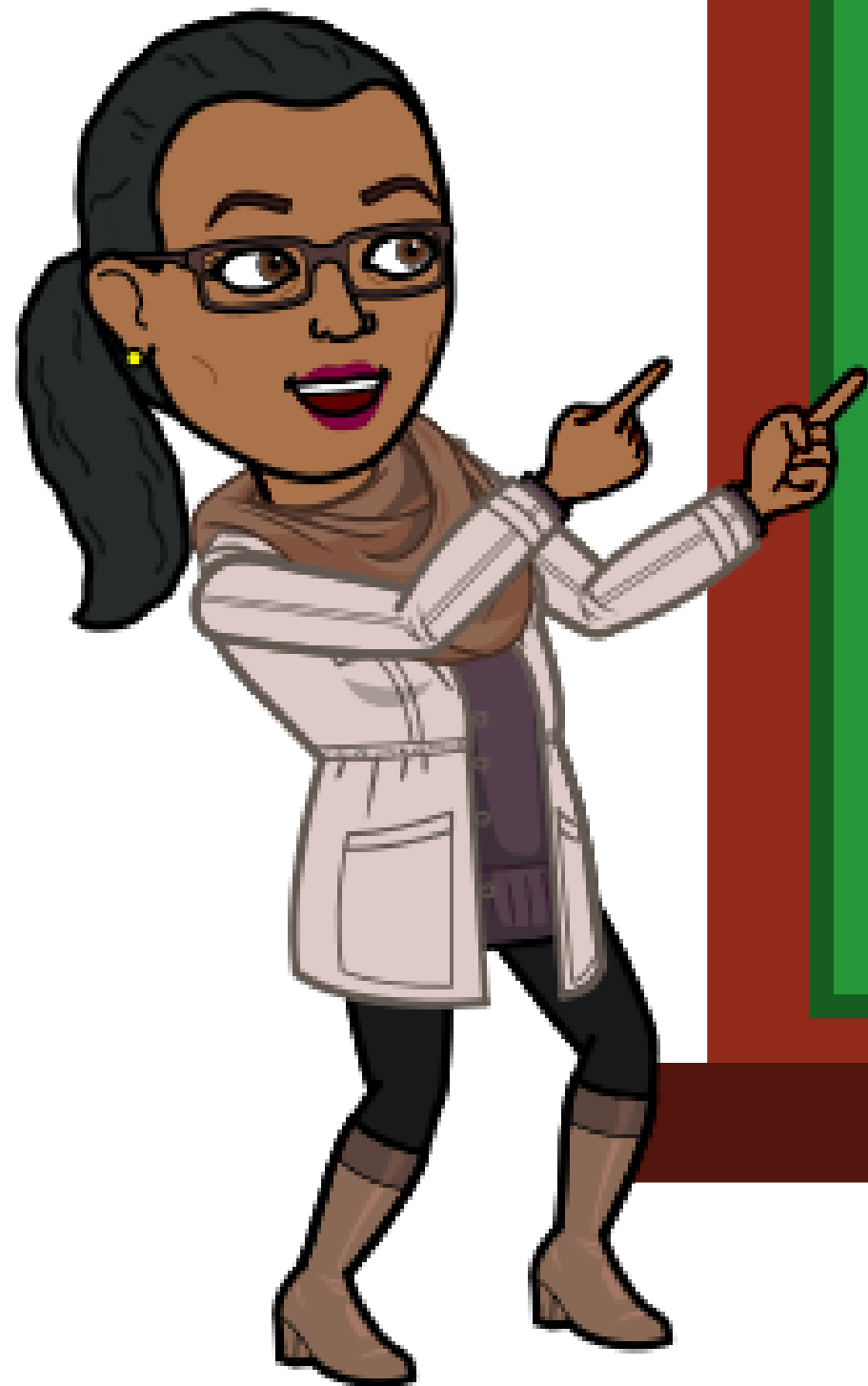
- Career
- Online Counseling
- Veterans Success Center

SAN DIEGO
MESA COLLEGE

**SPRING 2020
EQUITY CROSSWALK
TASK FORCE ASSIGNMENTS**

COMPLETED EQUITY CROSSWALK

1. Basic Skills Initiative
2. Educational Planning Services
Abbreviated & Comprehensive
3. General Counseling
4. Follow-up/Intervention
5. MAAP – Mesa Academics &
Athletics Program
6. New Student Orientation
7. UMOJA/Mesa Academy
8. Outreach/Community Relations
9. Puente Project
10. Borderless Scholars
11. FAST
12. Foster Youth
13. NextUP
14. Placement Assistant
15. Raza Grad
16. Rites of Passage
17. Safe Zones, LGBTQIA
18. SYE/ADVOC8



many
thanks